

City of Ann Arbor
**NATURAL AREA
PRESERVATION**



Natural Area Preservation (NAP) works to protect and restore Ann Arbor's natural areas and to foster an environmental ethic within the community.

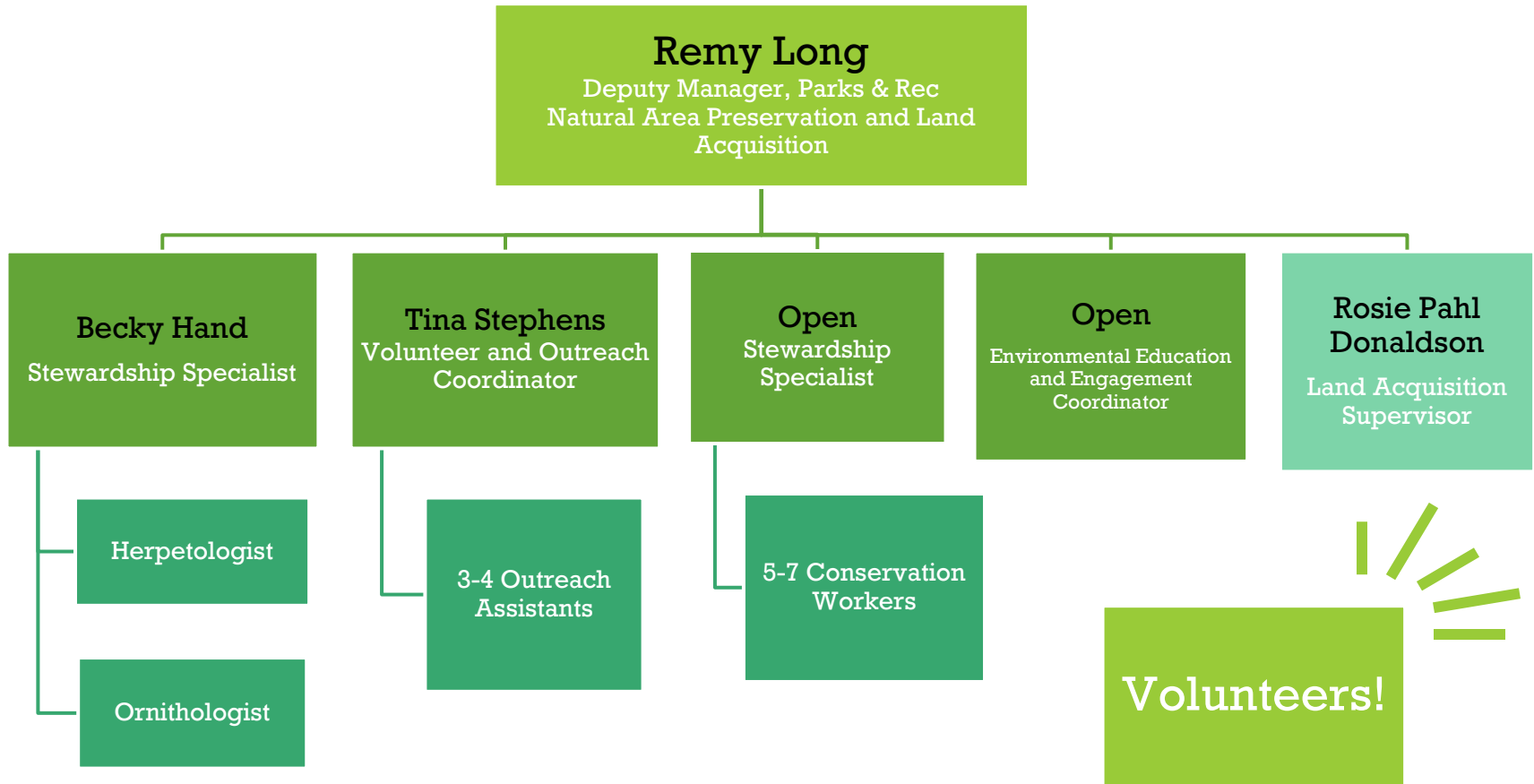
NAP: Background

- Created in 1993
- Funded by the voter-approved Parks Maintenance and Capital Improvements Millage
- 163 parks
 - 82 have “natural” portions
- 2,188 acres
 - 1,300 “natural”



CITY OF ANN ARBOR
**Natural Area
Preservation**

NAP: Organizational Chart



NAP: Staff and Volunteers

- Ecological Assessments
- Ecological Restoration
- Education and Outreach
- Land Acquisition



Butterfly Weed (*Asclepias tuberosa*)

NAP: Staff and Volunteers

- Ecological Assessments
 - Animal inventories
 - Plant Inventories
- Ecological Restoration
- Education and Outreach
- Land Acquisition



Eastern American Toad (*Bufo americanus*)

NAP: Animal Inventories

- Frog and toad surveys
- Salamander survey
- Turtle stewards
- Breeding bird survey
- Butterfly survey



Spotted Salamander
(*Ambystoma maculatum*)



Harvester butterfly
(*Feniseca tarquinius*)



Black-crowned Night-Heron
(*Nycticorax nycticorax*)

NAP: Plant Inventories

- Photo Monitoring
 - Record and track the progress of our restoration efforts



**Bird Hills
Cascade Glen**



NAP: Plant Inventories

□ Floristic Quality Assessment

- A method of assessing how “natural” (at least in terms of plant communities) a site is based on the “conservatism” of the plants that are present.



Purple milkweed
(*Asclepias purpurascens*)



Bee balm
(*Monarda fistulosa*)



Cone flower
(*Ratibida pinnata*)

NAP: Plant Inventory Stats

- 1208 species of plants – 22 state-listed as Endangered, Threatened, or Special Concern



NAP: Staff and Volunteers

- Ecological Assessments
- **Ecological Restoration**
- Education and Outreach
- Land Acquisition



NAP: Ecological Restoration

- Invasive plant and shrub removal
- Controlled burns
- Seed dispersal
- Trail work



NAP: Controlled Burn Volunteer Crew

- Training in February
- No experience necessary
- Burns take place Monday-Friday in the *afternoon*



NAP: Stewardship Workdays

- **Types of Activities**
 - Invasive plant removal (pull or cut)
 - Native plant fostering and planting
 - Trail improvements
 - Native seeds collection and dispersal
- **When?**
 - March through December
 - Weekend mornings & afternoons
 - www.a2gov.org/NAPEvents
 - www.vhub.at/NAP
- *No experience necessary!*



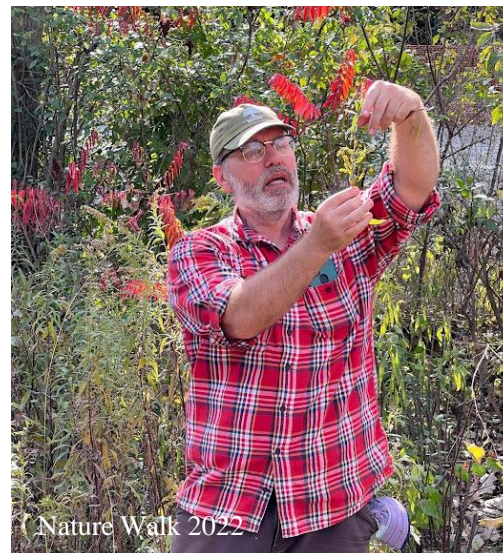
NAP: Staff and Volunteers

- Ecological Assessments
- Ecological Restoration
- **Education and Outreach**
- Land Acquisition



NAP: Community Events

- ❑ Nature walks with Ann Arbor District Library
- ❑ Ann Arbor Earth Day Festival
- ❑ Mayor's Green Fair
- ❑ BioBlitzes
- ❑ Huron River Day



NAP: Volunteer Programs

- Office Volunteers
- Interns
- Research Projects
- Community Service
- Eagle Scouts
- Citizen Pruners



NAP: Staff and Volunteers

- Ecological Assessments
- Ecological Restoration
- Education and Outreach
- **Land Acquisition**



Land Acquisition

Open Space and Parkland Preservation Millage

2003-2033

0.5 mill/30-year levy

Revenue: Approx. \$1.8M/year

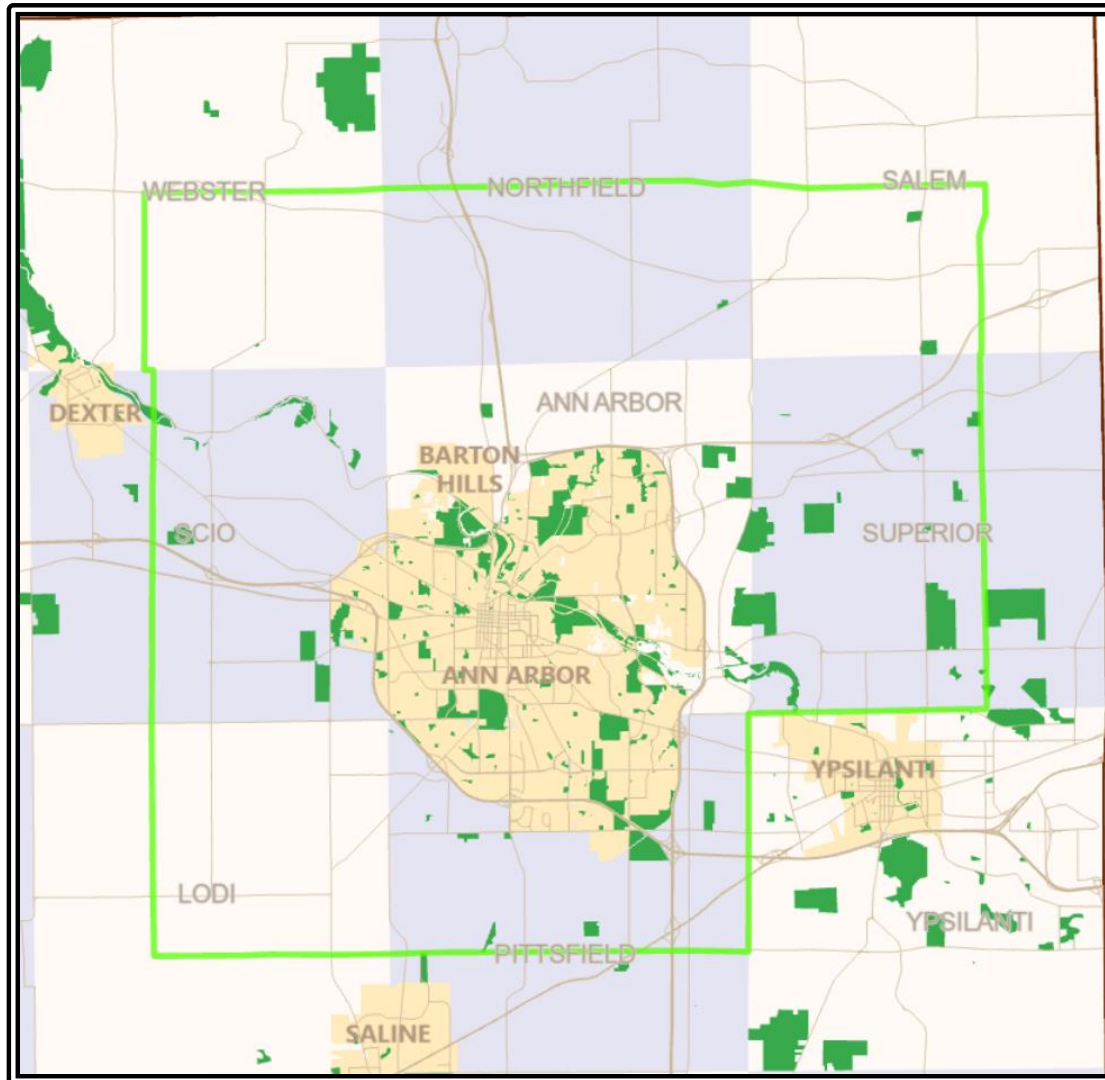
1/3 **Parkland**
Acquisition

Approx. \$600K/year

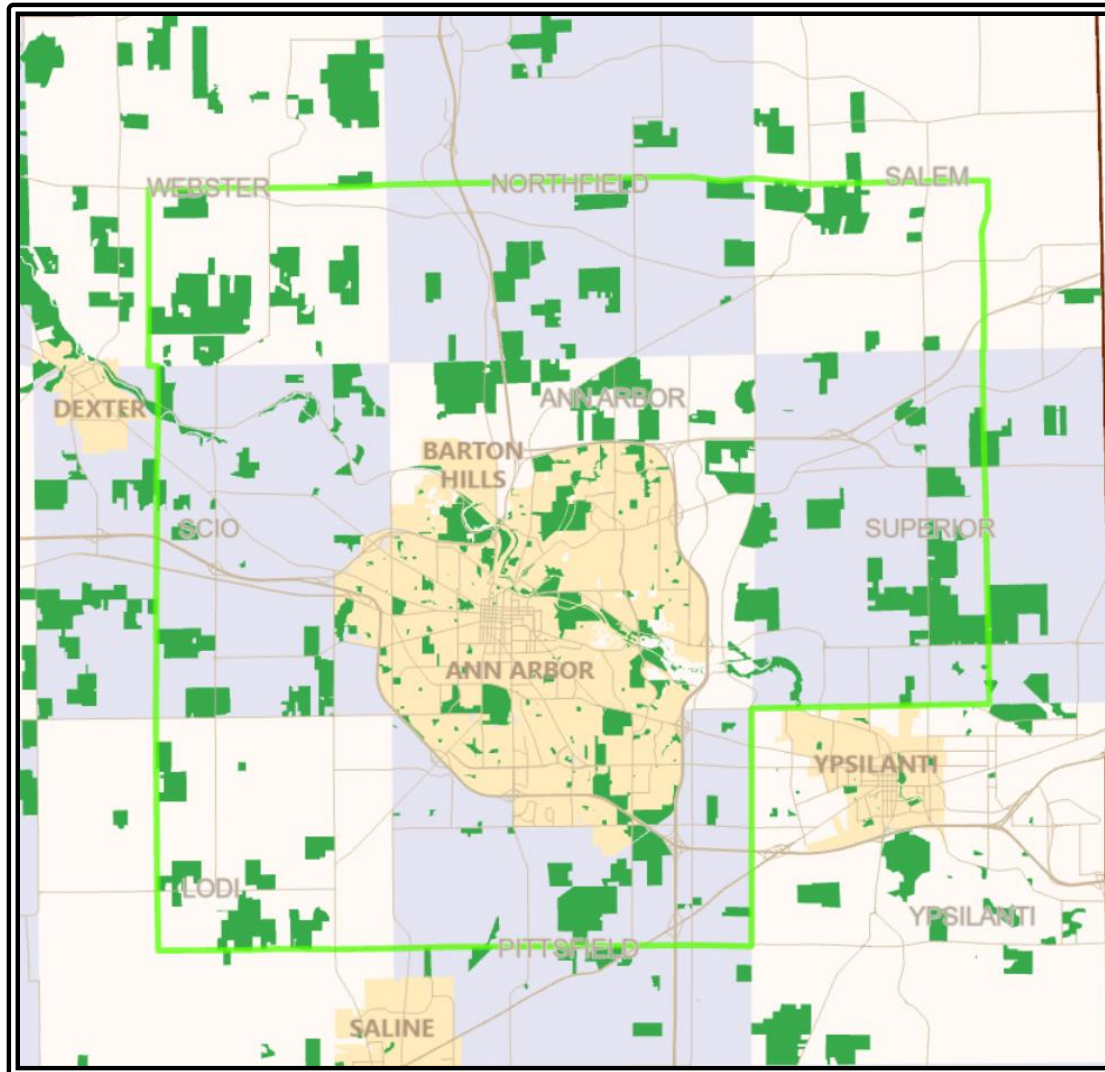
2/3 **Greenbelt**
Acquisition

Approx. \$1.2M/year

Greenbelt



Greenbelt



Connect

- **Call us!**
 - 734.794.6627
- **Newsletters**
 - Email NAP@a2gov.org to subscribe
- **Website**
 - www.a2gov.org/NAP
 - Calendar of Events
 - www.a2gov.org/NAPevents
 - www.vhub.at/NAP
- **Facebook**
 - www.facebook.com/ann.arbor.nap

Thank you

- Remy Long, Deputy Manager
– Parks & Recreation Services
- RLong@a2gov.org
- 734.794.6627

