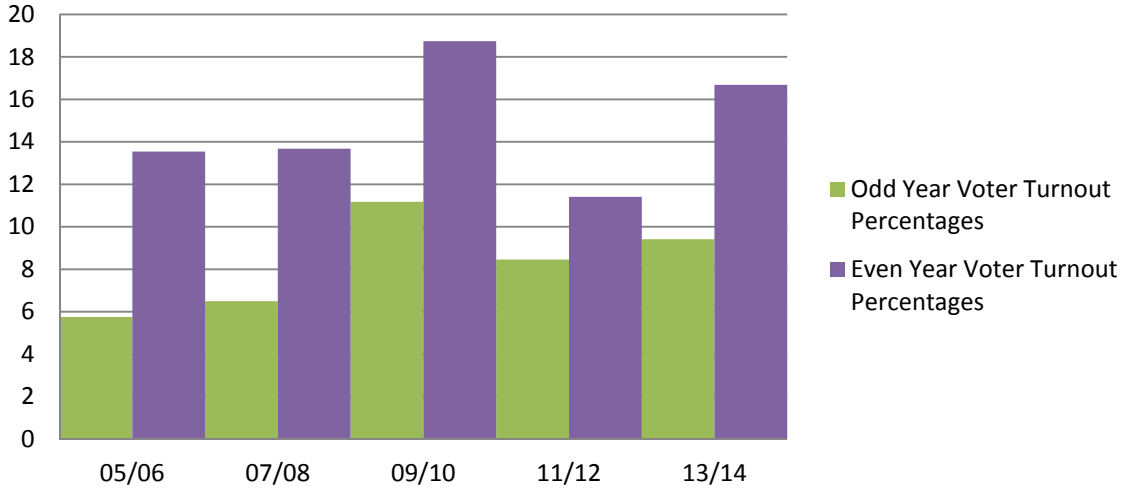
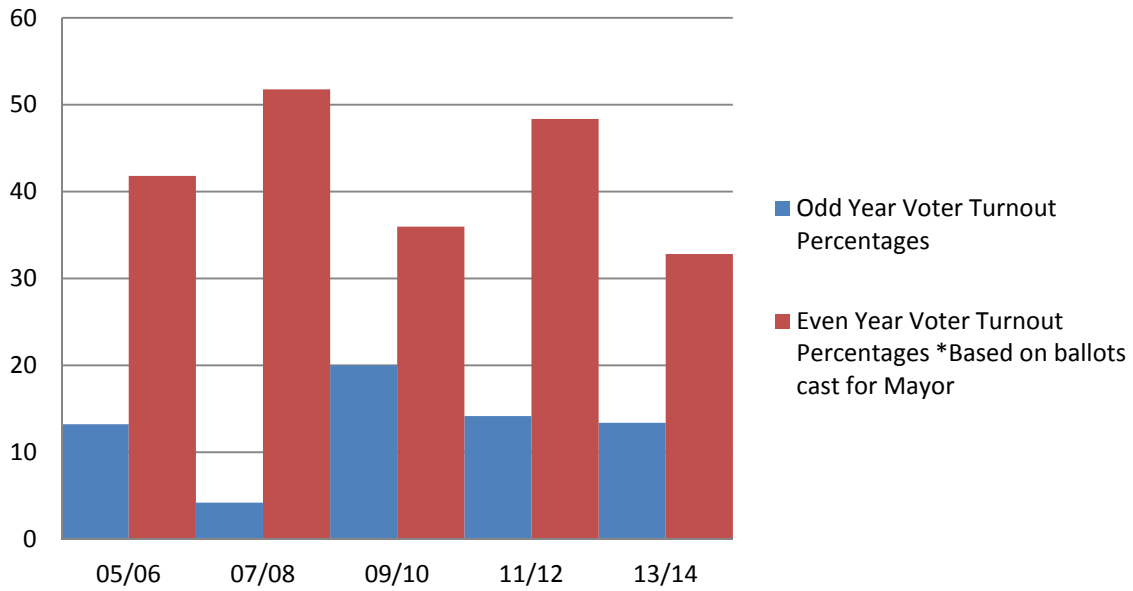


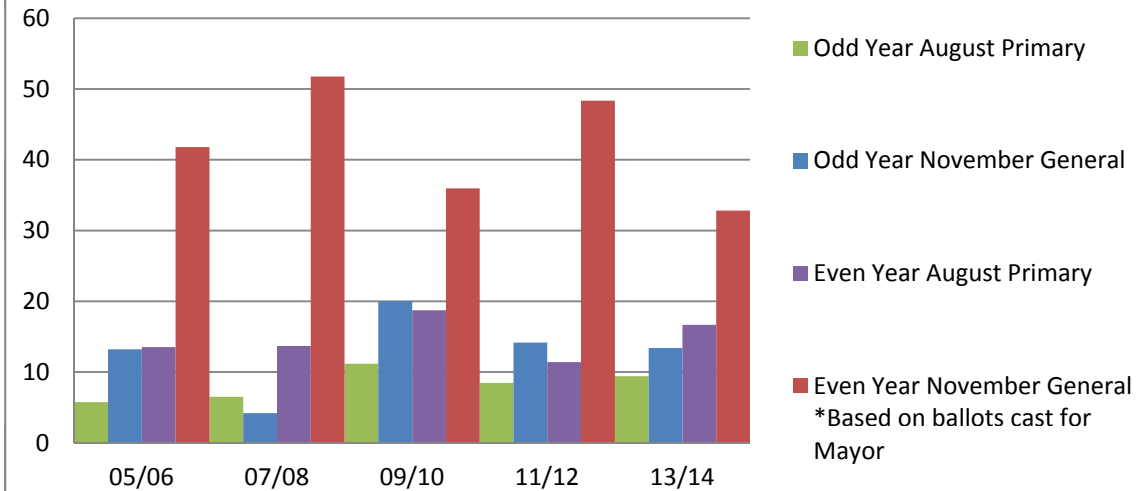
## Ann Arbor City Council August Primary Election Turnout 2005 - 2014



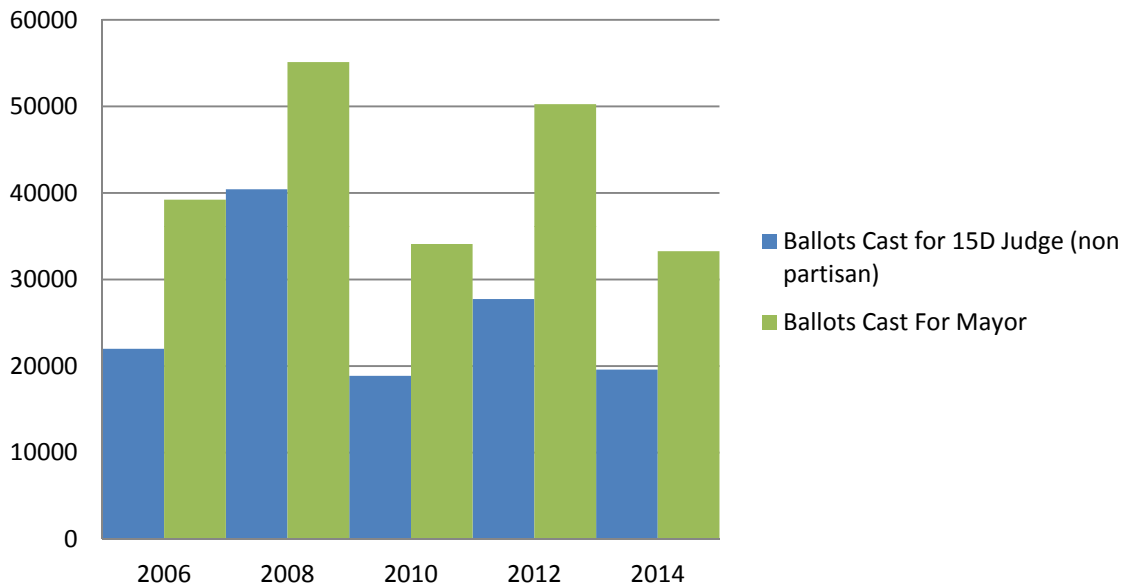
## November General Election Turnout 2005 - 2014



## Ann Arbor City Council Voter Turnout Percentages August and November 2005 - 2014



## Even-year Ballots Cast for Mayor (partisan) and 15 District Judge (non-partisan)



## City of Ann Arbor

### Financial Impact of Odd-Year Elections and Comparison of Voter Turnout

#### Special Election Costs\* (for comparison)

May 2011 WISD	\$51,000
May 2012 AAPS	\$57,500
May 2014 AAATA	\$69,500

\*Billable election costs include election inspectors, temporary staff, permanent staff OT, ballot printing, supplies and advertising.

Use of permanent staff time is not included.

Average Costs of Election Inspectors per Ward (Odd-year primary currently held in each ward only as needed)	\$6,000
--	---------

#### Estimated Financial Savings with Even-only Elections

Elimination of odd-year August Primary	\$45,000	(assuming average of three wards in August. Not all costs (e.g. OT) are directly related to number of wards.)
Elimination of odd-year November General	\$60,000	

Prepared by the Ann Arbor City Clerk's Office

### November General Voter Turnout Odd and Even Years

Year	Wards	Registered Voters	Ballots Cast	Percentage Turnout	Ballots Cast for 15D Judge (Non-partisan)	
Nov-05	ALL	91997	12158	13.22		
Nov-06	Mayor	93822	39218	41.8	22001	
Nov-07	ALL	92724	3899	4.2		
Nov-08	Mayor	106450	55112	51.77	40414	*contested 15D race
Nov-09	ALL	94729	18952	20.01		
Nov-10	Mayor	94815	34099	35.96	18884	
Nov-11	ALL	95626	13553	14.17		
Nov-12	Mayor	103937	50249	48.35	27739	
Nov-13	ALL	99744	13351	13.39		
Nov-14	Mayor	101387	33279	32.82	19589	

\*Even Year Ballots Cast is for office of Mayor, not total voter turnout.

## August Primary Voter Turnout Odd and Even Years

Year	Wards	Registered Voters	Ballots Cast	Percentage Turnout
Aug-05	W2&4	34898	2005	5.75
Aug-05	W2	17028	1251	7.35
Aug-05	W4	17870	754	4.22
Aug-06	Mayor W1,3&5	90612	12269	13.54
Aug-06	W1	17977	1726	9.6
Aug-06	W3	18310	2434	13.29
Aug-06	W5	19226	3844	19.99
Aug-07	W1,3&5	56872	3699	6.5
Aug-07	W1	18725	920	4.9
Aug-07	W3	18664	1095	5.87
Aug-07	W5	19483	1684	8.64
Aug-08	Mayor, W1,2,3&5	93590	12799	13.68
Aug-08	W1	18794	1647	8.7
Aug-08	W2	17698	2651	14.98
Aug-08	W3	18758	2593	13.8
Aug-08	W5	19577	3727	19.04
Aug-09	W3&5	30631	3425	11.18
Aug-09	W3	12093	1415	11.7
Aug-09	W5	18538	2010	10.8
Aug-10	Mayor, W1,4&5	94066	17625	18.74
Aug-10	W1	19793	2482	12.54
Aug-10	W4	18644	3414	18.31
Aug-10	W5	20547	4863	23.67
Aug-11	W2,3&5	46797	3957	8.46
Aug-11	W2	15611	1003	6.42
Aug-11	W3	12223	1188	9.71
Aug-11	W5	18963	1766	9.31
Aug-12	W1,2,4&5	76837	8771	11.41
Aug-12	W1	18252	1511	8.28
Aug-12	W2	17454	2133	12.22
Aug-12	W4	19318	1741	9.01
Aug-12	W5	21813	3386	15.52
Aug-13	W3&4	39414	3709	9.41
Aug-13	W3	19405	1793	9.24
Aug-13	W4	20009	1916	9.58
Aug-14	Mayor, W1,2,3,5	99531	16599	16.68
Aug-14	W1	18830	2260	12
Aug-14	W2	18809	3693	19.63
Aug-14	W3	19300	2967	15.37
Aug-14	W5	22739	4655	20.47