

**John and Mary Bruhns House 436 S. First St. #2**



Above Left to Right:  
436, 430 & 428 S. First St

Left: Mary Albertina  
Neuendorf Bruhns

Right:  
John Henry Bruhns



**John and Mary Bruhns House 436 S. First St. #2**



Bruhns Farm on Van Buren Rd,  
Fowlerville

Above: Bruhns Family on side  
porch of house John, Lucile  
standing , Leora in jeans ,  
Mary sitting

Bruhns: Farmhouse on Van  
Buren Rd. Fowlerville

Mary, Leora and Lucile Bruhns



**John and Mary Bruhns House 436 S. First St. #2**



Left: "Old " Bethlehem School"  
(Old German School)

"In 1873 the German-language school on First St enrolled 121 pupils. German institutions and language survived for generations in Ann Arbor --but were largely swept away during the anti-German hysteria of the First World War."

The Old West Side Story Paper

Left: John Henry Bruhns at 436 S. First St.

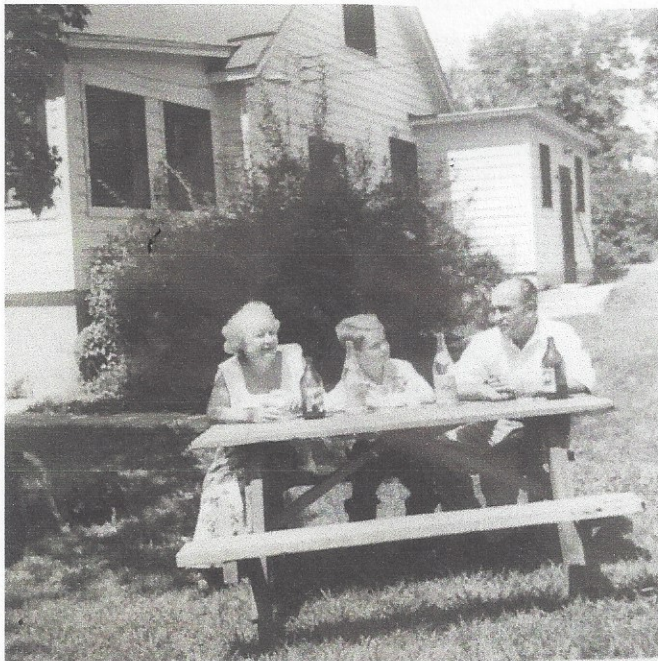


Right: Leora, Bruhns Selleck, Mary John Bruhns and  
Lucile Bruhns Zemke at 436 S. First. St.





**John and Mary Bruhns House 436 S. First St. #2**



Above: John & Mary Bruhns 50th  
Wedding Anniversary 1948  
Standing: Henry Selleck, Leora Bruhns  
Boettcher Selleck, her son Bernard  
Boettcher, Lucile Bruhns Zemke, her  
husband Walter Zemke  
Seated Mary and John Bruhns with  
their grandson W. John Zemke son of  
Lucile and Walter Zemke

Left: Lucile Bruhns Zemke, their son  
W. John Zemke and her husband  
Walter Zemke



**John and Mary Bruhns House 436 S. First St. #2**



Lucile Grace Marie Bruhns Zemke

Left: 436 S. First St

below Stone Star on porch of 436 S. First  
Stonework by Ollie Weinberg





**John and Mary Bruhns House 436 S. First St. #2**



436 S. First St.  
The front door of the house is from the "Old Bethlehem School"

John Bruhns reworked the school's floors and  
woodwork inside the house

Below beams from the school are recycled as  
support beams in the basement

