



2019 Crash Data

Draft Data for the 2019 Annual Crash Report

Presented to: Transportation Commission, 8/21/2019

Presented by: Cynthia Redinger, PE, PTOE

Data Source

- The data used in this report comes from the Michigan Certified Crash Data. This data is available for viewing by the public through the Office of Highway Safety Planning's (OHSP) online data tool: www.michigantrafficcrashfacts.org.
- Data was filtered to remove crashes on the freeway system and animal crashes.

Historical Crash Analyses

- Annual system scans to develop safety grant applications
- Responding to a variety of resident requests
- Developing prioritizations for items such as sidewalk gaps
- Identifying needs as part of project design

A Note on Vision Zero Engineering

Prevent serious injury crashes instead of reacting to events that have already happened.

How?

- Use data to identify trends
- Apply proven design elements
- Address known high crash locations

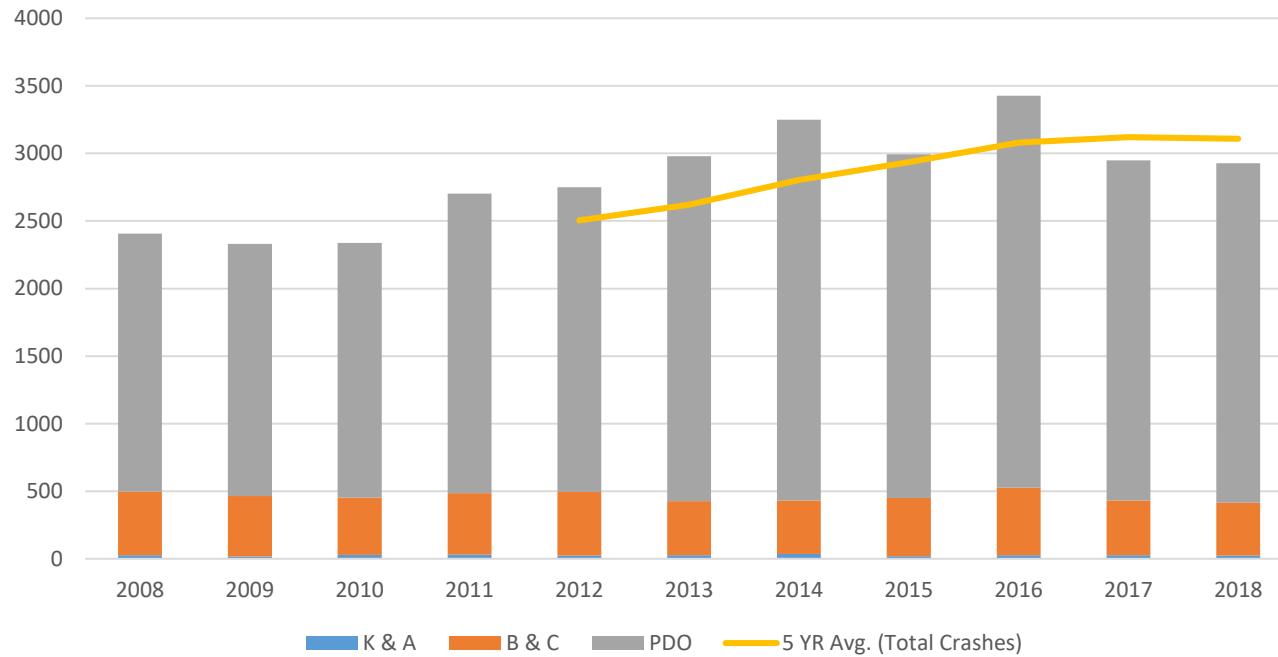
A Note on 5 Year Averages

- Why 5 years?
 - Five year analyses is a standard industry practice. A five year time period allows for trend analysis without bias towards conditions that no longer apply.
- Why focus on a rolling average for trends?
 - From [FHWA](#):
“A rolling average is commonly used to smooth out short-term fluctuations in the data and highlight longer-term trends.”

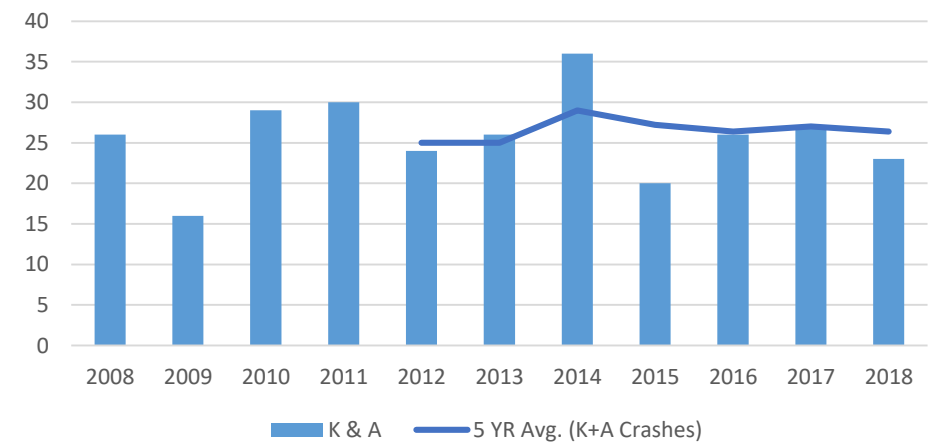
Overall & Severe Injury Crash Trends:

All Crashes

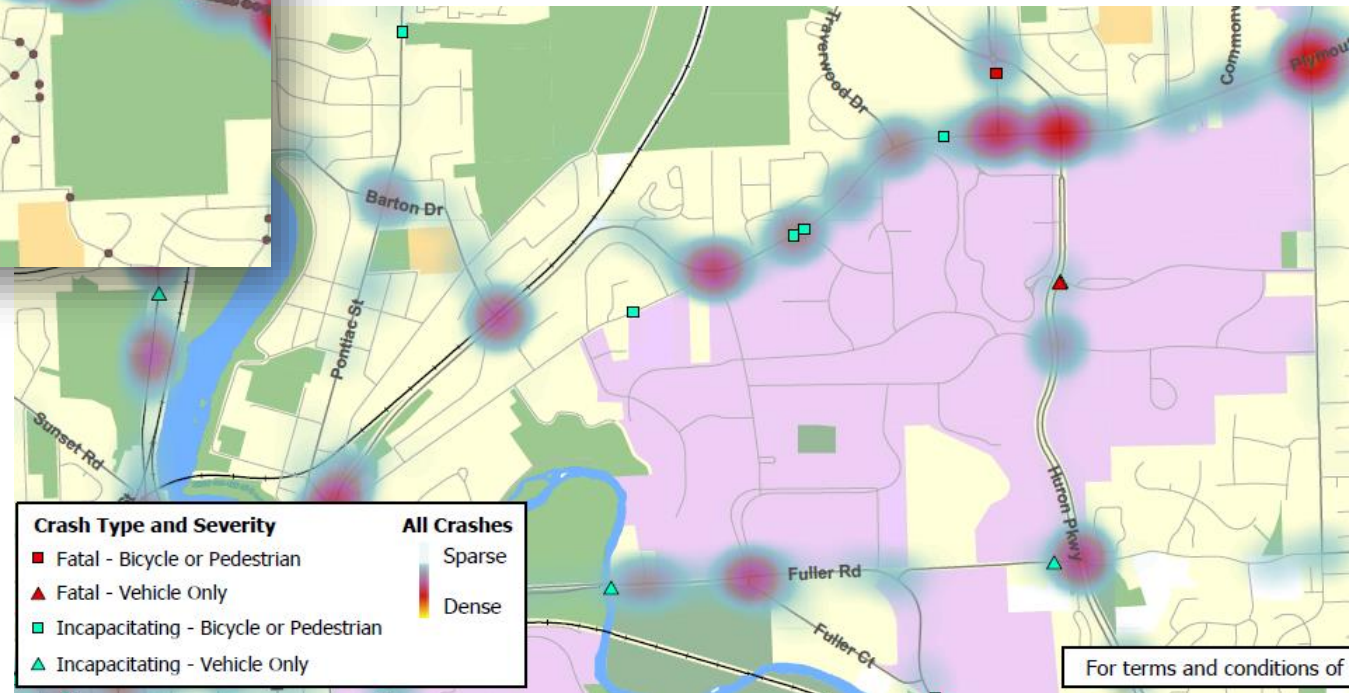
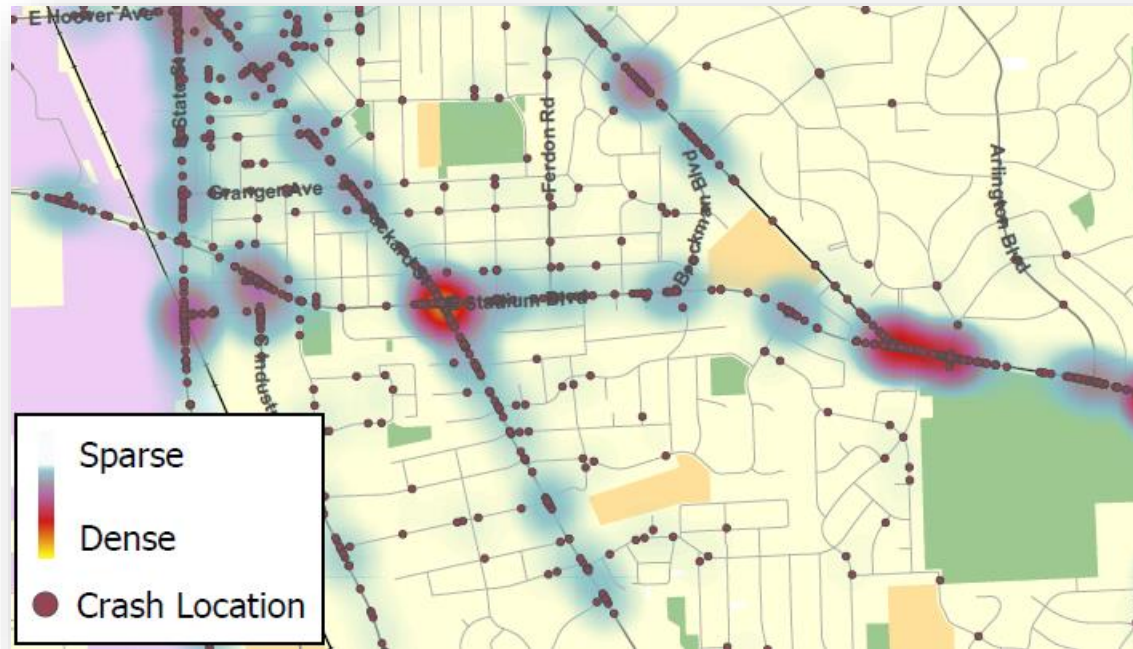
Annual Crashes by Severity Group



Annual K+A Crashes

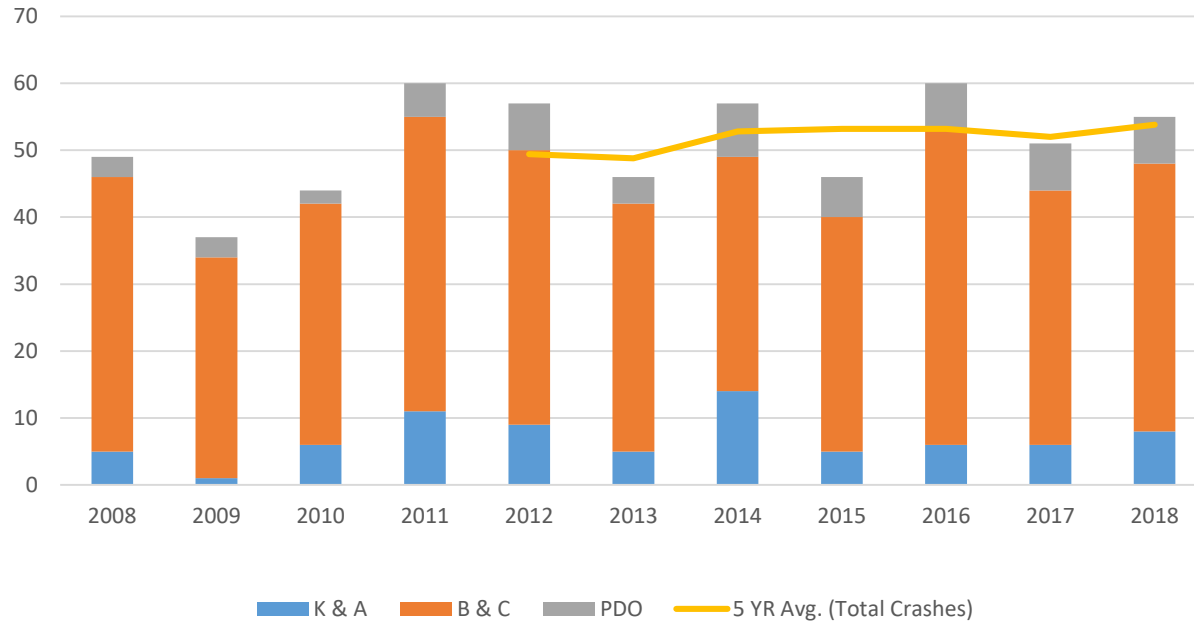


Overall & Severe Injury Crash Trends: Maps

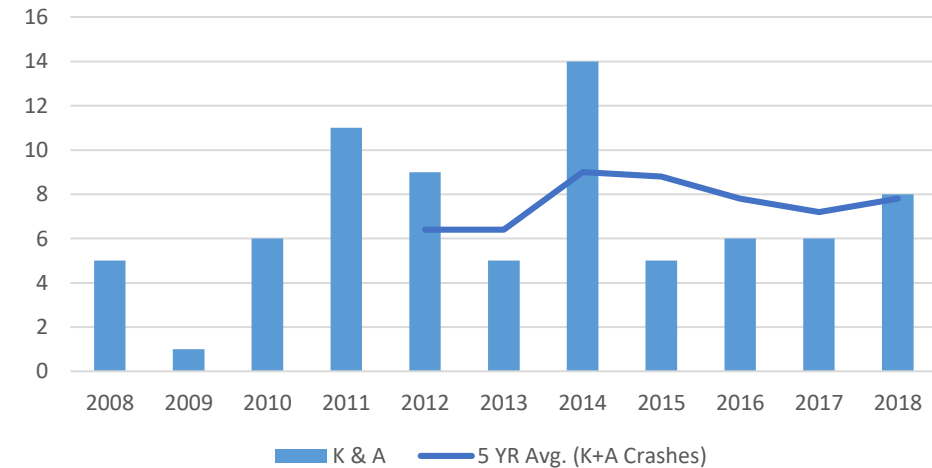


Overall & Severe Injury Crash Trends: Pedestrian Involved

Annual Pedestrian Crashes by Severity Group

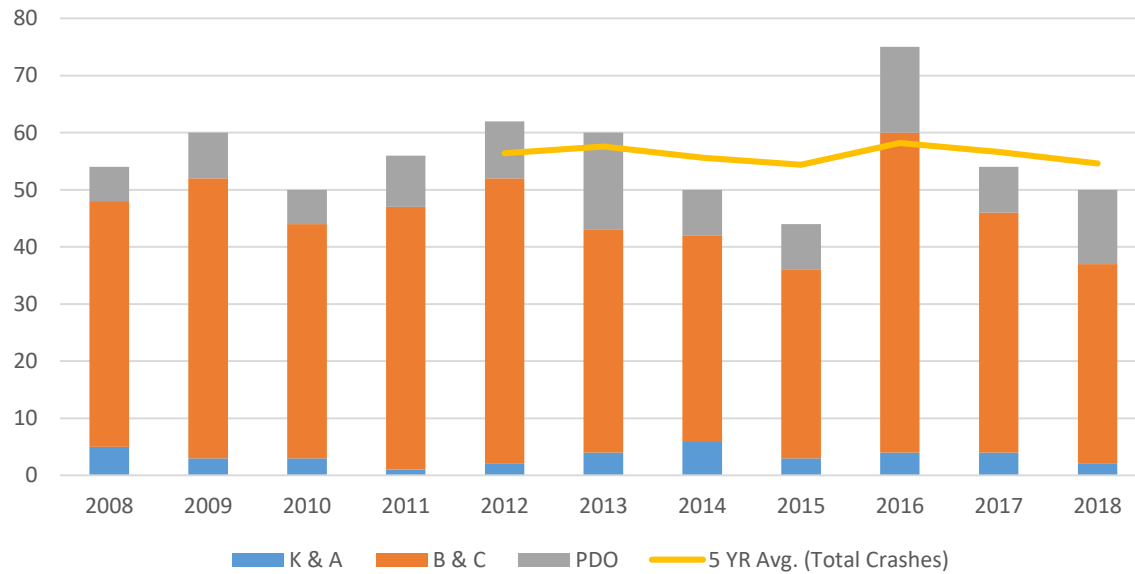


Annual Pedestrian K+A Crashes

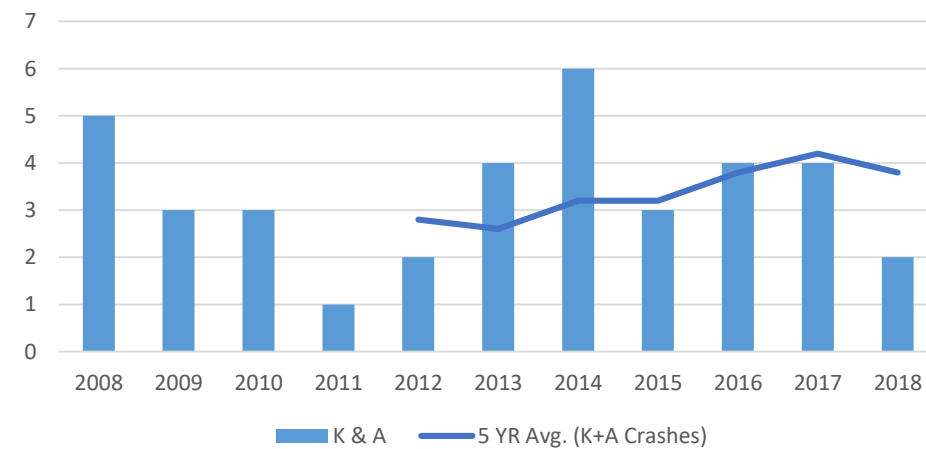


Overall & Severe Injury Crash Trends: Bicyclist Involved

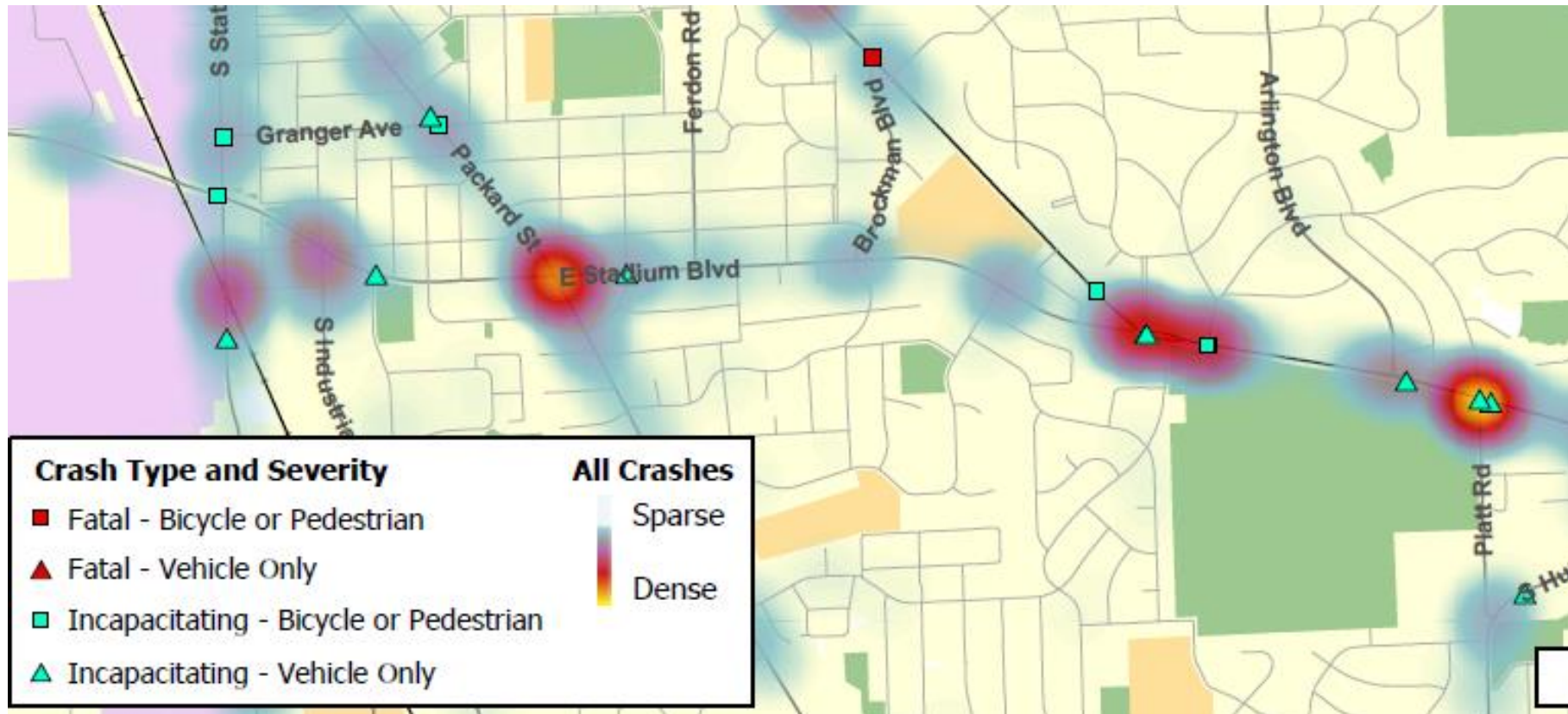
Annual Bicycle Crashes by Severity Group



Annual Bicycle K+A Crashes

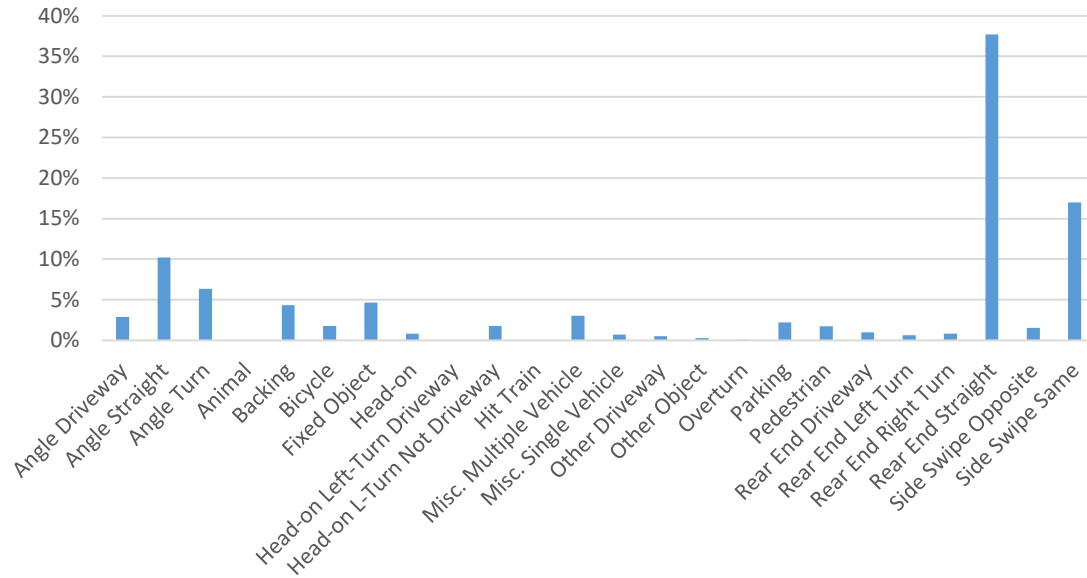


Overall & Severe Injury Crash Trends: Pedestrian & Bicyclist Maps

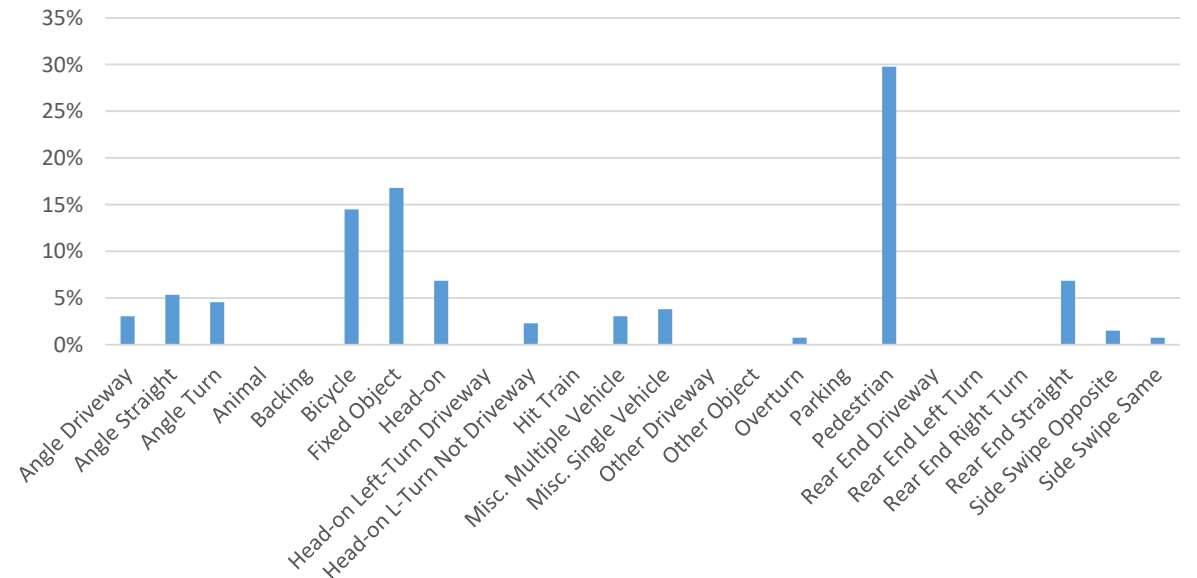


Overall & Severe Injury Crashes: Crash Types

All Crashes by Type of Crash (% of 5 Year Avg. Crashes)

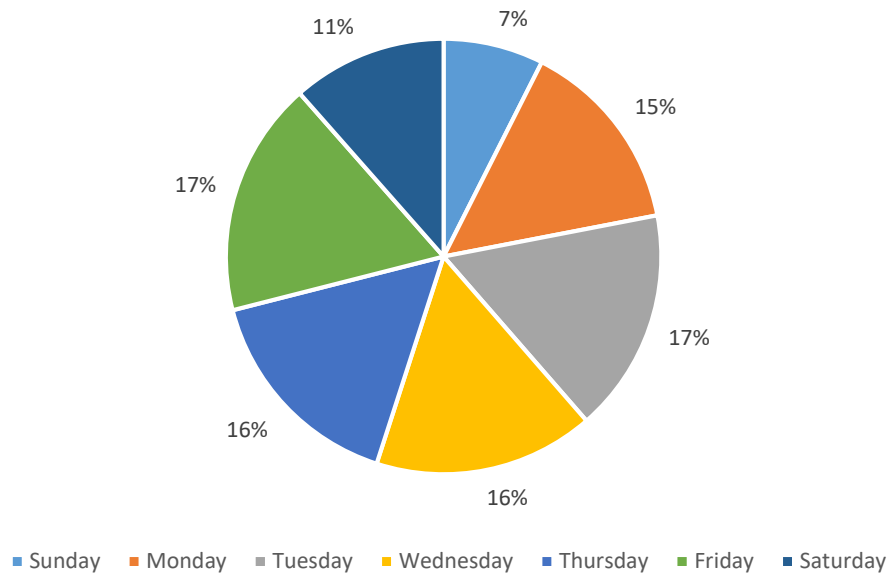


Severe Injury Crashes by Type of Crash (% of 5 Year Avg. Crashes)

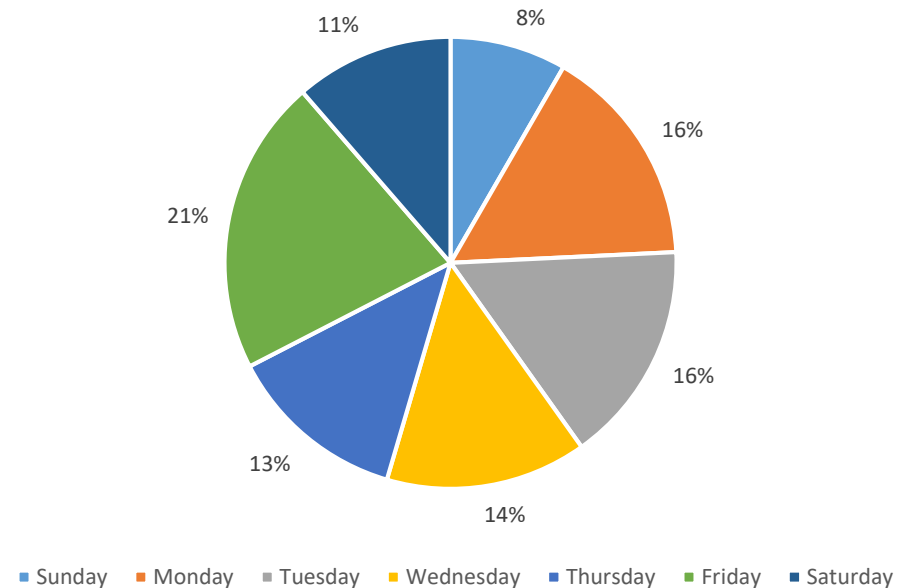


Overall & Severe Injury Crash Temporal Conditions: Day of Week

All Crashes by Day of Week (% of 5 Year Average)

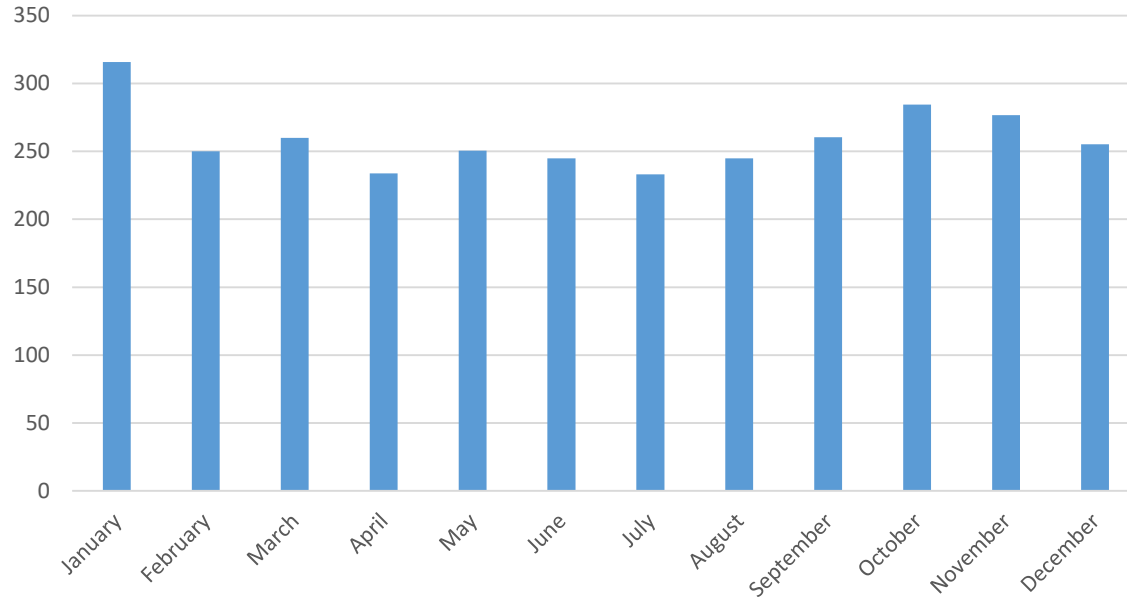


Severe Injury Crashes by Day of Week (% of 5 Year Average)

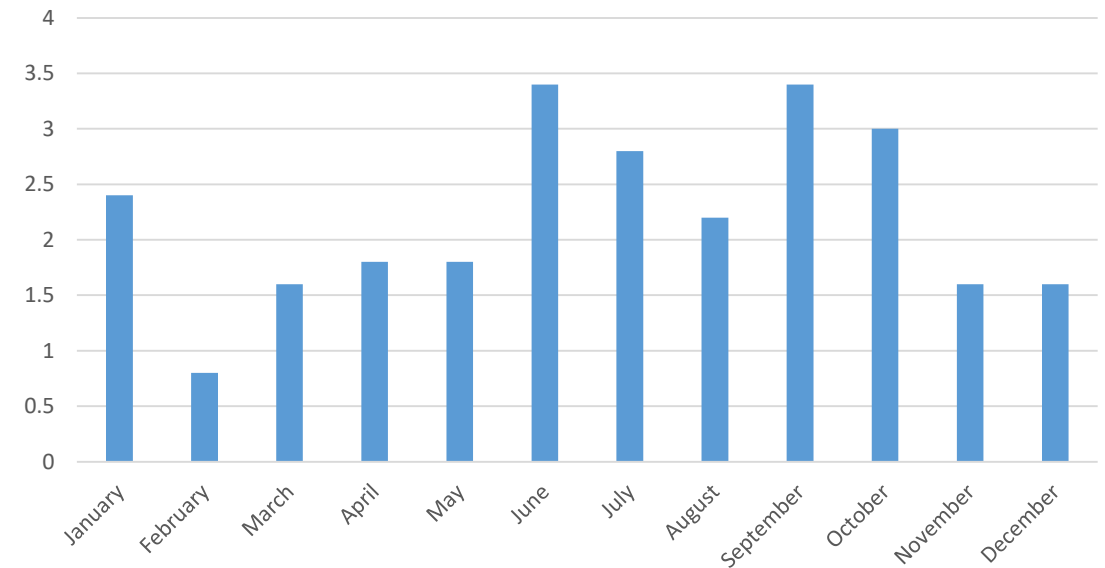


Overall & Severe Injury Crash Temporal Conditions: Month

All Crashes by Month (5 Year Avg.)

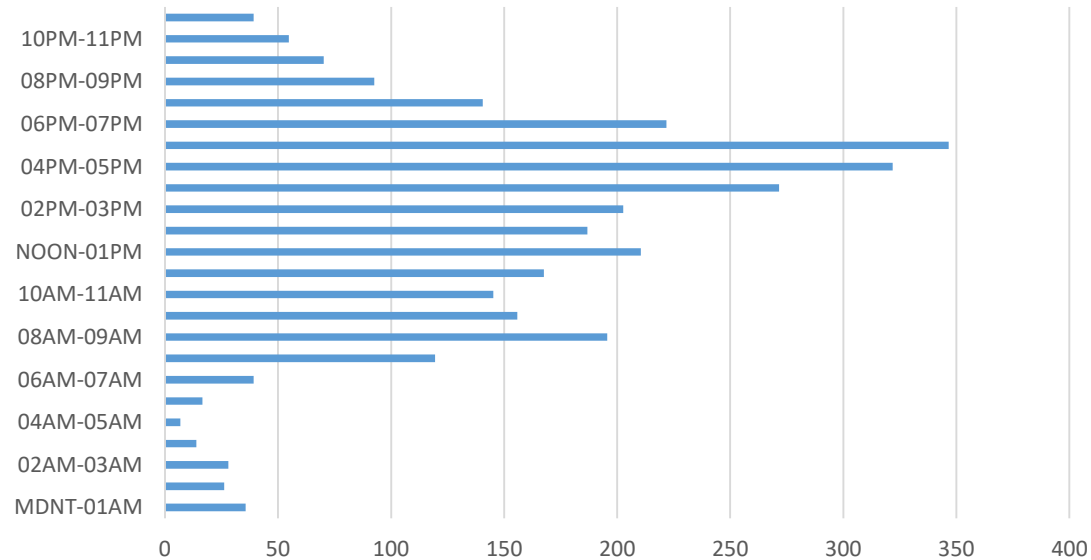


Severe Injury Crashes by Month (5 Year Avg.)

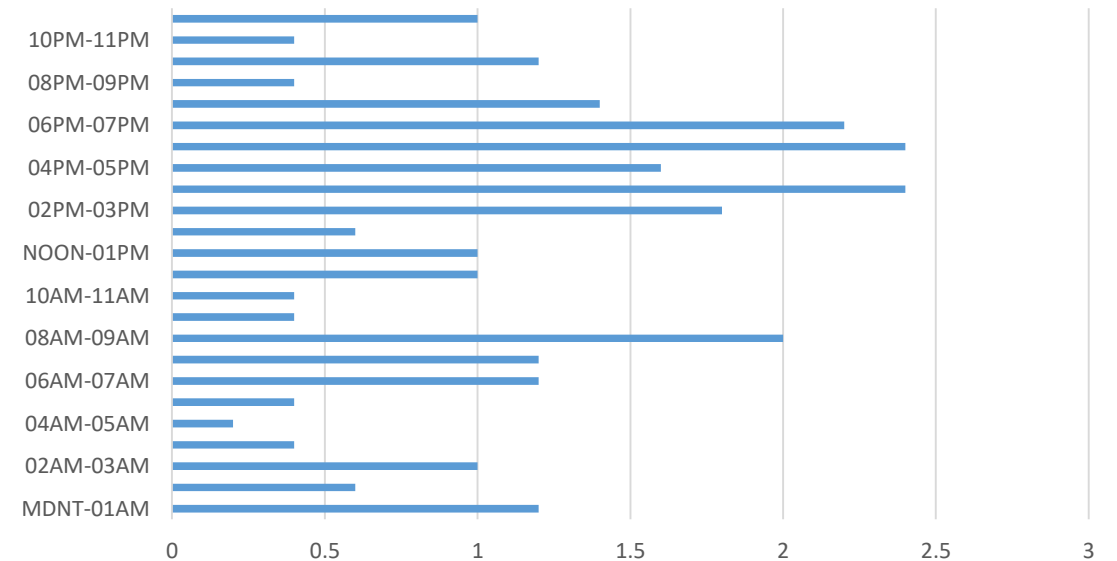


Overall & Severe Injury Crash Temporal Conditions: Time of Day

All Crashes by Time of Day (5 Year Avg.)

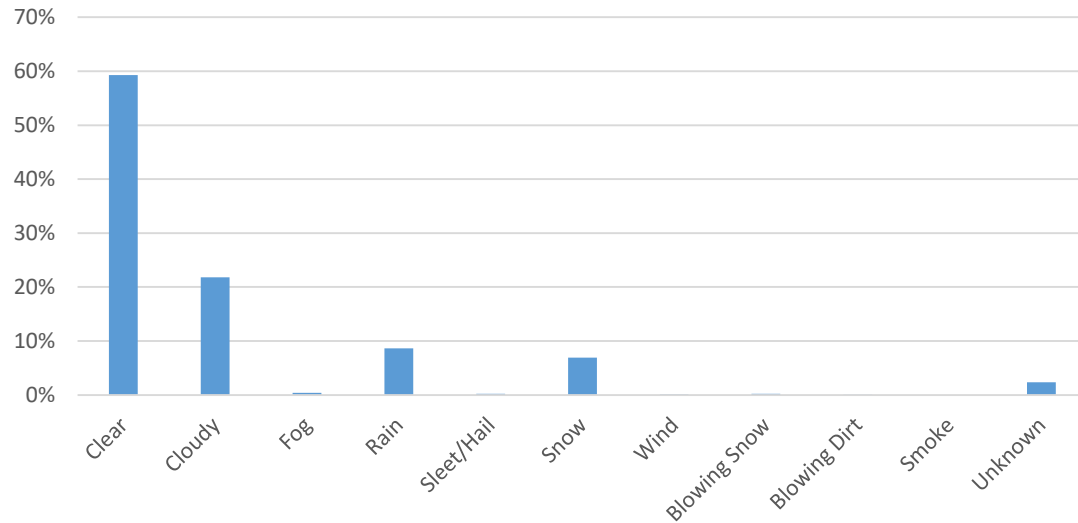


Severe Injury Crashes by Time of Day (5 Year Avg.)

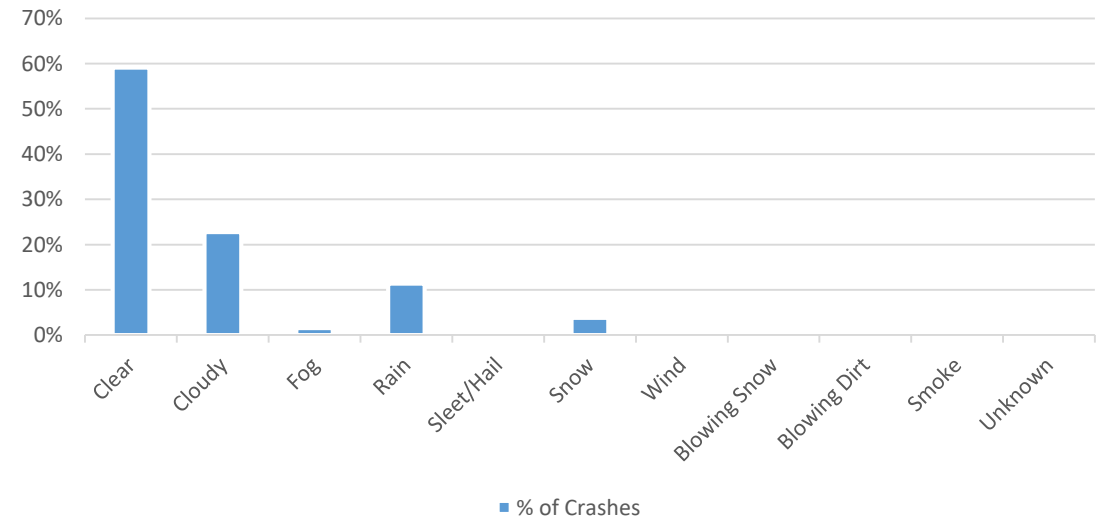


Overall & Severe Injury Crash Temporal Conditions: Weather Conditions

All Crashes by Weather Conditions (% of 5 Year Avg. Crashes)



Seve Injury Crashes by Weather Conditions (% of 5 Year Avg. Crashes)



■ % of Crashes