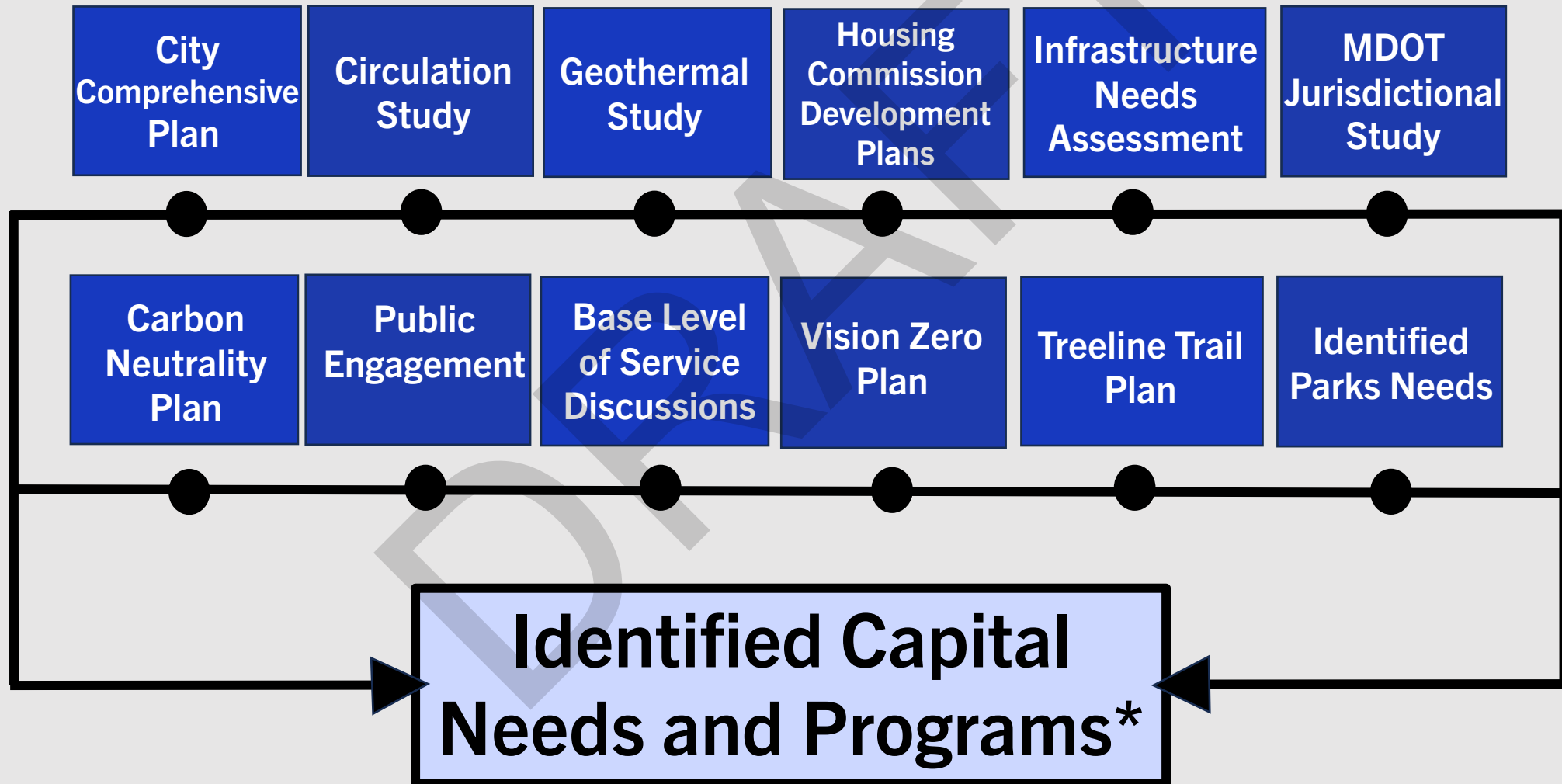


DRAFT

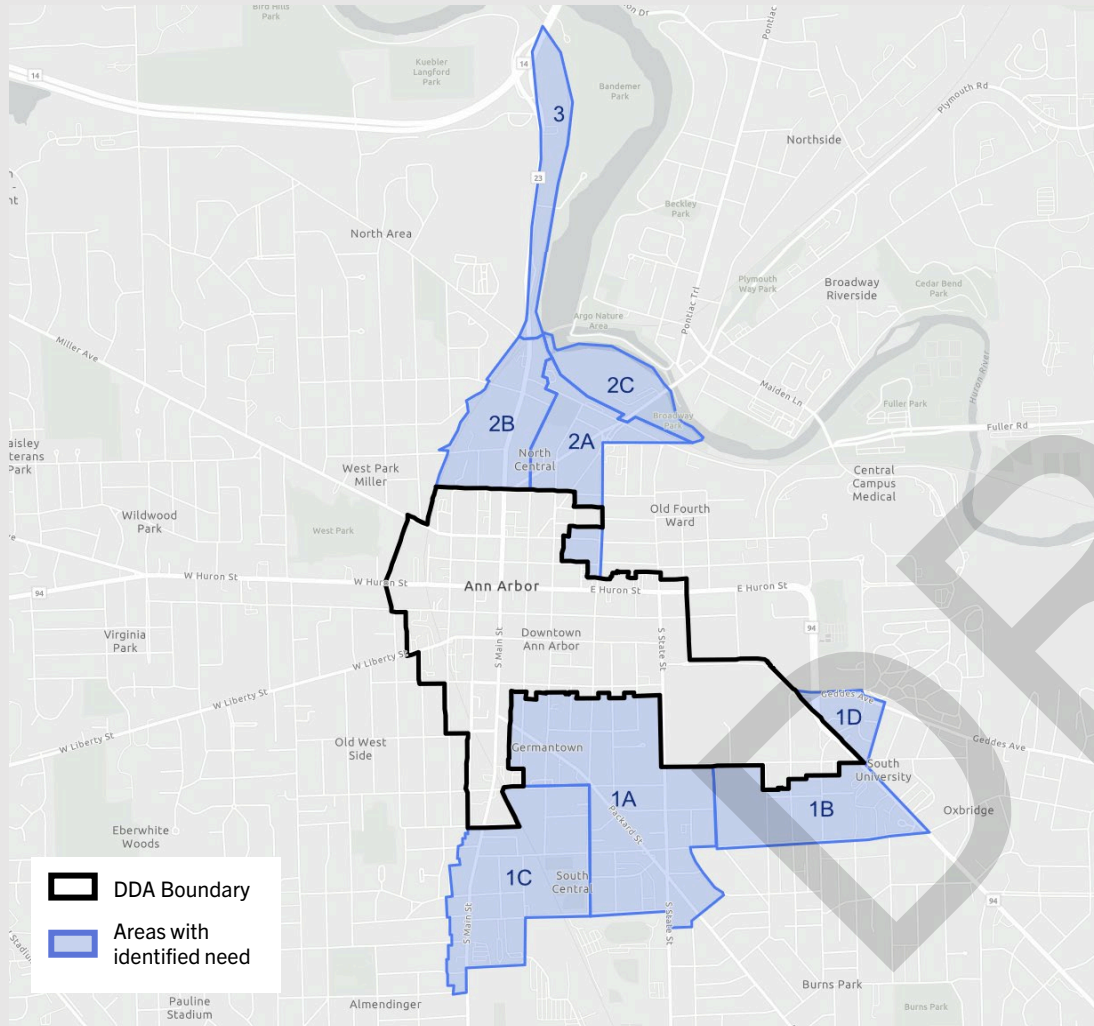
IDENTIFIED INFRASTRUCTURE NEEDS 2.13.2025

Identifying Projects and Programs

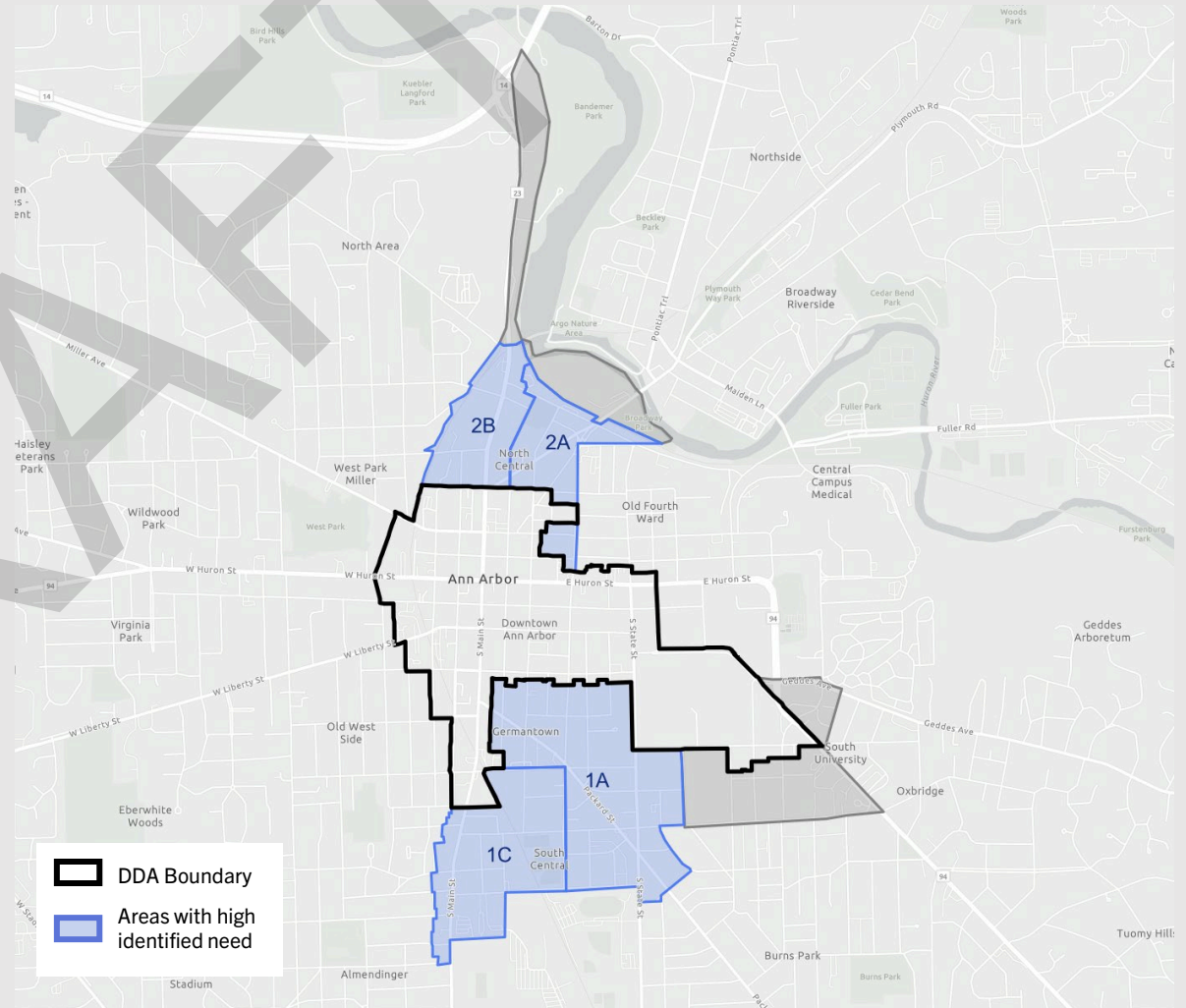


**Staff will continue to refine and prioritize identified needs through June 2025*

Areas where infrastructure needs were explored



Areas with high identified need



BIKEWAY / TRAIL IMPROVEMENT



Project Name	Limits	Boundary Area	Scope	Total Cost	Coordinated Utility Needs
Chapin Street - Miller Bikeway to West Park connector	Miller Ave. to West Park driveway	DDA	Connect Miller Ave Bikeway to West Park. Convert sidewalk into a wide concrete shared-use path and extend behind playground to existing trail in West Park. Requires relocating a curb and adjusting utility poles (primarily telecom). Re-striping, milling, and filling where needed to identify the shared-use path. Project reason: improve non-motorized access to West Park and the west side neighborhood via the West Park Path. Informed by safety and access goals - improving safe access to recreation.	\$770,000	
Division Street Bikeway Extension	Catherine St. to Broadway Bridge	Area 2A	Extend the curb-separated two-way bikeway on Division Street from Catherine Street to the Broadway Bridge. Strengthen access to downtown, a center for services, community, education, and employment. Informed by equity and safety goals - prioritizing those who are disproportionately injured and transportation cost-burdened. Corridor identified through People-Friendly Streets and Circulation Study. Does not include any coordinated utility work.	\$1,220,000	
Broadway-Plymouth Sidepath	Broadway Bridge to Plymouth	Area 2A, Area 2C	Curb-separated two-way bikeway extension to Broadway path and B2B Informed by equity and safety goals - prioritizing those who are disproportionately injured and transportation cost-burdened. Does not include water main or sanitary.	\$720,000	
721 Trail	Starting at Kingsley, extend the First St. bikeway north + create a fully separated connection to the Summit St connector.	Area 2B	Two-way Bikeway extension from First Street to N. Main and Summit. Path is through 721 N. Main Street site. Includes landscape buffer adjacent to the path. Informed by safety and access goals - improving safe access to recreation. Corridor identified through Circulation Study. Does not include any coordinated utility work.	\$1,190,000	
Summit Connector	N. Main to 5th Ave and berm tunnel (Through Wheeler to Berm Tunnel and B2B)	Area 2A and 2B	Two-way bikeway extension on Summit from N. Main to 5th Ave, connecting to Berm tunnel and B2B. Informed by safety and access goals - improving safe access to recreation. Identified through. Includes small amount of water main upsizing. Includes stormwater, and sanitary lining work. Circulation Study.	\$3,360,000	Yes
Treeline Trail - Segments listed below		Area 2B	*** Does not include easement or acquisition***	\$0	
Treeline Phase 1 Option C	Rail tunnel through to 721 N. Main	Area 2B	Treeline elevated trail from 721 site to existing berm tunnel north of Depot using private property, MDOT rail right-of way, and some footings in the public ROW.	\$30,310,000	Yes
D: Miller Bridge Zone	Kingsley Condos to railroad tunnel south of Miller (at west park)	Area 2B	Treeline bridge over Miller + railroad tunnel	\$18,500,000	
E: Huron Gateway to Liberty	Tunnel @ west park to Liberty	DDA, West side	Treeline bridge over Huron	\$20,900,000	
F: Liberty to Williams	Liberty to William Street	DDA	Scope reduced to 20% given segment built as part of First Street bikeway	\$5,100,000	
G: Williams to Jefferson	William to south of Jefferson	DDA	Treeline on-grade trail within railroad ROW	\$2,800,000	
H: South Main Gateway	Jefferson & Ashley to Hill Street	DDA	Treeline Bridge over N. Main + floodplain	\$24,100,000	
I: Hill to Hoover	Hill to State @ Hoover	Area 1C , Area 1A	Treeline On-road section, Hill --> Greene --> Hoover --> State	\$4,100,000	
J: South Corridor to State	State south to Arch	Area 1A	Treeline On-road section, full reconstruction (First-Street like design)	\$14,800,000	

STREET NETWORK



Project Name	Limits	Boundary Area	Scope	Total Cost	Coordinated Utility Needs
Fifth / Division / Beakes Two-Way Restoration			Restore Fifth, Division, and Beakes to two-way. Safety and navigation improvements focused on slowing speeds and improving pedestrian crossings. Includes signal work, curb bump outs, and audible pedestrian signals. Potential for hardened centerlines and other safety improvements.	\$24,060,000	
Broadway Interchange	Broadway Bridge/Beakes/Division intersection	Area 2A	Safety and navigation improvements focused on slowing speeds and improving pedestrian crossings. Includes grading, signal work (including audible pedestrian signals), bump-outs, and crossing improvements. Incorporating bikeway / shared-use path connections to the Broadway Bridge shared use path. Includes stormwater and sanitary sewer lining. Identified through Circulation Study.	\$11,200,000	Yes
Ann Street Two-Way Restoration	N Fifth to Division	DDA, Area 2A	Ann Street two-way restoration from N. Fifth Ave to Division. Safety and navigation improvements focused on slowing speeds and improving crossings. Includes signal work (including audible pedestrian signals), bump-outs, and crossing improvements. Includes stormwater and sanitary sewer lining. Identified through Circulation Study.	\$6,560,000	Yes
MDOT Jurisdictional Support					
N. Main	Huron to Kingsley	DDA	Lane reconfiguration, 2-way separated bike lanes, speed limit reductions, round-about, crossing improvements, and leading pedestrian intervals. Street resurface. Includes water main upsizing and replacement due to age. Includes sanitary lining.	\$11,730,000	Yes
Huron Street	1st to Washtenaw	DDA	Dedicated transit lanes, crossing improvements, and speed limit reductions. Improve transit riding experience by improving reliability and efficiency. Strengthen access to downtown, a center for services, community, education, and employment. Informed by equity goal - prioritizing those who are disproportionately injured and transportation cost-burdened. Includes street resurfacing, water main upsizing and replacement due to age. Includes sanitary lining.	\$21,450,000	Yes
Washtenaw Ave	Washtenaw Court to South University	DDA	Dedicated transit lanes, crossing improvements, and speed limit reductions. Improve transit riding experience by improving reliability and efficiency. Strengthen access to downtown, a center for services, community, education, and employment. Informed by equity goal - prioritizing those who are disproportionately injured and transportation cost-burdened. Includes street resurfacing. Includes water main upsizing and replacement due to age. Includes sanitary lining.	\$9,850,000	Yes
Jurisdictional Support in Expansion Area					
Expansion N. Main	Kingsley to W Summit St	2B	Lane Reconfiguration, 2-way separated bike lanes, speed limit reductions, round-about, crossing improvements, and leading pedestrian intervals. Informed by safety and access goals - improving safe access to recreation. Street resurface. Includes water main upsizing and replacement due to age. Includes sanitary lining.	\$11,950,000	
Expansion Washtenaw Ave	South University to Hill St.	Area 1B	Dedicated transit lanes, crossing improvements, and speed limit reductions. Dedicated transit lanes, crossing improvements, and speed limit reductions. Improve transit riding experience by improving reliability and efficiency. Strengthen access to downtown, a center for services, community, education, and employment. Informed by equity goal - prioritizing those who are disproportionately injured and transportation cost-burdened. Street resurfacing. Includes water main upsizing and replacement due to age. Includes sanitary lining.	\$9,630,000	Yes

TRANSIT



By 42-BRT - Own work, CC BY-SA 4.0,
<https://commons.wikimedia.org/w/index.php?curid=128227029>



By Lengau - Own work, CC BY-SA 4.0,
<https://commons.wikimedia.org/w/index.php?curid=143246726>

Project Name	Limits	Boundary Area	Scope	Total Cost	Coordinated Utility Needs
Huron Street Dedicated Transit Lanes & BRT	Chapin to Glen	DDA	Remove travel lane(s) to install dedicated transit lanes and bus rapids transit (BRT) and improve transit riding experience by improving reliability and efficiency. Strengthen access to downtown, a center for services, community, education, and employment. Informed by equity goal - prioritizing those who are disproportionately injured and transportation cost-burdened. Includes water main upsizing and replacement due to age. Includes sanitary lining. Includes stormwater infrastructure.	\$16,100,000	Yes
BRT Stations on Huron	4x Stations on Huron	DDA	Level boarding stations and transit stop amenities installed as part of Huron Street Dedicated Transit Lanes & BRT.	\$5,600,000	
Transit Queue Jump Lanes + TSP - Fifth Ave	Packard to Beakes	Area 1A, DDA, Area 2A	Improve transit riding experience by improving reliability and efficiency. Strengthen access to downtown, a center for services, community, education, and employment. Informed by equity goal - prioritizing those who are disproportionately injured and transportation cost-burdened. Signal work + repurposing right of way to include south-bound queue jump lanes at each intersection approach (Kingsley to Hill with minimal parking removal) transit signal head + TSP tech. Includes additional curb/bump-out adjustments. No coordinated utility work.	\$2,050,000	
Plymouth-Broadway-Beakes Queue Jump & Transit	5th Ave to Broadway St.	Area 2C	Improve transit riding experience by improving reliability and efficiency. Strengthen access to downtown, a center for services, community, education, and employment. Informed by equity goal - prioritizing those who are disproportionately injured and transportation cost-burdened. Repurpose ROW with south bound queue jump lane at Broadway and Swift Street and south bound transit lanes. Mill & Fill and restripe lanes. Beakes curbline adjusted. Repurpose one travel lane with transit only.	\$1,875,000	
State Street Transit Lane Extension	S. University to Arch St.	DDA, and Area 1A	Dedicated north-bound transit lane on State Street. Extends the transit only lane planned for South U to State Street. Requires full corridor reconstruction to provide transit lane width and bikeway width. Includes moving curbline on one side of the roadway. Re-making the separated bikeway as 1-way lanes or 2-way lanes if there isn't sufficient space. Streetscape repair on one side of the street. Includes stormwater infrastructure, watermain upsizing and replacement due to age, and sanitary sewer lining.	\$18,941,841	Yes
Downtown Transit Center Capacity Support	Blake Transit Center	DDA	Support TheRide with expanding capacity at Blake and/or acquire additional property.	\$30,000,000	
Transit Stop Upgrades - 15x Shelters	Throughout	DDA	New bus shelters with seating, lighting, real time information, public wifi. ADA improvements, if needed.	\$750,000	
Transit Stop Upgrades - x5 Shelters	Throughout	1A	New bus shelters with seating, lighting, real time information, public wifi. ADA improvements, if needed.	\$250,000	
Transit Stop Upgrades - x1 Shelters	Throughout	1B	New bus shelters with seating, lighting, real time information, public wifi. ADA improvements, if needed.	\$50,000	
Transit Stop Upgrades - x3 Shelters	Throughout	1C	New bus shelters with seating, lighting, real time information, public wifi. ADA improvements, if needed.	\$150,000	
Transit Stop Upgrades - x2 Shelters	Throughout	2A	New bus shelters with seating, lighting, real time information, public wifi. ADA improvements, if needed.	\$100,000	
Transit Stop Upgrades - x1 Shelters	Throughout	2B	New bus shelters with seating, lighting, real time information, public wifi. ADA improvements, if needed.	\$50,000	

STREETSCAPE + RECONSTRUCTION



Project Name	Limits	Boundary Area	Scope	Total Cost	Coordinated Utility Needs
Fifth / Division Reconstruction (includes Broadway Bridge interchange, Beakes, and Ann Street)	Beakes from N Main to Broadway; Fifth Ave from Beakes to Packard; Division from Beakes to Packard; The Broadway interchange; Ann Street from 5th Ave to Division.	DDA, Area 1A, 2A	Reconstructs major downtown corridors to meet a range of needs and goals, including Fifth Ave, Division, Beakes, and Broadway interchange. Restore streets to two-way. Safety and navigation improvements focused on slowing speeds, improving crossings. Includes signal work (including audible pedestrian signals), bump-outs and crossing improvements. Extends the Division Street two-way separated bikeway to Broadway and constructs transit queue jump lanes. Strengthen access to downtown, a center for services, community, education, and employment. Informed by equity and safety goals - prioritizing those who are disproportionately injured and transportation cost-burdened. Some streetscape work where lacking today, including new lighting, seating, street trees, and landscaping, stormwater. Includes Ann Street two-way restoration. Includes extensive water main upsizing and replacement due to age. Includes extensive stormwater work. Includes sanitary sewer lining. Identified through Circulation Study.	\$36,790,000	yes
Liberty Street Curbless/Shared Streetscape + Reconstruction	Curbless: State to Ashley Standard: Ashley to First	DDA	Streetscape First to Ashley. Curbless Street, Ashley to Liberty. Steet reconstruction and streetscape including new lighting, seating, landscaping/street trees, bike parking, wider sidewalks, and improved crossing. Reduced vehicle speeds, improved accessibility (including APS) and safety. Provides flexibility for special events. Includes stormwater upgrades. Includes water main replacement due to age. Includes sanitary sewer lining. Update electrical capacity to support events and amenities. Circulation Study recommendation - key connection between Main Street and State Street.	\$31,470,000	yes
Washington Street Streetscape + Reconstruction	Curbless: Ashley to Main Slow street: 3rd St. to Ashley and Main to State	DDA	Streetscape from YMCA to Ashley Street. Curbless from Ashley to Main, and slow street from Main to State. Full extent includes an urban bike blvd treatment to maintain slow speeds. Includes street reconstruction and stormwater. Slow street section, seating, streetlights, tree pits, bumpouts, expanded sidewalks, bike parking, pavers, parking wayfinding. Wider sidewalks, and improved crossing. Reduced vehicle speeds, improved accessibility (including APS), and safety. Update electrical capacity to support events and amenities. Includes water main upsizing and replacement due to age. Includes sanitary lining. Circulation Study recommendation.	\$24,640,000	yes
Maynard Curbless/Shared Streetscape + Reconstruction	Liberty to William	DDA	Curbless Street reconstruction from William to Liberty. Includes stormwater, seating, streetlights, tree pits, bumpouts, expanded sidewalks, bike parking. Wider sidewalks, and improved crossing. Reduced vehicle speeds, improved accessibility (including APS) and safety. Update electrical capacity to support events and amenities. Mid-block crossing improvements parking structure art at Maynard Parking Structure. Includes water main upsizing and replacement due to age. Includes sanitary sewer lining. Circulation Study recommendation.	\$12,870,000	yes
Church Street Curbless/Shared Streetscape + Reconstruction	South U to private alley	DDA	Curbless Street reconstruction from Forest alley to South University. Includes stormwater, seating, streetlights, tree pits, bumpouts, expanded sidewalks, bike parking. Update electrical capacity to support events and amenities. Includes water main upsizing and replacement due to age. Includes sanitary sewer lining. Circulation Study recommendation.	\$7,550,000	yes
Forest Street Curbless/Shared Streetscape + Reconstruction	Standard: Washtenaw to South U Flexible: South U intersection to Willard	DDA, Area 1B	Curbless Street reconstruction from Willard to Washtenaw. Includes stormwater upgrades, seating, streetlights, tree pits, bumpouts, expanded sidewalks, bike parking. Improved accessibility for parking and special events. Update electrical capacity to support events and amenities. Parking structure art at Forest Parking Structure. Includes water main upsizing and replacement due to age. Includes sanitary sewer lining. Circulation Study recommendation.	\$9,660,000	yes

Project Name	Limits	Boundary Area	Scope	Total Cost	Coordinated Utility Needs
Miller Ave Streetscape	N Fourth to Ashley	DDA	Streetscape from Ashley to Fourth Ave. Seating, streetlights, new landscaping, street trees, wayfinding, enhanced crossing and public art throughout the corridor. Update electrical capacity. Includes stormwater upgrades. Includes water main upsizing and sanitary sewer lining.	\$5,710,000	yes
Fourth Ave Streetscape + Reconstruction	Kingsley to Liberty	DDA	Reconstruction from Liberty to Kingsley, stormwater upgrades, seating, new landscaping/trees, bumpouts, expanded sidewalks, improved crossings, bike parking, parking wayfinding, ADA parking. Accessible pedestrian signal upgrades. Includes water main upsizing and replacement due to age. Includes sanitary sewer lining.	\$16,390,000	yes
William Streetscape	Streetscape: State to First	DDA	Streetscape from State to First. Seating, streetlights and electrical capacity upgrades, new landscaping/tree pits, bike parking, pavers, parking wayfinding, crossing improvements, audible pedestrian signal upgrades. Includes stormwater upgrades. Includes water main upsizing and replacement due to age. Includes sanitary sewer lining.	\$15,550,000	yes
N. Main Street Improvements	Huron to Summit	DDA, Area 2B	Improved pedestrian connection from Huron to Summit, with wayfinding and placemaking from downtown to riverfront. Includes sidewalk, public art, and stormwater upgrades. Includes water main upsizing and replacement due to age. Includes sanitary sewer lining.	\$6,540,000	yes
S Main St. Streetscape	Packard to Madison	DDA	Placemaking (gateway enhancements),and lighting. Stormwater improvements and utility upgrades, seating, new landscaping/trees, bumpouts and improved crossings, expanded sidewalks, bike parking. Accessible pedestrian signal upgrades. Includes small amount of water main upsizing and replacement due to need. Includes sanitary sewer lining.	\$9,600,000	yes
Alley Enhancements / Reconstruction	Throughout	DDA	Street resurfacing, screening for solid waste/laundry receptacles, placemaking, parking structure wayfinding, and lighting.	\$22,410,000	yes
Packard St. + Triangle Streetscape + Packard Bike Lane - Curbed Separation	Packard from Hill St. to Arch St.; Hill from Packard to State; State from Hill through Packard	Area 1A	Reconstruction from Hill to Arch Street. Streetscape and the addition of curbed bike Lanes on Packard. Placemaking, lighting, and stormwater upgrades. Seating, new landscaping/trees, bumpouts and improved crossings, expanded sidewalks, bike parking. Accessible pedestrian signal upgrades. Includes water main upsizing and replacement due to age. Includes sanitary sewer lining.	\$13,540,000	yes
South University Alley Enhancements	City-owned parcel between Church and Forest	DDA, Area 1B	Potential curbless street reconstruction, placemaking, pedestrian amenities, parking structure art. Includes small amount of water main upsizing and replacement due to need.	\$3,910,000	yes
Alley creation	Throughout	outside of DDA	Alley creation in densifying areas. Per alley cost. Unable to project 30 years out without knowing how many alleys are needed.	\$1,650,000	

PLACEMAKING ENHANCEMENTS



Project Name	Limits	Boundary Area	Scope	Total Cost
Thompson Street Key Connector	Liberty to William	DDA	Public art, wayfinding, lighting, expanding tree grates, enhancing the tree canopy, plantings, and seating.	\$1,850,000
South U to State Neighborhood Connector (State Eastward)	State from William to South U South U from State to East U	DDA	Public art, and wayfinding connecting two commercial districts - State Street and South University.	\$6,400,000
South University Flexible Enhancements	E University to Washtenaw	DDA	Tactical sidewalk expansion. Construct platform dining in on street parking spaces. Does not include water main and sanitary utility work.	\$360,000
Main Street Flexible Enhancements	William to Huron	DDA	Tactical sidewalk expansion. Construct platform dining in on street parking spaces. Does not include water main and sanitary utility work.	\$960,000
5th Ave Riverfront + Nature Connections	Kingsley to river	Area 2A	Improve pedestrian connections from downtown to the river. Includes public art, wayfinding, lighting improvements, and crossing improvements. No coordinated utility work, surface treatments only. B2B Connection.	\$2,350,000
4th Ave - Riverfront + Nature Connections	Kingsley to river	Area 2A	Improve pedestrian connections from downtown to the river. Includes public art, wayfinding, lighting improvements, and crossing improvements. No coordinated utility work, surface treatments only.	\$1,880,000
Streetlight Installation	Throughout	DDA	Install streetlights on streets where there are currently none installed, or there are only lights on one half of the street. Includes upgrading electrical capacity on those streets. Streets include Miller Ave, Ashley, Washington, William, Division, S. Main, Huron, and Forest. Overlaps with lighting and electrical upgrades identified in streetscape projects.	\$5,500,000
Event Bollard Installations	Intersections adjacent to event streets (Washington, Main, Liberty, State, Maynard, South U)	DDA	Retractable event bollards to protect events from vehicle-based attack, improve event operations and storage, increase access to protective barriers for all downtown events.	\$6,000,000
Elevate Program - 30 year total DDA	Throughout	DDA	Public art and placemaking installations that enhance the downtown experience for all people. Elevate history and storytelling; diversity, equity, and inclusion; play, interaction, and creativity; placemaking.	\$3,750,000
Elevate Program - 30 year total 1A	Throughout	Area 1A		TBD
Elevate Program - 30 year total 1B	Throughout	Area 1B		TBD
Elevate Program - 30 year total 1C	Throughout	Area 1C		TBD
Elevate Program - 30 year total 1D	Throughout	Area 1D		TBD
Elevate Program - 30 year total 2A	Throughout	Area 2A		TBD
Elevate Program - 30 year total 2B	Throughout	Area 2B		TBD
Elevate Program - 30 year total 2C	Throughout	Area 2C		TBD
Elevate Program - 30 year total 3	Throughout	Area 3		TBD

PARKS AND PLAZAS



Project Name	Limits	Boundary Area	Scope	Total Cost	Coordinated Utility Needs
Farmer's Market Reconstruction (Park)	Fifth Avenue, Detroit Street, Fourth Avenue	DDA	Urban Park Large: Full site reconstruction. Includes capacity for a new market building with public restrooms. Also, stormwater, lighting, landscaping, accessibility improvements, public art, and solar. Creating a welcoming and well functioning Farmer's Market with the goal of strengthening the Market's presence downtown and serving more customers/more vendors. Enhances local economy by strenghtening local goods and food producers.	\$21,000,000	Yes
Sculpture Plaza Reconstruction (Park)	Fourth Avenue and Catherine	DDA	Urban Park Small: Full site reconstruction. Create a space for community interaction through improved design. Lighting, landscaping, accessibility improvements, seating, play elements, public art. Electrical access for events. Urban Park emphasis on creating flexible space for community, arts and culture, and play.	\$1,700,000	Yes
Liberty Plaza Reconstruction (Park)	Liberty and Division	DDA	Urban Park Large: Stormwater, lighting, landscaping, accessibility improvements, public art, amenities and restrooms. Electrical access for events. Urban Park emphasis on creating flexible space for community, arts and culture, and play.	\$6,000,000	Yes
State Street/North University Plaza (ROW)	State and North University	DDA	Urban Park Small: Stormwater, lighting, landscaping, accessibility improvements, seating, play elements, public art. Electrical access for events. Urban Park emphasis on creating flexible space for community, arts and culture, and play.	\$1,800,000	Yes
South University/East University Plaza (ROW)	South University and East University	DDA	Urban Park Small: Stormwater, lighting, landscaping, accessibility improvements, seating, public art. Electrical access for events. Urban Park emphasis on creating flexible space for community, arts and culture, and play. Includes a small amount of water main work.	\$2,110,000	Yes
Hanover Square Park	Packard and Division	Area 1A	Naturalized Park Small: Lighting, enhanced landscaping, stormwater retention, accessibility improvements, seating, play elements, public art. Electrical access for events. Naturalized park emphasis to promote social and environmental resiliency and offer natural havens as City continues to grow and develop.	\$1,100,000	Yes
North Main Park	Between Main and 4th Ave.	Area 2B	Naturalized Park Small: Lighting, enhanced landscaping and stormwater retention, accessibility improvements, seating, play elements, public art. Electrical access for events. Naturalized park emphasis to promote social and environmental resiliency and offer natural havens as City continues to grow and develop.	\$2,300,000	Yes
Depot Park	N Main and Depot	Area 2B	Naturalized Park Small: Enhanced landscaping and stormwater retention, lighting, seating, public art. Naturalized park emphasis to promote social and environmental resiliency and offer natural havens as City continues to grow and develop.	\$400,000	Yes
Wheeler Park	4th Ave, Depot, and 5th Ave	Area 2A	Urban Park Large: Enhanced landscaping and stormwater retention, lighting, accessibility improvements, public art, amenities and restrooms. Electrical access for events. Urban Park emphasis on creating flexible space for community, arts and culture, and play. Include public art that honors the history of Ann Arbor's historic Black neighborhoods.	\$6,440,000	Yes
Forsythe Park	Packard and Arch	Area 1A	Naturalized Park Small: Enhanced landscaping and stormwater retention, lighting, seating, public art. Electrical access for events. Naturalized park emphasis to promote social and environmental resiliency and offer natural havens as City continues to grow and develop.	\$1,000,000	Yes
Broadway Park	Broadway near Depot	Area 2C	Naturalized Park Large: Enhanced landscaping and stormwater retention, lighting, seating, public art. Public restroom. Naturalized park emphasis to promote social and environmental resiliency and offer natural havens as City continues to grow and develop.	\$12,800,000	Yes
721 Park and Trail	721 North Main Street	Area 2B	Naturalized Park Large: Shared-use trail with enhanced landscaping and stormwater retention, lighting, seating, public art, public restroom. Naturalized park emphasis to promote social and environmental resiliency and offer natural havens as City continues to grow and develop.	\$17,540,000	Yes

UTILITIES



Project Name	Limits	Boundary Area	Scope	Total Cost
Water main Replacement (bucket project) DDA	Throughout	DDA	Replace water mains due to age and/or undersized. Increase capacity for new residents and improve resiliency of water infrastructure.	\$8,370,000
Water main Replacement (bucket project) Area 1A	Throughout	Area 1A	Replace water mains due to age and/or undersized. Increase capacity for new residents and improve resiliency of water infrastructure.	\$7,400,000
Water main Replacement (bucket project) Area 1B	Throughout	Area 1B	Replace water mains due to age and/or undersized. Increase capacity for new residents and improve resiliency of water infrastructure.	\$5,630,000
Water main Replacement (bucket project) Area 1C	Throughout	Area 1C	Replace water mains due to age and/or undersized. Increase capacity for new residents and improve resiliency of water infrastructure.	\$4,360,000
Water main Replacement (bucket project) Area 2A	Throughout	Area 2A	Replace water mains due to age and/or undersized. Increase capacity for new residents and improve resiliency of water infrastructure.	\$3,230,000
Water main Replacement (bucket project) Area 2B	Throughout	Area 2B	Replace water mains due to age and/or undersized. Increase capacity for new residents and improve resiliency of water infrastructure.	\$730,000
Water main Replacement (bucket project) Area 3	Throughout	Area 3	Replace water mains due to age and/or undersized. Increase capacity for new residents and improve resiliency of water infrastructure.	\$490,000
Sanitary Sewer Lining DDA	Throughout	DDA	Line sanitary sewers to improve infrastructure resiliency.	\$1,100,000
Sanitary Sewer Lining Area 1A	Throughout	Area 1A	Line sanitary sewers to improve infrastructure resiliency.	\$390,000
Sanitary Sewer Lining Area 1B	Throughout	Area 1B	Line sanitary sewers to improve infrastructure resiliency.	\$160,000
Sanitary Sewer Lining Area 1C	Throughout	Area 1C	Line sanitary sewers to improve infrastructure resiliency.	\$320,000
Sanitary Sewer Lining Area 2A	Throughout	Area 2A	Line sanitary sewers to improve infrastructure resiliency.	\$450,000
Sanitary Sewer Lining Area 2B	Throughout	Area 2B	Line sanitary sewers to improve infrastructure resiliency.	\$90,000
Sanitary Sewer Lining Area 3	Throughout	Area 3	Line sanitary sewers to improve infrastructure resiliency.	\$300,000

Project Name	Limits	Boundary Area	Scope	Total Cost
Housing Commission - Utility And Streetscape Support	Sites: Community Dental Center, Palio	DDA	Including streetscape, upsized water mains, stormwater infrastructure, sanitary capacity. Cost does not include solar and geothermal to support net zero development but that may be a desired approach (may be best through district solar/geothermal or a grant from the DDA's affordable housing fund).	\$400,000
Downtown Library - Utility And Streetscape Support	Site: AADL downtown branch	DDA	Including streetscape, upsized water mains, stormwater infrastructure, sanitary capacity. Cost does not include solar and geothermal to support net zero development but that may be a desired approach (may be best through district solar/geothermal or a grant from the DDA's affordable housing fund).	\$580,000
City Sites (Not Housing Commission) - Utility And Streetscape Support	Sites: 415 W. Washington, First and William, Kline Lot	DDA	Including streetscape, upsized water mains, stormwater infrastructure, sanitary capacity. Cost does not include solar and geothermal to support net zero development but that may be a desired approach (may be best through district solar/geothermal or a grant from the DDA's affordable housing fund).	\$1,940,000
County Sites - Utility And Streetscape Support	Sites: Ann & Main, Washtenaw County Admin Parking Lot, Washtenaw County Courthouse Parking Lot,	DDA	Including streetscape, upsized water mains, stormwater infrastructure, sanitary capacity. Cost does not include solar and geothermal to support net zero development but that may be a desired approach (may be best through district solar/geothermal or a grant from the DDA's affordable housing fund).	\$4,160,000

SUSTAINABILITY ENERGY



A) Customer-Owned Solar



Residents who own a solar array can sign up for the SEU, use power from their solar system, and sell any excess power to the SEU to be distributed through microgrids or stored on the SEU battery storage system.

B) SEU-Owned Solar



Residents who sign up for the SEU and have good solar potential may have an SEU-owned solar system installed on their home. They can use power from this solar system, and excess power will be distributed through microgrids or stored on the SEU battery storage system.

C) SEU, No On-Site Solar



Residents who sign up for the SEU and do not have good solar power potential may receive SEU power distributed through microgrids or from the SEU battery storage system. All SEU participants are also eligible for other SEU offerings, such as electrification assistance and energy efficiency improvements.

D) Renters



Renters are eligible for all applicable SEU offerings, as long as enrollment and programs are done in coordination with the landlord or property owner.

E) Community Solar

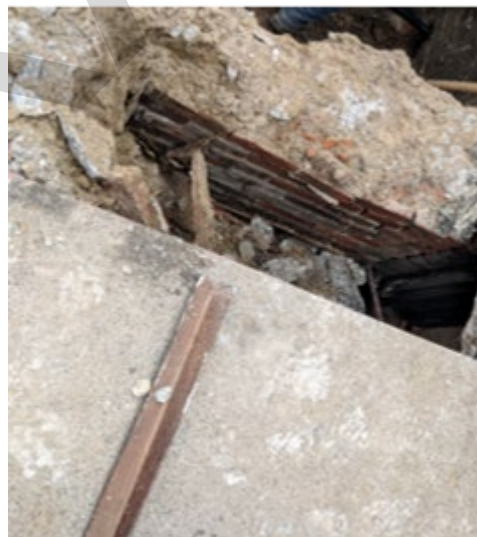


Large solar installations provide power to multiple buildings, through microgrids and the SEU battery storage system. Subscribers pay per kWh of usage from the SEU.



Project Name	Limits	Boundary Area	Scope	Total Cost
Geothermal Installation	Throughout	DDA	Install geothermal to support creation of sustainable energy utility improving resiliency and sustainability of City's energy system. Support local economy by reducing power outages, business closure days, and lost inventory. Support residential quality of life by providing redundant energy generation during DTE power outages.	\$105,000,000
Geothermal Installation	Throughout	Area 1A		\$70,000,000
Geothermal Installation	Throughout	Area 1B		\$70,000,000
Geothermal Installation	Throughout	Area 1C		\$70,000,000
Geothermal Installation	Throughout	Area 1D		\$35,000,000
Geothermal Installation	Throughout	Area 2A		\$70,000,000
Geothermal Installation	Throughout	Area 2B		\$70,000,000
Geothermal Installation	Throughout	Area 2B		\$70,000,000
Geothermal Installation	Throughout	Area 2C		\$35,000,000
Geothermal Installation	Throughout	Area 3		\$35,000,000
District Solar & Wind Energy Assessment and Implementation	Throughout	DDA	Assess potential for district/neighborhood level solar, identify locations, and implement. Support creation of sustainable energy utility improving resiliency and sustainability of City's energy system. Support local economy by reducing power outages, business closure days, and lost inventory. Support residential quality of life by providing redundant energy generation during DTE power outages. May prioritize connections first to Housing Commission and public sites, like Downtown Library.	\$106,000,000
District Solar & Wind Energy Assessment and Implementation	Throughout	Area 1A		\$36,200,000
District Solar & Wind Energy Assessment and Implementation	Throughout	Area 1B		\$15,700,000
District Solar & Wind Energy Assessment and Implementation	Throughout	Area 1C		\$36,200,000
District Solar & Wind Energy Assessment and Implementation	Throughout	Area 1D		\$15,700,000
District Solar & Wind Energy Assessment and Implementation	Throughout	Area 2A		\$6,920,000
District Solar & Wind Energy Assessment and Implementation	Throughout	Area 2B		\$9,890,000
District Solar & Wind Energy Assessment and Implementation	Throughout	Area 2C		\$9,500,000
District Solar & Wind Energy Assessment and Implementation	Throughout	Area 3		\$4,870,000

CAPITAL MAINTENANCE



Project Name	Limits	Boundary Area	Scope	Total Cost
Annual DDA repairs - 30 year total DDA	Throughout	DDA	Maintain infrastructure unique to downtown. Includes trip hazards in the amenity zone, replacing brick sidewalks with concrete, tree pit and tree grate maintenance, public bike parking, seating, etc.	\$13,500,000
Annual DDA repairs - 30 year total 1A	Throughout	Area 1A		\$10,454,264
Annual DDA repairs - 30 year total 1B	Throughout	Area 1B		\$4,552,170
Annual DDA repairs - 30 year total 1C	Throughout	Area 1C		\$6,800,761
Annual DDA repairs - 30 year total 1D	Throughout	Area 1D		\$1,138,909
Annual DDA repairs - 30 year total 2A	Throughout	Area 2A		\$3,614,348
Annual DDA repairs - 30 year total 2B	Throughout	Area 2B		\$3,736,452
Annual DDA repairs - 30 year total 2C	Throughout	Area 2C		\$2,296,753
Annual DDA repairs - 30 year total 3	Throughout	Area 3		\$2,290,427
Annual streetlight maintenance - 30 year total	Throughout	DDA	Capital maintenance of City-owned pedestrian streetlights including pole replacement, luminaire replacement, painting, electrical upgrades, etc.	\$4,500,000
Annual streetlight maintenance	Throughout	Area 1A		\$3,484,755
Annual streetlight maintenance	Throughout	Area 1B		\$1,517,390
Annual streetlight maintenance	Throughout	Area 1C		\$2,266,920
Annual streetlight maintenance	Throughout	Area 1D		\$379,636
Annual streetlight maintenance	Throughout	Area 2A		\$1,204,783
Annual streetlight maintenance	Throughout	Area 2B		\$1,245,484
Annual streetlight maintenance	Throughout	Area 2C		\$765,584
Annual streetlight maintenance	Throughout	Area 3		\$763,476

OTHER CAPITAL NEEDS

DRAFT

Project Name	Limits	Boundary Area	Scope	Total Cost
Public Restrooms - x4	Throughout	DDA	Scoped to include up to four permanent restrooms in downtown Ann Arbor. with the goal to provide a safe & dignified public restroom option for all people regardless of ability, gender, race, housing status, culture, and age.	\$3,000,000

SERVICE AND MAINTENANCE EXPANSION

26



Program Name	Boundary Area	Scope	Total Cost
Service and maintenance team - 30-year total	DDA	Service team to help fill identified service and maintenance gap and consolidate some existing DDA contracts. Scope includes sidewalk and curbside cleaning, including trash and debris removal. Landscape maintenance. Annual alley power washing. Snow removal and ice melt application at sidewalk ramps, bus stops, ADA parking spaces, and benches. Bikeway delineator maintenance and replacement. Brick, bench, and bike hoop repairs. Supplemental pedestrian trash can service when visitor volume is high. Barricade deployment. Seasonal light installation. Provide a consistent presence and service connection to educate and remind business owners of code requirements, connect directly with A2 fit it to report streetlight outages and infrastructure concerns, connect those in need with services.	\$30,000,000
Service and maintenance team	Area 1A		\$23,231,697
Service and maintenance team	Area 1B		\$10,115,934
Service and maintenance team	Area 1C		\$15,112,803
Service and maintenance team	Area 1D		\$2,530,910
Service and maintenance team	Area 2A		\$8,031,885
Service and maintenance team	Area 2B		\$8,303,227
Service and maintenance team	Area 2C		\$5,103,896
Service and maintenance team	Area 3		\$5,089,838

AFFORDABLE HOUSING SUPPORT



Solar panels were an addition to the Miller Manor property.



Program Name	Boundary Area	Scope	Total Cost
DDA Affordable Housing Fund 30 year total	DDA	DDA transfers 4.5% of TIF revenue every year from TIF to DDA Housing Fund. Funds can be spent on planning, development, and improvement of housing sites w/ incomes at or below 60% AMI.	\$22,711,600
DDA Affordable Housing Fund	Area 1A	DDA transfers 4.5% of TIF revenue every year from TIF to DDA Housing Fund. Funds can be spent on planning, development, and improvement of housing sites w/ incomes at or below 60% AMI.	TBD
DDA Affordable Housing Fund	Area 1B	DDA transfers 4.5% of TIF revenue every year from TIF to DDA Housing Fund. Funds can be spent on planning, development, and improvement of housing sites w/ incomes at or below 60% AMI.	TBD
DDA Affordable Housing Fund	Area 1C	DDA transfers 4.5% of TIF revenue every year from TIF to DDA Housing Fund. Funds can be spent on planning, development, and improvement of housing sites w/ incomes at or below 60% AMI.	TBD
DDA Affordable Housing Fund	Area 2A	DDA transfers 4.5% of TIF revenue every year from TIF to DDA Housing Fund. Funds can be spent on planning, development, and improvement of housing sites w/ incomes at or below 60% AMI.	TBD
DDA Affordable Housing Fund	Area 2B	DDA transfers 4.5% of TIF revenue every year from TIF to DDA Housing Fund. Funds can be spent on planning, development, and improvement of housing sites w/ incomes at or below 60% AMI.	TBD
DDA Affordable Housing Fund	Area 3	DDA transfers 4.5% of TIF revenue every year from TIF to DDA Housing Fund. Funds can be spent on planning, development, and improvement of housing sites w/ incomes at or below 60% AMI.	TBD

OTHER PROGRAMS

DRAFT

Program Name	Boundary Area	Scope	Total Cost
Customer and Visitor Data Support	DDA + All expansion areas	DDA-managed data subscriptions to help businesses, business districts, and event organizers track visit trends and impacts. The only cost that would increase with boundary change is staff increase to manage requests and customize reports.	\$600,000
Retail/small biz support or Incubator	Expansion areas only	Program to support new or fledgling businesses. If high-density zoning expands, some areas may experience redevelopment pressures and a significant increase in retail space. A DDA program could help strengthen businesses in expansion areas during this time of change, foster new retail businesses, and connect each with permanent retail space. Exploring a DDA white-box lease to support new and micro retail as well as in-transition businesses. Exploring partnership with WCC business entrepreneur program to help implement and administer the incubator, which could serve as a pipeline for WCC students. Per DDA state Statute, DDA program must support "underserved retail."	TBD
Sidewalk vault filling	DDA	Grant for sidewalk removal, fill, and sidewalk restoration for underground private building vaults. Removes a safety hazard and allows sidewalk (vault lid) to return to City and DDA maintenance.	\$1,500,000
Expanded Go!pass Program	All Expansion Areas	***FROM PARKING - NOT TIF EXPENSE*** Free transit pass for all employees within DDA District and expansion areas.	\$15,000,000