

1ST: 670 SF
 2ND: 706 SF
 3RD: 458 SF
 TOT: 1833 (DOES NOT INCL BSMT ENTRY)

Basement Floor Plan Type A Unit

Scale : 3/16" = 1' 0"

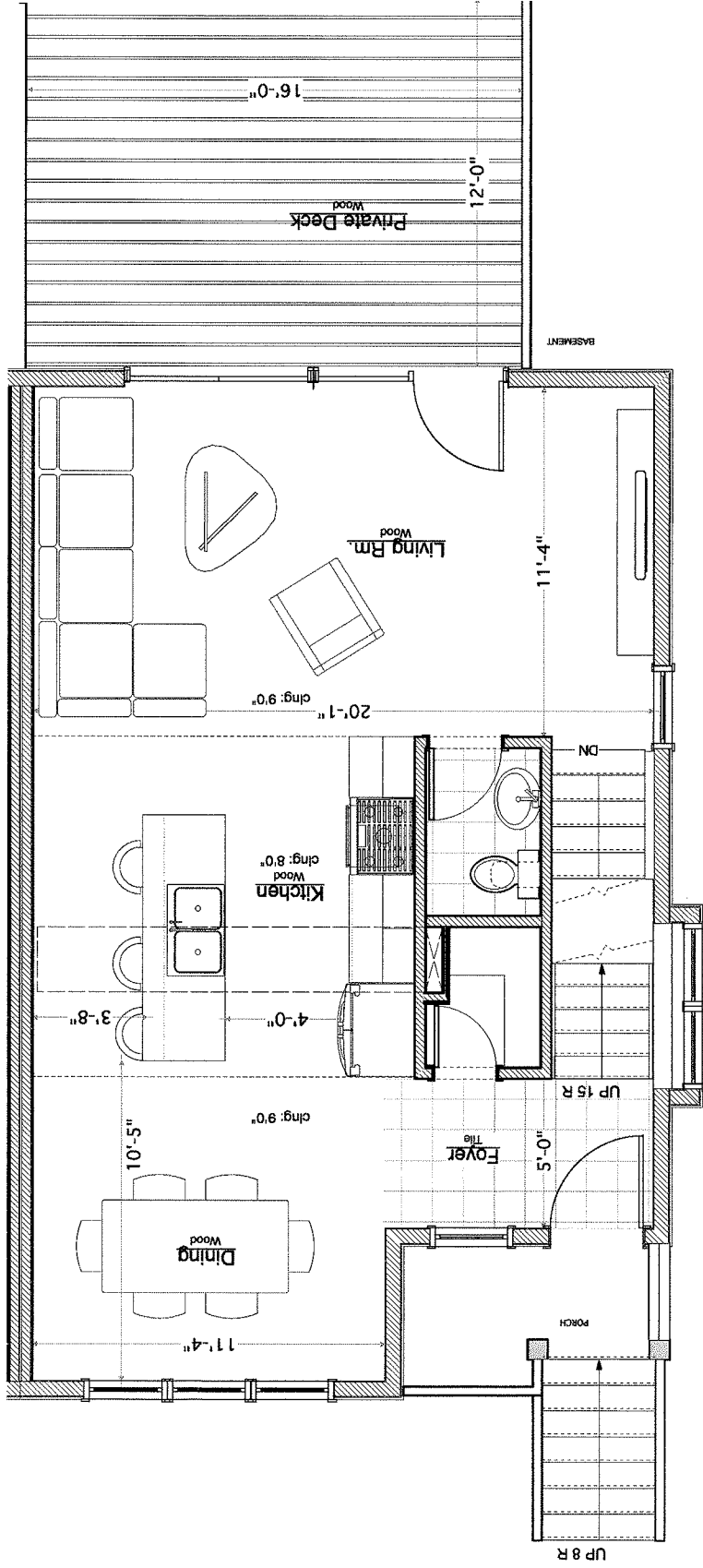
A1

303-307 DAVIS STREET 07.22.15

RUETER ASSOCIATES ARCHITECTS

515 Fifth Street, Ann Arbor, Michigan 48103
 phone: (734) 769-0070, fax: (734) 769-0167

Ann Arbor MI



First Floor Plan Type A Unit

AREA: 670 SF

Scale : 3/16" = 1'0"

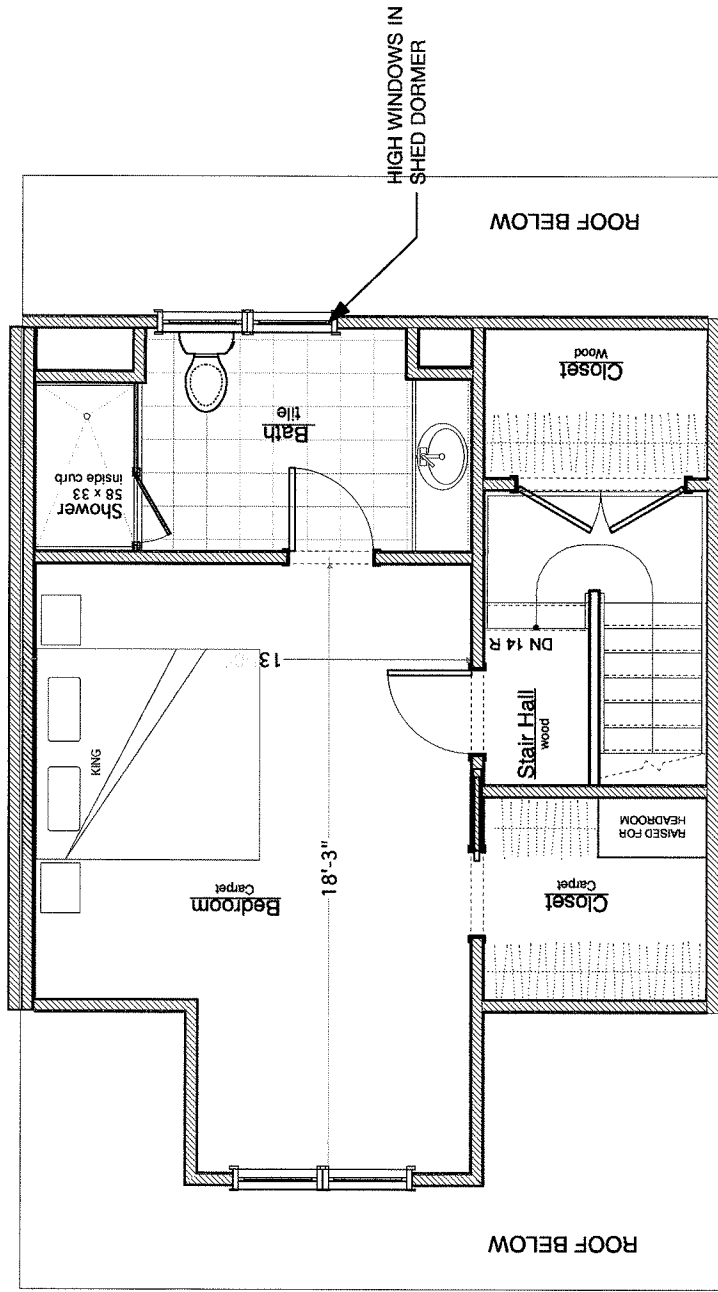
■ RUETER ASSOCIATES
ARCHITECTS

515 Fifth Street, Ann Arbor, Michigan 48103
phone: (734) 769-0070, fax: (734) 769-0167

303-307 DAVIS STREET

07.22.15

Ann Arbor MI



Attic Floor Plan Type A Unit

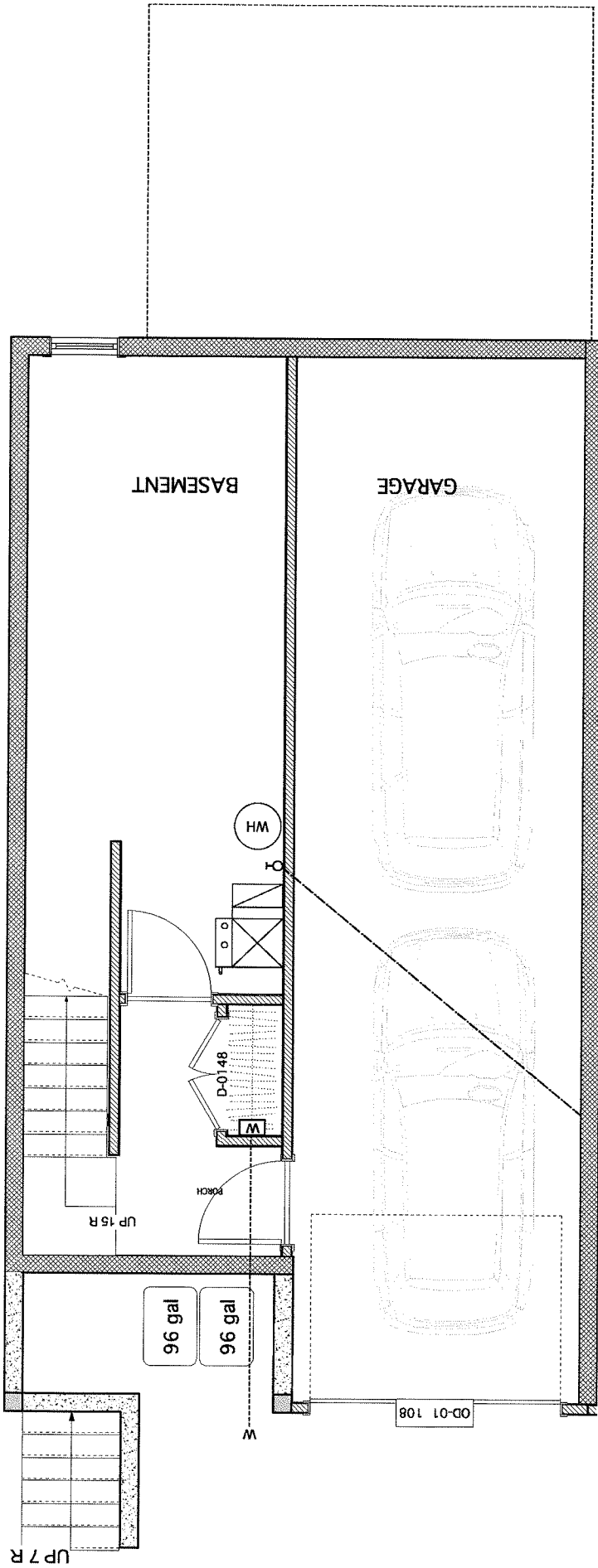
Scale : 3/16" = 1'0" AREA: 458 SF"

■ RUIETER ASSOCIATES
 ARCHITECTS
 515 Fifth Street, Ann Arbor, Michigan 48103
 phone: (734) 769-0070, fax: (734) 769-0167

303-307 DAVIS STREET 07.22.15

Ann Arbor MI

A4



1ST : 743 SF
 2ND : 790 SF
 3RD : 523 SF
 TOT : 2056 (DOES NOT INCL BSMT ENTRY)

Basement Floor Plan Type B Unit

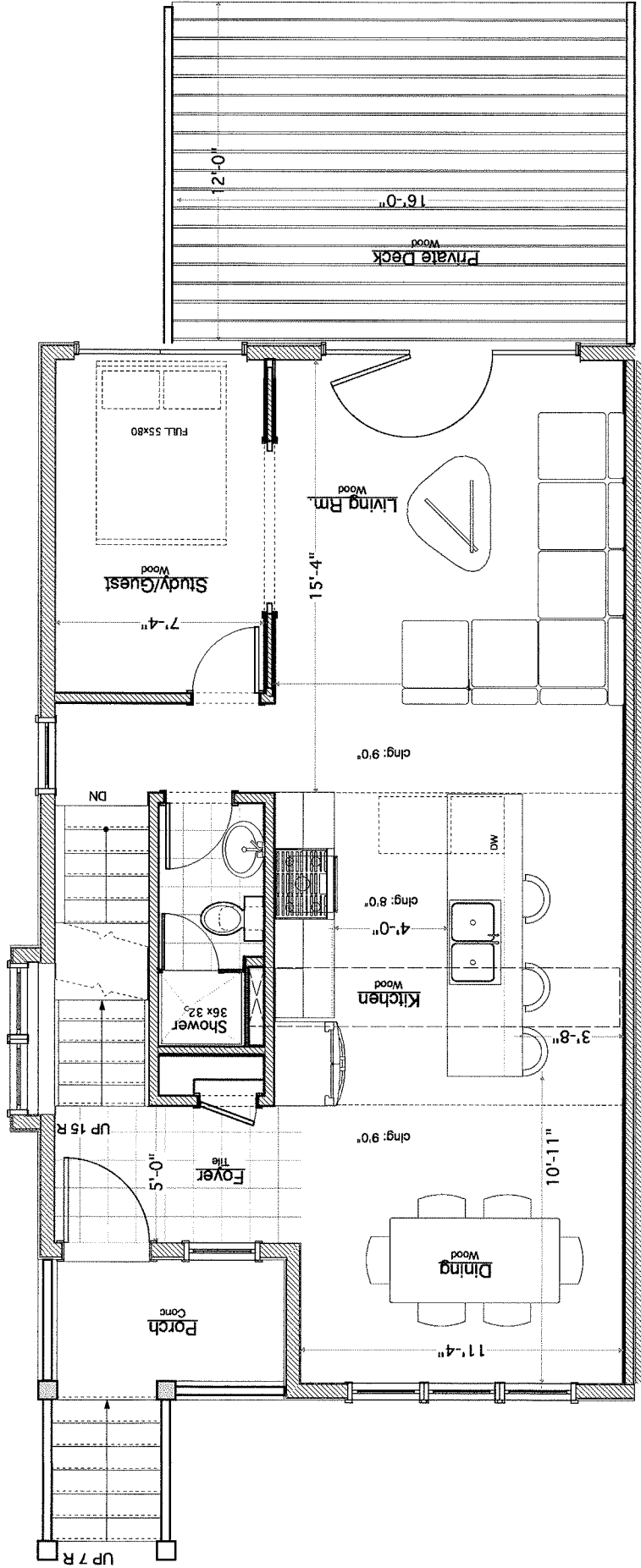
Scale : 3/16" = 1' 0"

■ RUEJTER ASSOCIATES
 ARCHITECTS

515 Fifth Street, Ann Arbor, Michigan 48103
 phone: (734) 769-0070, fax: (734) 769-0167

303-307 DAVIS STREET 07.22.15
 Ann Arbor MI

A5



First Floor Plan Type B Unit (Alt Study)

Scale : 3/16" = 1' 0"

AREA: 743

■ RUETER ASSOCIATES
ARCHITECTS

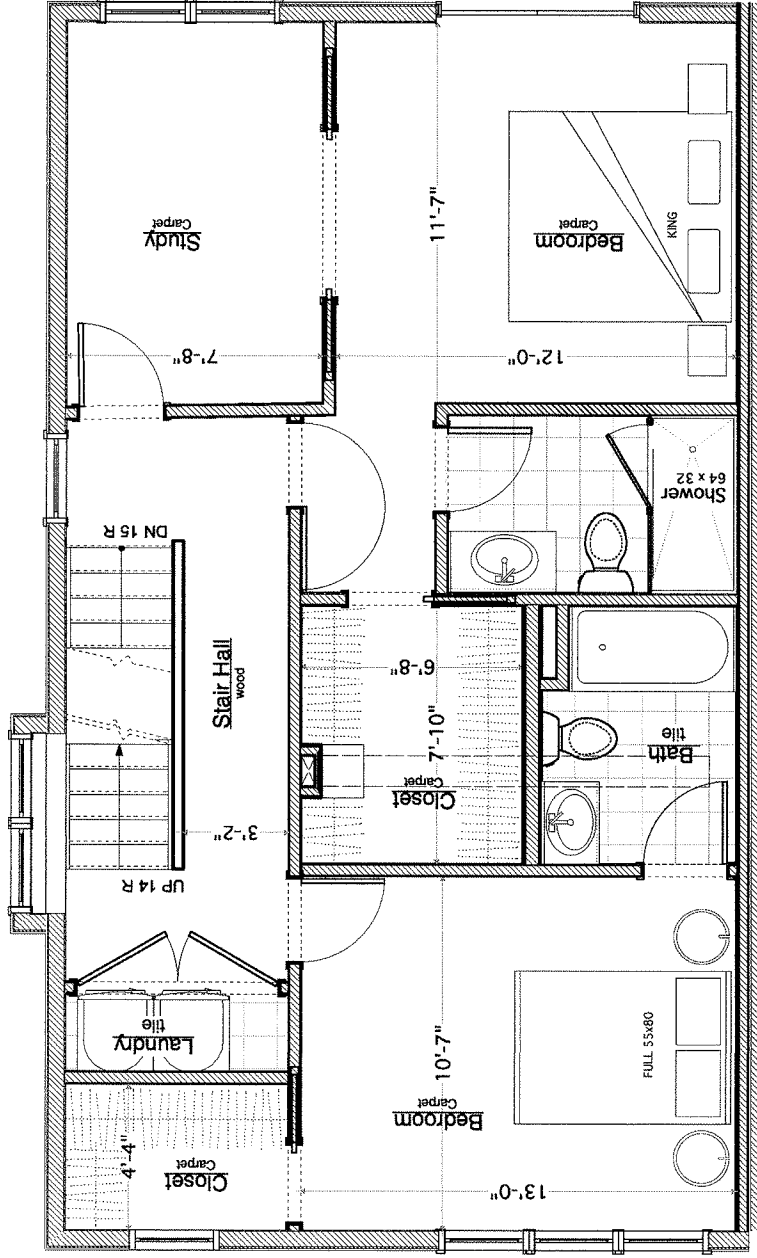
515 Fifth Street, Ann Arbor, Michigan 48103
phone: (734) 769-0070, fax: (734) 769-0187

303-307 DAVIS STREET

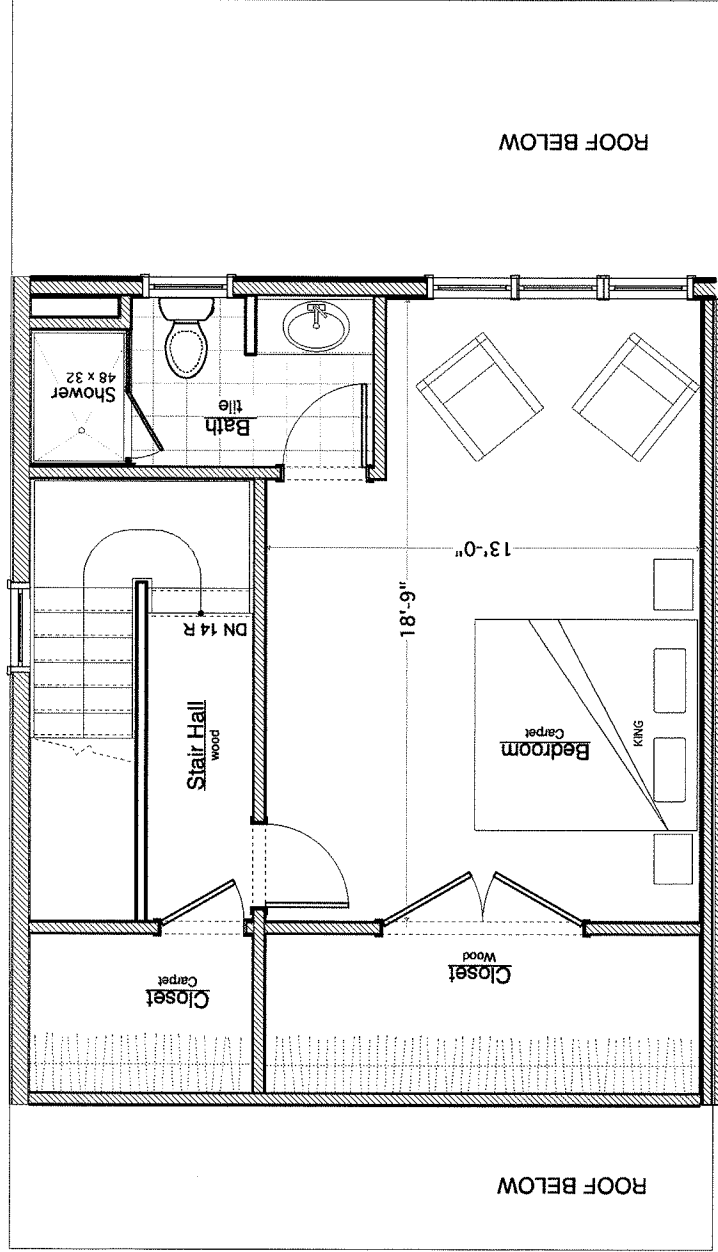
Ann Arbor MI

07.22.15

A7



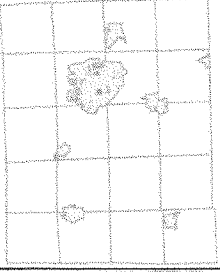
Second Floor Plan Type B Unit AREA: 790
 Scale : 3/16" = 1'0"



Attic Floor Plan Type B Unit AREA: 523
 Scale : 3/16" = 1' 0"

■ RUETER ASSOCIATES ■
 ARCHITECTS
 515 Fifth Street, Ann Arbor, Michigan 48103
 phone: (734) 769-0070, fax: (734) 769-0167

303-307 DAVIS STREET 07.22.15
 Ann Arbor MI



Legend

- Right of Way
- Quarter Sections
- Plat Boundary
- Parcels

THIS MAP REPRESENTS PARCELS AT THE TIME OF PRINTING. THE OFFICIAL PARCEL TAX MAPS ARE MAINTAINED SOLELY BY THE WASHINGTON COUNTY EQUALIZATION DEPARTMENT AND CAN BE OBTAINED BY CONTACTING THAT OFFICE AT 734-222-6662.

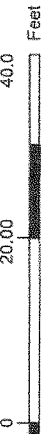
The information contained in this cadastral map is used to locate, identify and inventory parcels of land in Washington County for appraisal and taxing purposes only and is not to be construed as a "survey description". The information is provided with the understanding that the conclusions drawn from such information are solely the responsibility of the user. Any assumption of legal status of this data is hereby disclaimed.

NOTE: Parcels may not be to scale.
 7/21/2015

Notes

This map is a user generated static output from an Internet mapping site and is for reference only. Data layers that appear on this map may or may not be accurate, current, or otherwise reliable.

THIS MAP IS NOT TO BE USED FOR NAVIGATION



1: 240