

2018 Street Resurfacing Improvements

THURSDAY, JANUARY 18, 2018

TRANSPORTATION COMMISSION



Background & Overview

Goals & Objectives: Resurfacing projects are intended to restore the condition of road and street pavements from poor to excellent condition while also enhancing the functionality and safety for both motorized and non-motorized users.

Typically these projects:

- Are identified as candidates utilizing the City's Pavement Asset Management planning process, and programmed for funding and construction through the Capital Improvement Plan process.
- Are contained within the existing footprint of the roadway, and involve very little, if any, geometric changes.
- Require very little or no survey data collection.
- Are less complex and involve minimal, if any, detailed design.
- Require no additional right-of way or easements.

Background & Overview

Typical considerations and opportunities examined during project planning:

- Method(s) required to structurally rehabilitate and restore the pavement condition.
- Feasibility to incorporate improvements identified in the City's Non-motorized Transportation Plan.
- Feasibility to incorporate storm water management improvements, and other necessary drainage improvements.
- Necessary improvements to achieve compliance with current American's with Disabilities Act standards.
- Feasible and/or necessary safety improvements.

Background & Overview

Typical pavement rehabilitation and restoration methods:

- Pavement overlay (no removal of the existing pavement).
- Partial depth pavement removal and replacement (mill and overlay).
- Localized pavement repairs using full depth removal and replacement combined with an overlay or mill and overlay.
- Full depth pavement removal and replacement with base repairs, as required.
- Pavement pulverization, re-grading, and overlay.

Background & Overview

Typical Non-motorized Transportation Plan near-term improvements:

- Bike lanes.
- Narrower traffic lanes.
- Reconfiguration of traffic lanes (elimination of on-street parking, road diet/4 to 3 lane conversion).
- Mid-block crossings.
- Addition of sidewalks or asphalt paths.

Background & Overview

Typical drainage and storm water management improvements:

- Removal and replacement of concrete curb and gutter.
- Removal and replacement of storm water curb inlets.
- Changing the pavement cross slope(s).
- Infiltration basins.
- Oversized storm sewer pipes and drainage control structures.

Background & Overview

Typical ADA improvements:

- Removal and replacement of concrete sidewalk and sidewalk ramps.
- Addition of concrete sidewalk and sidewalk ramps.
- Sidewalk and sidewalk ramp repairs.

Background & Overview

Typical safety improvements:

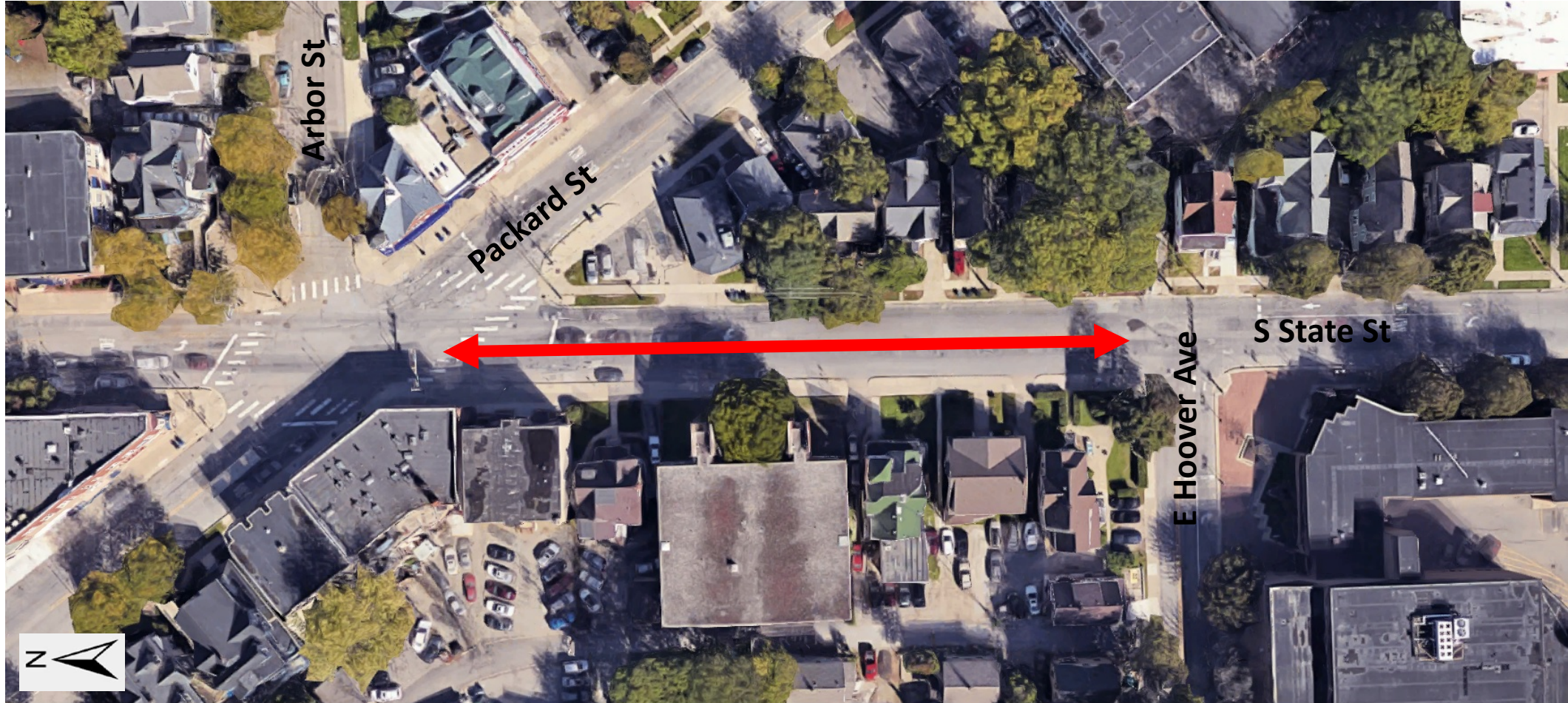
- Shortened crosswalks using curb bump-outs at intersections and mid-block crossings.
- Enhanced pavement markings and traffic signing to provide better visibility and guidance for users.

2018 Resurfacing Improvement Locations

- South State Street (E Hoover Ave to Packard St)
- Stone School Road (E Eisenhower Pkwy to Packard St)
- Jackson Avenue (Wagner Rd to City/MDOT Jurisdiction Limits near Weber's Inn)

South State Street (E Hoover Ave to Packard St)

↔ Project Extents



South State Street (E Hoover Ave to Packard St)

↔ Work Activity Limits



Proposed Work Activities: Mill and overlay to remove and replace the existing asphalt pavement overlying the existing concrete base pavement; concrete base pavement repairs, as required; removal and replacement of concrete curb and gutter segments, driveway openings, sidewalk and sidewalk ramps, as required; placement of new pavement markings; new and replacement traffic signing; and restoration of any lawn and turf areas disturbed by the construction activities.

South State Street (E Hoover Ave to Packard St)

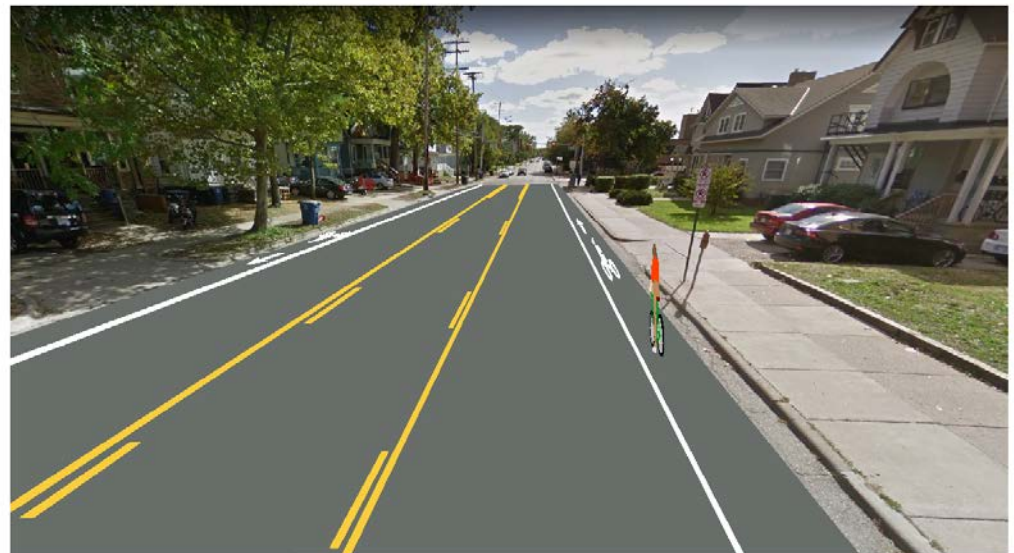
Proposed near-term opportunities identified in the City's Non-motorized Transportation Plan:

- Bike lanes (First Tier Priority) along east and west sides of street.
- Narrower (10 ft) traffic lanes.

Existing Lane Configuration



Proposed Lane Configuration with Bike Lanes

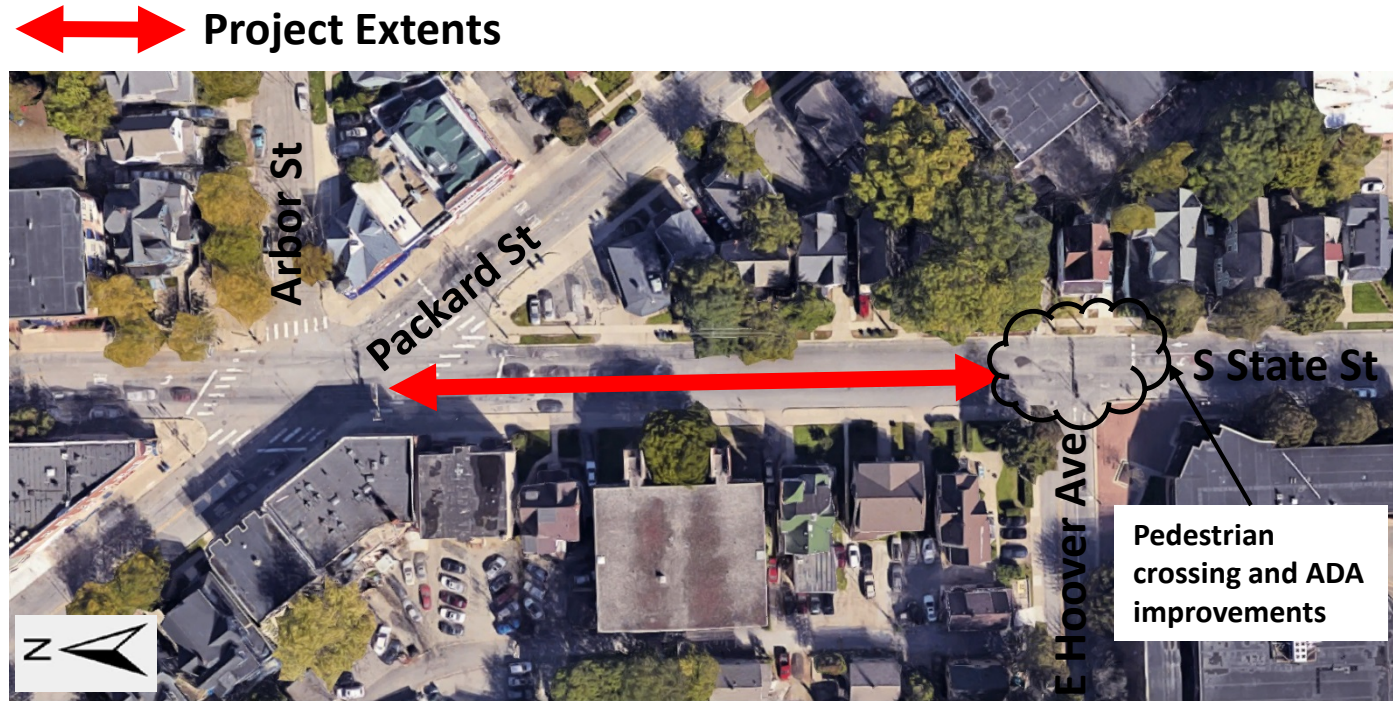


South State Street (E Hoover Ave to Packard St)

↔ Project Extents



South State Street (E Hoover Ave to Packard St)



Other opportunities identified during project planning:

- Pedestrian crossing and ADA improvements at the E Hoover Ave intersection.

Stone School Road (E Eisenhower Pkwy to Packard St)

↔ Project Extents



Stone School Road (E Eisenhower Pkwy to Packard St)



 **Work Activity Limits**

Proposed Work Activities: Mill and overlay to partially remove and replace the existing asphalt pavement; removal and replacement of concrete curb and gutter segments and driveway openings, as required; placement of new pavement markings; new and replacement traffic signing; and restoration of any lawn and turf areas disturbed by the construction activities.

Stone School Road (E Eisenhower Pkwy to Packard St)

Proposed near-term opportunities identified in the City's Non-motorized Transportation Plan:

- Reconfiguration of traffic lanes (4 to 3 lane conversion).
- Bike lanes (First Tier Priority) east and west side of roadway.

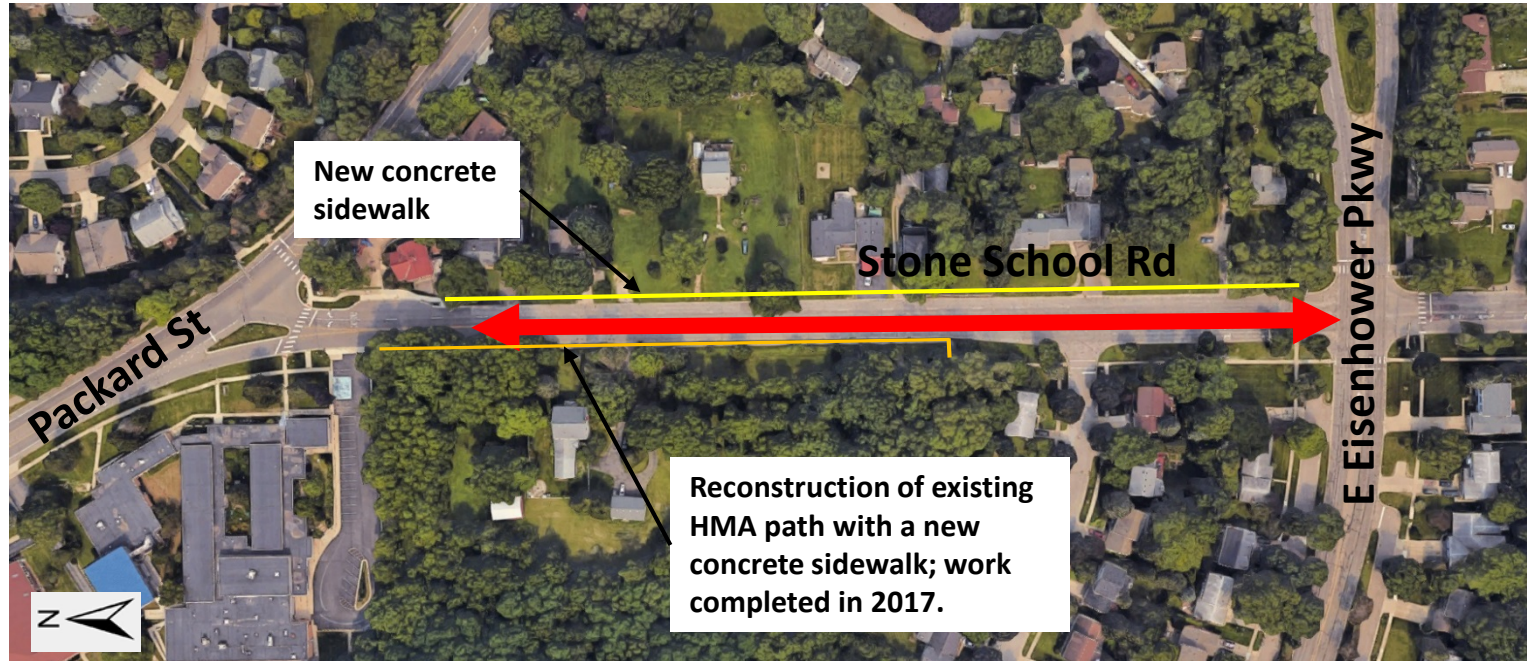
Existing Lane Configuration



Proposed Lane Configuration with Bike Lanes



Stone School Road (E Eisenhower Pkwy to Packard St)



 **Project Extents**

Additional identified near-term opportunities:

- Addition of sidewalk along the east side of the roadway.
- Reconstruction of existing HMA path along a portion of the west side of the roadway.

Jackson Avenue (Wagner Rd to City/MDOT Jurisdiction Limits)

↔ Project Extents



— Composite (asphalt over concrete) pavement

— Concrete pavement

— Asphalt pavement

Jackson Avenue (Wagner Rd to City/MDOT Jurisdiction Limits)



 **Project Extents**

Proposed Work Activities: Mill and overlay the existing asphalt pavement and composite pavements; perform concrete pavement repairs, as required; re-sawing and sealing concrete pavement joints; asphalt shoulder paving; aggregate shoulder work; placement of new pavement markings; new and replacement traffic signing; and restoration of any lawn and turf areas disturbed by the construction activities.

Jackson Avenue (Wagner Rd to City/MDOT Jurisdiction Limits)



Jackson Avenue (Wagner Rd to City/MDOT Jurisdiction Limits)



 **Project Extents**

Near-term opportunities identified in the City's Non-motorized Transportation Plan:

- Mid-block crossing easterly of project extents.
- Sidewalk along the south side (Wagner Rd to Parklake Ave).

Next Steps

- Finalize designs: January & February 2018.
- Prepare final specifications and cost estimates: February 2018.
- Prepare final bid package for advertisement: February 2018.
- Project bid letting: March 2018.
- Construction: May – October 2018

Questions?
