



What is Climate Change?

Climate change (*n*): a long-term shift in global or regional climate patterns

- The planet is warming up fast – faster than any time in history
- This warming disrupts our weather patterns and leads to impacts like very hot summers, more rain and flooding



Ann Arbor's Climate Trends, Projections, and Impacts



More Rainfall



Increasing
Temperatures



Migration

Climate Adaptation

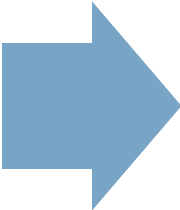
Prepare and Adapt

Climate Mitigation

Reduce Impacts



Equity



Climate Resilience =



Our City is Already Hard at Work

- Aggressive waste reduction and recycling programs
- Community Solarize program
- Miles of bike lanes
- Electric vehicles and charging infrastructure
- Complete streets initiative
- Energy upgrades and solar at municipal buildings
- Local tree planting initiative





A²ZERO

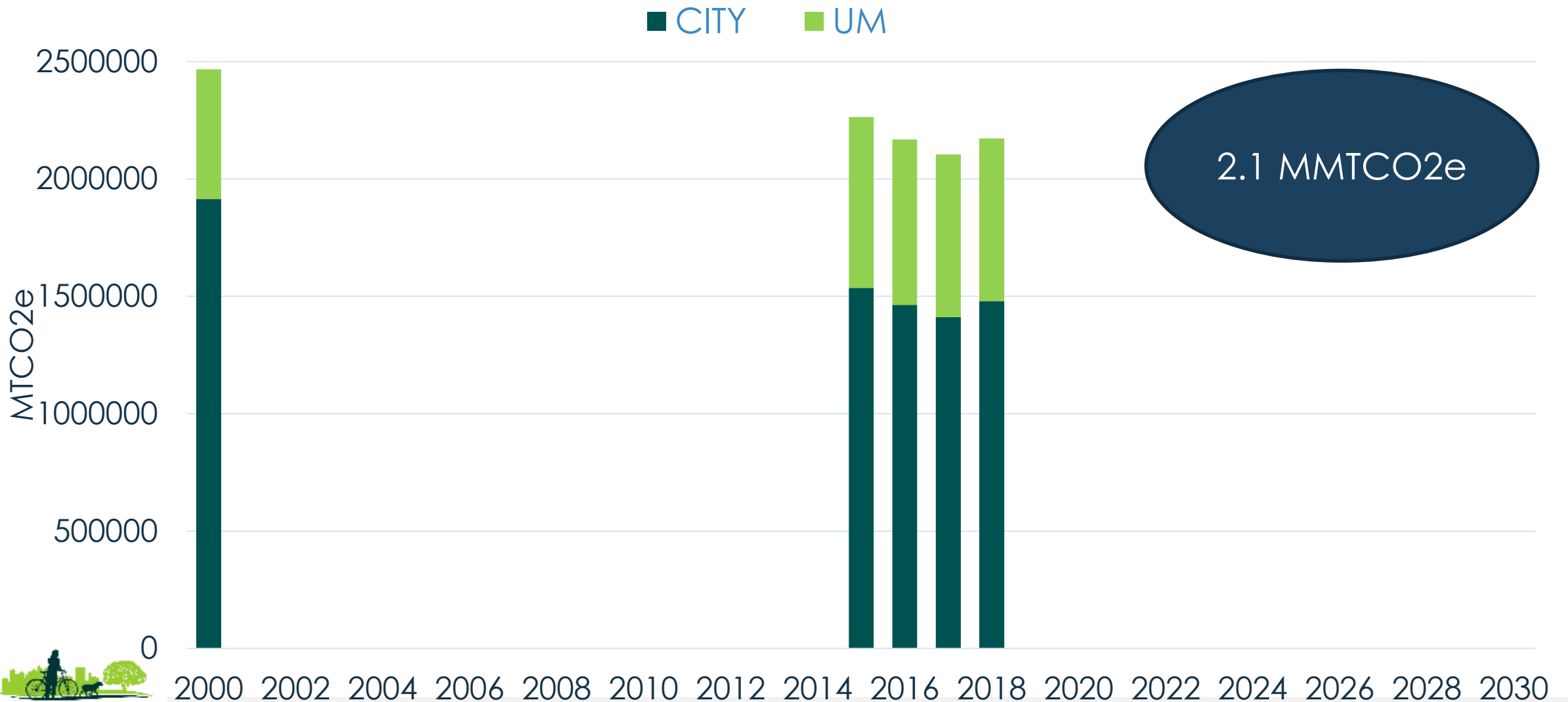
EQUITABLE • SUSTAINABLE • TRANSFORMATIVE

The Vision

Together, creating and implementing a just transition to carbon neutrality by the year 2030.



Carbon Neutrality Charge



Carbon Neutrality Charge

Equality



The assumption is that everyone benefits from the same supports. This is equal treatment.

Equity



Everyone gets the supports they need (this is the concept of "affirmative action"), thus producing equity.

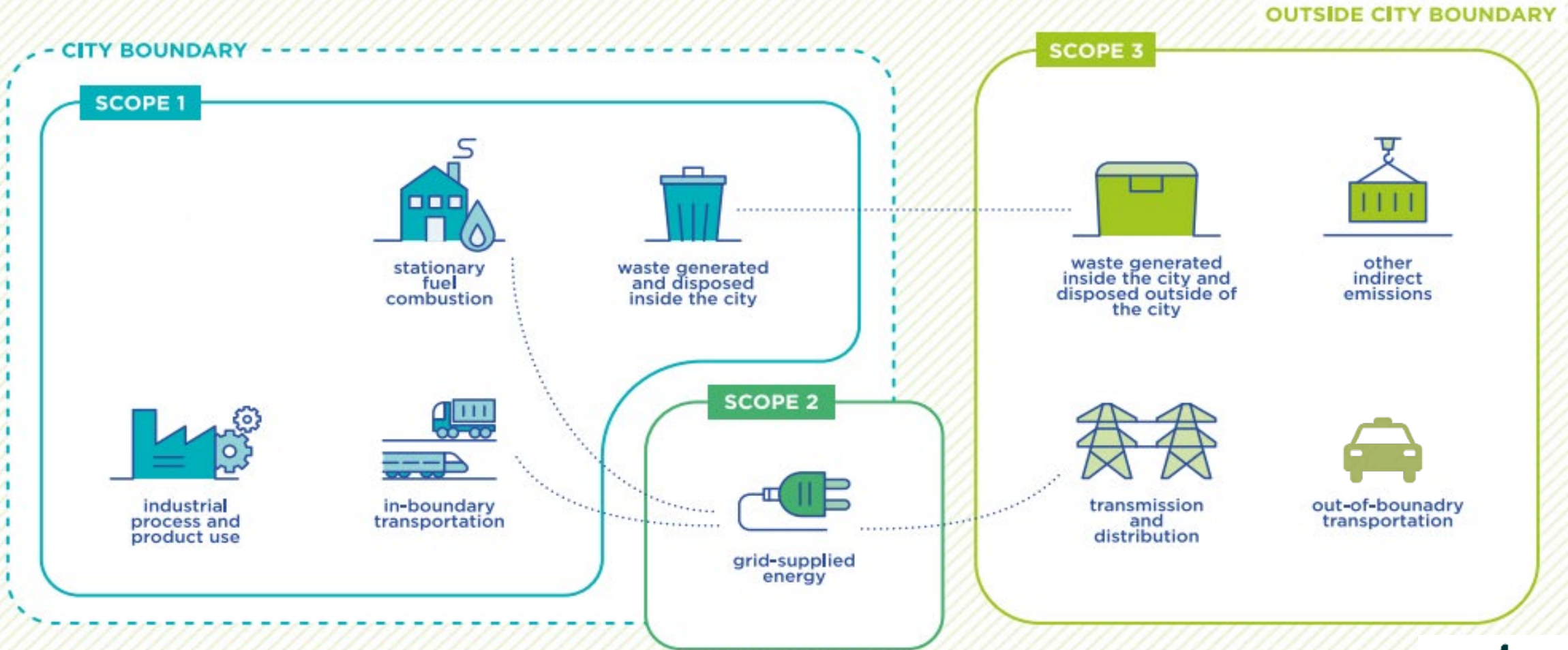
Justice



All 3 can see the game without supports or accommodations because **the cause(s) of the inequity was addressed.** The systemic barrier has been removed.



Carbon Neutrality Charge



Four Plan Elements

Energy



Mobility



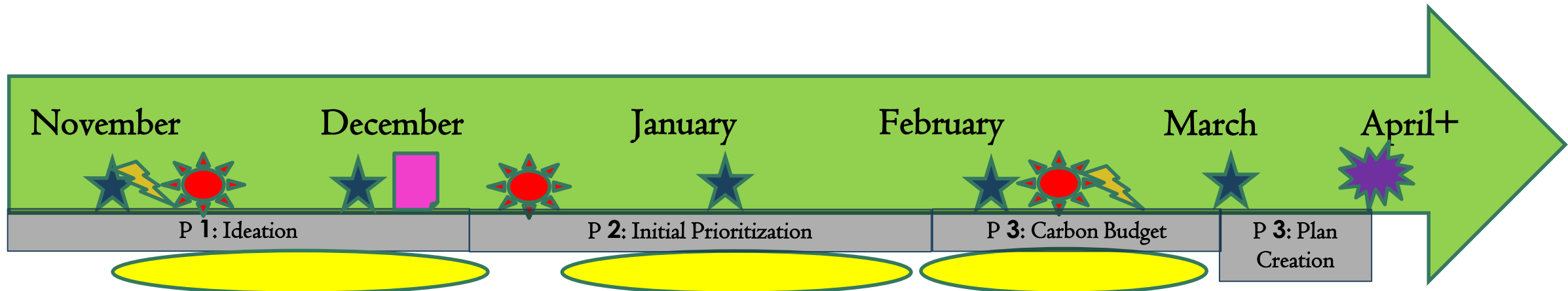
Resource
Reduction



Adaptation &
Resilience



A²Zero Timeline & Work Products



- TAC Meetings
- Town Hall Meeting
- Partner Meeting

- Quantification RFP Released
- Online and Paper Surveys
- Plan to Council

50-60 public events

Some Initial Transportation-Related Ideas

- Increase density to encourage walking, biking, and public transit use
- Increase mixed-use zoning: allow neighborhood amenities such as grocery stores, bakeries, coffee shops, and restaurants
- More protected bike lanes
- Free public transit – expanded public transit service lines and hours
- On street rail or dedicated in-City bus rapid transit
- More park and rides connected to transit
- Expanded electric vehicle charging stations (powered with renewables)
- Electric buses
- New train station to support expanded Amtrak and Commuter Rail
- Car free days and/or car free zones
- Community electric vehicle bulk buy
- Parking maximums (not minimums)
- Create pedestrian only corridors

Discussion Questions

- What ideas do you have for how we reduce mobility-related emissions?
- Who else should we be engaging in our process?
- What other actions should we consider in our other areas of work (i.e., energy, resource reduction, and adaptation & resilience)?

Be Part of the Solution

How to Get Involved Today

Together, we can successfully develop a plan to make Ann Arbor stronger. We invite you to participate in this new initiative by sharing your ideas, talking with friends and family, attending events, and engaging in our online tools. Stay up-to-date by following us on social media and checking the A²Zero website frequently.



Take surveys



Attend community events



Talk to your family, friends, and colleagues

Contact Us



Facebook: [TheCityOfAnnArbor](#)

Twitter: [@a2gov](#)

Website: www.a2zero.org

Questions? Contact ghardy@a2gov.org

Thank You



[Home](#) [About](#) [Get Involved](#) [Events](#) [Contact Us](#)

A²ZERO

Equitable. Sustainable. Transformative.

Together, creating and implementing a just transition to carbon neutrality by the year 2030.

The City of Ann Arbor, in partnership with our community and over 50 partners, is embarking on a quest to achieve a just transition to carbon neutrality, community-wide, by the year 2030. This incredibly ambitious goal will only be achieved when we all work together to reduce our collective footprint and enhance our overall resilience.

A²ZERO is how we'll get there, together.