

Davis Townhomes

303-307 West Davis Street, Ann Arbor, Michigan 48103

DRAWING INDEX ■ INDICATES DRAWINGS IN THIS SET

- T-1 SITE PHOTOS AND TITLE PAGE
- C-1 SURVEY
- C-2 SITE PLAN
- A-2. BASEMENT PLAN TYPE A UNIT
- A-3 1ST FLOOR PLAN TYPE A UNIT
- A-4 2ND FLOOR PLAN TYPE A UNIT
- A-5 ATTIC PLAN TYPE A UNIT
- A-6 BASEMENT PLAN TYPE B UNIT
- A-7 1ST FLOOR PLAN TYPE B UNIT
- A-8 2ND FLOOR PLAN TYPE B UNIT
- A-9 ATTIC PLAN TYPE B UNIT



photo above:
Storage Warehouse to east at 211 W.
Davis

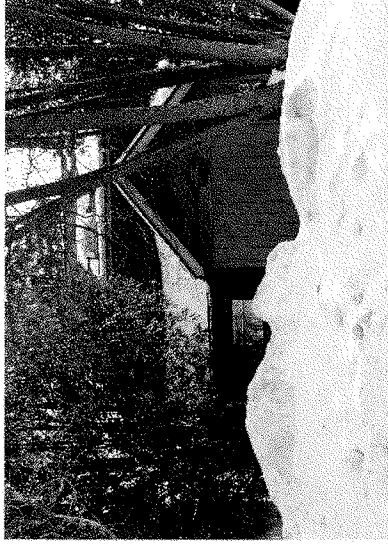


photo above:
House to be removed at 303 W. Davis

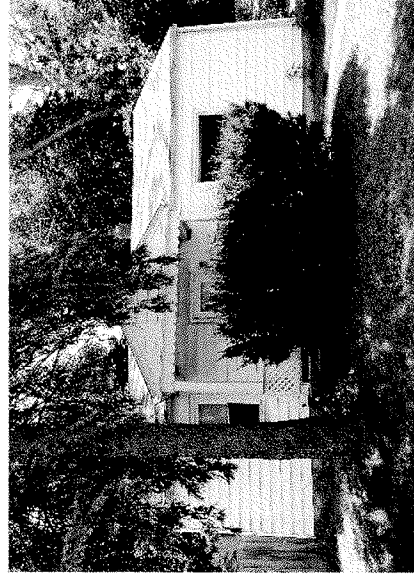


photo above:
House to be removed at 307 W. Davis



photo above:
House to west at 311 W. Davis

Site Photos

No Scale

■ RUETER ASSOCIATES
ARCHITECTS

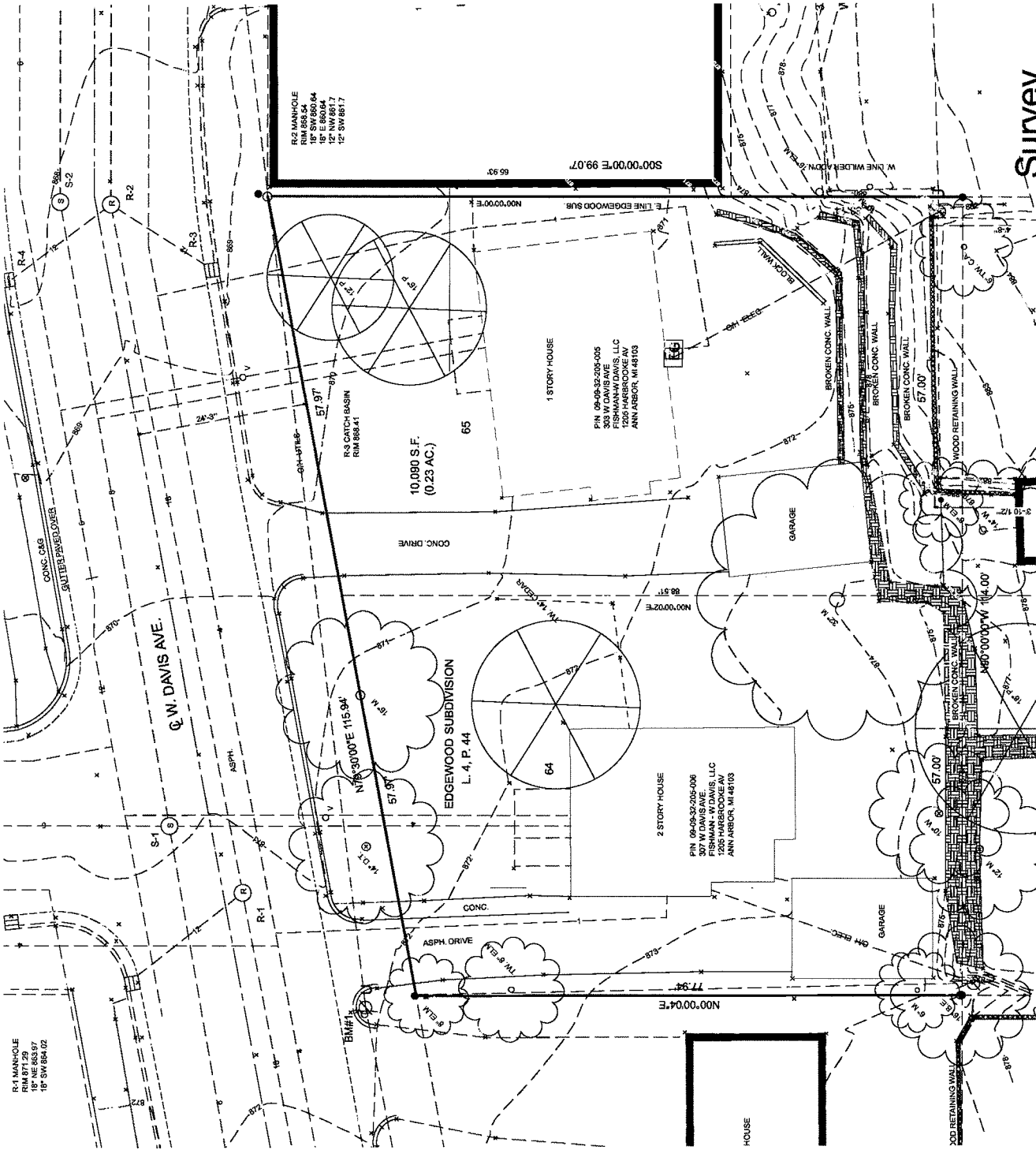
515 Fifth Street, Ann Arbor, Michigan 48103
phone: (734) 769-0070, fax: (734) 769-0167

303-307 DAVIS STREET

07. 22. 15

Ann Arbor MI

T1



Survey

Scale : 1" = 40' 0"

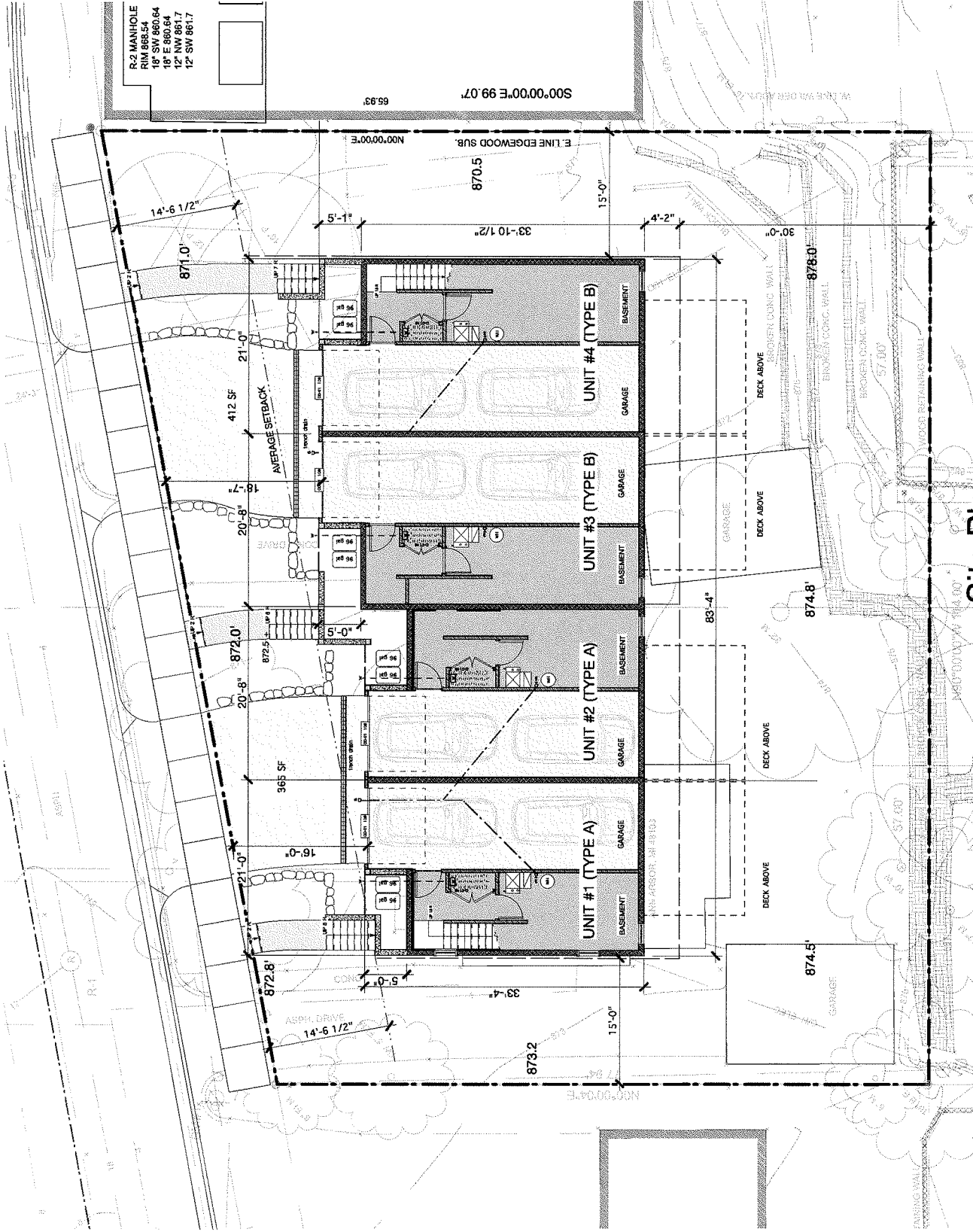
C1

303-307 DAVIS STREET 07.22.15

Ann Arbor MI

RUETER ASSOCIATES
ARCHITECTS

515 Fifth Street, Ann Arbor, Michigan 48103
phone: (734) 769-0070, fax: (734) 769-0167



R-2 MANHOLE
 RIM PER SA
 18" SW 860.64
 18" E 860.64
 12" NW 861.7
 12" SW 861.7

Site Plan

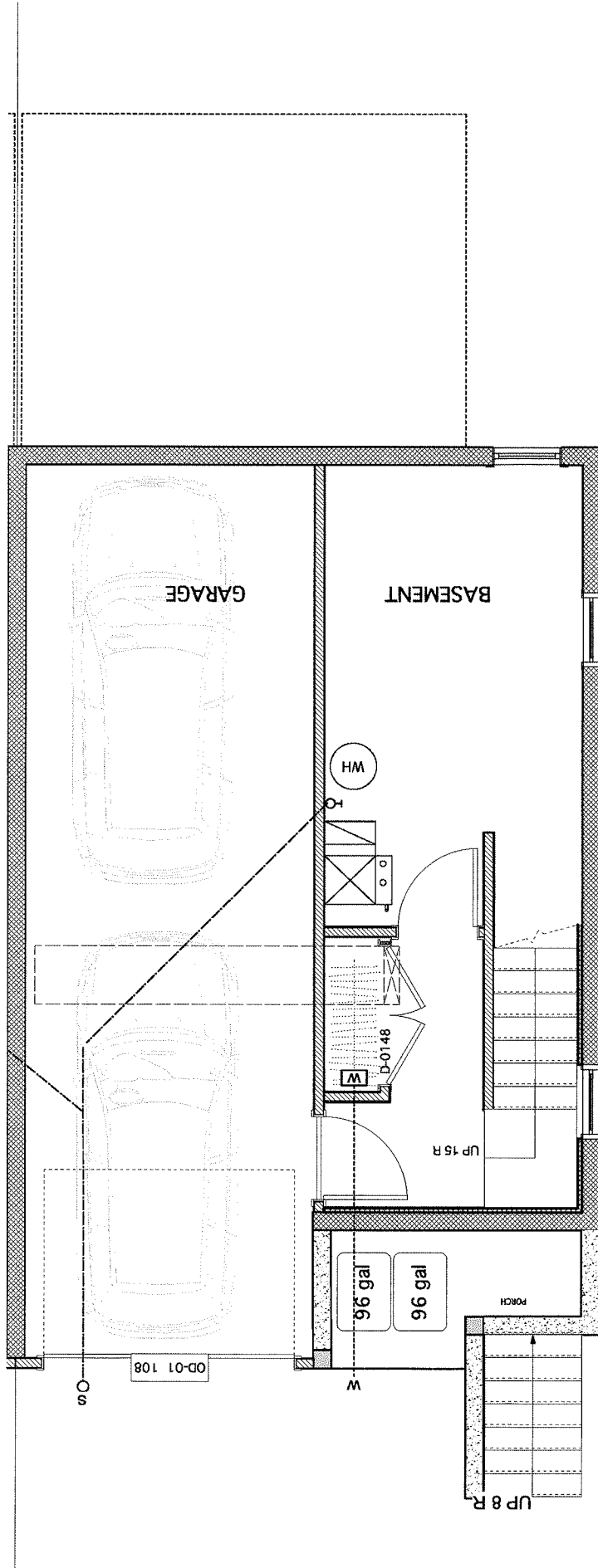
Scale : 1/16" = 1' 0"

303-307 DAVIS STREET 07.22.15

■ RUETER ASSOCIATES
 ARCHITECTS

515 Fifth Street, Ann Arbor, Michigan 48103
 phone: (734) 769-0070, fax: (734) 769-0167

C2



1ST: 670 SF
 2ND: 706 SF
 3RD: 458 SF
 TOT: 1833 (DOES NOT INCL BSMT ENTRY)

Basement Floor Plan Type A Unit

Scale : 3/16" = 1' 0"

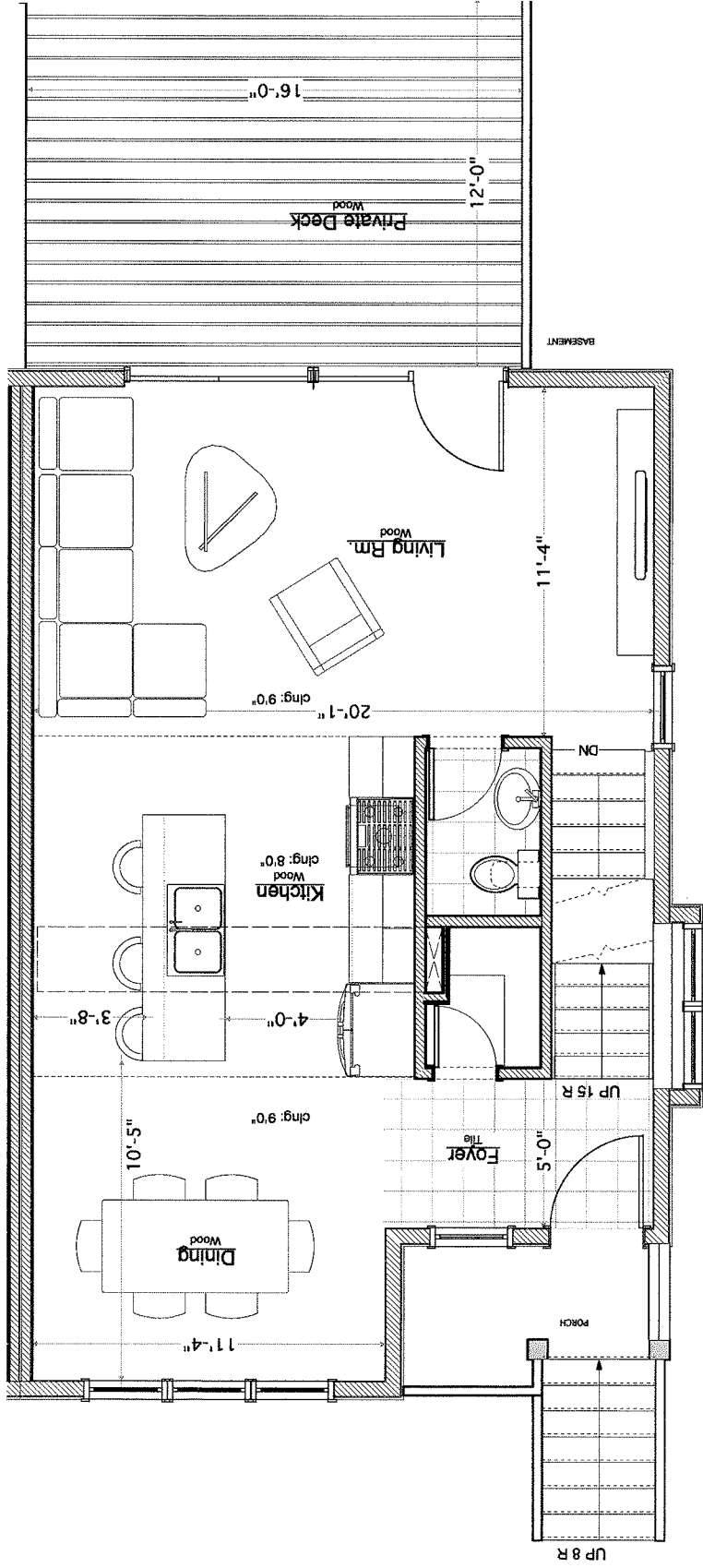
A1

303-307 DAVIS STREET 07.22.15

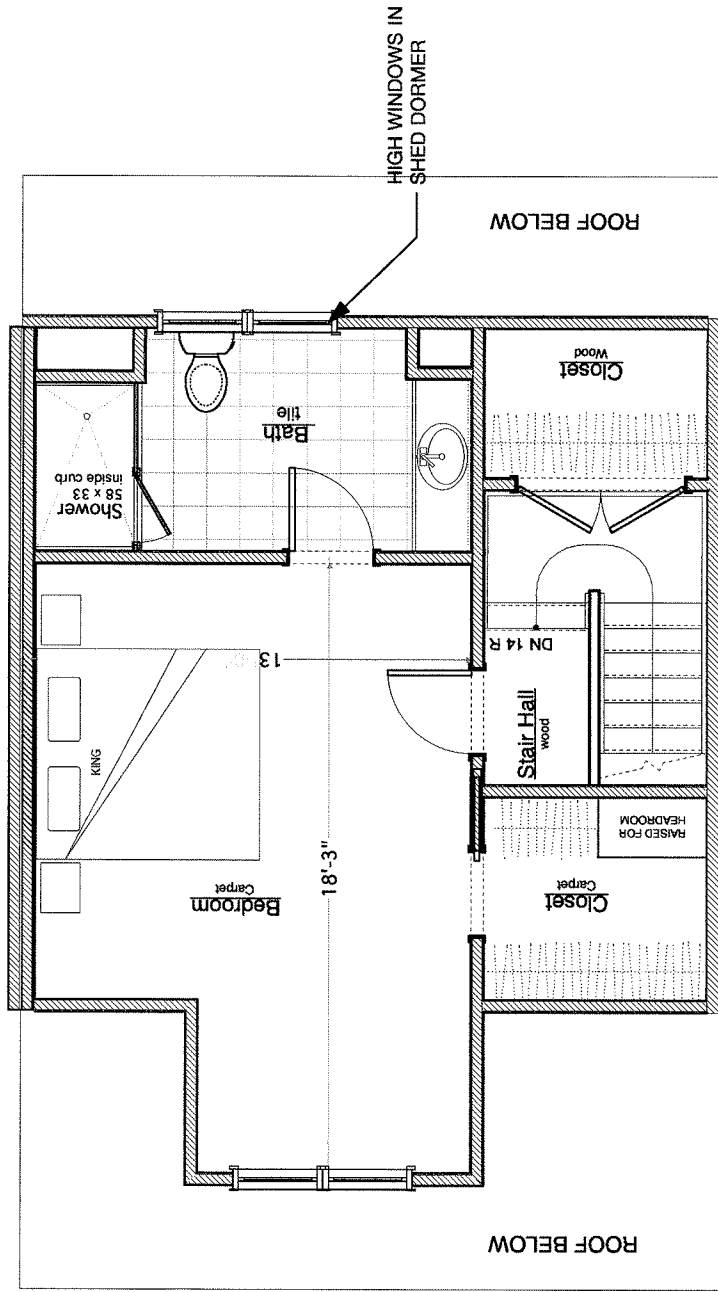
RUETER ASSOCIATES ARCHITECTS

515 Fifth Street, Ann Arbor, Michigan 48103
 phone: (734) 769-0070, fax: (734) 769-0167

Ann Arbor MI



First Floor Plan Type A Unit AREA: 670 SF
 Scale : 3/16" = 1' 0"



Attic Floor Plan Type A Unit

Scale : 3/16" = 1'0" AREA: 458 SF"

■ RÜETTER ASSOCIATES
ARCHITECTS
515 Fifth Street, Ann Arbor, Michigan 48103
phone: (734) 769-0070, fax: (734) 769-0167

303-307 DAVIS STREET

Ann Arbor MI

07.22.15

A4