

**EXHIBIT A**

UHAUL EASEMENT

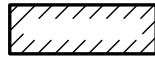
PROPOSED WATER MAIN EASEMENT LOCATED IN THE SW 1/4 OF SECTION 9, T3S, R6E, CITY OF ANN ARBOR, WASHTENAW COUNTY, MICHIGAN



WEST 1/4 COR. SECTION 9, T3S, R6E



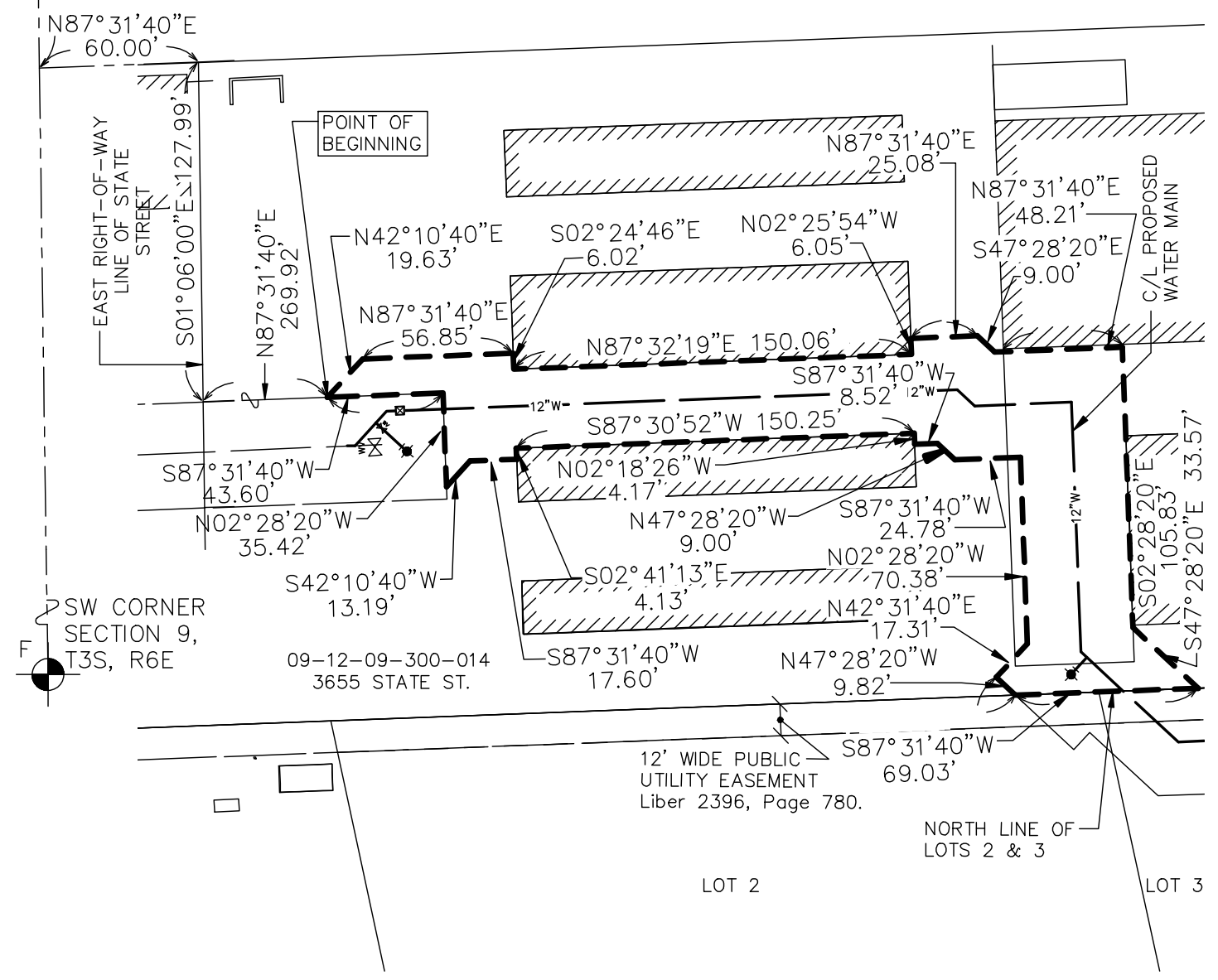
**LEGEND**



EXIST. OR PROP. BUILDING



SECTION CORNER



CLIENT: TWENTY-FIVE SAC SELF-STORAGE CORP.	DATE: 08/13/14
JOB NO.: <b>13182</b>	SHEET 1 OF 2
SECTION: 9 TWN: 3S. RANGE: 6E.	SCALE: 1in.= 60 ft.
CITY OF ANN ARBOR,	BOOK: #
WASHTENAW COUNTY, MICHIGAN	BY: M.V.V.
<p><b>MIDWESTERN CONSULTING</b></p>	
<p>Civil, Environmental and Transportation Engineers Planners, Surveyors Landscape Architects</p> <p>3815 Plaza Drive Ann Arbor, Michigan 48108 Phone: 734.995.0200 Fax 734.995.0599</p>	