

BROADWAY PARK

841 BROADWAY STREET
ANN ARBOR, MI 48104

Applicant:
THE ROXBURY GROUP
ON BEHALF OF:
LOWER TOWN
PARTNERS, LLC

SMITHGROUP

201 DEPOT STREET
SECOND FLOOR
ANN ARBOR, MI 48104
734.662.4457
www.smithgroupjpr.com

HAMILTON ANDERSON
1435 RANDOLPH STREET, STE 200
DETROIT, MI 48226

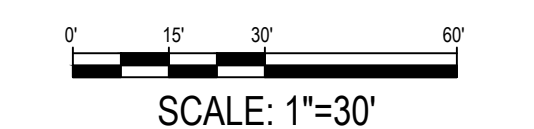
ISSUED FOR	REV	DATE
AMTRAK REVIEW	H	13 SEP 19
REVISED CONCEPTUAL PUD PLAN	G	07 AUG 19
REVISED CONCEPTUAL PUD PLAN	F	28 FEB 19
REVISED CONCEPTUAL PUD PLAN	E	18 DEC 18
CONCEPTUAL PUD RESPONSE	D	27 NOV 18
CONCEPTUAL PUD PLAN	C	19 OCT 18
PC PRE-APPLICATION MEETING	B	08 OCT 18
REZONING / AREA PLAN	A	23 AUG 18

SEALS AND SIGNATURES

NOT FOR CONSTRUCTION

KEY PLAN

DRAWING TITLE
**SECONDARY ACCESS
REMOVAL AND LAYOUT
PLAN**



SCALE 10420

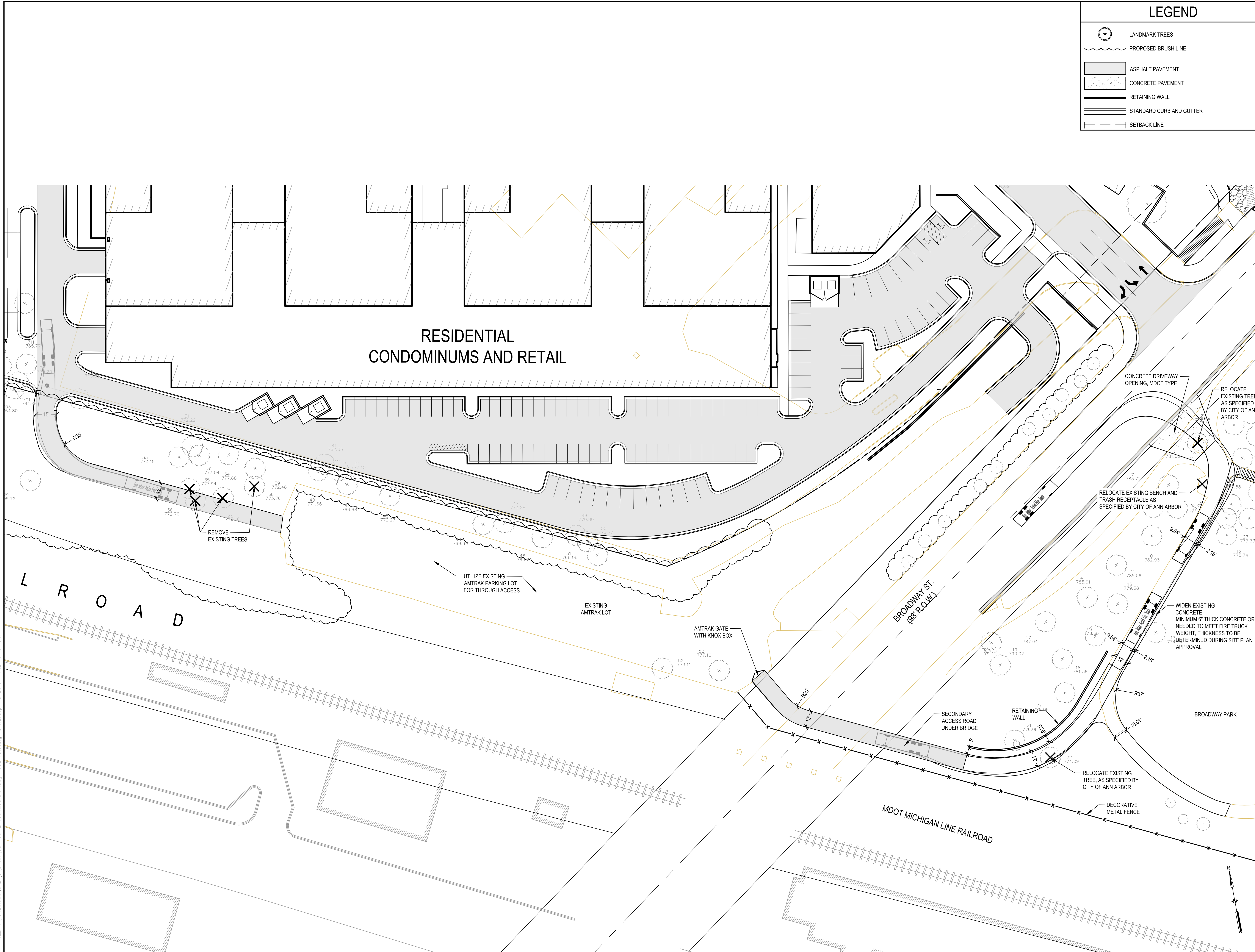
PROJECT NUMBER

CS103A

DRAWING NUMBER

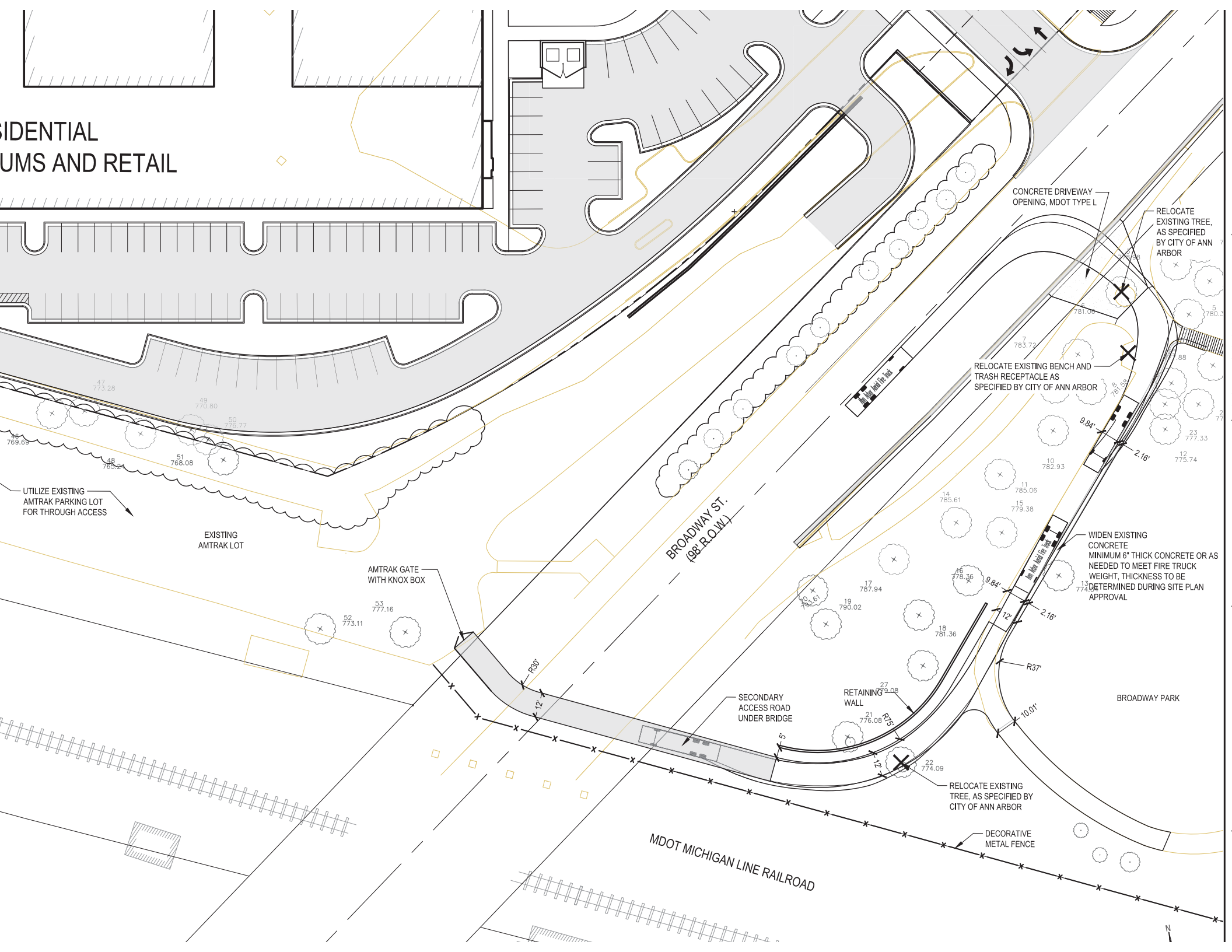
LEGEND

	LANDMARK TREES
	PROPOSED BRUSH LINE
	ASPHALT PAVEMENT
	CONCRETE PAVEMENT
	RETAINING WALL
	STANDARD CURB AND GUTTER
	SETBACK LINE



FILE: P:\10420\000\CAD\C_Sheet\CS-103-LAYOUT_Plan.dwg USER: hrcabig DATE: Sep. 18. 2019 TIME: 01:01 pm

RESIDENTIAL
MUSEUMS AND RETAIL



BROADWAY PARK

841 BROADWAY STREET
ANN ARBOR, MI 48104

Applicant:
THE ROXBURY GROUP
ON BEHALF OF:
LOWER TOWN PARTNERS, LLC

SMITHGROUP

201 DEPOT STREET
SECOND FLOOR
ANN ARBOR, MI 48104
734.662.4457
www.smithgroupjr.com

HAMILTON ANDERSON
1435 RANDOLPH STREET, STE 200
DETROIT, MI 48226

ISSUED FOR: _____ REV: _____ DATE: _____

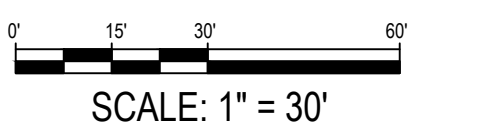
AMTRAK REVIEW	H	13 SEP 19
REVISED CONCEPTUAL PUD PLAN	G	07 AUG 19
REVISED CONCEPTUAL PUD PLAN	F	28 FEB 19
REVISED CONCEPTUAL PUD PLAN	E	18 DEC 18
CONCEPTUAL PUD RESPONSE	D	27 NOV 18
CONCEPTUAL PUD PLAN	C	19 OCT 18
PC PRE-APPLICATION MEETING	B	08 OCT 18
REZONING / AREA PLAN	A	23 AUG 18

SEALS AND SIGNATURES

NOT FOR CONSTRUCTION

KEY PLAN

DRAWING TITLE
SECONDARY ACCESS GRADING PLAN



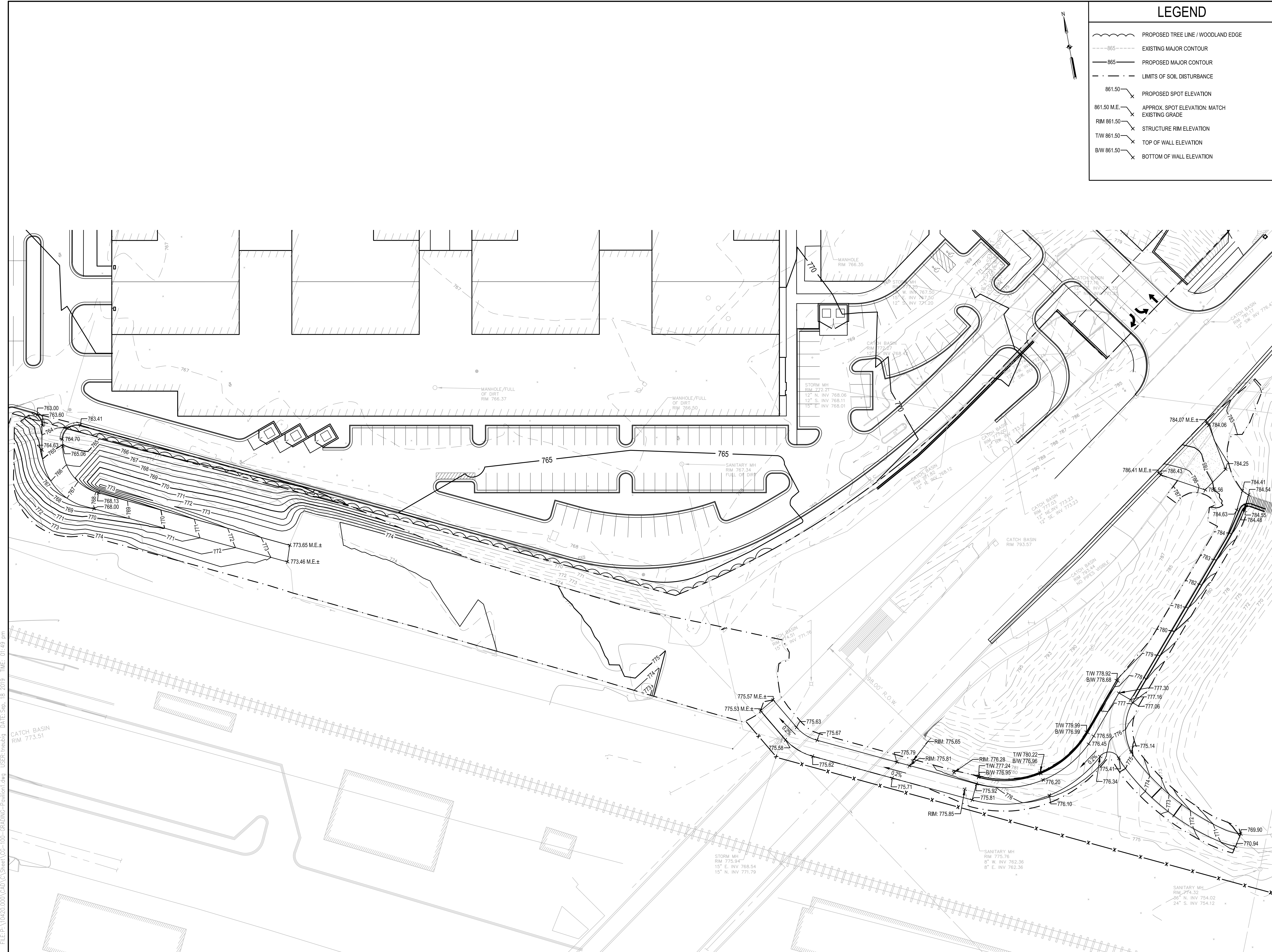
SCALE: 1" = 30' PROJECT NUMBER: 10420

DRAWING NUMBER: **CG100A**

DRAWING NUMBER

LEGEND

	PROPOSED TREE LINE / WOODLAND EDGE
	EXISTING MAJOR CONTOUR
	PROPOSED MAJOR CONTOUR
	LIMITS OF SOIL DISTURBANCE
	PROPOSED SPOT ELEVATION
	APPROX. SPOT ELEVATION: MATCH EXISTING GRADE
	STRUCTURE RIM ELEVATION
	TOP OF WALL ELEVATION
	BOTTOM OF WALL ELEVATION



FILE: P:\10420\CG100A\CG100A-CRADING-Proposed.dwg USER: treabig DATE: Sep, 18 2019 TIME: 01:49 am