

Photo of Existing Condition
(one awning over each of 6 windows)

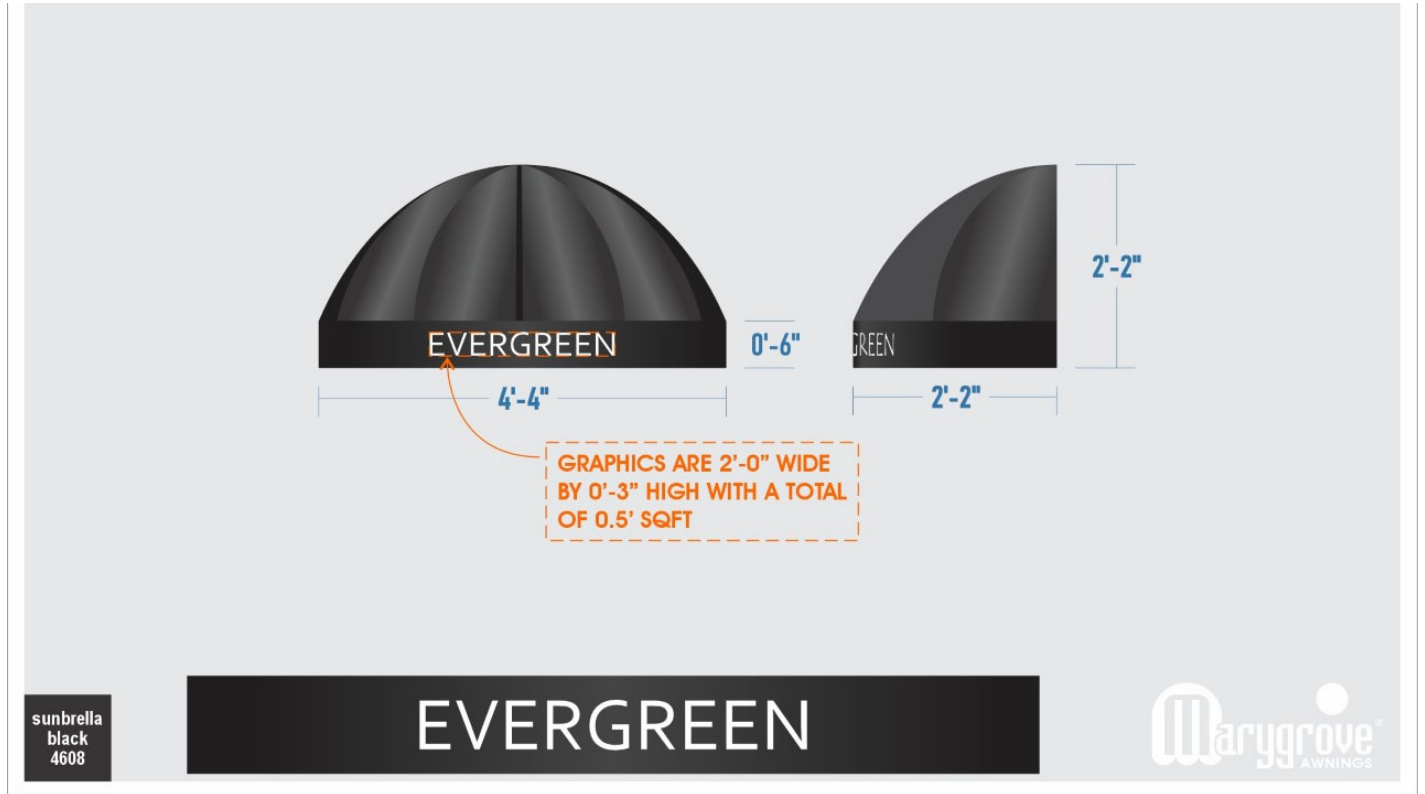


(existing sign will be removed)

Proposed Awning Design



Sign Area Layout



DESIGN CRITERIA:
 THE AWNING SUPPORTS
 ARE DESIGNED FOR 115 MPH,
 3 SEC. GUST ULTIMATE WIND SPEED
 WIND UPLIFT @ 22 PSF & 30 PSF
 GROUND SNOW LOADS FOR
 EXPOSURE B, RISK CATEGORY II
 AS PER 2019 - MBC AND ASCE 7-10

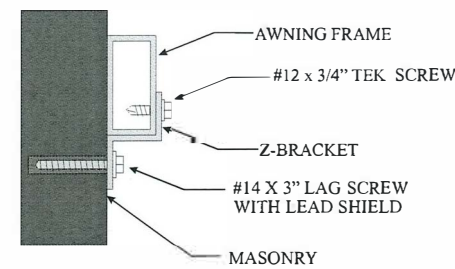
ALL MOUNTING HARDWARE SHALL
 BE NON-CORROSIVE

ALL WELDING SHOULD BE
 USING E70 ELECTRODES
 AS PER AWS D 1.1 & D 1.2

ALL ALUMINUM SECTIONS SHALL
 BE 6063-T6 ALLOY

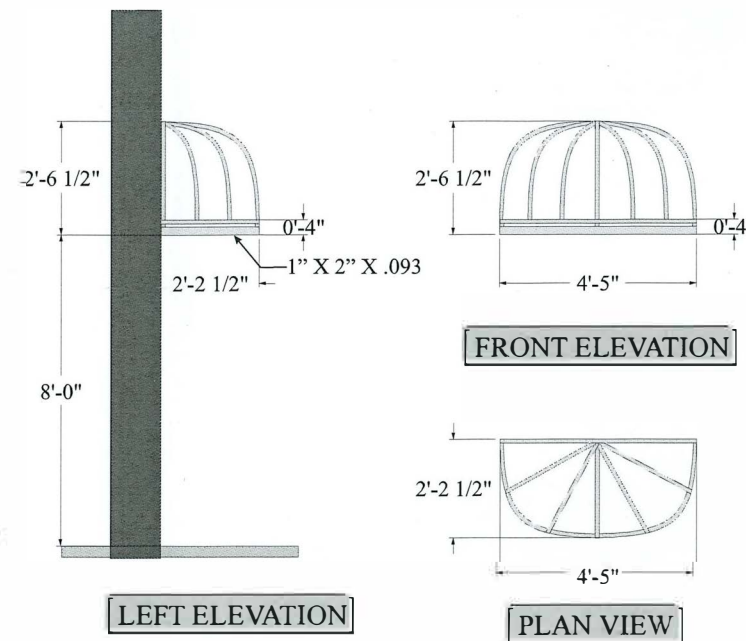
A PROTECTIVE BARRIER SHALL BE
 PROVIDED BETWEEN ALL STEEL AND
 ALUMINUM TO PREVENT CORROSION

THIS PROJECT SHALL ADHERE TO THE
 FOLLOWING CODES:
 2015 MICHIGAN BUILDING CODE
 2015 INTERNATIONAL FIRE PREVENTION CODE
 2009 ANSI ACCESSIBILITY CODE



**AWNING
 ATTACHMENT
 DETAIL**

(FASTENERS WILL BE PLACED
 INTO MORTAR JOINTS ONLY)



Marygrove
 AWNINGS
 DALE BACHE
 EVERGREEN DOWNTOWN
 208 WEST LIBERTY
 ANN ARBOR, MI 48104
 5/27/22

NOTES:
 ALL FRAMING ALUMINUM
 1" X 1" X .093 UNLESS NOTED
 FRAMES: MILL FINISH
 FABRIC: SUNBRELLA BLACK 6008



Handwritten signature and initials

12609 Alameda Drive
 Strongsville, Ohio 44149
 440.846.9500
 Toll Free 800.228.1805
 Fax 440.846.8446
 info@icimetals.com
www.icimetals.com

Custom
 Extrusions

Precision
 Bar Sawing

Precision
 Aluminum
 Plate Sawing

Shearing

Custom
 Inventory
 Management

**Ask about our
 rebate program!**



Aluminum Extrusions for the Awning Industry







ICI Staple System

	1" x 1" x .100" wall 6063-T5	Round Corner	24'
Item # ICICAS101			
	1" x 2" x .100" wall 6063-T5	Round Corner	24'
Item # ICICAS102			
	1" x 1" x .100" wall 6063-T5	Round Corner	24'
Item # ICICAS103			
	1" x 2" x .100" wall 6063-T5 OP-Side Staple	Round Corner	24'
Item # ICI CAS104			

Custom Awning Shapes

	Stationary Molding Track 2.75" x .100" wall 6061-T6		20'1"
Item # ICIAM101			
	90 Degree Awning Molding 1.18" - 90 Degree 6063-T5		18'
Item # ICIAM102			

Awning Hardware Parts

	1" Z Bracket
Item # AwnHW01	
	U Bracket
Item # AwnHW02	
	1" x 2" L-Bracket
Item # AwnHW03	
	1" x 1" x 1.5" L-Bracket
Item # AwnHW04	
	x 4" Z Bracket
Item # AwnHW05	
	1" x 2" Flat Link Plate
Item # AwnHW06	

12609 Alameda Drive
Strongsville, Ohio 44149
440.846.9500
Toll Free 800.228.1805
Fax 440.846.8446
info@icimetals.com
www.icimetals.com

Custom
Extrusions

Precision
Bar Sawing

Precision
Aluminum
Plate Sawing

Shearing

Custom
Inventory
Management

**Don't see the size
you need here?**

**Just call
for a quote!**



Aluminum Extrusions for the Awning Industry



Rectangular Aluminum Tubing

3/4" x 3/4" x .062" wall	6063-T52 Extruded Tubing	Sharp Corner	12' & 24'
1" x 1" x .065" wall	6063-T6 Extruded Tubing	Round Corner	24'
1" x 1" x .090" wall	6063-T6 Extruded Tubing	Round Corner	24'
1" x 1" x .120" wall	6063-T6 Extruded Tubing	Round Corner	24'
1" x 2" x .093" wall	6063-T6 Extruded Tubing	Round Corner	24'
1" x 2" x .125" wall	6063-T6 Extruded Tubing	Round Corner	20' & 24'
1" x 2" x .125" wall	6063-T52 Extruded Tubing	Sharp Corner	24'
1" x 4" x .125" wall	6063-T5 Extruded Tubing	Sharp Corner	24'
1-1/2" x 1-1/2" x .125" wall	6063-T52 Extruded Tubing	Sharp Corner	24'
2" x 2" x .125" wall	6063-T6 Extruded Tubing	Round Corner	24'
2" x 2" x .125" wall	6063-T52 Extruded Tubing	Sharp Corner	24'
2" x 4" x .120" wall	6061-T6 Extruded Tubing	Round Corner	24'8"
2" x 4" x .120" wall	6063-T52 Extruded Tubing	Sharp Corner	24'
2" x 4" x .125" wall	6063-T52 Extruded Tubing	Sharp Corner	24'
3" x 3" x .125" wall	6063-T52 Extruded Tubing	Sharp Corner	24'
4" x 4" x .125" wall	6063-T52 Extruded Tubing	Sharp Corner	24'

Round Aluminum Tubing

2"OD x .125" wall	6061-T6511 Extruded Tubing	24'
-------------------	----------------------------	-----

Schedule 40 Aluminum Pipe

1" (1.315" OD x .133" wall)	6063-T6 Extruded Pipe	20'
1-1/2" (1.90" OD x .145" wall)	6063-T5 Extruded Pipe	20'
2" (2.375" OD x .154" wall)	6061-T6 Extruded Pipe	20'2"

Round Aluminum Bar

1/2" Diameter	6061-T6511 Extruded Bar	12' & 24'
5/8" Diameter	6061-T6511 Extruded Bar	12'

Flat Aluminum Bar

3/16" x 5" Flat	6061-T6511 Extruded Bar	12'
1/4" x 2" Flat	6061-T6511 Extruded Bar	12'
1/4" x 4" Flat	6061-T6511 Extruded Bar	12'

Galvanized Steel Products

Rectangular Gatorshield Tubing

1" x 2" x .049" wall (18GA)	Gatorshield	20' - 24'
-----------------------------	-------------	-----------

Square Gatorshield Tubing

1" x 1" x .049" wall (18GA)	Gatorshield	20' - 24'
1" x 1" x .0625" wall (16GA)	Gatorshield	20' - 24'

Round Gatorshield Tubing

1.315" OD x .083" wall (14GA)	Gatorshield	20' - 24'
1.315" OD x .049" wall (18GA)	Gatorshield	20' - 24'
1.66" OD x .083" wall (14GA)	Gatorshield	20' - 24'

Round Galvanized Bar

1/2" Diameter	Galvanized Dipped A36 Carbon Steel	20'
---------------	------------------------------------	-----