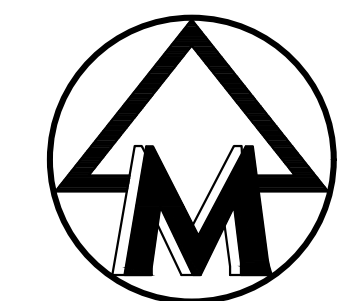
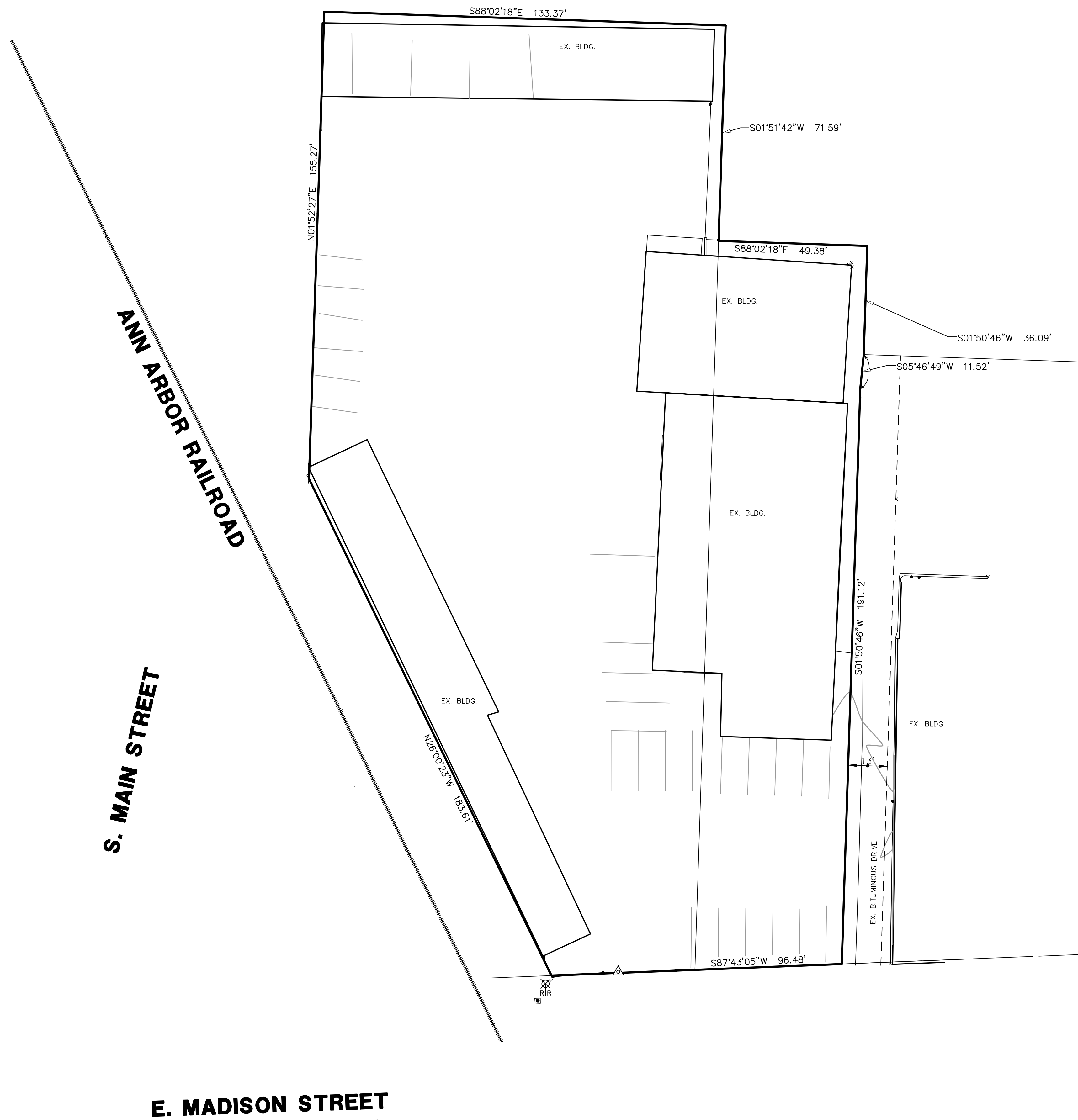


M:\Civ\132_Pro\17162\Survey\17162_S01.dwg, 10/29/2019 8:20 AM, Jonathan M. Kravits, None
 Copyright © 2017, Midwestern Consulting L.L.C. All rights reserved. No part of this drawing may be used or reproduced in any form or by any means, or stored in a database or retrieval system, without prior permission of Midwestern Consulting L.L.C.



SCALE: 1" = 20'
 0 20 40 60

LEGEND

— 8.38 —	EXIST. CONTOUR
× 836.2	EXIST. SPOT ELEVATION
— o — U.P.	EXIST. UTILITY POLE
— GUY WIRE	GUY WIRE
— [] —	ELEC. TRANSFORMER
— O.H. —	EXIST. OVERHEAD UTILITY LINE
— * —	EXIST. LIGHT POLE
— ◀ —	EXIST. LIGHT ON ROOF
— t —	EXIST. TELEPHONE LINE
— e —	EXIST. ELECTRIC LINE
— g —	EXIST. GAS LINE
— f.o. —	EXIST. FIBER OPTIC LINE
— w —	EXIST. WATER MAIN
— H —	EXIST. HYDRANT
— [] —	EXIST. GATE VALVE IN BOX
— [] —	EXIST. GATE VALVE IN WELL
— r —	EXIST. STORM SEWER
— [] —	EXIST. CATCH BASIN OR INLET
— s —	EXIST. SANITARY SEWER
— [] —	SIGN
— [] —	RAILROAD CROSSING SIGN
— [] —	MAILBOX
— [] —	TELEPHONE RISER
— [] —	CABLE TELEVISION RISER
— [] —	ELECTRIC METER
— [] —	GAS METER
— [] —	TRAFFIC SIGNAL CONTROL BOX
— [] —	POST
— [] —	FENCE
— [] —	SINGLE TREE
— [] —	EXIST. DOWNSPOUT
— [] —	FOUND IRON ROD
— [] —	CONTROL PT.

BENCHMARK:

- 1.) SET SPK IN N. SIDE OF UTILITY POLE, 67' NORTH OF CENTERLINE OF R.R. TRACKS ON WEST SIDE OF S. MAIN STREET. ELEVATION=817.04 NAVD 88.
- 2.) SET SPK IN W. SIDE OF UTILITY POLE, AT EAST SIDE OF SOUTH ENTRANCE DRIVE TO MADISON AVE. ELEVATION=815.62 NAVD 88.
- 3.) SET SPK. IN SE. SIDE OF UTILITY POLE, ON NORTH SIDE OF DRIVEWAY, NORTH OF NW PROPERTY CORNER. ELEVATION=814.76 NAVD 88.

NOTES:

- 1.) ENTIRE SITE LIES WITHIN THE 100 YEAR FLOODPLAIN. FEMA MAP 26161C0263E DATED 4/03/12 SHOWS 100 YEAR FLOODPLAIN ELEVATION AT E. MADISON TO BE 818.0 AND AT THE NORTH END OF SITE TO BE 816.0.
- 2.) BEARINGS BASED ON STATE PLANE COORDINATES AS DETERMINED FROM GLOBAL POSITIONING SYSTEM (GPS).

MIDWESTERN CONSULTING
 3815 Plaza Drive Ann Arbor, Michigan 48108
 (734) 995-0200 • www.midwesternconsulting.com
 Land Development • Land Survey • Institutional • Municipal
 Wireless Communications • Transportation • Landfill Services



CLIENT
 QUINN EVANS ARCHITECTS—DETROIT
 71 GARFIELD, SUITE 160—B,
 DETROIT, MI 48201

FINGERLE MILL
 BOUNDARY & TOPOGRAPHIC SURVEY OF LAND LOCATED
 IN THE SE 1/4 OF SECTION 29, T2S, R6E,
 CITY OF ANN ARBOR, WASHTENAW COUNTY, MICHIGAN

1

JOB No. 17162	DATE: 7/11/17
REVISIONS:	SHEET 1 OF 1
	CADD:
	ENG:
	PM: BW
	TECH: KMW
	17162-SV01-FBF

The underground utilities shown have been located from field survey information and existing records. The surveyor makes no guarantees that the underground utilities shown comprise all such utilities in the area, either in-service or abandoned. The surveyor further does not warrant that the underground utilities shown are in the exact location indicated. Although the surveyor does certify that they are located as accurately as possible from the information available.