

Hess, Raymond

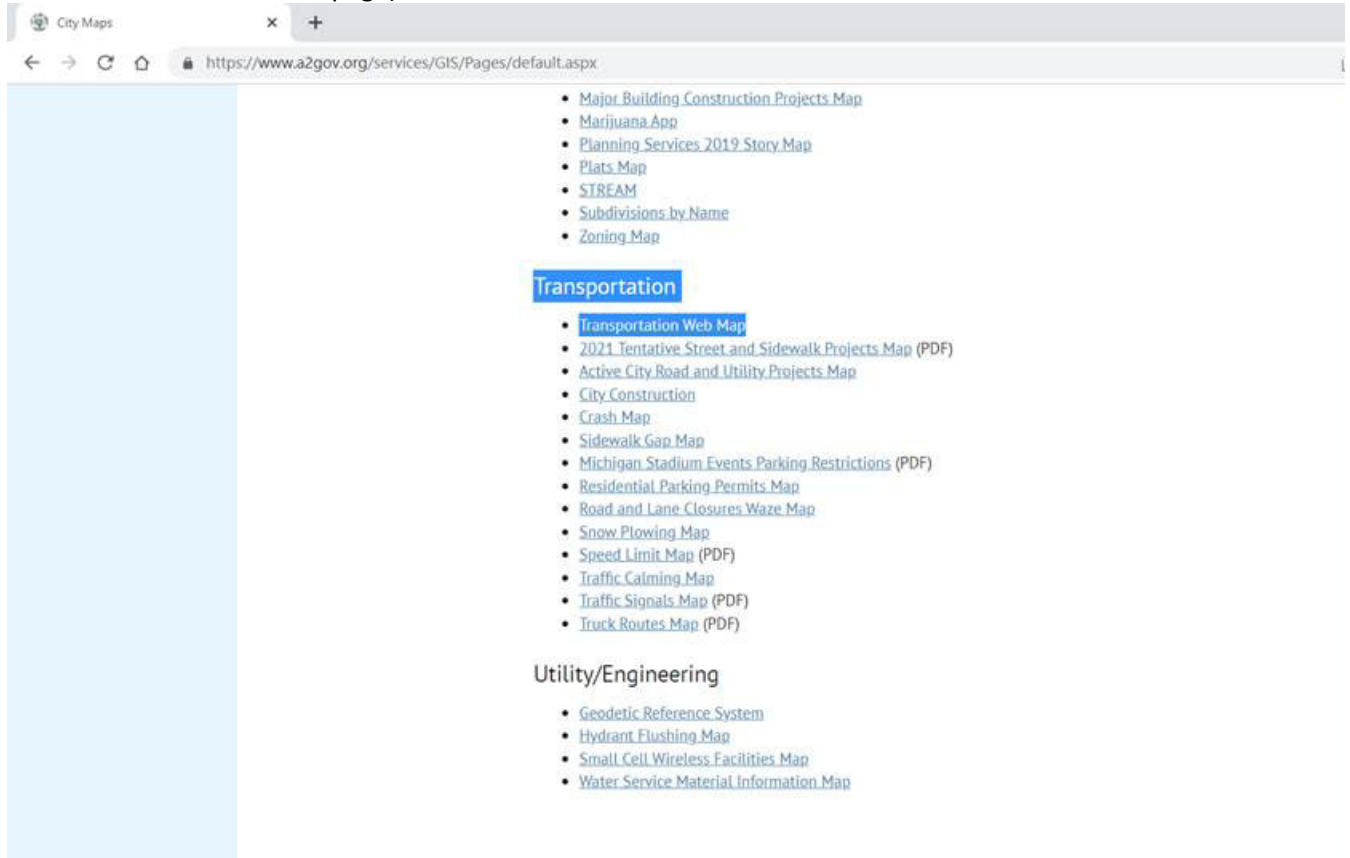
From: City of Ann Arbor Transportation Commission
Sent: Thursday, February 17, 2022 11:05 AM
To: City of Ann Arbor Transportation Commission
Cc: Hill, James; Miller, Ethan
Subject: New Ann Arbor online transportation map

Good Morning,

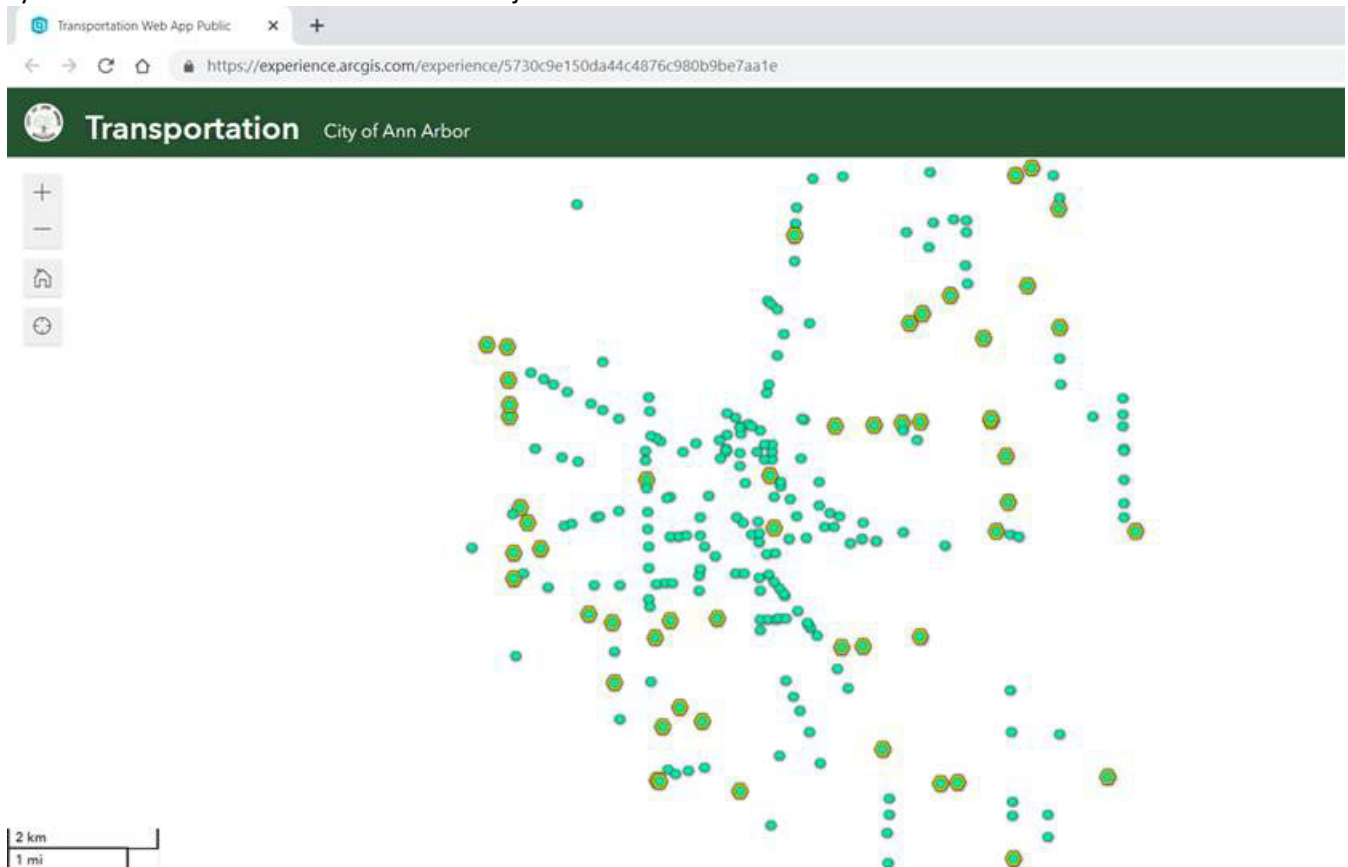
In follow-up to an announcement made at last night's Transportation Commission meeting, a fairly comprehensive online transportation map was published this week on the City Maps website (<https://www.a2gov.org/services/GIS/Pages/default.aspx>).

Some notes on how to access and use the map:

- The map is titled "Transportation Web Map" and is the first link under the "Transportation" header (located towards the bottom of the page):

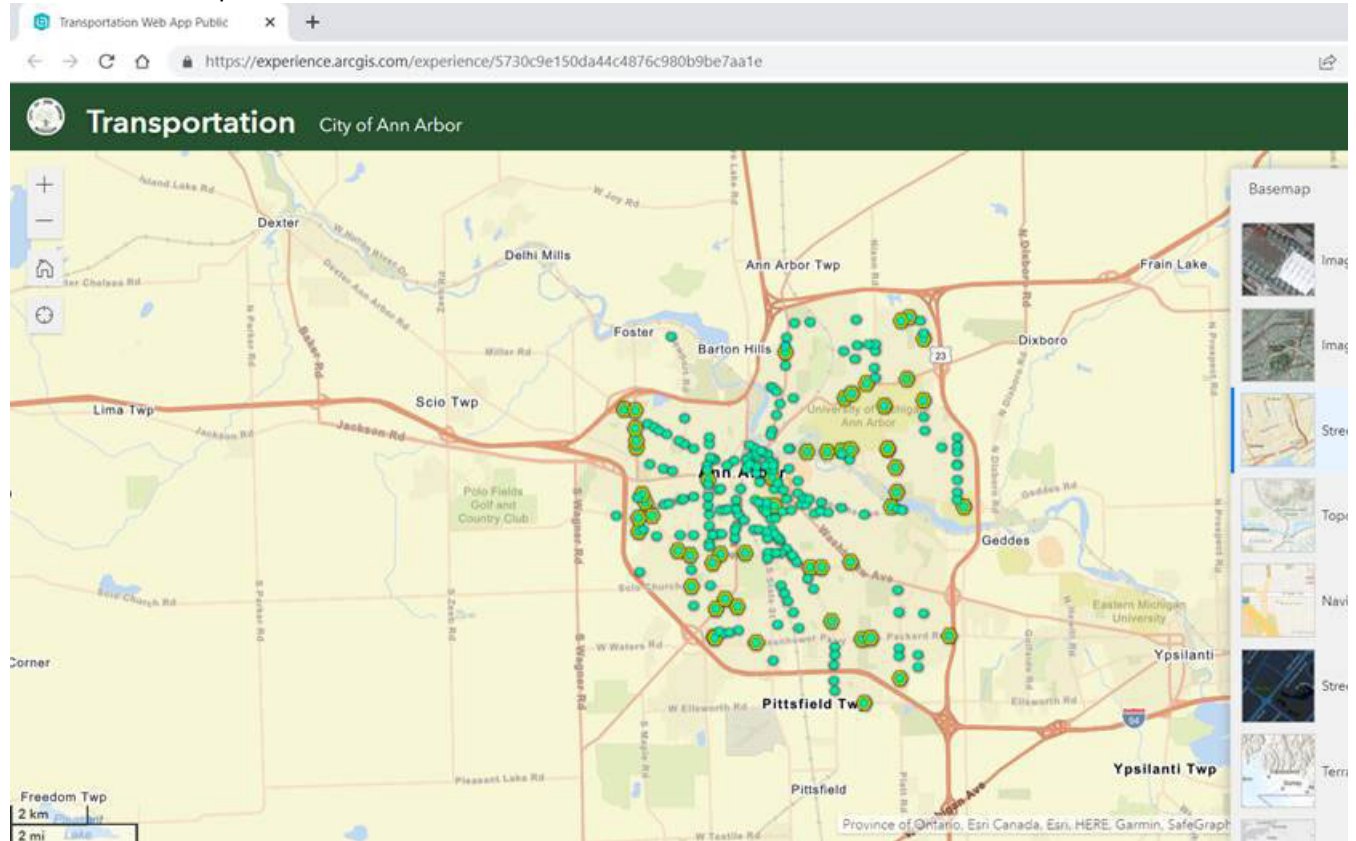


- When you first land on the map page, your default view might be a ‘constellation of dots.’ That’s because the system defaults to show “Crosswalks – Major Street Uncontrolled:”

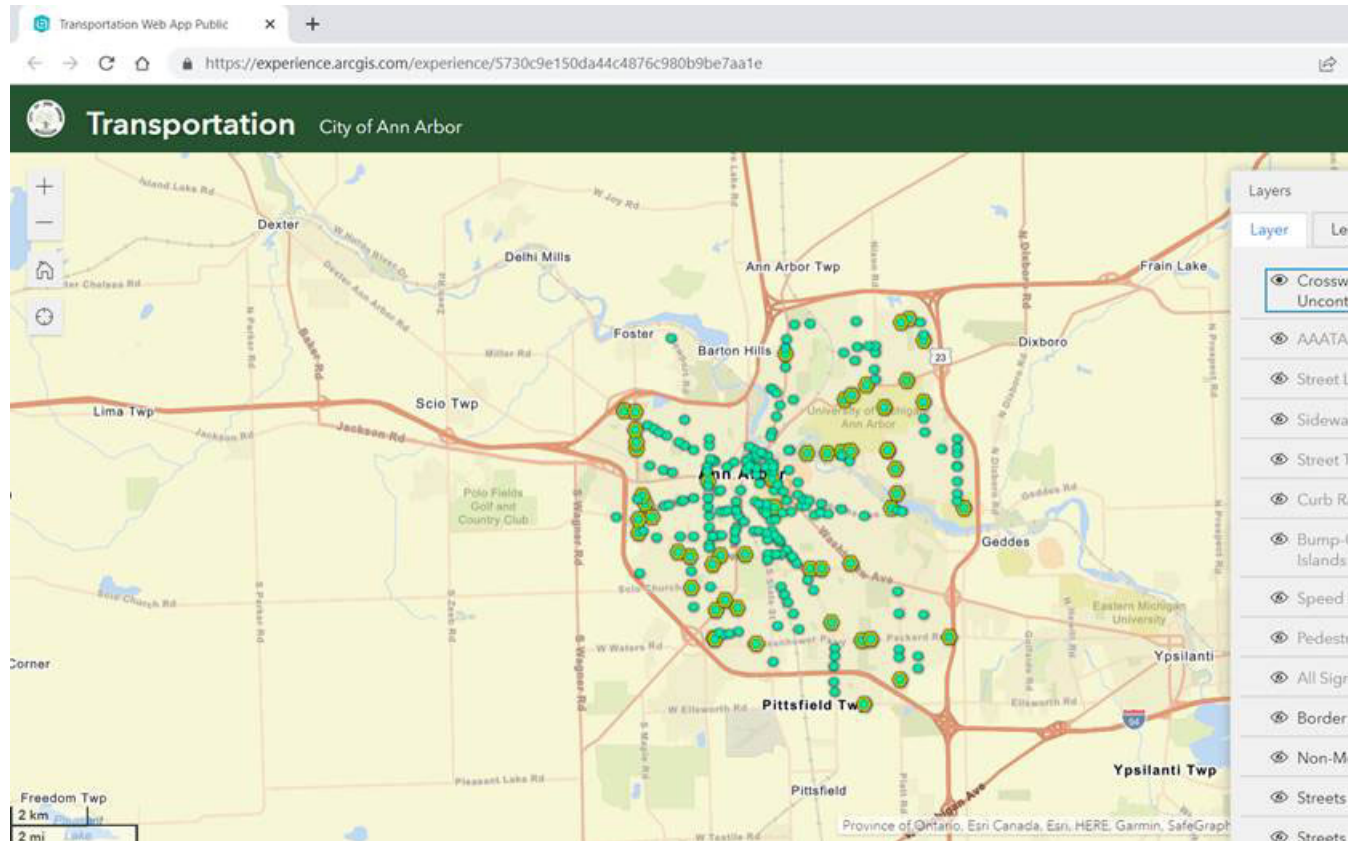


- To orient your view better, I suggest you first change the Basemap by clicking on the “Basemap” button – the third square in the upper right hand corner. For example, here is the view of the map when selecting the

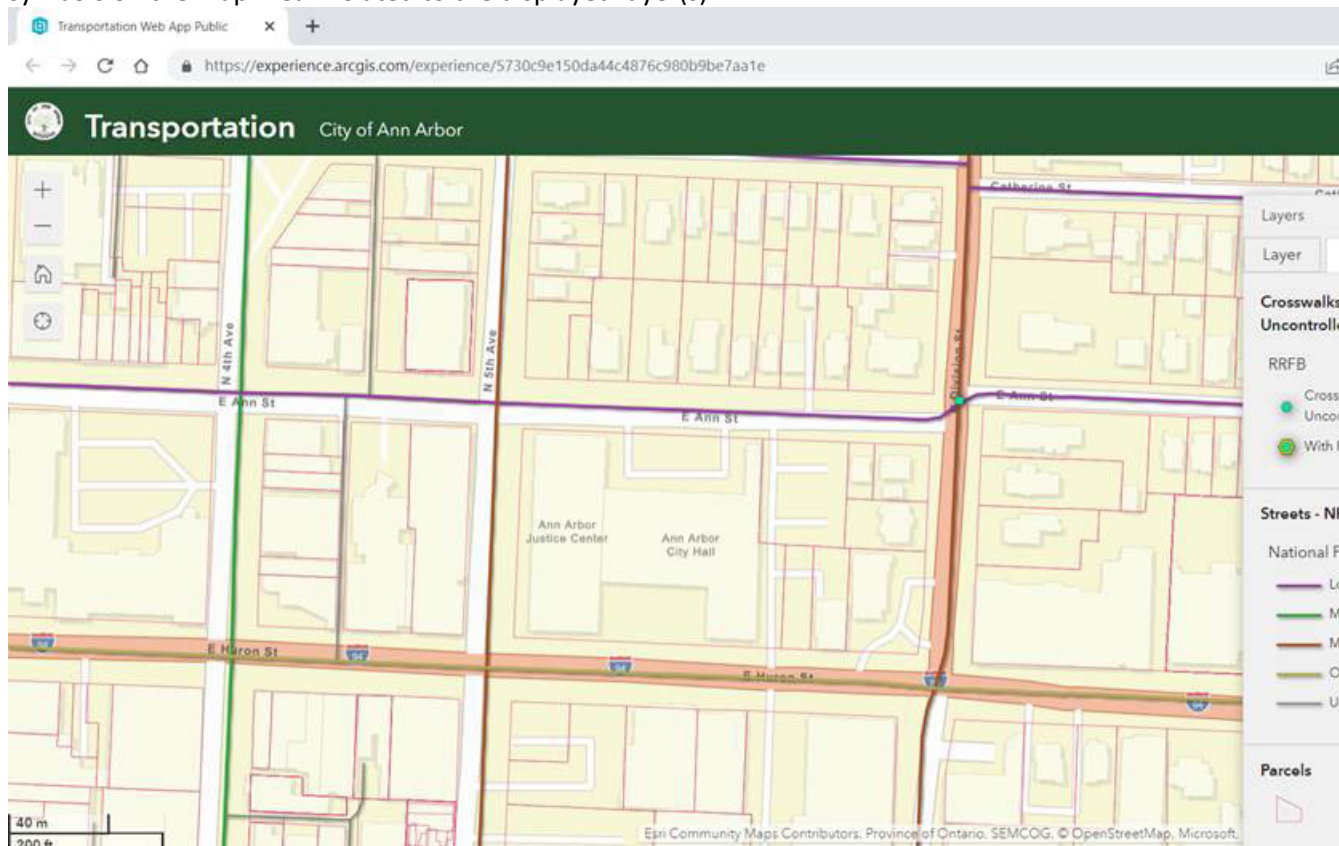
“Streets” basemap:



- You can change the layers by clicking on “Layers” button – it is the second square in the upper right-hand corner:



- If a layer is greyed-out that is probably because the view is zoomed out too far and won't display unless zoomed in.
- Play around with adding different layers to the geography in which you are interested. There is data related to pedestrians (crosswalks, sidewalks, bump-outs, curb ramps, pedestrian signs), bicycles (non-motorized routes, Border to Border Trail), vehicles (speed limits, road classification, street ownership, signs), transit (bus stops), and other (streetlights, street trees, parcels).
- Lastly, when you add a layer and want to know what the map is displaying, click on the "Legend" tab located in the layers pop-up. For example the map below, is zoomed in to the area around City Hall and is showing the "Streets – NFC" and "Crosswalks – Major Street Uncontrolled" layers. The legend shows what the colors and symbols on the map mean related to the displayed layer(s)



Play around with this map and please share this information with others that might find it of interest or use. Also, feel free to suggest improvements.

Regards,

Raymond

Raymond Hess, AICP-CTP (he, him, his) | Transportation Manager | Public Services
 City of Ann Arbor | 301 E. Huron Street | PO Box 8647 | Ann Arbor, MI 48107-8647
 Ph: 734.794.6410 x43675 | Cell: 734.535.8989 | Email: RHess@a2gov.org
[Facebook](#) | [Twitter](#) | [A2 Fix It](#)



EVERYWHERE · EVERYONE · EVERY DAY.
a2gov.org/A2BeSafe