



Energy and Equity: Updates on the Bryant Neighborhood Collaboration

Jordan Larson, Community Engagement Innovator
City of Ann Arbor
Office of Sustainability and Innovations
jl Larson@a2gov.org

TABLE OF CONTENTS



1. General Overview
2. Grounding the Work
3. Planning
4. Implementation
5. District Geothermal
6. Additional Work
7. Takeaways

Bryant Neighborhood Project



Why the Bryant Neighborhood?



- Frontline community with historic under-investment
 - Over 50% POC
 - 75% low-income
 - Ave energy costs \$13-1800/yr.
 - 1/3 classified as "energy cost burdened"
- Community Action Network (CAN) neighborhood center actively engaged in neighborhood and partnering with A²ZERO
- Leadership from within the community
- 260 homes built in 1950's, half owner-occupied and half renters



Community Action Network



- Community Based Organization (CBO) operating seven community centers in the county
- Bryant Community Center operates directly in the community
 - Food pantry (largest in the county)
 - After school and summer programs
 - Community and capacity building
- Essential to the work



Planning



- Goal: First fully decarbonized existing neighborhood in Ann Arbor (Midwest, and possibly US).
- McKnight foundation grants to do whole-home assessments
 - Paying residents to lead initiatives, train on assessments
 - Energy assessments developed by residents – indoor air quality, envelope issues, mold and other safety concerns, solar potential
- Funding for improvements
 - Applying for and strategically combining grant funds

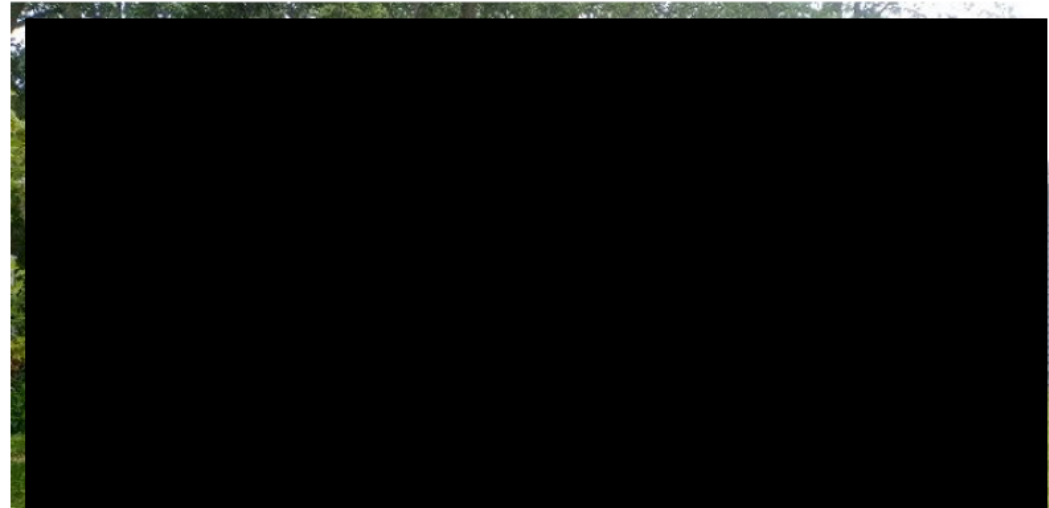


Energy Assessments



- Based on traditional energy assessments with input from residents
 - Changed name from audits – uncomfortable terminology
 - Added additional health and safety items
 - Compensate residents for completed assessments
- Creates report on the home and what can be done to make improvements improve
- Track and evaluate through Snugg Pro

Your Energy Assessment



Thank you for your time and participation in the virtual energy assessment. These assessments are vital in helping to understand the needs of the homes in the Bryant neighborhood and the information collected will assist in applying for funding that could assist homeowners with paying for energy efficiency upgrades and electrification of heating systems and appliances.

The information on the following pages outlines measures that could decrease your energy use and costs based on findings from your assessment. Feel free to contact the outreach team with any questions.

Inside Your Report

Cover	1
Concerns	2
Energy Use	3
Solutions	4
Upgrade Details	5
Health & Safety	18
Additional Notes	20
Glossary	21

Making Improvements



- Using results from the assessments, CAN and OSI coordinate and fund improvements to the homes
 - Health and safety > energy efficiency > beneficial electrification > renewables
 - Multiple homes with drainage issues in basement, exposed wires in attics
- Work with residents the entire time
 - Resident has final say on upgrades and contractor
 - Holding off on heat pumps, for now
- Fully grant funded through a combination of grants applied for by CAN and OSI
 - State MI-HOPE program
 - County OEDC Weatherization Assistance Program
 - Builders Initiative
 - Solar Moonshot

Making Improvements

Before



After



Making Improvements



Before



After



Making Improvements



Before



After



Making Improvements



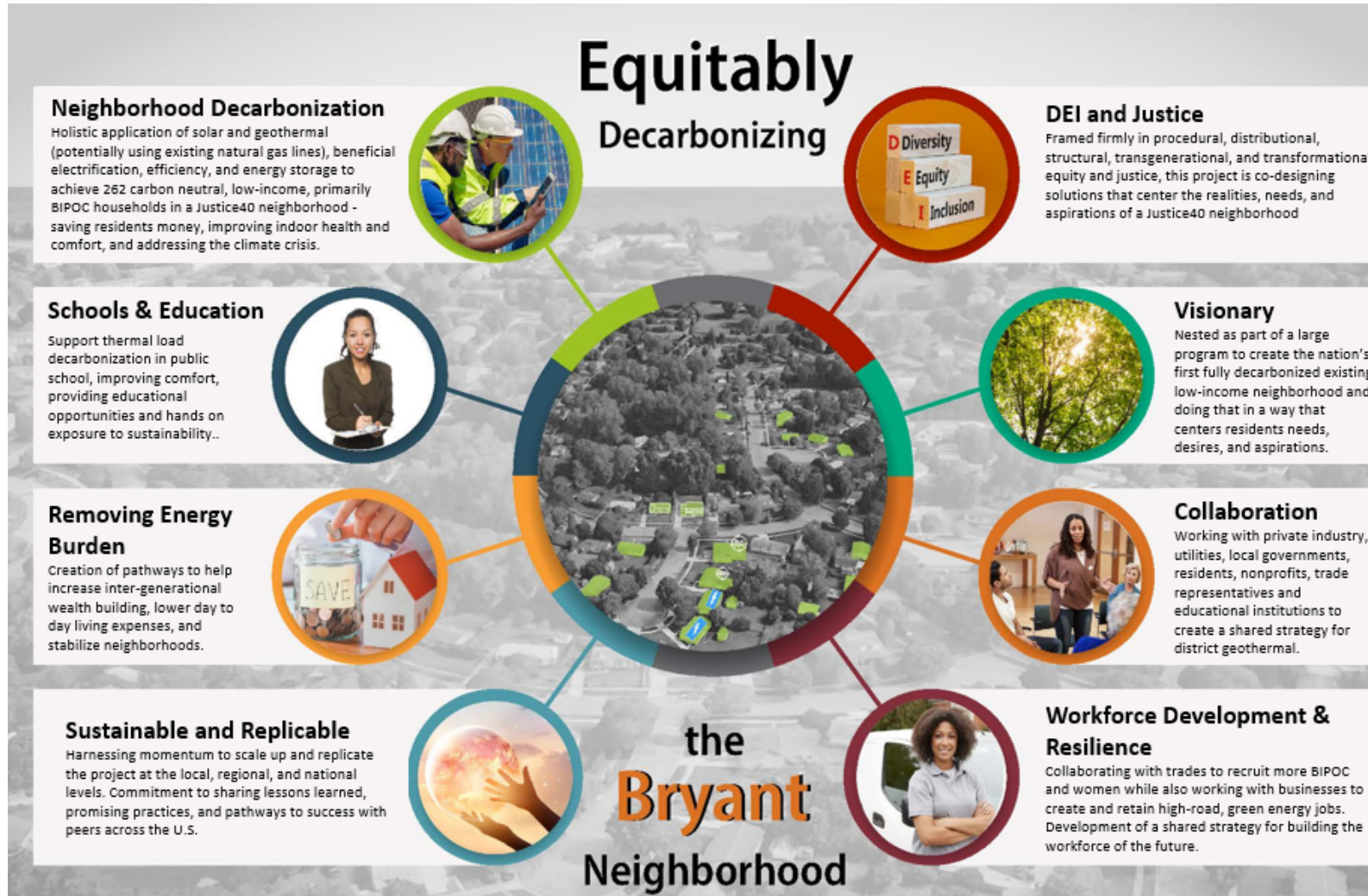
More Information



A screenshot of a webpage with a dark teal background. At the top left, it says 'MCKNIGHT FOUNDATION'. A navigation bar at the top right contains links for 'PROGRAMS', 'GRANTS', 'IMPACT INVESTING', 'NEWS & IDEAS', and 'ABOUT'. The main content area features the title 'Making Ann Arbor's Bryant Neighborhood the Most Sustainable Place in America' in a large, white, serif font. Below the title is the subtitle 'A Model for Community-Centered, Equitable Climate Action' in a smaller, white, sans-serif font. The author's name 'By Cinnamon Janzer' is at the bottom left. On the right side of the page, there is a grid of six portrait photographs of community members. The top row shows a man in a white jacket, a woman in a leopard print top, and a woman in sunglasses. The bottom row shows a woman in a tie-dye shirt, a woman in a blue A2ZERO t-shirt, and a woman in a black t-shirt with a pink flower.

Article and video: <https://www.mcknight.org/news-ideas/making-ann-arbor-bryant-neighborhood-most-sustainable-place-america/>

District Geothermal



District Geothermal



Upcoming Timeline



- February – Community Bake Off, Design charette #1 (project intro)
- March – Community Game Night, Design charette #2 (project design)
- April – Community Energy Efficiency Hunt, Landlord Geothermal Workshop
- May – Mother’s Day Celebration, Midway point project update
- June – Father’s Day Celebration
- July – Community Garden Contest, Green careers event
- August – Community Clean-up, Back to School BBQ
- September – Community Movie Night, Project celebration

Upcoming Timeline



- February – Community Balancing #1 (project intro)
- March – Community Balancing #2 (design decisions)
- April – Community Balancing #3 (Final Workshop)
- May – Month of Outreach
- June – Fieldwork (TBD)
- July – Community Balancing #4
- August – Community Balancing #5
- September – Project Completion Celebration

All throughout – continued door-to-door outreach and office hours to get more energy assessments and residents signed up for energy retrofit work



Additional Work

Resilience Hub/Decarbonization



E-Cargo Bike



10,000 Trees Initiative



- Bryant Neighborhood has low canopy coverage
- Multiple free tree giveaways, and community tree planting events



Flooding Mitigation Efforts

- Rain gardens
- Stormwater mitigation



2010 flooding event in Bryant Neighborhood



Takeaways



- Address residents' needs and concerns first
- Work with local, engrained CBO
 - Essential for trust, capacity building
 - Equal partners – write into your budget if you can, provide capacity
- Give power to the residents
 - Involve in all aspects of the process
 - Residents make final decision
 - Residents decide who we hire to work in the neighborhood



Funding Overview



- MSHDA: \$1,250,000 (all but 5% of these funds go directly into home renovations, energy retrofits, etc)
- Builders Initiative: \$300,000 (\$150K per year x 2 years- all these funds go directly into home renovations, energy retrofits, and solar to offset increased energy costs)
- DOE Geothermal: \$560K (planning grant to determine the feasibility of creating a regional geothermal district that impacts the Bryant neighborhood as well as the Wheeler Center, CMH, Bryant Elementary, and Bryant Community Center).
- McKnight: \$75k for planning (early in process)
- McKnight: \$75k for project continuation
- City of Ann Arbor: \$75k year for up to 5 years to support engagement and outreach efforts
- Solar Moonshot: \$25K to solarize two Bryant households
- EECBG: \$182,360 to decarbonize the Bryant Community Center



THANK YOU

Jordan Larson, Community Engagement Innovator
City of Ann Arbor
Office of Sustainability and Innovations
jl Larson@a2gov.org