



Ann Arbor Greenbelt
Open Space & Farmland Preservation

15 Years of Progress

www.a2gov.org/greenbelt



The Vision

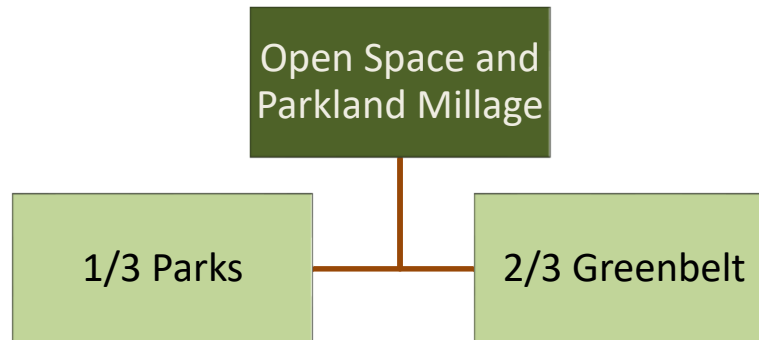
The Open Space and Parkland Preservation Millage (aka Greenbelt) **started with a grand vision that was overwhelmingly supported by Ann Arbor voters.** 30-year, 0.5 mil tax levy.





The Vision

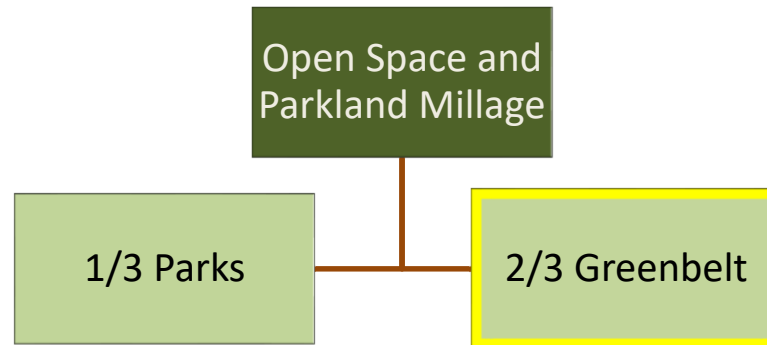
The Open Space and Parkland Preservation Millage **funds new parkland purchases in within the City, and land preservation efforts around the City within the Greenbelt District.**





The Vision

A “Greenbelt” was a **visionary** concept, truly **pioneering**, and a **testament to the City’s conservation ethics**.





The Vision

That vision was of a City surrounded by the **farmland that characterizes Michigan's rural heritage and supports the local food economy** – preserved forever.





The Vision

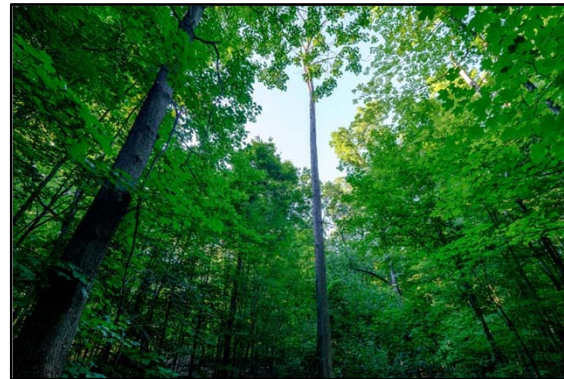
It was a vision of **natural green infrastructure that safeguards our drinking water** – preserved forever.





The Vision

It was a vision of **natural open spaces that offer scenic views, recreation and biodiversity** – preserved forever.





The Approach



The Greenbelt funds can purchase **private** development rights **AND** purchase property to establish **public** recreation areas.



The Approach



Cost-effective land conservation:
Purchase of Development Rights.

This ensures **the property remains in its current condition.**



The Approach



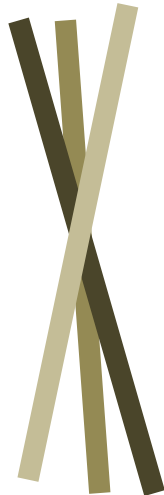
- Development Rights
- Right to Enjoy
- Access Rights
- Right to Sell
- Etc.

Owning **private property** is like owning a bundle of sticks.

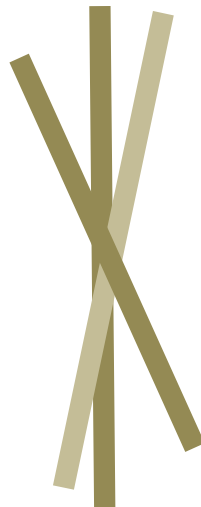
Each stick represents a **right you have** to that property.



Landowner Retains
Some Rights



Development Rights
Removed



The Approach

By purchasing the development rights, select rights are **removed** from the bundle (the deed). **Forever.**

Removing those rights **guarantees the preservation** of the private property.



The Investment

The total Fair Market Value of the land protected by the Greenbelt so far is **\$64,188,393**





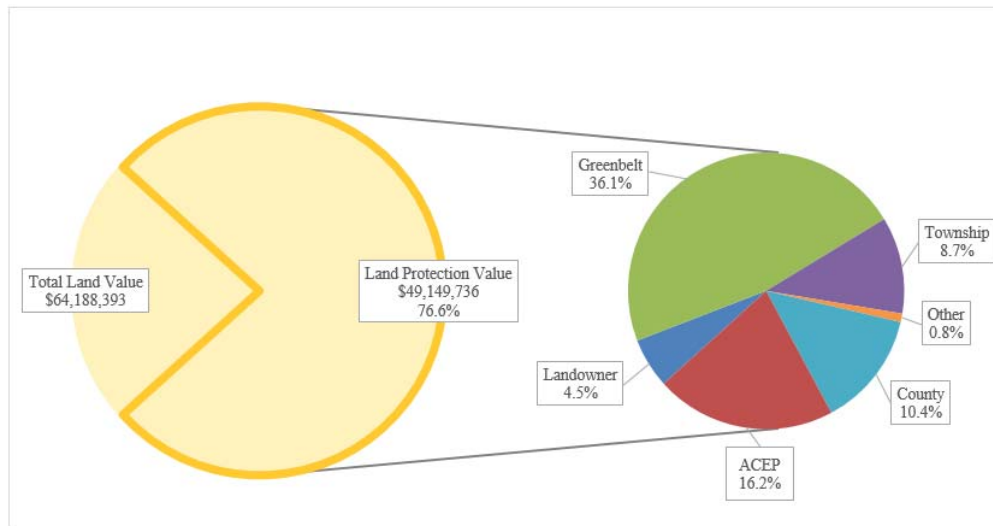
The Investment

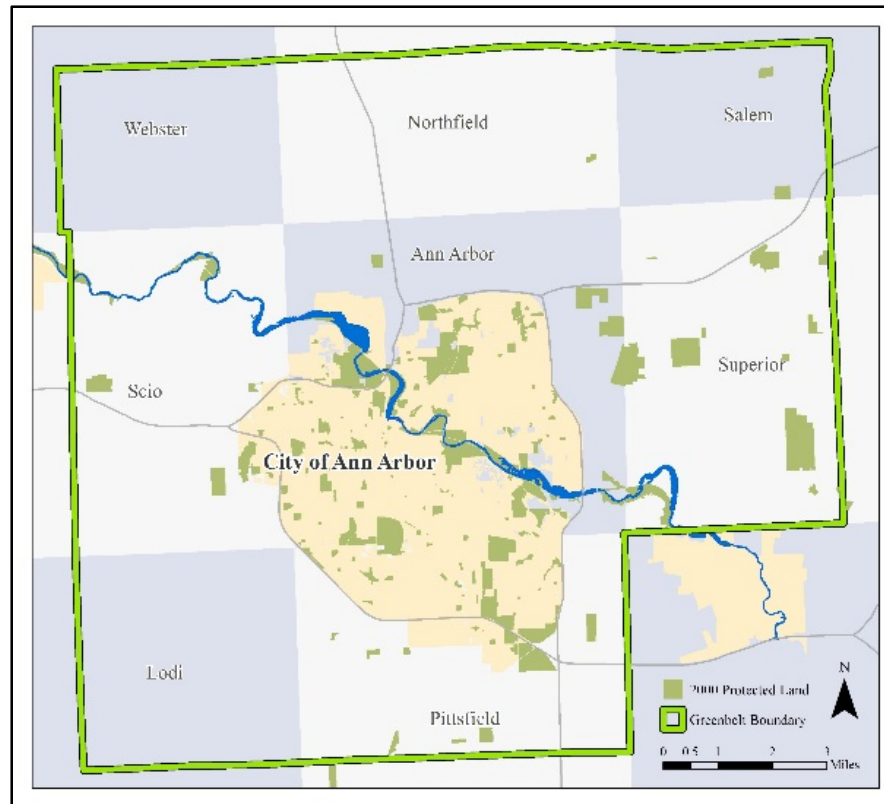
The City taxpayers have only paid \$23,184,601 (36%)

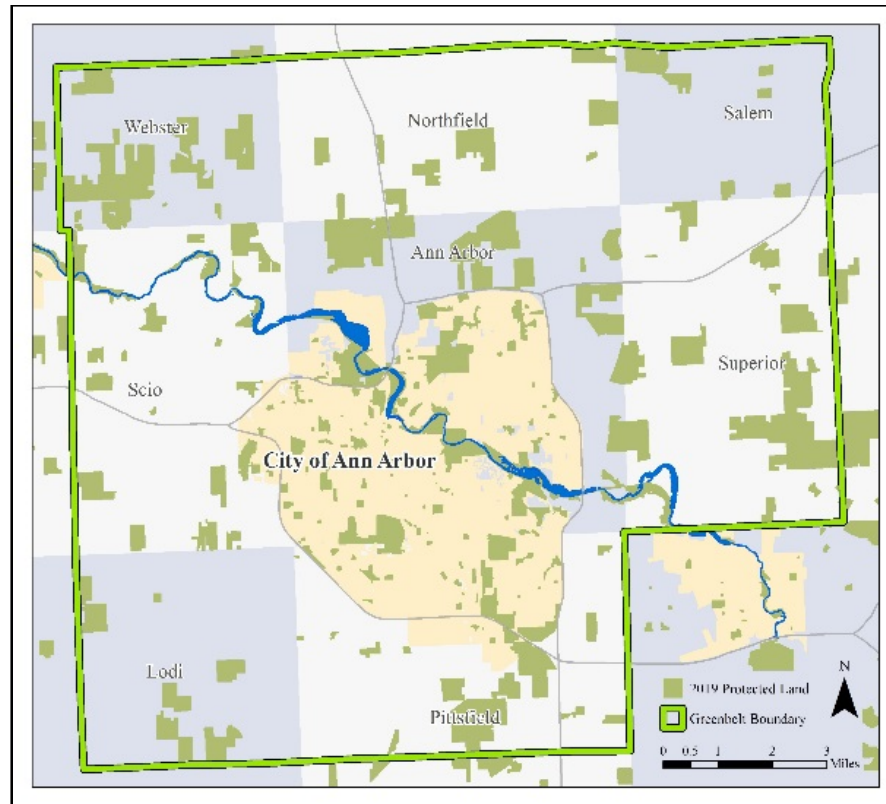




The Investment



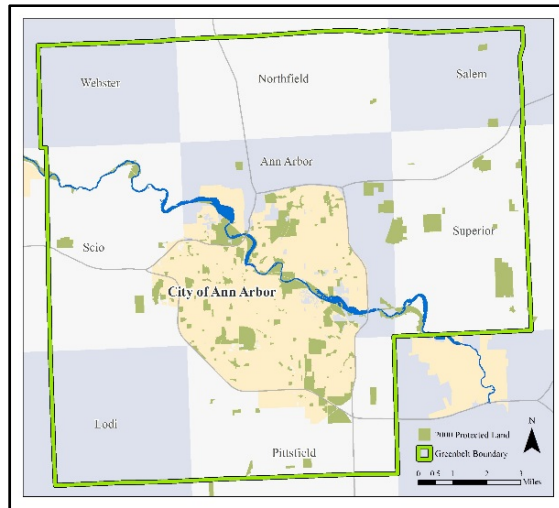




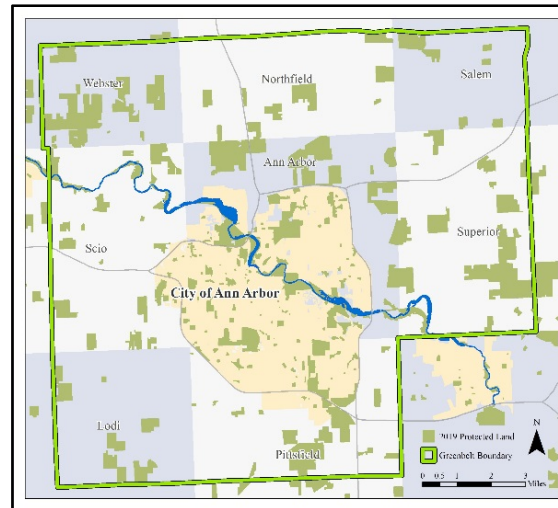


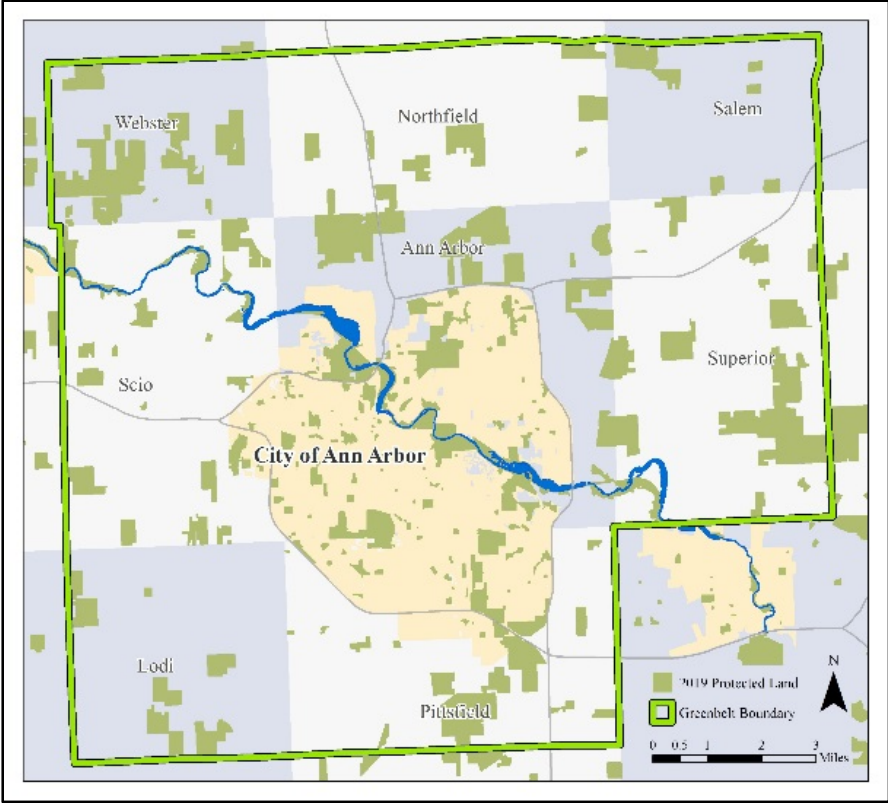
The Impact

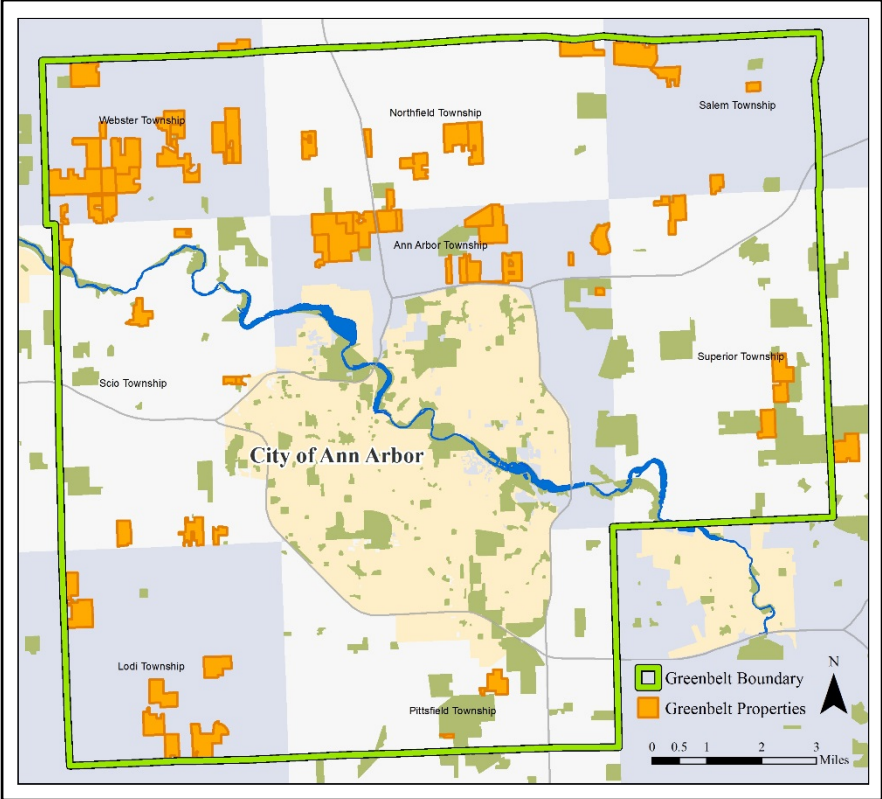
2000



2019







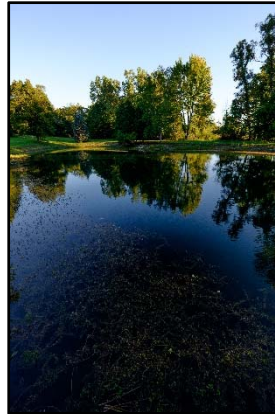


The Impact

Farms and
Farmland



Protecting Our
Waters



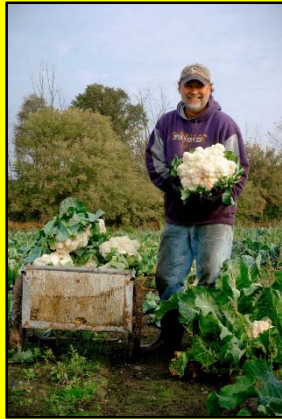
Open Space and
Biodiversity





The Impact

Farms and
Farmland



Protecting Our
Waters



Open Space and
Biodiversity





The Impact:

Protecting Farms and Farmland



Since 1935, **Washtenaw County** has **lost 223,785 acres of farmland.**

Since 2007, Michigan averaged **losses of 2 acres every hour, and 2 farms each day.**



The Impact:

Protecting Farms and Farmland



Farmers **over 65** now outnumber farmers **under 35** by **6.4 to 1**

Within 10 years, approximately **35% of all Michigan farmers** anticipate retiring

2/3 of all US farmland will **need a new farmer** in the next 25 years.



The Impact:

Protecting Farms and Farmland



The Greenbelt has protected **50 working farms**

5 farms source food to local markets

6 new farmers able to access the land



The Impact:

Protecting Farms and Farmland



The Greenbelt's work averages to **1 acre protected every day.**

The Greenbelt's work represents **40% of the land protected by Purchase of Development Rights** in Washtenaw County.



The Impact:

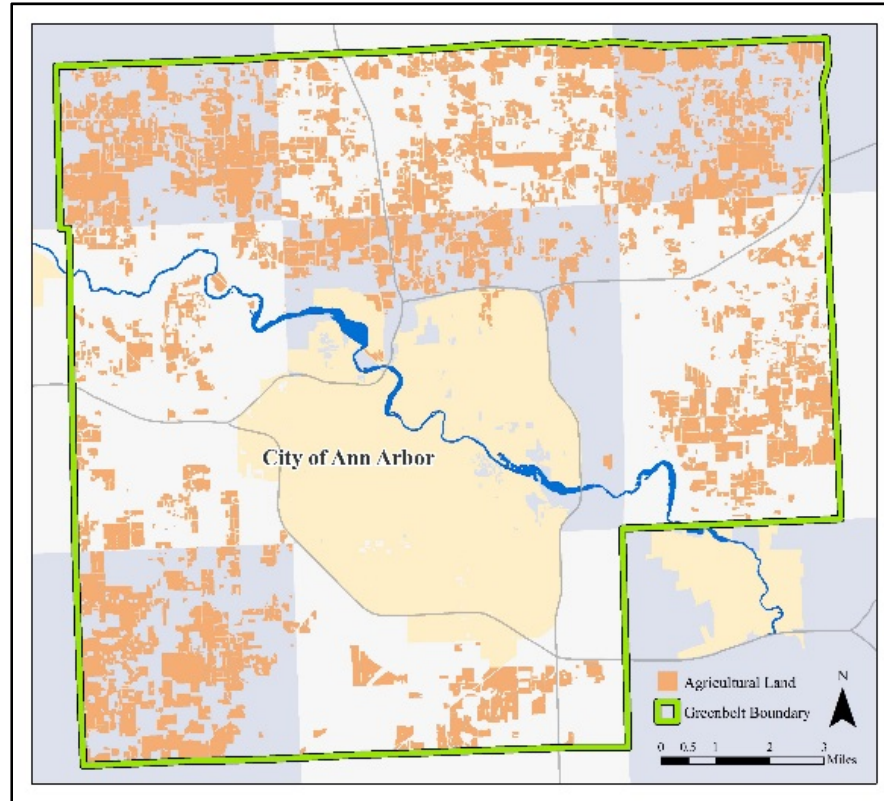
Protecting Farms and Farmland

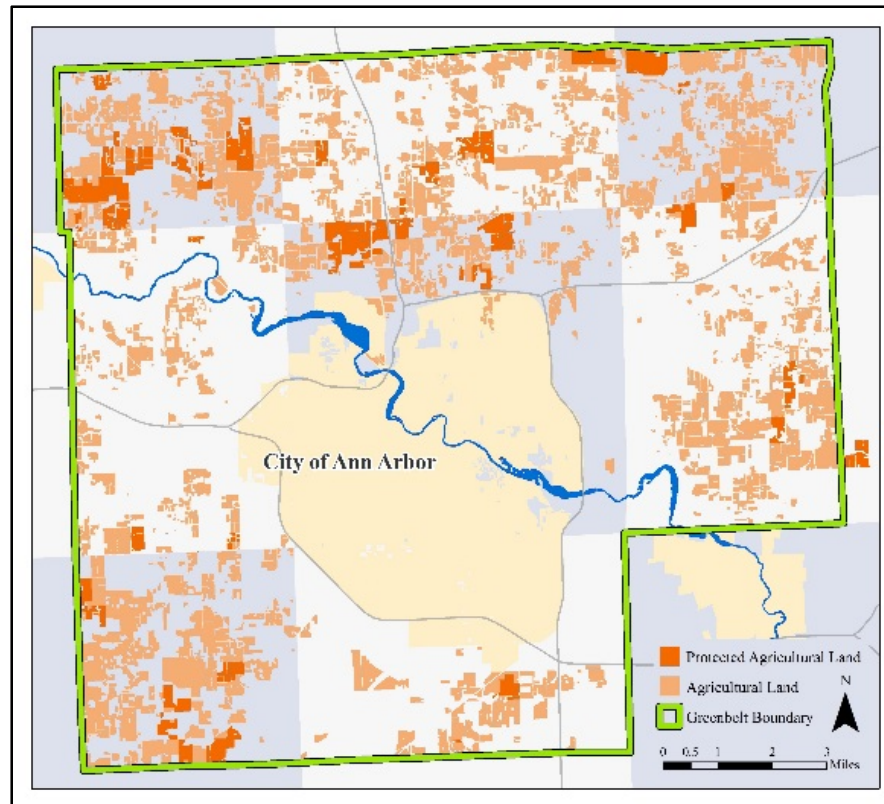


Not every Greenbelt property produces food for local markets.

But we've **protected the land base** that can serve local markets in the future.

Greenbelt land can produce enough food to **feed over 55,000 people/year.**



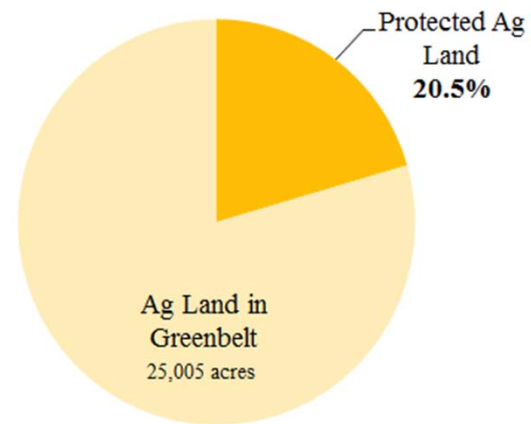


ML1



The Impact:

Protecting Farms and Farmland



Slide 29

ML1

add acres under percent and change wording. Ag land in greenbelt

Mitchell, Leigh, 7/2/2019

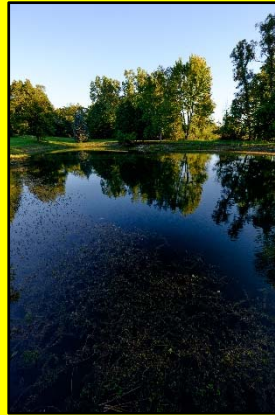


The Impact

Farms and
Farmland



Protecting Our
Waters



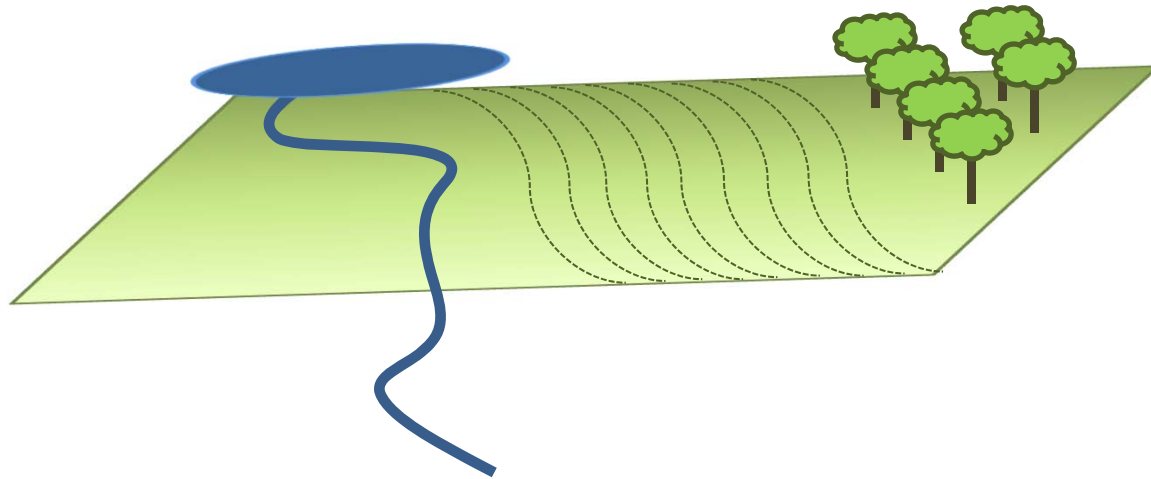
Open Space and
Biodiversity





The Impact:

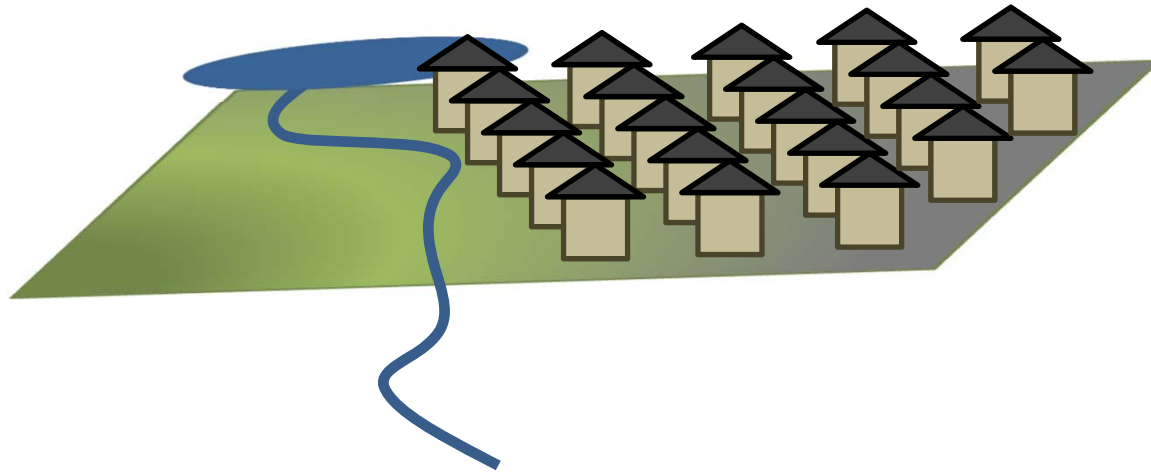
Protecting Our Waters





The Impact:

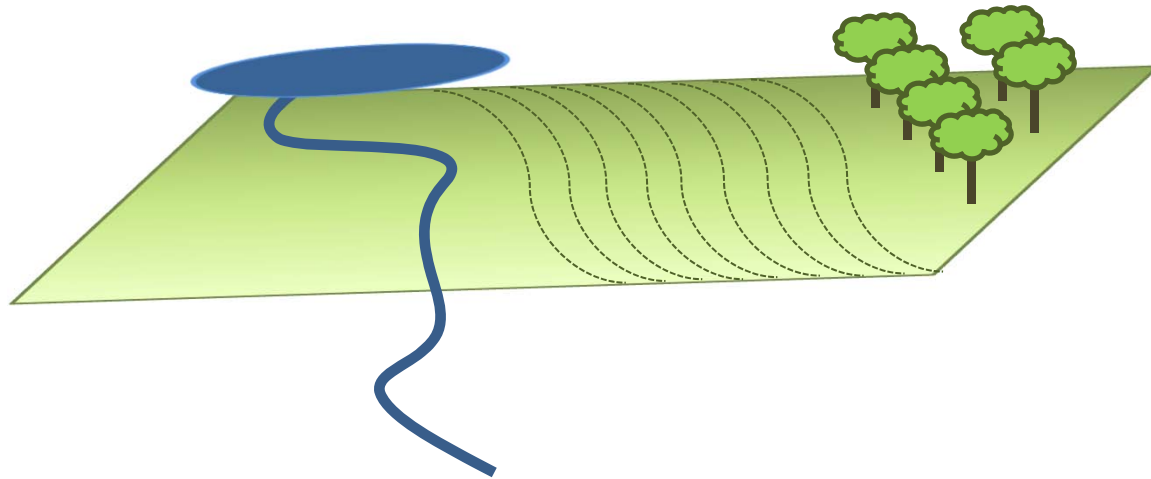
Protecting Our Waters





The Impact:

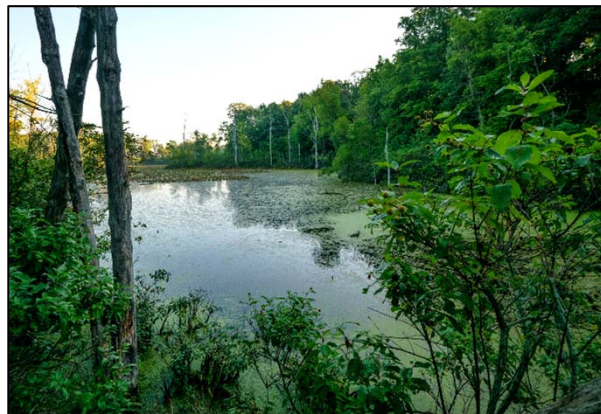
Protecting Our Waters





The Impact:

Protecting Our Waters



The land protected by the Greenbelt constitutes an estimated reduction of **120,992 lbs/year** of total suspended soils, **4,248 lbs/year** of nitrogen and **768 lb/year** of phosphorous entering our waterways.



The Impact:

Protecting Our Waters



The Greenbelt has protected over **1,500 acres of wetlands**, contributing to the natural filtration of water entering our ecosystems.



The Impact:

Protecting Our Waters



The Greenbelt has protected over **19 miles** of river, stream and waterway frontage.

60% of those waters are in the **Huron River** watershed, and contribute to the source water protection of the City's drinking water.

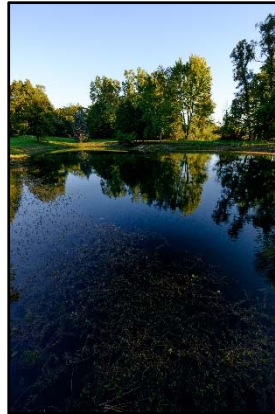


The Impact

Farms and
Farmland



Protecting Our
Waters



Open Space and
Biodiversity





The Impact:

Protecting Open Space and Biodiversity



The Greenbelt has helped establish **10 new public nature preserves** in the region, totaling **642 acres of diverse habitats** for the public to explore.



The Impact:

Protecting Open Space and Biodiversity



The Greenbelt has helped establish **10 new public nature preserves** in the region, totaling **642 acres of diverse habitats** for the public to explore.



The Impact:

Protecting Open Space and Biodiversity

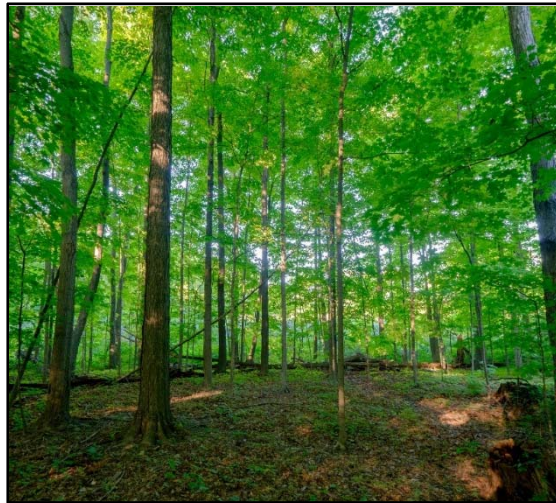


These nature preserves includes over **6.25 miles of hiking trails** for public recreation



The Impact:

Protecting Open Space and Biodiversity



The Greenbelt has protected **1,286 acres of woodlands**, preserving our regional habitat and sequestering carbon



The Impact:

Protecting Open Space and Biodiversity



In all, the Greenbelt has invested **\$10,504,677** in the protection of **publicly accessible open space** around the City.

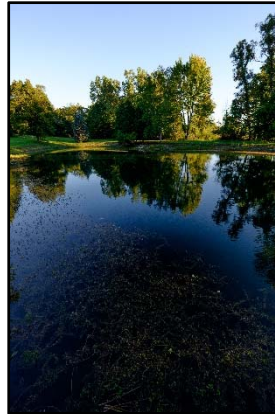


Looking Forward

Farms and
Farmland



Protecting Our
Waters



Open Space and
Biodiversity





Looking Forward



With 15 years left . . .

***What is your vision
for the Greenbelt?***



Ann Arbor Greenbelt
Open Space & Farmland Preservation

Questions/Comments?

Remy Long, Program Manager

rlong@a2gov.org

www.a2gov.org/greenbelt