

GENERAL NOTES: EXTERIOR ELEVATIONS

- EXTERIOR ELEVATIONS ARE DIAGRAMMATIC ONLY, ESPECIALLY IN REGARD TO TRIM AND CASING DESIGN. SEE SELECTIONS, DETAILS, AND SPECIFICATIONS FOR MORE INFORMATION
- ALL DIMENSIONS ON THESE DRAWINGS ARE TAKEN TO FINISH UNLESS OTHERWISE NOTED
- INSTALL MECHANICAL AND PLUMBING VENTS AS REQUIRED (NOT SHOWN, TO BE DESIGN-BUILD BY SUBCONTRACTORS)
- WINDOW AND DOOR ELEVATIONS ARE SHOWN FOR GRAPHIC REPRESENTATION ONLY. SEE WINDOW AND DOOR SCHEDULES FOR FINAL SIZES AND LOCATIONS

EXTERIOR TRIM INFORMATION:

ALL EXTERIOR TRIM (INCLUDING FASCIAS, FRIEZES, WRAPS, SOFFITS, AND CASINGS) TO BE XXXXXXXX.

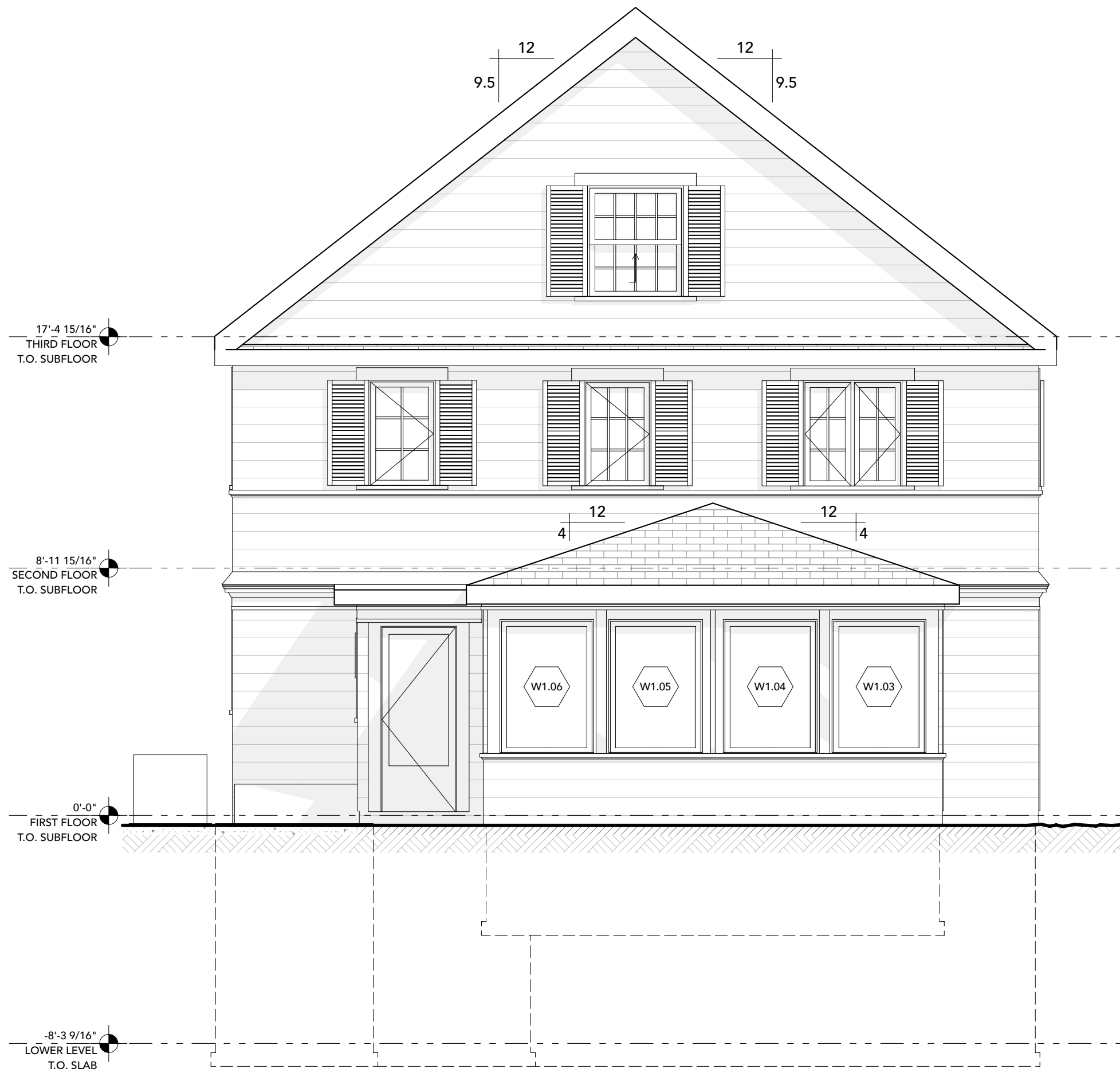
- FASCIA:
- FRIEZE:
- CORNERBOARDS:
- BANDBOARD
- SOFFIT:
- WINDOW CASING, HEADER, + APRON:
- WINDOW SILL:
- DOOR CASING + HEADER:



West Exterior Elevation

SCALE: 1/4" = 1'-0"

3



North Exterior Elevation

SCALE: 1/4" = 1'-0"

2



East Exterior Elevation

SCALE: 1/4" = 1'-0"

1

NOT FOR CONSTRUCTION