

# Solid Waste Programs Updates

---

ENVIRONMENTAL COMMISSION MEETING

DECEMBER 6, 2018

# Topics

---

State Level Items

Regionalization

Solid Waste Resources Management Plan (SWRMP) Update

Services and Contracts

Staffing

Financial Items

# State Level Items

---

## Resolution of Support for Governor Snyder's Recycling Funding Initiative

- City Council approved Resolution R-18-466 on 11/19/18
- Senate Bill 943 still in Committee
- May move forward during Lame Duck session

## HB 6532 Introduced 11/27/18

- Removal of \$0.10 can and bottle deposit
- Would end the \$0.10 deposit in 2023

## Michigan Recycling Coalition's Annual Conference

- Ann Arbor Sheraton Inn on 5/14/19 – 5/16/19
- City and RAA members of MRC Planning Committee

# Regionalization

---

## Authority Formation Committee

- Facilitated by Washtenaw County DPW
- Eight jurisdictions participating

<b>City of Ann Arbor</b>	<b>Ann Arbor Township</b>	<b>City of Dexter</b>	<b>Pittsfield Township</b>
<b>City of Saline</b>	<b>Pittsfield Township</b>	<b>City of Ypsilanti</b>	<b>Ypsilanti Township</b>

- Articles of Incorporation
  - Washtenaw Regional Resource Management Authority (WRRMA)
  - Final Draft nearing completion
  - Will be shared with other jurisdictions for consideration
  - Presented to Boards and Councils for action on acceptance
    - Anticipated presentation to Environmental Commission in January, 2019; City Council in February/March, 2019

# SWRMP Update

## Advisory Committee established

- Meeting #1 held Wednesday, 11/14/18
- Thirty-four (34) participants
  - Commissioners Brown and Mirsky participated
- Meeting Summary and materials (including video) on project website
  - [A2gov.org/swrmp](http://A2gov.org/swrmp)
- Meeting #2 on Tuesday, 1/15/19
  - 1:00pm – 3:00pm
  - DDA Conference Room

## Financial Analysis and Model Development

- Submittal to staff being finalized
- Will be reviewed by staff before distribution



# SWRMP Update

## What's Next?

- Finalize and distribute cost of service analysis
- Finalize and distribute benchmark analysis
- Draft questionnaire for scientific, random resident survey
- Begin costing out program and service options
- Begin procurement for contracts expiring June 2019
  - Provide flexibility for enhancements that emerge through the SWRMP and other ongoing efforts



# Services and Contracts

---



## SINGLE-FAMILY RESIDENTIAL

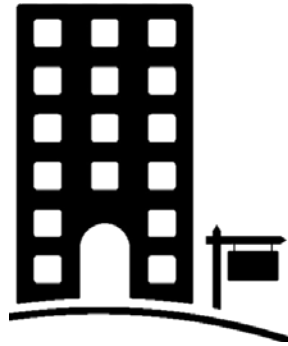
Trash: City



Recycling: RAA



Compost: City



## MULTI-FAMILY RESIDENTIAL

Trash: City or WM



Recycling: RAA or City



Compost: (Not offered)



## BUSINESSES & INSTITUTIONS

Trash: City or WM



Recycling: RAA or City



Compost: (Not offered)



## POST-COLLECTION

Trash

Advanced Disposal



Recycling

RAA / Rumpke



Compost

WeCare Denali



# Services and Contracts



## SINGLE-FAMILY RESIDENTIAL

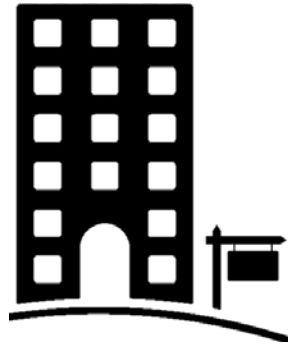
Trash: City



Recycling: RAA



Compost: City



## MULTI-FAMILY RESIDENTIAL

Trash: City or WM



Recycling: RAA or City



Compost: (Not offered)



## BUSINESSES & INSTITUTIONS

Trash: City or WM



Recycling: RAA or City



Compost: (Not offered)



## POST-COLLECTION

Trash

Advanced Disposal



Recycling  
RAA / Rumpke



Compost  
WeCare Denali





# Services and Contracts

---

## City will collect residential trash and compost

- City Council Resolution R-18-194
  - City staff will continue to perform collections
- Staffing levels maintained
- Management's right to assign work
  - Reassigning front-load operations to expand to year-round residential compost collections

## RFP being developed for:

- Trash dumpster collections
- Recyclables collections
- Processing of recyclables
  - AA MRF available for transfer loading to processing MRF
  - Proposals for utilization of AA MRF as processing facility will be accepted & evaluated
- Collections in the downtown core (subarea of the DDA)
  - Higher level of service
  - Separate pricing structure

# Services and Contracts

---

## Contract service provisions will include:

- Performance and outcome based measures
- Certain higher level(s) of service
  - 7-day a week collections in the downtown
- Right-sizing of equipment
- Customer service integration with City's function
- Contract to include "flexibility" for potential:
  - Regional solid waste authority
  - Downtown services through merchants associations/DDA

## Timeline

- RFP issued December
- Proposals due late January/early February
- Selection by early March

# Staffing

---

## City to continue collection services

- Operational staffing and resources required
- Public Works to be home of Solid Waste Programs

## Consolidation of program staff to Public Works

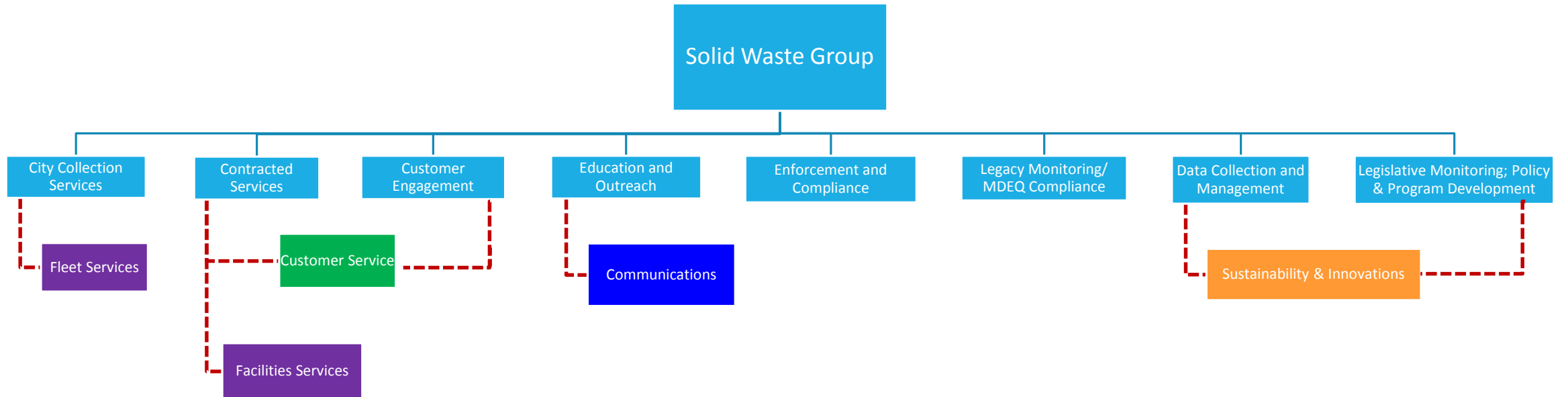
- Similar to other recent consolidations
  - Transportation Group into Engineering
  - Parks & Public Space Maintenance into Parks and Recreation

## Related and support roles by other units

- Fleet (collection vehicles)
- Facilities (MRF, Transfer Station and Compost buildings)
- Customer Service (accounts; customer point of contact)
- Communications (messaging and delivery)
- Sustainability and Innovations (monitoring SWRMP implementation & metrics; policy & program development)

# Staffing – Organizational Roles

---



# Staffing

---

Staffing examination and recommendations included in SWRMP

## Solid Waste Compliance Officer Position

- Position anticipated to be included in FY20/FY21 Budget Proposal

## Manager Role

- Need identified
  - Loss of Assistant Public Works Manager due to retirement
  - Only 1 Assistant Manager currently in place over all 6 work groups
- Role not yet fully clear
  - SWRMP completion with program recommendations July, 2019
  - Regional Authority establishment status not yet determined
- Cresson Slotten focused on Solid Waste Programs through 2019
  - City lead for SWRMP effort
  - Procurement for sunsetting contracted services
  - Assembly of customer data
  - Regionalization and County Solid Waste Plan Implementation Committee
  - Development of new manager position

# Financial Items

---

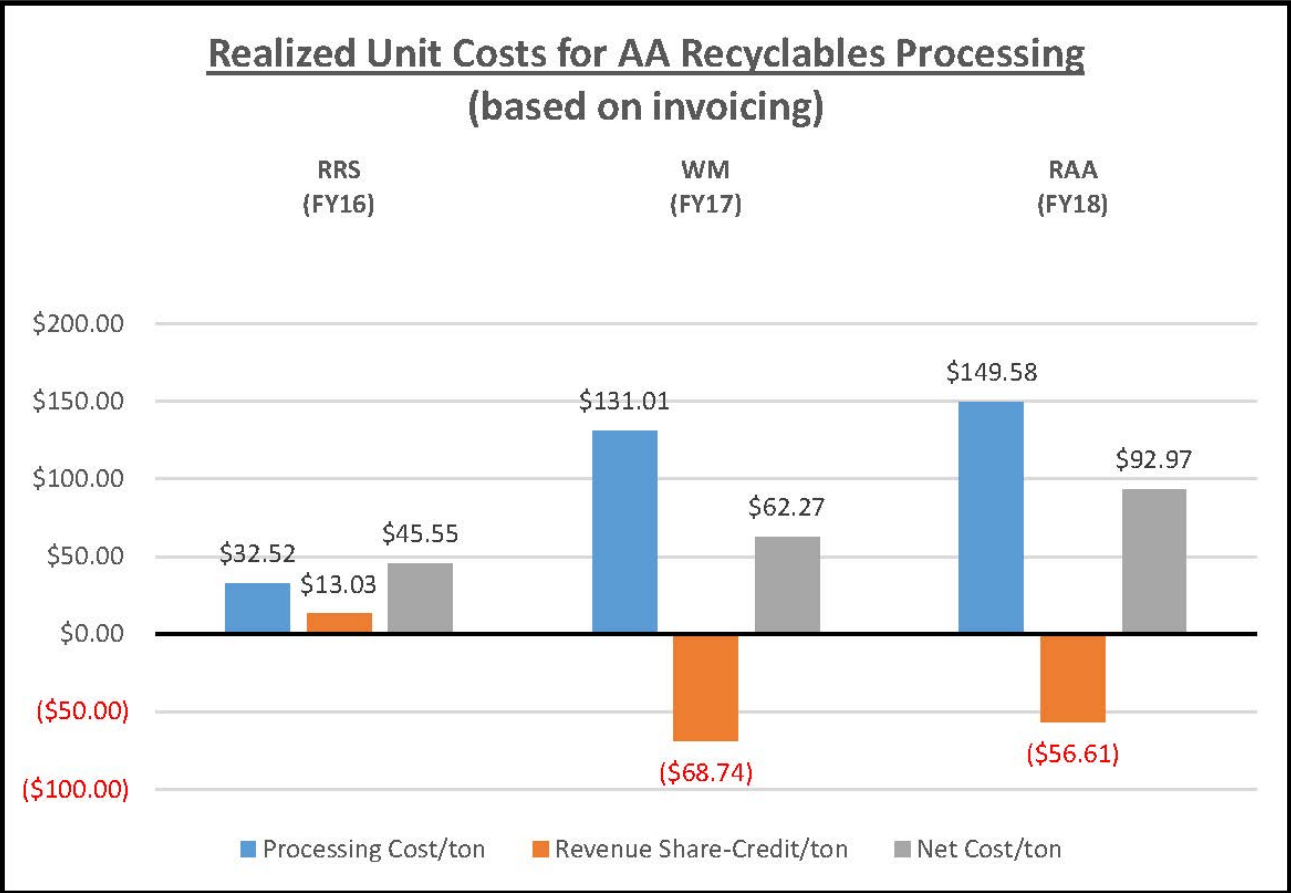
## Earlier Approach to Recycling Contracted Services

- Anticipated that commodity values may offset large part/most of costs
- Encouraged outside 3<sup>rd</sup> party material
- Shared funding structure for equipment replacement

## Hindsight tells us

- Recycling costs \$
  - Market volatility and outside influences can intensify realized net costs
  - Need to recycle, but not for cost savings/offset
- Shouldn't exceed capacity of facility/program
- Care, maintenance and reinvestment of capital equipment and facility necessary
  - Should be programmed into regular operations, and the costs included in operational costs
  - Must be key factor in design and layout of the facility

# Financial Items



# Financial Items

---

## MRF and Local Recyclables Processing

- Lack of local capacity for processing
- Significant capital investment to restart AA MRF or establish new facility
- City of Ann Arbor volumes approximately half MRF capacity
  - Outside volumes needed for viable business case

## Potential restart

- Upcoming RFP procurement
  - Accepting proposals, though not required
- Potential Regional Authority



# Questions and Discussion

---

Thanks for your time and attention