



2 WEST
no scale



1 FRONT ENTRY
no scale

LEWIS GREENSPOON
ARCHITECTS LLC
440 s main, suite 2
ann arbor, mi 48104
734 . 786 . 3757
www.lg-architects.com

Waugh Residence

HDC application

529 6th Street, Ann Arbor MI 48103

23 JAN 2015

1

PHOTOS - EXISTING
project no. 14027



2 SOUTH-EAST
no scale



1 SOUTH
no scale

LEWIS GREENSPOON
ARCHITECTS LLC
440 s main, suite 2
ann arbor, mi 48104
734 . 786 . 3757
www.lg-architects.com

Waugh Residence

HDC application

529 6th Street, Ann Arbor MI 48103

23 JAN 2015

2

PHOTOS - EXISTING
project no. 14027



2 NORTH-WEST
no scale



1 NORTH-EAST
no scale

LEWIS GREENSPOON
ARCHITECTS LLC
440 s main, suite 2
ann arbor, mi 48104
734 . 786 . 3757
www.lg-architects.com

Waugh Residence

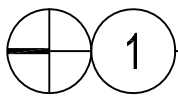
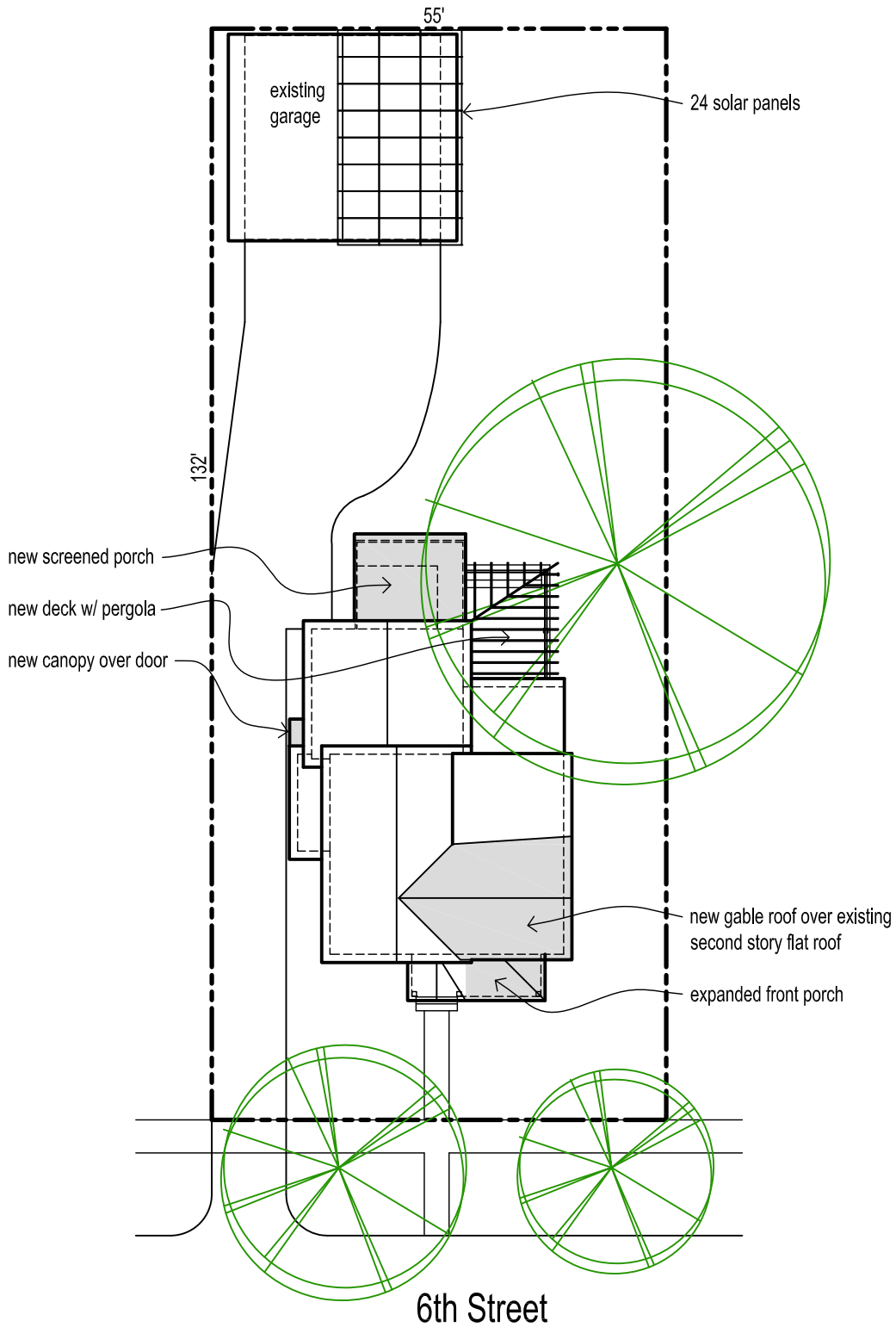
HDC application

529 6th Street, Ann Arbor MI 48103

23 JAN 2015

3

PHOTOS - EXISTING
project no. 14027



SITE PLAN - PROPOSED

1" = 20'-0"

LEWIS GREENSPOON
 ARCHITECTS LLC
 440 s main, suite 2
 ann arbor, mi 48104
 734 . 786 . 3757
 www.lg-architects.com

Waugh Residence

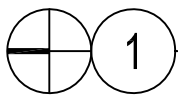
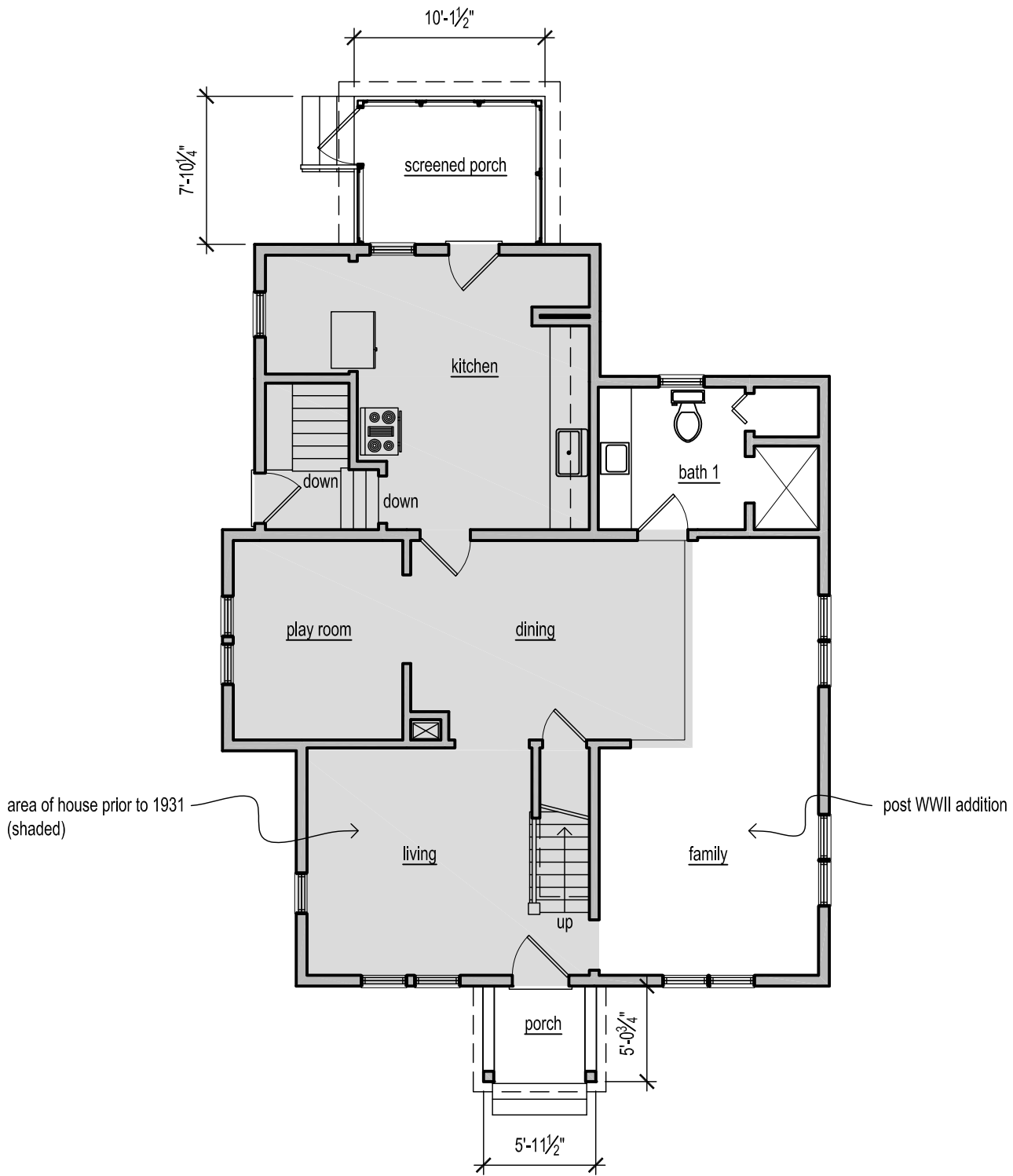
HDC application

529 6th Street, Ann Arbor MI 48103

23 JAN 2015

4

SITE PLAN
 project no. 14027



GROUND LEVEL FLOOR PLAN - EXISTING

1/8" = 1'-0"

LEWIS GREENSPOON
 ARCHITECTS LLC
 440 s main, suite 2
 ann arbor, mi 48104
 734 . 786 . 3757
 www.lg-architects.com

Waugh Residence

HDC application

529 6th Street, Ann Arbor MI 48103

23 JAN 2015

5

GROUND LEVEL - EXISTING
 project no. 14027



1 WEST ELEVATION - EXISTING
 1/8" = 1'-0"

LEWIS GREENSPOON
 ARCHITECTS LLC
 440 s main, suite 2
 ann arbor, mi 48104
 734 . 786 . 3757
 www.lg-architects.com

W a u g h R e s i d e n c e

H D C a p p l i c a t i o n

529 6th Street, Ann Arbor MI 48103

23 JAN 2015

6

WEST ELEV - EXISTING
 project no. 14027



1

SOUTH ELEVATION - EXISTING

1/8" = 1'-0"

LEWIS GREENSPOON
ARCHITECTS LLC
440 s main, suite 2
ann arbor, mi 48104
734 . 786 . 3757
www.lg-architects.com

W a u g h R e s i d e n c e

H D C a p p l i c a t i o n

529 6th Street, Ann Arbor MI 48103

23 JAN 2015

7

SOUTH ELEV - EXISTING
project no. 14027



1

EAST ELEVATION - EXISTING

1/8" = 1'-0"

LEWIS GREENSPOON
ARCHITECTS LLC
440 s main, suite 2
ann arbor, mi 48104
734 . 786 . 3757
www.lg-architects.com

W a u g h R e s i d e n c e

H D C a p p l i c a t i o n

529 6th Street, Ann Arbor MI 48103

2 3 J A N 2 0 1 5

8

EAST ELEV - EXISTING
project no. 14027



1

NORTH ELEVATION - EXISTING

1/8" = 1'-0"

LEWIS GREENSPOON
ARCHITECTS LLC
440 s main, suite 2
ann arbor, mi 48104
734 . 786 . 3757
www.lg-architects.com

W a u g h R e s i d e n c e

H D C a p p l i c a t i o n

529 6th Street, Ann Arbor MI 48103

23 JAN 2015

9

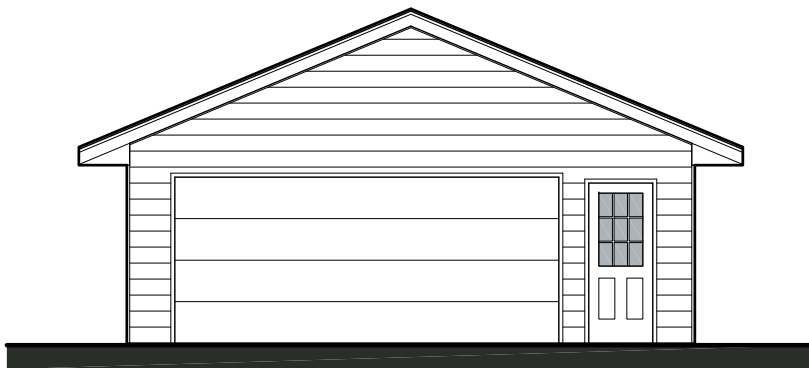
NORTH ELEV - EXISTING
project no. 14027



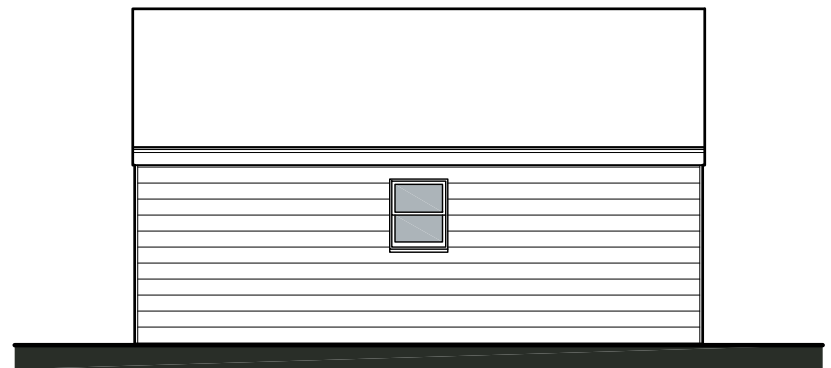
4 EAST ELEVATION - EXISTING
1/8" = 1'-0"



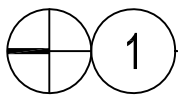
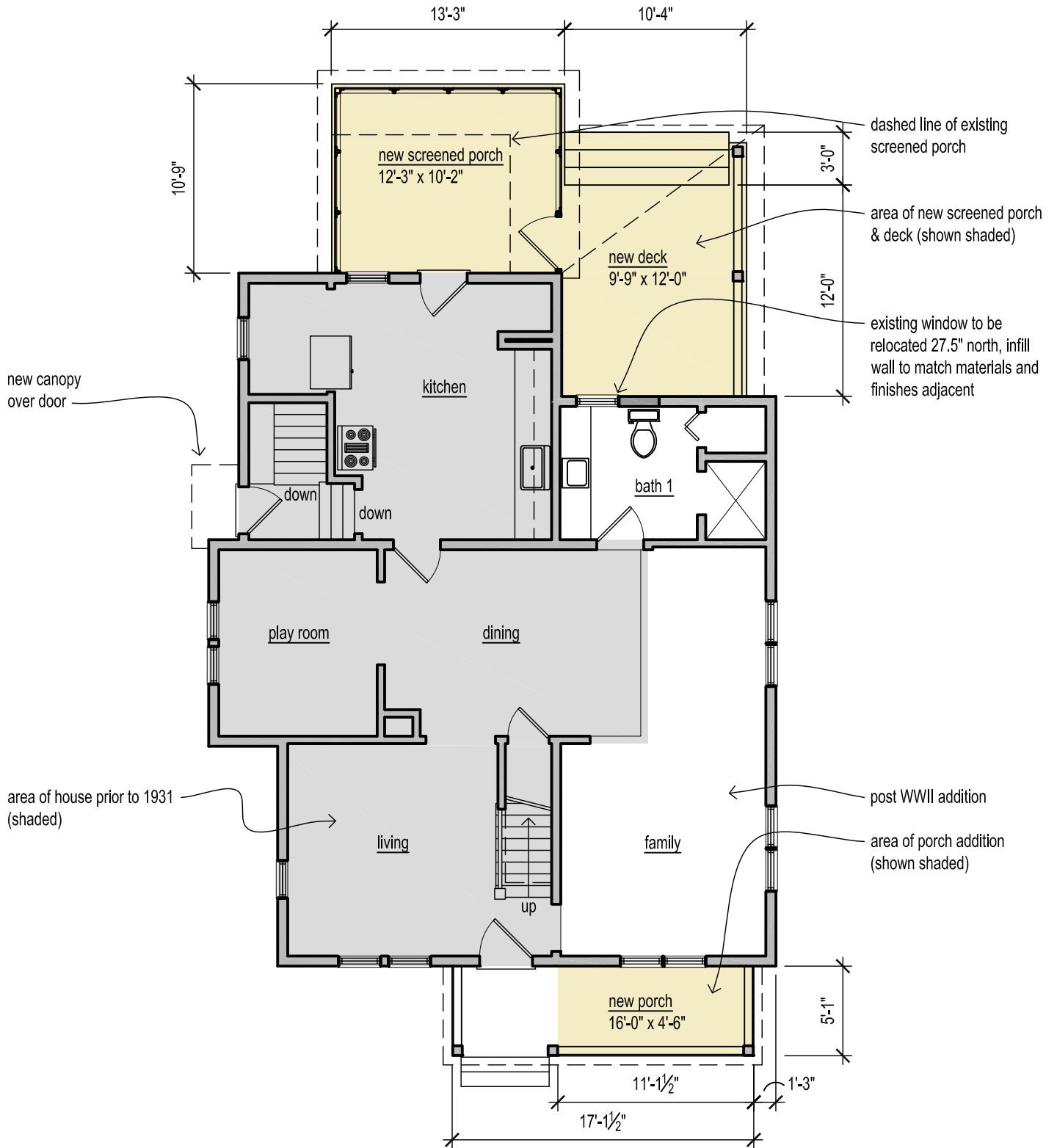
3 NORTH ELEVATION - EXISTING
1/8" = 1'-0"



2 WEST ELEVATION - EXISTING
1/8" = 1'-0"



1 SOUTH ELEVATION - EXISTING
1/8" = 1'-0"



GROUND LEVEL FLOOR PLAN - PROPOSED

1/8" = 1'-0"

LEWIS GREENSPOON
ARCHITECTS LLC
440 s main, suite 2
ann arbor, mi 48104
734 . 786 . 3757
www.lg-architects.com

Waugh Residence

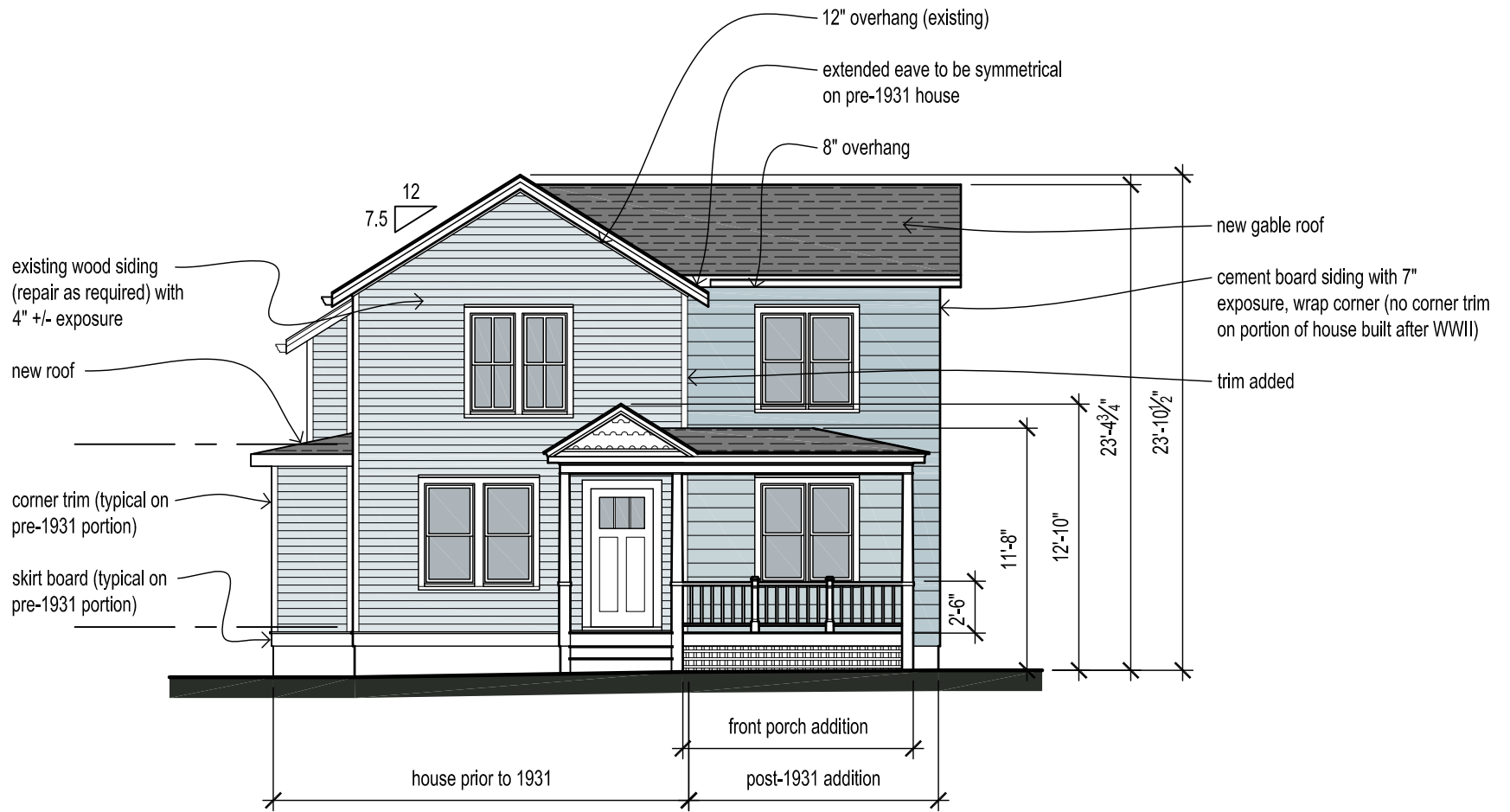
HDC application

529 6th Street, Ann Arbor MI 48103

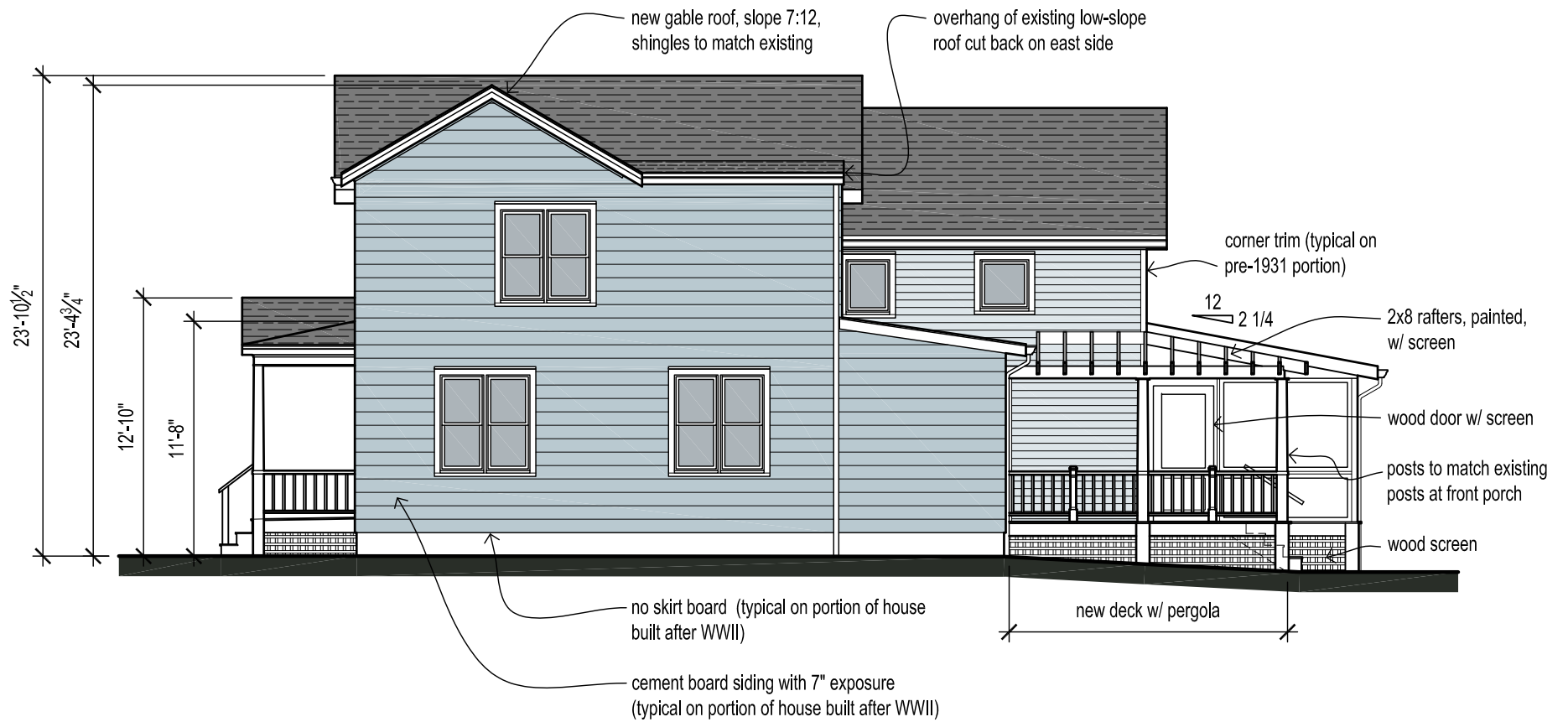
23 JAN 2015

11

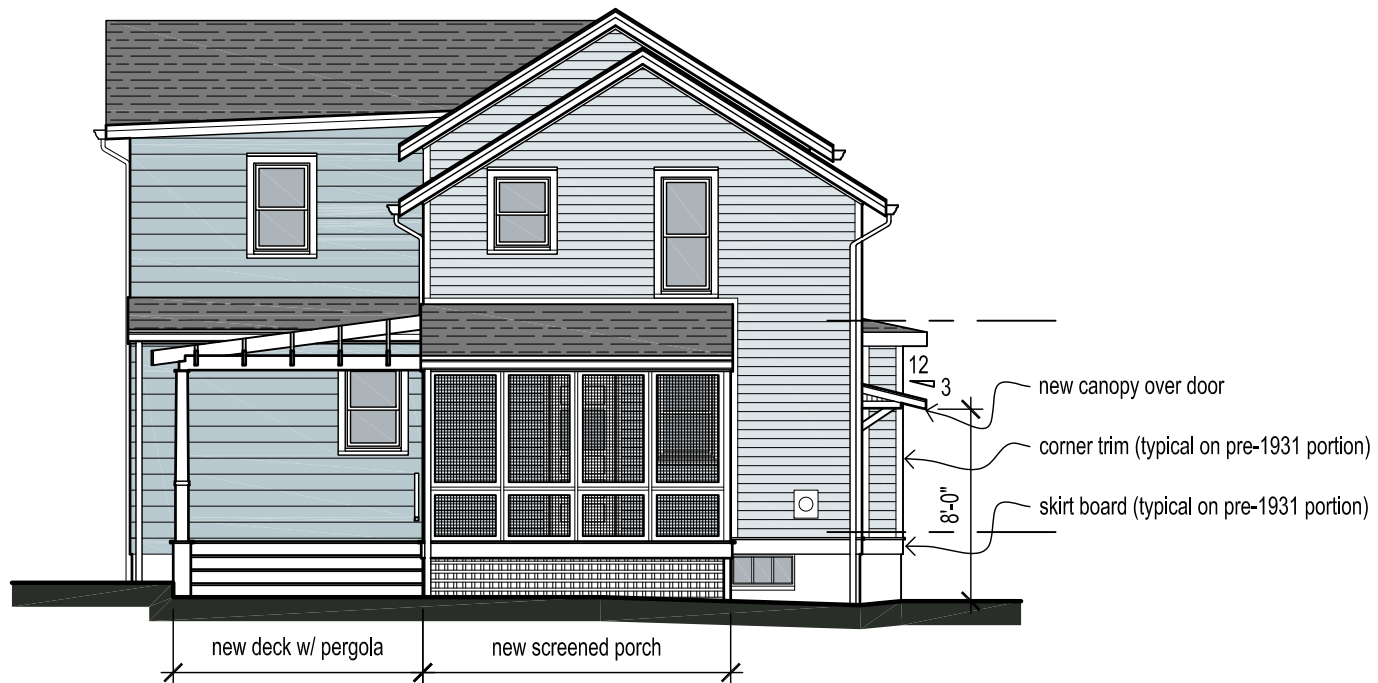
GROUND LEVEL - PROPOSED
project no. 14027



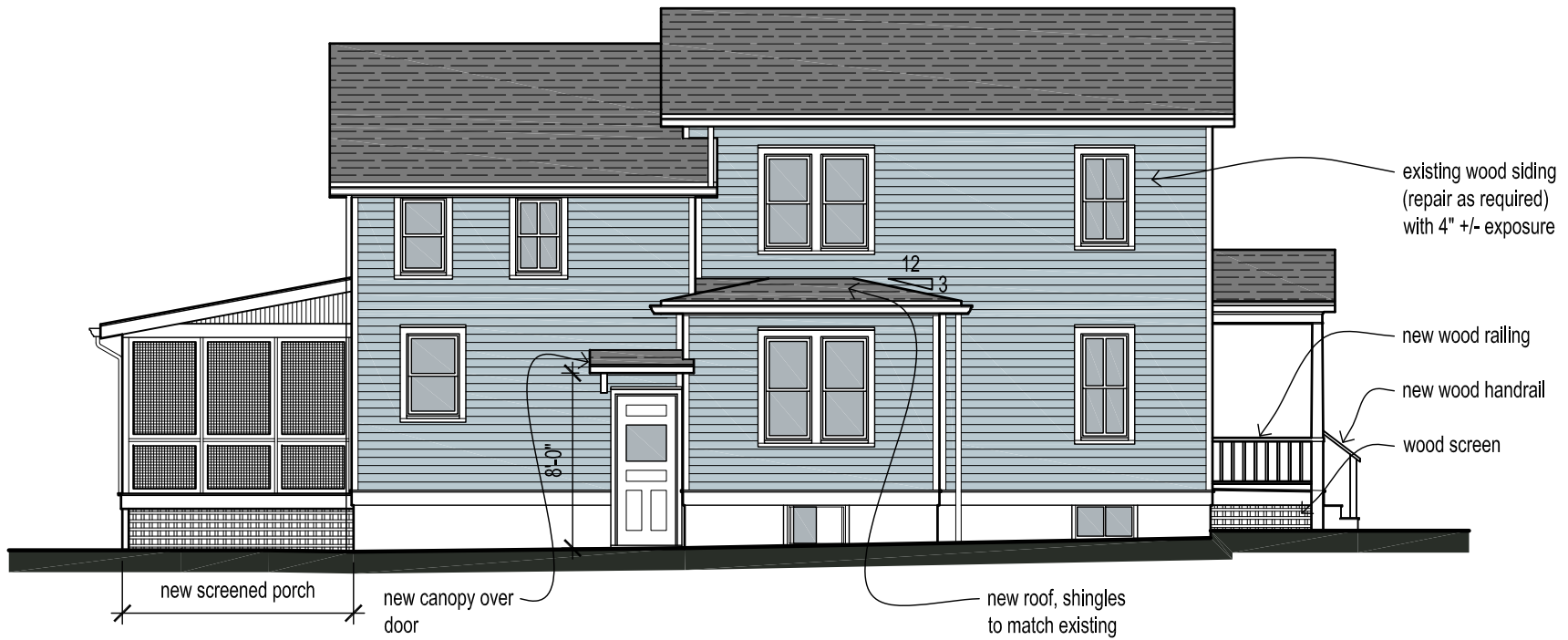
1 WEST ELEVATION - PROPOSED
 1/8" = 1'-0"



1 SOUTH ELEVATION - PROPOSED
 1/8" = 1'-0"



1 EAST ELEVATION - PROPOSED
1/8" = 1'-0"



1 NORTH ELEVATION - PROPOSED
 1/8" = 1'-0"

LEWIS GREENSPOON
 ARCHITECTS LLC
 440 s main, suite 2
 ann arbor, mi 48104
 734 . 786 . 3757
 www.lg-architects.com

Waugh Residence

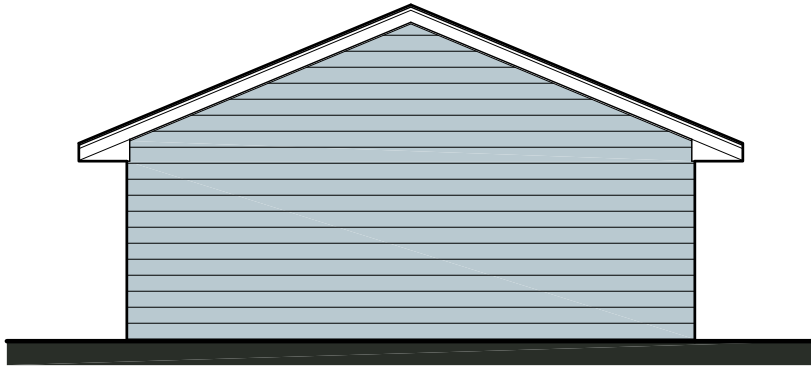
HDC application

529 6th Street, Ann Arbor MI 48103

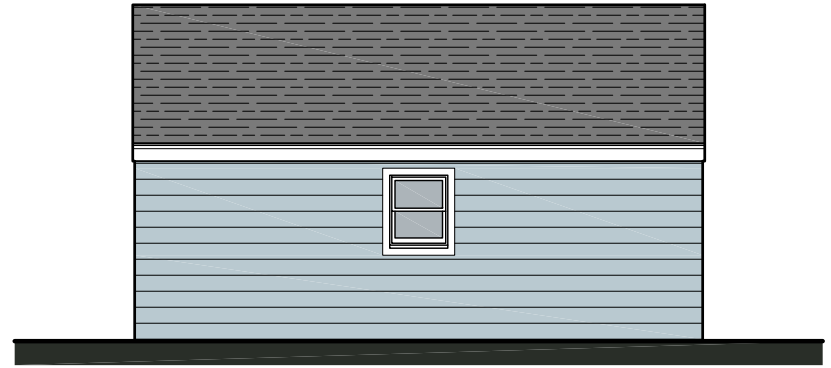
23 JAN 2015

15

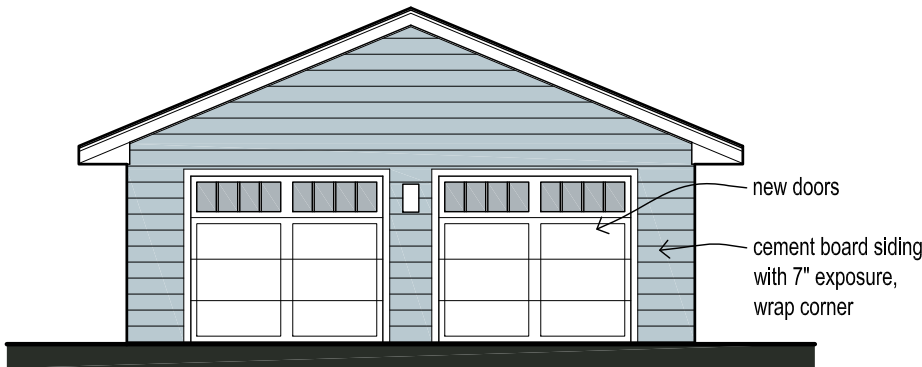
NORTH ELEV - PROPOSED
 project no. 14027



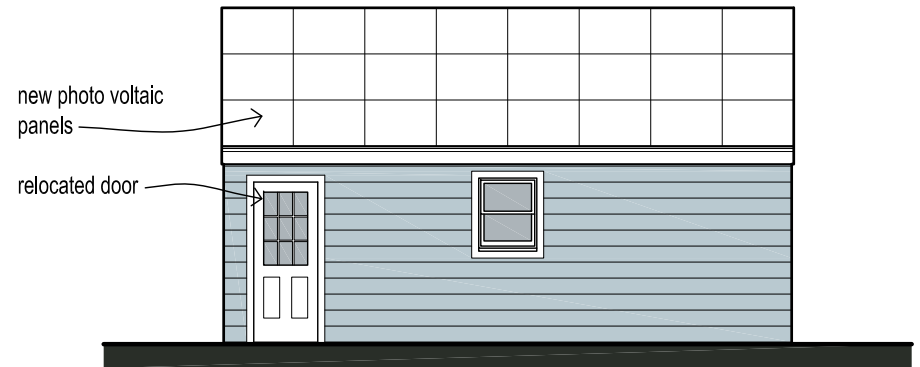
4 EAST ELEVATION - PROPOSED
1/8" = 1'-0"



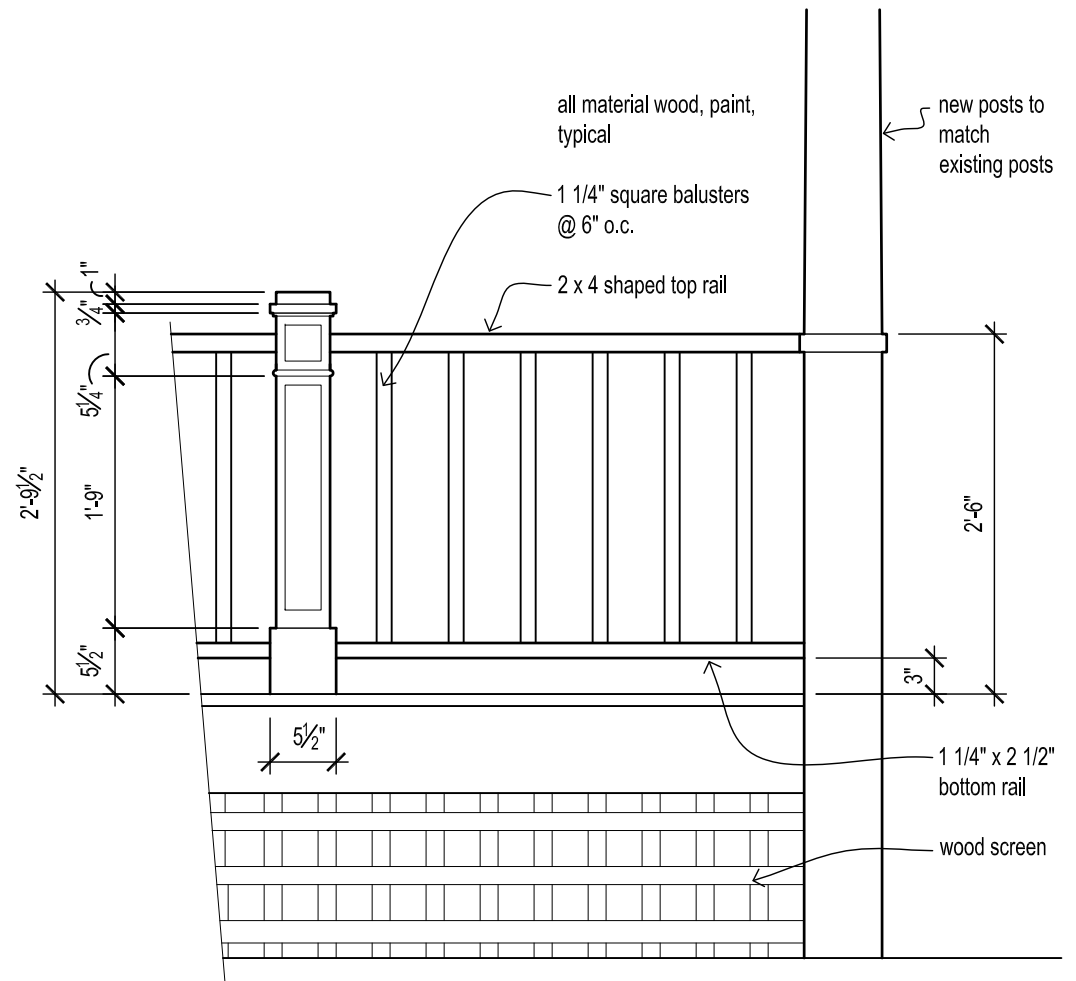
3 NORTH ELEVATION - PROPOSED
1/8" = 1'-0"



2 WEST ELEVATION - PROPOSED
1/8" = 1'-0"



1 SOUTH ELEVATION - PROPOSED
1/8" = 1'-0"



1 RAILING DETAIL
3/4" = 1'-0"



1

VIEW OF PROPOSED FRONT PORCH

no scale

LEWIS GREENSPOON
ARCHITECTS LLC
440 s main, suite 2
ann arbor, mi 48104
734 . 786 . 3757
www.lg-architects.com

Waugh Residence

HDC application

529 6th Street, Ann Arbor MI 48103

23 JAN 2015

18

PROPOSED
project no. 14027



1

VIEW OF PROPOSED BACK PORCH & DECK

no scale

LEWIS GREENSPOON
ARCHITECTS LLC
440 s main, suite 2
ann arbor, mi 48104
734 . 786 . 3757
www.lg-architects.com

Waugh Residence

HDC application

529 6th Street, Ann Arbor MI 48103

23 JAN 2015

19

PROPOSED
project no. 14027

HardiePlank® Lap Siding

Sleek and strong, HardiePlank lap siding is not just our best-selling product – it's the most popular brand of siding in America.

With a full spectrum of colors and textures, homeowners can enjoy protection from the elements and the versatility to make their dream home a reality. From Victorians to Colonials, HardiePlank lap siding sets the standard in exterior cladding.

PREV
SECTION



A classic look for
THE HOME OF THEIR DREAMS.



[ABOUT JAMES HARDIE](#)

[PRODUCTS](#)

[COLOR](#)

● HardiePlank® Lap Siding

HardiePanel® Vertical Siding

HardieShingle® Siding



SMOOTH

Countrylane Red

Thickness	5/16 in.					
Length	12 ft. planks					
Width	5.25 in.	6.25 in.	7.25 in.	8.25 in.	9.25 in*	12 in.**
Exposure	4 in.	5 in.	6 in.	7 in.	8 in.	10.75 in.
ColorPlus Pcs./Pallet	324	280	252	210		
Prime Pcs./Pallet	360	308	252	230	190	152
Pcs./Sq.	25.0	20.0	16.7	14.3	12.5	9.3

Available Colors



[View all HardiePlank Lap Siding Products](#)

*9.25 in. only available primed.
**12 in. only available primed and in select areas.



255/6 PL US-AC PHOTOVOLTAIC MODULE

25% More Energy For Less Costs

- › Producing up to 25% more energy than alternative systems
- › Industry leading 30 year, 80% power guarantee on module encompassing attached micro-inverter
- › Reduces upfront costs by eliminating costly inverters, installation material and complex system designs

Easier, Faster, Safer

- › Plug and Play - simplifies installation process
- › Faster installation - saving you time and money
- › Safer installation and ownership by eliminating the danger of high voltage DC

Module Level Energy Monitoring

- › Web-based management system for 24/7 monitoring
- › Monitor real-time operating performance of every AC module

Flexible Design

- › Ideal for homes, small businesses, parking canopies, etc.
- › Suitable for any rooftop - even complex or shaded
- › Increase your system size when you want it, when you need it – module by module

Number of Cells: 60
Solar Cell Type: polycrystalline
Power class: 255 Wp

Why Choose
MAGE SOLAR USA

30 year
power guarantee

10 year
product warranty

Lowest
cost of power

MAGE SOLAR USA is synonymous with the integration of quality excellence, client proximity, and reliability in the solar industry. Ranked No. 2 most trusted service provider for installers in the U.S. (North American EV EPC Monitor 2013©), MAGE SOLAR USA's robust product line of premium quality, high performance modules include US-assembled and ARRA-compliant modules as well as market pioneering ACPV models. Featuring an industry-best 30-year power guarantee, MAGE SOLAR USA products distinguish themselves by providing end users one of the finest "Cost of Energy" propositions in solar.

255/6 PL US-AC PHOTOVOLTAIC MODULE

AC ELECTRICAL CHARACTERISTICS

AC Output Rating	208 V	240 V
AC Output Voltage (Min/Nom/Max)	183 V / 208 V / 229 V	211 V / 240 V / 264 V
Oper Freq Hz (Min/Nom/Max)	59.3 / 60.0 / 60.5	
Output Power Factor	0.99 min	
AC Max Cont Output Current	1.14 A	0.992 A
AC Max Cont Output Power	238W	
Max Units Per Branch Circuit	24(3 Pole) or 14(2 Pole)	16
Max Overcurrent Protection	20 A	
Total Harmonic Distortion	< 5%	

DC ELECTRICAL CHARACTERISTICS*

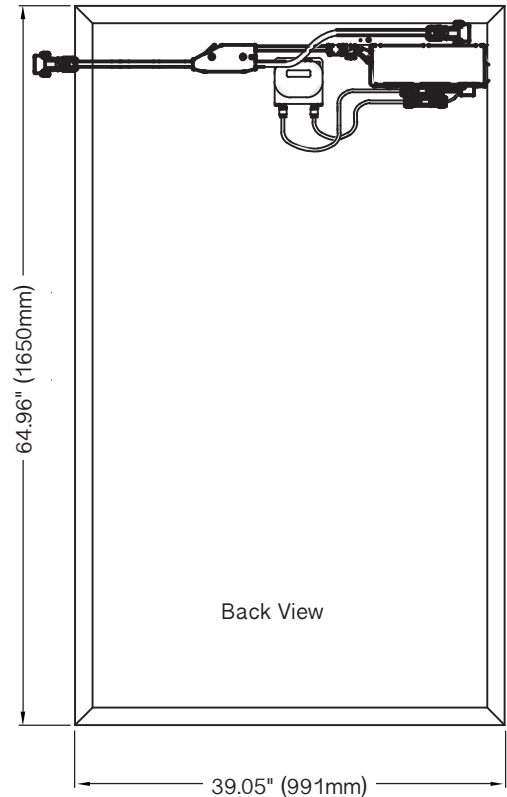
Maximum Power Rating	P _{max} [Wp]	255
Power Tolerance	[Wp]	-0/+5
Module Efficiency	n _m [%]	15.6

DC THERMAL CHARACTERISTICS

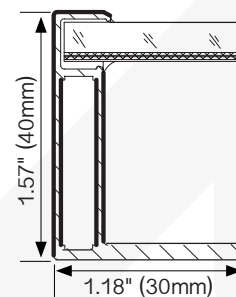
NOCT	[°C]	+ 45 ±2
Temperature Coefficient	I _{sc} [%/°C]	+ 0.053
Temperature Coefficient	V _{oc} [%/°C]	- 0.334
Temperature Coefficient	P _{mp} [%/°C]	- 0.440

TECHNICAL FACTS

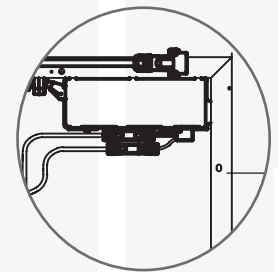
Number of Cells [Matrix]	60 [6 x 10]
Solar Cell Type	polycrystalline, 3 Bus Bar
Solar Cell Size [mm]	156 x 156
Solar Cell Size [in]	6 x 6
Dimensions LxWxH [mm]	1650 x 991 x 40
Dimensions LxWxH [in]	64.96 x 39.05 x 1.57
Weight [kg]	21.3
Weight [lbs]	47.0
Module Efficiency [%]	15.6
Solar Glass	Anti-reflective, low iron, tempered glass 3.2 mm (AR-coating)
Frame	Extruded & Anodized Aluminum Profile
Junction Box	IP Rated Enclosure, 3 Diodes
Certifications	UL 1703, ULC/ORD C-1703, IEC 61215, IEC 61730



Frame Cross-Section



Attached Micro-inverter



Power specification under standard test conditions (STC): Irradiance of 1000 W/m², spectrum AM of 1.5, and module temperature of 25°C. All MAGE SOLAR USA modules undergo flash testing and are sorted by power class and other specifications as required.

www.MageSolarUSA.com



CEC Certified



US-Assembled

1-844-624-3872 / 844-MAGE-USA

©MAGE SOLAR USA 10/2014 - All rights reserved. Specifications included in this datasheet are subject to change without notice. Products may not be applicable for all areas. Image may not represent actual module.