

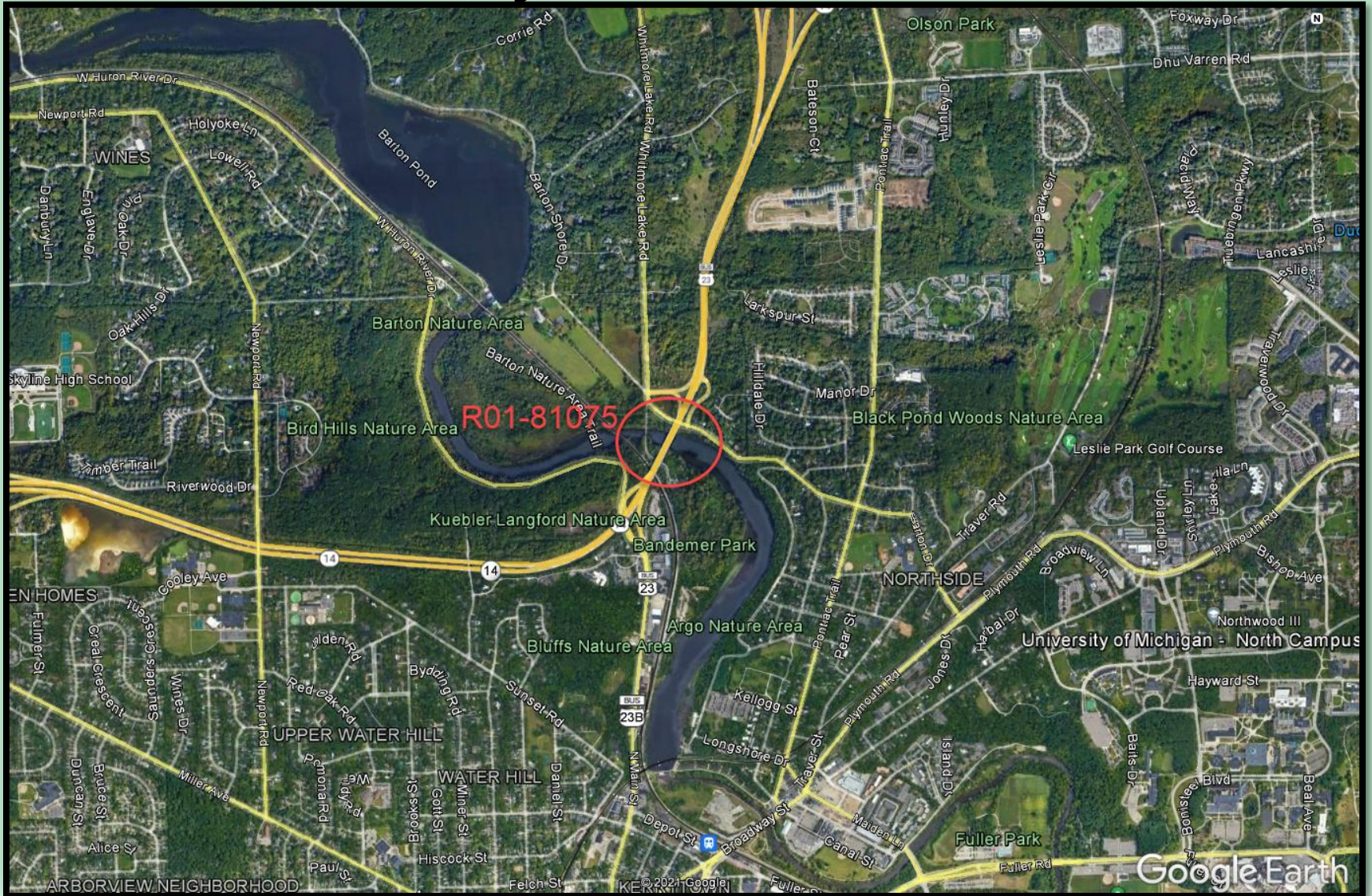
# M-14 & BUS 23 over Huron River Bridge Rehabilitation



Impacts to Parks

May 2022 – October 2022

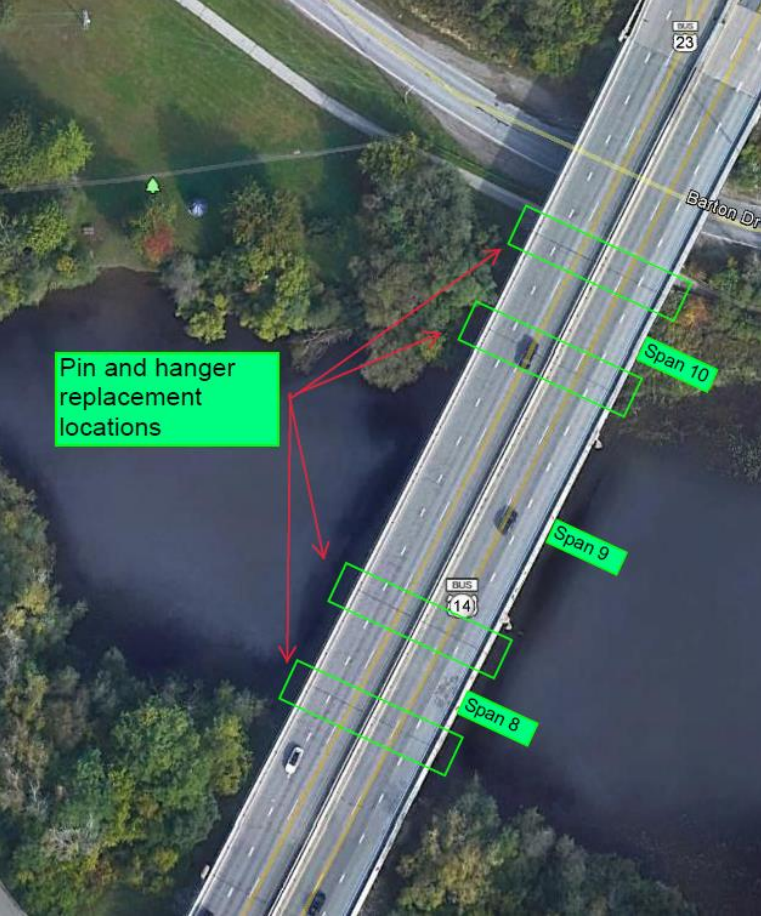
# Project Location





# Project Goals

- Pin and hanger replacement
- Bearing replacement
- High friction surface coating (WB M-14 Bridge)
- Substructure patching



Existing  
Conditions







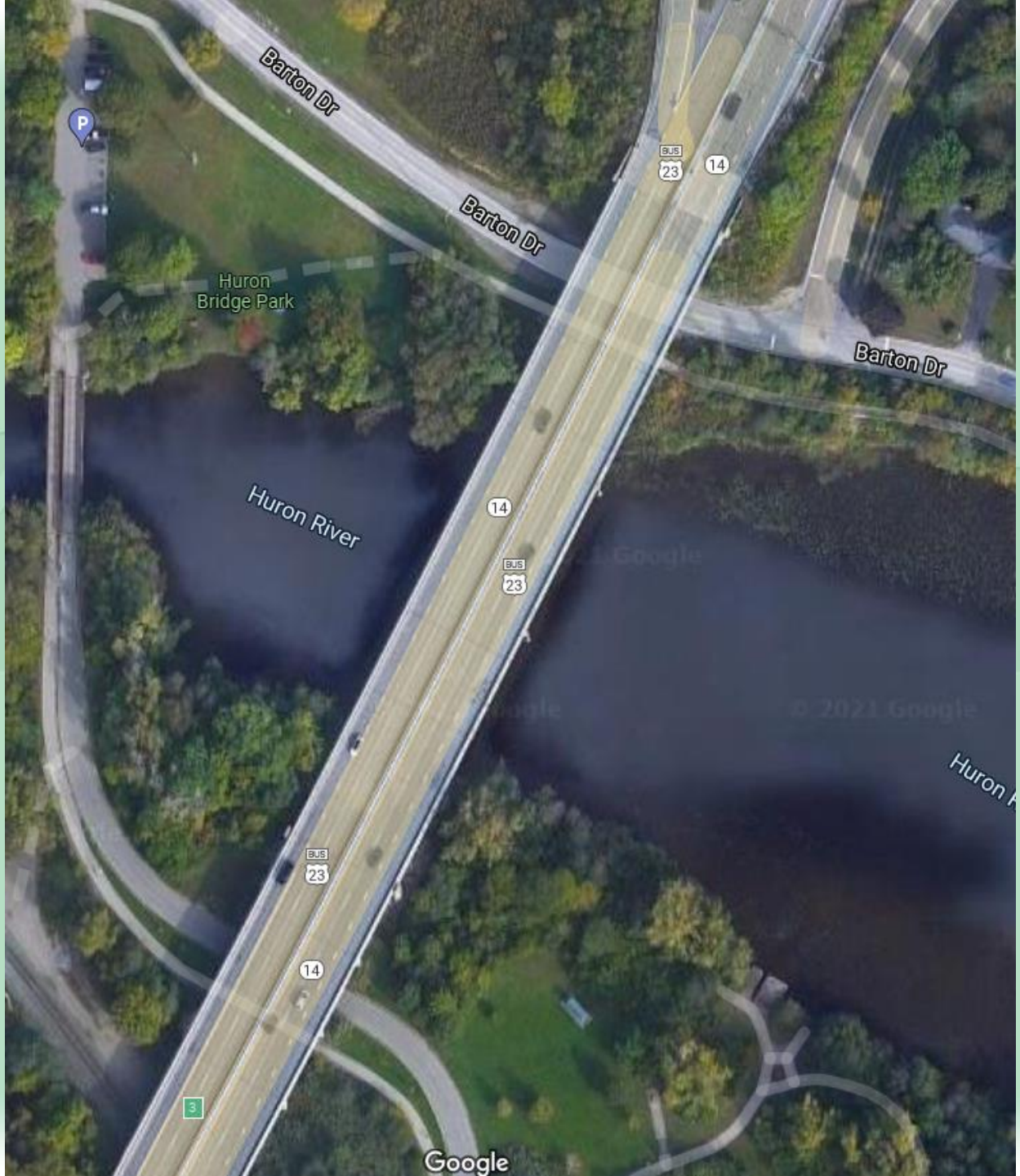
# Trail and Park Contractor Restrictions

- Park facilities will be video taped prior to construction.
- Always maintain pedestrian access underneath Ro1 both at the north and south sides of the Huron River.
- Close EB right shoulder of Barton Drive and re-route river trail to north side of pier.
- Contractor is allowed 1 day for hand chipping pier near Barton with 15 min intermittent closures.

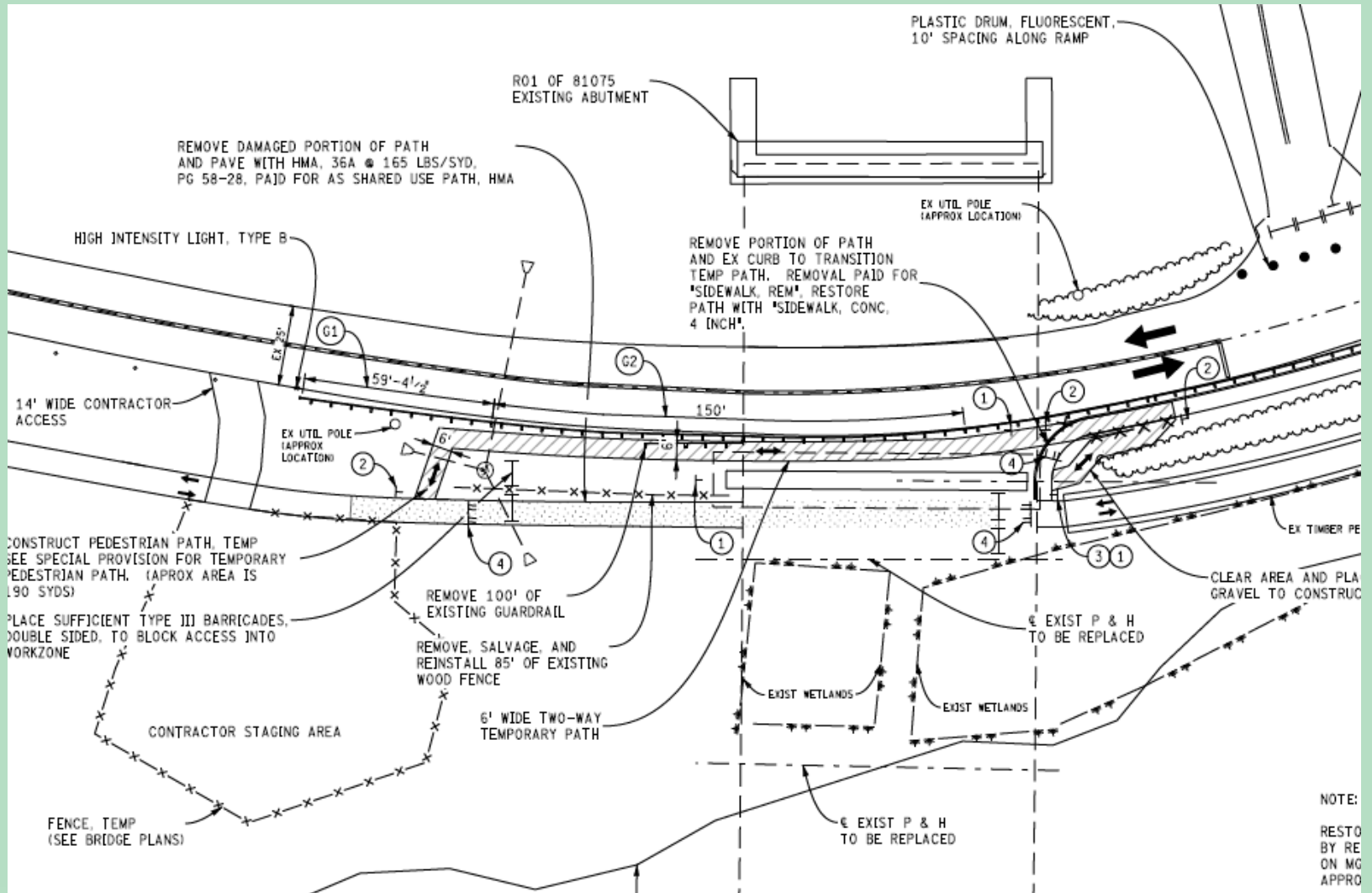
# Trail and Park Contractor Restrictions

- Clean path after each use of the contractor access drive.
- Repair damaged portions of the river trail
- Always maintain park access from Lake Shore Drive.
- No restrictions on river traffic.
- Use of the wooden bridge west of Ro1 is prohibited.





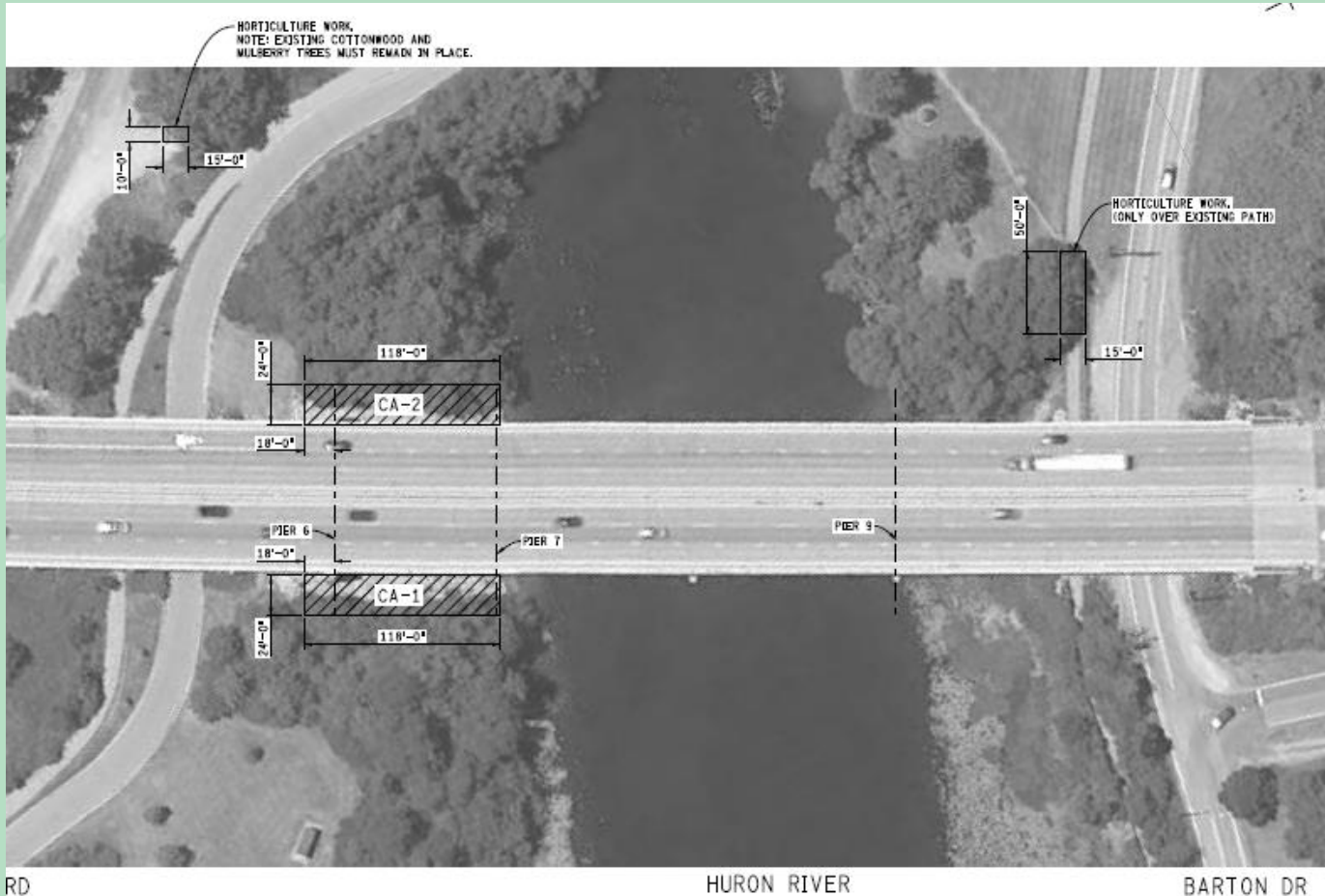
# Ped Path under Barton Dr







# Impacts to Vegetation



SHEET

REAS

|      | CLEARING |
|------|----------|
| CA-1 | 315 SYD  |
| CA-2 | 315 SYD  |

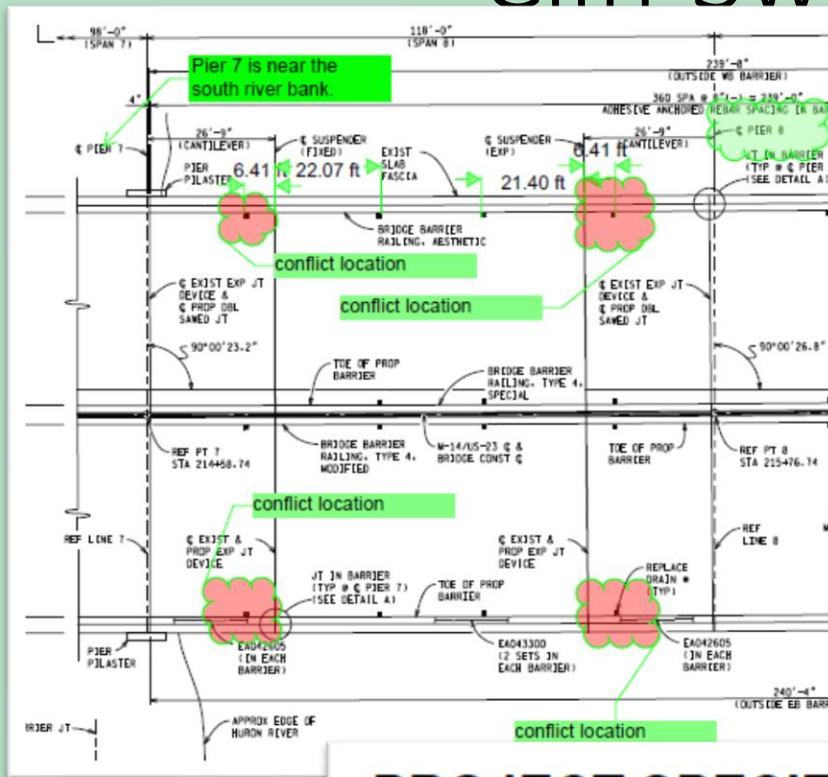
| MISCELLANEOUS QUANTITIES |      |                              |
|--------------------------|------|------------------------------|
| TOTAL                    | UNIT | DESCRIPTION                  |
| Δ 630                    | Syd  | Clearing, Special            |
| Δ 1                      | Eq   | Tree, Rem, 6 inch to 18 inch |
| Δ 1                      | Eq   | Quercus bicolor, 2 inch      |
| Δ 16                     | Hr   | Horticultural Work           |

Δ THIS ITEM IS IN CATEGORY 0001 IN THE PROPOSAL.

## NOTES:

NO CLEARING OR TREE REMOVAL WHERE CALLED FOR ON THIS SHEET.

# Cliff Swallows



## **PROJECT SPECIFIC NOTES**

Do not remove existing cliff swallow nests under the bridge deck.

Pin and hanger replacement and associated temporary support installation must not begin in Span 8 until after July 22 so nesting cliff swallows are not disturbed. From July 23 to August 15 pin and hanger replacement in Span 8 may proceed only for the girders under the median barrier. See the Special Provision for Migratory Bird Protection for additional restrictions.

