

LEGEND

Front Elevation (East)

S1

Site Plan - Overview

Project No. 7274
 Project Burlington Signage Package
 Location 215 N Maple Rd,
 Ann Arbor, MI 48103

Orig. Draft 02.22.2022
 Project Mgr. N/A
 Designer IDV
 Rev. Art N/A
 Rev. Date 00.00.00
 Page Rev. 000
 Rev. Details N/A

This sign design is exclusive property of Identiti Resources, LTD., and is the result of the original and creative work of it's employees. This drawing is submitted to the customer for the sole purpose of purchase of the design or signage manufactured to this design, by Identiti Resources, LTD. Distribution to or use of this sign design by anyone outside of the customer's organization, without expressed, written authorization by Identiti Resources, LTD. is prohibited.

IDENTITI
 425 N Martingale Rd
 18th Floor
 Schaumburg, IL 60173
 Office 847.301.0510
 identiti.net



Front Store Elevation

S1-1

Proposed Signage = 297.6 SF

Relevant Signage Code

Site allowance for all signage is 2 x frontage, NTE 200 sq ft.

Sign Type

LED Channel Letters
Front-Lit

Mounting

Flush Mounted

Color Palette

- Face: White Acrylic
- Trim Cap & Returns: Black
- Tagline Face: White Acrylic
- Tagline Trim Cap & Returns: Black

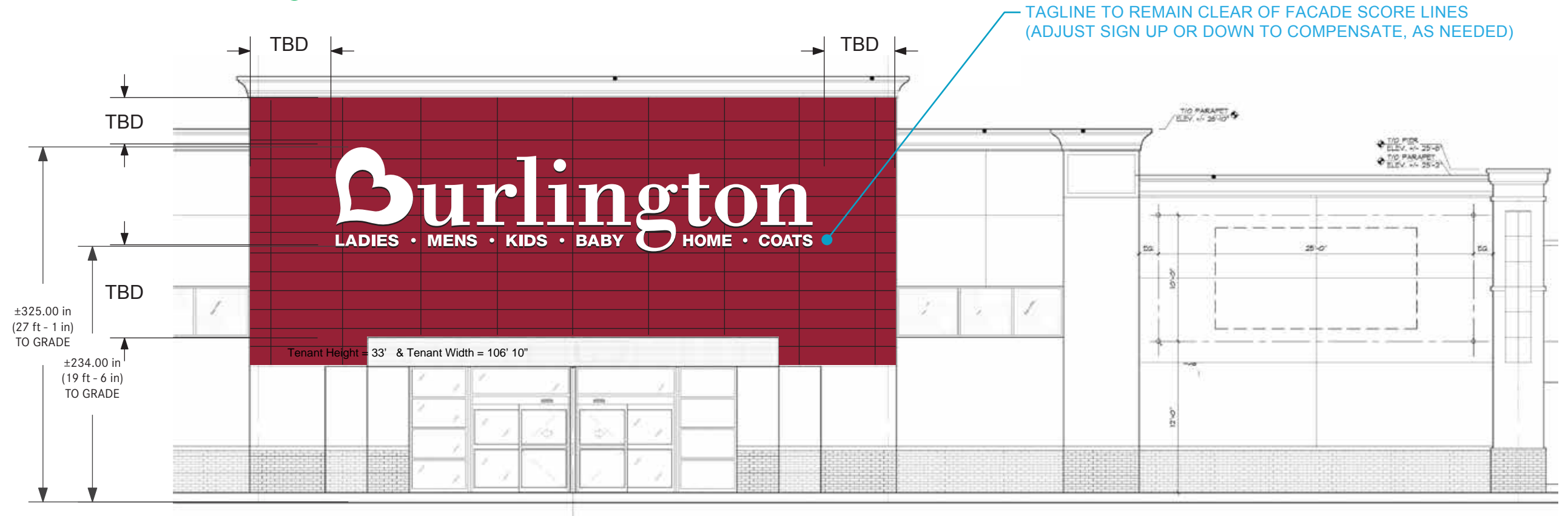
Project No. 7274
 Project Burlington Signage Package
 Location 215 N Maple Rd,
 Ann Arbor, MI 48103

Orig. Draft 02.22.2022
 Project Mgr. N/A
 Designer IDV
 Rev. Art MM
 Rev. Date 11.21.2022
 Page Rev. 006
 Rev. Details 72" sign

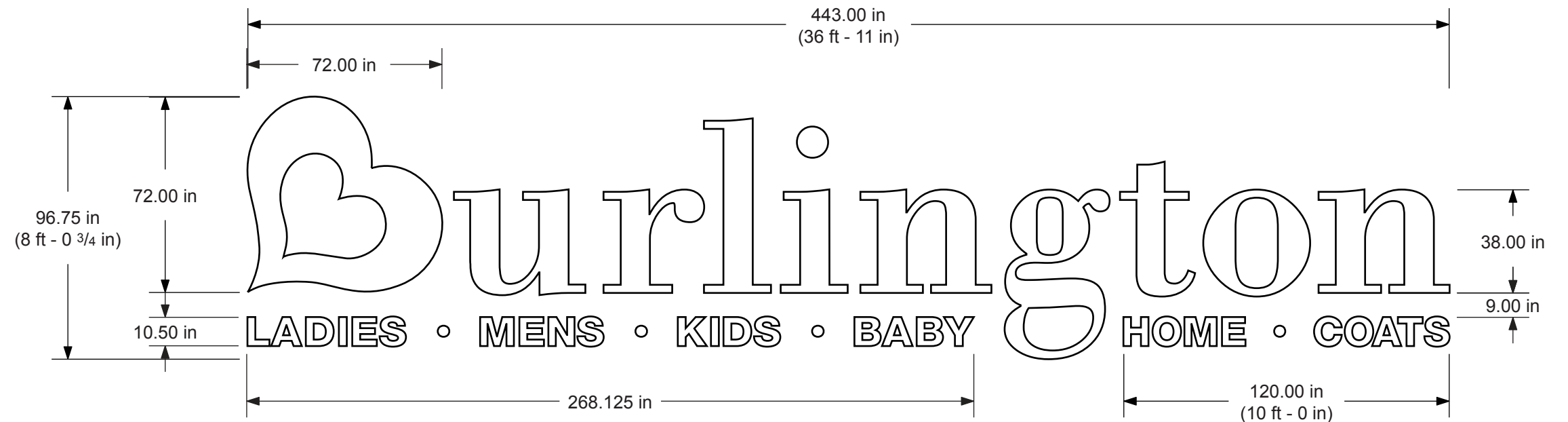
This sign design is exclusive property of Identiti Resources, LTD., and is the result of the original and creative work of its employees. This drawing is submitted to the customer for the sole purpose of purchase of the design or signage manufactured to this design, by Identiti Resources, LTD. Distribution to or use of this sign design by anyone outside of the customer's organization, without expressed, written authorization by Identiti Resources, LTD. is prohibited.

IDENTITI
 425 N Martingale Rd
 18th Floor
 Schaumburg, IL 60173
 Office 847.301.0510
 identiti.net

Tenant Height = 33' & Tenant Width = 106' 10"



RENDER IS AN ESTIMATION
 ALL DIMENSIONS AND SITE CONDITIONS TO BE VERIFIED BY FIELD SURVEY AND APPROVED BY BURLINGTON PRIOR TO INSTALLATION.



SPEC-84" Main

Proposed Signage = N/A

Relevant Signage Code
N/A

Sign Type
LED Channel Letters
Front-Lit

Mounting
Flush Mounted

Color Palette
 Face: White Acrylic
 Trim Cap & Returns: Black

Project No. 7274
 Project Burlington Signage Package
 Location 215 N Maple Rd,
 Ann Arbor, MI 48103

Orig. Draft 02.22.2022
 Project Mgr. N/A
 Designer IDV
 Rev. Art N/A
 Rev. Date 00.00.00
 Page Rev. 000
 Rev. Details N/A

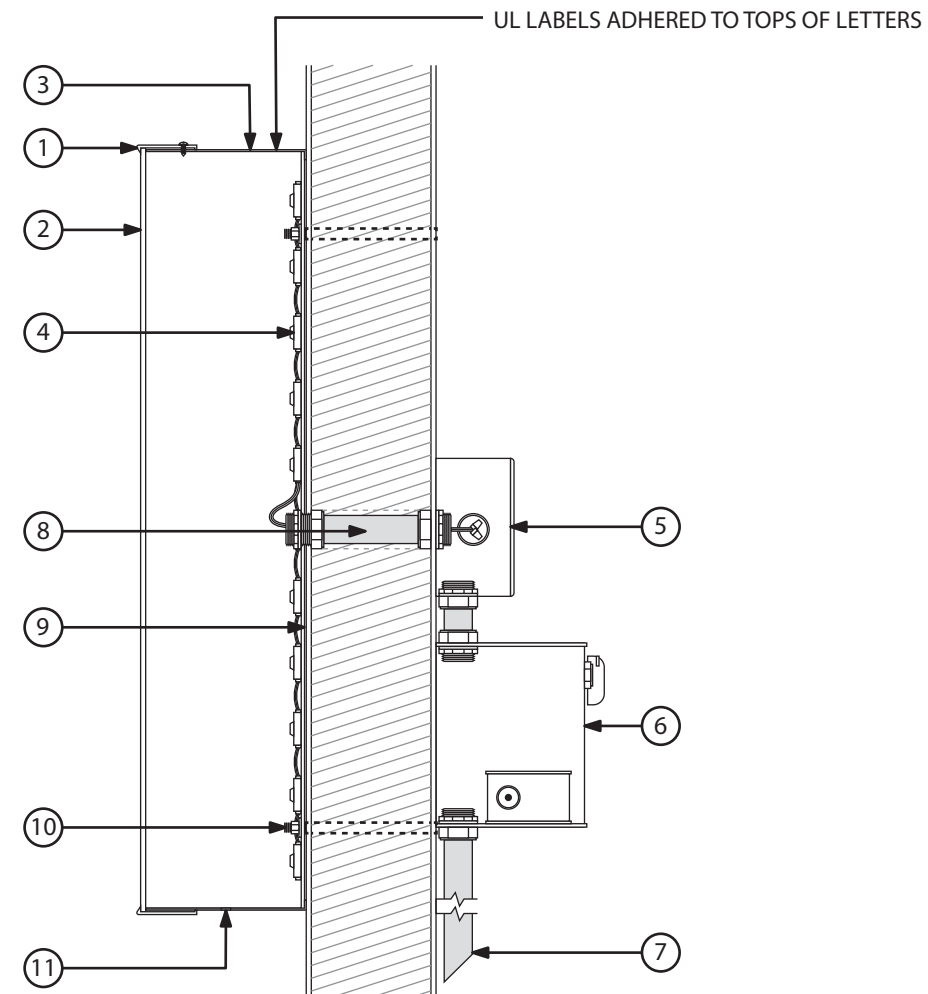
This sign design is exclusive property of Identiti Resources, LTD., and is the result of the original and creative work of it's employees. This drawing is submitted to the customer for the sole purpose of purchase of the design or signage manufactured to this design, by Identiti Resources, LTD. Distribution to or use of this sign design by anyone outside of the customer's organization, without expressed, written authorization by Identiti Resources, LTD. is prohibited.

Burlington



"B" LOGO	
1	2" TRIM CAP: (WITH JEWELITE WASHER HEAD PHILLIPS SCREWS) PAINTED BLACK
2	3/16" LEXAN PANEL: WHITE
"urlington" LETTERS	
1	1" TRIM CAP: (WITH JEWELITE WASHER HEAD PHILLIPS SCREWS) PAINTED BLACK
2	3/16" ACRYLIC #7328: WHITE
IDENTICAL SPECIFICATIONS	
3	0.063 ALUMINUM RETURNS (5" DEPTH): PAINTED BLACK SATIN FINISH
4	LED UNITS: SLOAN PRISM WHITE
5	UL LISTED HOUSING: SECONDARY WIRING SPLICE POINT (WHEN NEEDED)
6	UL HOUSING W/ PWR SUPPLY (QTY VARIES) DISCONNECT SWITCH FOR DEDICATED PRIMARY POWER CIRCUIT
7	PRIMARY POWER CIRCUIT (PROVIDED/PERMITTED BY OTHERS) TO BE PLACED WITHIN 5 FEET OF CENTER OF SIGN
8	CONDUIT: SECONDARY ELECTRICAL RUN (WHEN NEEDED)
9	0.063 ALUMINUM BACK: PRECOAT WHITE FINISH
10	MOUNTING HARDWARE: STEEL KNURLED FLANGED RIVET NUT 0.805" L, 1/4"-18 DIA./THREAD SIZE W/ NUTS, WASHERS AND THREADED ROD
11	WEEP HOLES

ALL LETTERS TO HAVE 10' WHIPS



A3 LETTER SECTION
SCALE: N.T.S.

SPEC-Tagline

Proposed Signage = N/A

Relevant Signage Code
N/A

Sign Type
LED Channel Letters
Front-Lit

Mounting
Flush Mounted

Color Palette

- Face: White Acrylic
- Tagline Trim Cap & Returns: Black

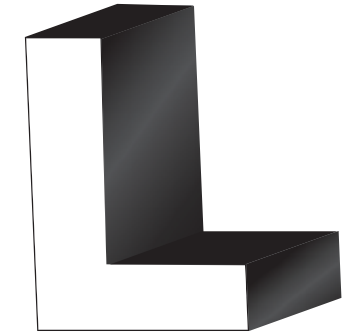
Project No. 7274
Project Burlington Signage Package
Location 215 N Maple Rd,
Ann Arbor, MI 48103

Orig. Draft 02.22.2022
Project Mgr. N/A
Designer IDV
Rev. Art N/A
Rev. Date 00.00.00
Page Rev. 000
Rev. Details N/A

This sign design is exclusive property of Identiti Resources, LTD., and is the result of the original and creative work of it's employees. This drawing is submitted to the customer for the sole purpose of purchase of the design or signage manufactured to this design, by Identiti Resources, LTD. Distribution to or use of this sign design by anyone outside of the customer's organization, without expressed, written authorization by Identiti Resources, LTD. is prohibited.

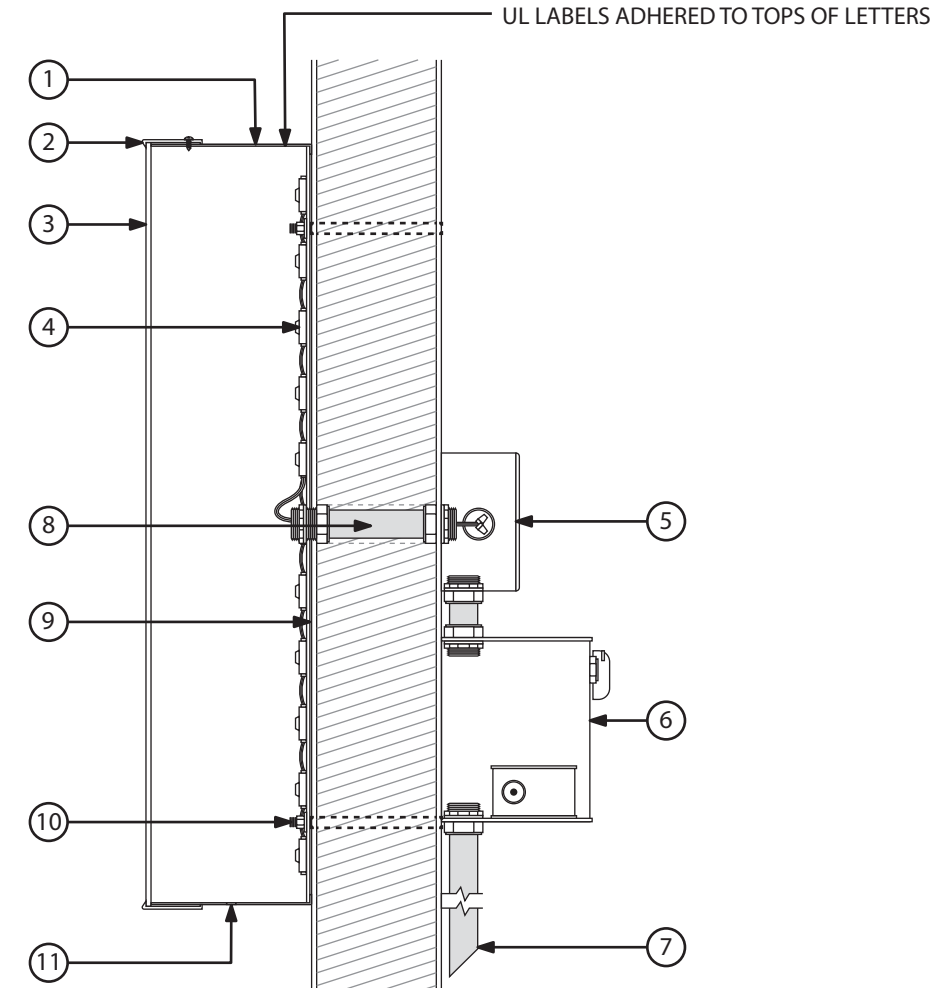
LADIES • MENS • KIDS • BABY

HOME • COATS



LETTERSET SPECIFICATIONS	
1	0.063 ALUMINUM RETURNS (3" DEPTH): PAINTED BLACK
2	1" TRIM CAP: (WITH JEWELITE WASHER HEAD PHILLIPS SCREWS) PAINTED BLACK
3	LEXAN PANEL: WHITE FACES
4	LED UNITS: WHITE
5	UL LISTED HOUSING: SECONDARY WIRING SPLICE POINT (WHEN NEEDED)
6	UL HOUSING W/ PWR SUPPLY (QTY VARIES) DISCONNECT SWITCH FOR DEDICATED PRIMARY POWER CIRCUIT
7	PRIMARY POWER CIRCUIT (PROVIDED/PERMITTED BY OTHERS) TO BE PLACED WITHIN 5 FEET OF CENTER OF SIGN
8	CONDUIT: SECONDARY ELECTRICAL RUN (WHEN NEEDED)
9	0.063 ALUMINUM BACK: PRECOAT WHITE FINISH
10	MOUNTING HARDWARE: VARIES ON FACADE TYPE AND SUPPORT STRUCTURE
11	WEEP HOLES

ALL LETTERS TO HAVE 10' WHIPS



A3 LETTER SECTION
SCALE: N.T.S.

LEGEND

Front Elevation (East)

S1

Site Plan - Overview

Project No. 7274
Project Burlington Signage Package
Location 215 N Maple Rd,
Ann Arbor, MI 48103

Orig. Draft 02.22.2022
Project Mgr. N/A
Designer IDV
Rev. Art N/A
Rev. Date 00.00.00
Page Rev. 000
Rev. Details N/A

This sign design is exclusive property of Identiti Resources, LTD., and is the result of the original and creative work of it's employees. This drawing is submitted to the customer for the sole purpose of purchase of the design or signage manufactured to this design, by Identiti Resources, LTD. Distribution to or use of this sign design by anyone outside of the customer's organization, without expressed, written authorization by Identiti Resources, LTD. is prohibited.



425 N Martingale Rd
18th Floor
Schaumburg, IL 60173
Office 847.301.0510
identiti.net



Front Store Elevation

S1-1

Proposed Signage = 297.6 SF

Relevant Signage Code

Site allowance for all signage is 2 x frontage, NTE 200 sq ft.

Sign Type

LED Channel Letters
Front-Lit

Mounting

Flush Mounted

Color Palette

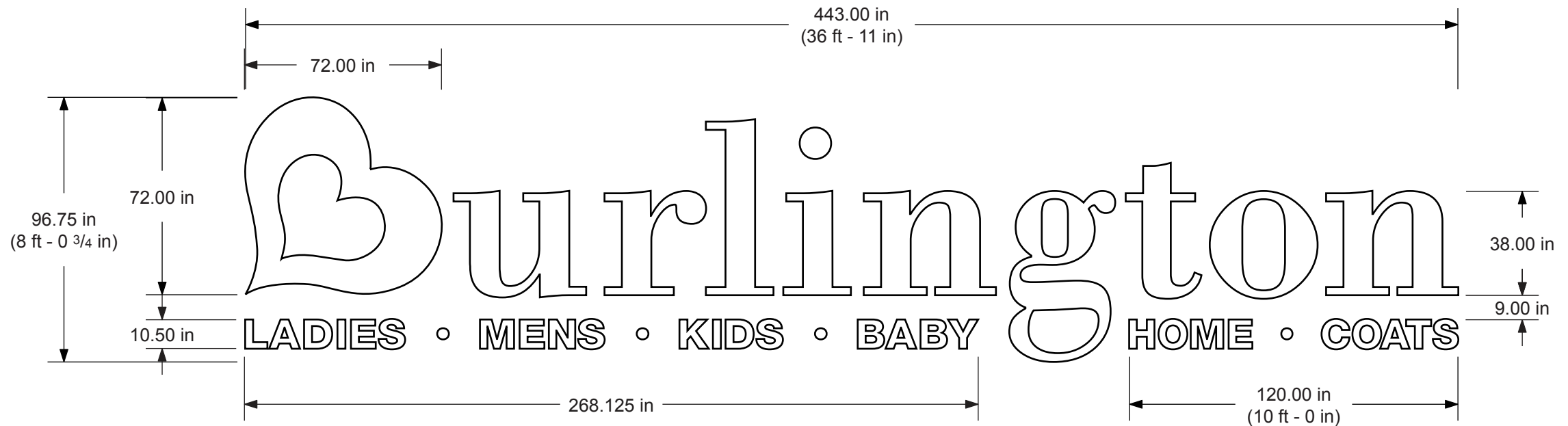
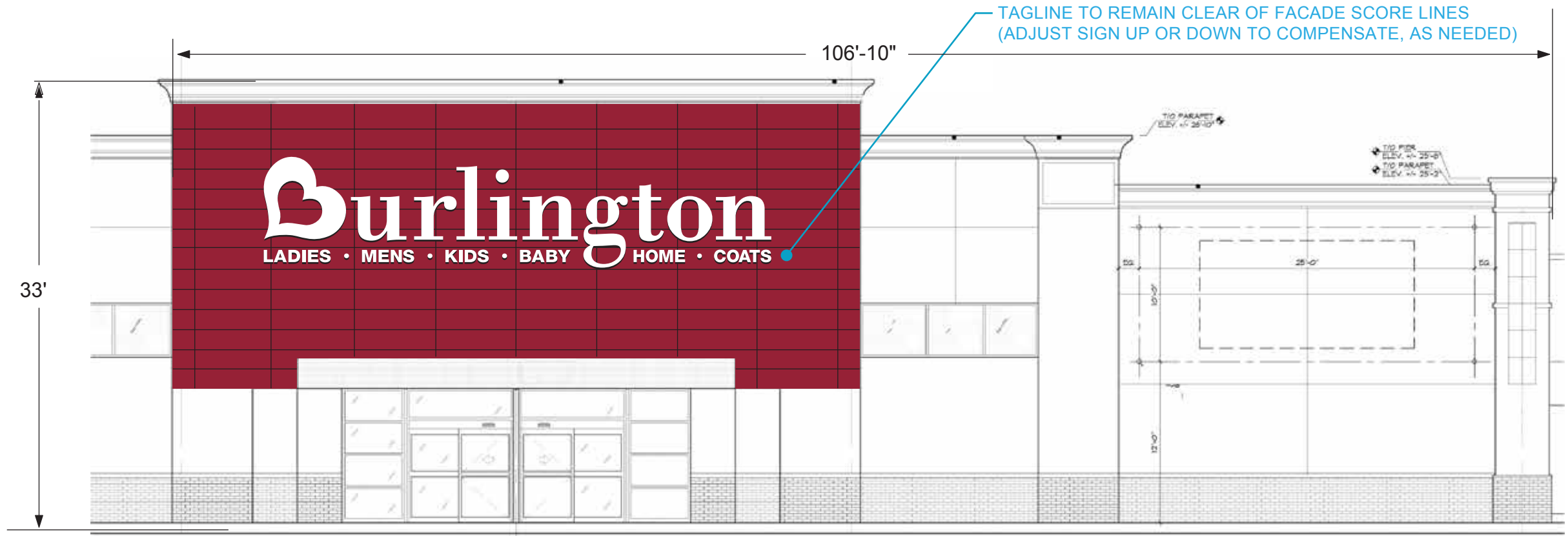
- Face: White Acrylic
- Trim Cap & Returns: Black
- Tagline Face: White Acrylic
- Tagline Trim Cap & Returns: Black

Project No. 7274
 Project Burlington Signage Package
 Location 215 N Maple Rd,
 Ann Arbor, MI 48103

Orig. Draft 02.22.2022
 Project Mgr. N/A
 Designer IDV
 Rev. Art MM
 Rev. Date 09.01.2022
 Page Rev. 005
 Rev. Details 72" sign

This sign design is exclusive property of Identiti Resources, LTD., and is the result of the original and creative work of its employees. This drawing is submitted to the customer for the sole purpose of purchase of the design or signage manufactured to this design, by Identiti Resources, LTD. Distribution to or use of this sign design by anyone outside of the customer's organization, without expressed, written authorization by Identiti Resources, LTD. is prohibited.

IDENTITI
 425 N Martingale Rd
 18th Floor
 Schaumburg, IL 60173
 Office 847.301.0510
 identiti.net



SPEC-84" Main

Proposed Signage = N/A

Relevant Signage Code
N/A

Sign Type
LED Channel Letters
Front-Lit

Mounting
Flush Mounted

Color Palette
 Face: White Acrylic
 Trim Cap & Returns: Black

Project No. 7274
 Project Burlington Signage Package
 Location 215 N Maple Rd,
 Ann Arbor, MI 48103

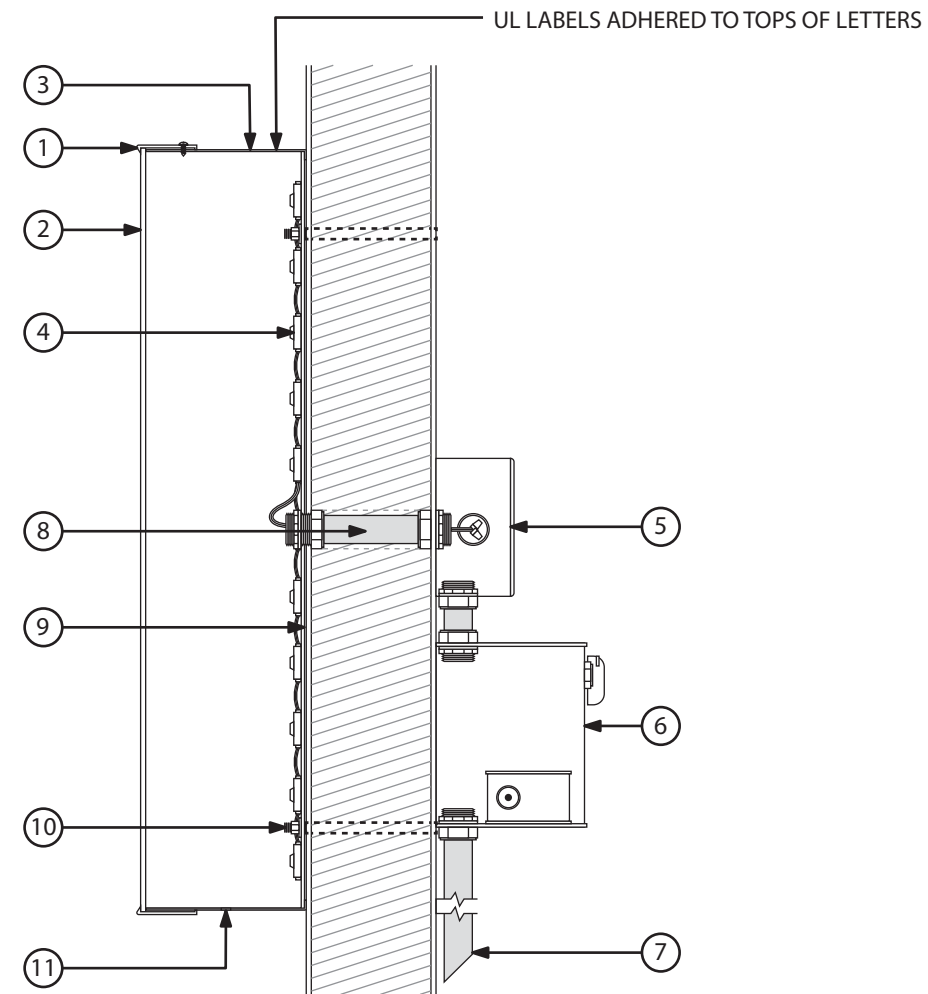
Orig. Draft 02.22.2022
 Project Mgr. N/A
 Designer IDV
 Rev. Art N/A
 Rev. Date 00.00.00
 Page Rev. 000
 Rev. Details N/A

This sign design is exclusive property of Identiti Resources, LTD., and is the result of the original and creative work of it's employees. This drawing is submitted to the customer for the sole purpose of purchase of the design or signage manufactured to this design, by Identiti Resources, LTD. Distribution to or use of this sign design by anyone outside of the customer's organization, without expressed, written authorization by Identiti Resources, LTD. is prohibited.

Burlington



"B" LOGO	
1	2" TRIM CAP: (WITH JEWELITE WASHER HEAD PHILLIPS SCREWS) PAINTED BLACK
2	3/16" LEXAN PANEL: WHITE
"urlington" LETTERS	
1	1" TRIM CAP: (WITH JEWELITE WASHER HEAD PHILLIPS SCREWS) PAINTED BLACK
2	3/16" ACRYLIC #7328: WHITE
IDENTICAL SPECIFICATIONS	
3	0.063 ALUMINUM RETURNS (5" DEPTH): PAINTED BLACK SATIN FINISH
4	LED UNITS: SLOAN PRISM WHITE
5	UL LISTED HOUSING: SECONDARY WIRING SPLICE POINT (WHEN NEEDED)
6	UL HOUSING W/ PWR SUPPLY (QTY VARIES) DISCONNECT SWITCH FOR DEDICATED PRIMARY POWER CIRCUIT
7	PRIMARY POWER CIRCUIT (PROVIDED/PERMITTED BY OTHERS) TO BE PLACED WITHIN 5 FEET OF CENTER OF SIGN
8	CONDUIT: SECONDARY ELECTRICAL RUN (WHEN NEEDED)
9	0.063 ALUMINUM BACK: PRECOAT WHITE FINISH
10	MOUNTING HARDWARE: STEEL KNURLED FLANGED RIVET NUT 0.805" L, 1/4"-18 DIA./THREAD SIZE W/ NUTS, WASHERS AND THREADED ROD
11	WEEP HOLES



A3 LETTER SECTION
SCALE: N.T.S.

SPEC-Tagline

Proposed Signage = N/A

Relevant Signage Code
N/A

Sign Type
LED Channel Letters
Front-Lit

Mounting
Flush Mounted

Color Palette

- Face: White Acrylic
- Tagline Trim Cap & Returns: Black

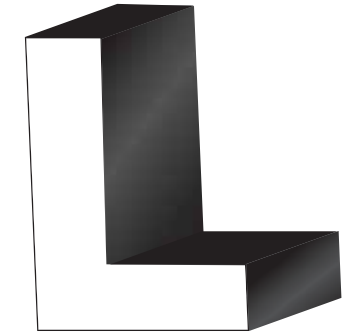
Project No. 7274
Project Burlington Signage Package
Location 215 N Maple Rd,
Ann Arbor, MI 48103

Orig. Draft 02.22.2022
Project Mgr. N/A
Designer IDV
Rev. Art N/A
Rev. Date 00.00.00
Page Rev. 000
Rev. Details N/A

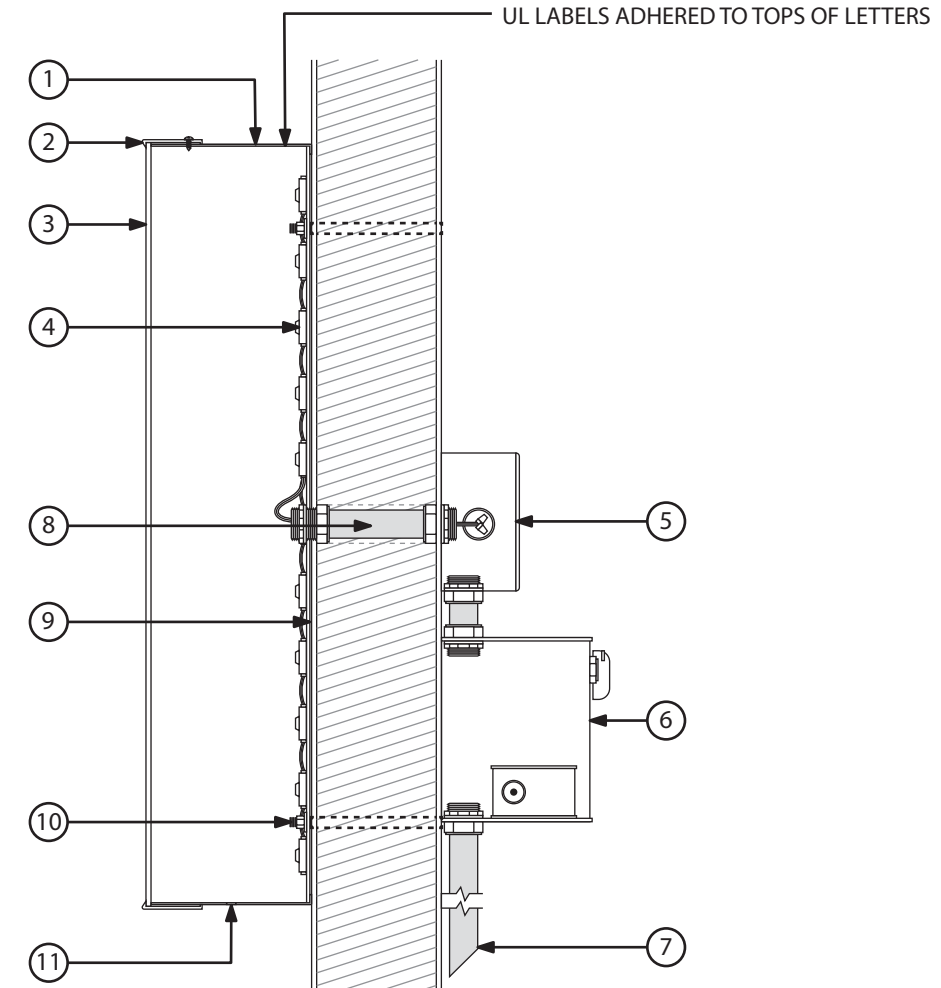
This sign design is exclusive property of Identiti Resources, LTD., and is the result of the original and creative work of it's employees. This drawing is submitted to the customer for the sole purpose of purchase of the design or signage manufactured to this design, by Identiti Resources, LTD. Distribution to or use of this sign design, by anyone outside of the customer's organization, without expressed, written authorization by Identiti Resources, LTD. is prohibited.

LADIES • MENS • KIDS • BABY

HOME • COATS



LETTERSET SPECIFICATIONS	
1	0.063 ALUMINUM RETURNS (3" DEPTH): PAINTED BLACK
2	1" TRIM CAP: (WITH JEWELITE WASHER HEAD PHILLIPS SCREWS) PAINTED BLACK
3	LEXAN PANEL: WHITE FACES
4	LED UNITS: WHITE
5	UL LISTED HOUSING: SECONDARY WIRING SPLICE POINT (WHEN NEEDED)
6	UL HOUSING W/ PWR SUPPLY (QTY VARIES) DISCONNECT SWITCH FOR DEDICATED PRIMARY POWER CIRCUIT
7	PRIMARY POWER CIRCUIT (PROVIDED/PERMITTED BY OTHERS) TO BE PLACED WITHIN 5 FEET OF CENTER OF SIGN
8	CONDUIT: SECONDARY ELECTRICAL RUN (WHEN NEEDED)
9	0.063 ALUMINUM BACK: PRECOAT WHITE FINISH
10	MOUNTING HARDWARE: VARIES ON FACADE TYPE AND SUPPORT STRUCTURE
11	WEEP HOLES



A3 LETTER SECTION
SCALE: N.T.S.