

Leslie Science & Nature Center was created as a place to not just understand nature, but experience it, be inspired by it, turn our curiosity into respect for and protection of our world.

This incredible place began with a gift, and is sustained by our community across SE Michigan.



Our history

Eugene and Emily Leslie lived at 1831 Traver from 1923-1976

Towards the end of their life, the Leslies wished to keep their open space for all time, and deeded the land to the City

The Leslie Science Center opened in 1986, after extensive input from the community and a master plan in 1983 from the Ann Arbor Parks and Recreation Department

The addition of Black Pond Woods in 1991 contributed to a focus on environmental education



Our history

In 2006, 14 raptors joined our staff allowing us to work side-by-side with them in our educational programming

July 2007, Leslie evolved into a 501(c)3 non-profit, partnering with but separate from the city

From 2008 to 2016 we experienced a doubling of income growth and a tripling of program numbers and people served annually, the demand continued to outpace our resources for staff support.

2016-17 we explored several possible paths forward, one included a merger with another non-profit in town

2018 brought potential of investing in the site on a large scale with the playscape project, which led to a temporary site shut down in 2019



Who we are today, and what we do

We help people build connections to the world around them, through exploration and play, through learning and discovery, through hands-on activities and guided experiences.



2022-23 Highlights

- Capital Improvements: City, LSNC, and together
- Visitor Experience Improvements
- Growth of impact through partnerships and programming
- Expansion of camp services
- Scholarships for schools

Our Impact and Visioning Forward

Over 6000 students from schools in 47 zip codes visited our site last year

Our environmental education and science programs went out to over 40,000 students in 97 zip codes from 11 counties across Southeastern Michigan last year

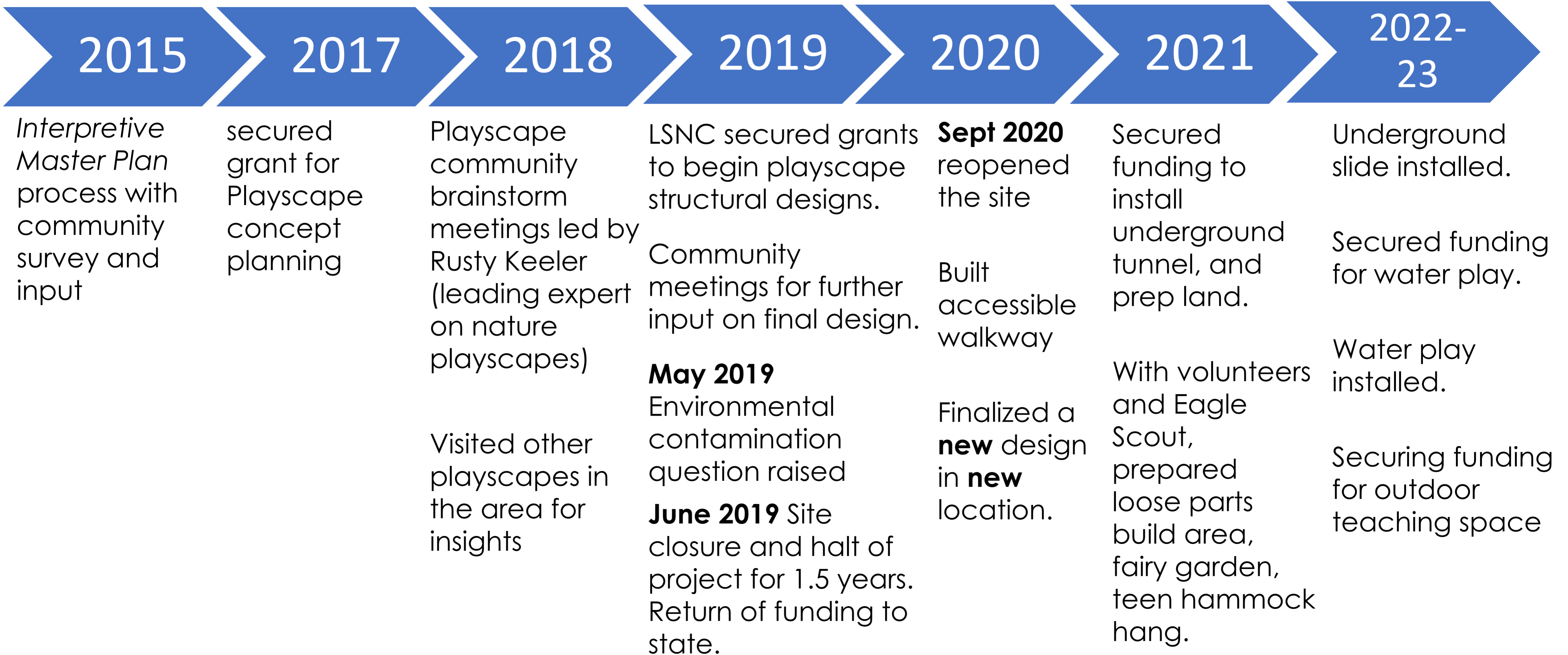
Our Summer Camp program supported 1400 preschool through fifth grade students, plus over 50 high school students over 11 weeks

Accessibility is centered in our work. Our site continues to be free and open to all who come through and attend a program or visit on their own. The Critter House is open and free two times a month and sees people from multiple counties in the region, Fireside Fun – a FREE monthly bonfire program attracts people from Brighton, Ypsilanti, Chelsea even Jackson and Canton.



*Open invitation for your input as we navigate how we focus our energy, resources and time going forward.
Interested in being part of this conversation? Please let me know: swesthoff@lesliesnc.org*

Nature Playscape: Outgrowth from community input and master planning



UNITY IN LEARNING

ANN ARBOR HANDS-ON MUSEUM LESLIE SCIENCE & NATURE CENTER



Leslie
SCIENCE & NATURE
Center

Messy &
Loose Parts

Net Climber

Teaching Space

Accessible Path

Hammock Hangout
Firepit

Eagle's
Nest

Waterplay

Picnic Area

Activity
Zone

Raptor
Enclosures

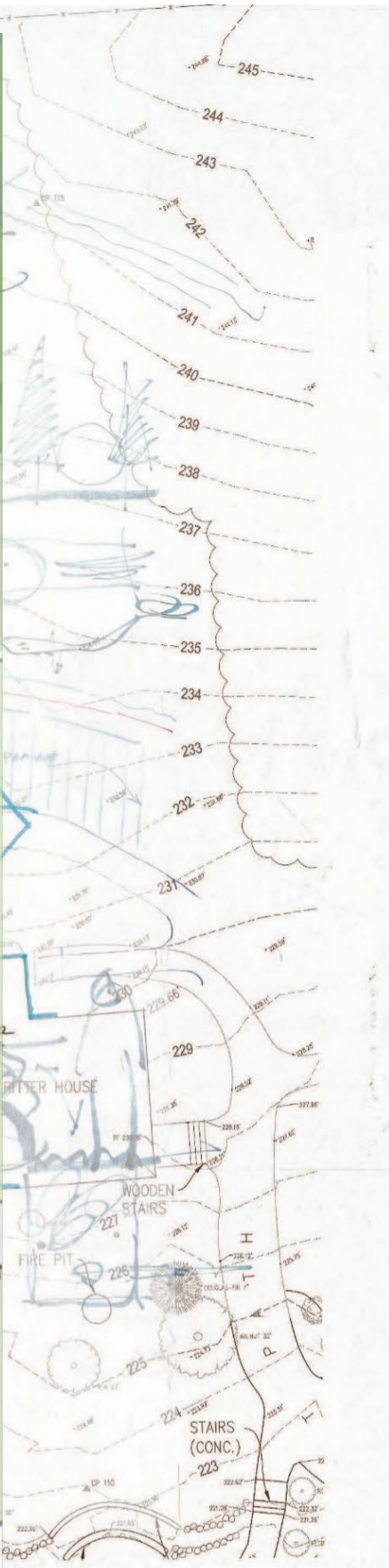
Rain Garden

Program

NATURE PLAYSCAPE

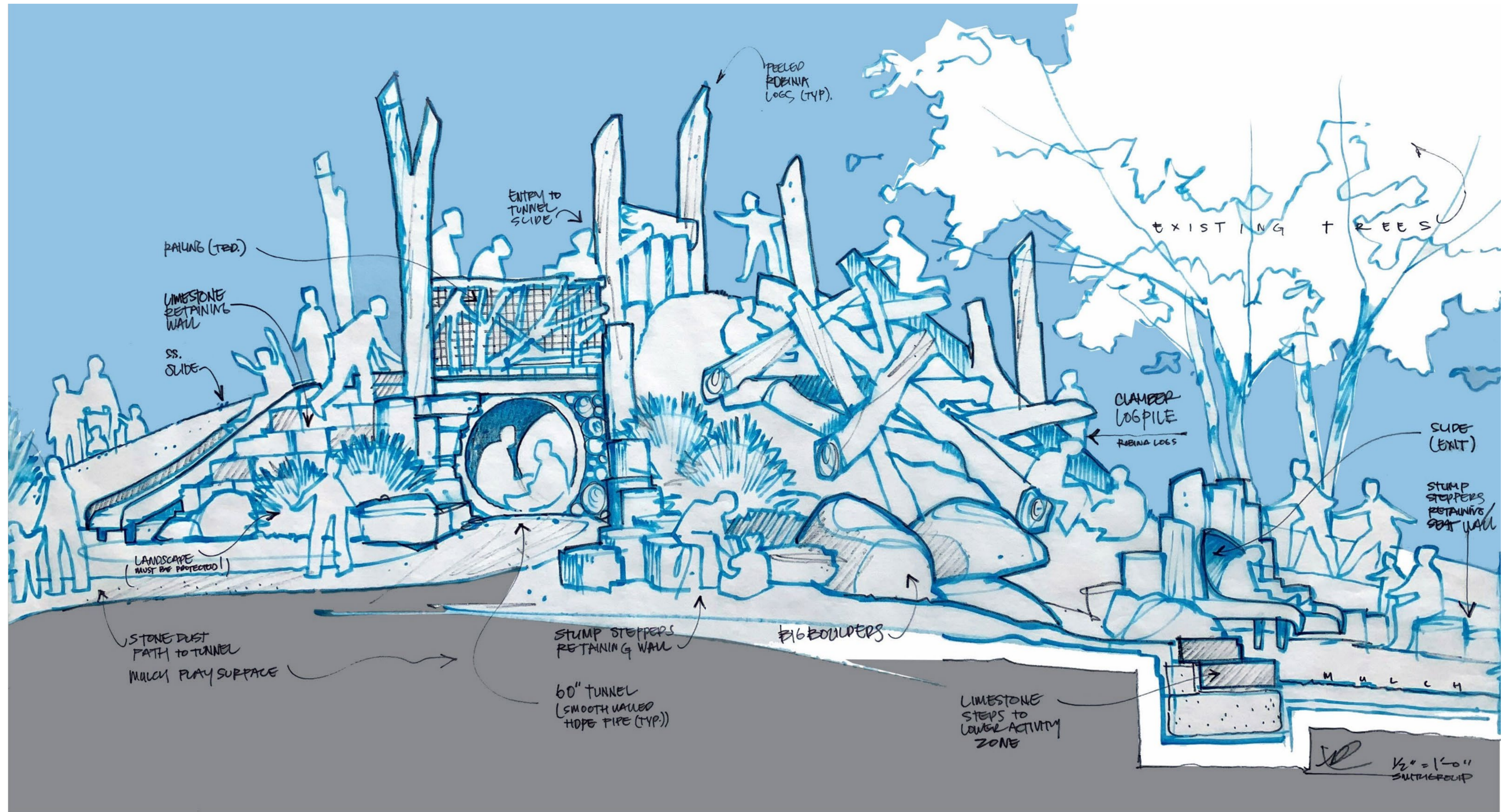
PLAYSCAPE CONCEPT
LESLIE SCIENCE & NATURE CENTER

- A WATER PLAY AREA
- B STAINLESS STEEL SLIDE (12' HGT)
- C FUNNEL (10" SQUARE HOLES - 4' DIA. DIA)
- D LEAGUES NEST
- E MESSY PARTS ZONE
- F NET CLIMBER / CHALLENGE ZONE
- G TEACHING SPACE (10' DIA. DIA)
- H RAPTOR NESTS (2-50 PEOPLE)



CMB

PHASE 1:
Active Play Zone



Activity Zone - Elevation
NATURE PLAYSCAPE

**PHASE 1:
Active Play Zone**



Activity Zone

NATURE PLAYSCAPE

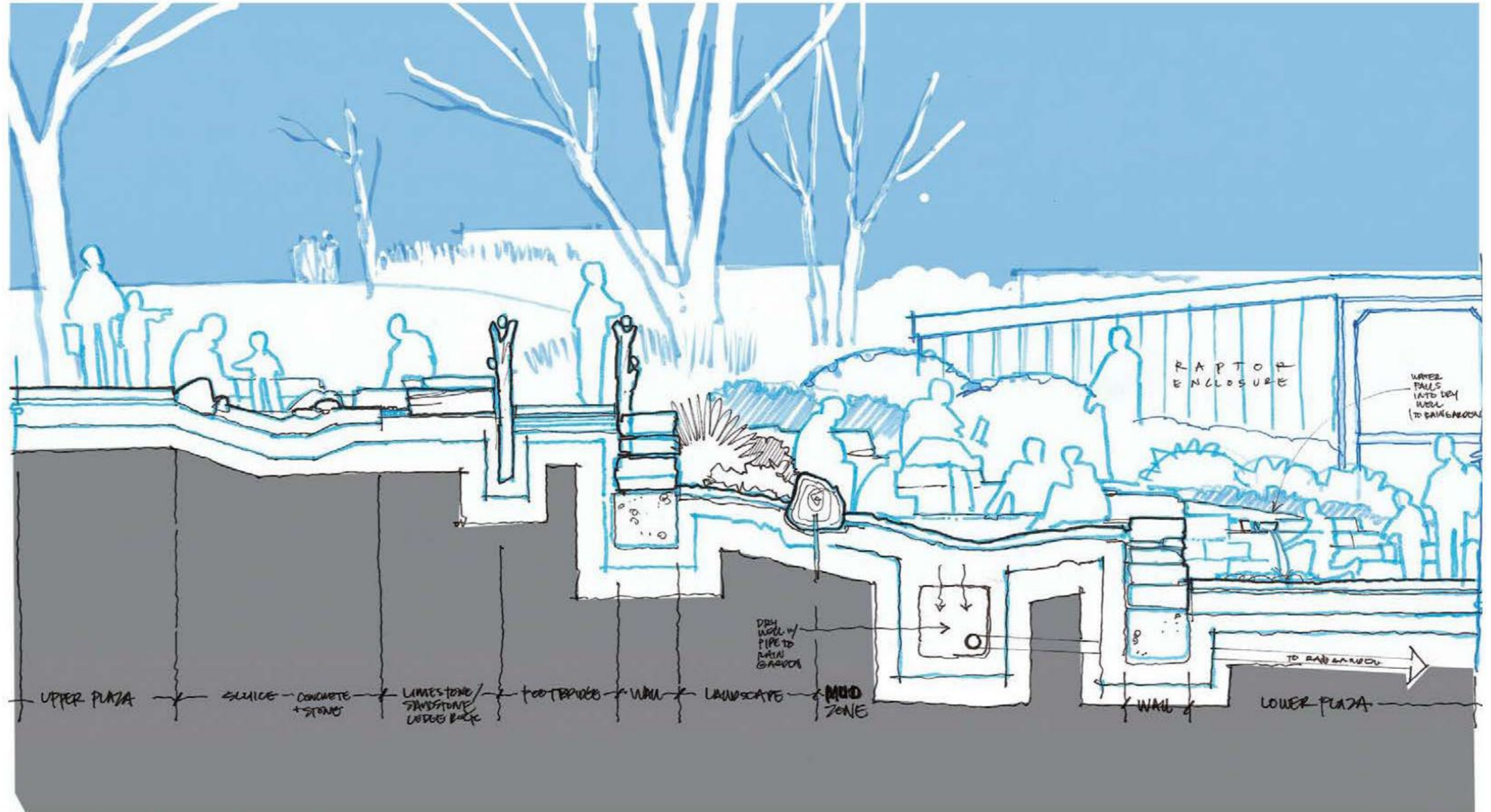
UNITY IN LEARNING
ANN ARBOR HANDS-ON MUSEUM LESLIE SCIENCE & NATURE CENTER



PHASE 1:
Active Play Zone
Fully built
2022-23



PHASE 2:
Water Play Zone
*Currently in
construction, Fall 2023*



Waterplay - Section
NATURE PLAYSCAPE

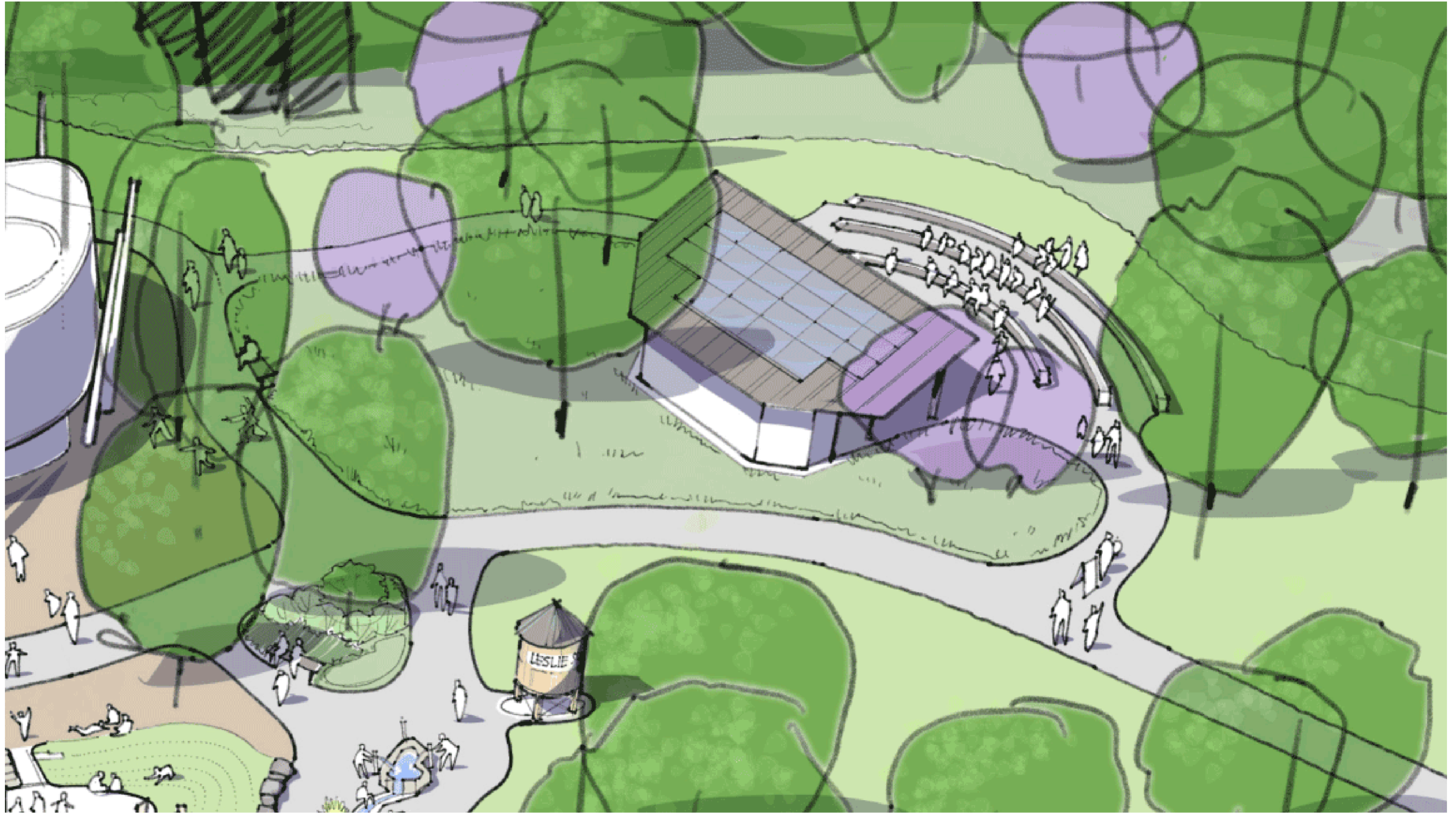
PHASE 2:
Water Play Zone
Currently in construction,
Fall 2023



Waterplay
NATURE PLAYSCAPE



PHASE 3:
Outdoor teaching space
*Fundraising actively for
construction in 2024*



Teaching Space
NATURE PLAYSCAPE



Nature Playscape Project Budget

		FUNDED	STILL NEEDED
original design <i>and redesign for new location</i> costs – Fully Funded	25000	25000	0
LSNC staff investment since 2015	ongoing	47300	ongoing
Water Play Zone – Fully Funded	150,000	15000	0
Accessible pathway – Fully Funded	75,000	75000	0
Active Play Zone – Fully Funded	242,690	242690	0
Eagle's Nest – Fully Funded	10,000	10000	0
native plant gardens around playscape	25,000	12500	12,500
Messy/Loose parts equipment and materials – Fully Funded	10,000	10000	0
Teen Hammock Hang area – Fully Funded	15,000	15000	0
Outdoor teaching space	400,000	140000	260,000
shade sails for seating	40,000	0	40,000
outdoor seating	25,000	10000	15,000
solar panel installation, batteries, interpretive sign	65,000	0	65,000
reimagined net climber area	35,000	0	35,000
welcome hut and signage	30,000	0	30,000
public restrooms	300,000	0	300,000
signage for site	50,000	0	50,000
Total costs:	1,497,690	602490	807500

Your support of the LSNC Nature Playscape is a partnership with your community. Together, we can build something truly remarkable: relationships with nature that will last a lifetime.