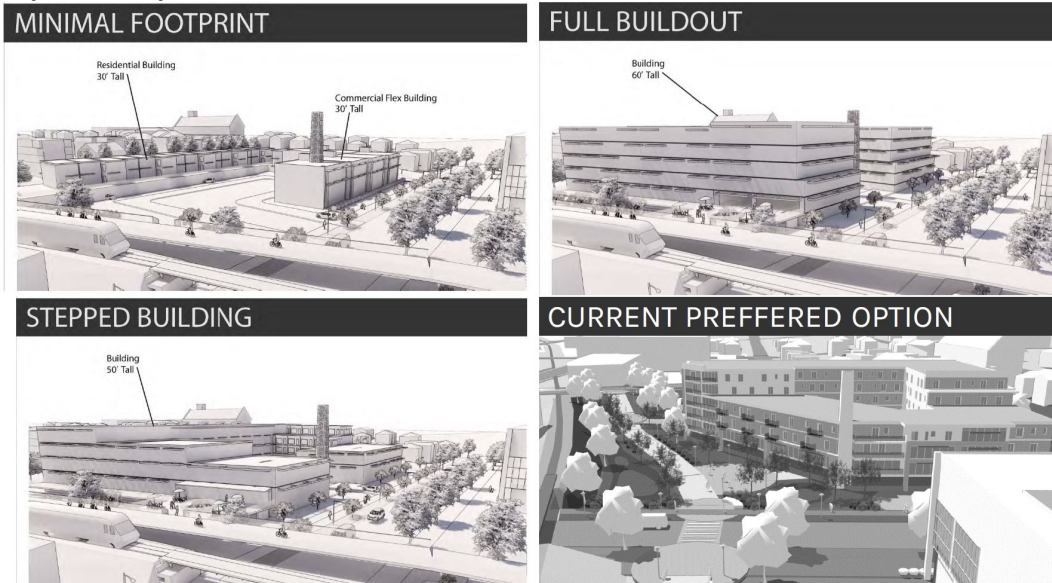


**Overview of Engagement Process**

<b>October-June</b>	Regular Bi-Weekly Core Group Meetings
<b>October-November</b>	Small Focus Group Meetings with Adjacent Constituents (OWS, HHSB, YMCA, Treeline, etc.)
<b>Early November</b>	Website + Survey Launched, Public Meeting Announcements / Flyers Sent  <b><i>1,400 Unique Website Users, 302 Unique Survey Responses</i></b>
<b>November 18</b>	City Council Update
<b>December 5-9</b>	20+ Hours of In Person Workshops across 4 different locations  <b><i>+/- 150 Unique Participants</i></b>
<b>January 14</b>	City Council Workshop
<b>January 28</b>	Presentation/Conversation with Treeline Conservancy Board
<b>Early February</b>	Small Group Meetings with Adjacent Constituents (OWS, HHSB, YMCA, Treeline, etc.)
<b>February 25</b>	Community Report Out + Discussion at DDA Offices  <b><i>50+ Unique Participants</i></b>
<b>April 20</b>	City Council Resolution (Postponed)
<b>May 1</b>	Meeting Notice + Survey Link Sent to Residents within 1,000 feet of 415 W Washington (1,200 Total Residents)  <b><i>Approximately 200 Responses Received</i></b>
<b>May 19</b>	Additional Presentation/Conversation with Treeline Conservancy Board
<b>May 21</b>	Additional Community Engagement Input Session  <b><i>60+ Attendees</i></b>

# Housing + Affordability in Ann Arbor Redeveloping 415 W Washington-SUMMARY

## Options Proposed



## In-Person and Online Feedback 10/1/2019-3/1/2020

- 450 Respondents. Top 6 Consensus Priorities/Success Metrics:
  1. Remediate any potential environmental contaminations
  2. Engage the Treeline Trail
  3. Maximize affordable housing units for 60% AMI households on site
  4. Preserve Chimney Swift Habitat
  5. Provide additional uses
  6. Fit in with existing adjacent building heights and scales
- Summary Comments Received
  - 7% of comments support Minimal Footprint
  - 12% of comments support Stepped Building
  - 20% of comments support Full Buildout
  - 58% of comments referenced maximizing affordable housing
  - 18% of comments referenced connections to the Treeline Trail, activating the ground plane and importance of thinking about adjacencies holistically
  - 10% of comments referenced Chimney Swifts and/or environmental considerations
  - .5% of comments referenced concerns with building heights and/or being intrusive to the neighborhood

## Survey Feedback 5/1/2020-6/1/2020

- 165 Survey Responses Received (Mailed to 1,200 Residents within 1,000' of 415 W Washington)
  - 40% Support Minimal Footprint
  - 36% Support Full Buildout
  - 24% Support Stepped Building

## Website Feedback 5/1/2020-6/1/2020

- 50 Additional Comments Received via Website [www.community-engagement-annarbor.com](http://www.community-engagement-annarbor.com)
  - 34 Support the Preferred Option (68%)
  - 8 DO NOT Support the Preferred Option (16%)
  - 8 Offer Additional Ideas (16%)