

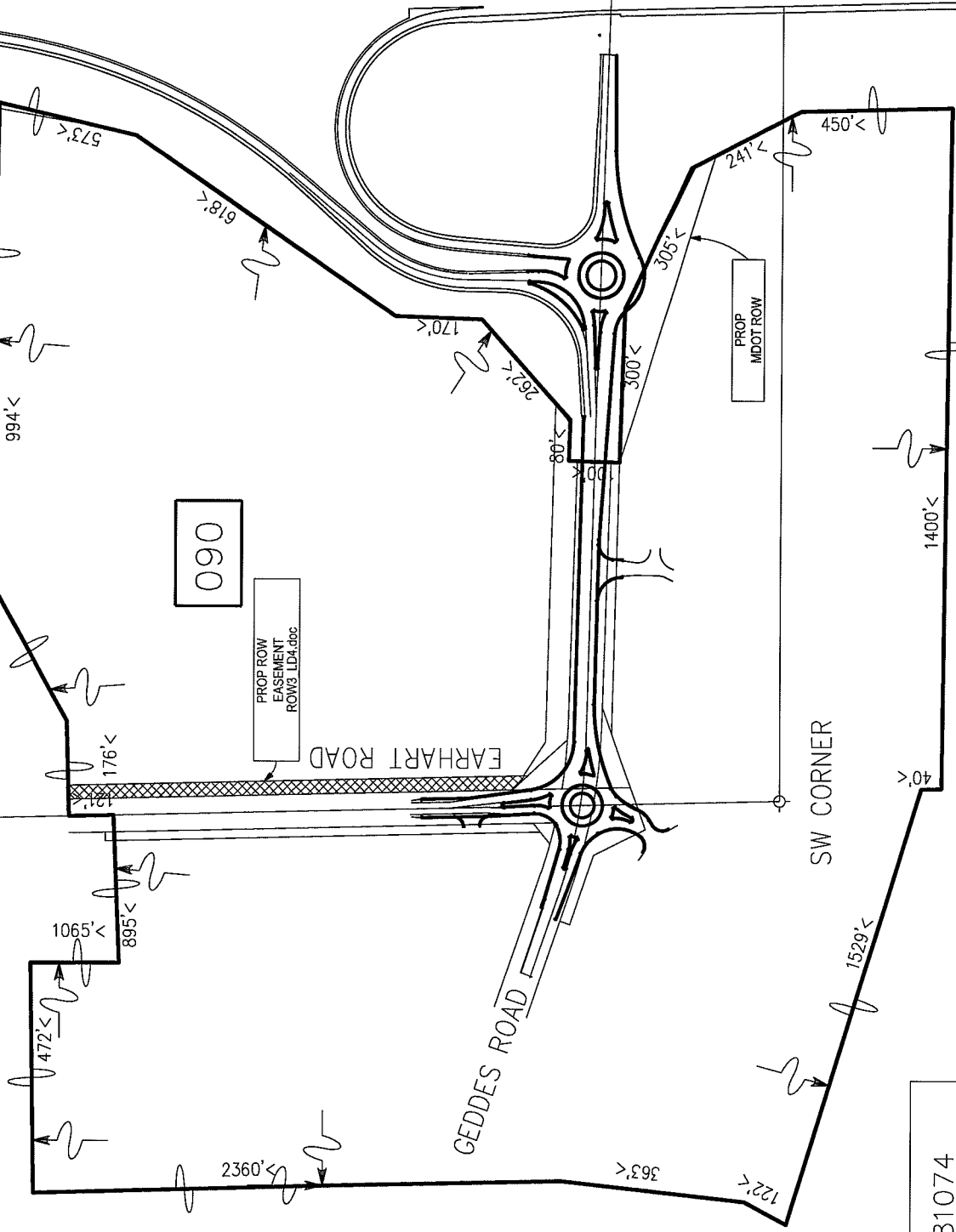
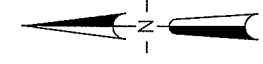
Exhibit "A"

SEC. 25, 26, 35 & 36, T02S, R06E
 CITY OF ANN ARBOR
 WASHTENAW COUNTY

091

W 1/4 CORNER

US-23



090

PROP ROW EASEMENT ROW3 LD14.80C

EARHART ROAD

GEDDES ROAD

PROP MDDOT ROW

SW CORNER

HURON RIVER

CONTROL 81074
 JOB NO. 87939B
 PARCEL 90

US-23