

Sarah's “small apartment building” research

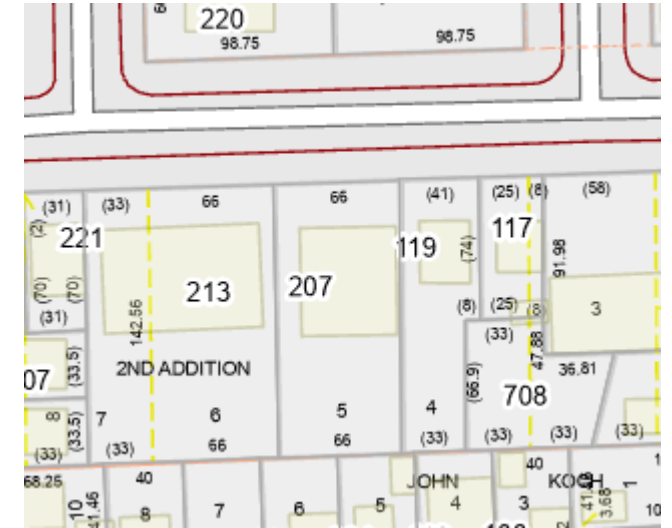
- Unit counts and floor area from Online Assessment
 - Ground floor estimates, when not online, are based on floor area by number of floors
- Pictures from google maps
- Arranged by increasing ground floor area
- Key question: what is small?

6 Parkview



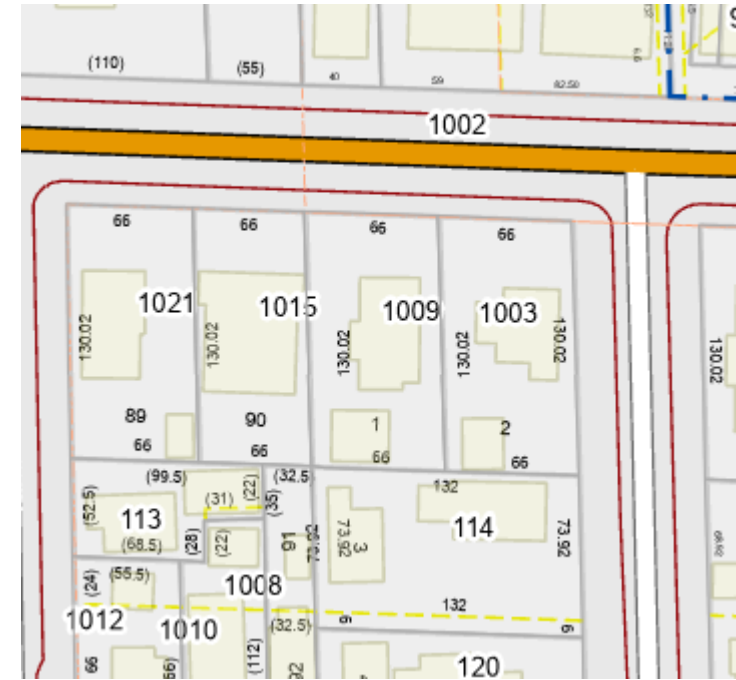
- 5 units
- 2,774 sq ft
- GF = 1,405 sq ft

207 W Mosley



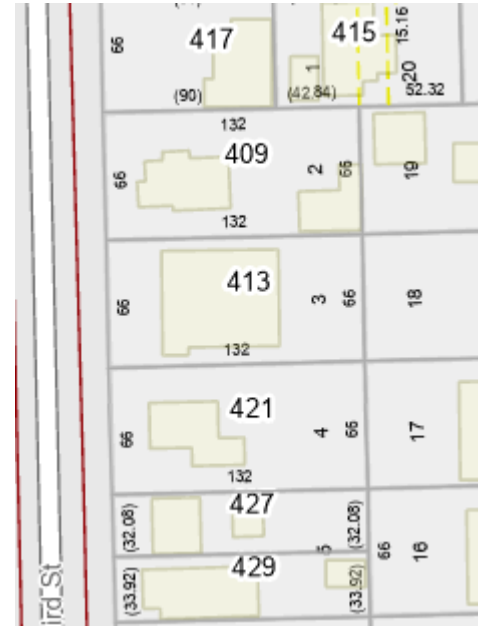
- 8 units
- 4,312 sq ft
- GF = 2,156 sq ft (est)

1015 W Huron



- 8 units
- 7,192 sq ft
- GF = 2,397 sq ft (est)

413 Third



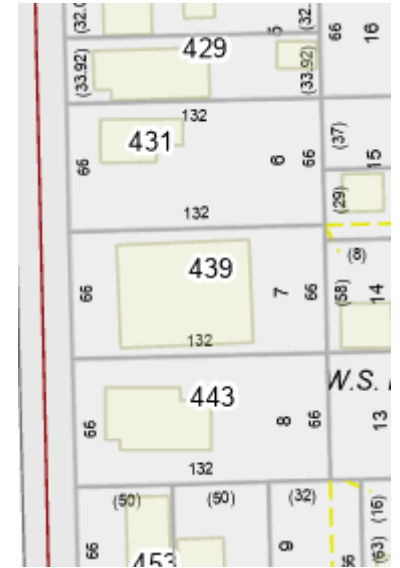
- 8 units
- 7,266 sq ft
- GF = 2,422 sq ft (est)

418 Second (426, too)

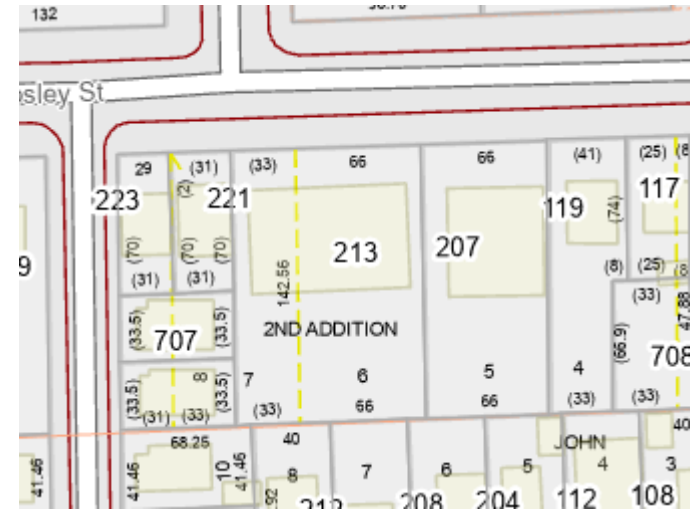


- 8 units
- 7,532 sq ft
- GF = 2,511 sq ft (est)

439 Third

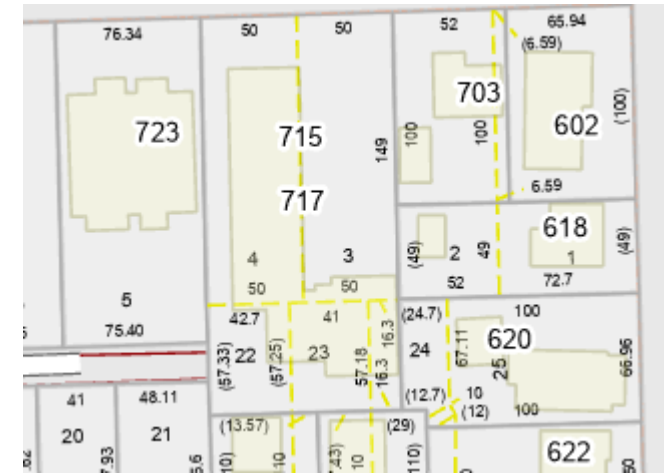


- 10 units
- 6,988 sq ft
- GF = 2,800 sq ft (est)



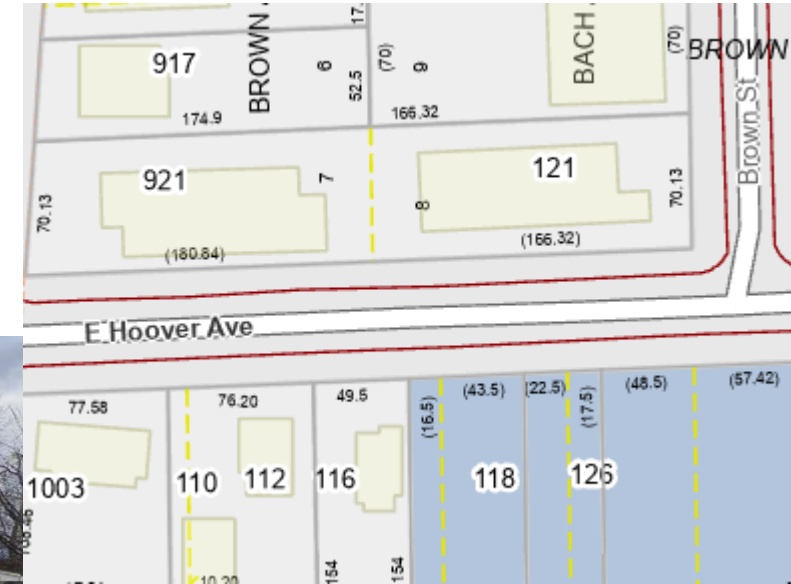
- 12 units
- 6,278 sq ft
- GF = 3,139 sq ft (est)

715 W Madison



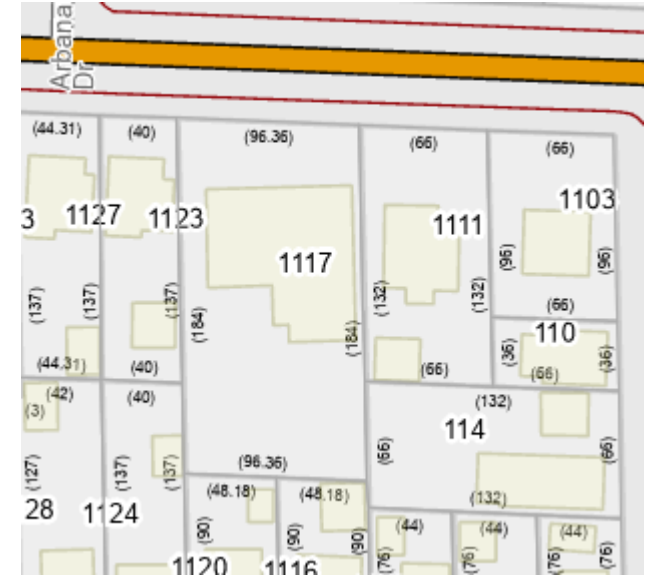
- 20 units
- 11,040 sq ft
- GF = 3,680 sq ft (est)

921 S Main



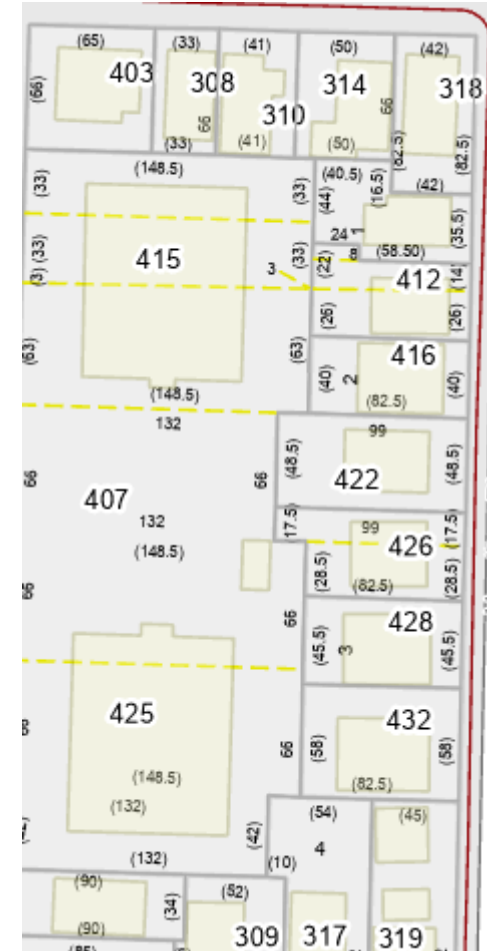
- 32 units (combined)
- 27,834 sq ft (combined)
- GF = 9,278 sq ft (est)
4,639 each building

1117 W Huron



- 15 units
- 14,586 sq ft
- GF = 4,862 sq ft (est)

407 S Fifth



- 24 units (combined)
- 55,700 sq ft (combined)
- GF = 18,566 sq ft (est)
9,283 each building