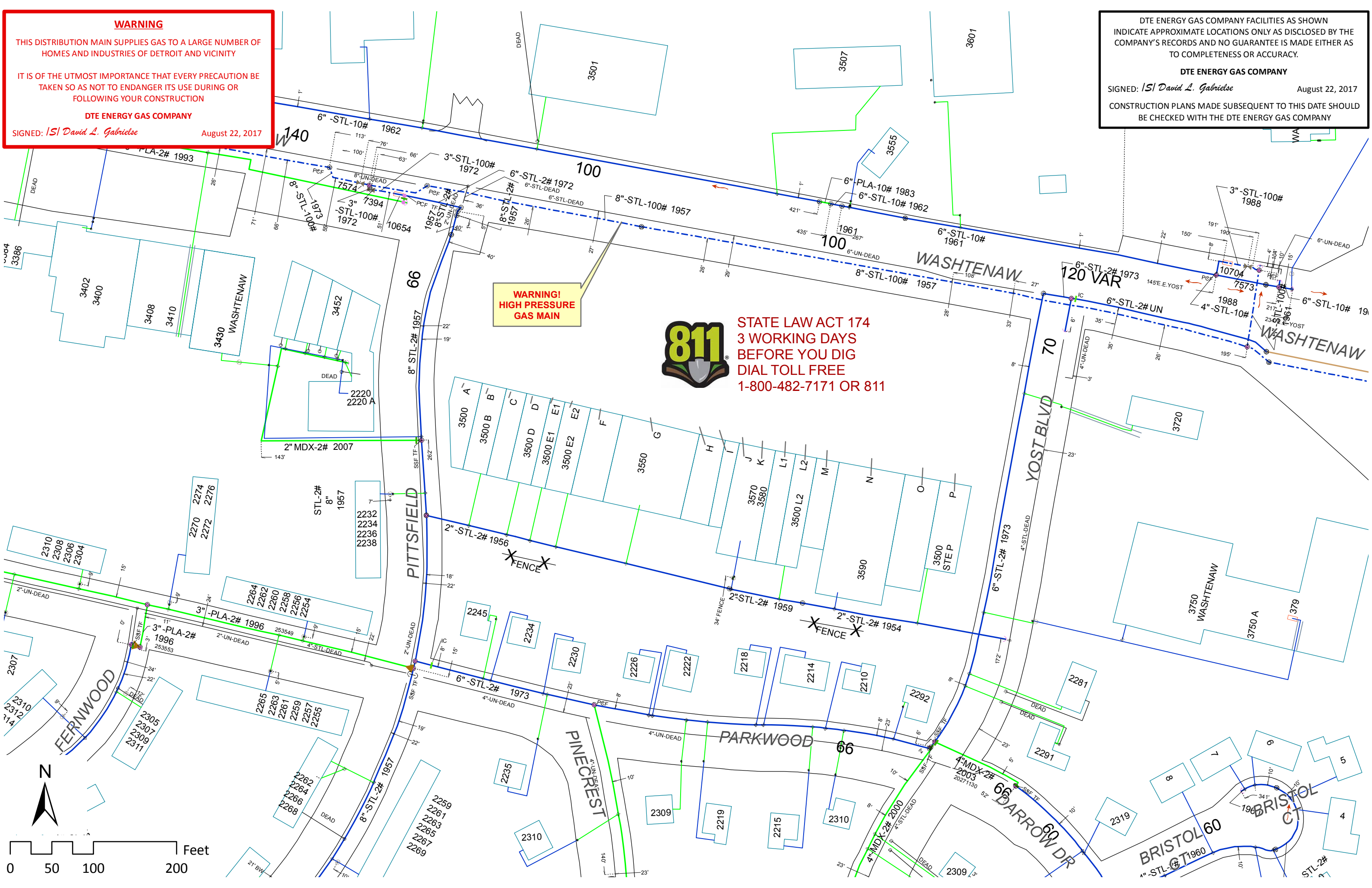


**WARNING**  
 THIS DISTRIBUTION MAIN SUPPLIES GAS TO A LARGE NUMBER OF HOMES AND INDUSTRIES OF DETROIT AND VICINITY  
 IT IS OF THE UTMOST IMPORTANCE THAT EVERY PRECAUTION BE TAKEN SO AS NOT TO ENDANGER ITS USE DURING OR FOLLOWING YOUR CONSTRUCTION  
**DTE ENERGY GAS COMPANY**  
 SIGNED: *ISI David L. Gabrielse* August 22, 2017

DTE ENERGY GAS COMPANY FACILITIES AS SHOWN INDICATE APPROXIMATE LOCATIONS ONLY AS DISCLOSED BY THE COMPANY'S RECORDS AND NO GUARANTEE IS MADE EITHER AS TO COMPLETENESS OR ACCURACY.  
**DTE ENERGY GAS COMPANY**  
 SIGNED: *ISI David L. Gabrielse* August 22, 2017  
 CONSTRUCTION PLANS MADE SUBSEQUENT TO THIS DATE SHOULD BE CHECKED WITH THE DTE ENERGY GAS COMPANY



**WARNING!  
 HIGH PRESSURE  
 GAS MAIN**



**STATE LAW ACT 174  
 3 WORKING DAYS  
 BEFORE YOU DIG  
 DIAL TOLL FREE  
 1-800-482-7171 OR 811**

