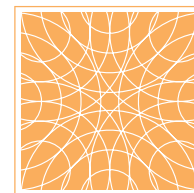


VERIDIAN AT COUNTY FARM

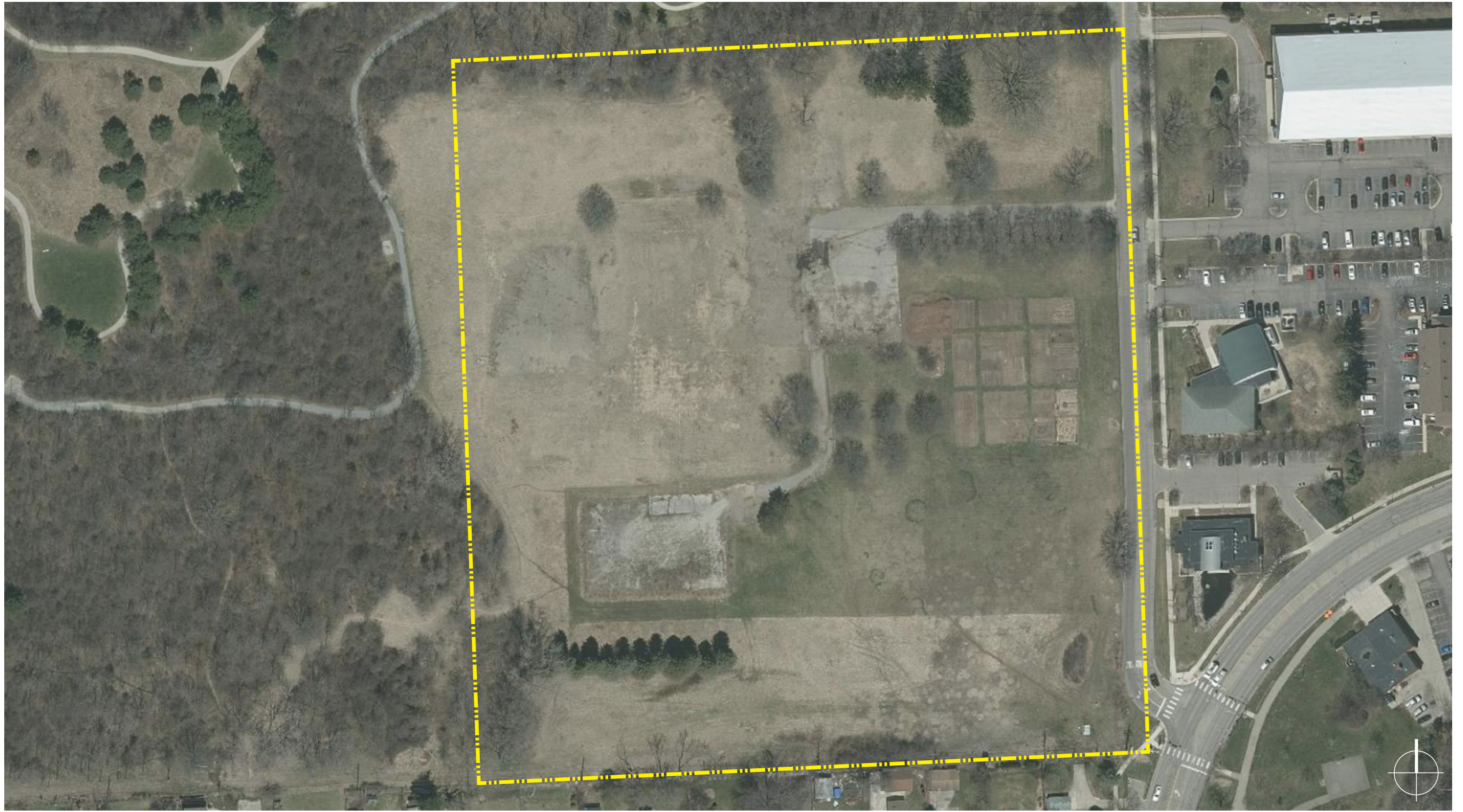
PLANNING COUNCIL WORKING SESSION

JULY 9, 2019



UNION STUDIO

ARCHITECTURE & COMMUNITY DESIGN

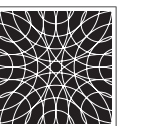


VERIDIAN AT COUNTY FARM

EXISTING CONDITIONS

JULY 9, 2019

SCALE: 1"=100'-0"



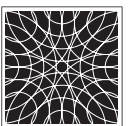


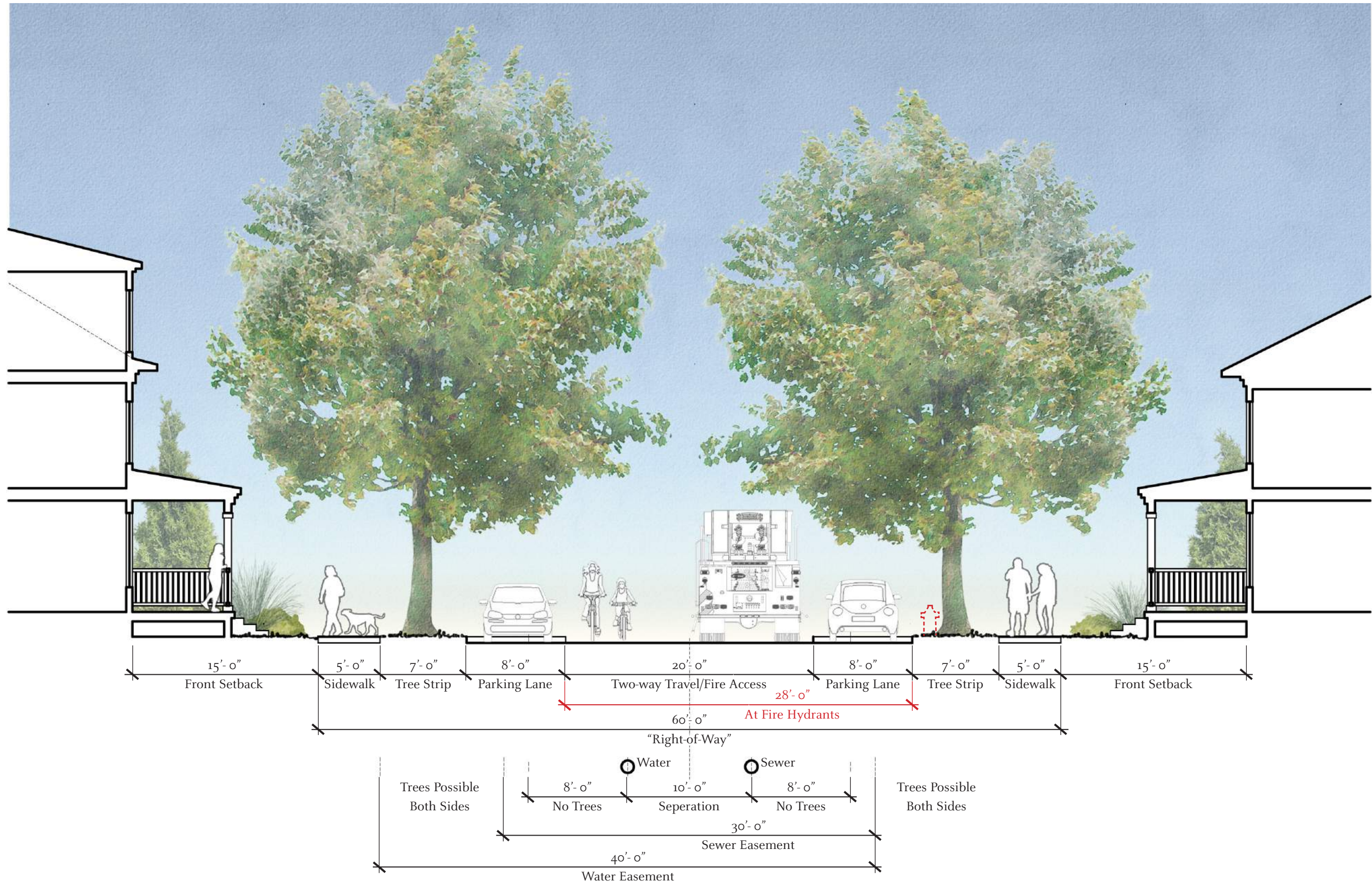
VERIDIAN AT COUNTY FARM

CURRENT PROPOSED SCHEME

JULY 9, 2019

SCALE: 1"=100'-0"



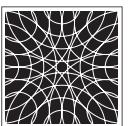


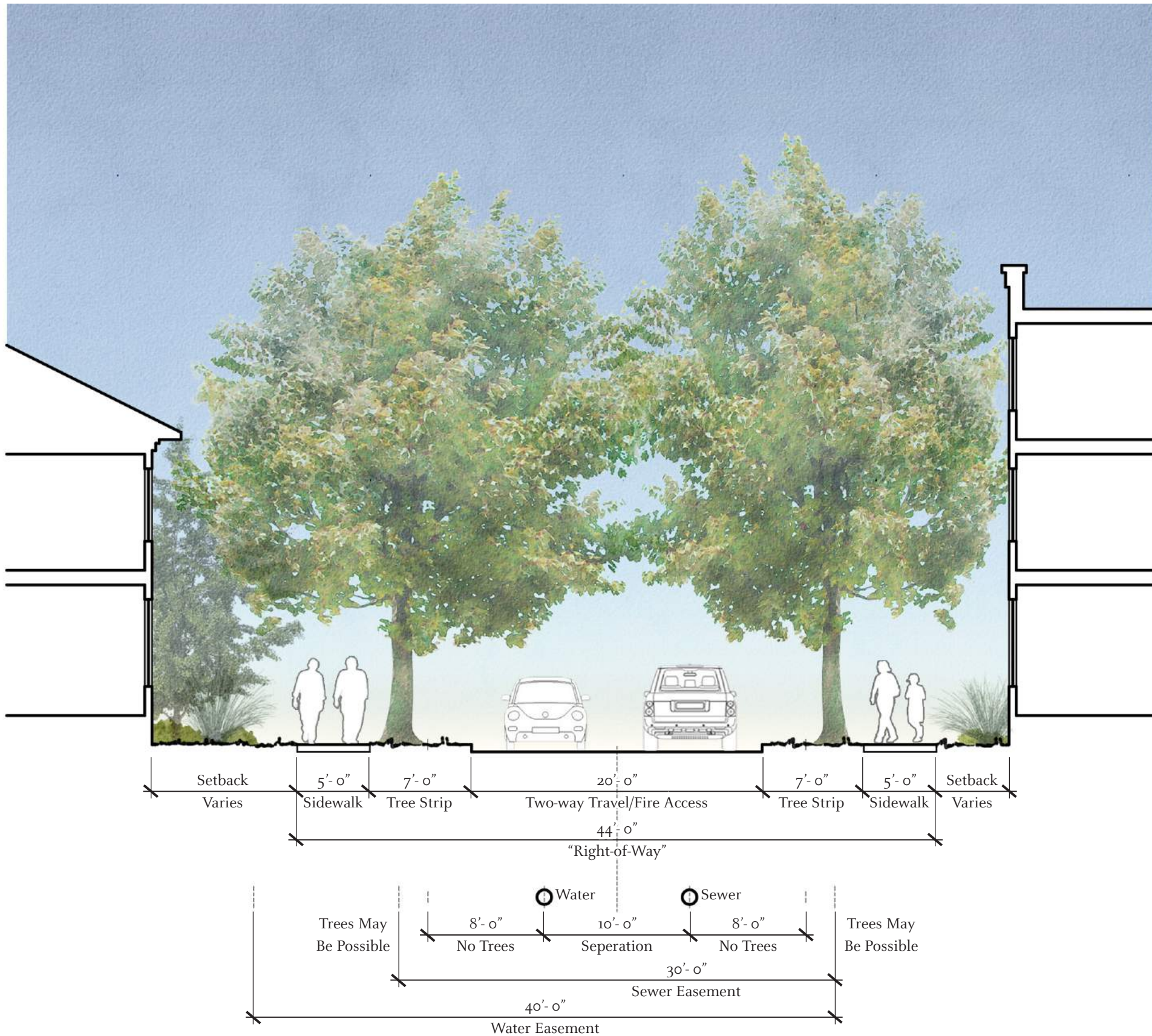
VERIDIAN AT COUNTY FARM

STREET SECTIONS: TYPICAL LOOP ROAD (SHOWN WITH PARKING BOTH SIDES)

JULY 9, 2019

SCALE: 1/8"=1'-0"





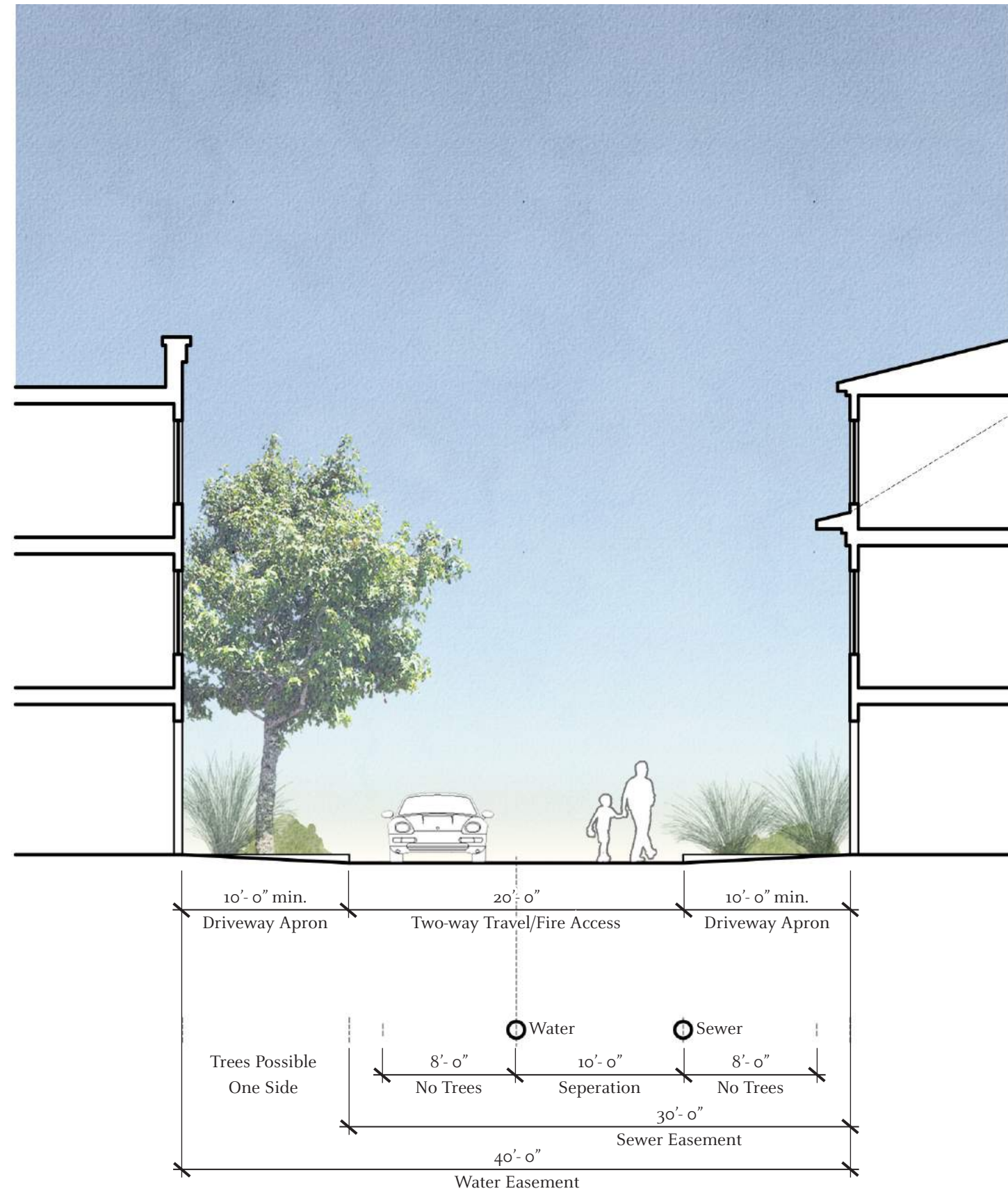
VERIDIAN AT COUNTY FARM

STREET SECTIONS: LOOP ROAD AT PINCH POINTS (NO PARKING)

JULY 9, 2019

SCALE: 1/8"=1'-0"



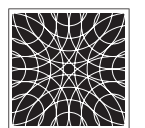


VERIDIAN AT COUNTY FARM

STREET SECTIONS: TYPICAL PARKING ACCESS LANE (SHOWN WITH GARAGES BOTH SIDES)

JULY 9, 2019

SCALE: 1/8"=1'-0"





VERIDIAN AT COUNTY FARM

NEIGHBORHOOD CHARACTER: PUBLIC BUILDINGS

JULY 9, 2019

NOT TO SCALE





VERIDIAN AT COUNTY FARM

NEIGHBORHOOD CHARACTER: RESIDENTIAL BUILDINGS

JULY 9, 2019

NOT TO SCALE

