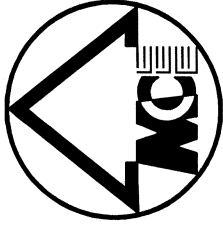
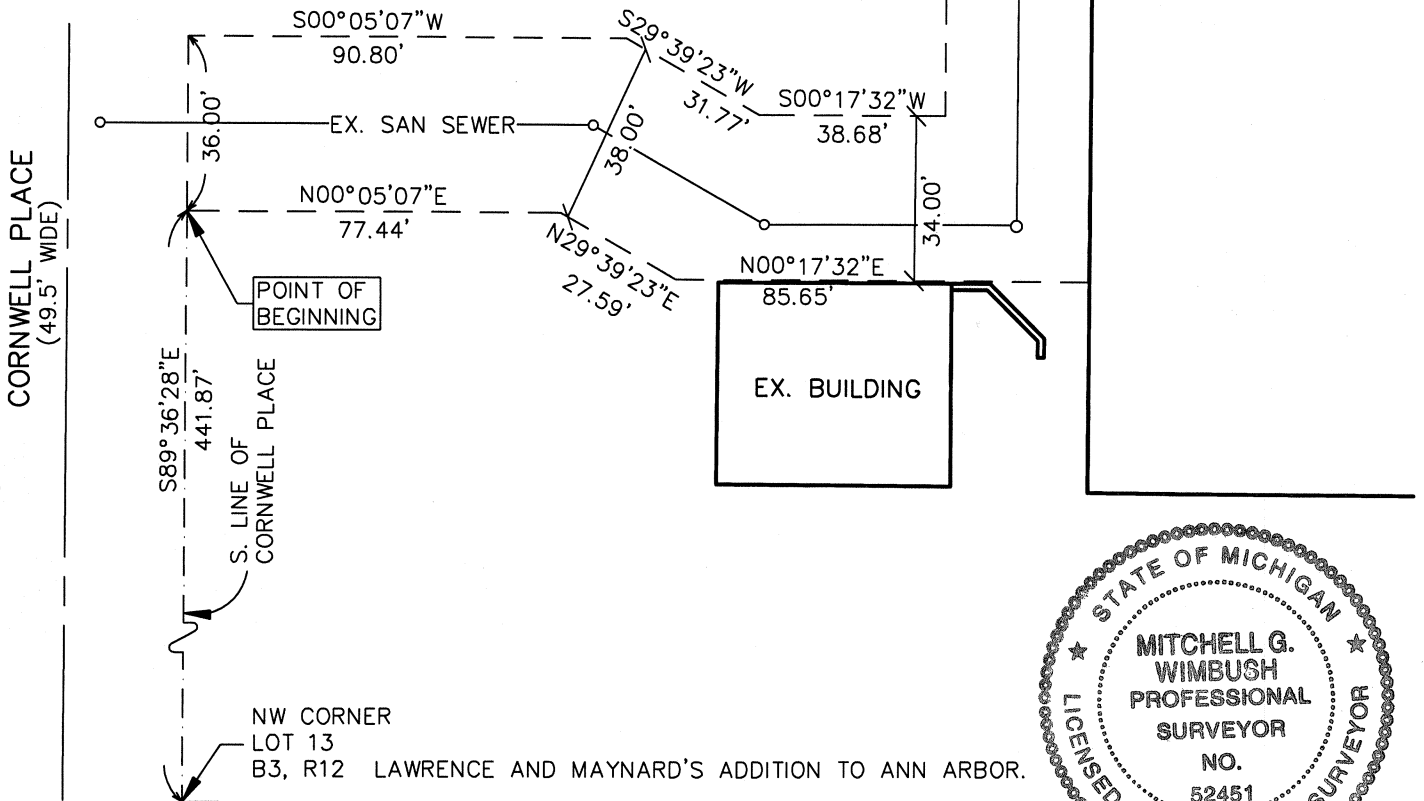


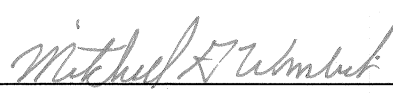

EXHIBIT C



GLENN STREET

SANITARY SEWER EASEMENT LOCATED IN THE
NW 1/4 OF SECTION 28, T2S, R6E, CITY OF
ANN ARBOR, WASHTENAW COUNTY, MICHIGAN



CLIENT: UNIVERSITY OF MICHIGAN	DATE: 06/21/06	Prepared by: Midwestern Consulting LLC  Mitchell G. Wimbush Professional Surveyor No. 52451
JOB NO.: 06109	SHEET 1 OF 2	
SECTION: 28 TWN: 2S RANGE: 6E	SCALE: 1in. = 40 ft.	
CITY OF ANN ARBOR	BOOK: #	
WASHTENAW COUNTY, MICHIGAN	BY: MGW	
MIDWESTERN CONSULTING  Civil, Environmental and Transportation Engineers Planners, Surveyors Landscape Architects		
3815 Plaza Drive Ann Arbor, Michigan 48108 Phone: 734.995.0200 Fax 734.995.0599		