

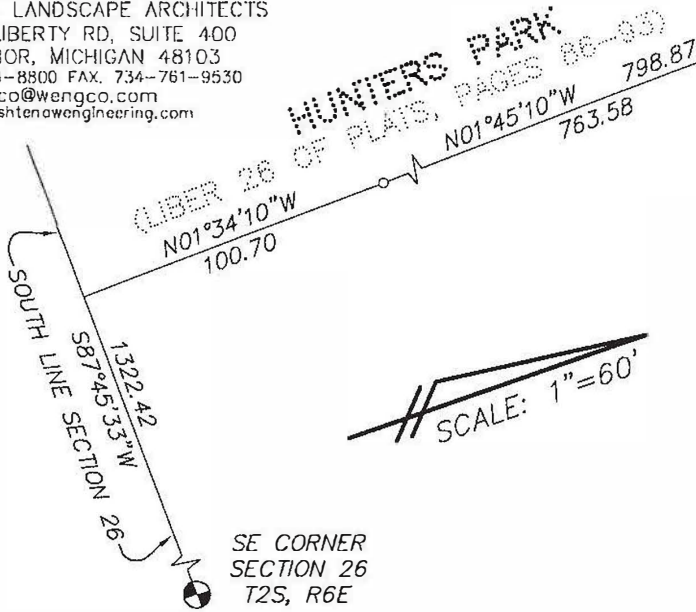
PREPARED BY:

EXHIBIT "A"



**WASHTENAW
ENGINEERING**
COMPANY

CIVIL ENGINEERS * PLANNERS
SURVEYORS * LANDSCAPE ARCHITECTS
3526 W. LIBERTY RD, SUITE 400
ANN ARBOR, MICHIGAN 48103
TEL. 734-761-8800 FAX. 734-761-9530
weco@wengco.com
www.washtenawengineering.com



SCALE: 1"=60'

CURVE TABLE

NO.	DELTA	RADIUS	ARC	CHORD	CHORD BEARING
1	47°49'01"	15.50	12.94	12.56	N42°54'20"E
2	89°57'42"	22.50	35.33	31.81	S68°12'18"E
3	53°53'44"	24.50	23.05	22.21	S50°10'19"E
4	05°54'25"	15.50	1.60	1.60	S74°09'59"E
5	43°19'36"	20.50	15.50	15.14	S49°32'58"E
6	43°06'31"	9.50	7.15	6.98	S49°26'25"E

PROFESSIONAL SURVEYOR NO. 24620

CLIENT: CITY OF ANN ARBOR

SECTION 26
TOWN 2 SOUTH * RANGE 6 EAST
CITY OF ANN ARBOR

WASHTENAW COUNTY * MICHIGAN

DATE 7-18-18	REV. 9-5-18
DRAWN DJH	JOB 32352
CHECK TLS	F.B. -
SHEET 1 OF 2	FILE NO. R-10437

HIGH ORCHARD
LIBER 24 OF PLATS,
PAGES 28-30
N01°42'21"W 1469.53
1434.25

POINT OF BEGINNING

GEDDES ROAD (66 FT. WD.)

N'LY R.O.W. LINE

N71°00'10"W

VARIABLE WIDTH

N71°00'10"W

