

Developing Regional Solutions

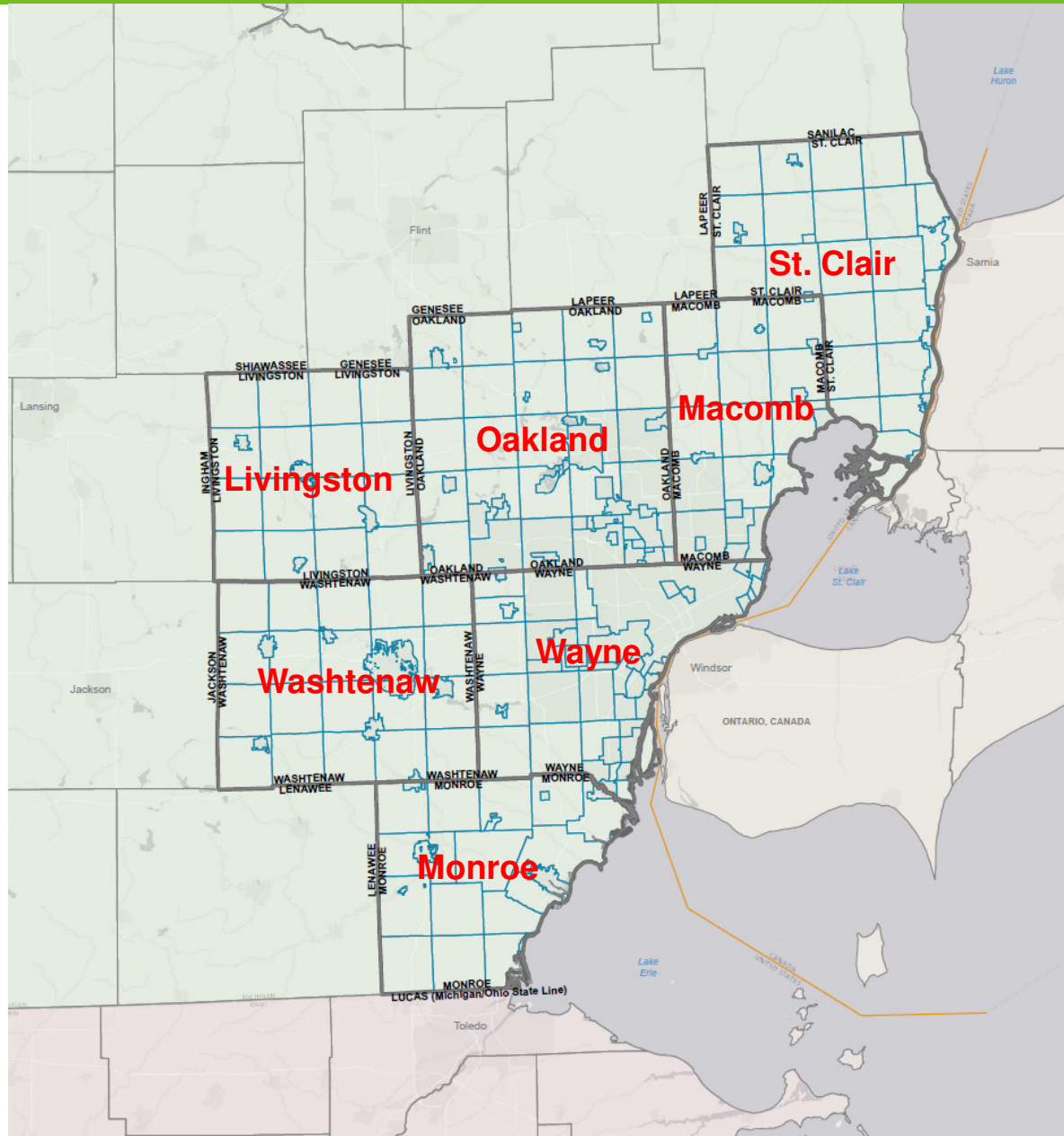


SEMCOG

Southeast Michigan Council of Governments

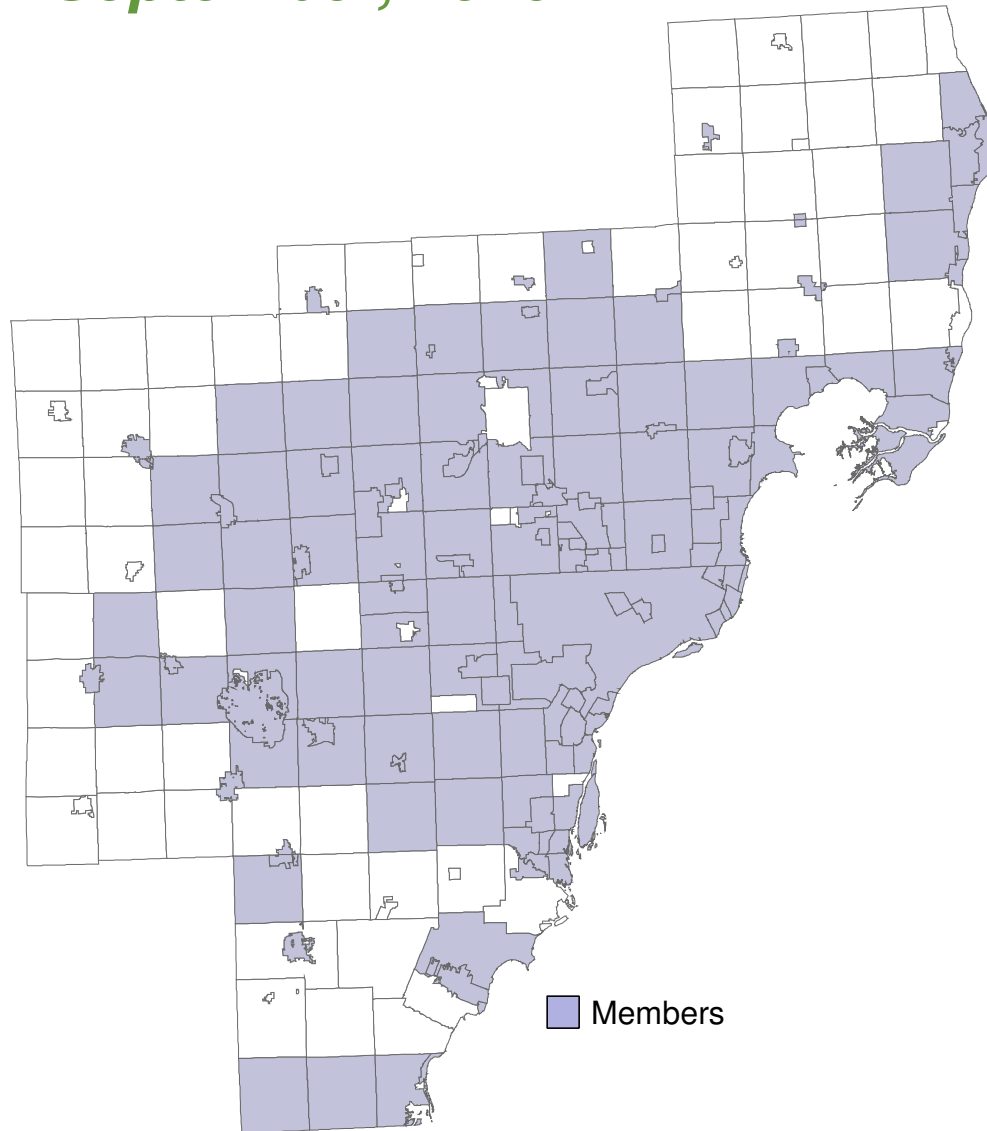


SEMCOG Region



Membership Map

September, 2016



Education Members

Livingston Educational Service Agency
Macomb Community College
Macomb Intermediate School District
Monroe County Community College
Monroe County Intermediate School District
Oakland Schools
Schoolcraft College
St. Clair County Community College
Washtenaw Community College
Washtenaw County Intermediate School District
Wayne County Community College District
Wayne County Regional Education Service Agency

Associate Members

University of Michigan, Dearborn

General Assembly

- Thursday, October 13, 11:30 -4:00
MSU Management Education Center
Troy
- Breakout sessions on Economic
Development, Non-motorized Planning
- Data and maps for Local Planning,
Green Infrastructure and Education

Member Engagement



Water Resources Task Force

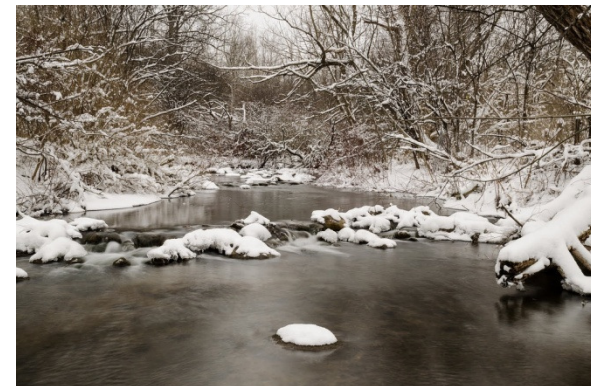
- Water Resources Plan Outcomes
 - Guides SEMCOG Implementation Activities
 - Sets long-term goals
 - Identifies Partnership Opportunities



Stakeholder Input Session

- Washtenaw County
September 27
9:30-11:30 am

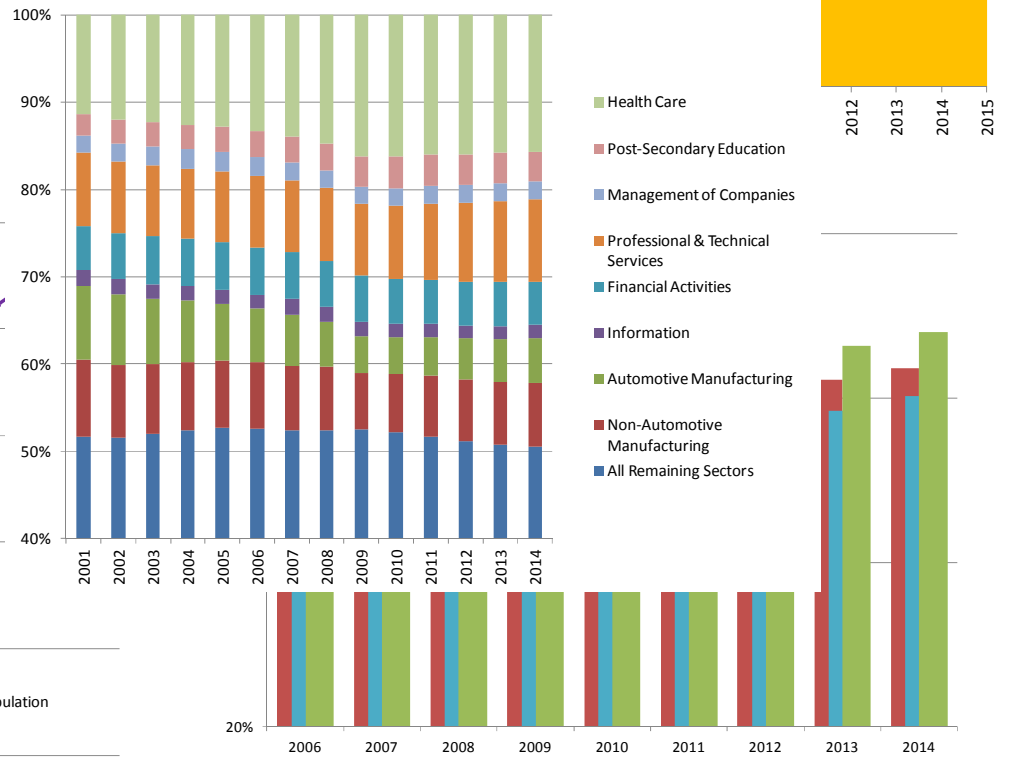
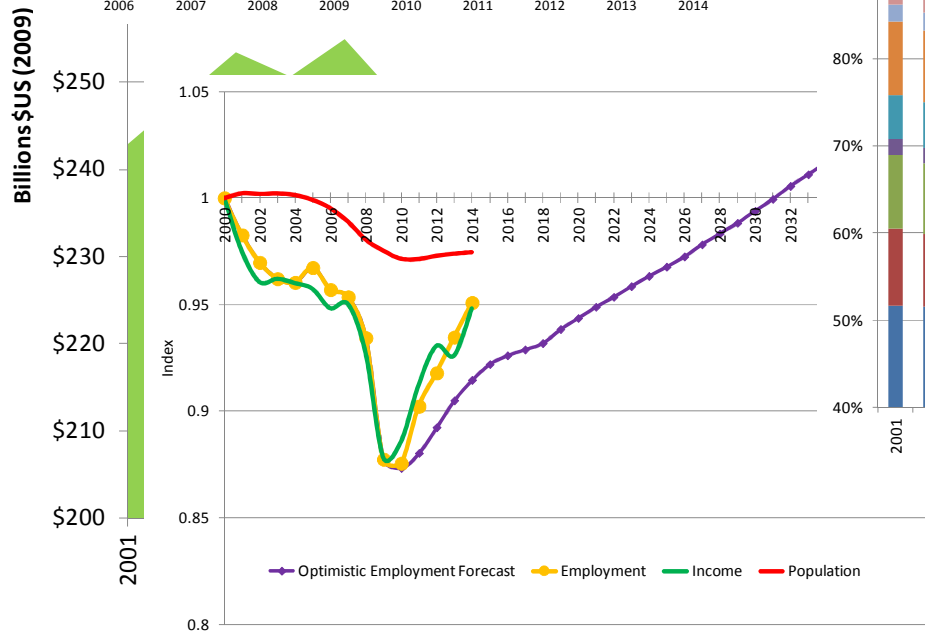
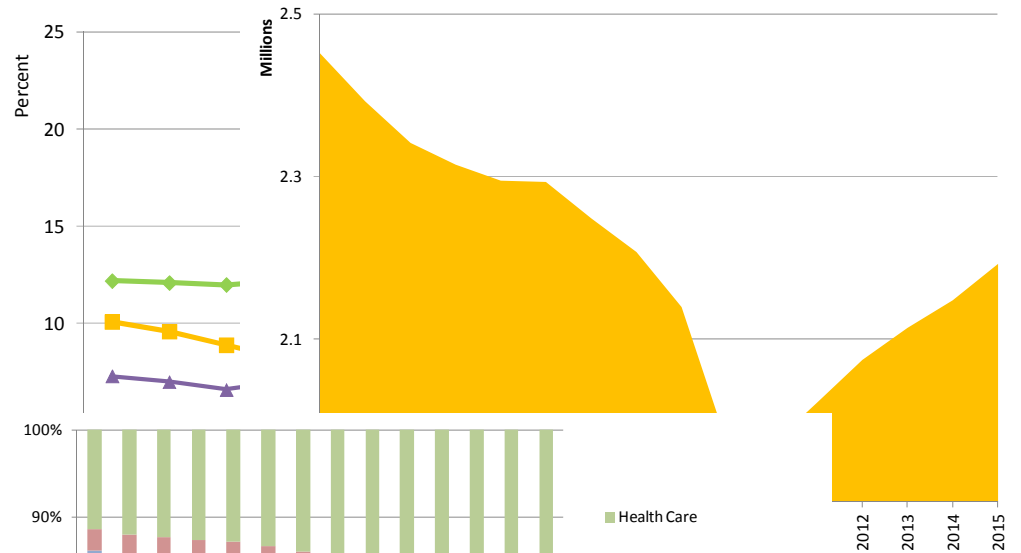
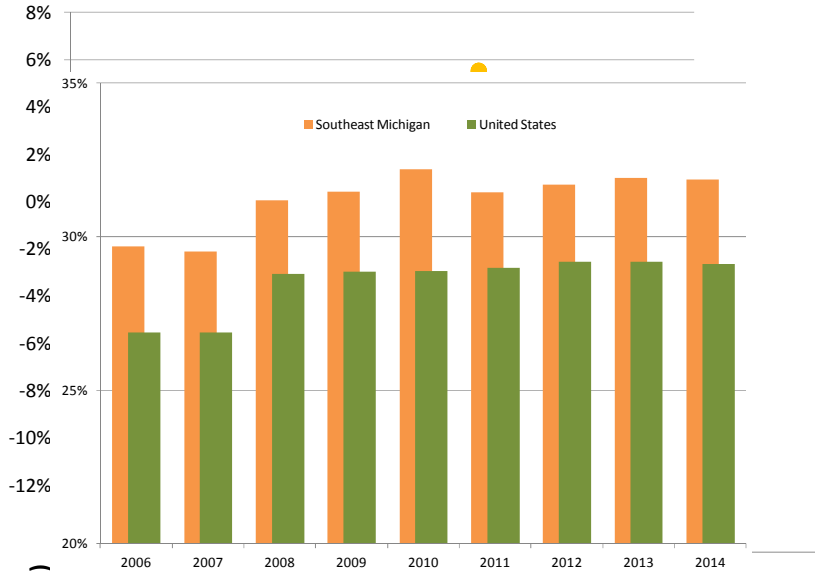
Cobblestone Farm
Ann Arbor



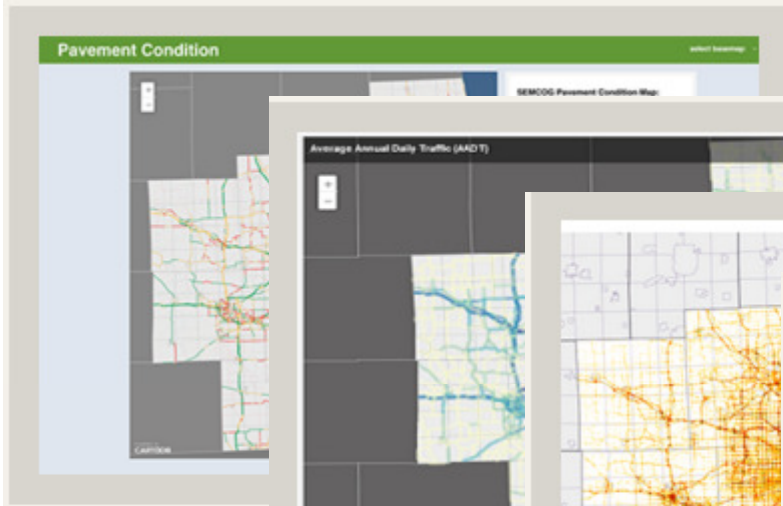
Developing Regional Policy



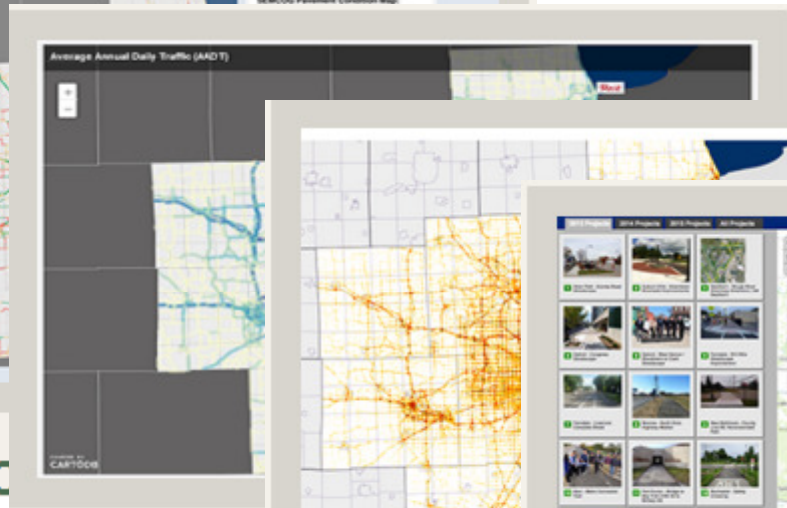
Latest trends



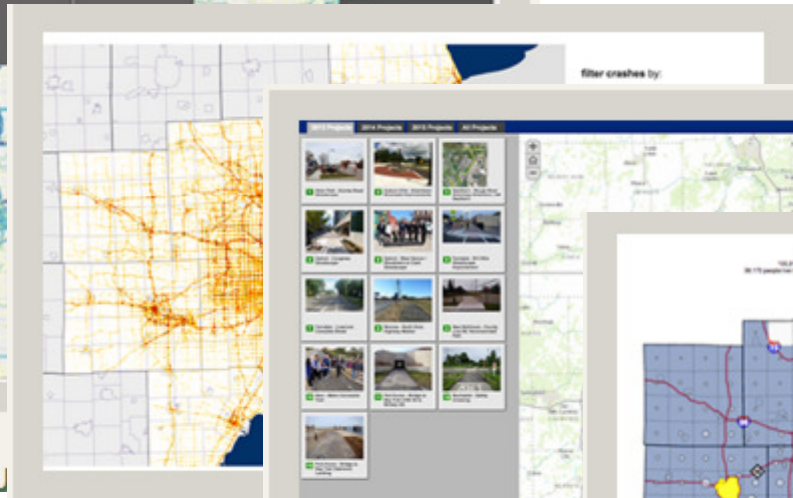
Interactive Maps



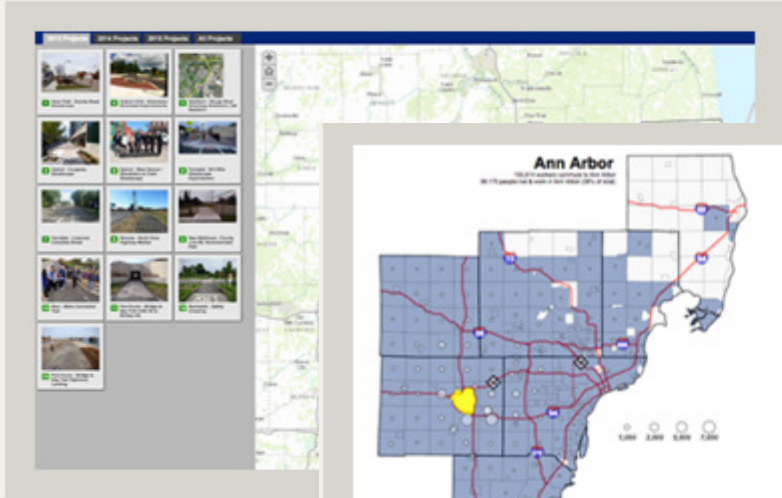
Pavement C



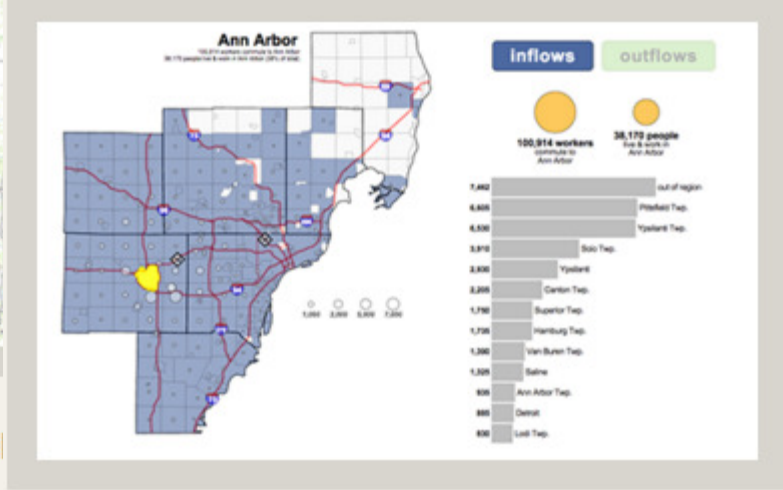
Traffic Volu



Crash Loca



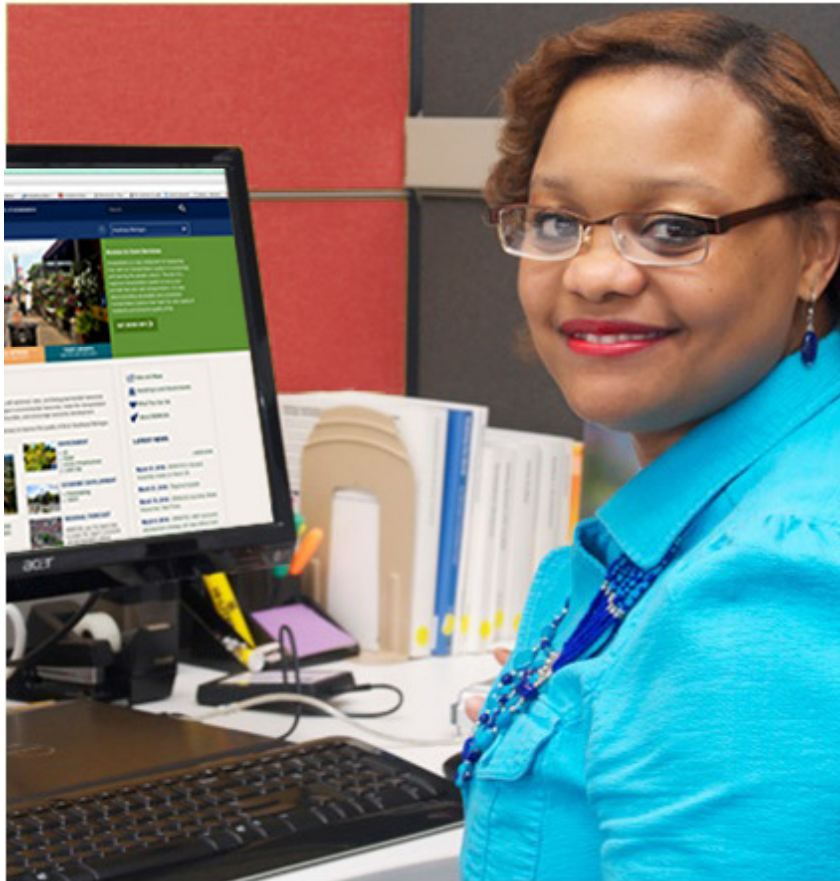
Transportatio
Program (TAP



Commuting Patterns

and more...

Stephanie Taylor, Information Officer



Taylor@semcog.org
(313) 324-3330

Community Input



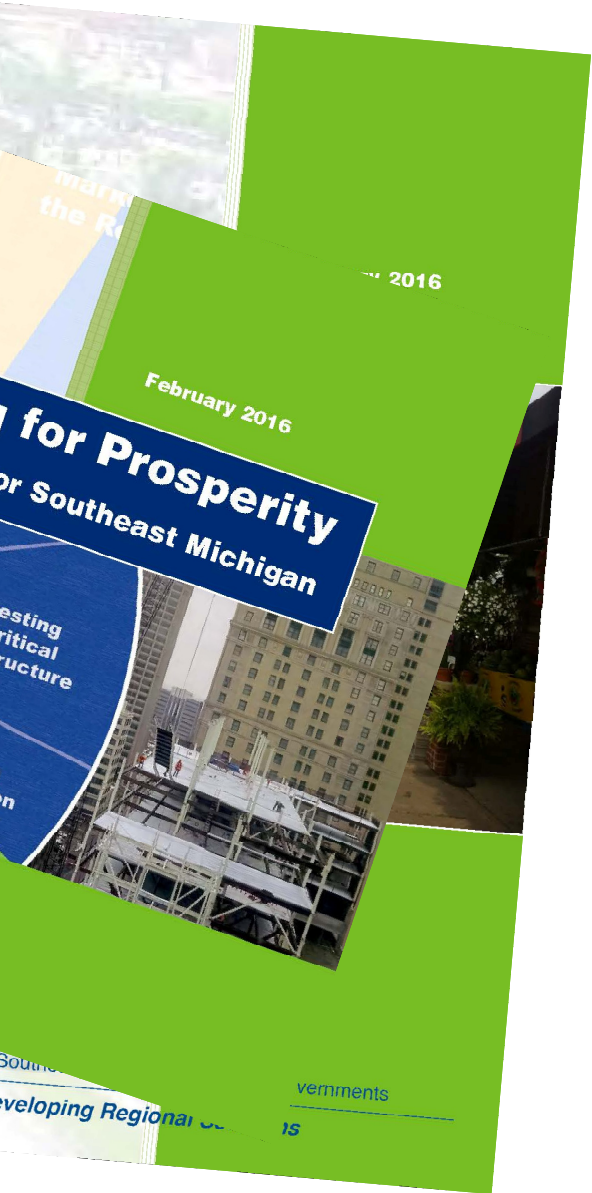
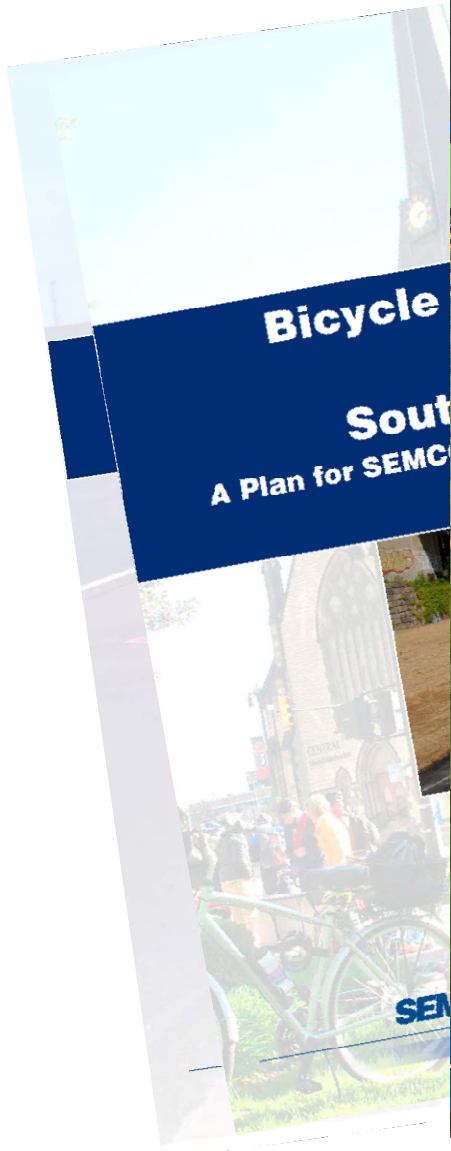
Advocacy



Transportation



Recent Plans Provide Direction for the Region



TRAFFIC SAFETY PLAN

December 2015

Southeast Michigan Traffic Safety Plan



SEMCOG

Southeast Michigan Council of Governments

Developing Regional Solutions

SEMCOG

Southeast Michigan Council of Governments

Developing Regional Solutions

Coordination & Data

SEMCOG | SOUTHEAST MICHIGAN COUNCIL OF GOVERNMENTS

Crash Location

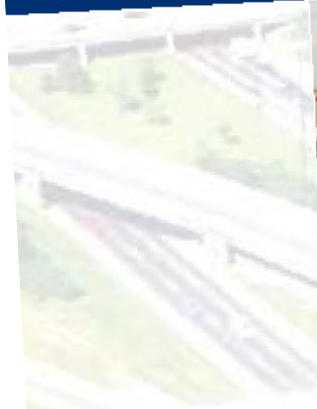


Crash severity:

- **Fatal** fatal injury
- **A-Level** incapacitating injury
- **B-Level** visible, non-incapacitating injury
- **C-Level** possible injury
- **PDO** \$1,000+ in property damage

January 2016

Access to Core Services in Southeast Michigan



SEMCOG

Southeast Michigan Council of Governments

Developing Regional Solutions

SEMCOG

Southeast Michigan Council of Governments

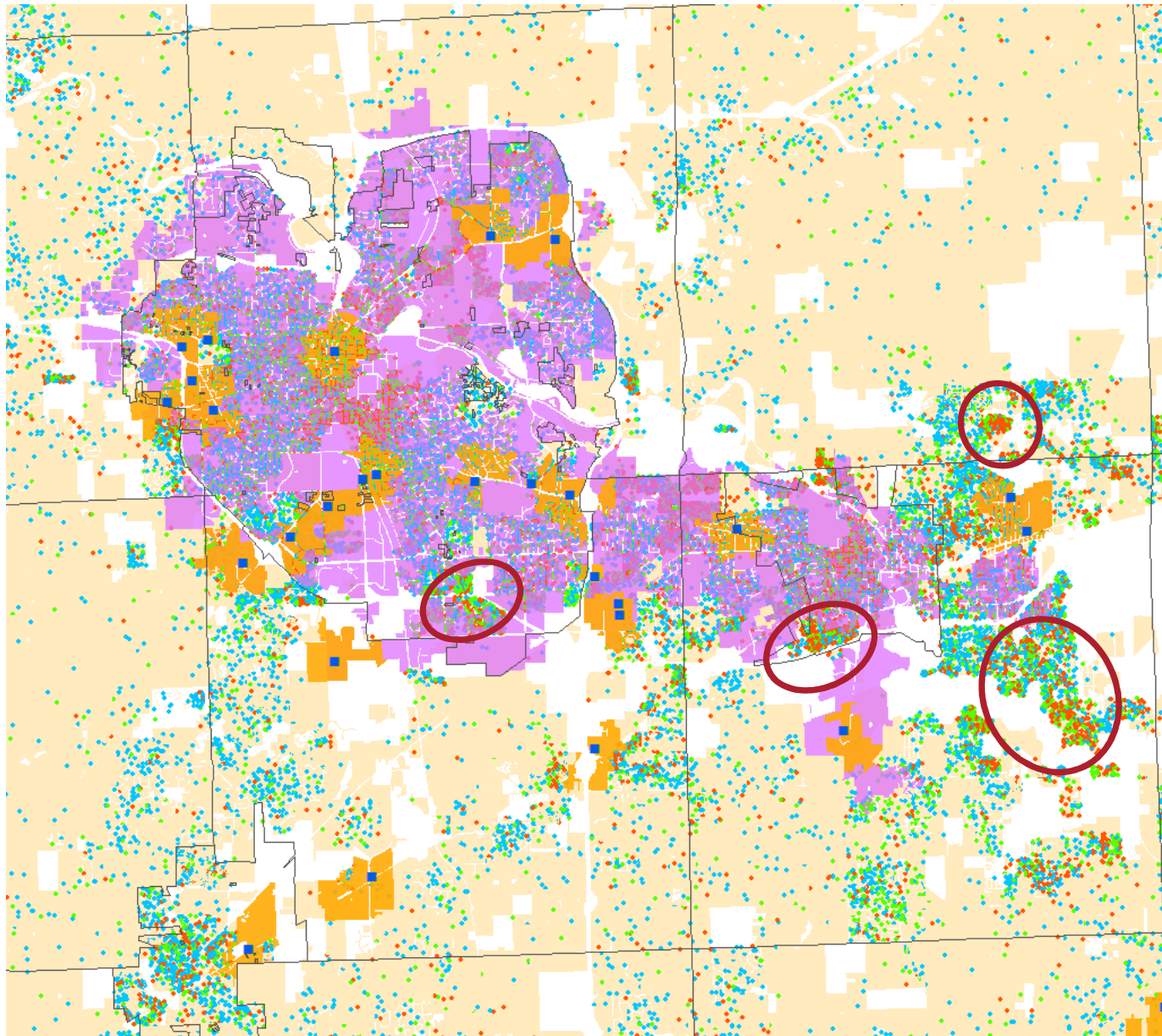
Developing Regional Solutions

Addressing Accessibility Gaps



Access to Supermarkets

Gaps in Ann Arbor / Ypsilanti area



- Supermarkets
- 10 min. (0.5 mile) Walkshed
- 30 min . Transit Travelshed
- Households in Poverty
- Transit Dependent Households
- Households with Seniors
- 1 Dot = 2 HH

BICYCLE & PEDESTRIAN TRAVEL PLAN

November 2014

Bicycle and Pedestrian Travel Plan for Southeast Michigan: A Plan for SEMCOG and MDOT's Southeast Michigan Regions



SEMCOG

Southeast Michigan Council of Governments

Developing Regional Solutions

SEMCOG

Southeast Michigan Council of Governments

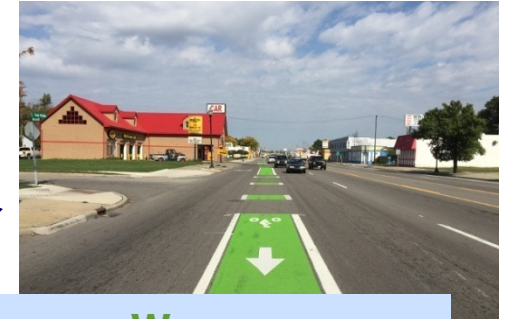
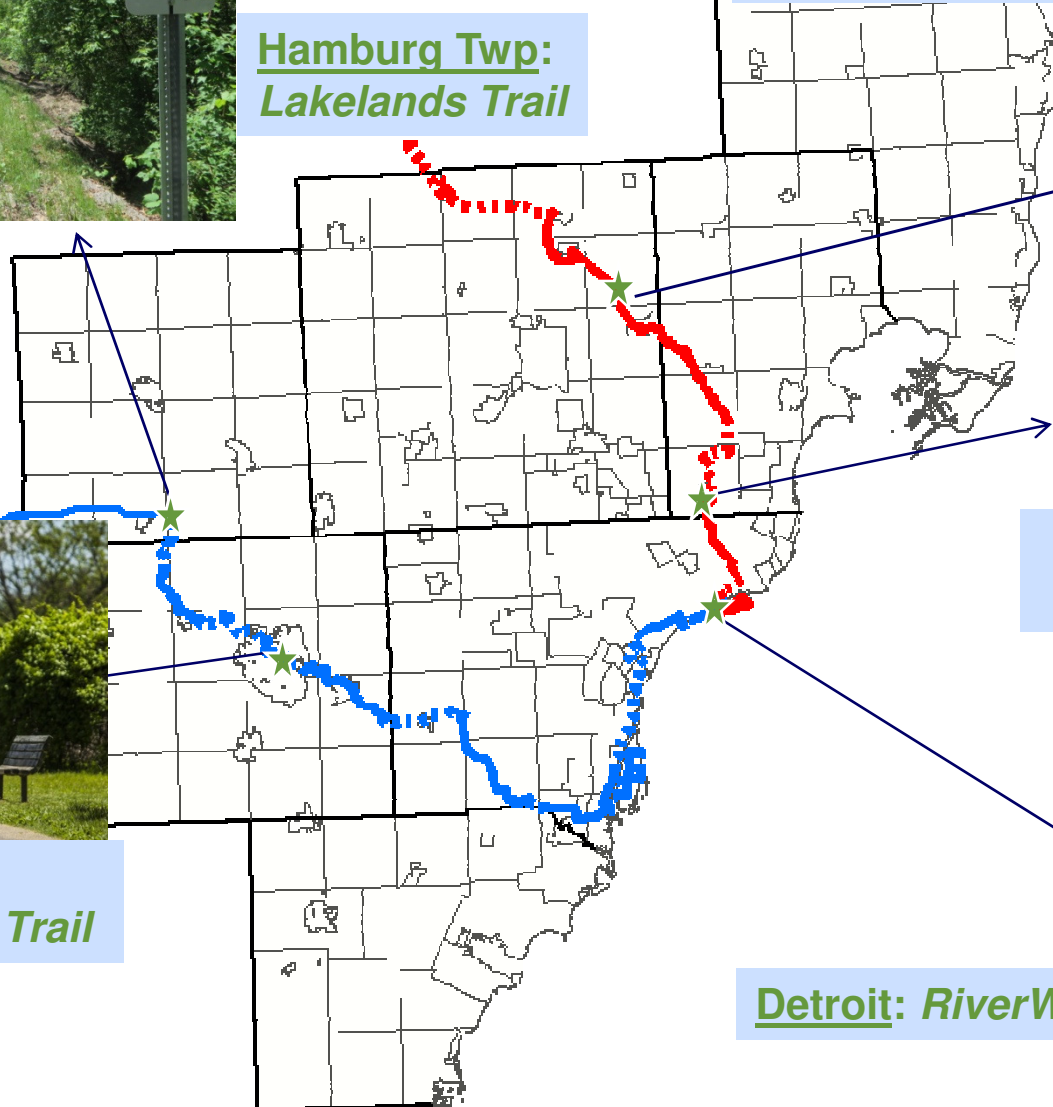
Developing Regional Solutions

Iron Belle Trail: Southeast Michigan

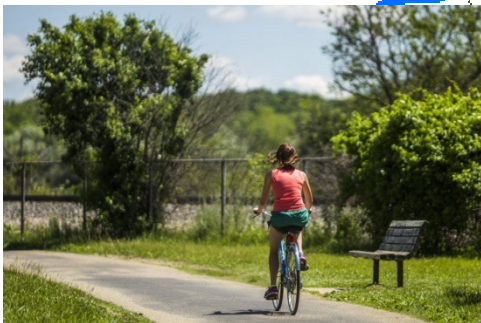


Hamburg Twp:
Lakelands Trail

Oakland Twp:
Paint Creek Trail



Warren:
Van Dyke Bike Lanes



Ann Arbor:
Border to Border Trail



Detroit: *RiverWalk*

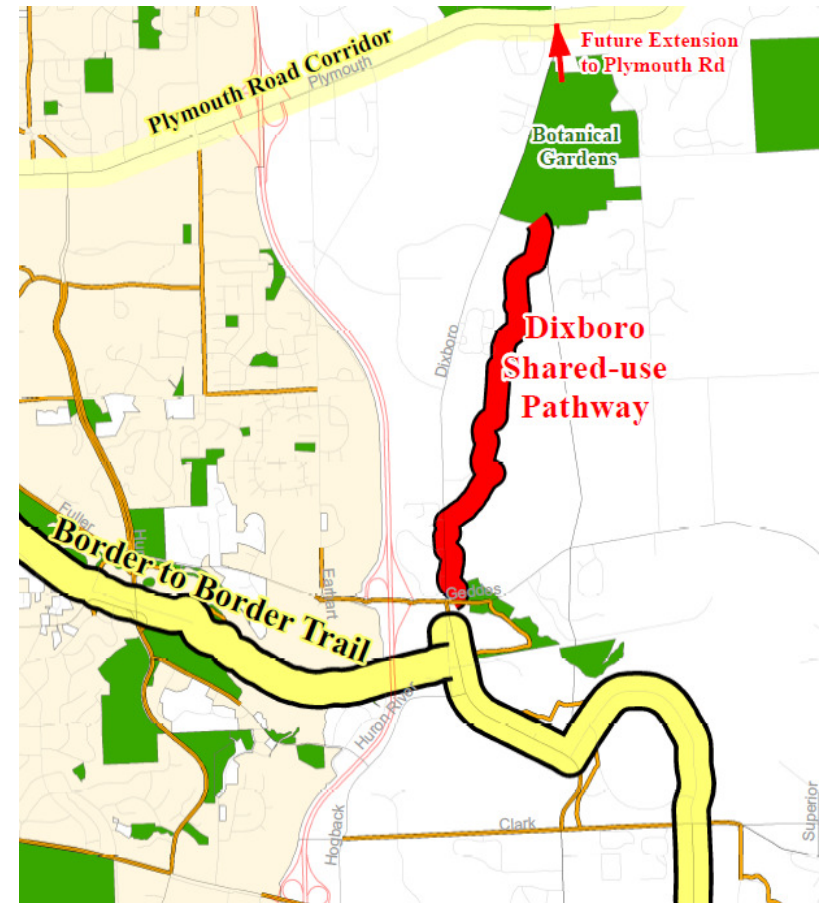
Examples of Funded Projects

Gallup Park Enhancements

- Widening existing trail from 8 to 10 feet (14' wide boardwalks)
- Improving safety, including barrier free access
- Bike parking & wayfinding signage
- Major connector for Iron Belle Trail

Dixboro Rd Shared-Use Path

- 1.5 mile trail (10' wide; with 14' wide boardwalks)
- Connects to the Botanical Gardens

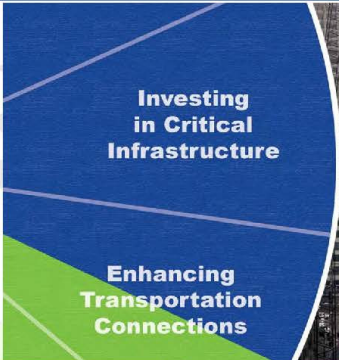




February 2016

Partnering for Prosperity

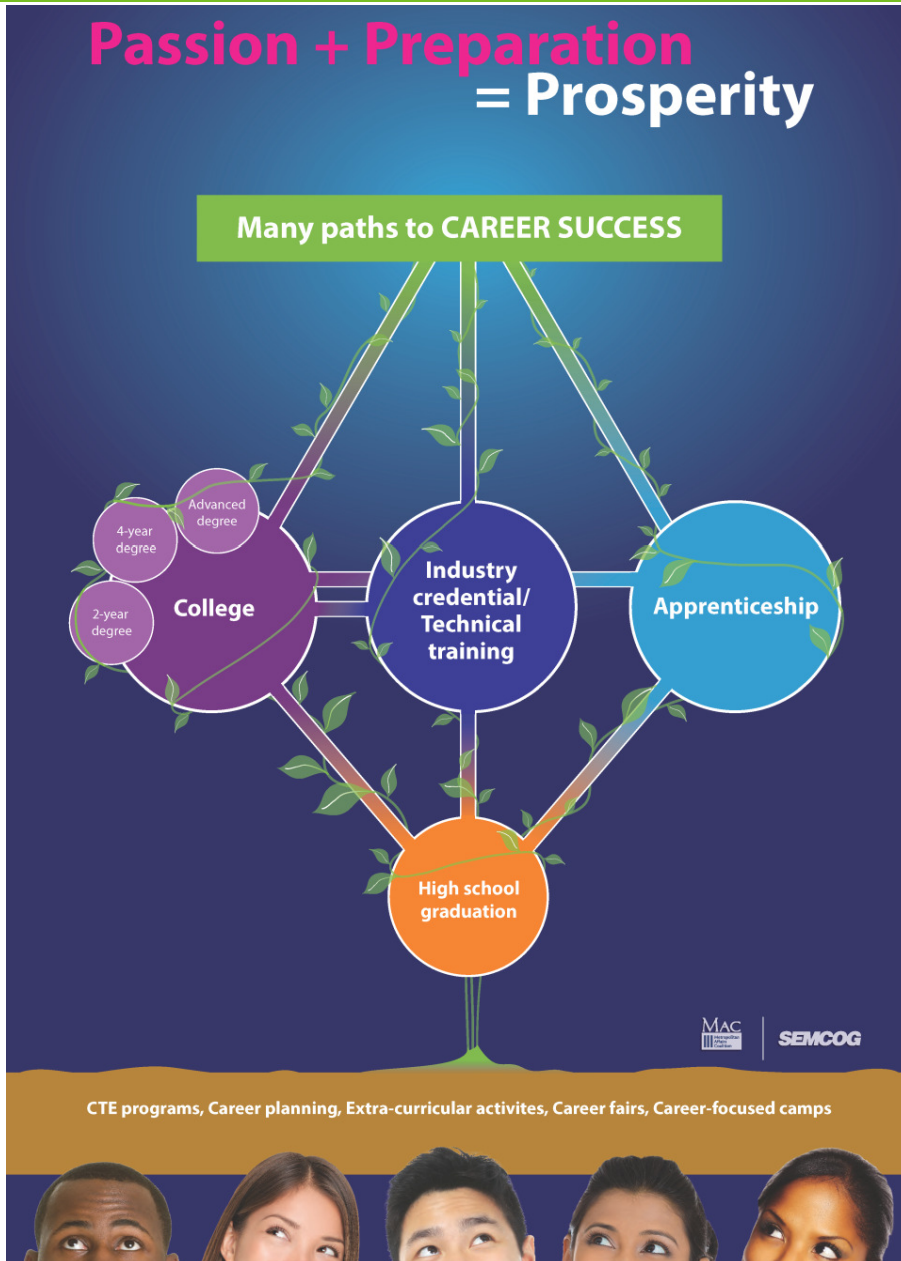
Economic Development Strategy for Southeast Michigan



SEMCOG / Southeast Michigan Council of Governments
Developing Regional Solutions

MAC Metropolitan
 Affairs Coalition
 IMPROVING QUALITY OF LIFE AND CREATING
 ECONOMIC OPPORTUNITY THROUGH
 REGIONAL COOPERATION

Skilled trades and technical careers



Green infrastructure



May 2014

Green Infrastructure Vision for Southeast Michigan

SEMCOG / Southeast Michigan Council of Governments
Developing Regional Solutions

Chapter 4

Connectivity of the Green Infrastructure Network



Aristotle stated, *The whole is greater than the sum of its parts*. Nowhere is that more true than with green infrastructure. Throughout this vision, we discuss the green infrastructure network. That's because the connection of different green infrastructure elements – parks, preserves, riparian corridors, wetlands – is critical to maintaining the ecological processes (e.g., filtering stormwater, cleaning water and urban air); maintaining the health and biodiversity of wildlife populations and reducing habitat fragmentation; and providing recreation opportunities for residents and visitors to Southeast Michigan.

Stakeholders attending the Green Infrastructure Visioning Sessions, as well as those participating in the public poll, also noted the importance of connectivity. Both stakeholders and the public said bike/hike trails are the green infrastructure element they want to see increased; stakeholders noted the top place they want to see more green infrastructure is along rivers and lakes.

The public stated that who owns the network is not as important as coordinated recreational use. In Southeast Michigan, local communities, land conservancies, utility companies, counties, regional entities (such as Huron Clinton Metropolitan Authority), the state, and federal agencies

all own pieces of the green infrastructure network. Partnerships among these organizations can result in more integrated management of the system as a whole.

This chapter looks at the important role green infrastructure connectivity plays in Southeast Michigan's vision, specifically,

- Riparian corridors as a mechanism for connectivity,
- Connecting green infrastructure through restoration,
- Trails providing opportunities for linkages and enjoyment, and
- Southeast Michigan as a major pathway for migration.

Regional Policies

Connect natural areas, recreation areas, and riparian corridors to the extent possible as a mechanism to reduce habitat fragmentation, enhance wildlife passage, and encourage recreation opportunities.

The green infrastructure network should be approached as a system, regardless of ownership. Local, regional, state, federal, and private owners of the network should coordinate activities in order to provide an efficient, systems-based approach.

Developing Regional Solutions



SEMCOG

Southeast Michigan Council of Governments

