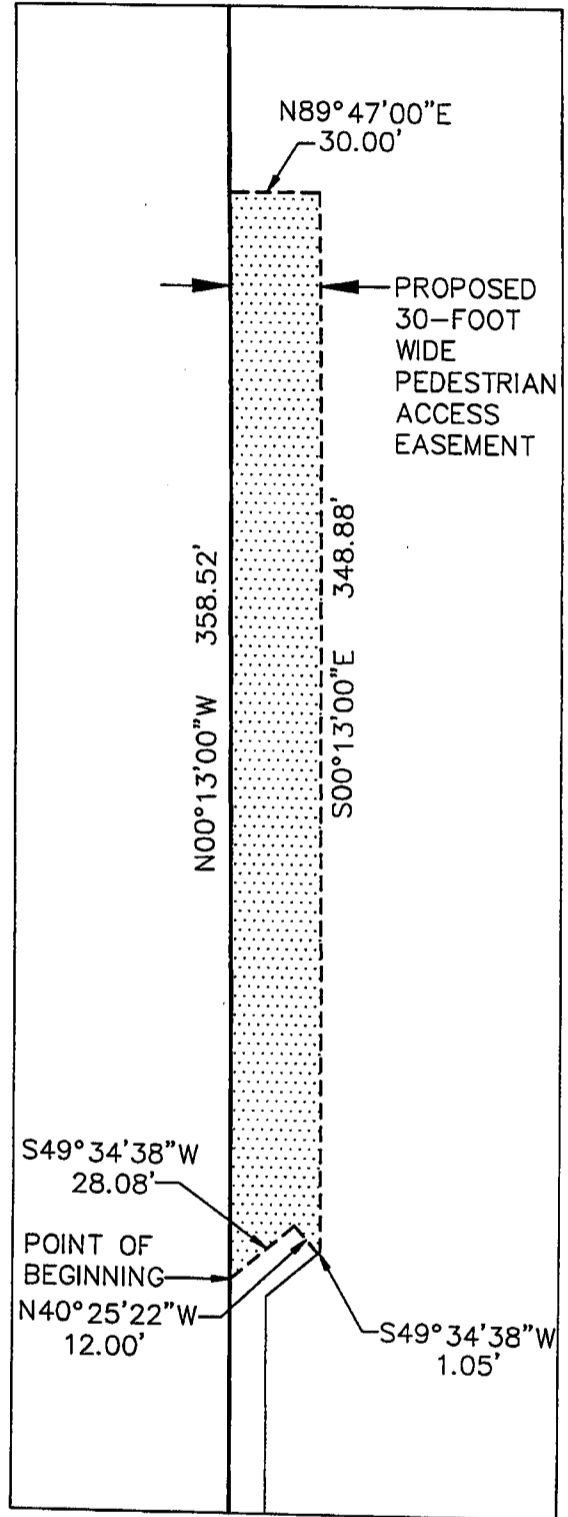
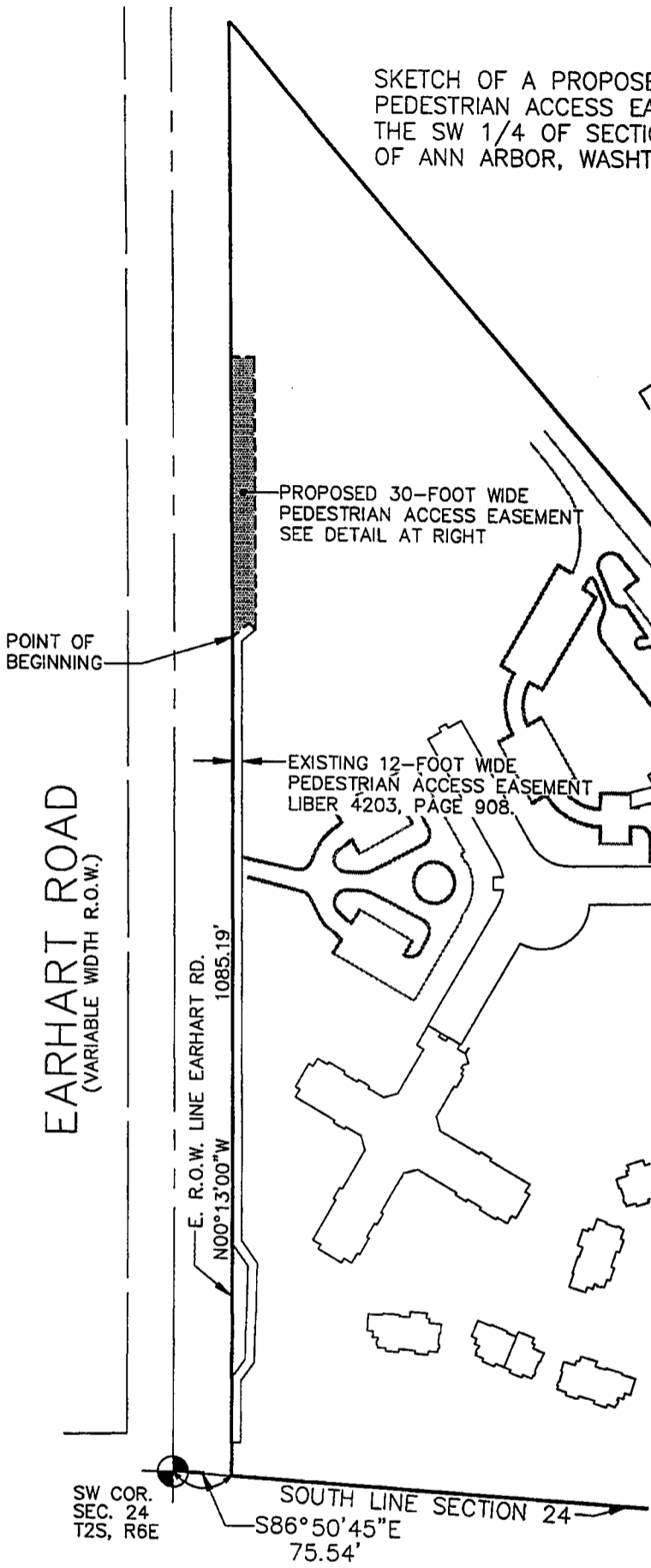


SKETCH OF A PROPOSED 30-FOOT WIDE PEDESTRIAN ACCESS EASEMENT LOCATED IN THE SW 1/4 OF SECTION 24, T2S, R6E, CITY OF ANN ARBOR, WASHTENAW COUNTY, MICHIGAN

DETAIL
SCALE: 1"=60'



CLIENT: GLACIER HILLS	DATE: 10/07/10
JOB NO.: 09215	SHEET 1 OF 2
SECTION: 24 TWN: 2S. RANGE: 6E.	SCALE: 1in. = 200 ft.
CITY OF ANN ARBOR	BOOK:
WASHTENAW COUNTY, MICHIGAN	BY: PK



MIDWESTERN CONSULTING



Civil, Environmental and Transportation Engineers
Planners, Surveyors
Landscape Architects

3815 Plaza Drive
Ann Arbor, Michigan 48108
Phone: 734.995.0200
Fax 734.995.0599

Patrick L. Hastings