

US-23 (I-94 to M-14) Improvement Project Study

City of Ann Arbor Parks Advisory Commission



February 27, 2024

PROJECT SCOPE

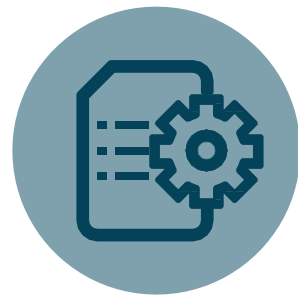
PROJECT STUDY AREA:

US-23 from I-94/US-23 interchange area north to east M-14/US-23 interchange area in the City of Ann Arbor, Pittsfield Township, and Ann Arbor Township in Washtenaw County.

THIS PROJECT INCLUDES THE PREPARATION OF:



Environmental Assessment



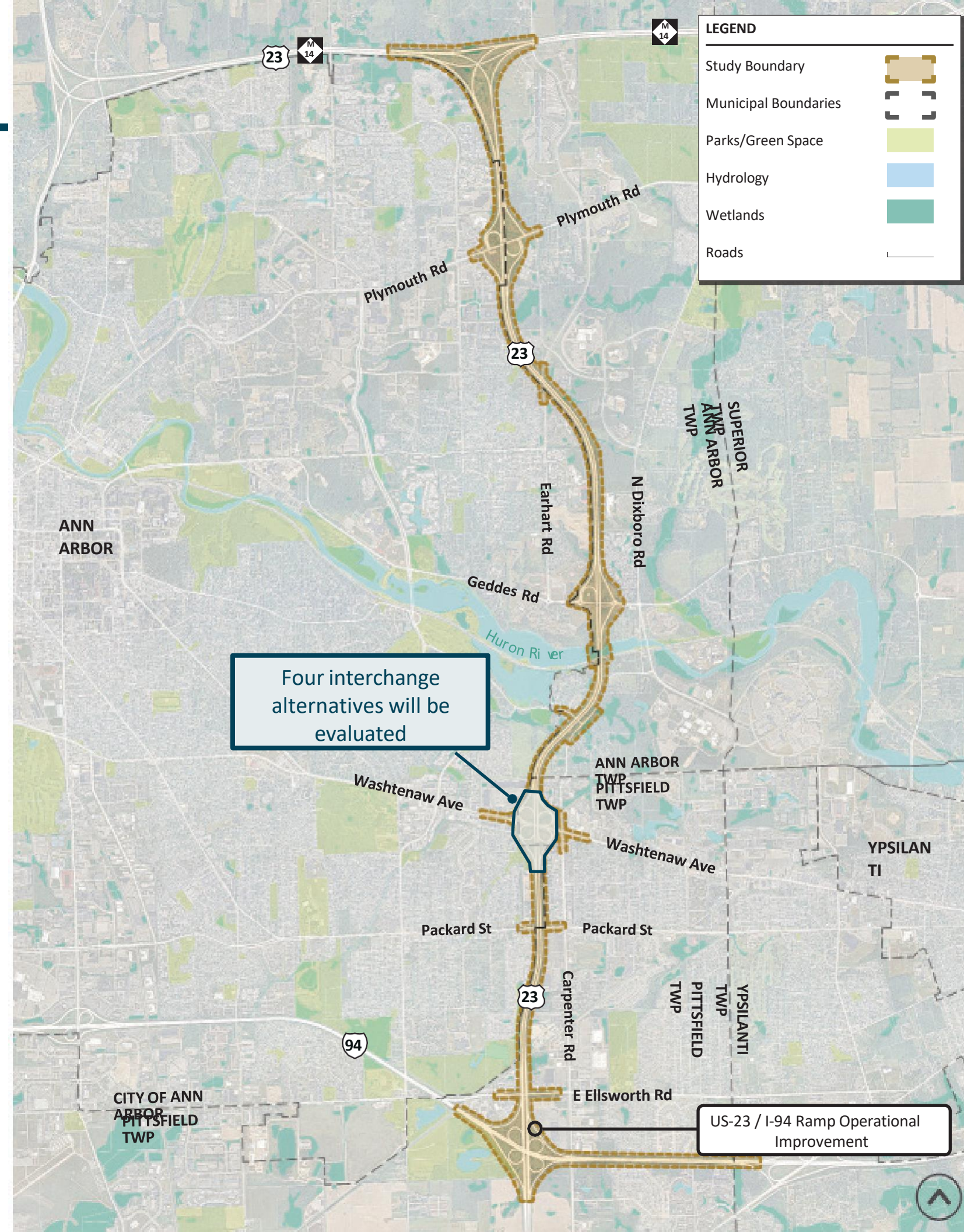
Development Studies



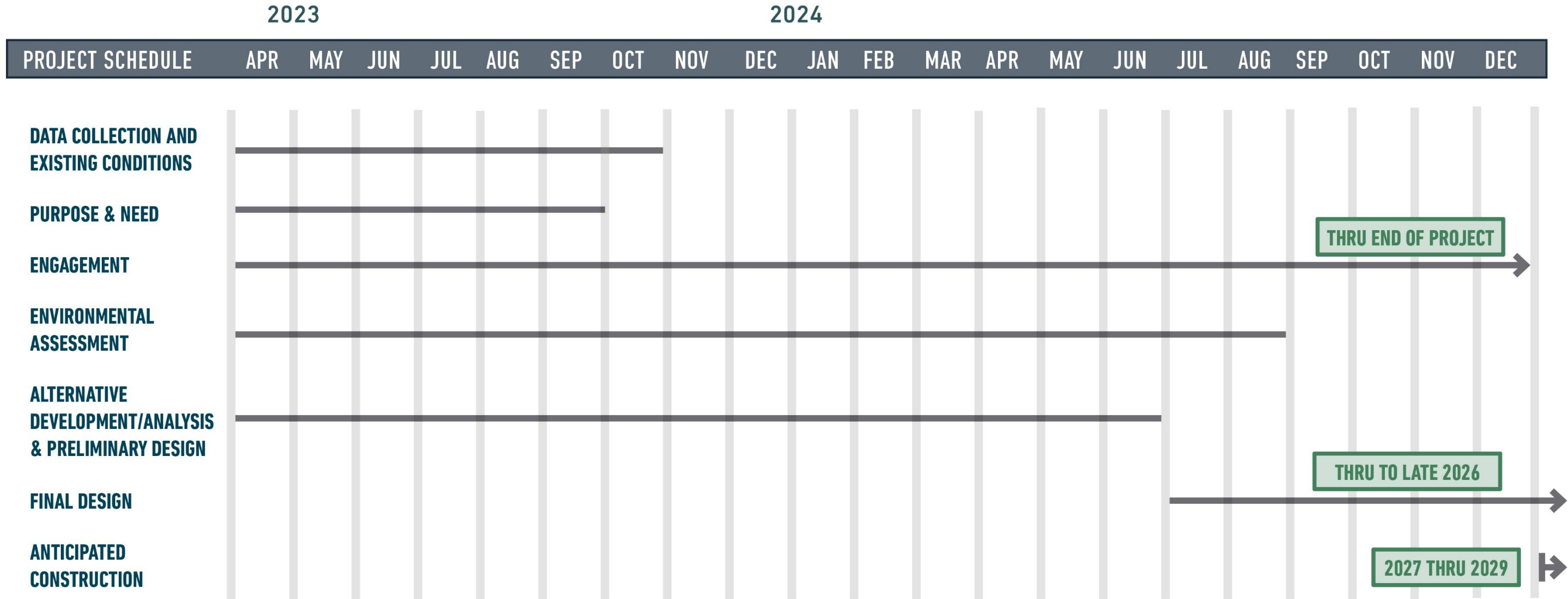
Road & Bridge Design

Our team is coordinating with the other MDOT efforts, including the two ongoing Planning & Environmental Linkage Studies, in the area.

- M-17 Washtenaw Ave PEL
- M-14 Barton Drive Interchange PEL Study



PROJECT SCHEDULE



BORDER TO BORDER (B2B) TRAIL AREA MAP



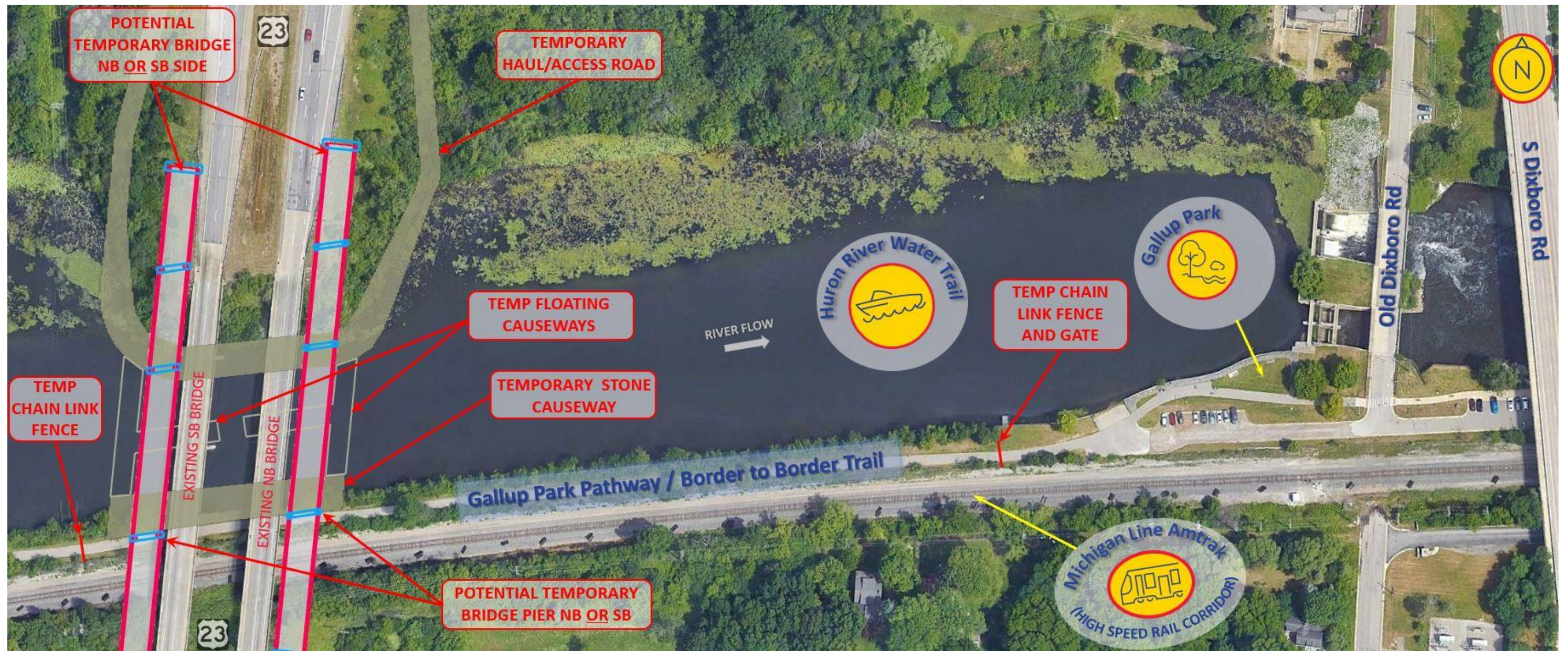
GALLUP PARK / B2B TRAIL IMPACT

- Replacement of the US-23 bridges over the Huron River and Gallup Park pathway will result in unavoidable temporary impacts
- Federal funds were used for construction of the pathway so federal procedures must be followed for the US-23 project environmental clearance process
- Ongoing coordination with affected agencies, including:
 - City of Ann Arbor Parks
 - Washtenaw County Parks
 - Michigan Department of Natural Resources (MDNR)
 - Federal Highway Administration (FHWA)
 - Michigan Dept of Environment, Great Lakes, and Energy (EGLE)
 - National Park Service (NPS)
- We are exploring various construction site access plans to minimize impacts and durations of closures to both the trail and the waterway
- A public meeting for the impacts will be required as part of the environmental process.
- The City will need to provide final sign-off for the 4(f) review for the trail impact, NPS will sign-off for the 6(f) temporary non-conforming use and MDNR will sign-off for the water trail impact



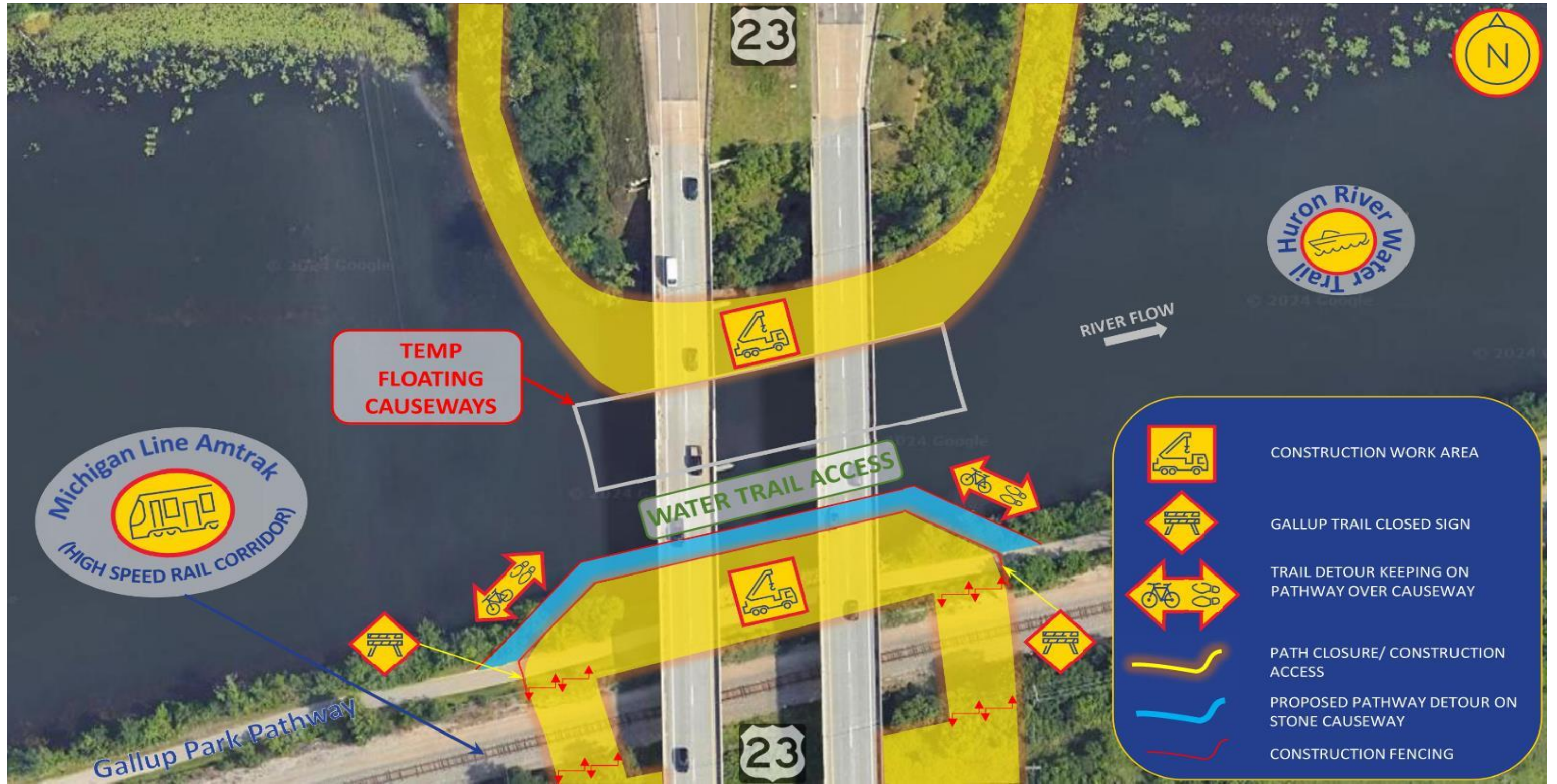
INITIAL CONCEPT FOR PATH CLOSURE AND CONSTRUCTION ACCESS

- Discussed with Ann Arbor and Washtenaw County Parks & Recreation Departments on November 3, 2023
- Close the pathway between the bridge and the parking area near Old Dixboro
- Utilize the trail for construction access between Old Dixboro Road and the US-23 bridge
- Would require the pathway to be closed during the construction season and could be re-opened during winter shutdown. Approximately 9 months closed and 3 months open. National Park Service would not classify this as being a de-minimis impact due to the duration of impact.
- No reasonable detour routes for pathway traffic (E Huron River Drive not suitable, Geddes Rd not suitable, Huron Parkway to Glazier Way is a lengthy detour)



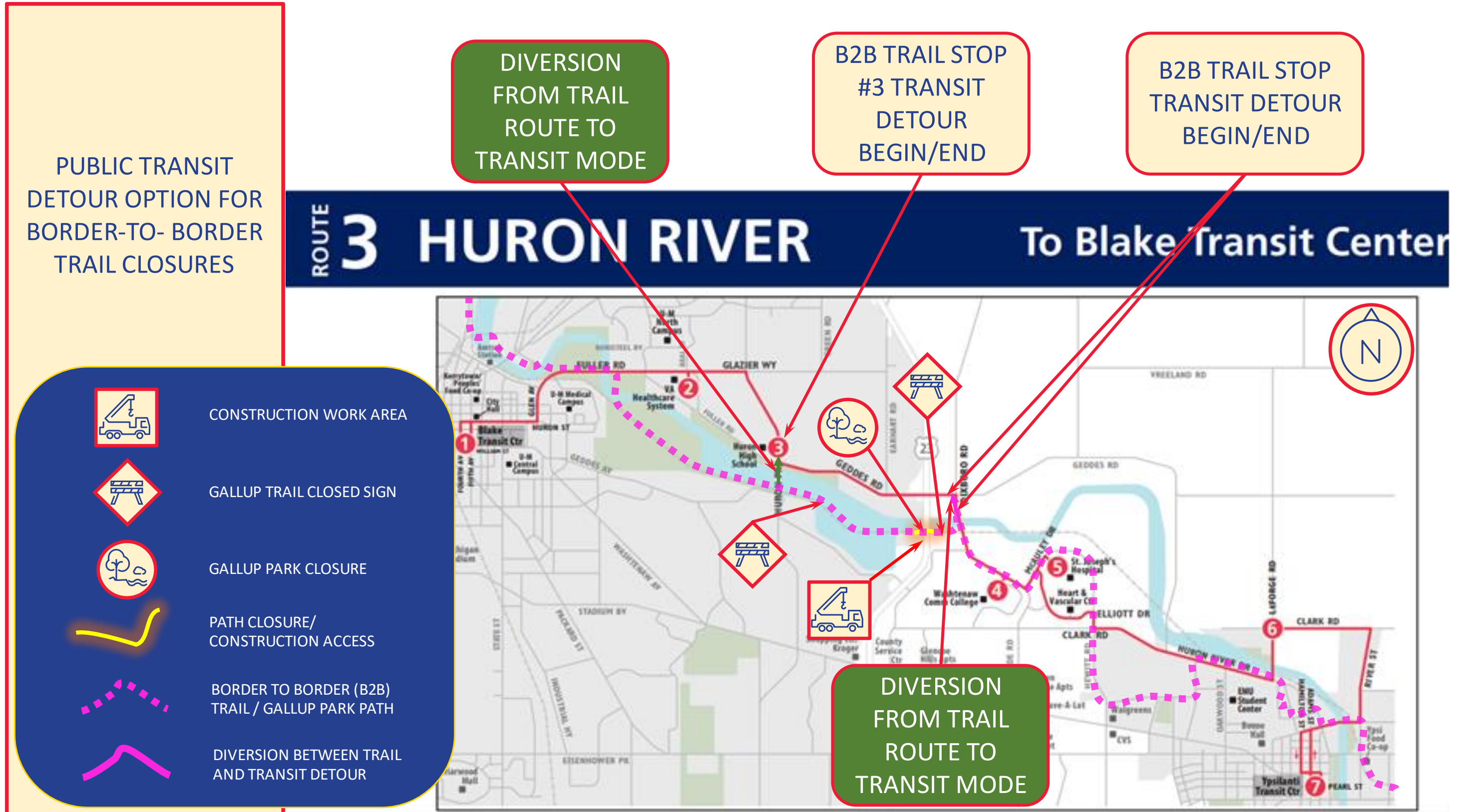
CURRENT CONCEPT FOR TRAIL DETOUR & CONSTRUCTION ACCESS

- Temporary haul/access roads from the south (requires Railroad approval of temporary crossings for haul road)
- Pathway temporarily rerouted out onto causeway bypassing the work area on the south river bank
- Intermittent temporary pathway closures required at various times during the construction season
- Water Trail access maintained between temp causeway and existing bridge piers; intermittent temp closures required



TEMPORARY TRAIL CLOSURE WITH TRANSIT DETOUR

- Divert trail traffic to nearby public transit stops to bypass the closed section of trail
- Met with The Ride to discuss the concept; continue coordination to work out the details
- FHWA has approved use of project funding for short term transit detour



TEMPORARY TRAIL CLOSURE WITH TRANSIT DETOUR

WEST END OF
PATHWAY DETOUR
TO/FROM PUBLIC
TRANSIT

USE EXISTING ROUTE
#3 TRANSIT STOPS

BUS STOP
IMPROVEMENTS
NEEDED FOR
EASTBOUND TRANSIT
STOP ALONG GEDDES

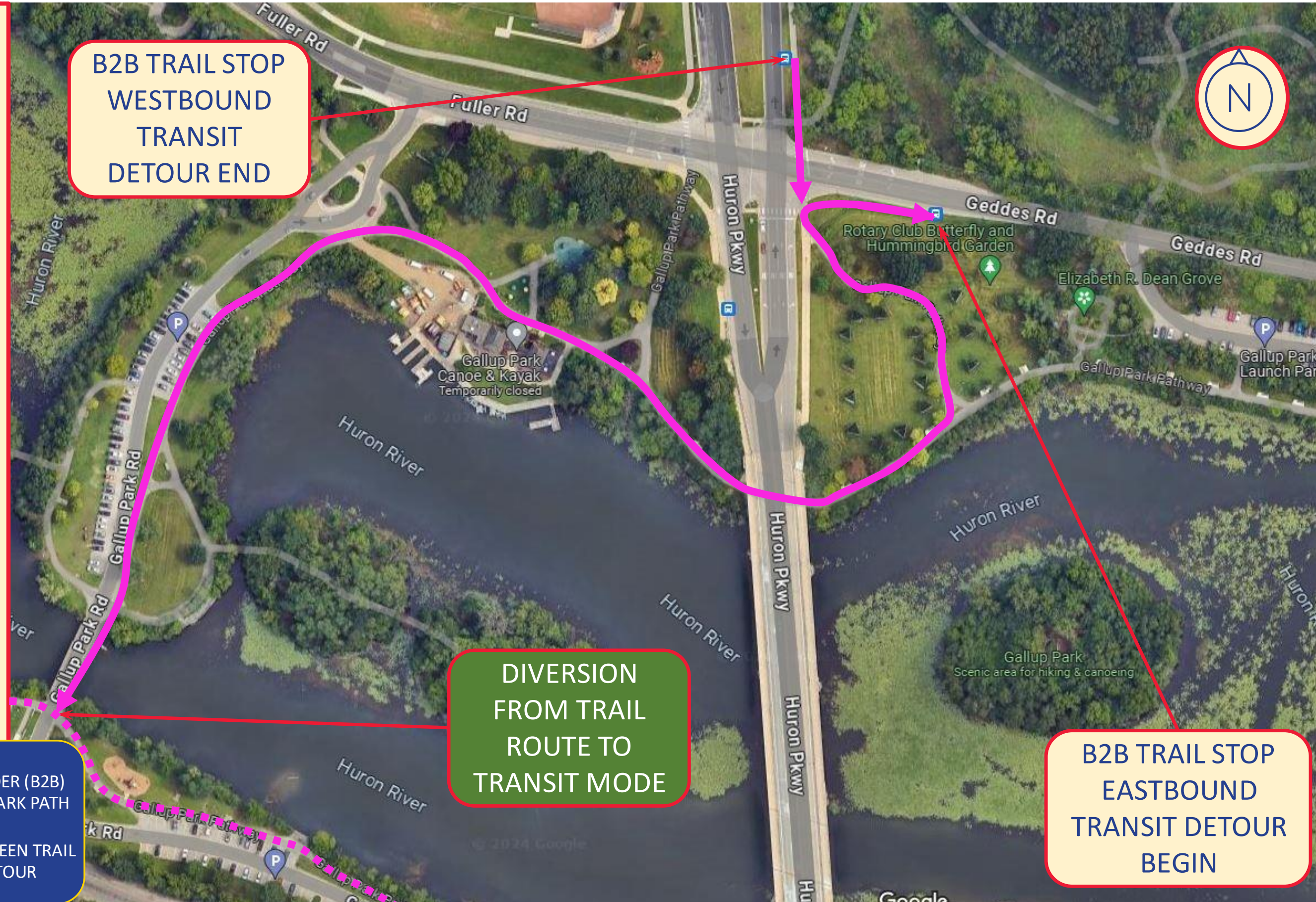
B2B TRAIL STOP
WESTBOUND
TRANSIT
DETOUR END


DIVERSION
FROM TRAIL
ROUTE TO
TRANSIT MODE


B2B TRAIL STOP
EASTBOUND
TRANSIT DETOUR
BEGIN

BORDER TO BORDER (B2B)
TRAIL / GALLUP PARK PATH

DIVERSION BETWEEN TRAIL
AND TRANSIT DETOUR



 BORDER TO BORDER (B2B)
TRAIL / GALLUP PARK PATH

 DIVERSION BETWEEN TRAIL
AND TRANSIT DETOUR

TEMPORARY TRAIL CLOSURE WITH TRANSIT DETOUR

EAST END OF
PATHWAY DETOUR
TO/FROM PUBLIC
TRANSIT

USE EXISTING ROUTE
#3 TRANSIT STOPS

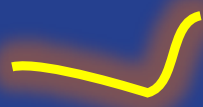
BUS STOP
IMPROVEMENTS
NEEDED FOR
EASTBOUND TRANSIT
STOP ALONG DIXBORO



GALLUP TRAIL CLOSED SIGN



GALLUP PARK CLOSURE



PATH CLOSURE/
CONSTRUCTION ACCESS



BORDER TO BORDER (B2B)
TRAIL / GALLUP PARK PATH



DIVERSION BETWEEN TRAIL
AND TRANSIT DETOUR



B2B TRAIL STOP
WESTBOUND
TRANSIT
DETOUR BEGIN

B2B TRAIL STOP
EASTBOUND
TRANSIT DETOUR
END

DIVERSION
FROM TRAIL
ROUTE TO
TRANSIT MODE

DIVERSION
FROM
WESTBOUND
GALLUP PARK
PATH TO
TRANSIT MODE

