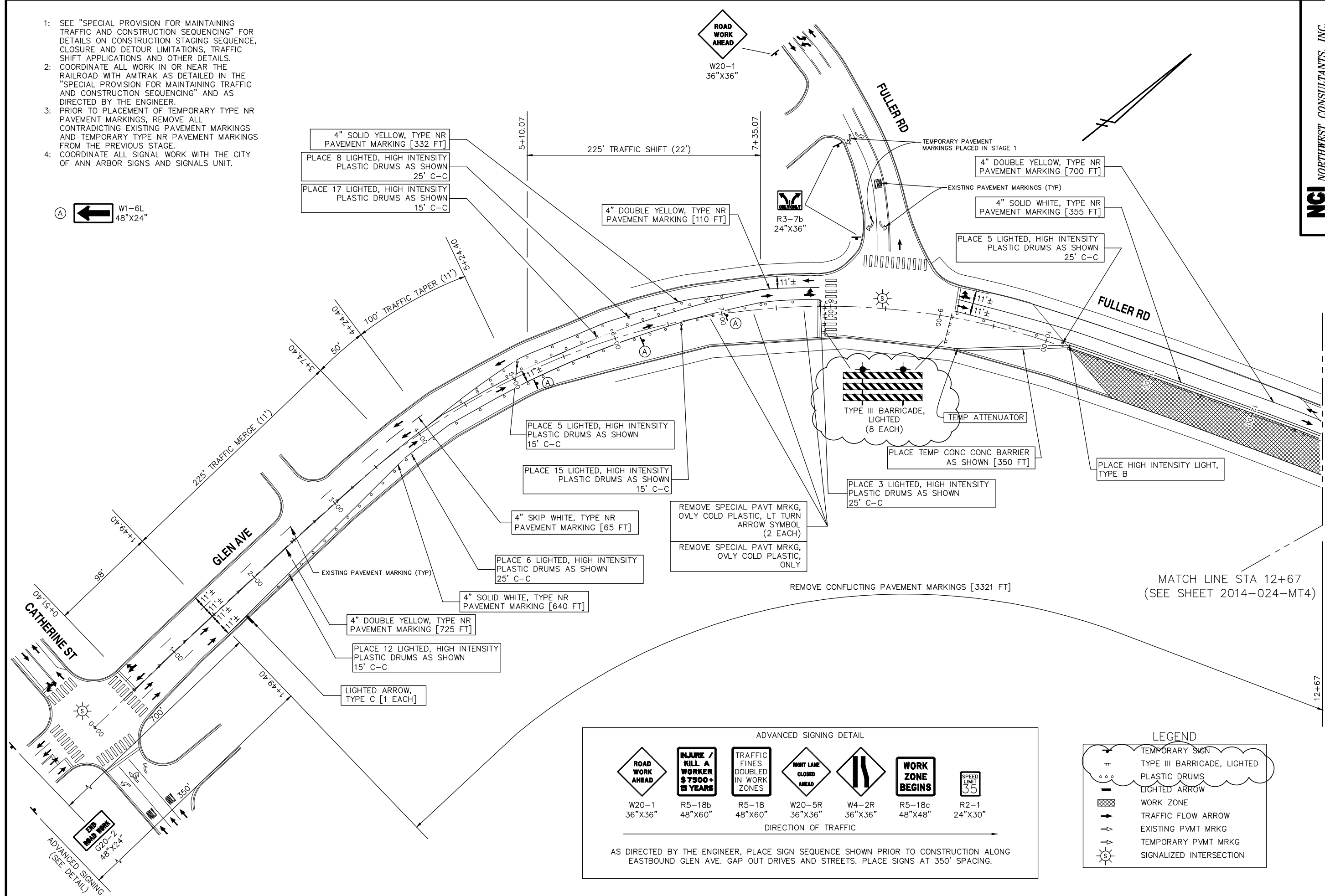


- SEE "SPECIAL PROVISION FOR MAINTAINING TRAFFIC AND CONSTRUCTION SEQUENCING" FOR DETAILS ON CONSTRUCTION STAGING SEQUENCE, CLOSURE AND DETOUR LIMITATIONS, TRAFFIC SHIFT APPLICATIONS AND OTHER DETAILS.
- COORDINATE ALL WORK IN OR NEAR THE RAILROAD WITH AMTRAK AS DETAILED IN THE "SPECIAL PROVISION FOR MAINTAINING TRAFFIC AND CONSTRUCTION SEQUENCING" AND AS DIRECTED BY THE ENGINEER.
- PRIOR TO PLACEMENT OF TEMPORARY TYPE NR PAVEMENT MARKINGS, REMOVE ALL CONTRADICTING EXISTING PAVEMENT MARKINGS AND TEMPORARY TYPE NR PAVEMENT MARKINGS FROM THE PREVIOUS STAGE.
- COORDINATE ALL SIGNAL WORK WITH THE CITY OF ANN ARBOR SIGNS AND SIGNALS UNIT.

(A) W1-6L, 48"x24"



ADVANCED SIGNING DETAIL

W20-1 36"x36"	R5-18b 48"x60"	R5-18 48"x60"	W20-5R 36"x36"	W4-2R 36"x36"	R5-18c 48"x48"	R2-1 24"x30"

AS DIRECTED BY THE ENGINEER, PLACE SIGN SEQUENCE SHOWN PRIOR TO CONSTRUCTION ALONG EASTBOUND GLEN AVE. GAP OUT DRIVES AND STREETS. PLACE SIGNS AT 350' SPACING.

LEGEND

	TEMPORARY SIGN
	TYPE III BARRICADE, LIGHTED
	PLASTIC DRUMS
	LIGHTED ARROW
	WORK ZONE
	TRAFFIC FLOW ARROW
	EXISTING PAVT MRKG
	TEMPORARY PAVT MRKG
	SIGNALIZED INTERSECTION

NCI NORTHWEST CONSULTANTS, INC.

PROJECT MANAGEMENT - PUBLIC SERVICES - CITY OF ANN ARBOR
FULLER ROAD & MAIDEN LANE BRIDGES REHABILITATION PROJECT
MAINTAINING TRAFFIC SHEET - FULLER RD STAGE 2

SCALE: 1"=40'

DRAWING No. 123008A-MT3

SHEET No. 4 OF 54

REV.	DESCRIPTION	DATE	DRAWN	CHECKED

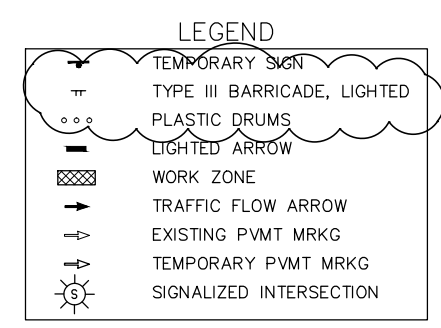
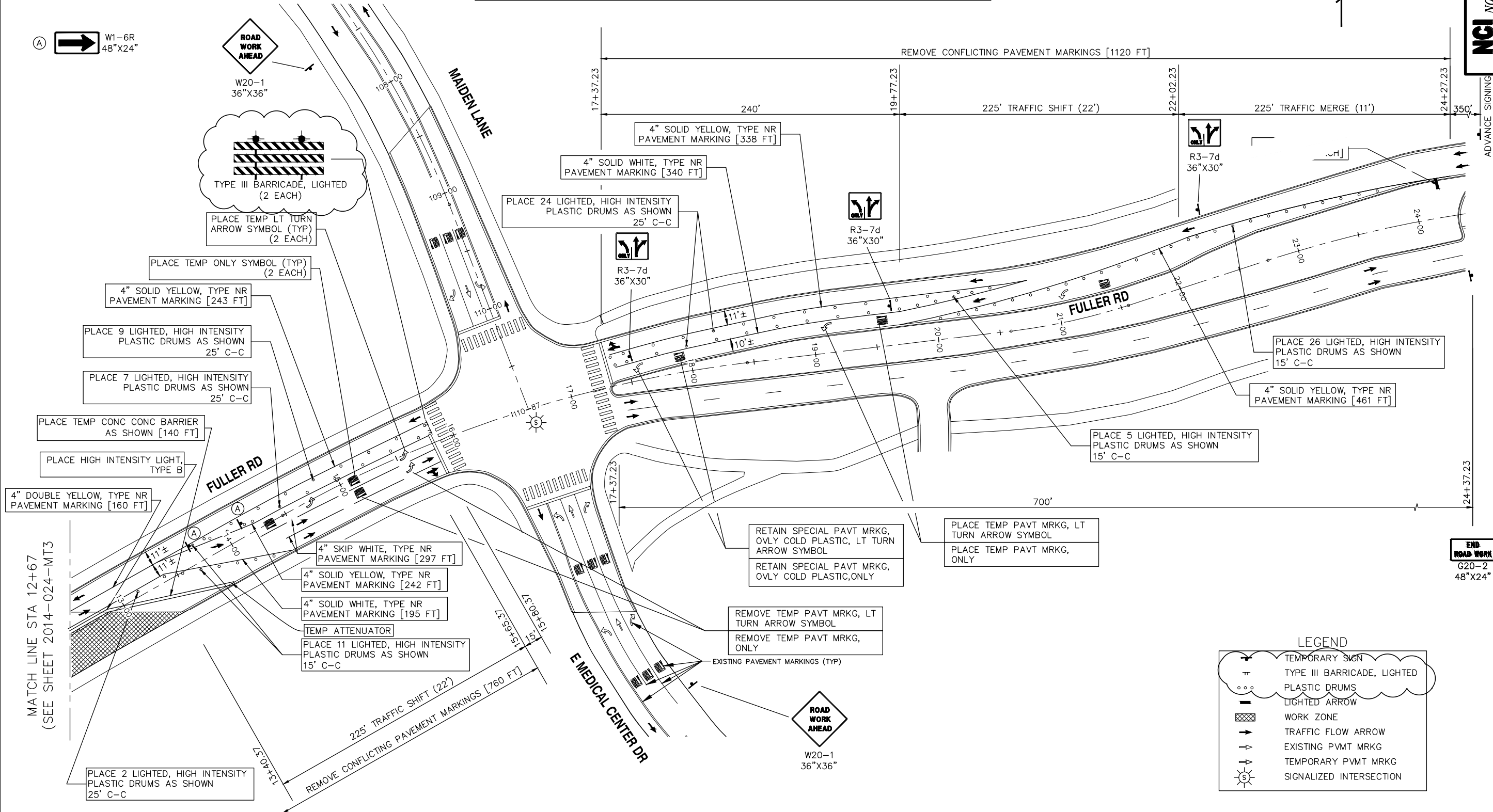
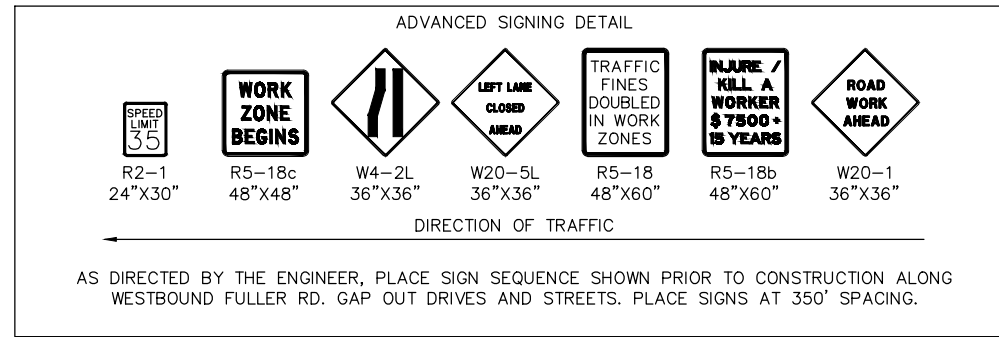
ORIGINAL ISSUE: 11-21-14
 ADENDUM (LIGHTED BARRICADES): 03-02-15

CITY OF ANN ARBOR
 PUBLIC SERVICES
 301 EAST HURON STREET
 ANN ARBOR, MI 48107-2867
 ANN ARBOR 734-798-6410
 www.a2gov.org

ANN ARBOR MI CITY

811
 Know what's below.
 Call Before you dig.

- SEE "SPECIAL PROVISION FOR MAINTAINING TRAFFIC AND CONSTRUCTION SEQUENCING" FOR DETAILS ON CONSTRUCTION STAGING SEQUENCE, CLOSURE AND DETOUR LIMITATIONS, TRAFFIC SHIFT APPLICATIONS AND OTHER DETAILS.
- COORDINATE ALL WORK IN OR NEAR THE RAILROAD WITH AMTRAK AS DETAILED IN THE "SPECIAL PROVISION FOR MAINTAINING TRAFFIC AND CONSTRUCTION SEQUENCING" AND AS DIRECTED BY THE ENGINEER.
- PRIOR TO PLACEMENT OF TEMPORARY TYPE NR PAVEMENT MARKINGS, REMOVE ALL CONTRADICTING EXISTING PAVEMENT MARKINGS AND TEMPORARY TYPE NR PAVEMENT MARKINGS FROM THE PREVIOUS STAGE.
- COORDINATE ALL SIGNAL WORK WITH THE CITY OF ANN ARBOR SIGNS AND SIGNALS UNIT.



NGI NORTHWEST CONSULTANTS, INC.

PROJECT MANAGEMENT - PUBLIC SERVICES - CITY OF ANN ARBOR
FULLER ROAD & MAIDEN LANE
BRIDGES REHABILITATION PROJECT
MAINTAINING TRAFFIC SHEET - FULLER RD STAGE 2

SCALE 1"=40'

DRAWING No. 123008A-MT4

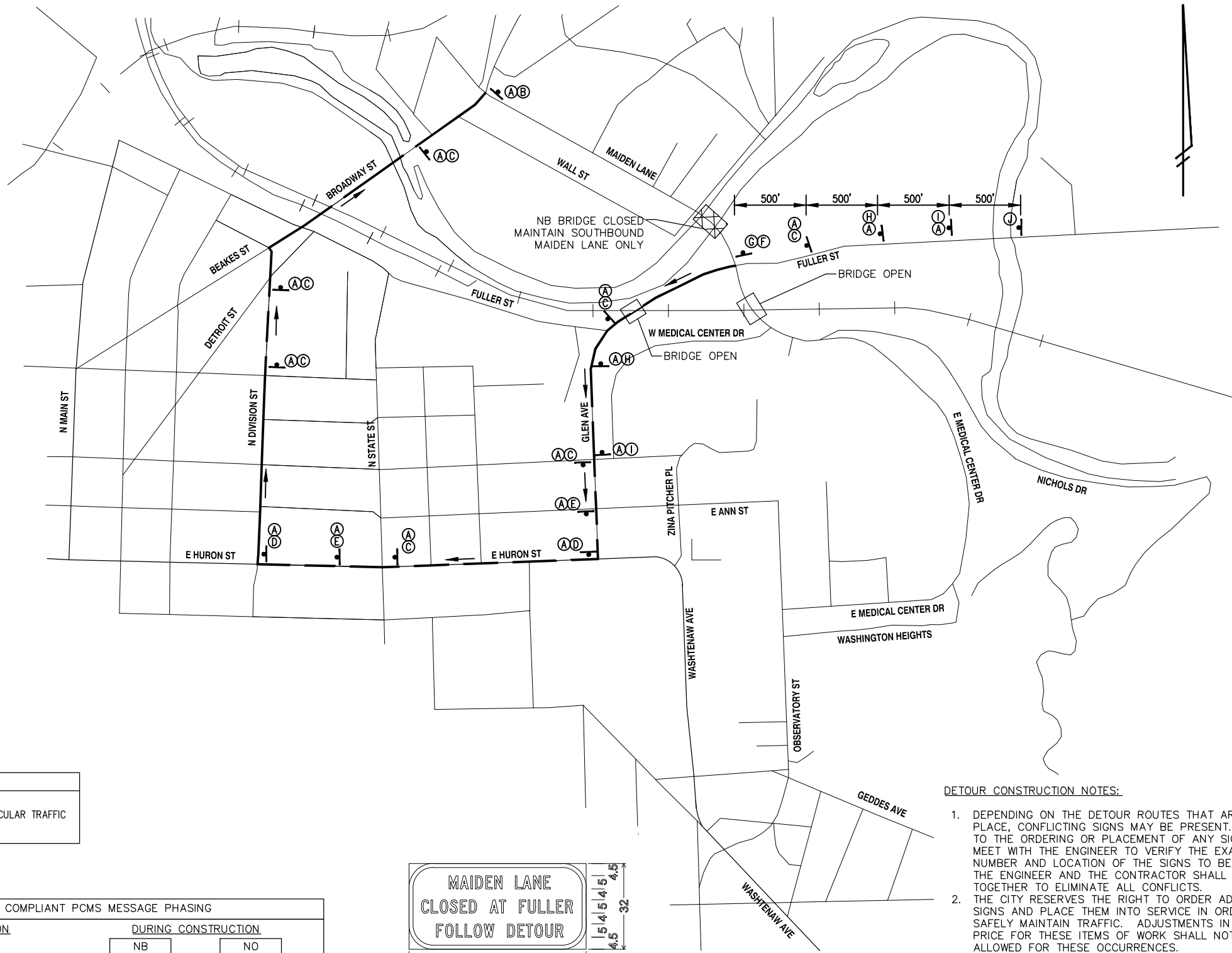
SHEET No. 5 OF 54

REV.	DATE	DESCRIPTION
AK		
KR		
KR		
11-21-14		ORIGINAL ISSUE
03-02-15		ADDENDUM (LIGHTED BARRICADES)

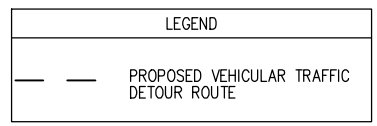
CITY OF ANN ARBOR
PUBLIC SERVICE
301 EAST HURON STREET
ANN ARBOR MI 48107-2867
ANN ARBOR MI 48107-2867
www.a2gov.org

ANN ARBOR MI

811
Know what's below.
Call Before you dig.



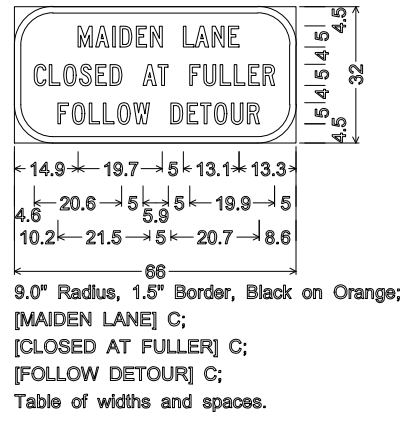
DETOUR QUANTITIES (THIS SHEET ONLY)			
ITEM	ITEM KEY	QUANTITY	
MAIDEN LANE	D3-1 36"x6"	A	16
	M4-8a 24"x18"	B	1
	M4-9S 30"x24"	C	7
	M4-9R 30"x24"	D	2
	M4-9R(MOD) 30"x24"	E	2
	M4-10L 48"x18"	F	1
	R11-2 48"x30"	G	1
	W20-2 36"x36"	H	2
	W20-3 36"x36"	I	2
SEE DETAIL	SPECIAL-A 66"x32"	J	1
SIGN, PORTABLE, CHANGEABLE MESSAGE - 3 EACH		VERIFY EXACT QUANTITY AND LOCATION WITH ENGINEER PRIOR TO ORDERING	



NTCIP COMPLIANT PCMS MESSAGE PHASING		
PRIOR TO CONSTRUCTION	DURING CONSTRUCTION	
BRIDGE WORK COMING	NB MAIDEN CLOSED	NO RIGHT TURN
MONTH DATE *	AT FULLER	AT MAIDEN
ALT ROUTE ADVISED	FOLLOW DETOUR	FOLLOW DETOUR

NOTE: PCMS LOCATIONS AND MESSAGES WILL BE AS DIRECTED BY THE ENGINEER.

* THE CONTRACTOR SHALL PLACE THE APPROPRIATE DATE AS APPROVED BY THE ENGINEER



SPECIAL-A SIGN DETAIL

DETOUR CONSTRUCTION NOTES:

1. DEPENDING ON THE DETOUR ROUTES THAT ARE PUT IN PLACE, CONFLICTING SIGNS MAY BE PRESENT. PRIOR TO THE ORDERING OR PLACEMENT OF ANY SIGNS, MEET WITH THE ENGINEER TO VERIFY THE EXACT NUMBER AND LOCATION OF THE SIGNS TO BE PLACED. THE ENGINEER AND THE CONTRACTOR SHALL WORK TOGETHER TO ELIMINATE ALL CONFLICTS.
2. THE CITY RESERVES THE RIGHT TO ORDER ADDITIONAL SIGNS AND PLACE THEM INTO SERVICE IN ORDER TO SAFELY MAINTAIN TRAFFIC. ADJUSTMENTS IN THE UNIT PRICE FOR THESE ITEMS OF WORK SHALL NOT BE ALLOWED FOR THESE OCCURRENCES.
3. THE CONTRACTOR SHALL COORDINATE HIS OPERATIONS WITH THOSE OF THE CITY OF ANN ARBOR'S SIGNS AND SIGNALS UNIT DURING THE COURSE OF THE DETOUR ROUTE ESTABLISHMENT TO EFFECTIVELY AND SAFELY MAINTAIN TRAFFIC. DO NOT ERRECT ANY SIGNS UNTIL ITS LOCATION AND PROPOSED DATE OF INSTALLATION IS APPROVED BY THE CITY OF ANN ARBOR.
4. THIS DETOUR IS TO BE IN PLACE DURING MAIDEN LANE BRIDGE REHABILITATION (STAGE 1). AS DIRECTED BY THE ENGINEER, THE CONTRACTOR WILL CLOSE AND DETOUR NB MAIDEN LANE TRAFFIC FOR THE REHABILITATION OF THE BRIDGE.
5. THE MAIDEN LANE DETOUR ROUTE IS AS FOLLOWS: FULLER ST, TO GLEN AVE, TO E HURON ST, TO N DIVISION ST, TO BROADWAY ST, TO MAIDEN LANE.
6. REFERENCE THE "SPECIAL PROVISION FOR MAINTAINING TRAFFIC AND CONSTRUCTION SEQUENCING" FOR ADDITIONAL PROJECT REQUIREMENTS. THE CONTRACTOR'S ATTENTION IS SPECIFICALLY DIRECTED TO THE SECTION OF SAME SPECIAL PROVISION REGARDING COORDINATION WITH THE CITY SIGNS AND SIGNALS UNIT FOR THE SEVERAL DETOUR ROUTE MODIFICATIONS AND THE MODIFICATIONS TO TRAFFIC SIGNALS FOR THE DETOUR.
7. THE CONTRACTOR SHALL FURNISH, ERECT, AND MAINTAIN SIGNS AS SHOWN ON THE PLANS OR OTHERWISE DIRECTED BY THE ENGINEER.
8. CONSTRUCTION WARNING SIGNS SHALL HAVE AN ORANGE REFLECTIVE BACKGROUND.
9. SIGNS SHALL CONFORM TO THE CURRENT MICHIGAN MANUAL OF UNIFORM TRAFFIC CONTROL DEVICES.
10. THE CONTRACTOR SHALL DRIVE ALL SIGNS INTO EXPOSED GROUND OR INSERT INTO A BORED HOLE IN PAVEMENT AS NECESSARY TO PERMANENTLY SECURE. ALL HOLES IN PAVEMENT SHALL BE FILLED WITH ENGINEER-APPROVED MORTAR WHEN THE SIGN IS REMOVED AND NO LONGER NEEDED. COSTS FOR THIS WORK SHALL BE INCLUDED IN THE PAY ITEM "SIGN, TYPE B, TEMP, PRISMATIC, FURN" OR "SIGN, TYPE B, PRISMATIC, SPECIAL, FURN".
11. ADVANCE WARNING SIGNS SHALL BE PROVIDED WITH TWO (2) TYPE A FLASHING LIGHTS AND ONE (1) DAY-GLOW ORANGE FLAG.

NGI NORTHWEST CONSULTANTS, INC.



REV.	DESCRIPTION	DATE	DRAWN	CHECKED
AK				
KR				
11-21-14				
03-02-15				

CITY OF ANN ARBOR
PUBLIC SERVICE
301 EAST HURON STREET
ANN ARBOR MI 48107-2867
www.a2gov.org



PROJECT MANAGEMENT - PUBLIC SERVICES - CITY OF ANN ARBOR
FULLER ROAD & MAIDEN LANE
BRIDGES REHABILITATION PROJECT
E MEDICAL CENTER DR STAGE 1 DETOUR SHEET

PROFILE: N/A
SCALE: NONE
DRAWING No. 126043A-IMTS
SHEET No. 6 OF 54

END ROAD WORK
G20-2
48"x24"

ADVANCED SIGNING
(SEE DETAIL)

MAIDEN LANE

ISLAND DR

FULLER RD

E MEDICAL CENTER DR

REMOVE CONFLICTING PAVEMENT MARKINGS [1225 FT]

4" SOLID WHITE, TYPE NR
PAVEMENT MARKING [90 FT]

4" DOUBLE YELLOW, TYPE NR
PAVEMENT MARKING [180 FT]

PLACE 4 LIGHTED, HIGH INTENSITY
PLASTIC DRUMS AS SHOWN
25' C-C

4" DOUBLE YELLOW, TYPE NR
PAVEMENT MARKING [310 FT]

PLACE 4 LIGHTED, HIGH INTENSITY
PLASTIC DRUMS AS SHOWN
25' C-C

PLACE 6 LIGHTED, HIGH INTENSITY
PLASTIC DRUMS AS SHOWN
15' C-C

TEMP ATTENUATOR

PLACE TEMP CONC CONC BARRIER
AS SHOWN [278 FT]

PLACE HIGH INTENSITY LIGHT,
TYPE B

PLACE 8 LIGHTED, HIGH INTENSITY
PLASTIC DRUMS AS SHOWN
15' C-C

LIGHTED ARROW,
TYPE C [1 EACH]

82.5' TRAFFIC
SHIFT (11')

REMOVE CONFLICTING
PAVEMENT MARKINGS
[83 FT]

TYPE III BARRICADE, LIGHTED
(4 EACH)

TYPE III BARRICADE, LIGHTED
(4 EACH)

PLACE 4 LIGHTED, HIGH INTENSITY
PLASTIC DRUMS AS SHOWN
15' C-C

4" DOUBLE YELLOW, TYPE NR
PAVEMENT MARKING [760 FT]

4" SOLID YELLOW, TYPE NR
PAVEMENT MARKING [155 FT]

4" SOLID WHITE, TYPE NR
PAVEMENT MARKING [375 FT]

PLACE 6 LIGHTED, HIGH INTENSITY
PLASTIC DRUMS AS SHOWN
15' C-C

- 1: SEE "SPECIAL PROVISION FOR MAINTAINING TRAFFIC AND CONSTRUCTION SEQUENCING" FOR DETAILS ON CONSTRUCTION STAGING SEQUENCE, CLOSURE AND DETOUR LIMITATIONS, TRAFFIC SHIFT APPLICATIONS AND OTHER DETAILS.
- 2: COORDINATE ALL WORK IN OR NEAR THE RAILROAD WITH AMTRAK AS DETAILED IN THE "SPECIAL PROVISION FOR MAINTAINING TRAFFIC AND CONSTRUCTION SEQUENCING" AND AS DIRECTED BY THE ENGINEER.
- 3: PRIOR TO PLACEMENT OF TEMPORARY TYPE NR PAVEMENT MARKINGS, REMOVE ALL CONTRADICTING EXISTING PAVEMENT MARKINGS AND TEMPORARY TYPE NR PAVEMENT MARKINGS FROM THE PREVIOUS STAGE.
- 4: COORDINATE ALL SIGNAL WORK WITH THE CITY OF ANN ARBOR SIGNS AND SIGNALS UNIT.

LEGEND

- TEMPORARY SIGN
- TYPE III BARRICADE, LIGHTED
- PLASTIC DRUMS
- LIGHTED ARROW
- WORK ZONE
- TRAFFIC FLOW ARROW
- EXISTING PVMT MRKG
- TEMPORARY PVMT MRKG
- SIGNALIZED INTERSECTION

ADVANCED SIGNING DETAIL

AS DIRECTED BY THE ENGINEER, PLACE SIGN SEQUENCE SHOWN PRIOR TO CONSTRUCTION ALONG EASTBOUND MAIDEN LANE. GAP OUT DRIVES AND STREETS. PLACE SIGNS AT 300' SPACING.

ROAD WORK AHEAD
W20-1
36"x36"

ROAD WORK AHEAD
W20-1
36"x36"

NCI NORTHWEST CONSULTANTS, INC.



REV.	DESCRIPTION	DATE	DRAWN	CHECKED
AK				
KR				
11-21-14	ORIGINAL ISSUE			
03-02-15	ADDENDUM (LIGHTED BARRICADES)			

CITY OF ANN ARBOR
PUBLIC SERVICE
301 EAST HURON STREET
ANN ARBOR MI 48102-5847
www.a2gov.org



PROJECT MANAGEMENT - PUBLIC SERVICES - CITY OF ANN ARBOR
FULLER ROAD & MAIDEN LANE
BRIDGES REHABILITATION PROJECT
MAINTAINING TRAFFIC SHEET - MAIDEN LANE STAGE 2

PROFILE: N/A
SCALE: 1"=40'
DRAWING No. 126043A-MIT7