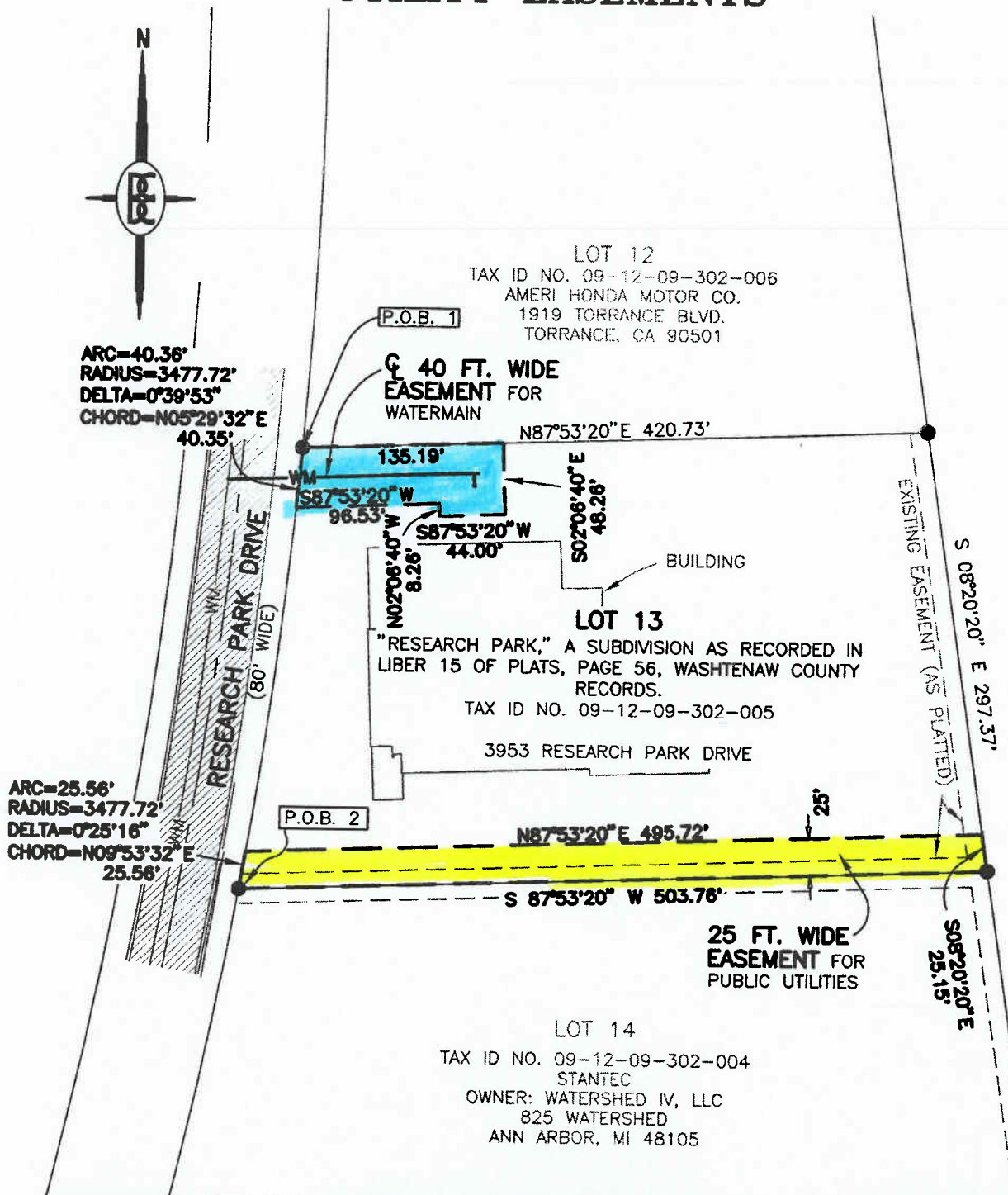


UTILITY EASEMENTS



DESCRIPTION:
PART OF LOT 13,
"RESEARCH PARK," A
SUBDIVISION, AS
RECORDED IN LIBER 15
OF PLATS, PAGE 56,
WASHTENAW CO.
RECORDS.

BOSS ENGINEERING
ENGINEERS • SURVEYORS • PLANNERS
LANDSCAPE ARCHITECTS
(E-MAIL: bo@bosseng.com)

LANSING COUNTY OFFICE:
3121 E. GRAND PRAIRIE AVE.
FAYETTEVILLE, MI 48843
(800) 246-8735; FAX (517) 548-1870

QUINCY COUNTY OFFICE:
24435 HALSTED ROAD
FARMINGTON HILLS, MI 48335
(800) 763-0390; FAX (248) 628-9460



CLIENT:
RAND

JOB NO. 08005
SHEET 1 OF 2

DATE 08/29/08 10/01/08

SCALE: 1 INCH = 100 FEET

FB NA CREW NA DR. NA CK JPL

LEGEND
○ = IRON SET
● = IRON FOUND
⊙ = MONUMENT FOUND
* = FENCE
(R) = RECORDED
(M) = MEASURED