

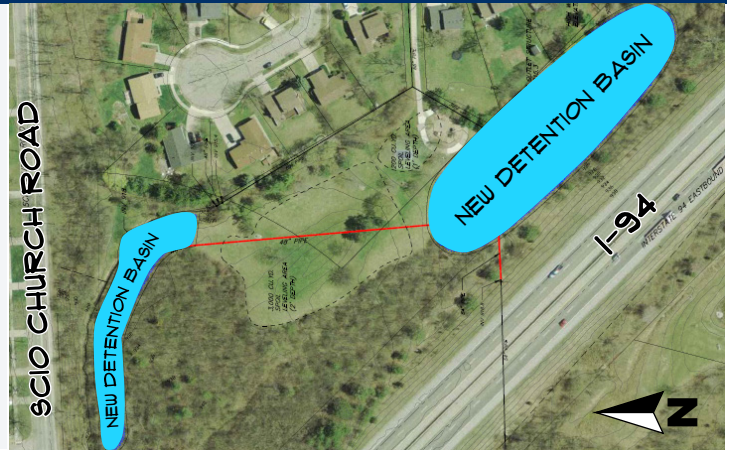
INTRODUCTION

The Project Team for the **Upper Malletts Stormwater Conveyance Study** has analyzed and identified the projects required to adequately manage stormwater within the watershed. While the projects focus on different areas, all three are ultimately necessary to effectively minimize flooding during major storms such as the one seen on March 15, 2012.

Eisenhower/Churchill Park

Two stormwater detention basins would be constructed along the north and south ends of the park. These basins would help manage the stormwater flow from the north along Scio Church Road and from the drainage area west of I-94. The basins would generally be dry unless a large rain event occurs. After it rains, the basin would drain slowly so downstream pipes can handle the flow. After completion of the basins, the park facilities would be upgraded.

Cost Estimate: **\$1,700,000**
Surface Area: **2.5 Acres**
Water Volume: **450,000 ft³**



Pioneer/Scio Church



A detention basin would be built north of Scio Church Road with the possibility of additional detention under Scio Church. This basin would collect water from Pioneer HS and slowly release it into the storm sewer system, controlling flooding for the downstream streets. The project would also upgrade the storm sewer in Scio Church to facilitate the new drainage patterns. The disc golf course within the school property would be reconfigured to accommodate the new basin.

Cost Estimate: **\$1,000,000**
Surface Area: **2.8 Acres**
Water Volume: **400,000 ft³**

Lawton Park

A large underground detention basin would be constructed at the north end of Lawton Park. The project would also include a new storm sewer along Mershon Street, and other improvements along Hanover Street and Scio Church. The basin will manage storm flows from both North and South of Scio Church. Existing park amenities would be replaced and improved including the baseball/softball diamond.

Cost Estimate: **\$4,125,000**
Surface Area: **1.1 Acres**
Water Volume: **280,000 ft³**



View detailed maps at www.UpperMallettsStudy.org/concepts