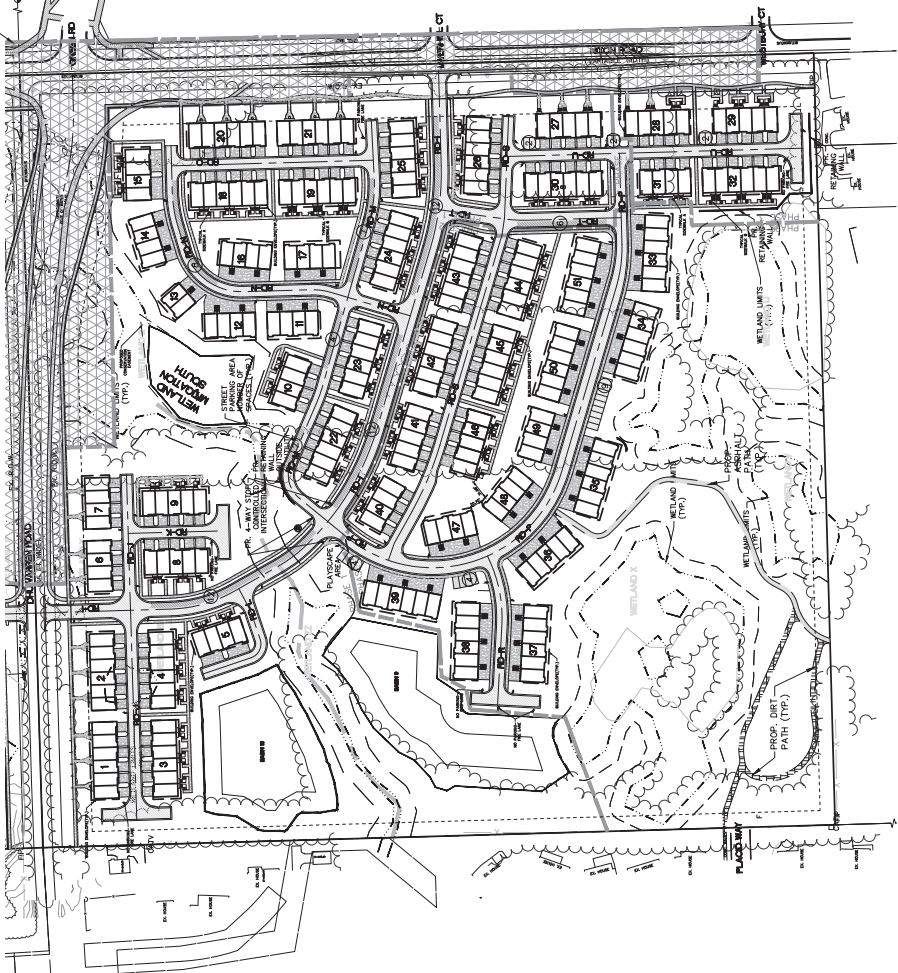






THE NIXON, OHIO-WARREN ROAD REALIGNMENT AND INTERSECTION, INCLUDING THE PROPOSED REALIGNMENT AND INTERSECTION, SHALL BE A CONVEYABLE PROJECT PROVIDED THAT THE AREA BEING WITHIN AND OUTSIDE THE REALIGNMENT IS THE RESPONSIBILITY OF THE DEVELOPER. THE REALIGNMENT AND INTERSECTION SHALL BE DETERMINED NEAR THE NIXON, OHIO-WARREN INTERSECTION.

**NOTE**  
 PRIVATE DRIVEWAY ABLES WILL BE OWNED AND MAINTAINED BY THE HOMEOWNERS ASSOCIATION.



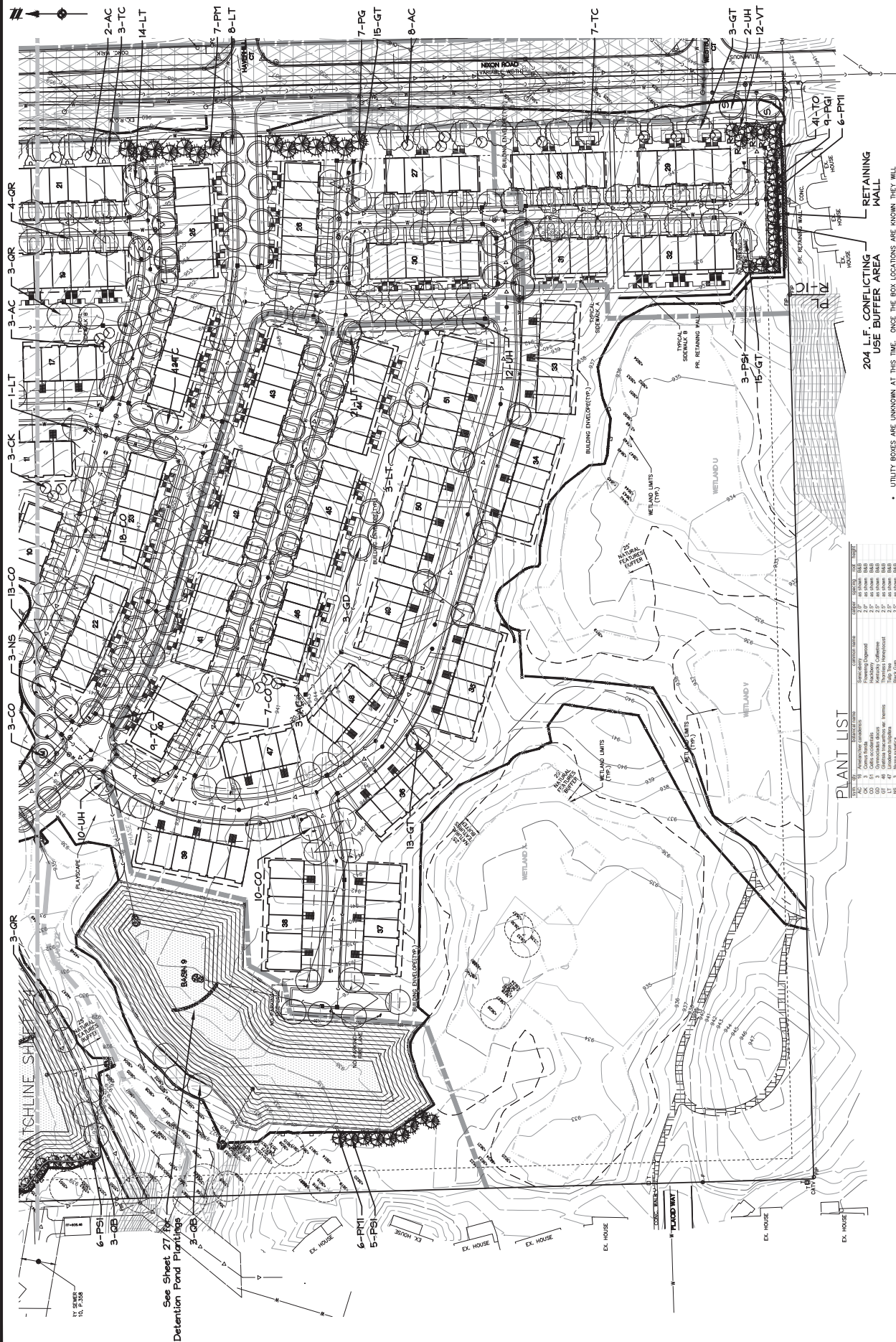
**LEGEND**

|                        |                       |
|------------------------|-----------------------|
| EXIST. WOODS LINE      | PROF. BULK LINE       |
| EXIST. WETLAND LIMITS  | PROF. ROAD CENTERLINE |
| EXIST. EASEMENT        | PROF. UTILITY POLE    |
| BOUNDARY/PROPERTY LINE | PROF. BACK LOT LINE   |
| SECTION LINE           | PROF. EASEMENT        |
| PROP. ASPHALT          | PROP. SETBACK LINE    |
| PROP. ROAD PARKING     | EXIST. UTILITY POLE   |
|                        | SECTION CORNER        |
|                        | PARKING               |

**NOTICE:**  
 THE LOCATIONS OF EXISTING UNDERGROUND UTILITIES SHOWN IN AN APPROXIMATE WAY ONLY AND OWNER ON ITS REPRESENTATIVE. THE CONTRACTOR SHALL BE RESPONSIBLE FOR VERIFYING THE LOCATION OF EXISTING UTILITIES BEFORE COMMENCING ANY WORK. ALL DAMAGES WHICH MIGHT BE OCCASIONED BY THE PRESERVE ANY AND ALL UNDERGROUND UTILITIES. COPYRIGHT © 2014 ATWELL, LLC. ALL RIGHTS RESERVED. PRIOR WRITTEN CONSENT OF ATWELL, LLC.

Know what's below.  
 Call before you dig.



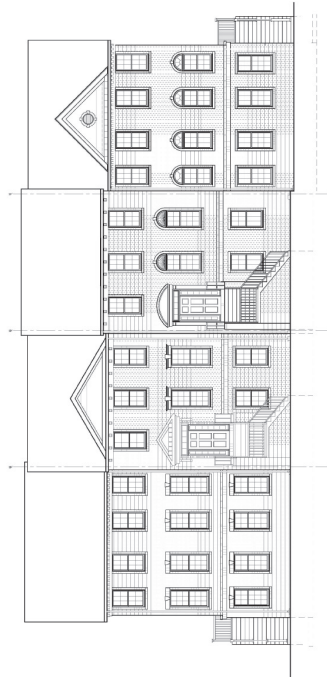


UTILITY BOXES ARE UNKNOWN AT THIS TIME. ONCE THE BOX LOCATIONS ARE KNOWN THEY WILL BE INDICATED.  
 DISTURBED AREAS TO BE SOO OR SEED.  
 LANDSCAPE AREAS SHALL BE IRRIGATED.  
 DETENTION AREAS OR LANDSCAPED AREAS FOR 30 MINUTES RESIDENTS. CHECKS ARE TO BE MADE PAYABLE TO: CITY OF ANN ARBOR AND MAILED TO SYSTEMS PLANNING UNIT, 301 E. HURON ST., PO BOX 6647, ANN ARBOR, MI 48107-8647. ATTN: KERRY GRAY. PLEASE INCLUDE THE TREE SPECIES AND QUANTITY.  
 TREES SHALL BE PLANTED 5'-8' FROM UTILITY LEADS.

**PLANT LIST**

| PLANT | COMMON NAME       | HEIGHT | SPACING   | NOTES     |
|-------|-------------------|--------|-----------|-----------|
| 10    | AMERICAN CORYMBUS | 12-15' | 10' x 10' | 10' x 10' |
| 11    | AMERICAN CORYMBUS | 12-15' | 10' x 10' | 10' x 10' |
| 12    | AMERICAN CORYMBUS | 12-15' | 10' x 10' | 10' x 10' |
| 13    | AMERICAN CORYMBUS | 12-15' | 10' x 10' | 10' x 10' |
| 14    | AMERICAN CORYMBUS | 12-15' | 10' x 10' | 10' x 10' |
| 15    | AMERICAN CORYMBUS | 12-15' | 10' x 10' | 10' x 10' |
| 16    | AMERICAN CORYMBUS | 12-15' | 10' x 10' | 10' x 10' |
| 17    | AMERICAN CORYMBUS | 12-15' | 10' x 10' | 10' x 10' |
| 18    | AMERICAN CORYMBUS | 12-15' | 10' x 10' | 10' x 10' |
| 19    | AMERICAN CORYMBUS | 12-15' | 10' x 10' | 10' x 10' |
| 20    | AMERICAN CORYMBUS | 12-15' | 10' x 10' | 10' x 10' |
| 21    | AMERICAN CORYMBUS | 12-15' | 10' x 10' | 10' x 10' |
| 22    | AMERICAN CORYMBUS | 12-15' | 10' x 10' | 10' x 10' |
| 23    | AMERICAN CORYMBUS | 12-15' | 10' x 10' | 10' x 10' |
| 24    | AMERICAN CORYMBUS | 12-15' | 10' x 10' | 10' x 10' |
| 25    | AMERICAN CORYMBUS | 12-15' | 10' x 10' | 10' x 10' |
| 26    | AMERICAN CORYMBUS | 12-15' | 10' x 10' | 10' x 10' |
| 27    | AMERICAN CORYMBUS | 12-15' | 10' x 10' | 10' x 10' |
| 28    | AMERICAN CORYMBUS | 12-15' | 10' x 10' | 10' x 10' |
| 29    | AMERICAN CORYMBUS | 12-15' | 10' x 10' | 10' x 10' |
| 30    | AMERICAN CORYMBUS | 12-15' | 10' x 10' | 10' x 10' |
| 31    | AMERICAN CORYMBUS | 12-15' | 10' x 10' | 10' x 10' |
| 32    | AMERICAN CORYMBUS | 12-15' | 10' x 10' | 10' x 10' |
| 33    | AMERICAN CORYMBUS | 12-15' | 10' x 10' | 10' x 10' |
| 34    | AMERICAN CORYMBUS | 12-15' | 10' x 10' | 10' x 10' |
| 35    | AMERICAN CORYMBUS | 12-15' | 10' x 10' | 10' x 10' |
| 36    | AMERICAN CORYMBUS | 12-15' | 10' x 10' | 10' x 10' |
| 37    | AMERICAN CORYMBUS | 12-15' | 10' x 10' | 10' x 10' |
| 38    | AMERICAN CORYMBUS | 12-15' | 10' x 10' | 10' x 10' |
| 39    | AMERICAN CORYMBUS | 12-15' | 10' x 10' | 10' x 10' |
| 40    | AMERICAN CORYMBUS | 12-15' | 10' x 10' | 10' x 10' |
| 41    | AMERICAN CORYMBUS | 12-15' | 10' x 10' | 10' x 10' |
| 42    | AMERICAN CORYMBUS | 12-15' | 10' x 10' | 10' x 10' |
| 43    | AMERICAN CORYMBUS | 12-15' | 10' x 10' | 10' x 10' |
| 44    | AMERICAN CORYMBUS | 12-15' | 10' x 10' | 10' x 10' |
| 45    | AMERICAN CORYMBUS | 12-15' | 10' x 10' | 10' x 10' |
| 46    | AMERICAN CORYMBUS | 12-15' | 10' x 10' | 10' x 10' |
| 47    | AMERICAN CORYMBUS | 12-15' | 10' x 10' | 10' x 10' |
| 48    | AMERICAN CORYMBUS | 12-15' | 10' x 10' | 10' x 10' |
| 49    | AMERICAN CORYMBUS | 12-15' | 10' x 10' | 10' x 10' |
| 50    | AMERICAN CORYMBUS | 12-15' | 10' x 10' | 10' x 10' |
| 51    | AMERICAN CORYMBUS | 12-15' | 10' x 10' | 10' x 10' |
| 52    | AMERICAN CORYMBUS | 12-15' | 10' x 10' | 10' x 10' |
| 53    | AMERICAN CORYMBUS | 12-15' | 10' x 10' | 10' x 10' |
| 54    | AMERICAN CORYMBUS | 12-15' | 10' x 10' | 10' x 10' |
| 55    | AMERICAN CORYMBUS | 12-15' | 10' x 10' | 10' x 10' |
| 56    | AMERICAN CORYMBUS | 12-15' | 10' x 10' | 10' x 10' |
| 57    | AMERICAN CORYMBUS | 12-15' | 10' x 10' | 10' x 10' |
| 58    | AMERICAN CORYMBUS | 12-15' | 10' x 10' | 10' x 10' |
| 59    | AMERICAN CORYMBUS | 12-15' | 10' x 10' | 10' x 10' |
| 60    | AMERICAN CORYMBUS | 12-15' | 10' x 10' | 10' x 10' |
| 61    | AMERICAN CORYMBUS | 12-15' | 10' x 10' | 10' x 10' |
| 62    | AMERICAN CORYMBUS | 12-15' | 10' x 10' | 10' x 10' |
| 63    | AMERICAN CORYMBUS | 12-15' | 10' x 10' | 10' x 10' |
| 64    | AMERICAN CORYMBUS | 12-15' | 10' x 10' | 10' x 10' |
| 65    | AMERICAN CORYMBUS | 12-15' | 10' x 10' | 10' x 10' |
| 66    | AMERICAN CORYMBUS | 12-15' | 10' x 10' | 10' x 10' |
| 67    | AMERICAN CORYMBUS | 12-15' | 10' x 10' | 10' x 10' |
| 68    | AMERICAN CORYMBUS | 12-15' | 10' x 10' | 10' x 10' |
| 69    | AMERICAN CORYMBUS | 12-15' | 10' x 10' | 10' x 10' |
| 70    | AMERICAN CORYMBUS | 12-15' | 10' x 10' | 10' x 10' |
| 71    | AMERICAN CORYMBUS | 12-15' | 10' x 10' | 10' x 10' |
| 72    | AMERICAN CORYMBUS | 12-15' | 10' x 10' | 10' x 10' |
| 73    | AMERICAN CORYMBUS | 12-15' | 10' x 10' | 10' x 10' |
| 74    | AMERICAN CORYMBUS | 12-15' | 10' x 10' | 10' x 10' |
| 75    | AMERICAN CORYMBUS | 12-15' | 10' x 10' | 10' x 10' |
| 76    | AMERICAN CORYMBUS | 12-15' | 10' x 10' | 10' x 10' |
| 77    | AMERICAN CORYMBUS | 12-15' | 10' x 10' | 10' x 10' |
| 78    | AMERICAN CORYMBUS | 12-15' | 10' x 10' | 10' x 10' |
| 79    | AMERICAN CORYMBUS | 12-15' | 10' x 10' | 10' x 10' |
| 80    | AMERICAN CORYMBUS | 12-15' | 10' x 10' | 10' x 10' |
| 81    | AMERICAN CORYMBUS | 12-15' | 10' x 10' | 10' x 10' |
| 82    | AMERICAN CORYMBUS | 12-15' | 10' x 10' | 10' x 10' |
| 83    | AMERICAN CORYMBUS | 12-15' | 10' x 10' | 10' x 10' |
| 84    | AMERICAN CORYMBUS | 12-15' | 10' x 10' | 10' x 10' |
| 85    | AMERICAN CORYMBUS | 12-15' | 10' x 10' | 10' x 10' |
| 86    | AMERICAN CORYMBUS | 12-15' | 10' x 10' | 10' x 10' |
| 87    | AMERICAN CORYMBUS | 12-15' | 10' x 10' | 10' x 10' |
| 88    | AMERICAN CORYMBUS | 12-15' | 10' x 10' | 10' x 10' |
| 89    | AMERICAN CORYMBUS | 12-15' | 10' x 10' | 10' x 10' |
| 90    | AMERICAN CORYMBUS | 12-15' | 10' x 10' | 10' x 10' |
| 91    | AMERICAN CORYMBUS | 12-15' | 10' x 10' | 10' x 10' |
| 92    | AMERICAN CORYMBUS | 12-15' | 10' x 10' | 10' x 10' |
| 93    | AMERICAN CORYMBUS | 12-15' | 10' x 10' | 10' x 10' |
| 94    | AMERICAN CORYMBUS | 12-15' | 10' x 10' | 10' x 10' |
| 95    | AMERICAN CORYMBUS | 12-15' | 10' x 10' | 10' x 10' |
| 96    | AMERICAN CORYMBUS | 12-15' | 10' x 10' | 10' x 10' |
| 97    | AMERICAN CORYMBUS | 12-15' | 10' x 10' | 10' x 10' |
| 98    | AMERICAN CORYMBUS | 12-15' | 10' x 10' | 10' x 10' |
| 99    | AMERICAN CORYMBUS | 12-15' | 10' x 10' | 10' x 10' |
| 100   | AMERICAN CORYMBUS | 12-15' | 10' x 10' | 10' x 10' |

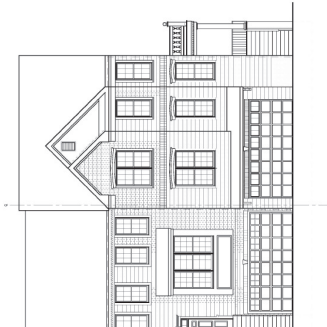
See Sheet 27 for  
 Detention Pond Plantings



EASTON TRADITIONAL  
RIGHT HAND  
SCALE: 1/4" = 1'-0"



EASTON FEDERAL  
LEFT HAND  
SCALE: 1/4" = 1'-0"

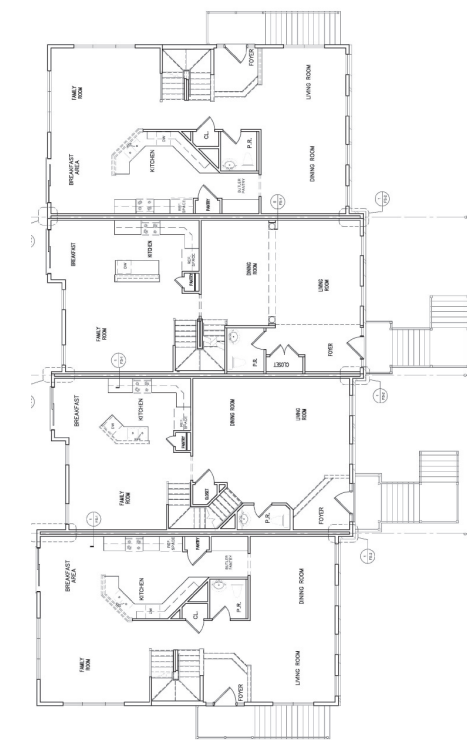


FENWICKE MANOR  
RIGHT HAND  
SCALE: 1/4" = 1'-0"

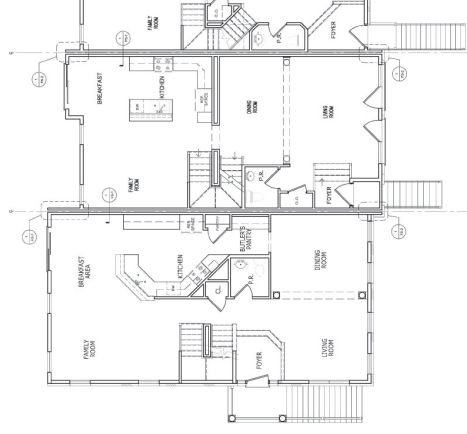
Exterior Building Materials:  
Brick Veneer  
Cultured Stone  
Vinyl Soffit/Siding  
Fiber Cement Siding (Hardie)  
Aluminum Focio/Gutters  
Roofing Material: Asphalt-High Definition Dimensional Shingles

FRONT ELEVATION  
SCALE: 1/4" = 1'-0"

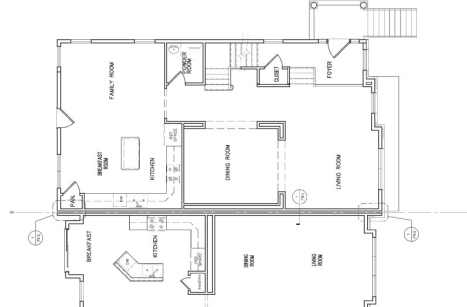
FRONT ELEVATION  
SCALE: 1/4" = 1'-0"



EASTON TRADITIONAL  
RIGHT HAND  
SCALE: 1/4" = 1'-0"



EASTON FEDERAL  
LEFT HAND  
SCALE: 1/4" = 1'-0"



FENWICKE MANOR  
RIGHT HAND  
SCALE: 1/4" = 1'-0"

LIVING LEVEL PLAN  
SCALE: 1/4" = 1'-0"

LIVING LEVEL PLAN  
SCALE: 1/4" = 1'-0"