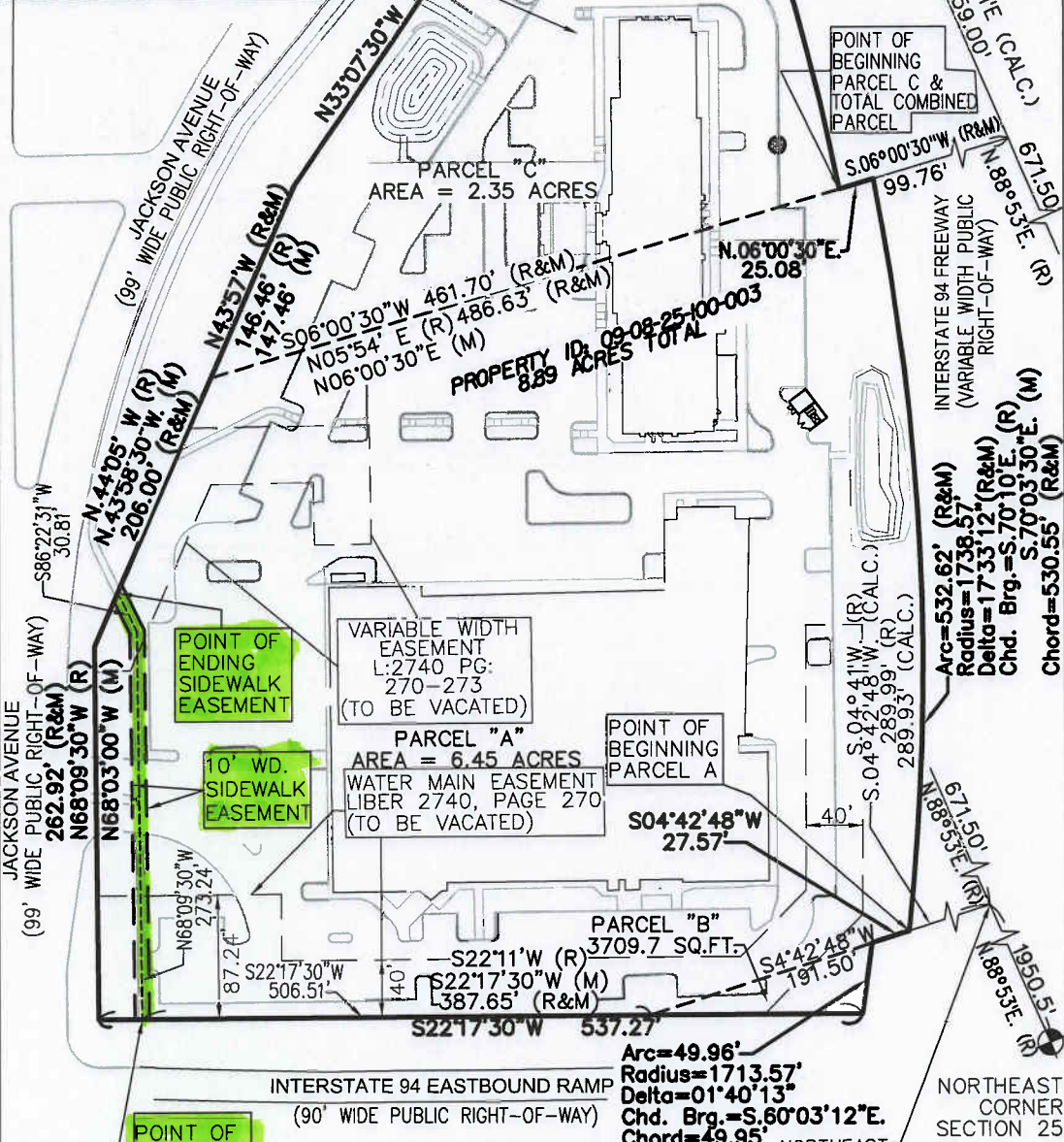


EXHIBIT "A"

DEED FROM MDOT TO SMITH'S L.1965, P.416
 NO DIRECT INGRESS-EGRESS FROM I-94 OR CONNECTING RAMP SUBJECT TO RESTRICTION AS DESCRIBED IN DEED LIBER 1965, PAGE 416.

N88°04'00"E
 9.22' (R&M)
 Arc=394.73'(R) 394.53'(M)
 Radius=1713.57' (R&M)
 Delta=13°11'54"(R), 13°11'31"(M)
 Chd. Brg.= S.85°20'00"E.(R)
 S.85°20'12"E.(M)
 Chord=393.86'(R) 393.66'(M)

NORTH 1/4 CORNER SECTION 25
 T-2-S., R-5-E.
 SCIO TWP.
 CITY OF ANN ARBOR
 WASHTENAW CO. MICHIGAN



POINT OF BEGINNING SIDEWALK EASEMENT

SKETCH OF DESCRIPTION SIDEWALK EASEMENT

A PART OF THE NORTH 1/2 OF SECTION 25,
 T.-2-S., R.-5-E., CITY OF ANN ARBOR,
 WASHTENAW COUNTY MICHIGAN

Arc=49.96'
 Radius=1713.57'
 Delta=01°40'13"
 Chd. Brg.=S.60°03'12"E.
 Chord=49.95'
 NORTHEAST CORNER OF ALLMENDINGER PARCEL L.29, P.73 OF DEEDS

Copyright © 2008, Giffels-Webster Engineers, Inc.
 No reproduction shall be made without the prior written consent of Giffels-Webster Engineers, Inc.

GWE
Giffels-Webster Engineers, Inc.
 ENGINEERS LAND SURVEYORS PLANNERS LANDSCAPE ARCHITECTS
 2871 BOND STREET, ROCHESTER HILLS, MI 48309
 (248) 852-3100

DATE: 02/10/09	CHECKED BY:	DATE:	SCALE: 1"=100'
DRAWN: SJC			SHEET: 1 OF 3
DESIGN: LDA			JOB No: 17485.00
SECTION: 25	T-2 S., R-5 E		