

Recyclables Processing

For the City of Ann Arbor
RFP #19-28

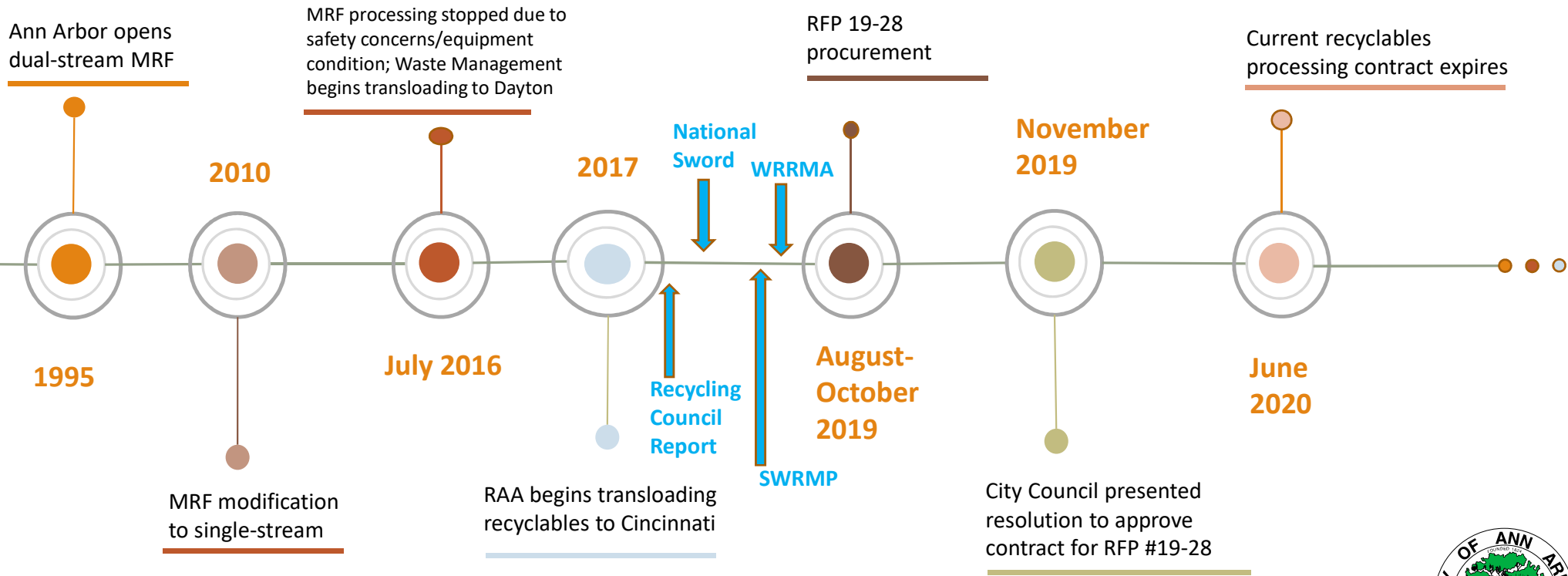
Environmental Commission

October 24, 2019

www.a2gov.org

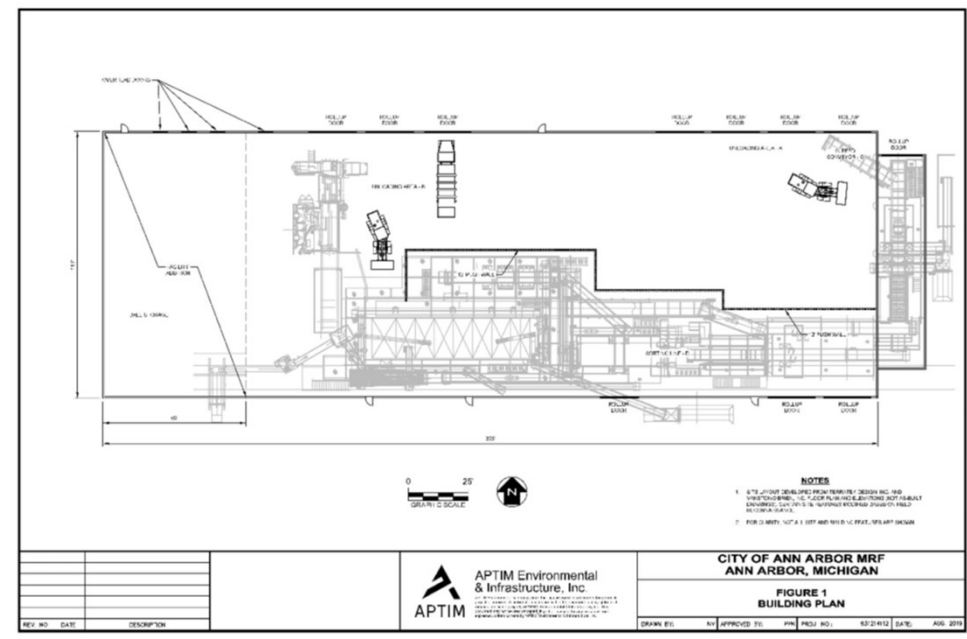


Timeline



Materials Recovery Facility History

- Opened in 1995 as a dual stream MRF with a waste transfer station also in the facility
 - Modified to single-stream in 2010
- 37,700 square feet, with 11,000 square foot tip-floor
- Processing equipment offline July 2016 due to safety concerns and condition of equipment
- Since then, transloading recyclables to separate MRF for processing
 - Sorting and baling of rich OCC (old corrugated cardboard) material done on-site
- Some repairs needed for aged structure



MRF History, continued



RFP #19-28

Scope

Provide the labor, equipment and materials necessary to sort, process and market Ann Arbor’s recyclable materials.

Option 1 (Transload)

Use the Materials Recovery Facility (MRF) to transload recyclables to another MRF for sorting and processing.

Option 2 (Replace MRF Equipment & Process)

Sort and process materials at the MRF.

Term

Initial term of five years starting July 1, 2020 with up to 10 years considered.

Proposals

Option 1 - Transload	Option 2 – Replace MRF Equipment & Process
Recycle Ann Arbor (RAA)	RAA
Emterra	

Proposal Evaluation Criteria	
20%	Proposer’s qualifications
15%	Past involvement with similar projects
35%	Proposed work plan
30%	Fee proposal

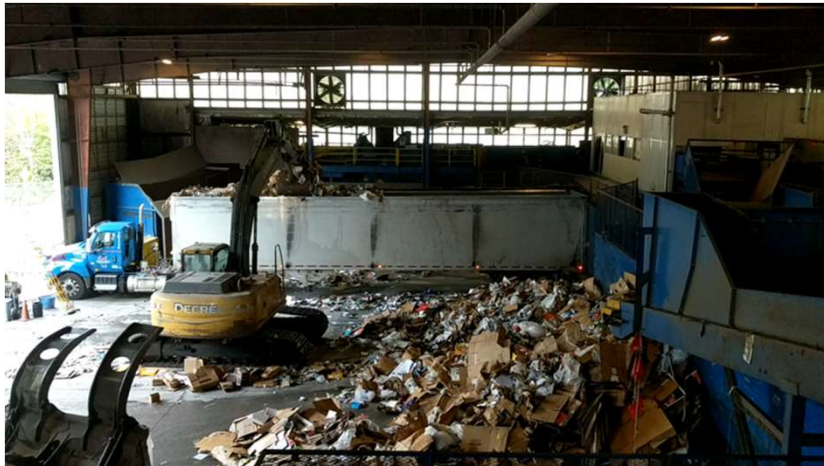


Option 1

TRANSLOADING



Option 1 – RAA

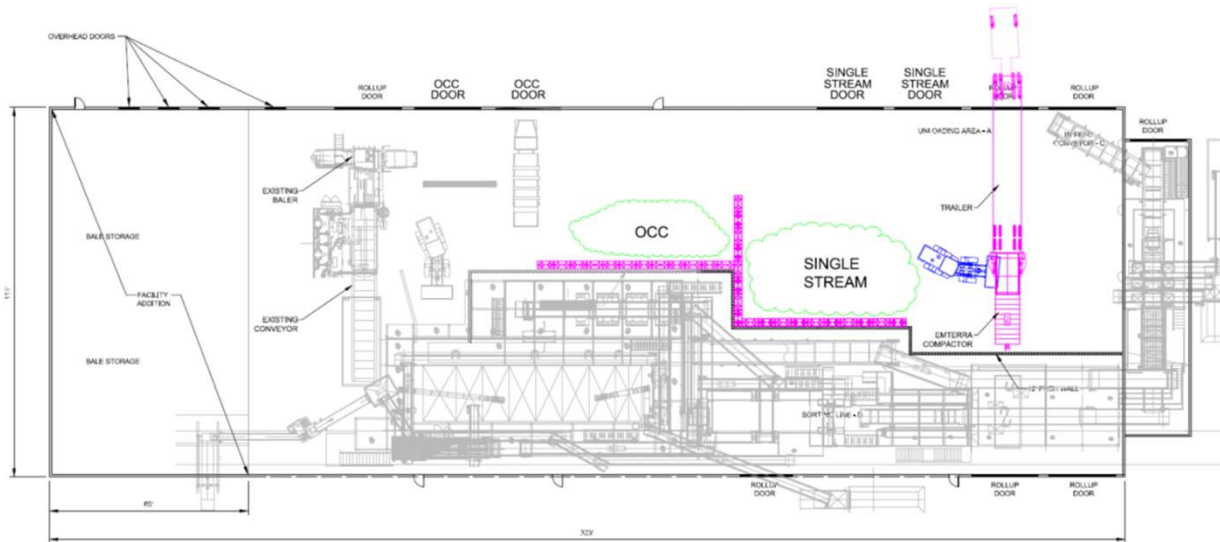


Experience: 42 years in Ann Arbor, including 2+ years of transloading at City's MRF

Processing Site: RRRASOC's MRF in Southfield, MI (40 miles) operated by Republic Services

Proposed Term: 5-year

Option 1 – Emterra



History: 43 years of collection and processing; providing services in 8 counties in MI

Processing Site: New Emterra MRF in Lansing, MI (70 miles)

Proposed Term: 10-year (will accept 5-year term)



Observations



Experience

- Local
- Canada and State

Organization

- Vertical Integration
- Subs/Team

Technology Investment



Option 2

REPLACE MRF EQUIPMENT AND PROCESS



Option 2 – RAA

Experience: RAA's first effort to lead a processing MRF

Staffing/Team: Multiple team members for re-equipping and establishing operations

- RAA, Machinex (equipment supplier), Rumpke, RRS, Pratt Industries,

Re-Equipping Approach: Includes refurbishment of some existing offline equipment; transloading to RRRASOC

- RFP stated other than baler, existing equipment not to be used

Cost Proposal: Base Service Fee includes Capital Cost (\$/month) and O&M Cost (\$/ton) as requested in RFP

Revenue Share Model: City does not receive commodity revenue until ACR (average commodity revenue) exceeds \$45/ton

- RFP Cost Proposal Form stated City to receive 100% of revenue until ACR exceeds Processing Fee



Observations



First-time processor

Variations from RFP

- Refurbish existing offline equipment
- Revenue share retained by RAA until ACR exceeds \$45/ton

Proposed schedule



Next Steps & Questions

- Staff receives final details/responses from Emterra and RAA
- Finalize selected contract scope/document
- Present Resolution for contract approval to City Council
 - Targeting November 18, 2019, if possible



Questions & Discussion

