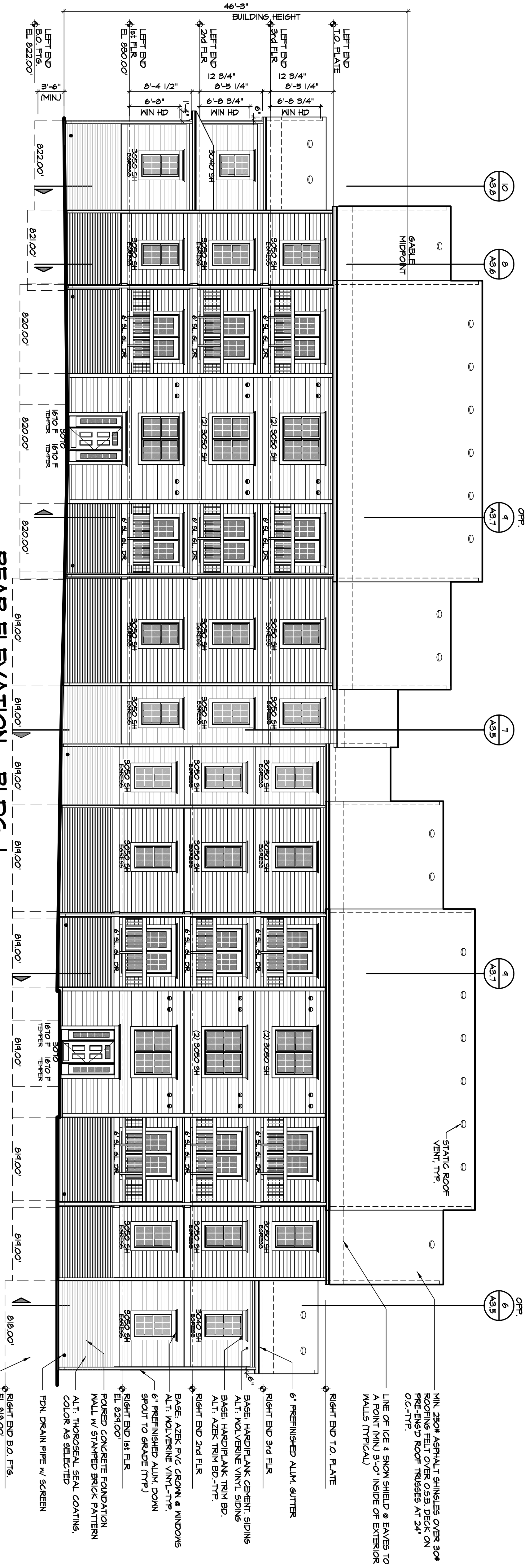


FRONT ELEVATION - BLDG. 1

SCALE: 1/8"=1'-0"

DATE:



REAR ELEVATION - BLDG. 1

SCALE: 1/8"=1'-0"

DATE:

PRELIMINARY - Design Team Only  
 Not for general Distribution  
 100% Review - 03.12.08

drawn kwk/tjd  
 date  
 01.22.08 MSHDA Review  
 sht  
 A2.1

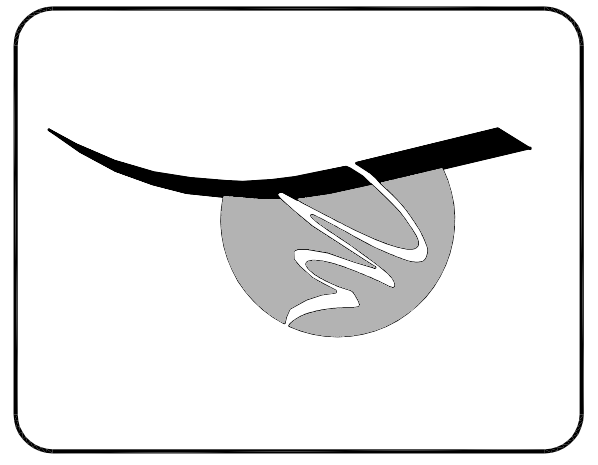
job 26190

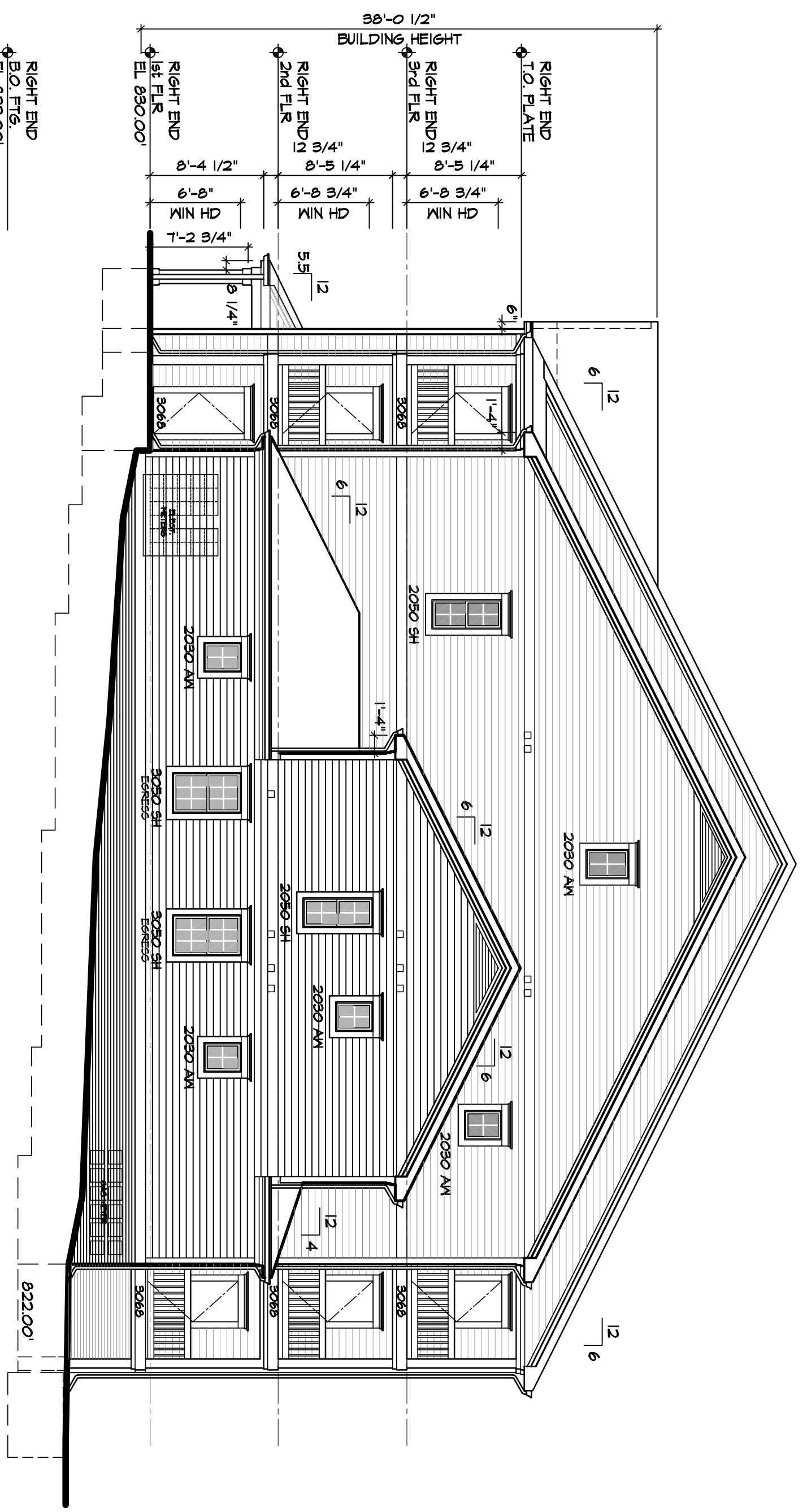
revisions  
 03.03.08 MSHDA Final  
 03.12.08 MSHDA Final/2

**J BRADLEY MOORE & ASSOCIATES**  
 4844 Jackson Road, #150 Ann Arbor, MI 48103 (734) 930-1500

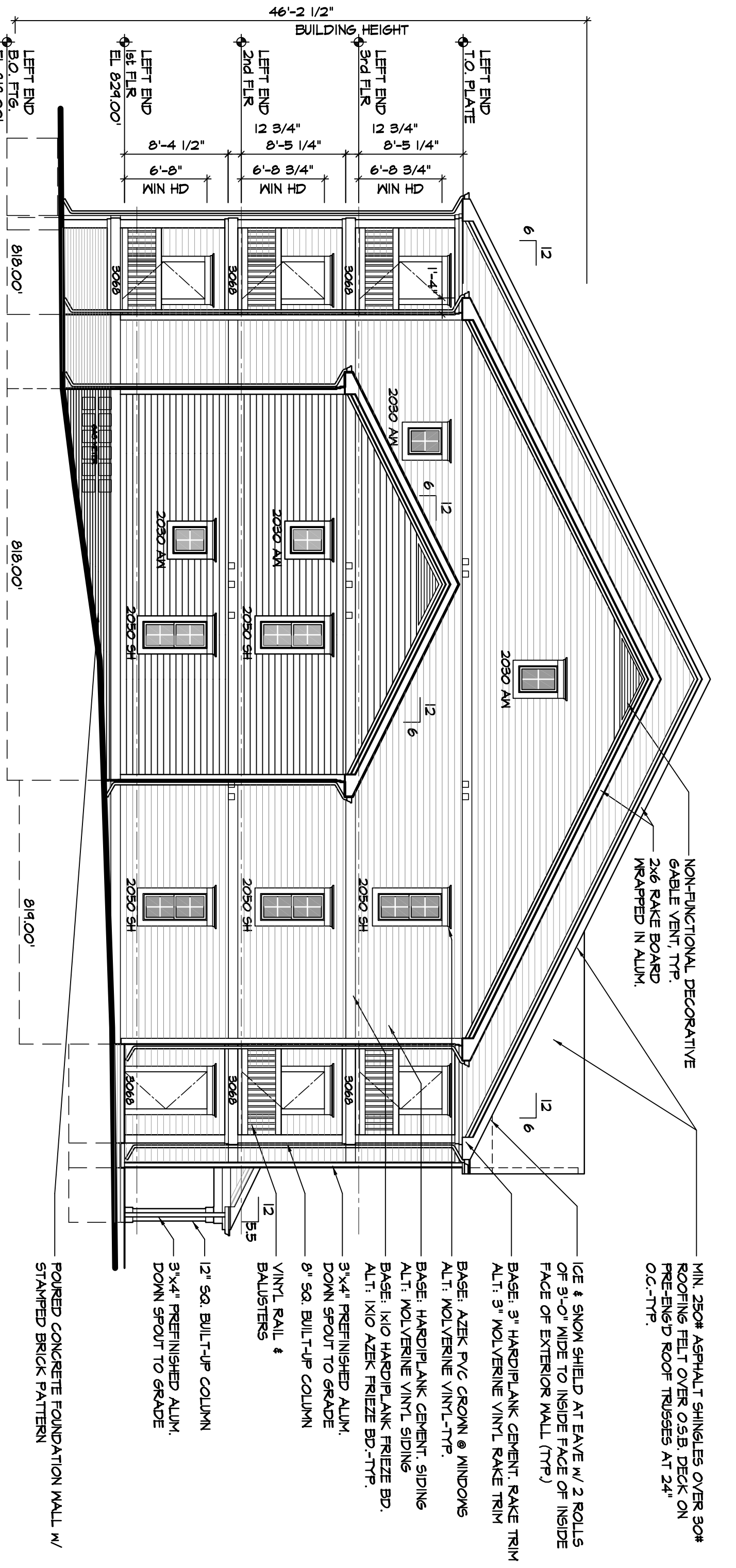
Burton Commons  
 MSHDA Project #3161  
 Front & Rear Elevations  
 Building 1

© Copyright 2007

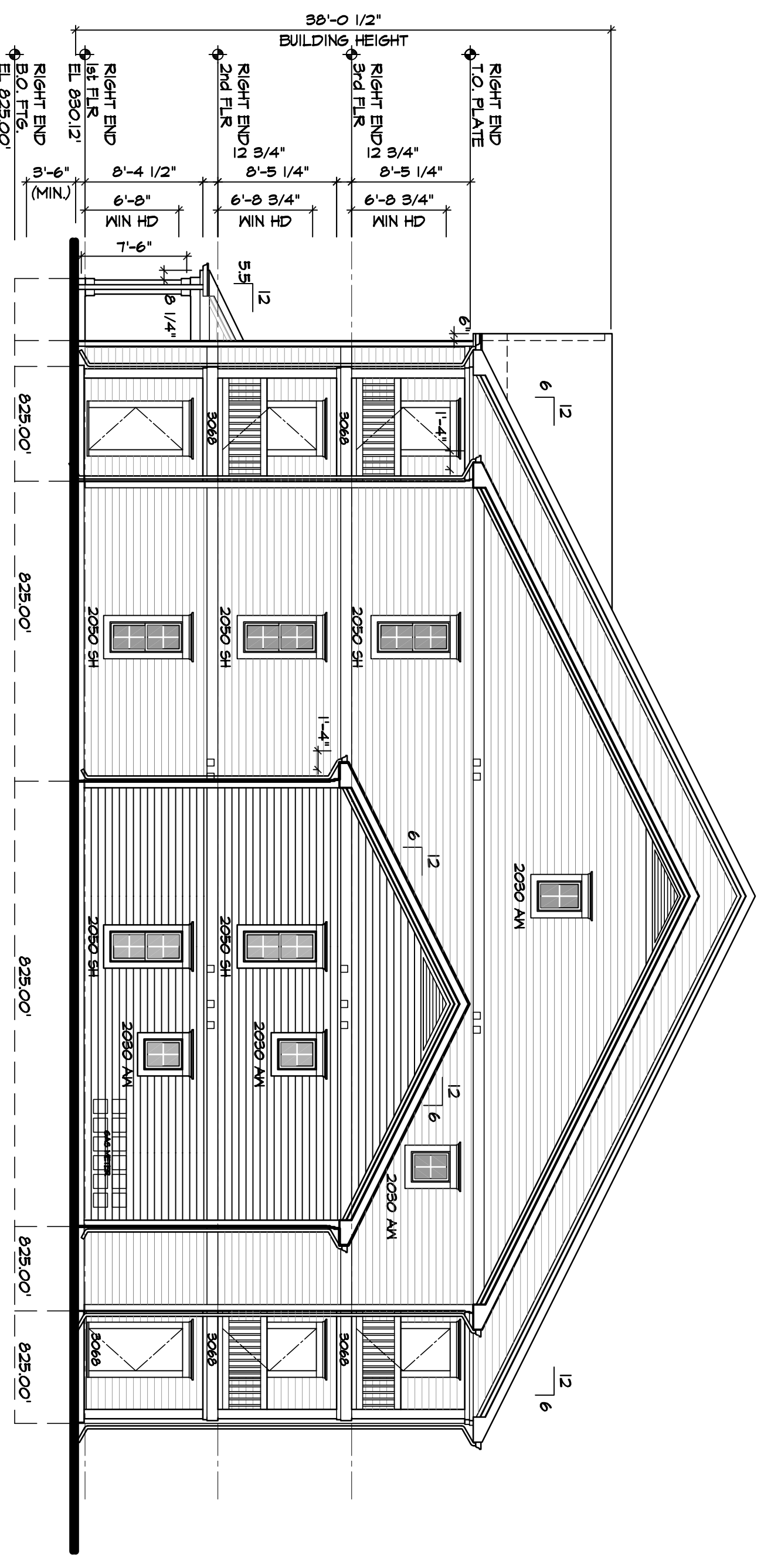




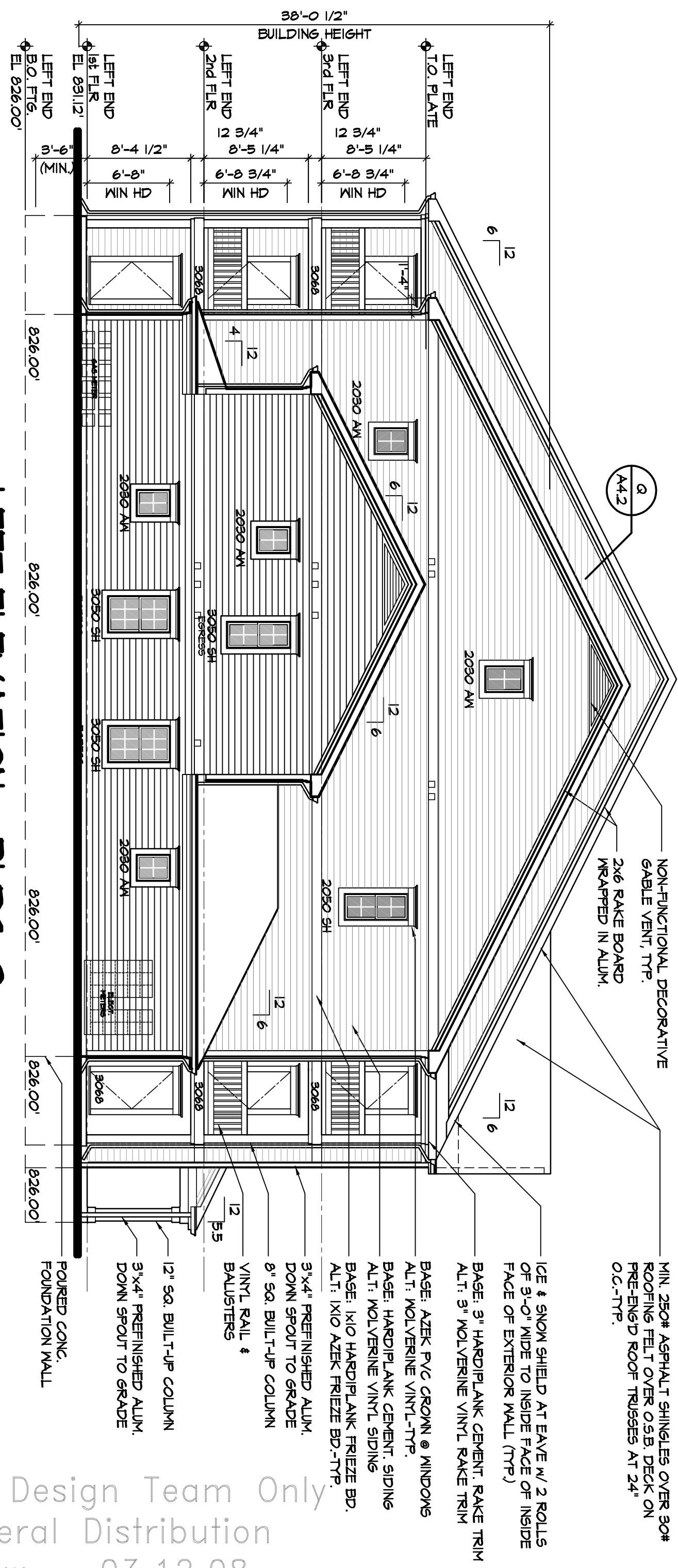
**RIGHT ELEVATION - BLDG. 1**  
SCALE: 1/8"=1'-0"  
RELEV



**LEFT ELEVATION - BLDG. 1**  
SCALE: 1/8"=1'-0"  
RELEV



**RIGHT ELEVATION - BLDG. 2**  
SCALE: 1/8"=1'-0"  
RELEV



**LEFT ELEVATION - BLDG. 2**  
SCALE: 1/8"=1'-0"  
RELEV

MIN. 250# ASPHALT SHINGLES OVER 30# ROOFING FELT OVER OSB DECK ON PRE-ENG'D ROOF TRUSSES AT 24" O.C.-TYP.

ICE & SNOW SHIELD AT EAVE W/ 2 ROLLS OF 3'-0" WIDE TO INSIDE FACE OF INSIDE FACE OF EXTERIOR WALL (TYP.)

BASE: 3" MOLYBRINE VINYL RAKE TRIM

BASE: AZEK PVC CROWN & WINDOWS ALT. MOLYBRINE VINYL-TYP.

BASE: HANDPLANK CEMENT SIDING

BASE: ALTI. MOLYBRINE VINYL SIDING

BASE: I/O HANDPLANK FREEZE BD. ALT. I/O AZEK FREEZE BD.-TYP.

3"x4" PREFINISHED ALUM. DOWN SPOUT TO GRADE

8" SQ. BUILT-UP COLUMN VINYL RAIL & BALUSTERS

12" SQ. BUILT-UP COLUMN 3"x4" PREFINISHED ALUM. DOWN SPOUT TO GRADE

FOUNDED CONCR. FOUNDATION WALL W/ STAMPED BRICK PATTERN

MIN. 250# ASPHALT SHINGLES OVER 30# ROOFING FELT OVER OSB DECK ON PRE-ENG'D ROOF TRUSSES AT 24" O.C.-TYP.

NON-FUNCTIONAL DECORATIVE GABLE VENT, TYP. 2x6 RAKE BOARD RECAPED IN ALUM.

ICE & SNOW SHIELD AT EAVE W/ 2 ROLLS OF 3'-0" WIDE TO INSIDE FACE OF INSIDE FACE OF EXTERIOR WALL (TYP.)

BASE: 3" MOLYBRINE VINYL RAKE TRIM

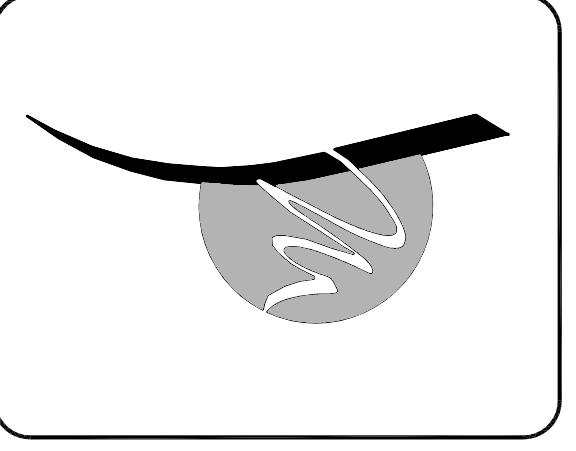
BASE: AZEK PVC CROWN & WINDOWS ALT. MOLYBRINE VINYL-TYP.

BASE: HANDPLANK CEMENT SIDING

BASE: ALTI. MOLYBRINE VINYL SIDING

BASE: I/O HANDPLANK FREEZE BD. ALT. I/O AZEK FREEZE BD.-TYP.

PRELIMINARY - Design Team Only  
Not for general Distribution  
100% Review - 03.12.08



© Copyright 2007

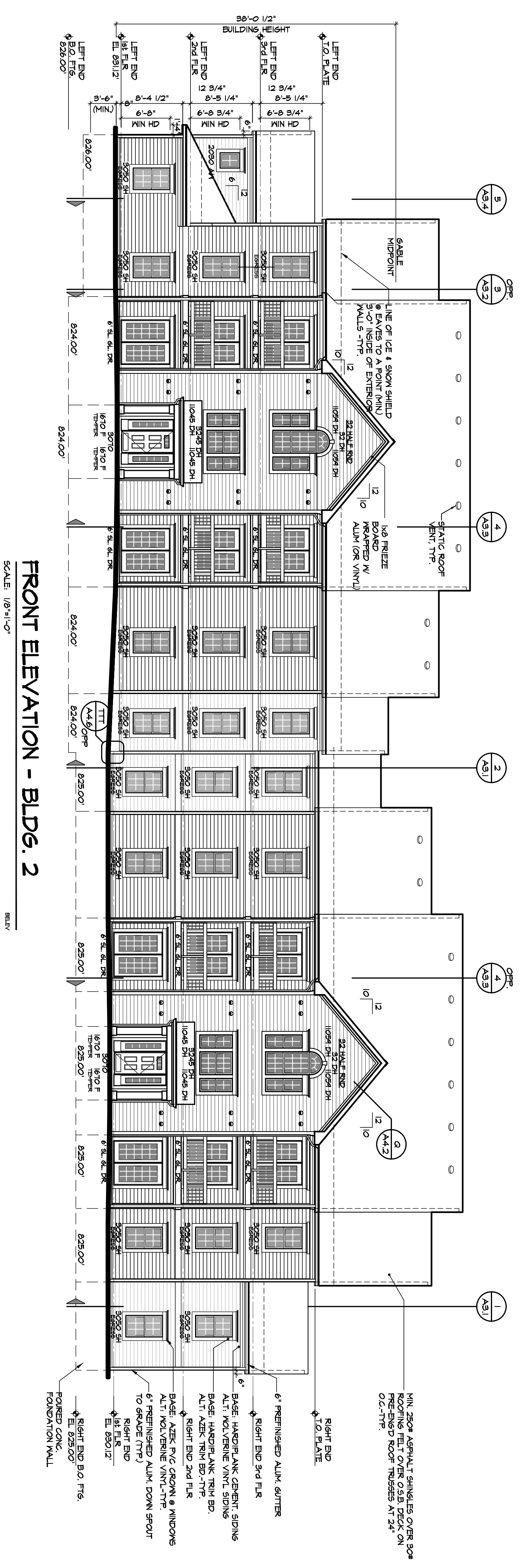
Burton Commons  
MSHDA Project #3161  
Side Elevations  
Buildings 1 & 2

**J BRADLEY MOORE & ASSOCIATES**  
4844 Jackson Road, #150 Ann Arbor, MI 48103 (734) 930-1500

revisions  
03/03/08 MSHDA Final  
03/12/08 MSHDA Final/2

job 26190

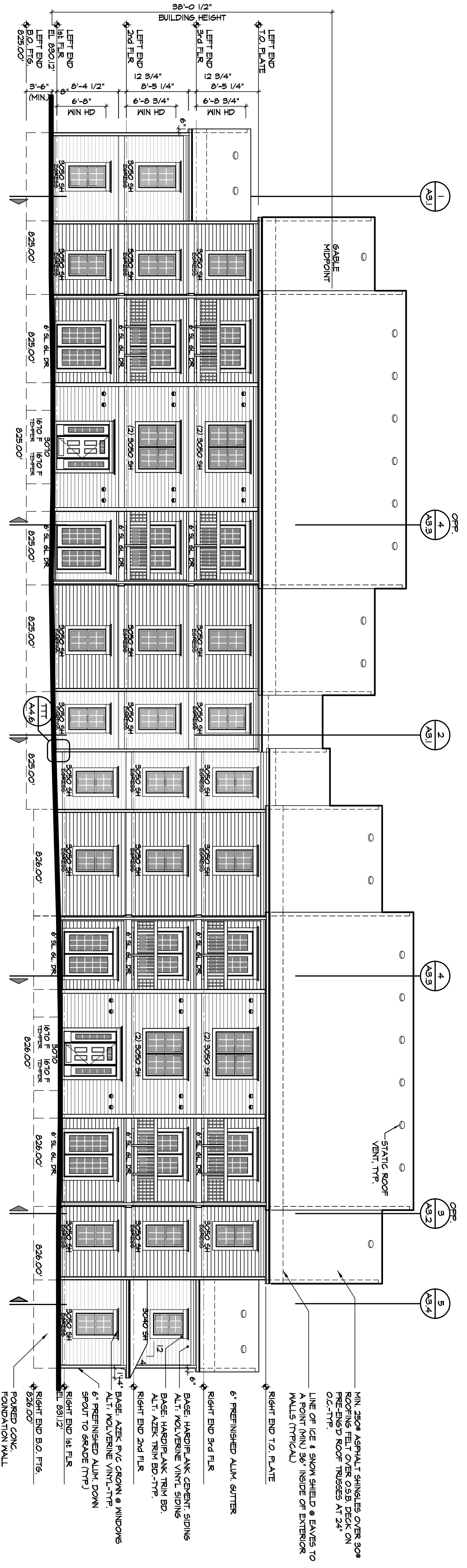
drawn kwk/tjd  
date 01.22.08 MSHDA Review  
sh A2.6



**FRONT ELEVATION - BLDG. 2**

SCALE: 1/8"=1'-0"

RELEV



**REAR ELEVATION - BLDG. 2**

SCALE: 1/8"=1'-0"

RELEV

MIN. 250# ASPHALT SHINGLES OVER 30# ROOFING FELT OVER OSB DECK ON PRE-ENG ROOF TRUSSES AT 24" O.C.-TYP.

RIGHT END TO PLATE

RIGHT END 3'-4" FLR

6" PREFINISHED ALUM. GUTTER

BASE, HANDPLANK CEMENT SIDING

ALT. POLYURETHANE VINYL SIDING

BASE, HANDPLANK TRIM BP.

ALT. AZEK TRIM BD.-TYP.

RIGHT END 2ND FLR

BASE, AZEK PVC CORON. @ WINDOWS

ALT. POLYURETHANE VINYL-TYP.

6" PREFINISHED ALUM. DOWN SPOUT TO GRADE (TYP)

RIGHT END

2ND FLR

EL. 8911.2

RIGHT END B.O. FTG.

EL. 825.00

FOAMED CONC.

FOUNDATION WALL

RIGHT END 1st FLR

EL. 8911.2

RIGHT END 3rd FLR

6" PREFINISHED ALUM. GUTTER

BASE, HANDPLANK CEMENT SIDING

ALT. POLYURETHANE VINYL SIDING

BASE, HANDPLANK TRIM BP.

ALT. AZEK TRIM BD.-TYP.

RIGHT END 2ND FLR

BASE, AZEK PVC CORON. @ WINDOWS

ALT. POLYURETHANE VINYL-TYP.

6" PREFINISHED ALUM. DOWN SPOUT TO GRADE (TYP)

RIGHT END

2ND FLR

EL. 8911.2

RIGHT END B.O. FTG.

EL. 825.00

FOAMED CONC.

FOUNDATION WALL

PRELIMINARY - Design Team Only  
Not for general Distribution  
100% Review - 03.12.08

drawn kwk/tjd  
date  
01.22.08 MSHDA Review  
sht  
A2.2

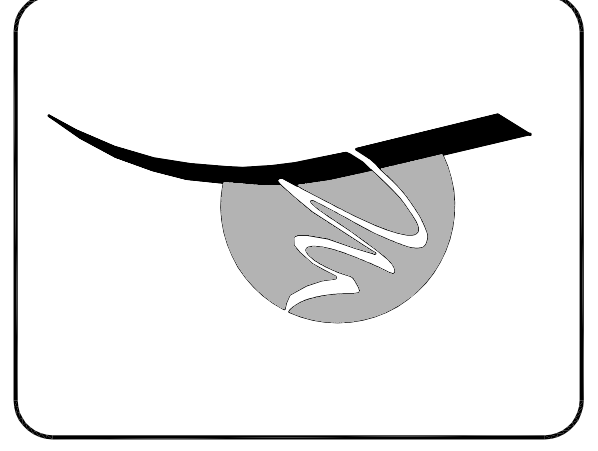
job 26190

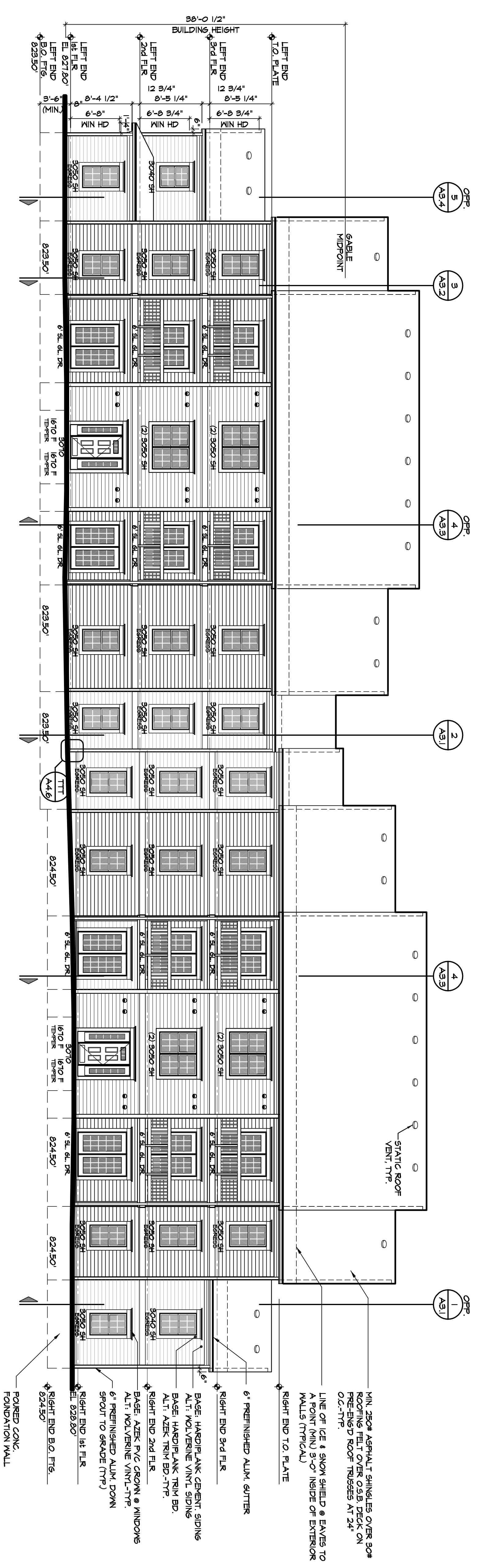
revisions  
03.03.08 MSHDA Final  
03.12.08 MSHDA Final/2

**J BRADLEY MOORE & ASSOCIATES**  
4844 Jackson Road, #150 Ann Arbor, MI 48103 (734) 930-1500

Burton Commons  
MSHDA Project #3161  
Front & Rear Elevations  
Building 2

© Copyright 2007

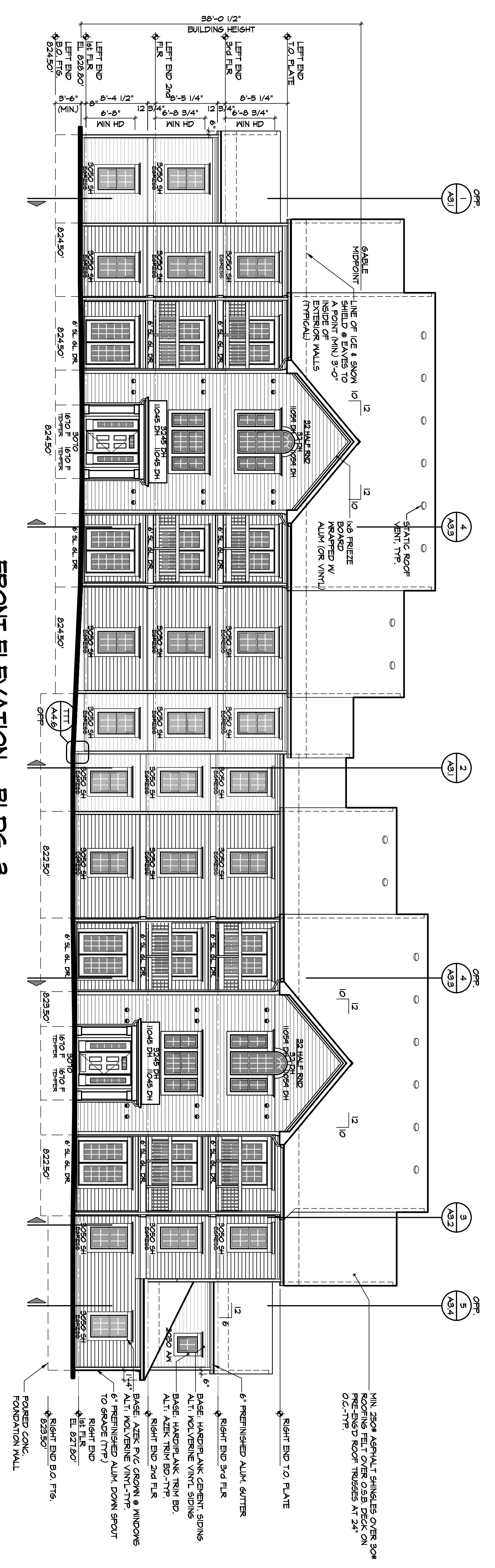




**REAR ELEVATION - BLDG. 3**

SCALE: 1/8"=1'-0"

RELV



**FRONT ELEVATION - BLDG. 3**

SCALE: 1/8"=1'-0"

RELV

PRELIMINARY - Design Team Only  
 Not for general Distribution  
 100% Review - 03.12.08

drawn kwk/tjd  
 date  
 01.22.08 MSHDA Review  
 sht  
**A2.3**

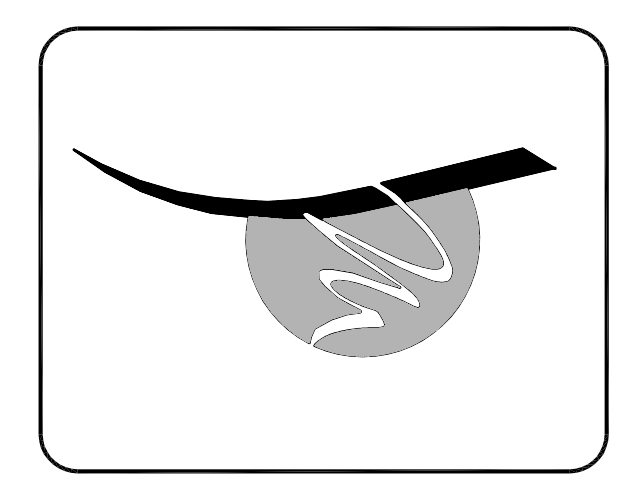
job  
**26190**

revisions  
 03.03.08 MSHDA Final  
 03.12.08 MSHDA Final/2

**J BRADLEY MOORE & ASSOCIATES**  
 4844 Jackson Road, #150 Ann Arbor, MI 48103 (734) 930-1500

Burton Commons  
 MSHDA Project #3161  
 Front & Rear Elevations  
 Building 3

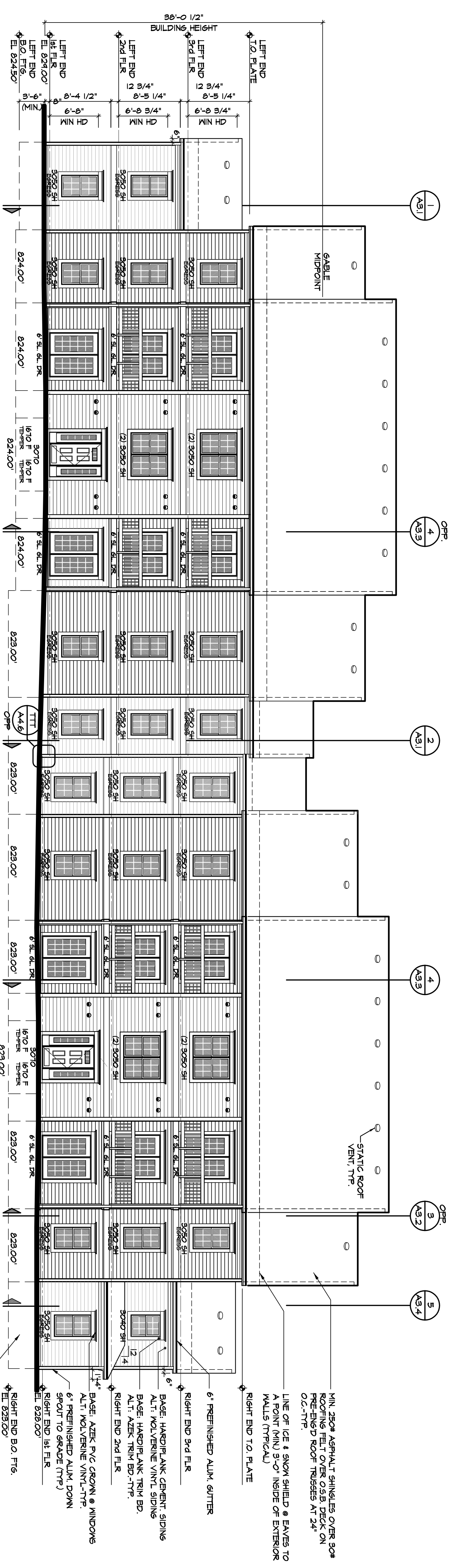
© Copyright 2007



**REAR ELEVATION - BLDG. 4**

SCALE: 1/8"=1'-0"

DATE:

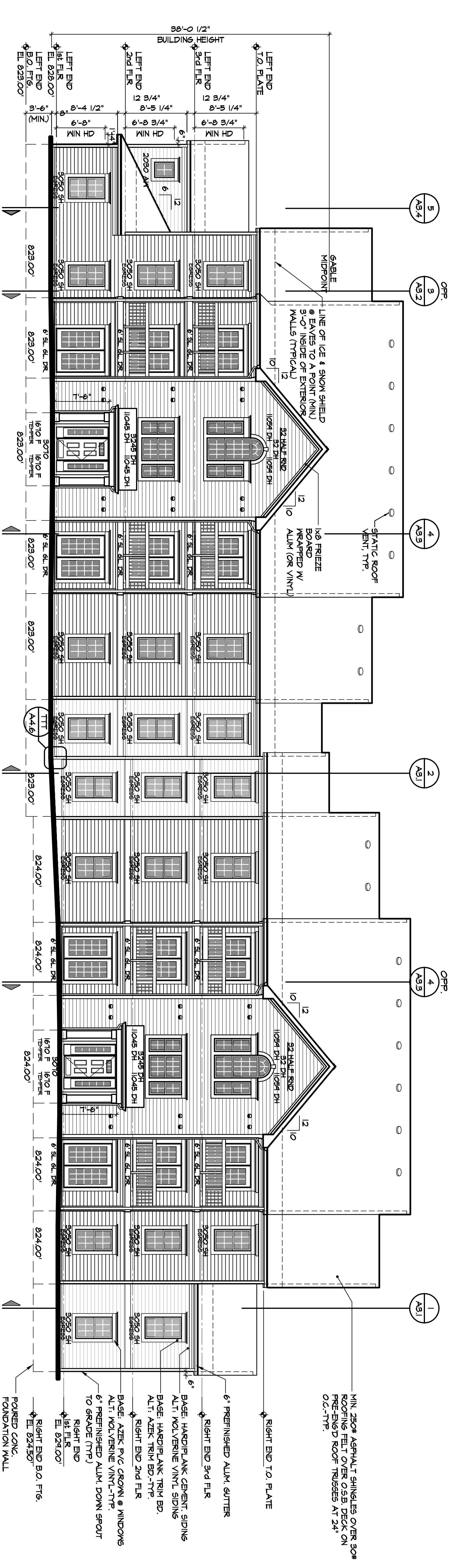


- MIN. 30# ASPHALT SHINGLES OVER 30# ROOFING FELT OVER O.S.B. DECK ON PRE-ENG'D ROOF TRUSSES AT 24" O.C.-TYP.
- LINE OF ICE & SNOW SHIELD @ EAVES TO A POINT (MIN) 3'-0" INSIDE OF EXTERIOR WALLS (TYPICAL)
- RIGHT END T.O. PLATE
- 6" PREFINISHED ALUM. GUTTER
- RIGHT END 3rd FLR
- BASE: HANDPLANK CEMENT SIDING
- ALT: WOLVERINE VINYL SIDING
- BASE: HANDPLANK TRIM BD.
- ALT: WOLVERINE VINYL-TYP.
- RIGHT END 2nd FLR
- BASE: AZEK PVC CROWN @ WINDOWS
- ALT: WOLVERINE VINYL-TYP.
- 6" PREFINISHED ALUM. DOWN SPOUT TO GRADE (TYP)
- RIGHT END 1st FLR
- RIGHT END B.O. FTG. EL. 823.00'
- FOUNDER CONC. FOUNDATION WALL

**FRONT ELEVATION - BLDG. 4**

SCALE: 1/8"=1'-0"

DATE:



- MIN. 30# ASPHALT SHINGLES OVER 30# ROOFING FELT OVER O.S.B. DECK ON PRE-ENG'D ROOF TRUSSES AT 24" O.C.-TYP.
- LINE OF ICE & SNOW SHIELD @ EAVES TO A POINT (MIN) 3'-0" INSIDE OF EXTERIOR WALLS (TYPICAL)
- RIGHT END T.O. PLATE
- 6" PREFINISHED ALUM. GUTTER
- RIGHT END 3rd FLR
- BASE: HANDPLANK CEMENT SIDING
- ALT: WOLVERINE VINYL SIDING
- BASE: HANDPLANK TRIM BD.
- ALT: AZEK TRIM BD.-TYP.
- RIGHT END 2nd FLR
- BASE: AZEK PVC CROWN @ WINDOWS
- ALT: WOLVERINE VINYL-TYP.
- 6" PREFINISHED ALUM. DOWN SPOUT TO GRADE (TYP)
- RIGHT END 1st FLR
- RIGHT END B.O. FTG. EL. 823.50'
- FOUNDER CONC. FOUNDATION WALL

PRELIMINARY - Design Team Only  
 Not for general Distribution  
 100% Review - 03.12.08

drawn kwk/tjd  
 date  
 01.22.08 MSHDA Review  
 sht  
**A2.4**

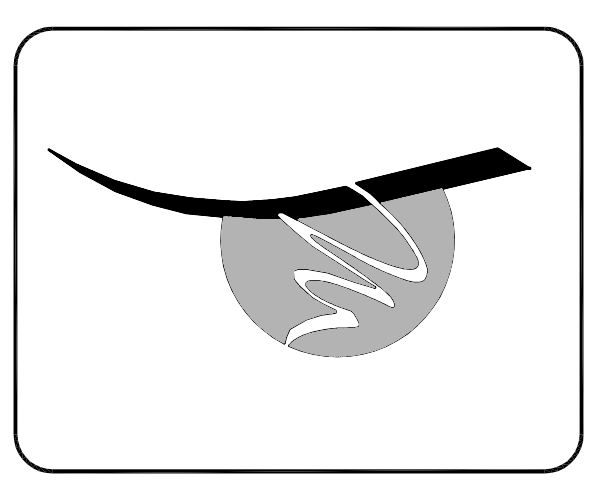
job  
**26190**

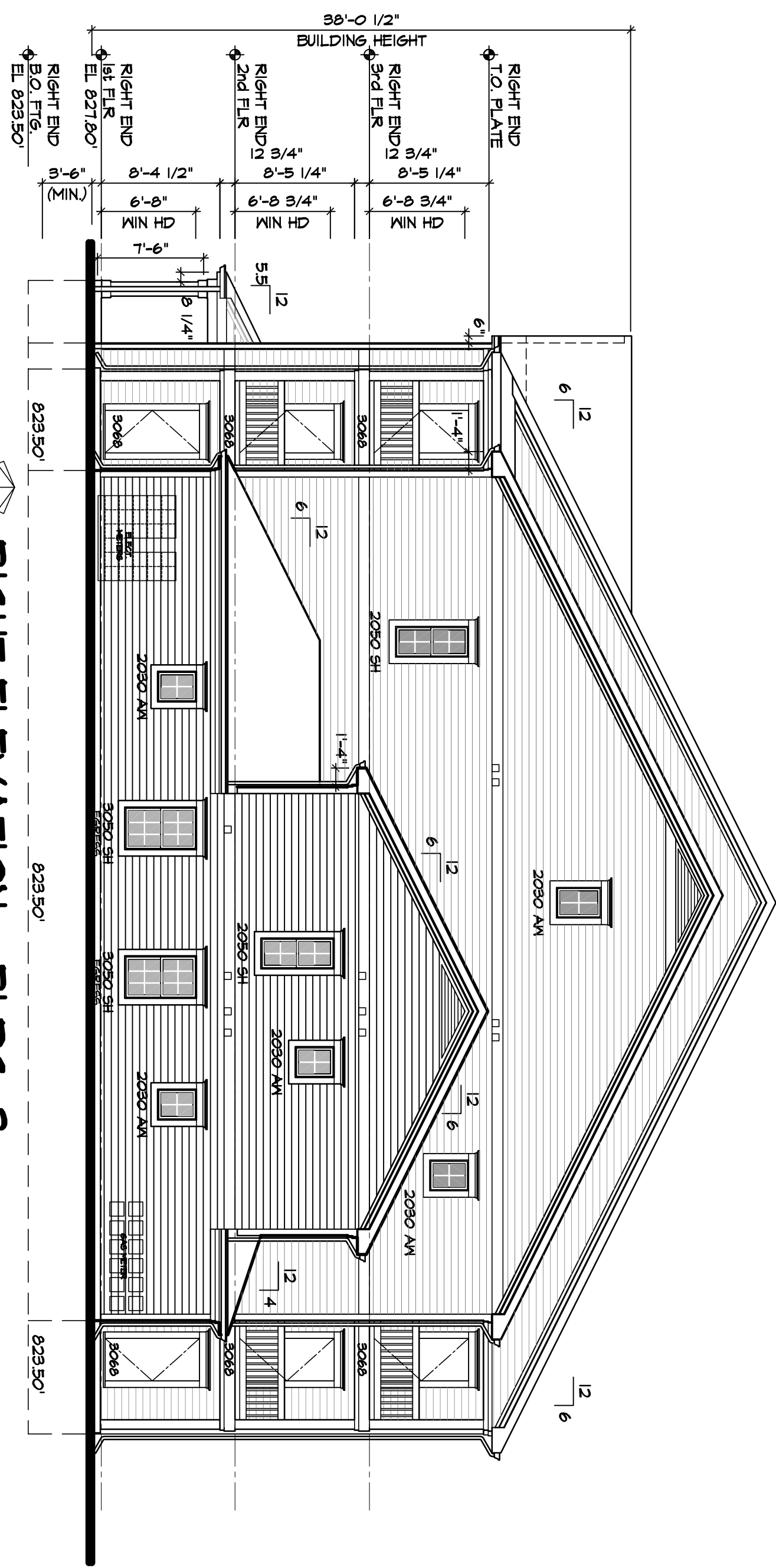
revisions  
 03.03.08 MSHDA Final  
 03.12.08 MSHDA Final/2

**J BRADLEY MOORE & ASSOCIATES**  
 4844 Jackson Road, #150 Ann Arbor, MI 48103 (734) 930-1500

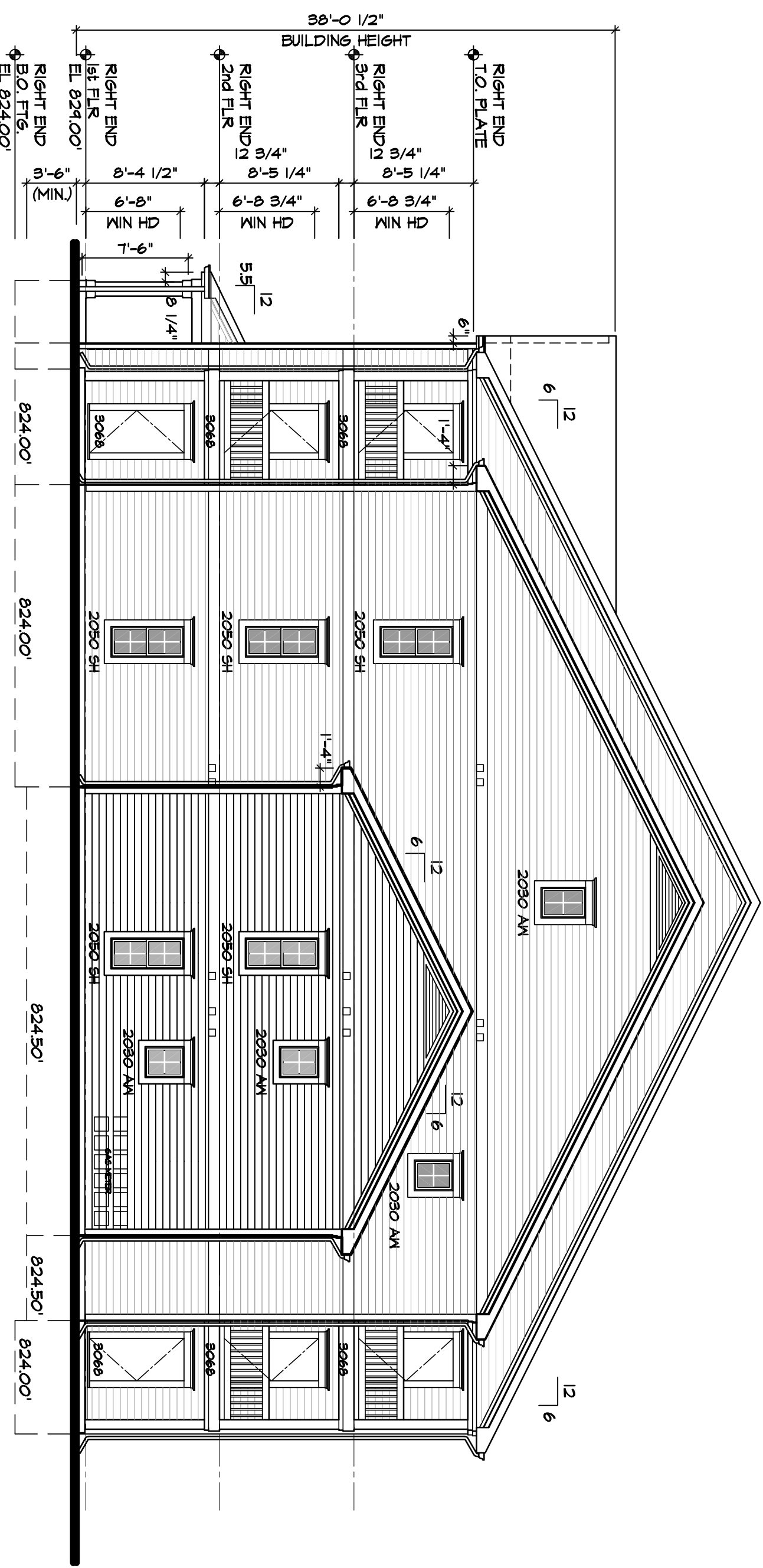
Burton Commons  
 MSHDA Project #3161  
 Front & Rear Elevations  
 Building 4

© Copyright 2007

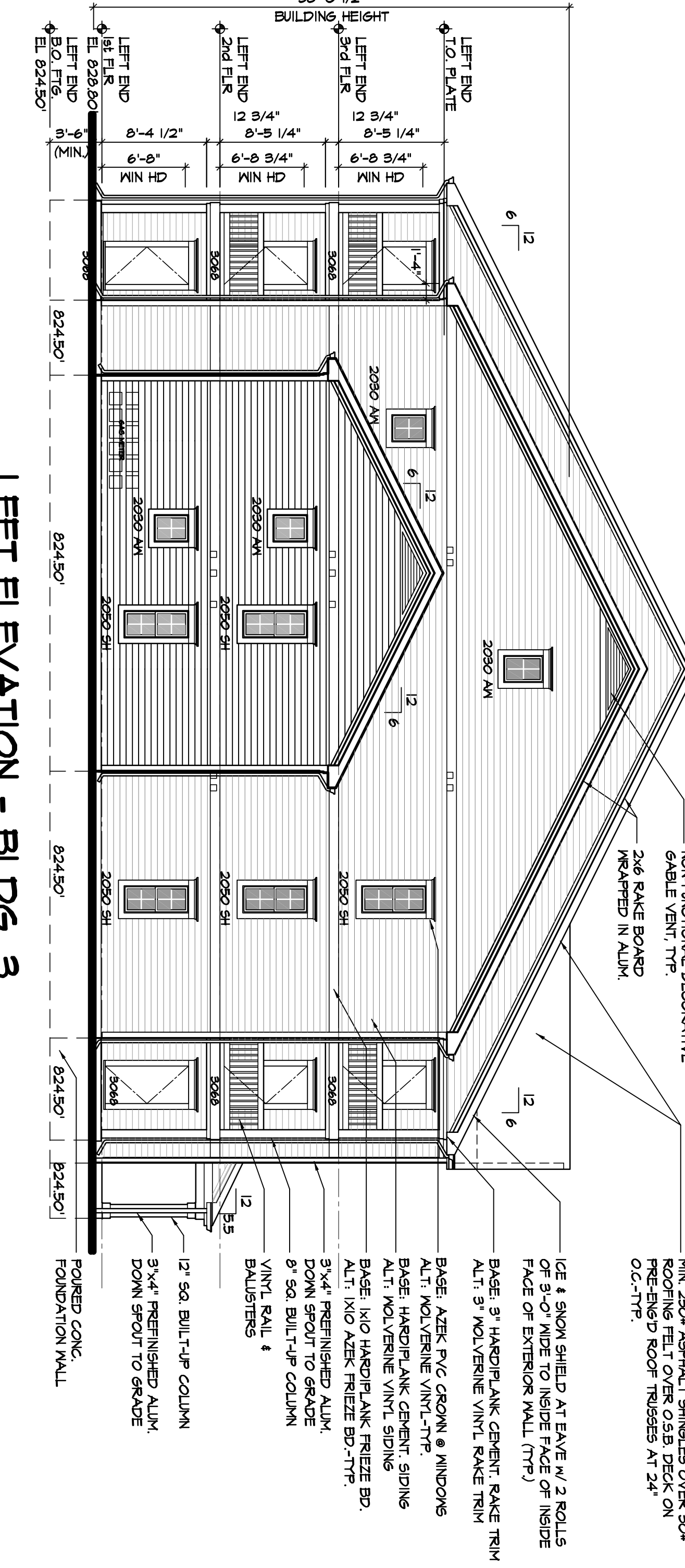




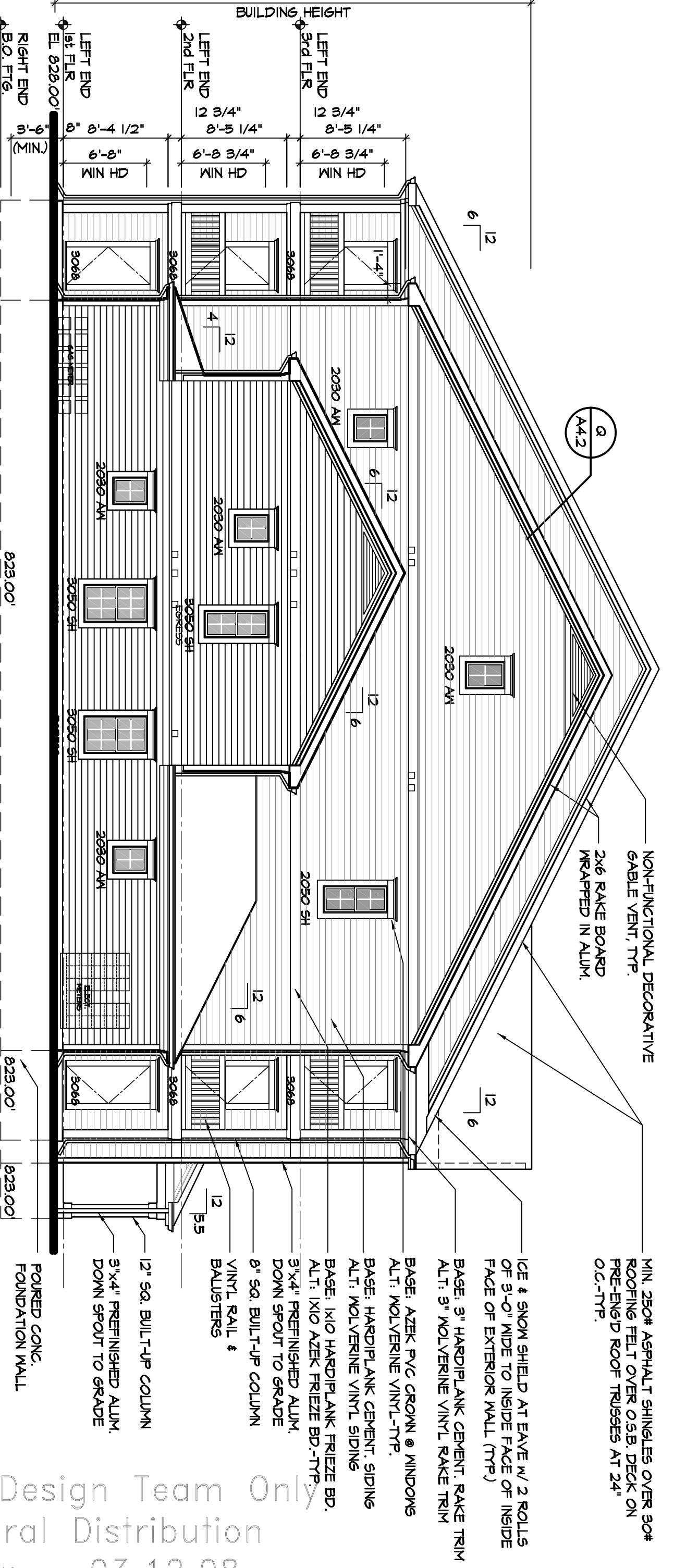
**RIGHT ELEVATION - BLDG. 3**  
SCALE: 1/8"=1'-0"  
DATE: 01/22/08



**RIGHT ELEVATION - BLDG. 4**  
SCALE: 1/8"=1'-0"  
DATE: 01/22/08



**LEFT ELEVATION - BLDG. 3**  
SCALE: 1/8"=1'-0"  
DATE: 01/22/08



**LEFT ELEVATION - BLDG. 4**  
SCALE: 1/8"=1'-0"  
DATE: 01/22/08

MIN. 260# ASPHALT SHINGLES OVER 3/8" ROOFING FELT OVER 1/2" OSB ON PRE-ENG'D ROOF TRUSSES AT 24" O.C.-TYP.

ICE & SNOW SHIELD AT EAVE W/ 2 ROLLS OF 3'-0" WIDE TO INSIDE FACE OF INSIDE FACE OF EXTERIOR WALL (TYP)

BASE: 3" HANDIPLANK CEMENT RAKE TRIM

BASE: AZEK PVC CROWN & WINDOWS

ALT: WOLVERINE VINYL-TYP

BASE: HANDIPLANK CEMENT SIDING

ALT: WOLVERINE VINYL SIDING

BASE: 1X0 HANDIPLANK FREEZE BD.

ALT: 3/4" PREFINISHED ALUM.

8" SQ. BUILT-UP COLUMN

VINYL RAIL & BALUSTERS

12" SQ. BUILT-UP COLUMN

3"x4" PREFINISHED ALUM. DOWN SPOUT TO GRADE

FOUNDED CONG. FOUNDATION WALL

MIN. 260# ASPHALT SHINGLES OVER 3/8" ROOFING FELT OVER 1/2" OSB ON PRE-ENG'D ROOF TRUSSES AT 24" O.C.-TYP.

ICE & SNOW SHIELD AT EAVE W/ 2 ROLLS OF 3'-0" WIDE TO INSIDE FACE OF INSIDE FACE OF EXTERIOR WALL (TYP)

BASE: 3" HANDIPLANK CEMENT RAKE TRIM

BASE: AZEK PVC CROWN & WINDOWS

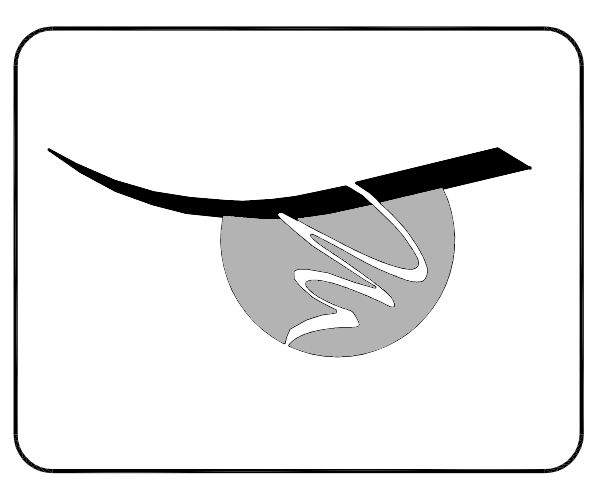
ALT: WOLVERINE VINYL-TYP

BASE: HANDIPLANK CEMENT SIDING

ALT: WOLVERINE VINYL SIDING

BASE: 1X0 HANDIPLANK FREEZE BD.

PRELIMINARY - Design Team Only  
Not for general Distribution  
100% Review - 03.12.08



© Copyright 2007

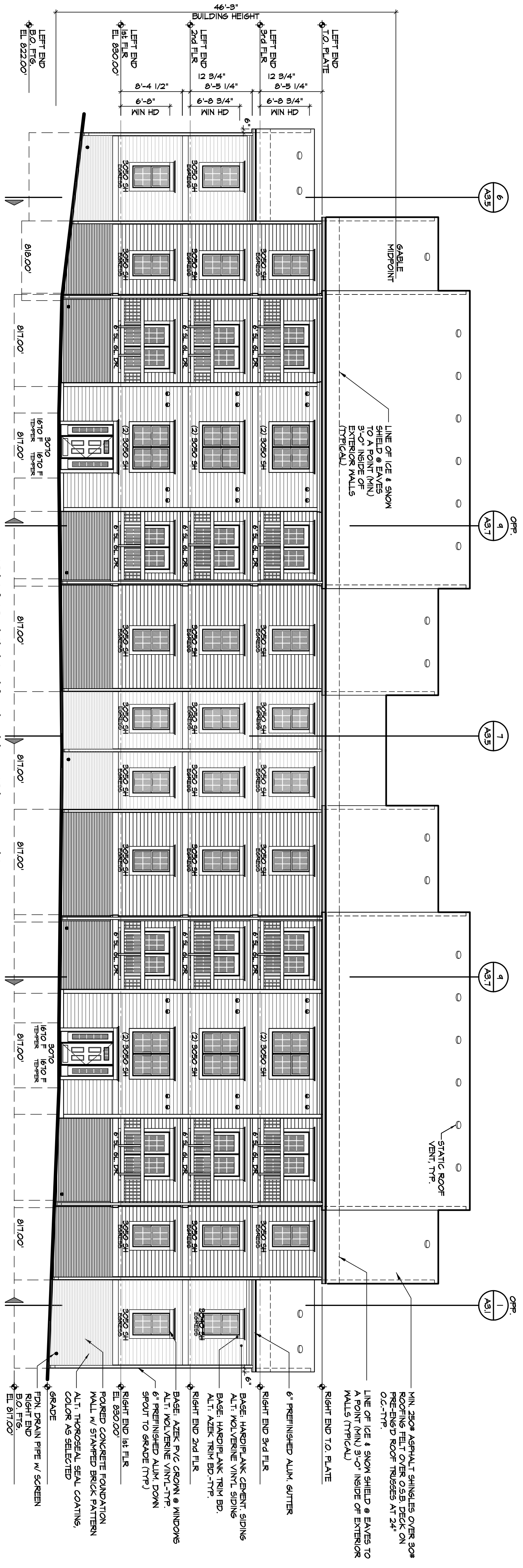
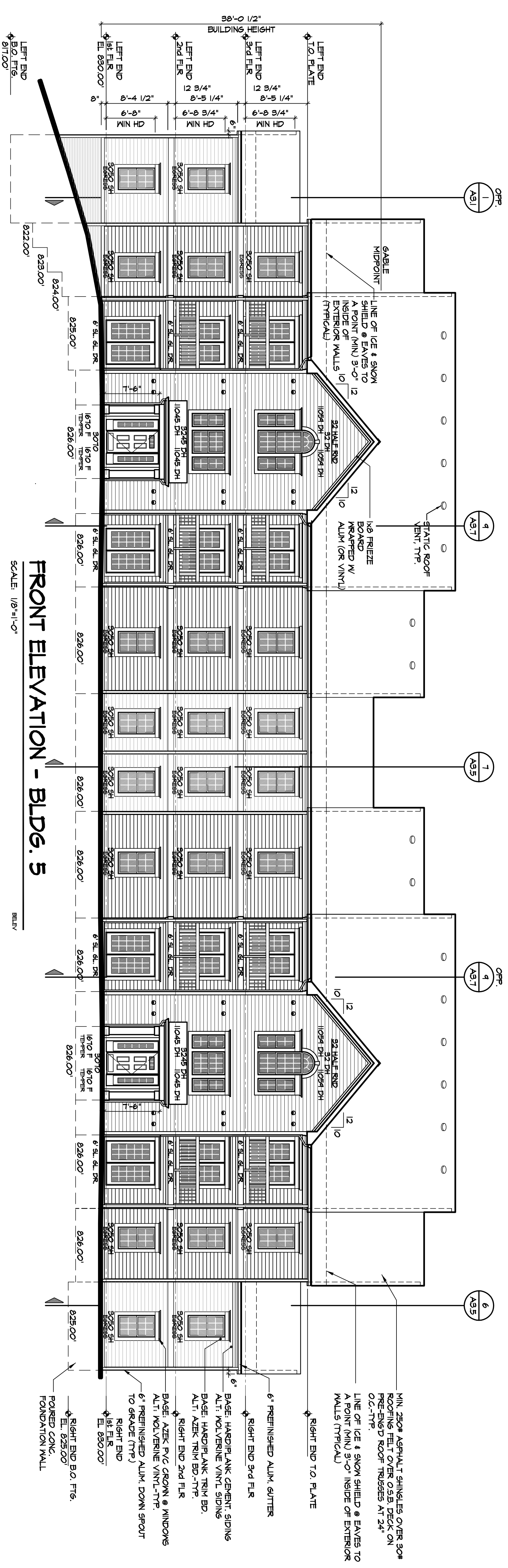
Burton Commons  
MSHDA Project #3161  
Side Elevations  
Buildings 3 & 4

**J BRADLEY MOORE & ASSOCIATES**  
4844 Jackson Road, #150 Ann Arbor, MI 48103 (734) 930-1500

revisions  
03/03/08 MSHDA Final  
03/12/08 MSHDA Final/2

job 26190

drawn kwk/tjd  
date 01.22.08 MSHDA Review  
sh A2.7



**REAR ELEVATION - BLDG. 5**

SCALE: 1/8"=1'-0"

RELAY

**FRONT ELEVATION - BLDG. 5**

SCALE: 1/8"=1'-0"

RELAY

PRELIMINARY - Design Team Only  
 Not for general Distribution  
 100% Review - 03.12.08

drawn kwk/tjd  
 date  
 01.22.08 MSHDA Review  
 sht  
**A2.5**

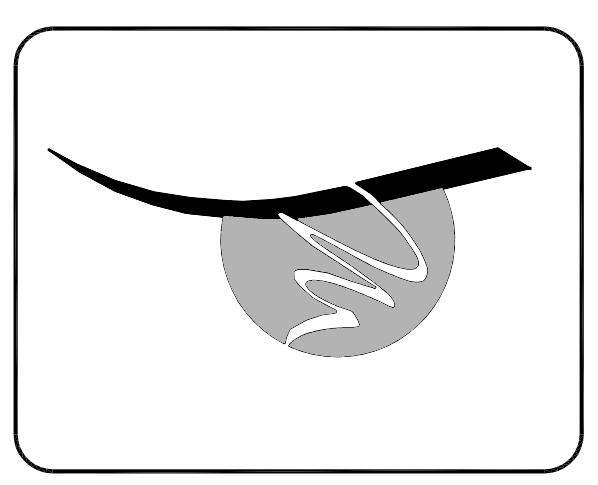
job  
**26190**

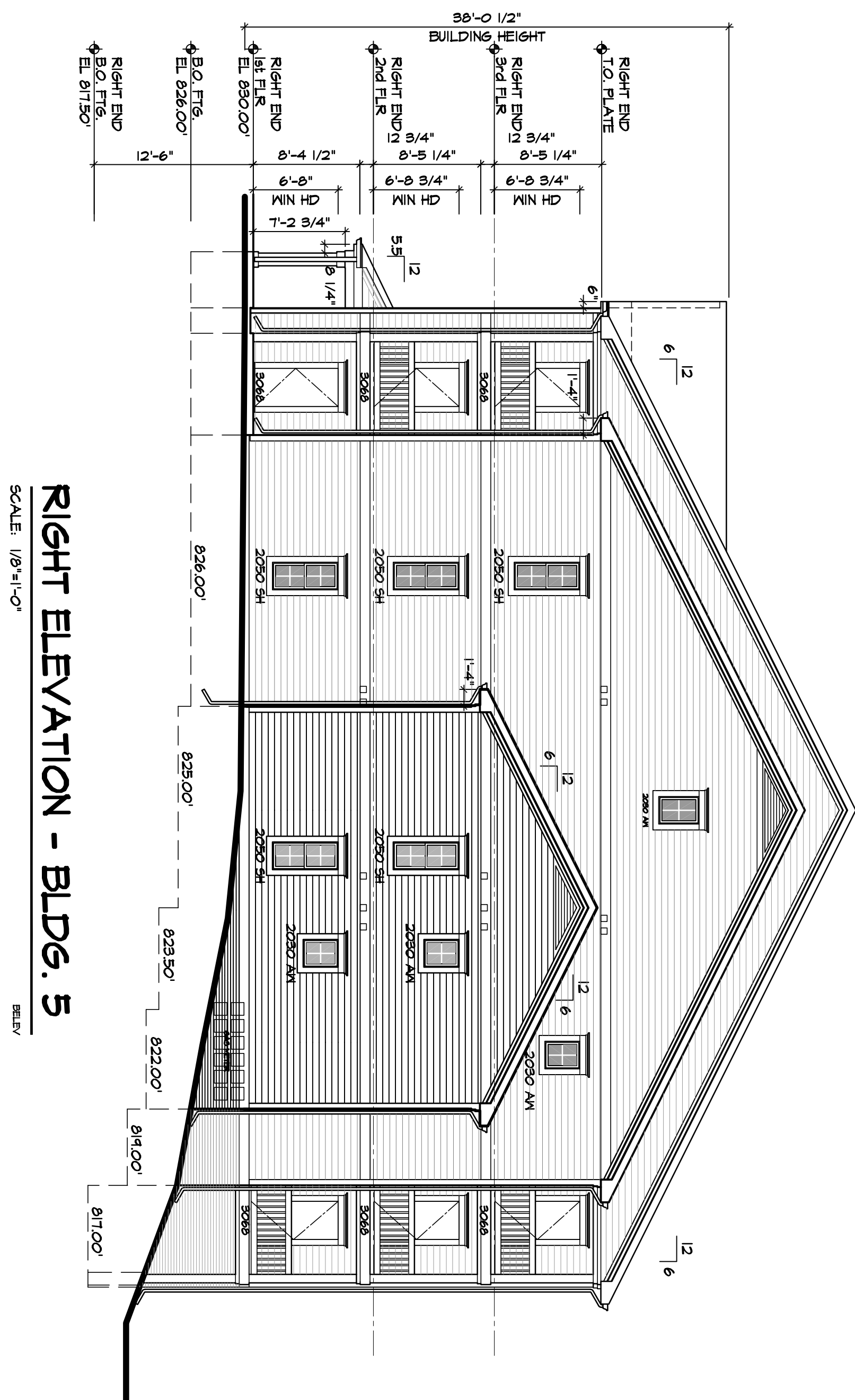
revisions  
 03.03.08 MSHDA Final  
 03.12.08 MSHDA Final/2

**J BRADLEY MOORE & ASSOCIATES**  
 4844 Jackson Road, #150 Ann Arbor, MI 48103 (734) 930-1500

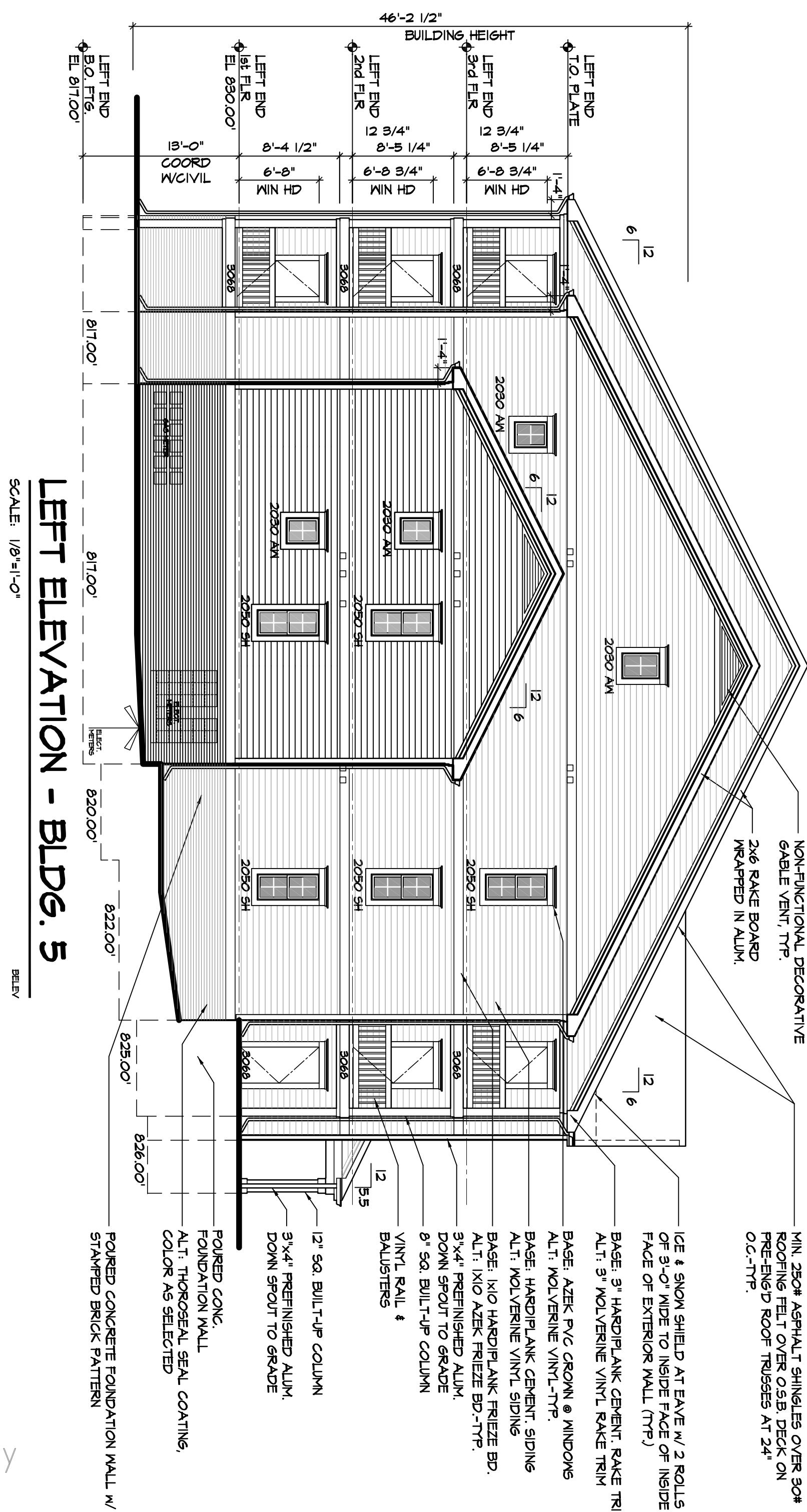
Burton Commons  
 MSHDA Project #3161  
 Front & Rear Elevations  
 Building 5

© Copyright 2007





**RIGHT ELEVATION - BLDG. 5**  
SCALE: 1/8"=1'-0"  
REV



**LEFT ELEVATION - BLDG. 5**  
SCALE: 1/8"=1'-0"  
REV

PRELIMINARY – Design Team Only  
Not for general Distribution  
100% Review – 03.12.08

drawn kwk/tjd  
date 01.22.08 MSHDA Review  
sht A2.8

job 26190

revisions  
03.03.08 MSHDA Final  
03.12.08 MSHDA Final2

**J BRADLEY MOORE & ASSOCIATES**  
4844 Jackson Road, #150 Ann Arbor, MI 48103 (734) 930-1500

Burton Commons  
MSHDA Project #3161  
Side Elevations  
Building 5

© Copyright 2007

