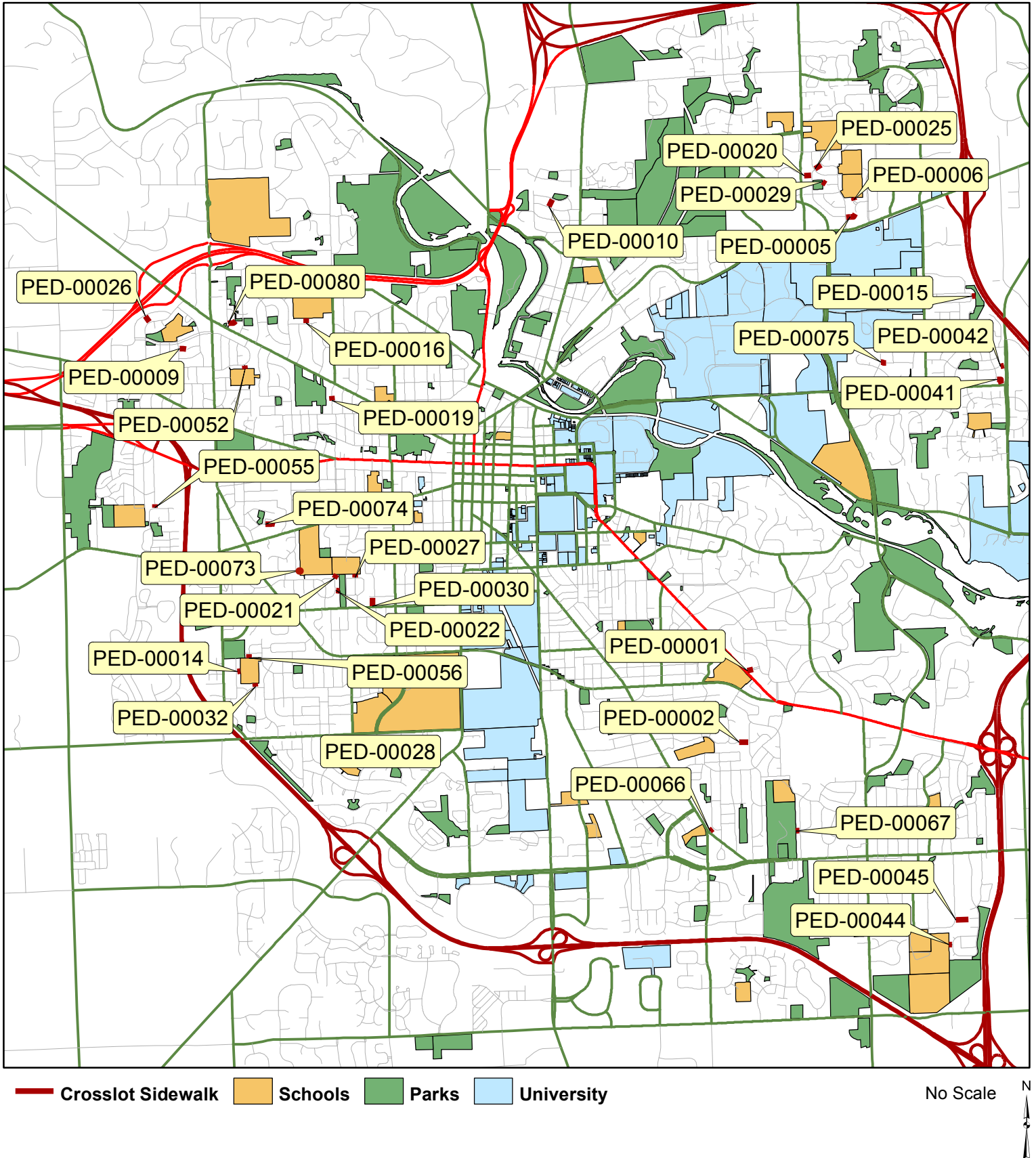


# Crosslot Sidewalks: Overview



Copyright 2013 City of Ann Arbor, Michigan

No part of this product shall be reproduced or transmitted in any form or by any means, electronic or mechanical, for any purposes, without prior written permission from the City of Ann Arbor.

This map complies with National Map Accuracy Standards for mapping at 1 inch = 100 feet. The City of Ann Arbor and its mapping contractors assume no legal responsibility for the content and/or inappropriate use of information represented on this map.

# Crosslot Sidewalks:PED-00001

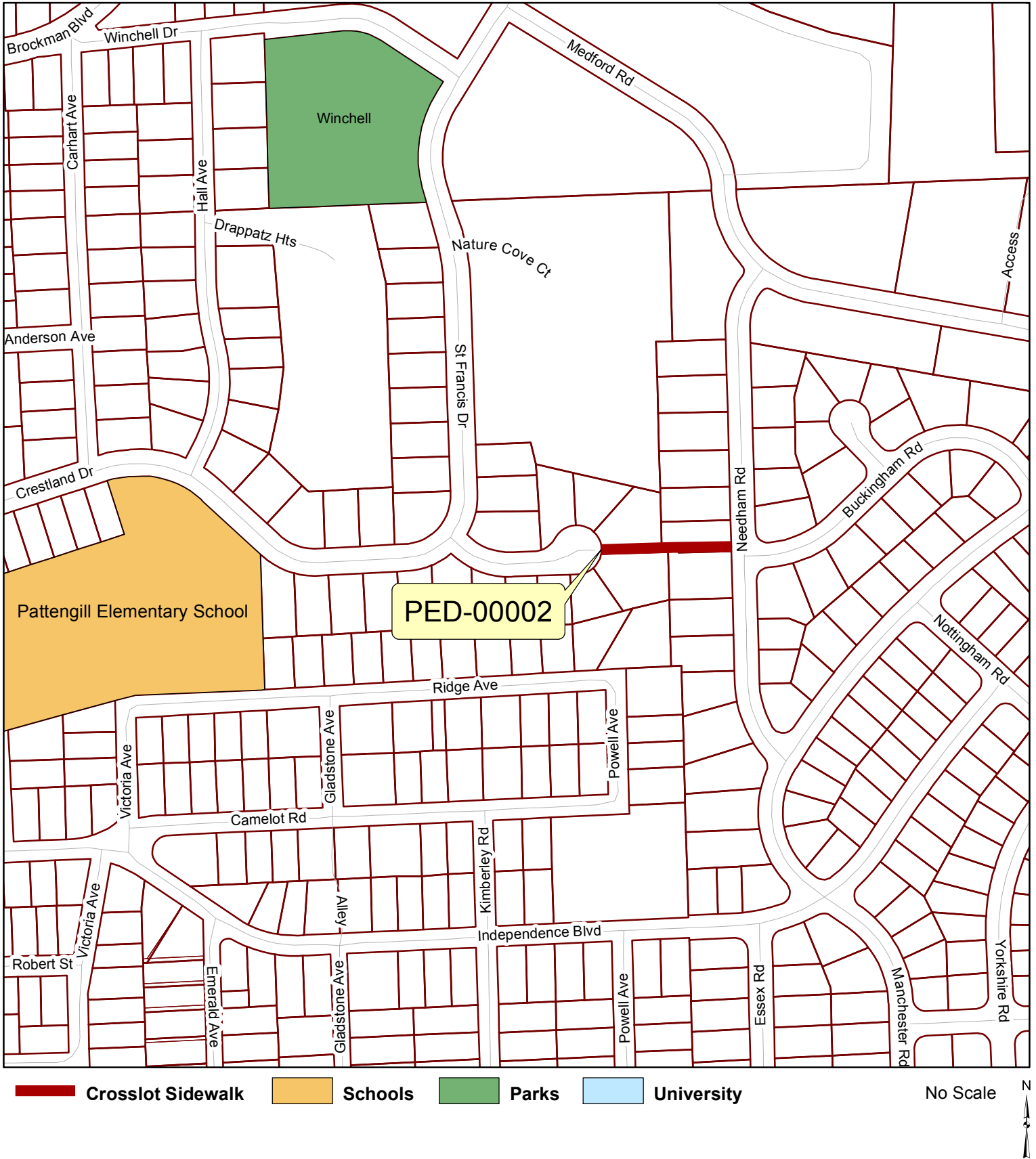


Copyright 2013 City of Ann Arbor, Michigan

No part of this product shall be reproduced or transmitted in any form or by any means, electronic or mechanical, for any purposes, without prior written permission from the City of Ann Arbor.

This map complies with National Map Accuracy Standards for mapping at 1 inch = 100 feet. The City of Ann Arbor and its mapping contractors assume no legal responsibility for the content and/or inappropriate use of information represented on this map.

# Crosslot Sidewalks:PED-00002



Copyright 2013 City of Ann Arbor, Michigan

No part of this product shall be reproduced or transmitted in any form or by any means, electronic or mechanical, for any purposes, without prior written permission from the City of Ann Arbor.

This map complies with National Map Accuracy Standards for mapping at 1 inch = 100 feet. The City of Ann Arbor and its mapping contractors assume no legal responsibility for the content and/or inappropriate use of information represented on this map.

# Crosslot Sidewalks: PED-00005, 0006, 0020, 0025, 0029

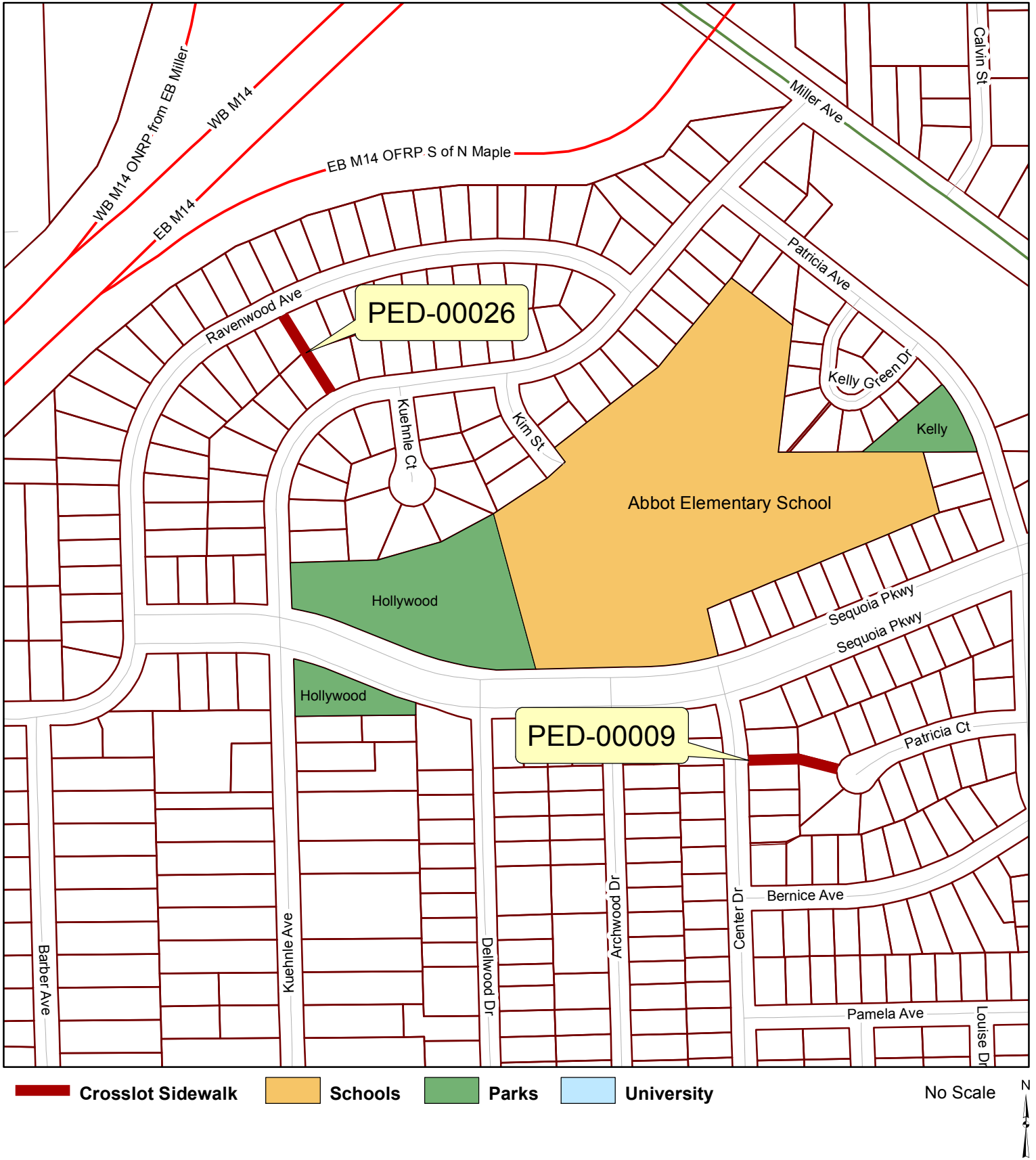


**Crosslot Sidewalk**   **Schools**   **Parks**   **University**

No Scale

Copyright 2013 City of Ann Arbor, Michigan  
 No part of this product shall be reproduced or transmitted in any form or by any means, electronic or mechanical, for any purposes, without prior written permission from the City of Ann Arbor.  
 This map complies with National Map Accuracy Standards for mapping at 1 inch = 100 feet. The City of Ann Arbor and its mapping contractors assume no legal responsibility for the content and/or inappropriate use of information represented on this map.

# Crosslot Sidewalks: PED-00009,00026



Copyright 2013 City of Ann Arbor, Michigan

No part of this product shall be reproduced or transmitted in any form or by any means, electronic or mechanical, for any purposes, without prior written permission from the City of Ann Arbor.

This map complies with National Map Accuracy Standards for mapping at 1 inch = 100 feet. The City of Ann Arbor and its mapping contractors assume no legal responsibility for the content and/or inappropriate use of information represented on this map.

# Crosslot Sidewalks: PED-00010

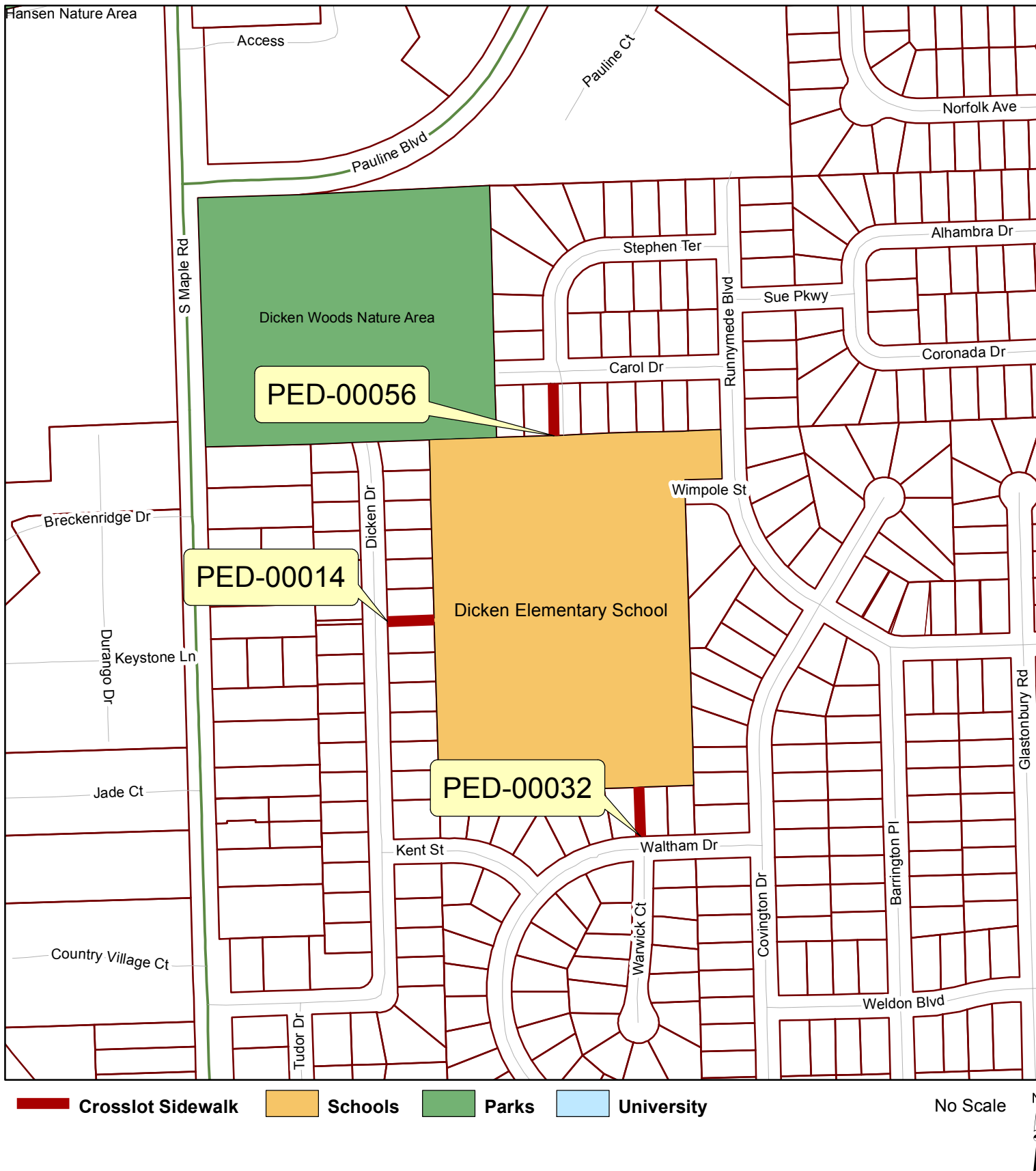


Copyright 2013 City of Ann Arbor, Michigan

No part of this product shall be reproduced or transmitted in any form or by any means, electronic or mechanical, for any purposes, without prior written permission from the City of Ann Arbor.

This map complies with National Map Accuracy Standards for mapping at 1 inch = 100 feet. The City of Ann Arbor and its mapping contractors assume no legal responsibility for the content and/or inappropriate use of information represented on this map.

# Crosslot Sidewalks: PED-00014, 00032, 00056

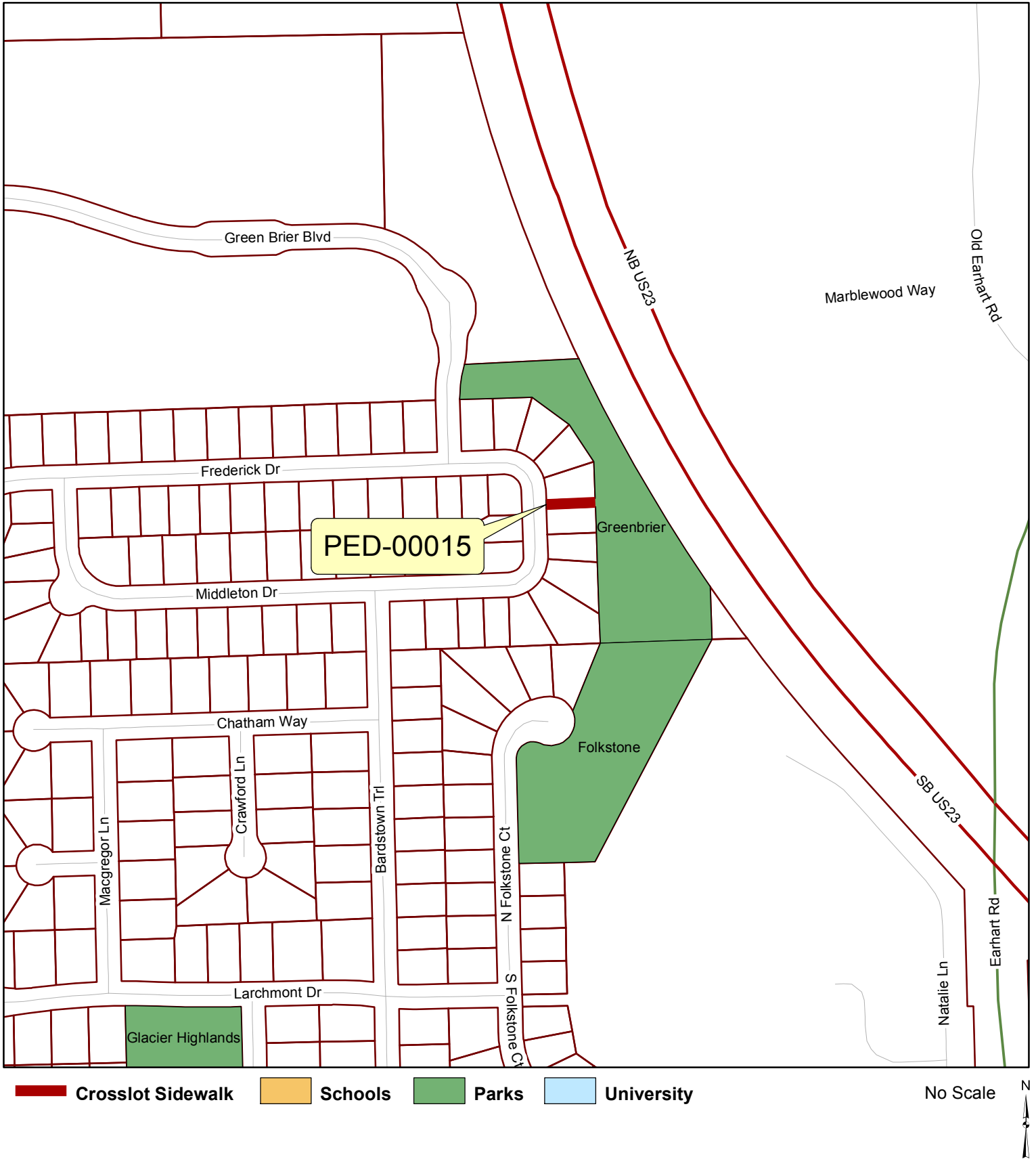


Copyright 2013 City of Ann Arbor, Michigan

No part of this product shall be reproduced or transmitted in any form or by any means, electronic or mechanical, for any purposes, without prior written permission from the City of Ann Arbor.

This map complies with National Map Accuracy Standards for mapping at 1 inch = 100 feet. The City of Ann Arbor and its mapping contractors assume no legal responsibility for the content and/or inappropriate use of information represented on this map.

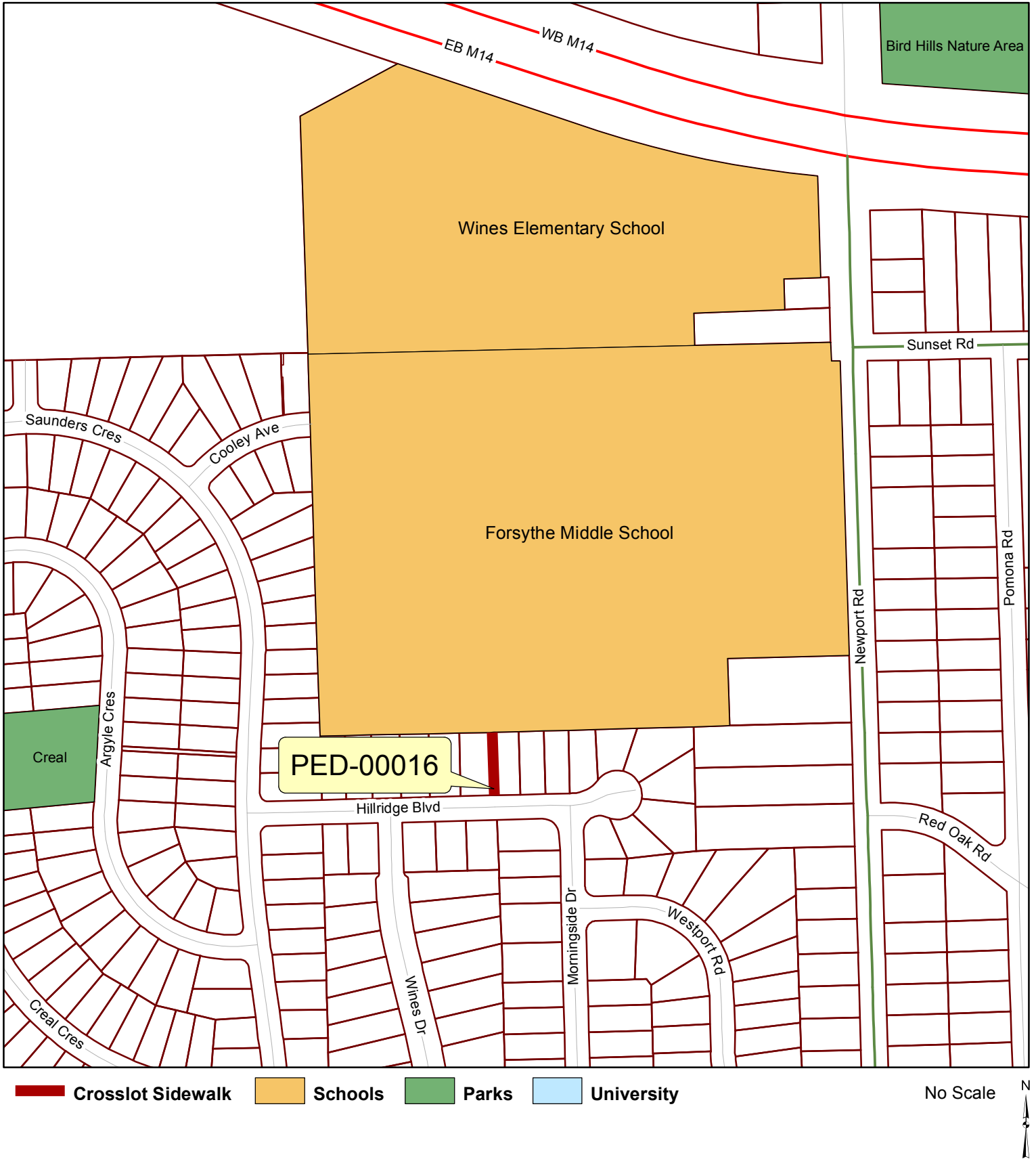
# Crosslot Sidewalks:PED-00015



Copyright 2013 City of Ann Arbor, Michigan  
No part of this product shall be reproduced or transmitted in any form or by any means, electronic or mechanical, for any purposes, without prior written permission from the City of Ann Arbor.  
This map complies with National Map Accuracy Standards for mapping at 1 inch = 100 feet. The City of Ann Arbor and its mapping contractors assume no legal responsibility for the content and/or inappropriate use of information represented on this map.



# Crosslot Sidewalks: PED-00016



Copyright 2013 City of Ann Arbor, Michigan

No part of this product shall be reproduced or transmitted in any form or by any means, electronic or mechanical, for any purposes, without prior written permission from the City of Ann Arbor.

This map complies with National Map Accuracy Standards for mapping at 1 inch = 100 feet. The City of Ann Arbor and its mapping contractors assume no legal responsibility for the content and/or inappropriate use of information represented on this map.

# Crosslot Sidewalks:PED-00019



Copyright 2013 City of Ann Arbor, Michigan

No part of this product shall be reproduced or transmitted in any form or by any means, electronic or mechanical, for any purposes, without prior written permission from the City of Ann Arbor.

This map complies with National Map Accuracy Standards for mapping at 1 inch = 100 feet. The City of Ann Arbor and its mapping contractors assume no legal responsibility for the content and/or inappropriate use of information represented on this map.

# Crosslot Sidewalks: PED-00021, 00022, 00027, 00030, 00073



Copyright 2013 City of Ann Arbor, Michigan

No part of this product shall be reproduced or transmitted in any form or by any means, electronic or mechanical, for any purposes, without prior written permission from the City of Ann Arbor.

This map complies with National Map Accuracy Standards for mapping at 1 inch = 100 feet. The City of Ann Arbor and its mapping contractors assume no legal responsibility for the content and/or inappropriate use of information represented on this map.

# Crosslot Sidewalks: PED-00028

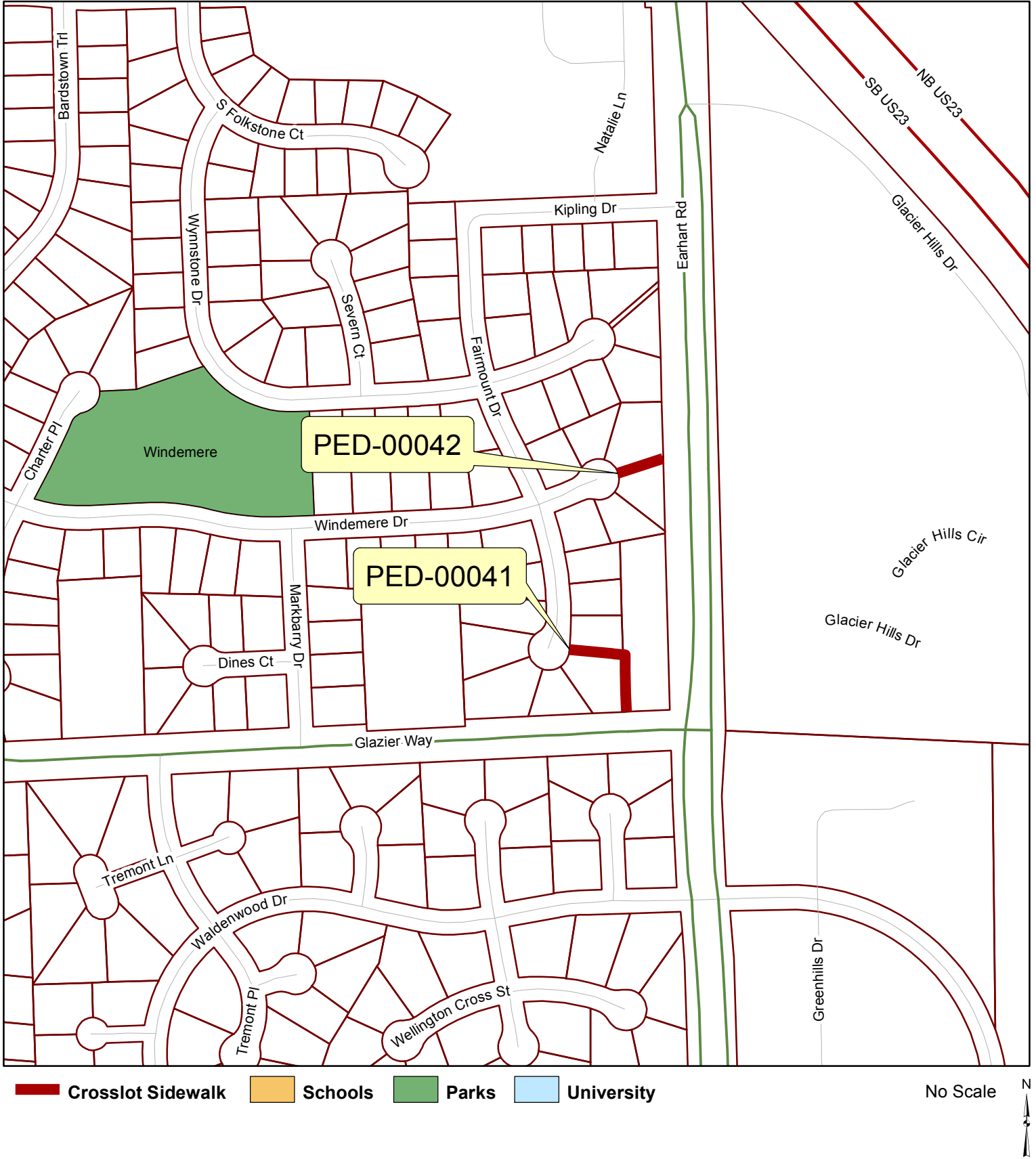


Copyright 2013 City of Ann Arbor, Michigan

No part of this product shall be reproduced or transmitted in any form or by any means, electronic or mechanical, for any purposes, without prior written permission from the City of Ann Arbor.

This map complies with National Map Accuracy Standards for mapping at 1 inch = 100 feet. The City of Ann Arbor and its mapping contractors assume no legal responsibility for the content and/or inappropriate use of information represented on this map.

# Crosslot Sidewalks: PED-00041, 00042



Copyright 2013 City of Ann Arbor, Michigan  
 No part of this product shall be reproduced or transmitted in any form or by any means, electronic or mechanical, for any purposes, without prior written permission from the City of Ann Arbor.  
 This map complies with National Map Accuracy Standards for mapping at 1 inch = 100 feet. The City of Ann Arbor and its mapping contractors assume no legal responsibility for the content and/or inappropriate use of information represented on this map.

# Crosslot Sidewalks: PED-00044, 00045



Copyright 2013 City of Ann Arbor, Michigan

No part of this product shall be reproduced or transmitted in any form or by any means, electronic or mechanical, for any purposes, without prior written permission from the City of Ann Arbor.

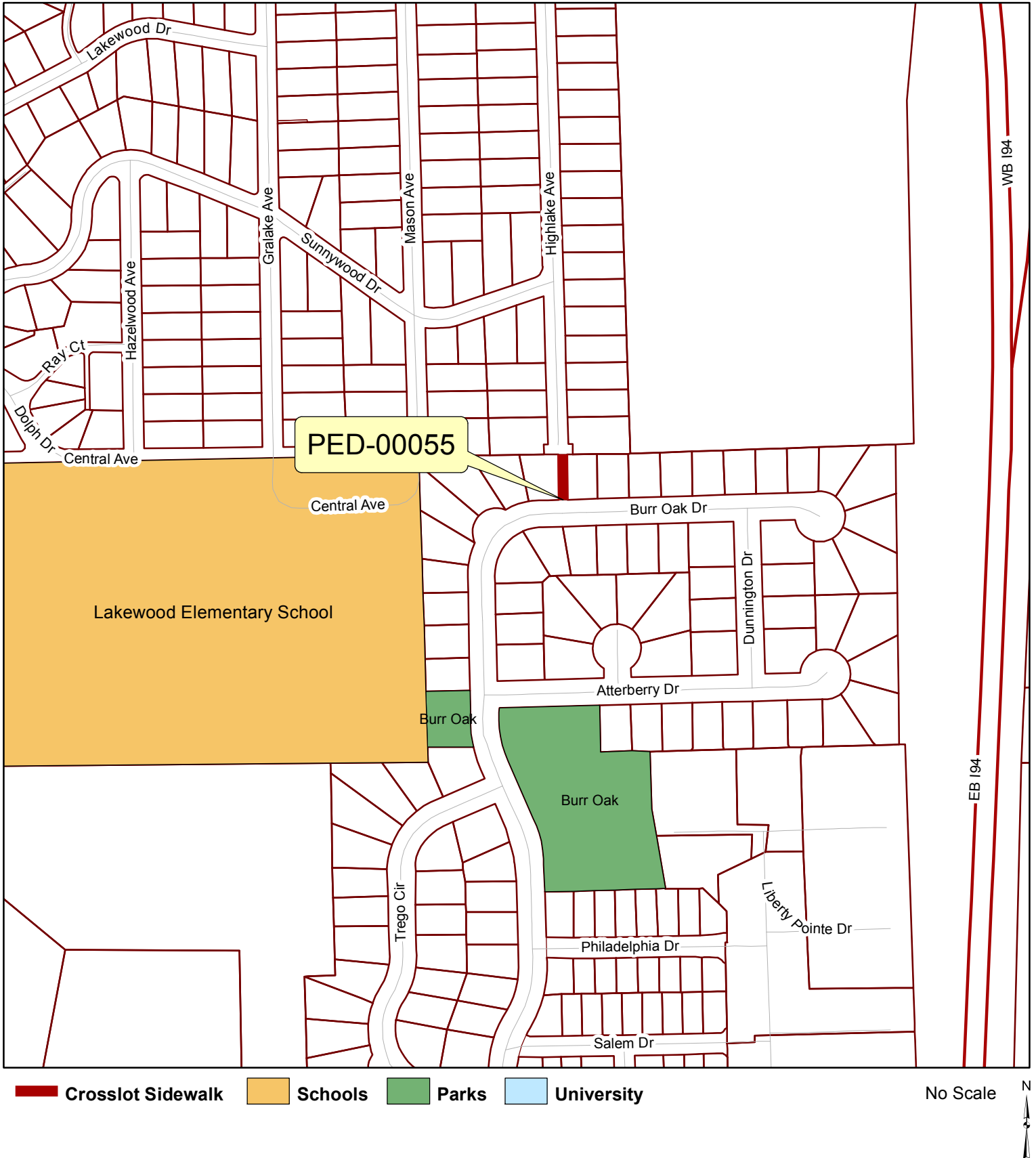
This map complies with National Map Accuracy Standards for mapping at 1 inch = 100 feet. The City of Ann Arbor and its mapping contractors assume no legal responsibility for the content and/or inappropriate use of information represented on this map.

# Crosslot Sidewalks: PED-00052, 00080



Copyright 2013 City of Ann Arbor, Michigan  
No part of this product shall be reproduced or transmitted in any form or by any means, electronic or mechanical, for any purposes, without prior written permission from the City of Ann Arbor.  
This map complies with National Map Accuracy Standards for mapping at 1 inch = 100 feet. The City of Ann Arbor and its mapping contractors assume no legal responsibility for the content and/or inappropriate use of information represented on this map.

# Crosslot Sidewalks:PED-00055



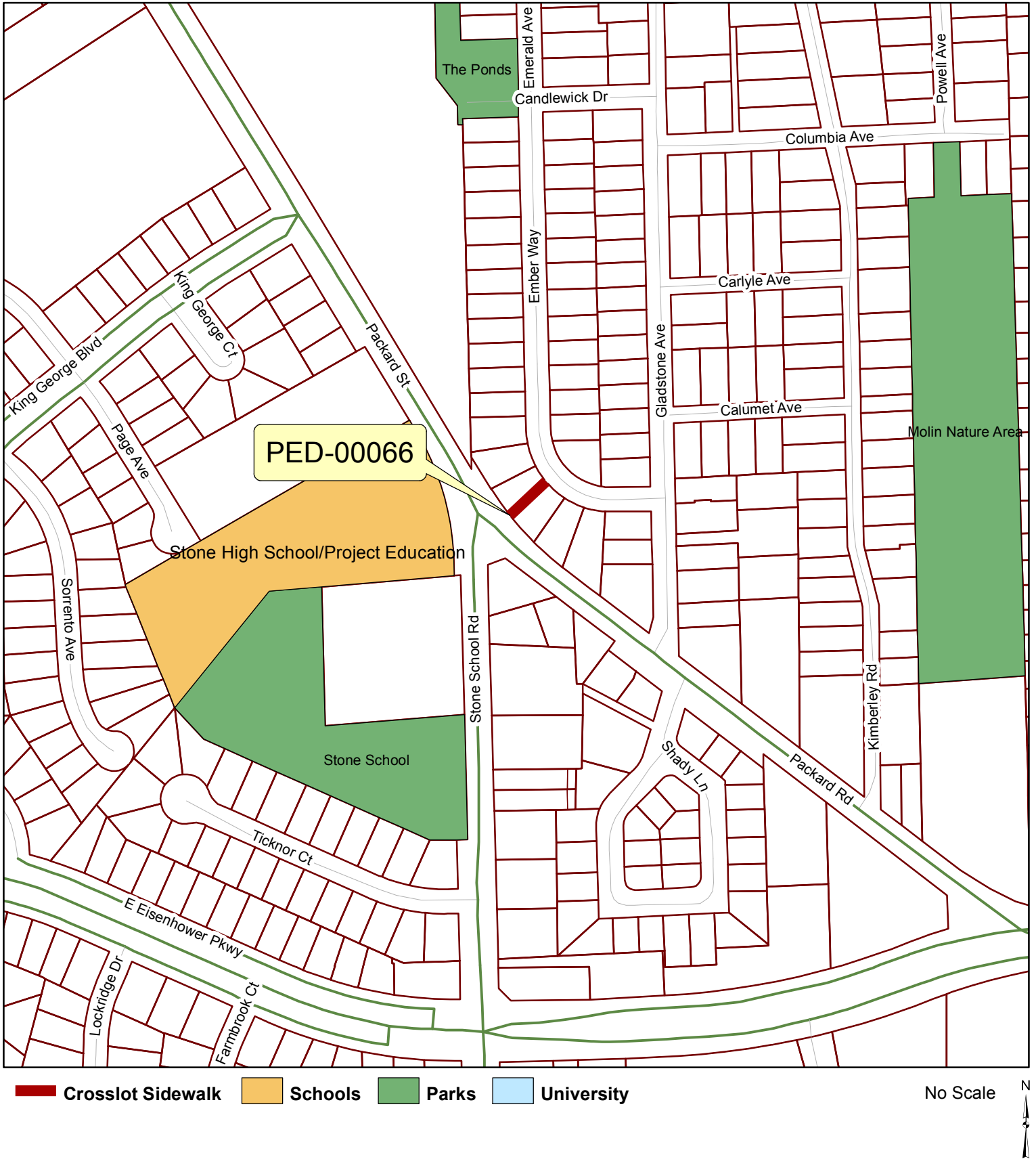
Copyright 2013 City of Ann Arbor, Michigan

No part of this product shall be reproduced or transmitted in any form or by any means, electronic or mechanical, for any purposes, without prior written permission from the City of Ann Arbor.

This map complies with National Map Accuracy Standards for mapping at 1 inch = 100 feet. The City of Ann Arbor and its mapping contractors assume no legal responsibility for the content and/or inappropriate use of information represented on this map.



# Crosslot Sidewalks:PED-00066



Copyright 2013 City of Ann Arbor, Michigan

No part of this product shall be reproduced or transmitted in any form or by any means, electronic or mechanical, for any purposes, without prior written permission from the City of Ann Arbor.

This map complies with National Map Accuracy Standards for mapping at 1 inch = 100 feet. The City of Ann Arbor and its mapping contractors assume no legal responsibility for the content and/or inappropriate use of information represented on this map.

# Crosslot Sidewalks:PED-00067



Copyright 2013 City of Ann Arbor, Michigan

No part of this product shall be reproduced or transmitted in any form or by any means, electronic or mechanical, for any purposes, without prior written permission from the City of Ann Arbor.

This map complies with National Map Accuracy Standards for mapping at 1 inch = 100 feet. The City of Ann Arbor and its mapping contractors assume no legal responsibility for the content and/or inappropriate use of information represented on this map.

# Crosslot Sidewalks: PED-00074



Copyright 2013 City of Ann Arbor, Michigan

No part of this product shall be reproduced or transmitted in any form or by any means, electronic or mechanical, for any purposes, without prior written permission from the City of Ann Arbor.

This map complies with National Map Accuracy Standards for mapping at 1 inch = 100 feet. The City of Ann Arbor and its mapping contractors assume no legal responsibility for the content and/or inappropriate use of information represented on this map.

# Crosslot Sidewalks:PED-00075



Copyright 2013 City of Ann Arbor, Michigan  
No part of this product shall be reproduced or transmitted in any form or by any means, electronic or mechanical, for any purposes, without prior written permission from the City of Ann Arbor.  
This map complies with National Map Accuracy Standards for mapping at 1 inch = 100 feet. The City of Ann Arbor and its mapping contractors assume no legal responsibility for the content and/or inappropriate use of information represented on this map.