

ELEV. 837.83' (NAVD88)

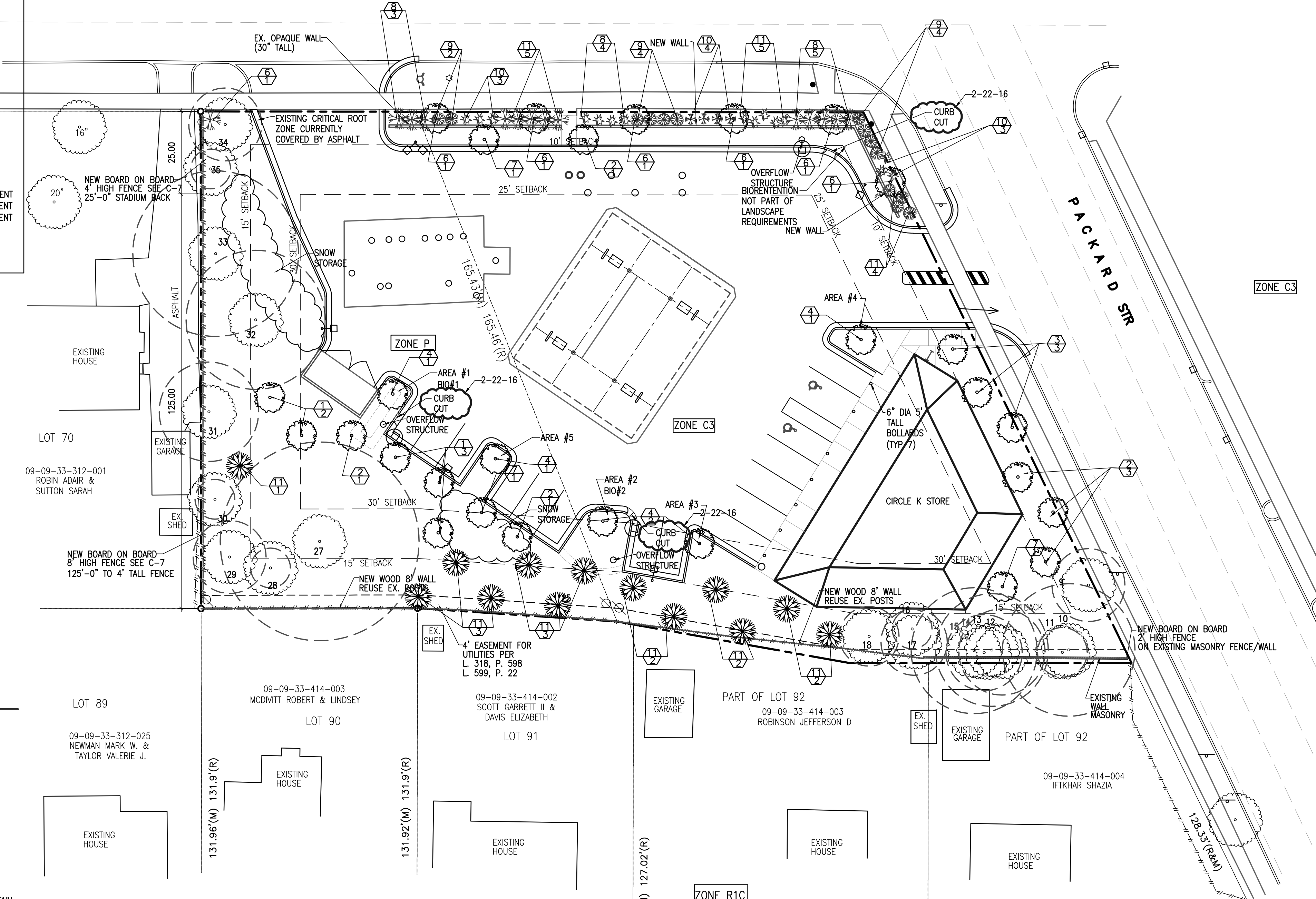
2-22-16

1	5	RED OAK	QUERCUS RUBRA	3" CAL	B&B
2	7	BUR OAK	QUERCUS MACROCARPA	3" CAL	B&B
3	3	HONEY LOCUST	GLEDITSIA TRIACANTHOS	2" CAL	B&B
4	5	BLACK GUM	NYSSA SYLVATICA	2" CAL	B&B
5	13	EASTERN WHITE PINE	PINUS STROBUS	7' TALL	B&B
6	6	HONEY LOCUST	GLEDITSIA TRIACANTHOS	2" CAL	B&B
7	3	HONEY LOCUST	GLEDITSIA TRIACANTHOS	3" CAL	B&B
8	12	GRO-LOW FRAGRANT SUMAC	RHUS AROMATICA "GRO-LOW"	3 GAL	B&B
9	10	GOLDFLAME SPIREA	SPIRARA BUMALDA 'GOLDFLAME'	3 GAL	POT
10	10	DWARF DUETZIA	DEUTZIA GRACILIS	3 GAL	POT
11	14	TOM THUMB COTONEASTER	COTONEASTER APICULATUS "TOM THUMB"	3 GAL	POT
EX.	18	EXISTING TREES TO REMAIN	MITIGATED 2 OF THE 18 IN CASE THEY DON'T MAKE IT THROUGH		

LANDMARK MITIGATION TREES:
 (5) #1 - 3" RED OAK
 (6) #2 - 3" BUR OAK
 (3) #3 - 2" HONEY LOCUST
 (3) #7 - 3" HONEY LOCUST

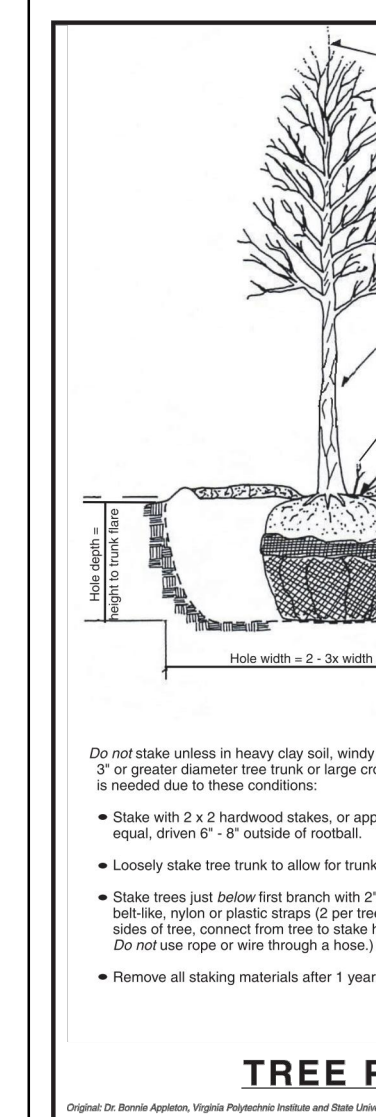
** (1) ADDITIONAL CONIFER CONIFER FOR CLUB REPLACEMENT
 (4) DEC (3 FOR LANDMARK TREE MIT, (1) FOR CLUB REPLACEMENT

STADIUM BLVD



TREE CHART		LM	D
1-	SHADE MASTER HONEYLOCUST 10" CAL	N	1
2-	SHADE MASTER HONEYLOCUST 10" CAL	N	8
3-	SHADE MASTER HONEYLOCUST 10" CAL	N	9
4-	SHADE MASTER HONEYLOCUST 10" CAL	N	8
5-	SHADE MASTER HONEYLOCUST 10" CAL	N	1
6-	SHADE MASTER HONEYLOCUST 10" CAL	N	8
7-	SHADE MASTER HONEYLOCUST 10" CAL	N	9
8-	SHADE MASTER HONEYLOCUST 10" CAL	N	1
9-	SHADE MASTER HONEYLOCUST 12" CAL	N	1
10-	CHINESE ELM 12" CAL	Y	2
11-	CHINESE ELM 10" CAL	N	7
12-	CHINESE ELM 16" CAL	N	1
13-	AMERICAN ELM 12" CAL	N	1
14-	AMERICAN ELM 8" CAL	N	1
15-	CHINESE ELM 16" CAL	Y	1
16-	NORWAY MAPLE 6" CAL	N	6
17-	AMERICAN ELM 8" CAL	N	1
18-	AMERICAN ELM 16" CAL	N	9
19-	CLUMP MULBERRY - 4"-8" CAL	N	8
20-	SCOTCH PINE 20" CAL	Y	1
21-	SCOTCH RED PINE 20" CAL	N	1
22-	SCOTCH RED PINE 12" CAL	N	1
23-	BUCKTHORN 6" CAL	N	6
24-	CHINESE ELM 70" CAL	Y	3
25-	HONEY SUCKLE SHRUB	N	9
26-	CHINESE ELM 40" CAL	Y	2
27-	CHINESE ELM 60" CAL	Y	3
28-	BOX ELDER 2-6" CAL	N	2
29-	MULBERRY 26" CAL	N	1
30-	NORWAY MAPLE 6" CAL	N	6
31-	POPLAR 18" CAL	N	1
32-	CHINESE ELM 24" CAL	Y	2
33-	CHINESE ELM 26" CAL	Y	2
34-	SHADE MASTER HONEYLOCUST 14" CAL	N	1
35-	SHADE MASTER HONEYLOCUST 6" CAL	N	3

*CHART UPDATED PER ARBORIST VISIT TO SITE 9-28-1
 NOTES:
 1. NO TREE PROPOSED TO REPLACE INVASIVE TREES.
 LM=LANDMARK TREE
 2. ROOT PROTECTION FENCE SEE L-3



SHREDDED BARRI