
2800 JACKSON AVENUE DEVELOPMENT
ANN ARBOR, MICHIGAN

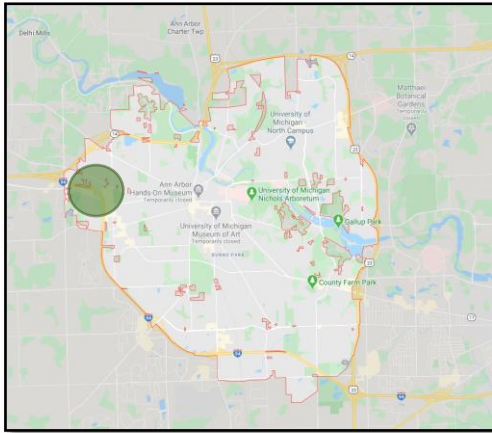
MAY 5, 2020

PRESENTED BY:

BOWERS+ASSOCIATES
ARCHITECTURE DESIGN



The Namou Hotel Group



LOCATION MAP
NOT TO SCALE

I-94 ENTRANCE RAMP (VARIABLE WIDTH) MDOOT ROW



JACKSON AVENUE (99' WIDE) MDOOT ROW

JACKSON AVENUE
(99' WIDE)
MDOOT ROW

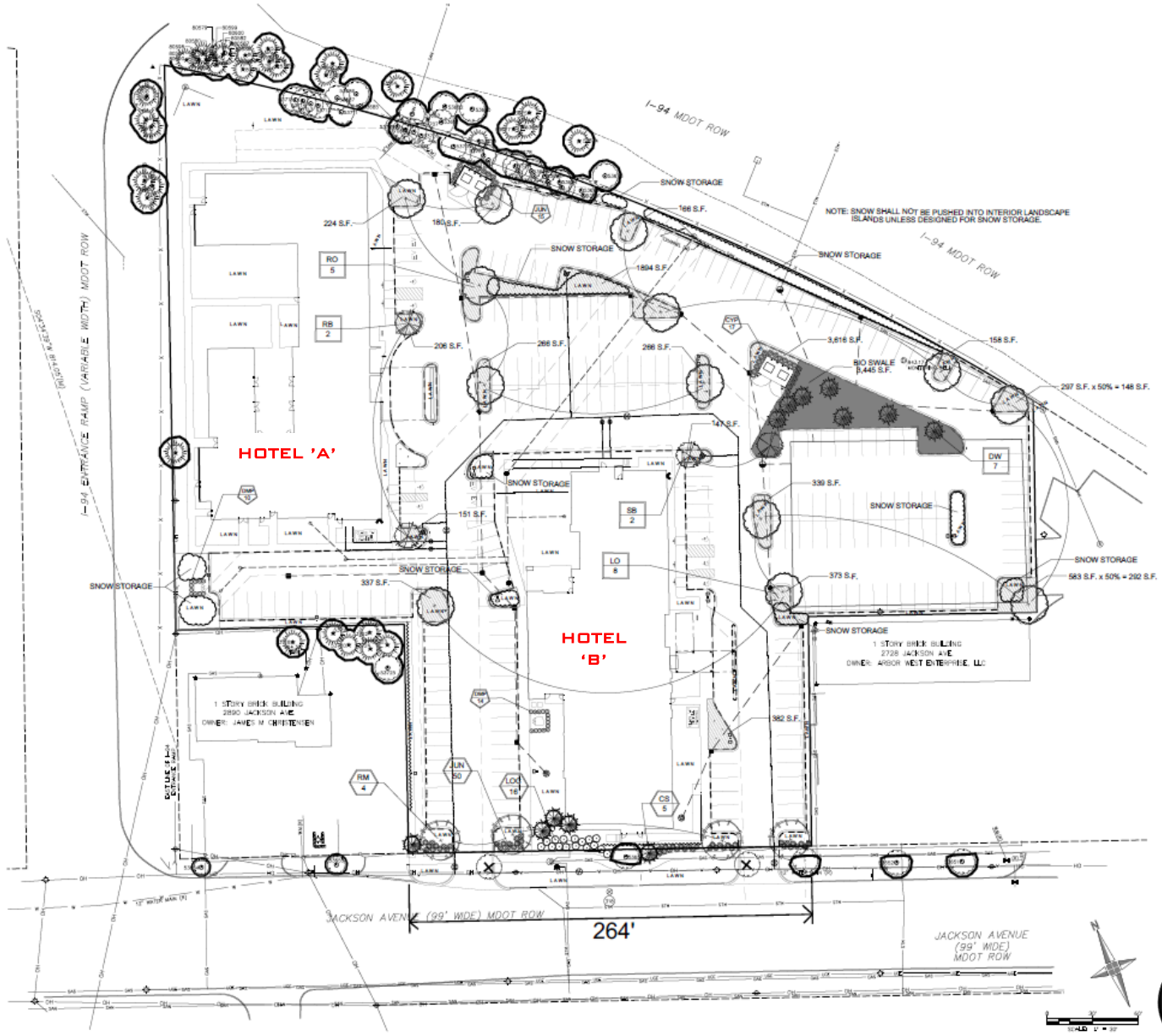


The Namou Hotel Group

BOWERS+ASSOCIATES
ARCHITECTURE DESIGN

SITE PLAN

2800 JACKSON AVENUE DEVELOPMENT



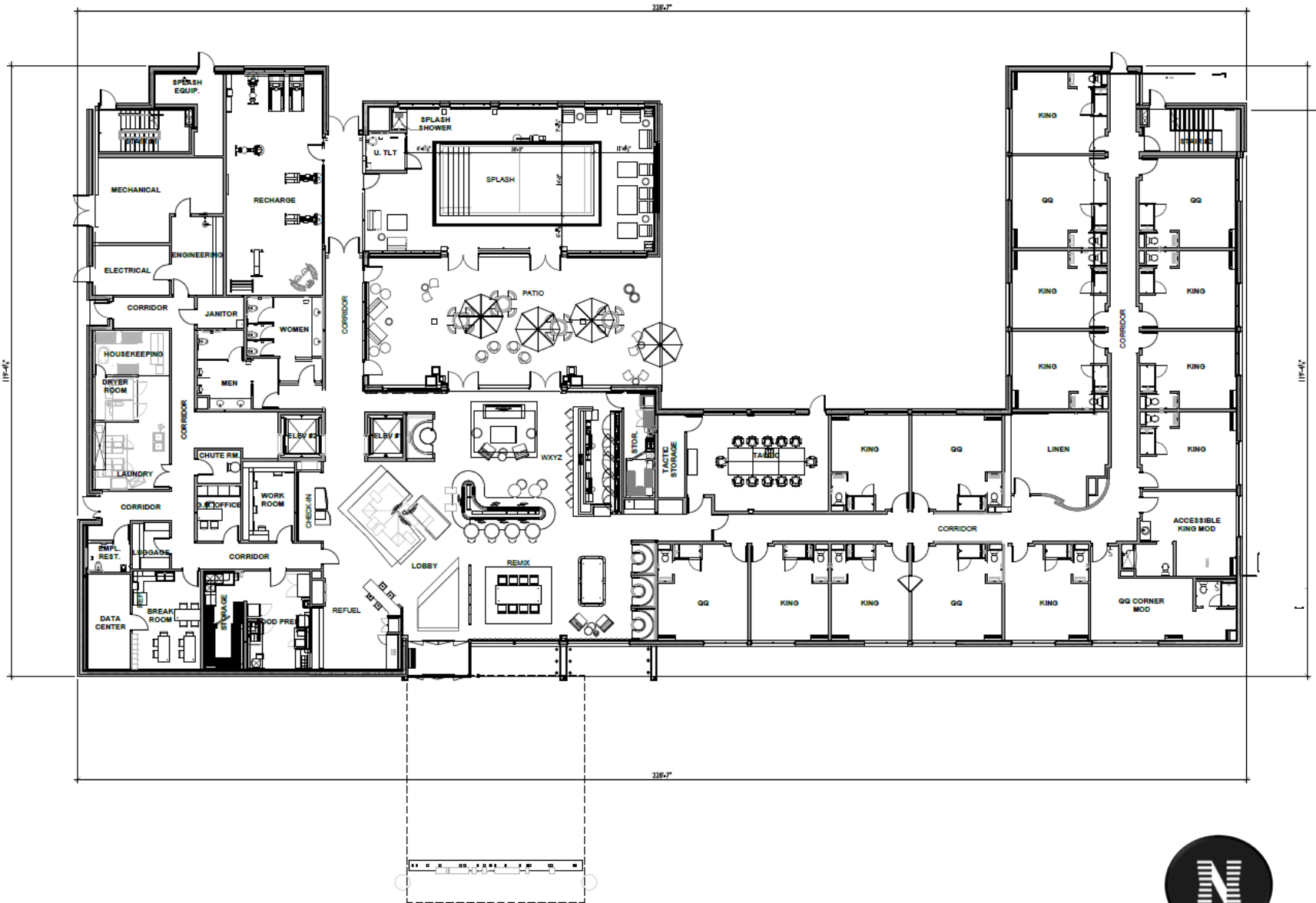
LANDSCAPE PLAN

2800 JACKSON AVENUE DEVELOPMENT



The Namou Hotel Group

BOWERS+ASSOCIATES
ARCHITECTURE DESIGN



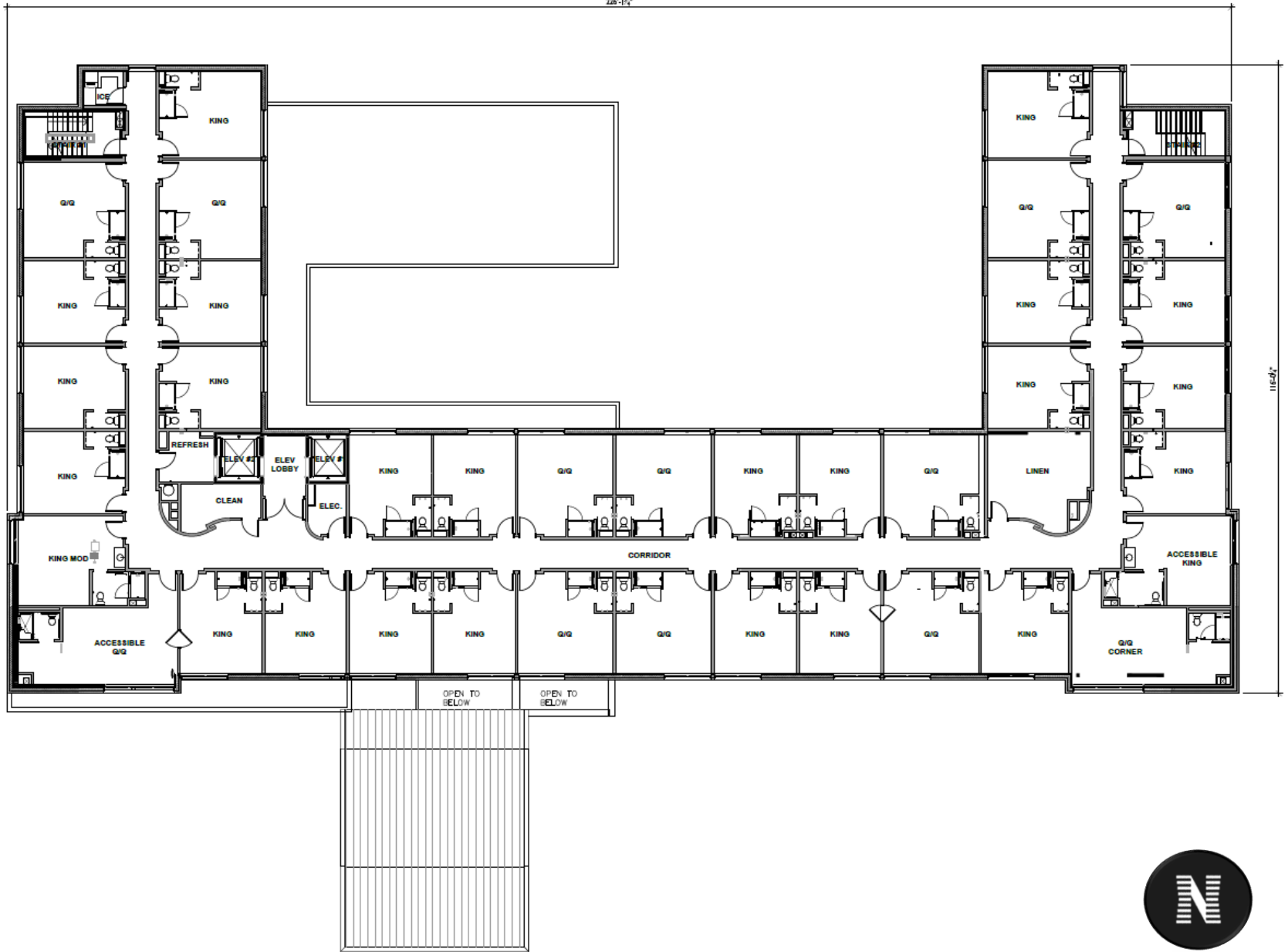
FIRST LEVEL FLOOR PLAN-HOTEL 'A'

2800 JACKSON AVENUE DEVELOPMENT



The Namou Hotel Group

BOWERS+ASSOCIATES
ARCHITECTURE DESIGN



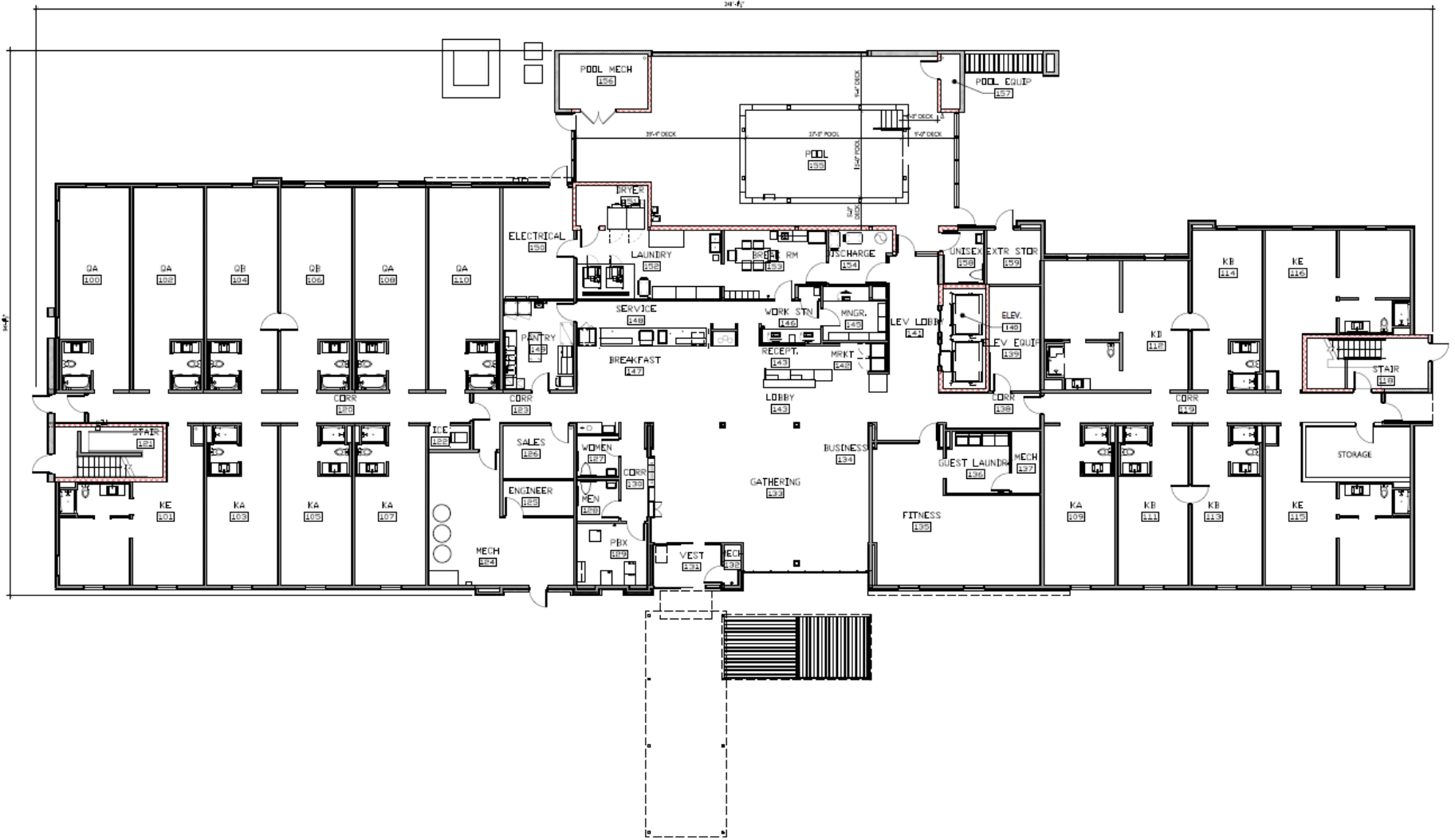
TYP. UPPER LEVEL FLOOR PLAN-HOTEL 'A'

2800 JACKSON AVENUE DEVELOPMENT



The Namou Hotel Group

BOWERS+ASSOCIATES
ARCHITECTURE DESIGN



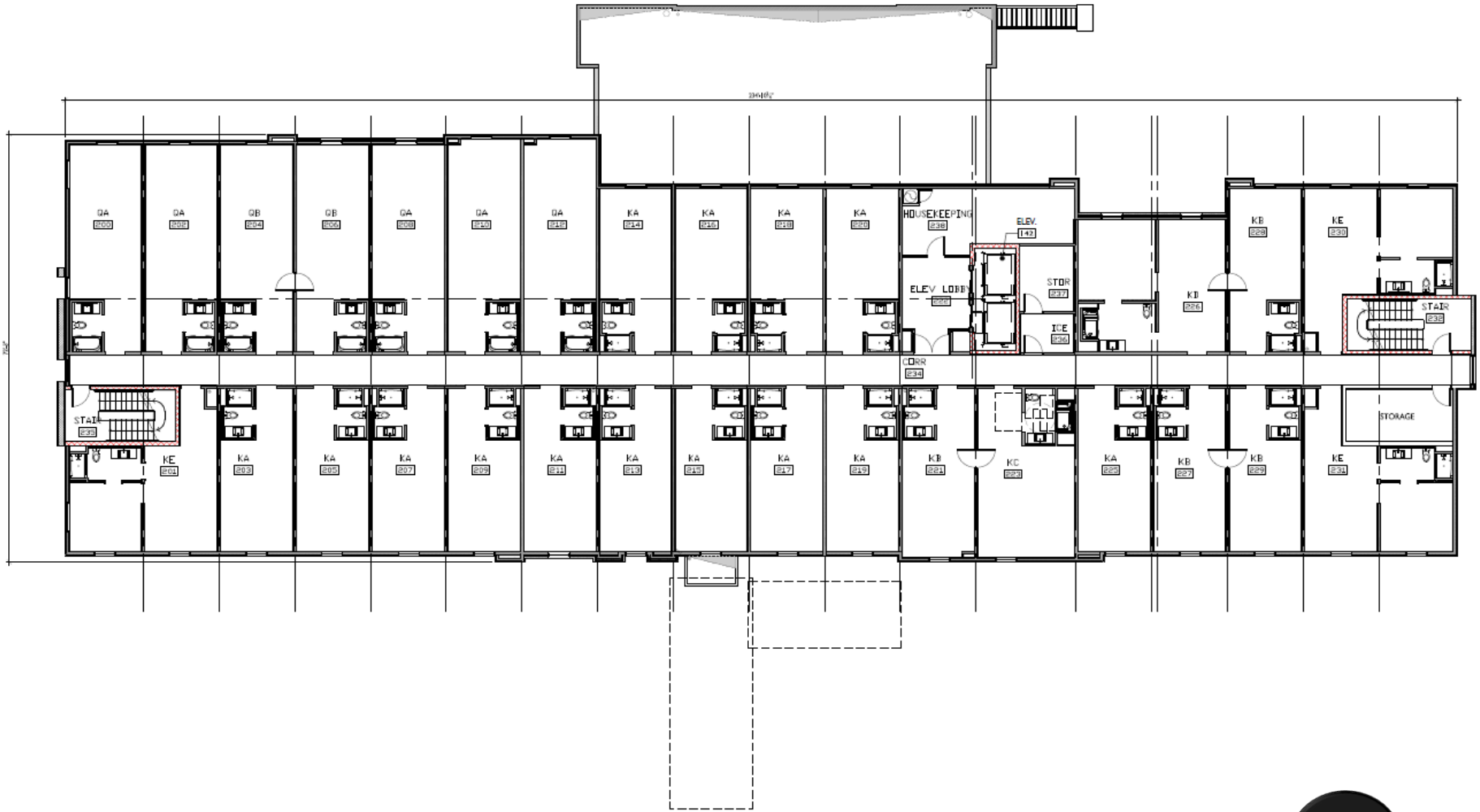
FIRST LEVEL FLOOR PLAN-HOTEL 'B'

2800 JACKSON AVENUE DEVELOPMENT



The Namou Hotel Group

BOWERS+ASSOCIATES
ARCHITECTURE DESIGN



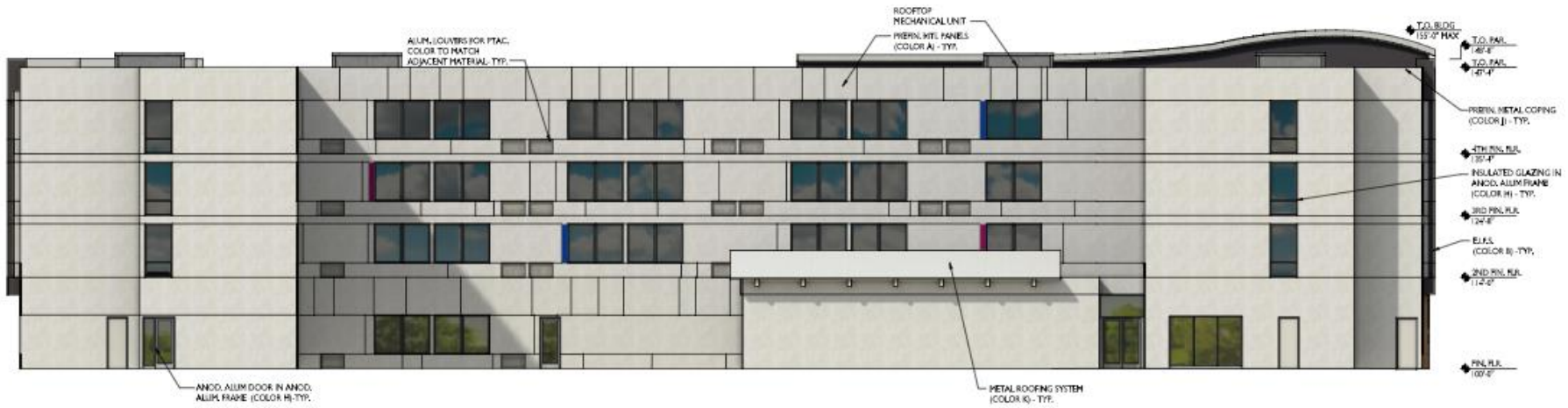
TYP. UPPER LEVEL FLOOR PLAN-HOTEL 'B'

2800 JACKSON AVENUE DEVELOPMENT



The Namou Hotel Group

BOWERS+ASSOCIATES
ARCHITECTURE DESIGN



WEST ELEVATION
NOT TO SCALE

EXTERIOR FINISH LEGEND			
CALL MATERIAL	FINISH/NOTES	COLOR	
A	METAL PANELS	ATAS	BOKE WHITE
B	SLIPS	DRYPT	DARK GRAY LACOF 66-2343
C	SLIPS	DRYPT	BLUF LACOF 31-1385
D	SLIPS	DRYPT	PINK LACOF 31-1385
E	WOOD-LOOK PANELS	MOHAW VINTAGE WOOD	CEDAR
F	PORTE-COCHERE TRIM	PROFORM ILLUMINATIONS	SCHEIN EDT GRAY
G	PORTE-COCHERE CEILING	LUNALDO	PANTONE MATCHLESS SYSTEM
H	FRAM. FRAME	ATAS F RAC CLAD	CLAR ANODIZED
I	METAL COPING	ATAS F RAC CLAD	MATCH ADJACENT METL.
K	METAL ROOF	ATAS	BOKE WHITE
L	METAL LOUVERS	ATAS F RAC CLAD	MATCH ADJACENT METL.



EAST ELEVATION
NOT TO SCALE

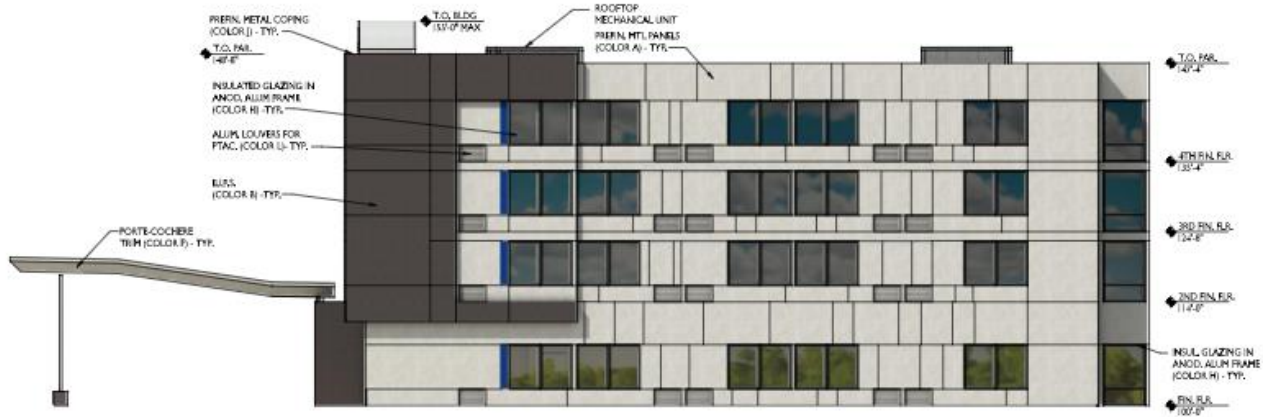


The Namou Hotel Group

BOWERS+ASSOCIATES
ARCHITECTURE DESIGN

EXTERIOR ELEVATIONS-HOTEL 'A'

2800 JACKSON AVENUE DEVELOPMENT



NORTH ELEVATION
NOT TO SCALE

EXTERIOR FINISH LEGEND:		
TAG	NOTATION	COLOR
A	METAL PANELS	JATAL
B	GLSS	DRYWT
C	GLSS	DRYWT
D	GLSS	DRYWT
E	WOOD-LOOK PANELS	WCMBA-WHITACEWOOD
F	PORTE-COCHERE TRIM	WCMBA-ILLUMINATION
G	PORTE-COCHERE CEILING	WCMBA
H	ALUM. FRAME	JATAL/FAC-CLAD
I	METAL COPING	JATAL/FAC-CLAD
J	METAL COPING	JATAL
K	METAL ROOFING SYSTEM	JATAL/FAC-CLAD
L	METAL LOUVERS	JATAL/FAC-CLAD



SOUTH ELEVATION
NOT TO SCALE



The Namou Hotel Group

BOWERS+ASSOCIATES
ARCHITECTURE DESIGN

EXTERIOR ELEVATIONS-HOTEL 'A'

2800 JACKSON AVENUE DEVELOPMENT



EAST ELEVATION
NOT TO SCALE

EXTERIOR FINISH LEGEND		
FAC	MATERIAL	FINISH/TYP.
A	BRICK	BURNED
B	BRICK	GLAZED
C	STONE	BUCKLECAST MASONRY VENEER
D	STONE	BUCKLECAST ACCENT BAND
E	STEPS	MATCHSTONE / RUBENETT
F	METAL PANEL	ALUM. ANODIZED
G	METAL FRM.	ALUM. ANODIZED
H	ALUM. FRAME	ALUM. ANODIZED
I	METAL COPING	MATCH ASHMENT PANEL
J	BRICK	BRICKWORK VENEER
K	BRICK	GLAZED



WEST ELEVATION
NOT TO SCALE

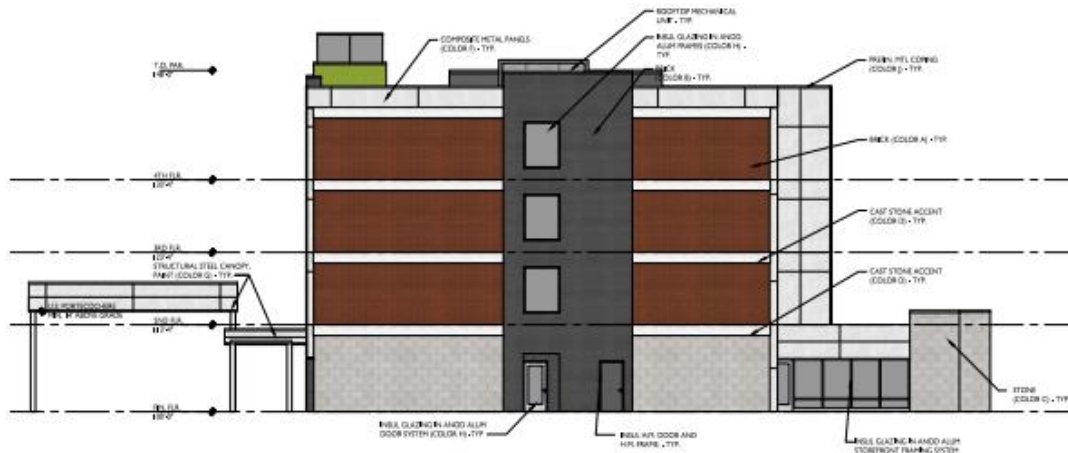


The Namou Hotel Group

BOWERS+ASSOCIATES
ARCHITECTURE DESIGN

EXTERIOR ELEVATIONS-HOTEL 'B'

2800 JACKSON AVENUE DEVELOPMENT



NORTH ELEVATION
NOT TO SCALE

EXTERIOR FINISH LEGEND

TAD	MATERIAL	MANUFACTURE	COLOR
A	BRICK	HELDEN	BRANDYWINE
B	BRICK	GULF GRIT	CHARC GRIT
C	STONE	ROCK CAST MASCOBY VENEER	BURRSTONE SMOOTH 1.2" X 2"
D	STONE	ROCK CAST ACCENT BAND	CRYSTAL WHITE
E	ST.P.S		SWATCH SWATCH PAMARBIT
F	METAL PANEL	ATAS / FAC CLAD	CLEAR ANODIZED
G	METAL FRAME	ATAS / FAC CLAD	CLEAR ANODIZED
H	ALUM. FRAME	ATAS / FAC CLAD	CLEAR ANODIZED
J	METAL CORNING	ATAS / FAC CLAD	SWATCH ADAMANT MATL
K	PAINT	SHERWIN WILLIAMS	DWIND: CRY LOFT



SOUTH ELEVATION
NOT TO SCALE



The Namou Hotel Group

BOWERS+ASSOCIATES
ARCHITECTURE DESIGN

EXTERIOR ELEVATIONS-HOTEL 'B'

2800 JACKSON AVENUE DEVELOPMENT

'A,K'

'H'



'G'

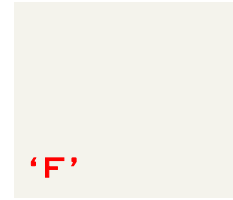


WOOD-LOOK WALL PANELS (COLOR E) - TYP.
 WOOD-LOOK PORTE-COCHERE TRIM (COLOR F) - TYP.
 WOOD-LOOK PORTE-COCHERE CEILING (COLOR G) - TYP.
 WOOD-LOOK PORTE-COCHERE TRIM (COLOR H) - TYP.

EXTERIOR FINISH LEGEND

TAG	MATERIAL	MANUF/STYLE	COLOR
A	METAL PANELS	ATAS	BONE WHITE
B	E.I.F.S.	DRYVIT	DARK GRAY ALOF-06-2745S
C	E.I.F.S.	DRYVIT	BLUE ALOF-05-1085S
D	E.I.F.S.	DRYVIT	PINK ALOF-07-1085S
E	WOOD-LOOK PANELS	NICHIHA VINTAGEWOOD	CEDAR
F	PORTE-COCHERE TRIM	NICHIHA ILLUMINATIONS	S-04690 BGT GREY
G	PORTE-COCHERE CEILING	LUXALON	PANTONE MATCHING SYSTEM
H	ALUM. FRAME	ATAS / PAC-CLAD	CLEAR ANODIZED
J	METAL COPING	ATAS / PAC-CLAD	MATCH ADJACENT MATL
K	METAL ROOF	ATAS	BONE WHITE
L	METAL LOUVERS	ATAS / PAC-CLAD	MATCH ADJACENT MATL

Aluminum Composite Panel (Alternate)
 N/A
 Roof Trim at Porte Cochere
 Nichiha
 Illuminations Series
 18"H x 6'L (Nominal)
 S-04690 BGY Grey
 074000 - Siding Panels*



Front Entry / Pool Entry wood wall panel
 Nichiha
 VintageWood
 Panels 18"H x 10'L
 Cedar (EF762)
 074000 - Siding Panels*



LEED Certified

Exterior Insulation Finishing System
 Dryvit Systems, Inc.
 Outsulation Plus MD System
 1 - 1/2" minimum insulation thickness
 ALOF-07-1085S – Pink w/StratoTone high performance colorant over ALOF-01-2745 – White
 Demandit Smooth Paint Coating



Exterior Insulation Finishing System
 Dryvit Systems, Inc.
 Outsulation Plus MD System
 1-1/2" minimum insulation thickness
 ALOF-05-1085S - Blue w/StratoTone high performance colorant over ALOF-01-2745 - White
 Demandit Smooth Paint Coating



Exterior Insulation Finishing System
 Dryvit Systems, Inc.
 Outsulation Plus MD System (Alternate)
 1-1/2" minimum insulation thickness
 ALOF-06-1087 over ALOF-06-2745S - Dark Gray w/StratoTone high performance colorant
 Reflectit Metallic Finish Coating over Limestone HDP (Hydrophobic)



The Namou Hotel Group

BOWERS+ASSOCIATES ARCHITECTURE DESIGN

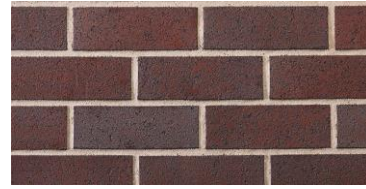
EXTERIOR FINISHES-HOTEL 'A'

2800 JACKSON AVENUE DEVELOPMENT



EXTERIOR FINISH LEGEND

TAG	MATERIAL	MANUF/STYLE	COLOR
A	BRICK	BELDEN	BRANDYWINE
B	BRICK	GLEN GERY	EBONITE SMOOTH
C	STONE	ROCKCAST MASONRY VENEER	BUFFSTONE, SMOOTH, 12" X 24"
D	STONE	ROCKCAST ACCENT BAND	CRYSTAL WHITE
E	E.I.F.S.		MATCH SW6711 PARAKEET
F	METAL PANEL	ATAS / PAC-CLAD	CLEAR ANODIZED
G	METAL TRIM	ATAS / PAC-CLAD	CLEAR ANODIZED
H	ALUM. FRAME	ATAS / PAC-CLAD	CLEAR ANODIZED
J	METAL COPING	ATAS / PAC-CLAD	MATCH ADJACENT MAT'L
K	PAINT	SHERWIN WILLIAMS	SW7631 CITY LOFT



Brandywine Velour 'A'



Ebonite Smooth 'B'



Buffstone 'C'



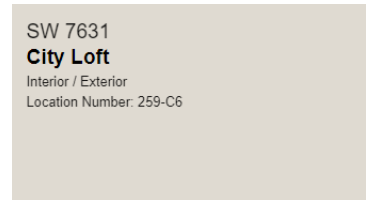
Crystal White 'D'



SW 6711
Parakeet
Interior / Exterior
Location Number: 148-C5



'F,G,H'



SW 7631
City Loft
Interior / Exterior
Location Number: 259-C6

EXTERIOR FINISHES-HOTEL 'B'

2800 JACKSON AVENUE DEVELOPMENT



The Namou Hotel Group

BOWERS+ASSOCIATES
ARCHITECTURE DESIGN



HOTEL 'A' RENDERING

2800 JACKSON AVENUE DEVELOPMENT



The Namou Hotel Group

BOWERS+ASSOCIATES
ARCHITECTURE DESIGN



HOTEL 'B' RENDERINGS

2800 JACKSON AVENUE DEVELOPMENT



The Namou Hotel Group

BOWERS+ASSOCIATES
ARCHITECTURE DESIGN



SITE RENDERINGS

2800 JACKSON AVENUE DEVELOPMENT



The Namou Hotel Group

BOWERS+ASSOCIATES
ARCHITECTURE DESIGN



SITE RENDERINGS

2800 JACKSON AVENUE DEVELOPMENT



The Namou Hotel Group

BOWERS+ASSOCIATES
ARCHITECTURE DESIGN



SITE RENDERINGS

2800 JACKSON AVENUE DEVELOPMENT



The Namou Hotel Group

BOWERS+ASSOCIATES
ARCHITECTURE DESIGN



SITE RENDERINGS

2800 JACKSON AVENUE DEVELOPMENT



The Namou Hotel Group

BOWERS+ASSOCIATES
ARCHITECTURE DESIGN