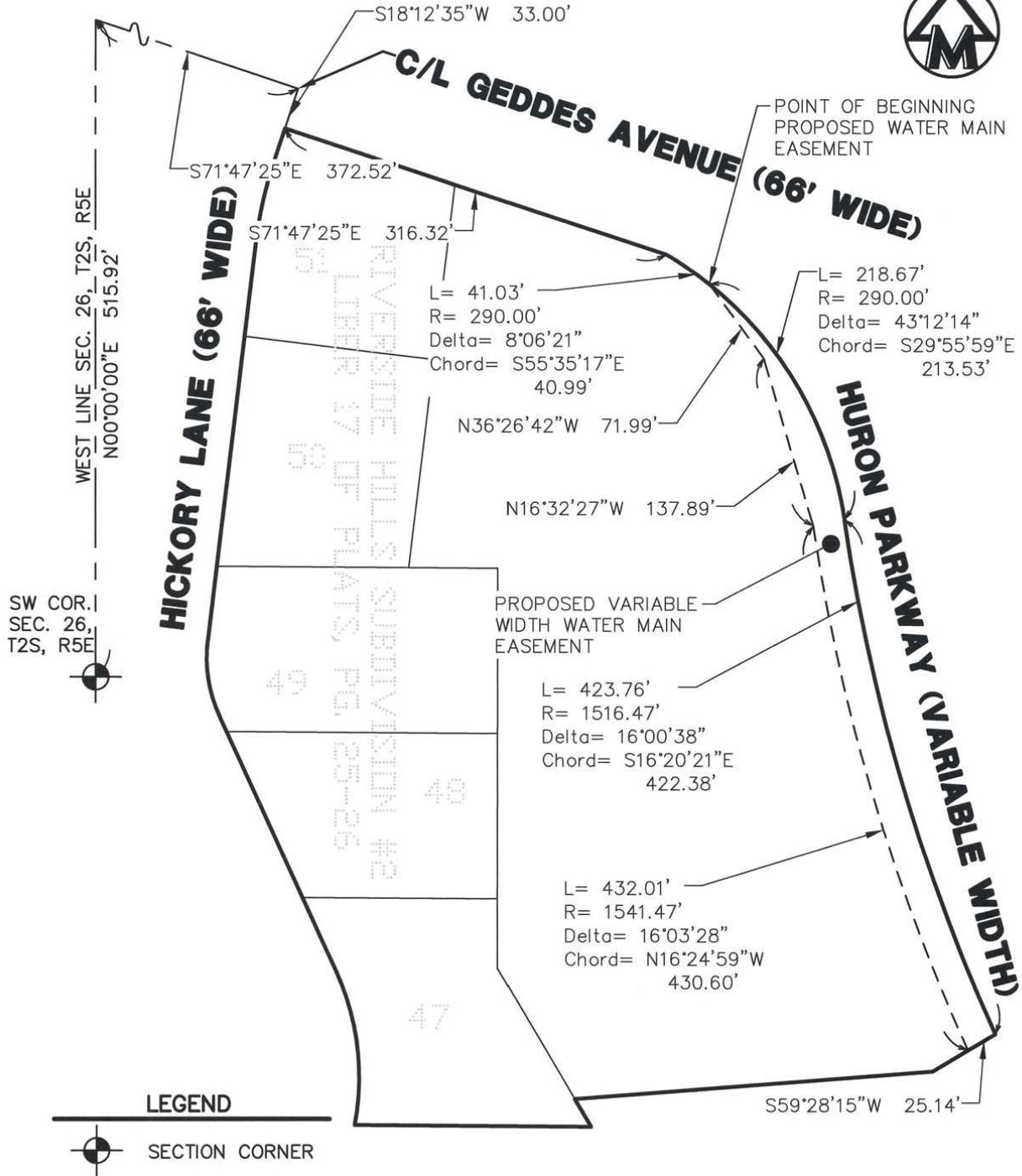


PROPOSED WATER MAIN EASEMENT LOCATED IN THE SW 1/4 OF SECTION 26 & THE NW 1/4 OF SECTION 35, TOWN 2 SOUTH, RANGE 6 EAST, CITY OF ANN ARBOR, WASHTENAW COUNTY, MICHIGAN

EXHIBIT A



BASIS OF BEARING: BEARINGS BASED ON PREVIOUS MIDWESTERN CONSULTING, LLC JOB #98133

CLIENT: RACQUET CLUB OF ANN ARBOR	DATE: 03/15/16	
JOB NO.: <b>14058</b>	SHEET 1 OF 2	
SECTION: 26/35 TWN: 02S RANGE: 06E	SCALE: 1in. = 100 ft.	
CITY OF ANN ARBOR	BOOK: N/A	
WASHTENAW COUNTY, MICHIGAN	BY: pk	
<p><b>MIDWESTERN CONSULTING</b> 3815 Plaza Drive Ann Arbor, Michigan 48108 (734) 995-0200 • www.midwesternconsulting.com Land Development • Land Survey • Institutional • Municipal Wireless Communications • Transportation • Landfill Services</p>		