

Windemere Park Tennis Courts Update

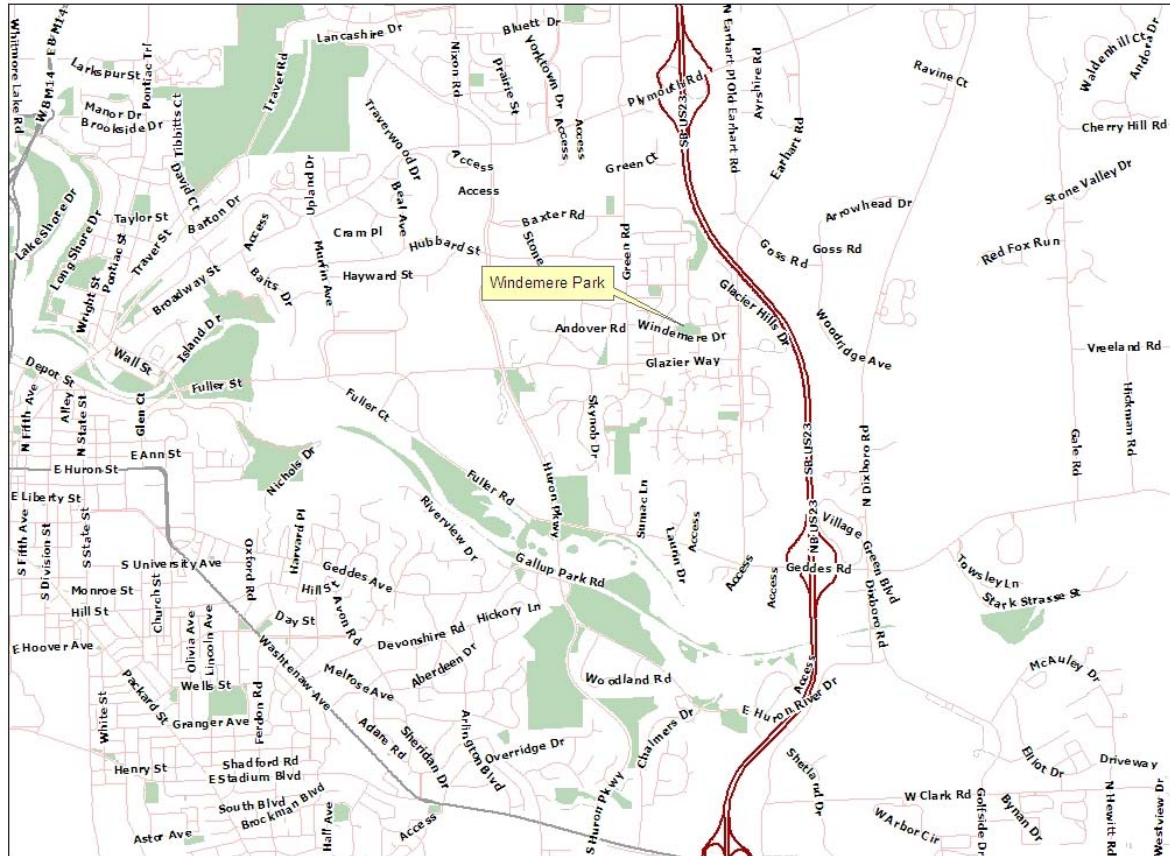
Windemere Park Aerial Photo



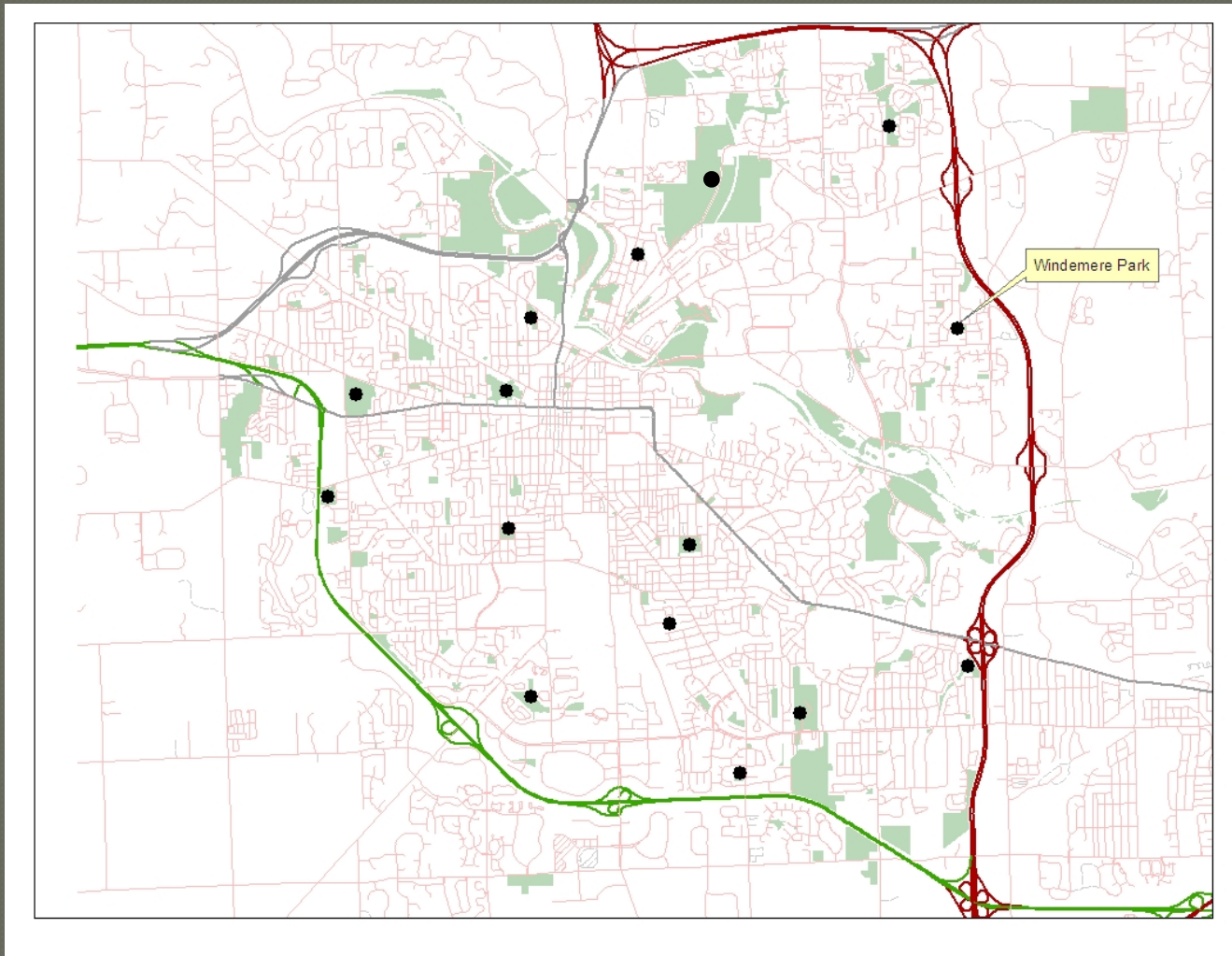
Windemere Park

0 25 50 100 150 200 Feet

Windemere Park Location Map



Location of tennis courts in City of Ann Arbor parks



View towards play area with existing court cracks



View East at court with missing net post



Crack from net post

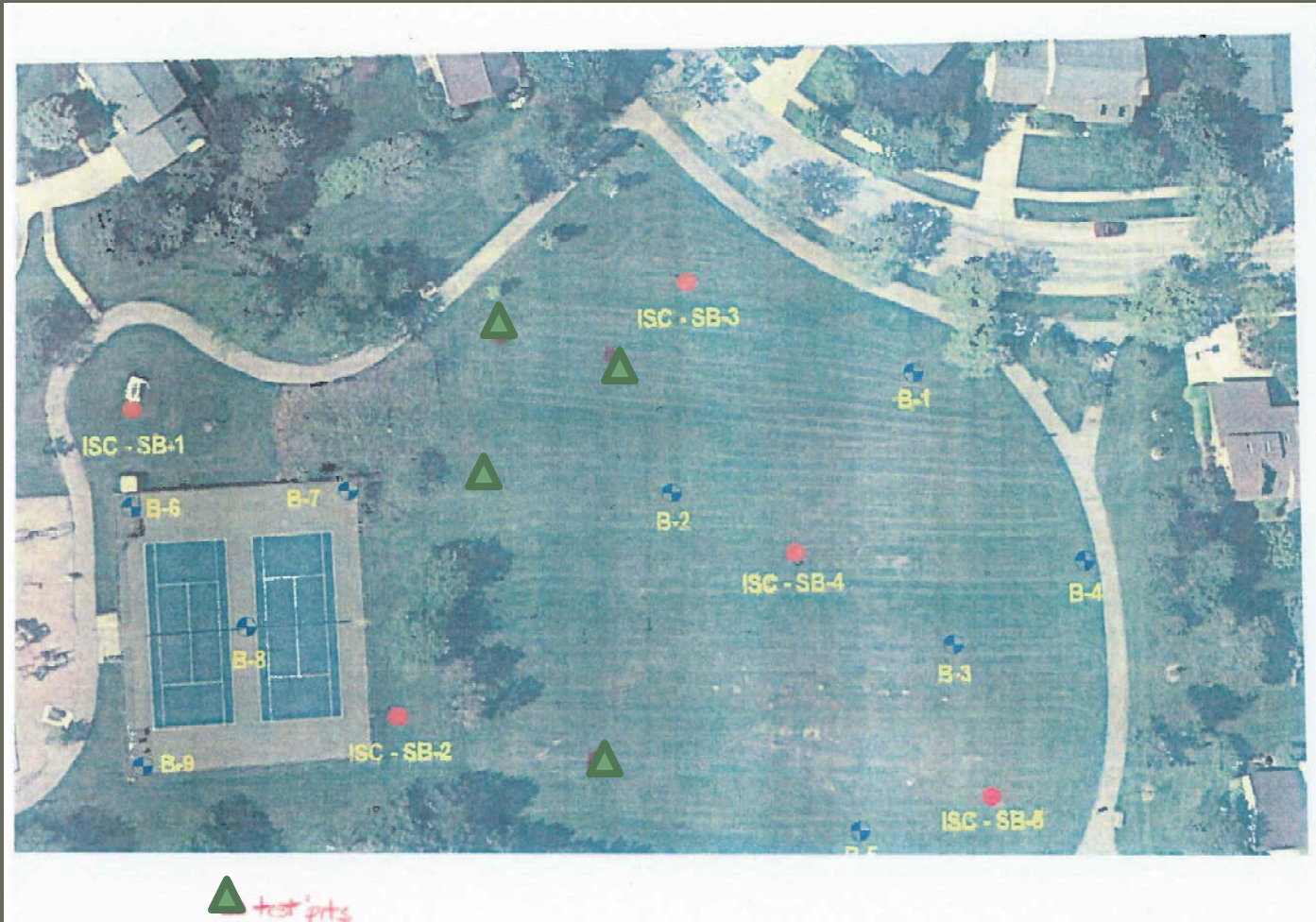


Windemere Tennis Courts

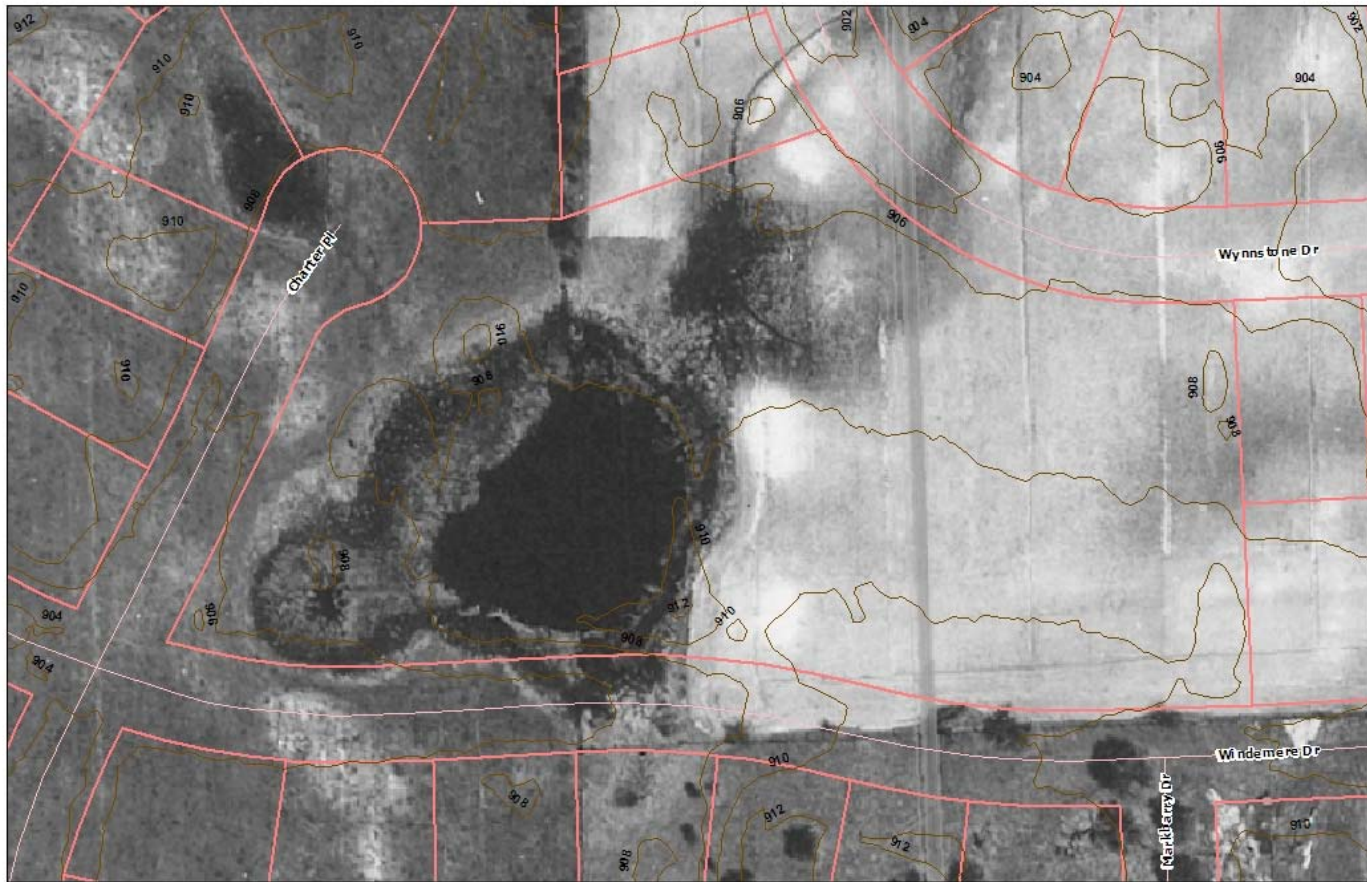
History and Update

- Courts built initially in 1986
- Color coated in 2007
- Crack repairs attempted in 2009 but failed due to poor soils
- New net posts were installed in Summer of 2009, but also failed
- Soil borings taken in 2011 show saturated organic soils and fill in location of existing courts
- Second set of soil borings completed May, 2012 with recommendations for construction
- Third set of soil borings taken in June 2012 through asphalt of tennis court showed extremely poor soils

Soil Boring Locations



Aerial Photo 1947



Windemere Park

0 80 160 320 Feet

Location Option 1



Location Option 2

- Relocate softbill backstop necessary
- New path connection - approx 240 LF - approx \$6,000 for access
- Existing buffer on S-side of proposed dt.



Location Option 3

- Court accessible from North + South
- Existing buffer on east side
- Adding buffer on north + south won't use additional field space



Location Option 4



Next Steps

- Majority of public meeting participants favored option 4
- After final recommendation from PAC, work on funding application for rain garden
- Obtain topographical survey
- Produce construction documents
- Bid project mid winter
- Construction summer, 2013