

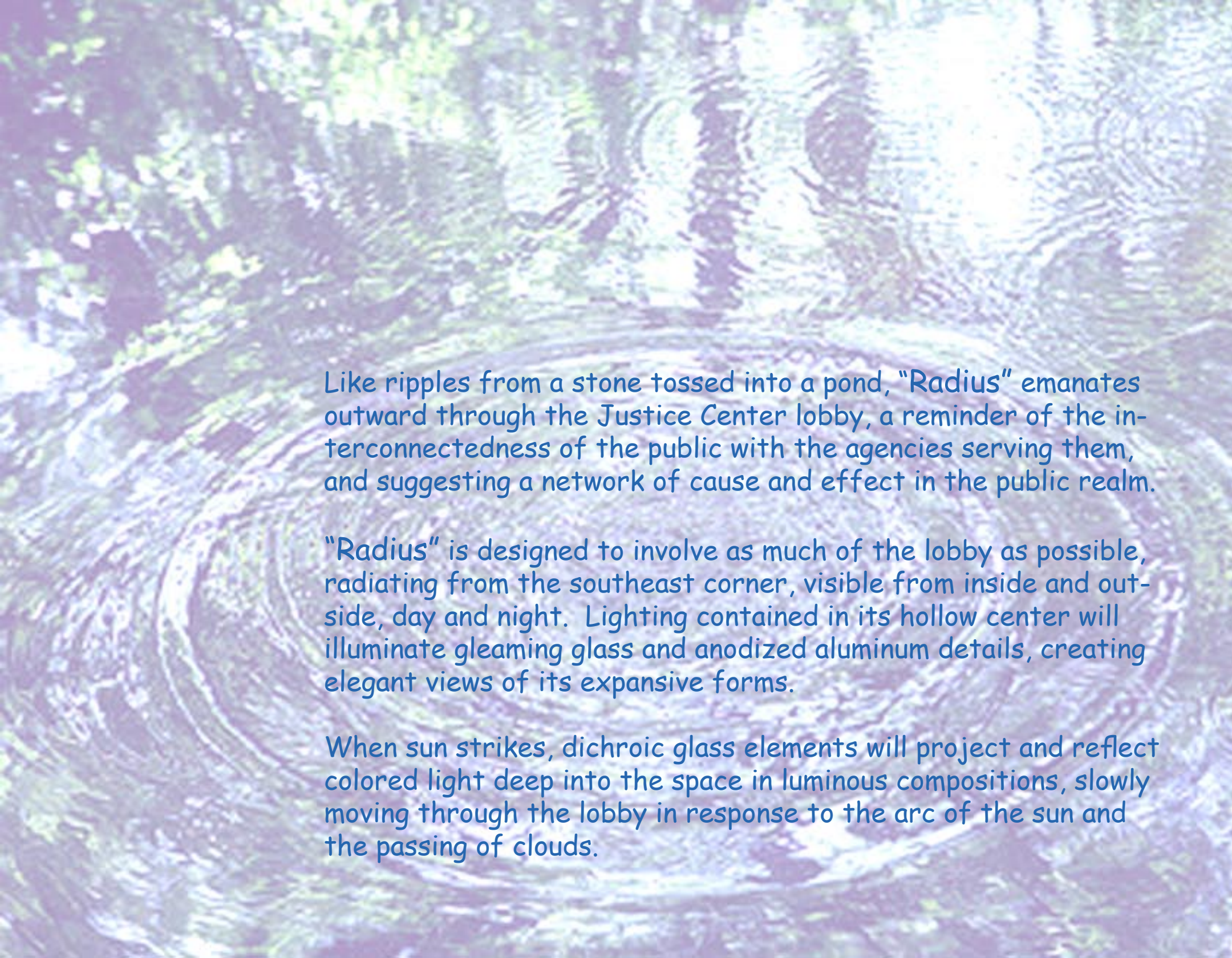


"Radius"

Ann Arbor Justice Center

Ed Carpenter 12/2011

Project Description



Like ripples from a stone tossed into a pond, "Radius" emanates outward through the Justice Center lobby, a reminder of the interconnectedness of the public with the agencies serving them, and suggesting a network of cause and effect in the public realm.

"Radius" is designed to involve as much of the lobby as possible, radiating from the southeast corner, visible from inside and outside, day and night. Lighting contained in its hollow center will illuminate gleaming glass and anodized aluminum details, creating elegant views of its expansive forms.

When sun strikes, dichroic glass elements will project and reflect colored light deep into the space in luminous compositions, slowly moving through the lobby in response to the arc of the sun and the passing of clouds.

Materials: Dichroic glass, aluminum, stainless steel, lighting.

Dimensions: 40' x 20' x 12'

Lighting: Integral LED spot & flood lighting included. Electrical feed and controls by Owner.

Engineering: Artist's drawings will be approved by a locally licensed structural engineer.

Installation: Installation will occur in two phases:

1. Structural modifications (approximately one week)
2. Sculpture installation (approximately one week) employing scissor lifts and ladders.

Maintenance: Since all parts of the sculpture will be out of reach, very little maintenance will be necessary. It can be dusted approximately once a year with a feather duster on a pole. Access to lights and sprinkler heads will be accommodated by providing removable elements in four areas.

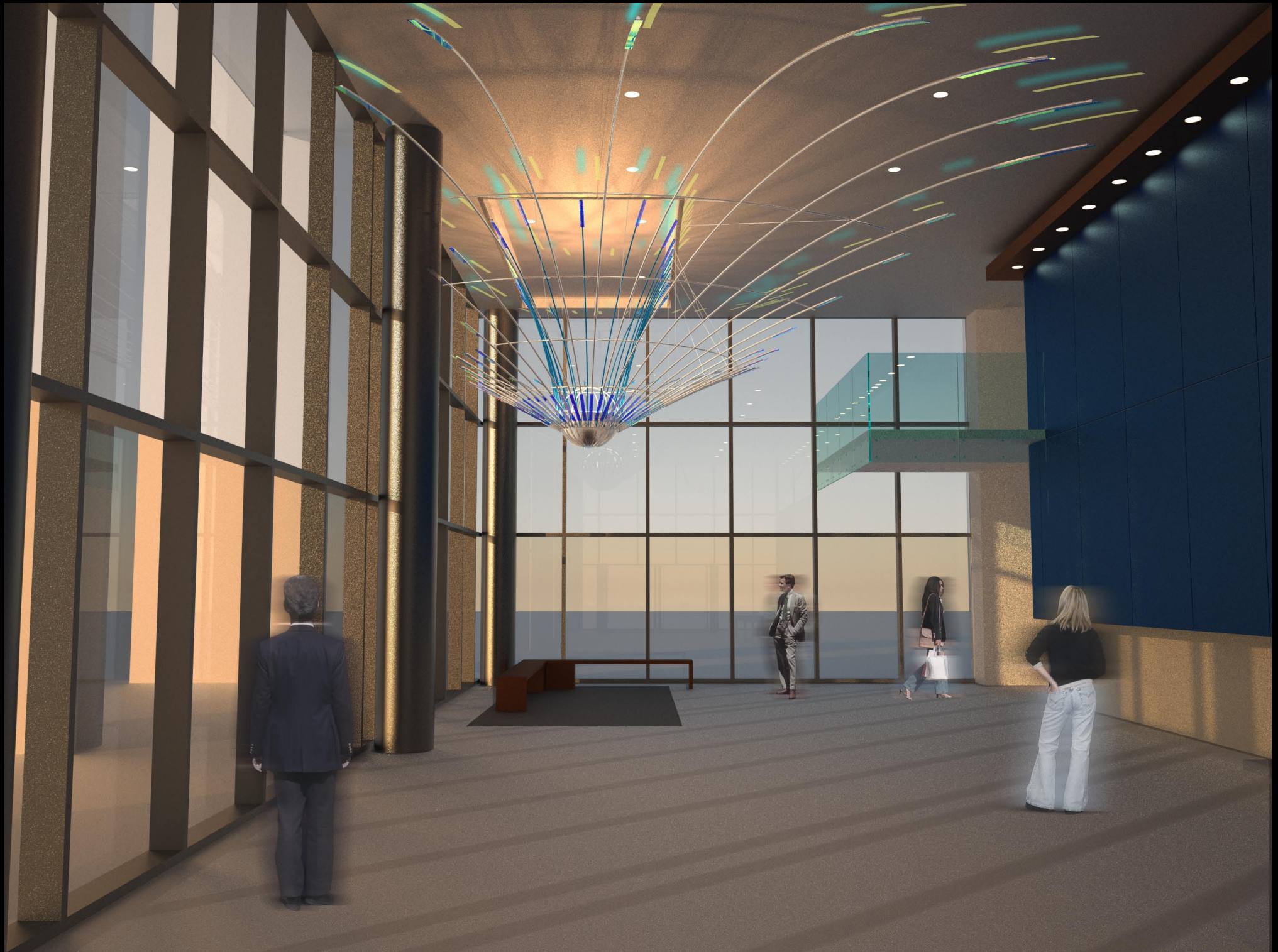
Safety: Artist's drawings to be approved by a locally licensed structural engineer. Glass elements to be laminated with a permanent, clear, shatter prevention safety film.

Fabrication: All components to be prefabricated under artist's supervision prior to installation.

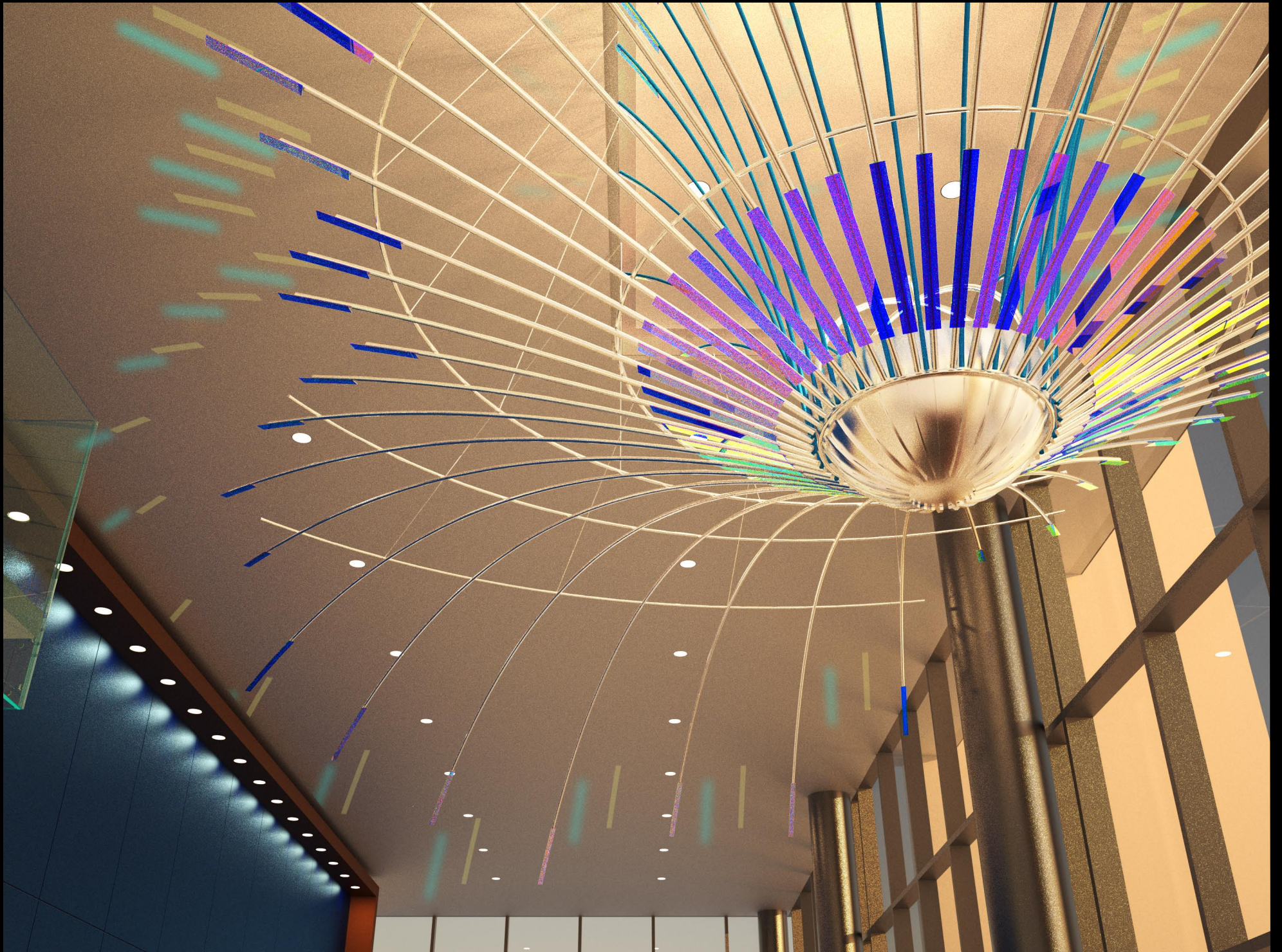
Schedule: After notice to proceed, fabrication should take four to six months, crating and shipping one month, site preparation about one week, and installation about one week.

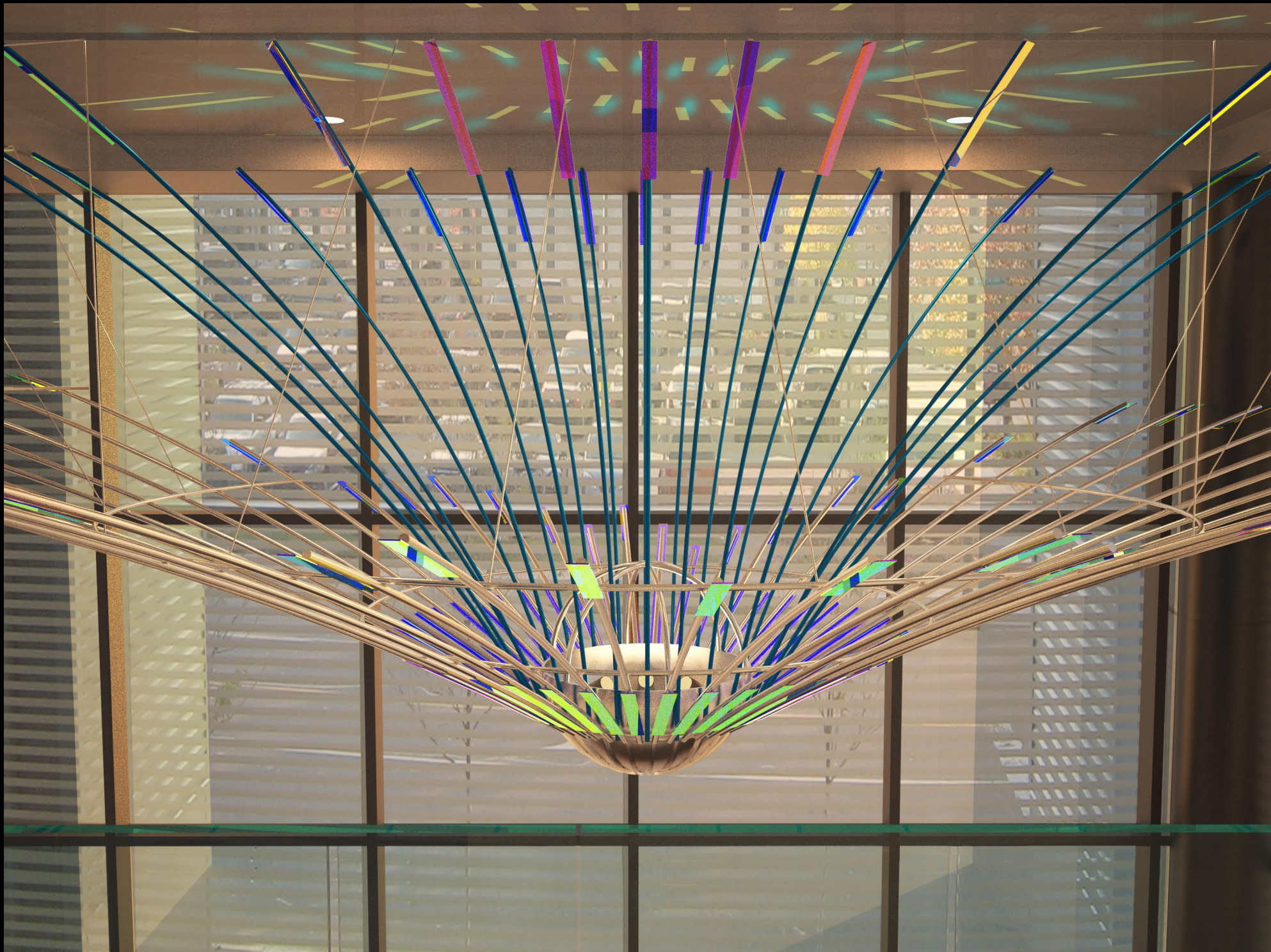
Budget: attached.

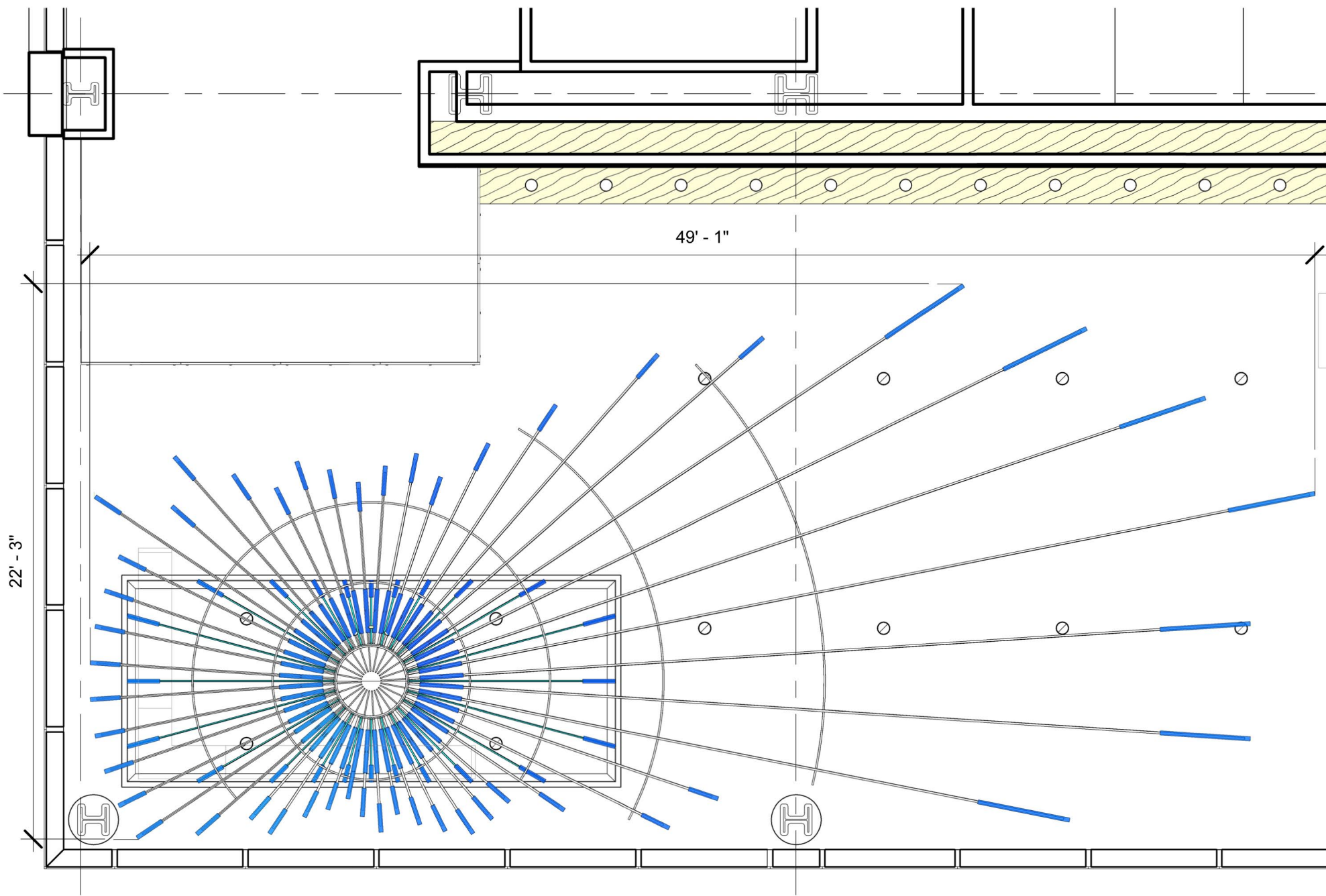
Renderings







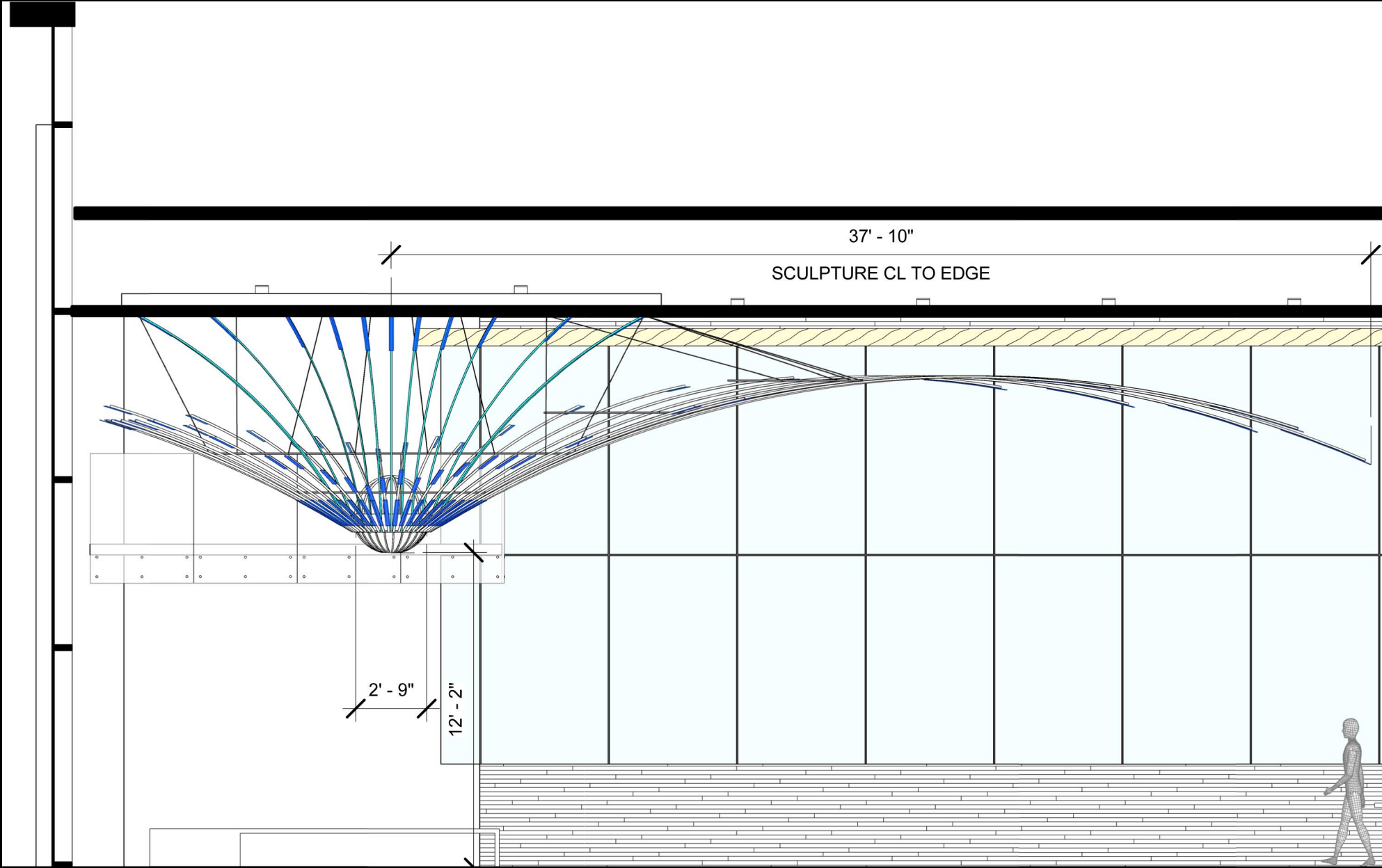




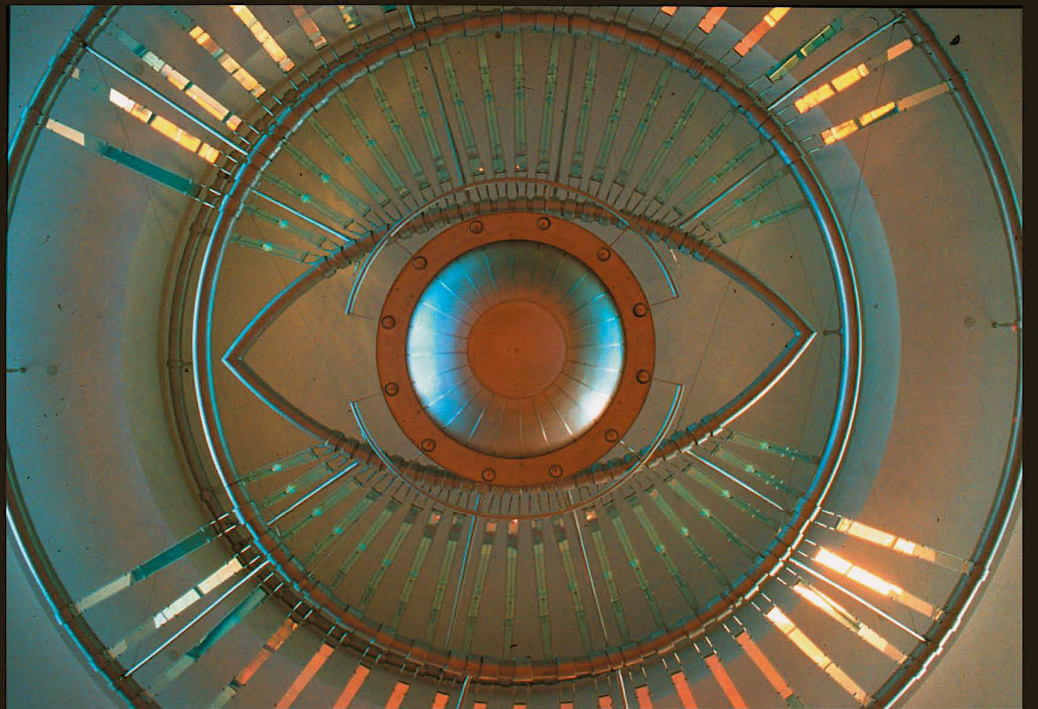
22' - 3"

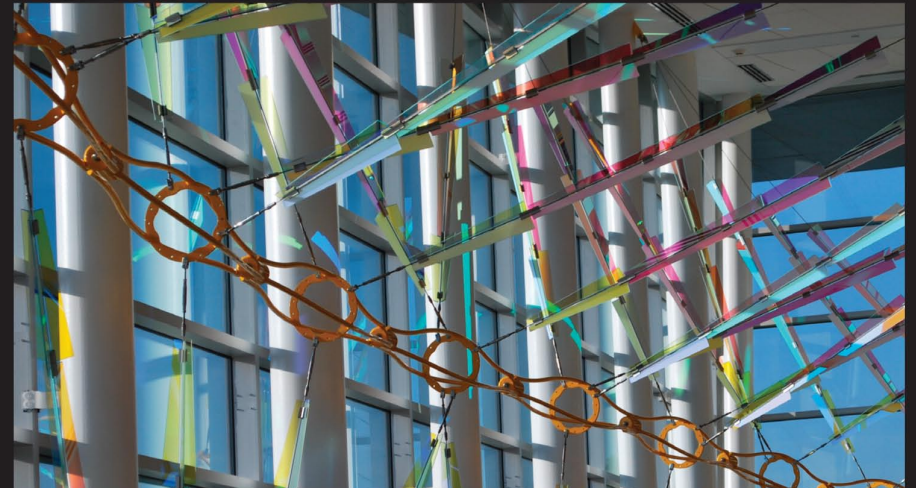
49' - 1"



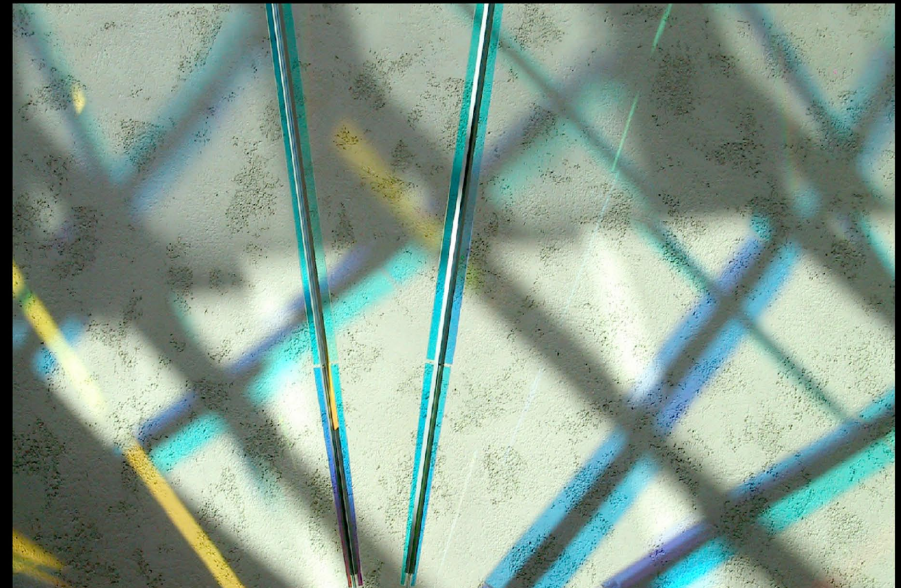
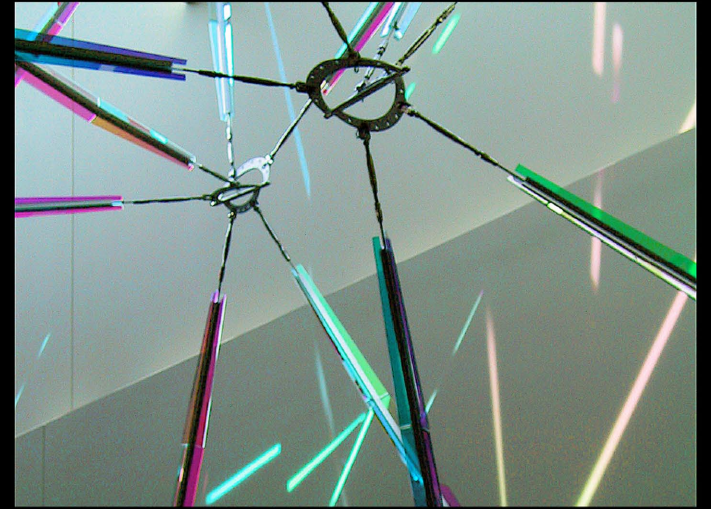
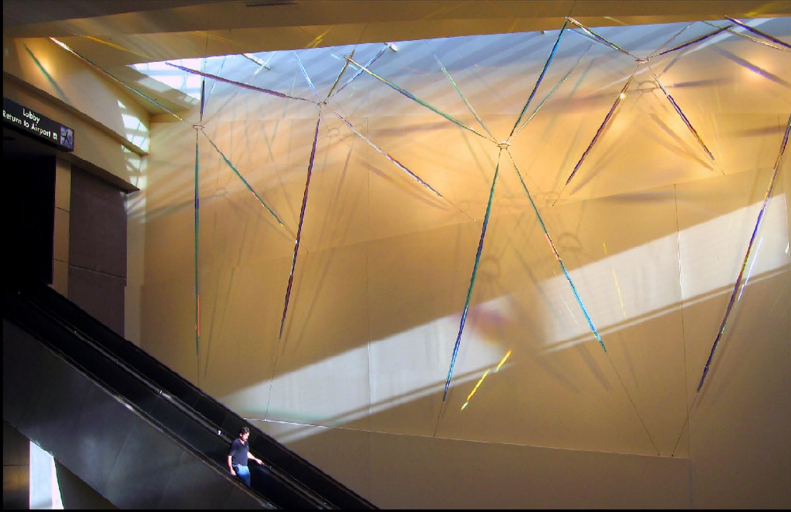


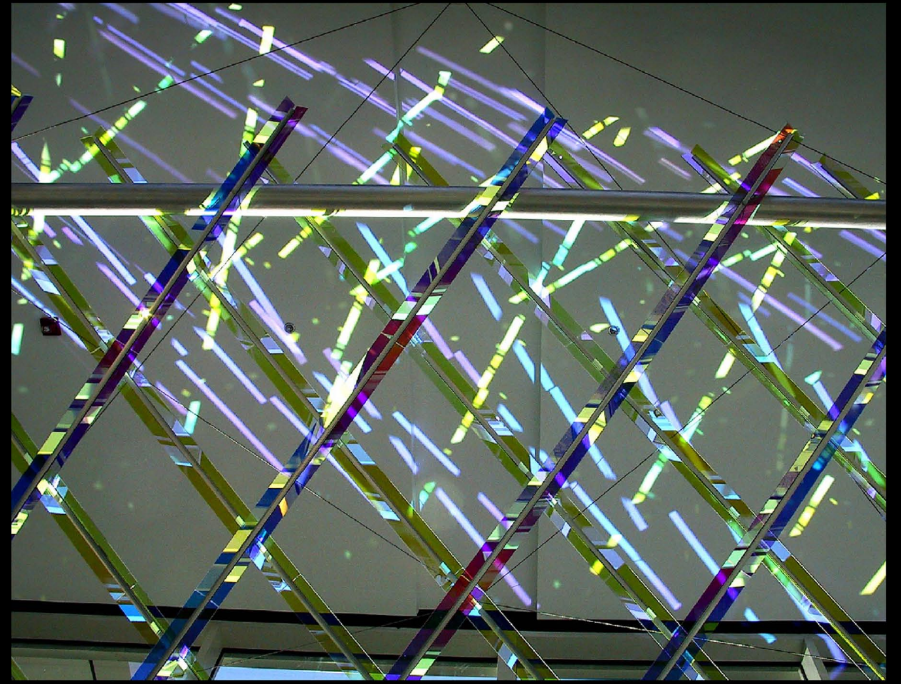
Representative Past Work



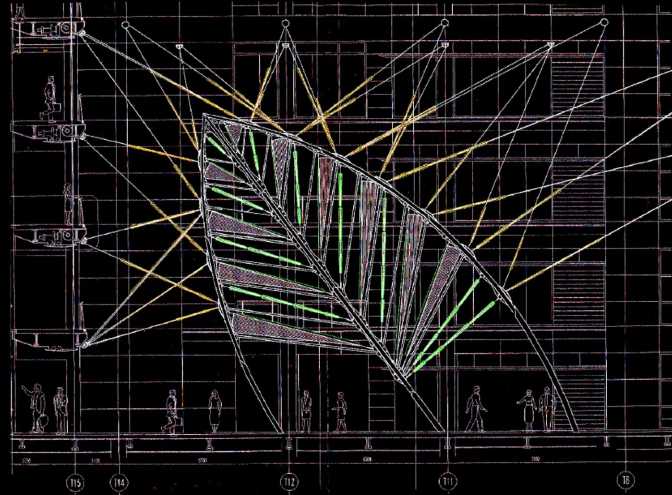


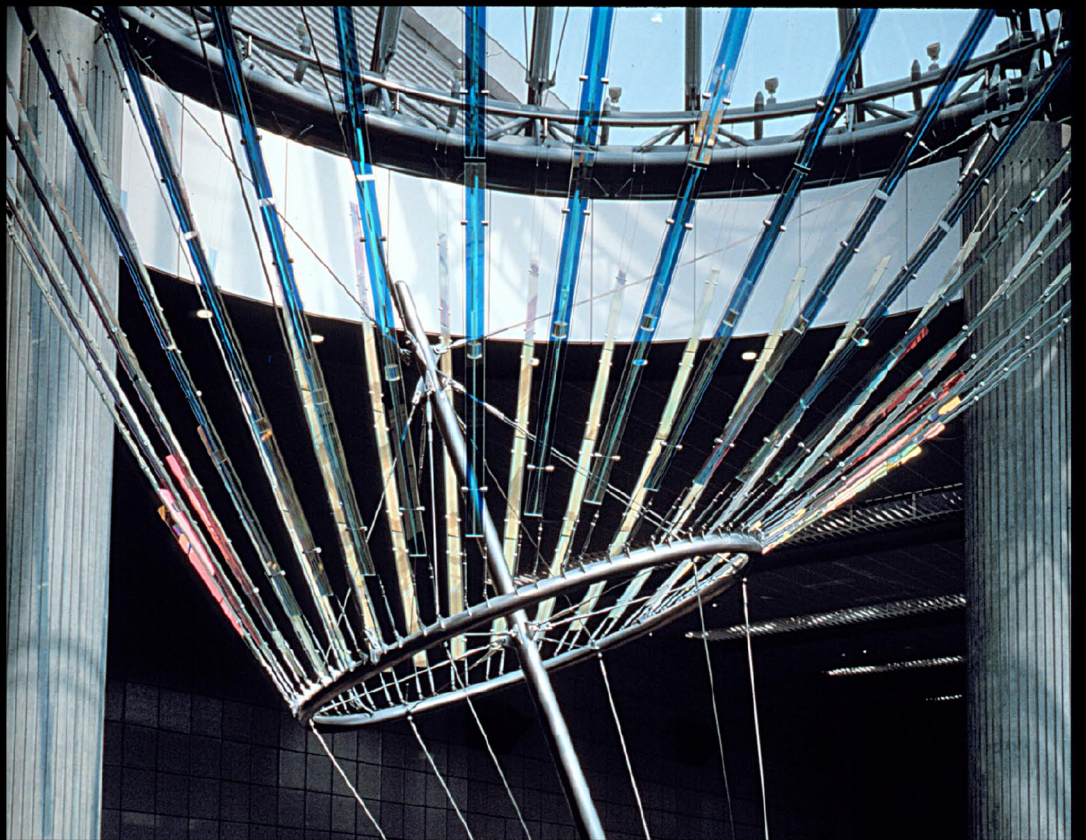
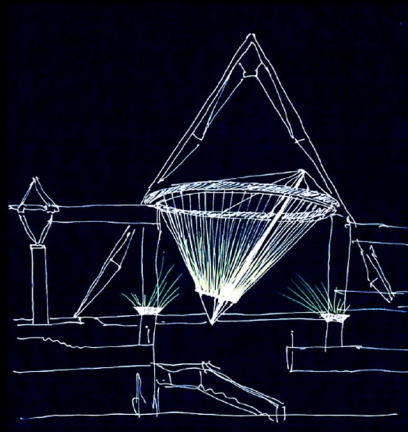
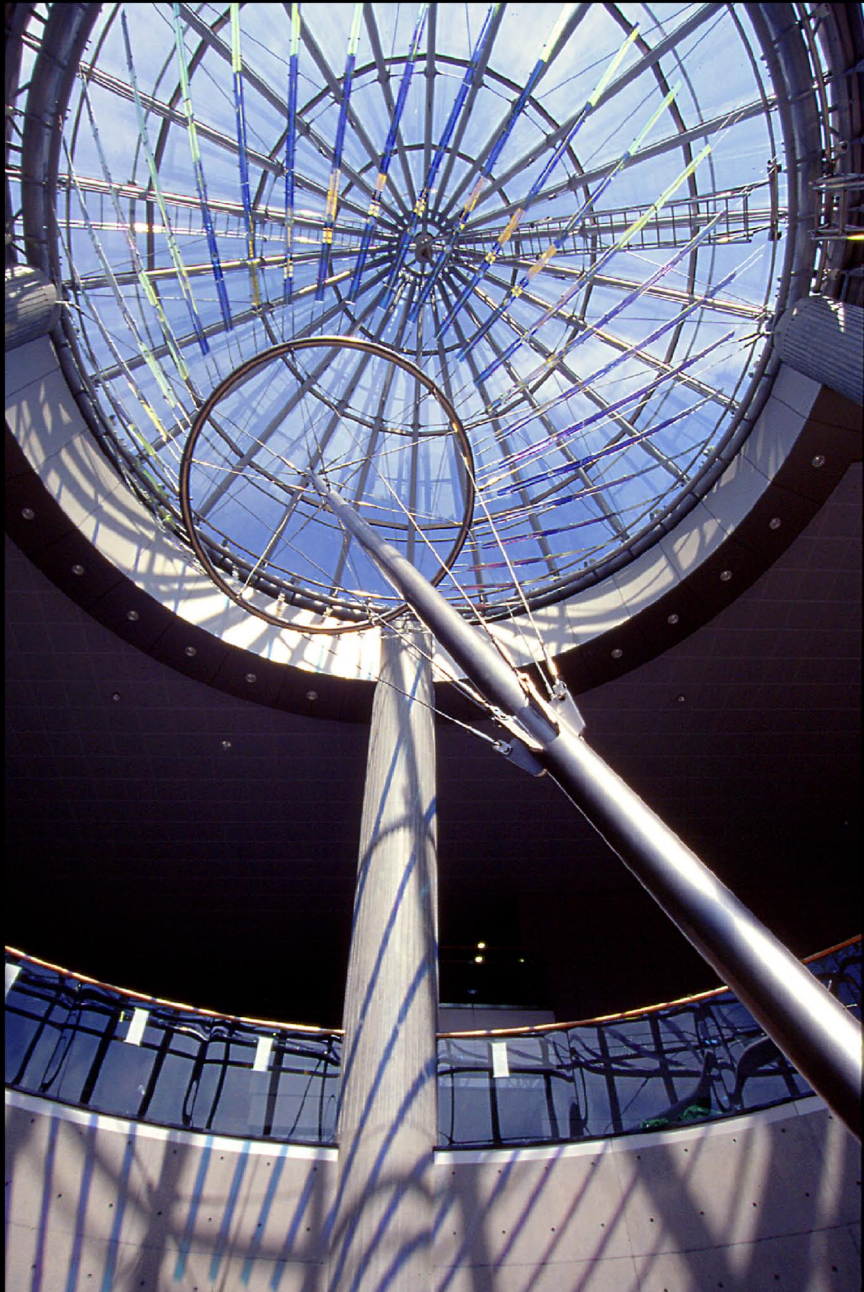












Bio

Ed Carpenter, Artist ed@edcarpenter.net

Revision 10/11/11

Born: Los Angeles, California. 1946**Education:** University of California, Santa Barbara 1965-6, Berkeley 1968-71

Ed Carpenter is an artist specializing in large-scale public installations ranging from architectural sculpture to infrastructure design. Since 1973 he has completed scores of projects for public, corporate, and ecclesiastical clients. Working internationally from his studio in Portland, Oregon, USA, Carpenter collaborates with a variety of expert consultants, sub-contractors, and studio assistants. He personally oversees every step of each commission, and installs them himself with a crew of long-time helpers, except in the case of the largest objects, such as bridges.

While an interest in light has been fundamental to virtually all of Carpenter's work, he also embraces commissions that require new approaches and skills. This openness has led to increasing variety in his commissions and a wide range of sites and materials. Recent projects include interior and exterior sculptures, bridges, towers, and gateways. His use of glass in new configurations, programmed artificial lighting, and unusual tension structures have broken new ground in architectural art. He is known as an eager and open-minded collaborator as well as technical innovator.

Carpenter is grandson of a painter/sculptor, and step-son of an architect, in whose office he worked summers as a teenager. He studied architectural glass art under artists in England and Germany during the early 1970's. Information on his projects and a video about his methods can be found at: <http://www.edcarpenter.net/>

Commissions

Bridge And Exterior Public Commissions

- 2008: Broadway Viaduct, Council Bluffs, IA, Gateway Bridge, 76' x 99' x 34' (in progress)
- 2008: Fred Hutchinson Cancer Research Center, Seattle, WA, Plaza sculpture, 60' x 39' x 39'.
- 2006: Portland State University, Maseeh College of Engineering, Plaza sculpture, 200' x 40' x 40'.
- 2006: Redmond City Hall, Redmond Washington, Exterior/interior entrance sculpture, 170' x 45' x 20'.
- 2005: Broadway Roundabout, Belfast, Northern Ireland, Gateway sculpture, 42m x 42m. (In Progress)
- 2005: John A. Burns School of Medicine, Honolulu, HI, Exterior Sculpture, 72' x 143' x 31'.
- 2004: Golden Springs Industrial Park, Los Angeles County, California, Gateway Sculpture, 60' x 45' x 10'.
- 2004: Las Vegas Pedestrian Bridge, Las Vegas, NV – 300' Pedestrian bridge across Las Vegas Blvd. Connecting Las Vegas City Hall with the new City Hall Annex (Unbuilt).
- 2004: Kaohsiung Rapid Transit Corp., Taiwan, Republic of China, Exterior/interior subway station sculpture, 100' x 50' x 30' (Unbuilt).
- 2001: Fishbird Pedestrian Bridge For Airport Light Rail Station, Portland, Oregon, 155' X 14' X 22'.
- 2001: Ballona Creek Pedestrian Bridge, Culver City, California 160' x 16' (Unbuilt).
- 2000: Broadway Viaduct, Denver, Colorado - Exterior Sculpture For Broadway Viaduct Project, 75' X 40' X 12'.
- 2000: 150 California Street, San Francisco, California, Roof Garden Sculpture, 52'x 19' X 20'.
- 2000: San Antonio Convention Center Pedestrian Bridge, San Antonio, Tx, 12' X 140' (Unbuilt).
- 1998: Trinity River Bridge, Dallas, Texas, 2000' x 1001', 7 lanes - Freeway Bridge (Unbuilt).
- 1998: Dean Science Bldg., Central Washington University At Ellensburg -Atrium Bridge Sculpture.
- 1998: Normandale Community College, Minneapolis, Mn - Exterior Sculpture.
- 1997: Cave Creek Pedestrian Bridge, Phoenix, Arizona - 220' X 10' X 36'.
- 1994: Community College, Salt Lake City, Ut, With Michael McCulloch & John Rogers - Curtain Wall Light Sculpture.
- 1994: Bellevue Convention Center, Bellevue, Washington - Sculpture & Fountain.
- 1992: City Hall Plaza, Orlando, Florida - 60' Stainless Steel And Glass Tower.
- 1986: Willamette University, Salem, Oregon - 60' Glass, Concrete And Brick Clock Tower.

Interior Public Commissions

- 2011: Brody Hall Michigan State University, East Lansing, MI, Atrium Sculpture, 94' x 30' x 30'.
- 2010: Raleigh-Durham International Airport, Raleigh, North Carolina, Interior sculpture, 86' long x 78' wide x 51' high.
- 2006: Minnesota Dept. of Health & Agriculture, Orville L. Freeman Bldg, St. Paul, MN, with John Rogers, Lobby sculpture, 55' x 44' x 30'.
- 2006: Sky Harbor International Airport, Phoenix, AZ - Design consultant for \$250,000,000. facility, plus artist for seven integrated light sculpture installations.
- 2004: U.S. Courthouse, Seattle, Washington, Interior Sculpture, 54' x 24' x 100'.
- 2004: UCSD, School Of Medicine Research Facility – Atrium sculpture, floor, & benches, 28' x 28' x 72'.
- 2003: Richmond Convention Center, Richmond, Va, Pedestrian Bridge Walkway Sculpture, 100' x 16' x 24'.
- 2003: Dallas Convention Center, Dallas, Texas, Lobby Light Sculpture, 60' X 800'.
- 2001: Memphis, Tennessee Central Library - Atrium Sculpture, 60' X 36' X 15'.
- 2001: Houston, Texas, George Bush International Airport, North Concourse Sculpture.
- 1999: Hokkaido Sports Center, Sapporo, Japan - Entry Pavilion Sculpture.
- 1998: Shiho-Shoshi Lawyer Association Building, Tokyo, Japan, Suspended Sculpture.
- 1997: Washington County, Oregon, Justice Complex, With John Rogers - Atrium Lobby Sculpture .
- 1997: Queens Civil Court, New York City, New York- Lobby Sculpture.
- 1997: Miami Int'L. Airport, Miami, Florida, With Michael Mcculloch & John Rogers - Light Sculptures.
- 1997: Juvenile Justice Complex, Portland, Oregon, With John Rogers - Lobby Sculpture.
- 1997: Carlson School Of Management, University Of Minnesota.
- 1996: Morgan Library, Colorado State University, Ft. Collins - Light Sculpture .
- 1995: Red Cross College, Akita, Japan - Stairwell Sculpture.
- 1995: City Hall, Culver City, California - Glass Screens.
- 1993: University Of Wisconsin, Madison, School Of Business Administration - Library Window.
- 1993: University Center, Rochester, Minnesota - Atrium Sculpture.
- 1993: Federal Building, Oakland, California - Rotunda Glazing.
- 1993: Broward Community College, Ft. Lauderdale, Florida - Library Skylight & Sculpture.
- 1992: Human Resources Building, Salem, Oregon- Lobby Sculpture.
- 1992: Ft. Myers, Florida, Regional Service Center - Lobby Sculpture And Skylight.
- 1991: Portland, OR. International Airport, With Michael Mcculloch & John Rogers - Ticket Lobby Sculpture.
- 1991: Orlando City Hall, Orlando, Florida - Lobby Light Panels.
- 1987: University Of Oregon, Cell Biology Building - Lounge Glazing.
- 1987: Spring Valley Library, Las Vegas, Nevada - Lobby Windows.
- 1987: Chugiak High School, Anchorage, Alaska - Stairwell Window.
- 1986: Oregon Institute Of Technology, Klamath Falls, Or. - Skylight Glazing & Light Environment.
- 1985: Performing Arts Center, Anchorage, Alaska- Lobby Glazing Panels.
- 1983: Justice Center, Portland, Oregon - Lobby Window.
- 1983: Community Center, Carson, California - Lounge Window.
- 1981: Performing Arts Center, Eugene, Oregon - Bridge Glazing.
- 1979: State Executive Office Building, Salem, Oregon - Clerestory Glazing.
- 1979: Oregon State Capital Wings, Salem, Oregon - Hallway Glass Panel.
- 1979: Oregon School Of Arts And Crafts, Portland, Oregon - Breezeway Window.
- 1973: Mono County Courthouse, Bridgeport, California - Entry Glazing.

Corporate Commissions

- 2002: Wells Fargo Tower, Denver, CO - Atrium sculpture, 118' x 48' x 90'.
- 2001: SAFECO Insurance Company, Redmond, WA, Lobby Sculpture, 46' x 60' x 24'.
- 2000: ADC Telecommunications, Minneapolis, Mn, With John Rogers, Lobby Sculpture 15' X 75'.
- 2000: 520 North Michigan Avenue, Chicago, Illinois, Entry Lobby Sculpture, 72' X 49' X 37'.
- 1999: Sterling Commerce Building, Dallas, Texas, Lobby Sculpture.
- 1994: Renaissance Towers, Los Angeles, California - Lobby Windows.
- 1993: Boeing Corp., Seattle, Washington, With Michael Mcculloch & John Rogers - Theatre Lobby Sculpture.
- 1992: 1251 Rockefeller Center, New York City, New York- Lobby Transom Windows.

1989: Salem Cinemas, Salem, Oregon - Lobby Sculptures.
 1986: Kaiser Permanente Clinic, Sunset, Portland, Oregon - Waiting Area Windows.
 1985: Platt/Gibbs Medical Center, Hillsboro, Oregon - Lobby Windows.
 1985: Kaiser Permanente Clinic, Rockwood, Portland, Oregon - Lobby & Waiting Room Windows.
 1985: Aberdeen Office Tower, Dallas, Texas- Skylight & Mirrored Sculptures.
 1983: Allergy Clinic, Portland, Oregon - Entry Door & Waiting Room Windows.
 1981: Headquarters, Omark Industries, Milwaukie, Oregon - Second Floor Screen.

Church Commissions

1997: St. Mark's Cathedral - Seattle, Washington - Monumental Screen And Rose.
 1988: Congregation Neveh Shalom, Portland, Oregon - Ark Doors And Aisle Windows.
 1983: First Community Church, Dallas, Texas - Twelve Sanctuary Windows.
 1979: United Church Of Christ, Forest Grove, Oregon - Sanctuary Window.
 1977: St. Clare'S Church, Portland, Oregon - Chapel Window.
 1976: Adventist Hospital Chapel, Portland, Oregon- Chapel Window & Door.
 1974: Christ Church, Lake Oswego, Oregon - Chapel Window

Publications

2011: Public Architecture: The Art Inside, Curtis Fentress, ORO Editions.
 2009: Illuminet internet lighting review, Mexico, February.
 2009: American Craft Magazine, February/March.
 2008: L'ARCA, Milano, Italy, #240, October.
 2007: Dossier LighTech, Italy, April.
 2006: L'ARCA, Milano, Italy, #219, November.
 2006: American Craft, Aug./Sept. 2006.
 2005: Glass Magazine, August.
 2005: FLARE, Architectural Lighting Magazine, Italy, No. 38, April 2005.
 2004: THIS SIDE UP!, Autumn.
 2004: American Craft Magazine, June/July.
 2004: Architectural Record, May.
 2004: L'ARCA, Milano, Italy, #191, April.
 2003: COLORFULNESS, Beijing, China, March.
 2003: GLASS ART, January/February.
 2003: The History of Stained Glass. The Art of Light Medieval to Contemporary, Virginia Chieffo Raguin, Thames & Hudson Ltd.
 2002: Reflections on Glass, 20th Century Stained Glass in American Art and Architecture, American Bible Society.
 2002: L'ARCA, Milano, Italy, #171.
 2002, June: Designing the World's Best Public Art, The Images Publishing Group Pty Ltd.
 2002: Texas Architect, March/April.
 2001: THIS SIDE UP!, The Netherlands, Summer.
 2001: PUBLIC ART REVIEW, Spring/Summer2001.
 2001: Ed Carpenter, Breath Of Light, L'ARCA Edizioni Publishers.
 2000: Competitions, Winter 1999/2000.
 1999: L'ARCA, Milano, Italy, #139, July/August.
 1999: Visual Architecture 275, Vol. 35, Tokyo, Japan, March.
 1999: Artisans Series: Glass, The Ivy Press Limited, Watson Guptill Publishers.
 1998: L'ARCA, Milano, Italy, #132, December.
 1988: Architectural Record, July.
 1988: Architectural Record, June.
 1998: L'ARCA, Milano, Italy, #127, June.
 1998: Metropolis, May.
 1998: Sculpture, April.

1998: Corporate Design, Tokyo Japan, March.
1997-1998: Muebles Y Decoración "X Año", Gold Edition Magazine, Mexico City, Mexico, A-o 11, No. 58.
1997: The Art Of Glass: Integrating Architecture And Glass, Stephen Knapp, Rockport Publishers.
1997: Architectural Glass Art, Andrew Moore, Rizzoli International Publications, Inc..
1997: Neues Glas, April (1/97).
1996: American Craft Magazine, June/July.
1995: Wisconsin Architect, March/April.
1995: Public Art Review, Fall/Winter.
1995: Architectural Record, May.
1994: Professional Stained Glass Magazine, June/July.
1994: Revista Del Vidrio Plano, #27, January/February.
1994: Architectural Digest, August.
1993: Stained Glass Magazine, Summer.
1993: Professional Stained Glass Magazine, October/November.
1993: New Glass Review, May, #14.
1993: Design And Living Magazine, Winter.
1992: Places, April.
1992: Architecture, June.
1992: 20th Century Stained Glass: A New Definition, Robert Kehlmann, Kyoto Shoin Co.,Ltd. Publishers.
1991: The Beauty Of Stained Glass, Patrick Reynntiens, Bulfinch Press.
1991: Art For Every Day, Edited By Carol Southern, Clarkson N. Potter Publishers.
1990: Sculpture, January/February.
1990: Professional Stained Glass, June.
1990: New York Times, July 12.
1990: Glasswork, August.
1990: Glass Art Magazine, January/February.
1989: Glass Art Magazine, September/October.
1989: Architectural Glass, Andrew Moore, Whitney Press.
1989: Architectural Digest, April.
1988: Stained Glass Quarterly, Vol. 83, #1, Spring.
1988: New York Times Magazine, May 1.
1988: New York Magazine, Winter.
1988: American Craft Magazine, June/July.
1988: America West, Vol. 3, #4, June.
1987: Dallas Morning News, November 24.
1987: Architecture, January.
1987: Architects' Journal, London, October.
1986: New Glass Review, Corning, Museum.
1986: Neues Glas, April.
1986: Building Design Journal, August.
1986: Architecture Minnesota, January/February.
1985: Neues Glas Magazine, Dusseldorf, January.
1985: Kunst And Kirche, Darmstadt, West Germany 33.
1985: Arts And Architecture, Vol. 4, No. 1, May.
1984: New York Magazine, Winter/Spring.
1984: New Glass Review, Corning Museum.
1984: Building Design And Construction, March.
1984: Architecture, February.
1984: Architecture California, June.
1984: Architectural Record, June.
1983: Neues Glas, June.
1983: American Craft, June/July.
1982: A.I.A. Journal, June.
1979: Architectural Stained Glass, By Brian Clarke, A.R. Books.

1979: Architectural Stained Glass, By Brian Clarke, A.R. Books.
 1977: Los Angeles Times, Home Magazine.
 1977: Art News, May.
 1976: New Glass, By Otto Rigan, San Francisco Book Company.

Awards

2007: Americans for the Arts Public Art Network 2007 Year in Review for TECOTOSH.
 2004: Special Achievement Award for the Seattle US Courthouse, US General Services Administration, Seattle, WA.
 2001: Architectural Foundation of Oregon Honored Citizen of the Year Award, Portland, Oregon.
 1999: Federal Highway Administration Excellence in Highway Design for "Grasshopper Bridge," Phoenix, AZ.
 1994: Design Citation, American Institute of Architects (New England Region), University Center, Rochester, MN.
 1989: Solomon Schechter Fine Art Award for Congregation Neveh Shalom Ark doors.
 1989: Governor's Commendation "The Making of Mainstreet: A Design Workshop for Government Camp".
 1985: Portland Beautification Association Honor Award for the Justice Center Great Window.
 1975: E.B. Webster Award, Contemporary Crafts Association, Portland, Oregon.
 1973: Michael Hattrell Award for study of stained glass in modern architecture, from Burleighfield Association, Buckinghamshire, England.

Grants

1984: National Endowment for the Arts Fellowship.
 1977: Western States Arts Foundation Fellowship.
 1976: National Endowment for the Arts Master Craftsman Grant.
 1975: Graham Foundation for Advanced Studies in the Fine Arts, grant for study in Germany with Ludwig Schaffrath.

Selected Professional Activities

2007-present: Member Urban Design Advisory Group, Columbia Crossing Project, Oregon/Washington.
 2005-present: Board of Trustees, Midland School, Los Olivos, California.
 2000-present: Chair, Edelman Lecture Committee, Pacific Northwest College of Art.
 1999-2004: Swallowtail School, Hillsboro, OR (k-8), Board Chair.
 1985-89: Metropolitan Arts Commissioner, Portland, Oregon. Founder, Public Art Advisory Committee.
 1983-86: Board of Trustees, American Craft Enterprises, Chairman.
 1982-86: Board of Trustees, American Craft Council, Vice-President.
 1975-79: Board of Trustees (Chair of Building Committee during construction of new campus), Oregon School of Arts and Crafts.
 1972-74: Board of Trustees, Hillside Center Artist's Cooperative.

Training

1975: Studied large architectural glass design with Ludwig Schaffrath, Aldsdorf, West Germany.
 1973: Studied stained glass design and technique with Patrick Reyntiens, Buckinghamshire, England.
 1969, 1973, 1975, 1982, 1987, 1993: Visited factories, installations and artists throughout Europe.
 1958-1963: Summer Apprenticeships Neutra & Alexander Architects, Los Angeles, California.

Lecturing and Teaching

1975-present: Featured speaker at conferences and meetings in USA, Europe, New Zealand, and Asia.
 1980-present: Master classes in USA, New Zealand, Mexico.

