



U-M Land Use Planning & Transportation System

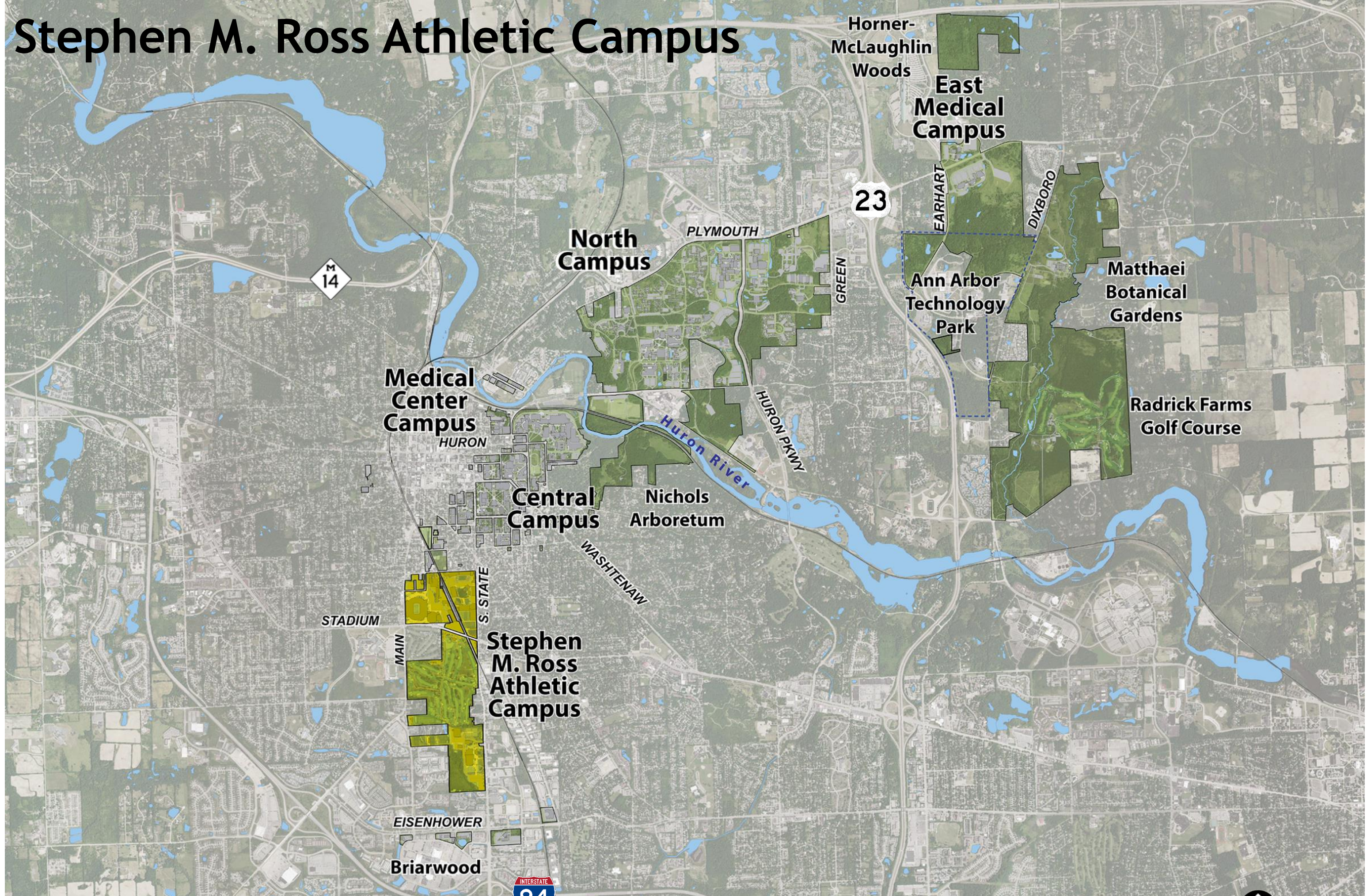
Transportation Commission

November 20, 2019

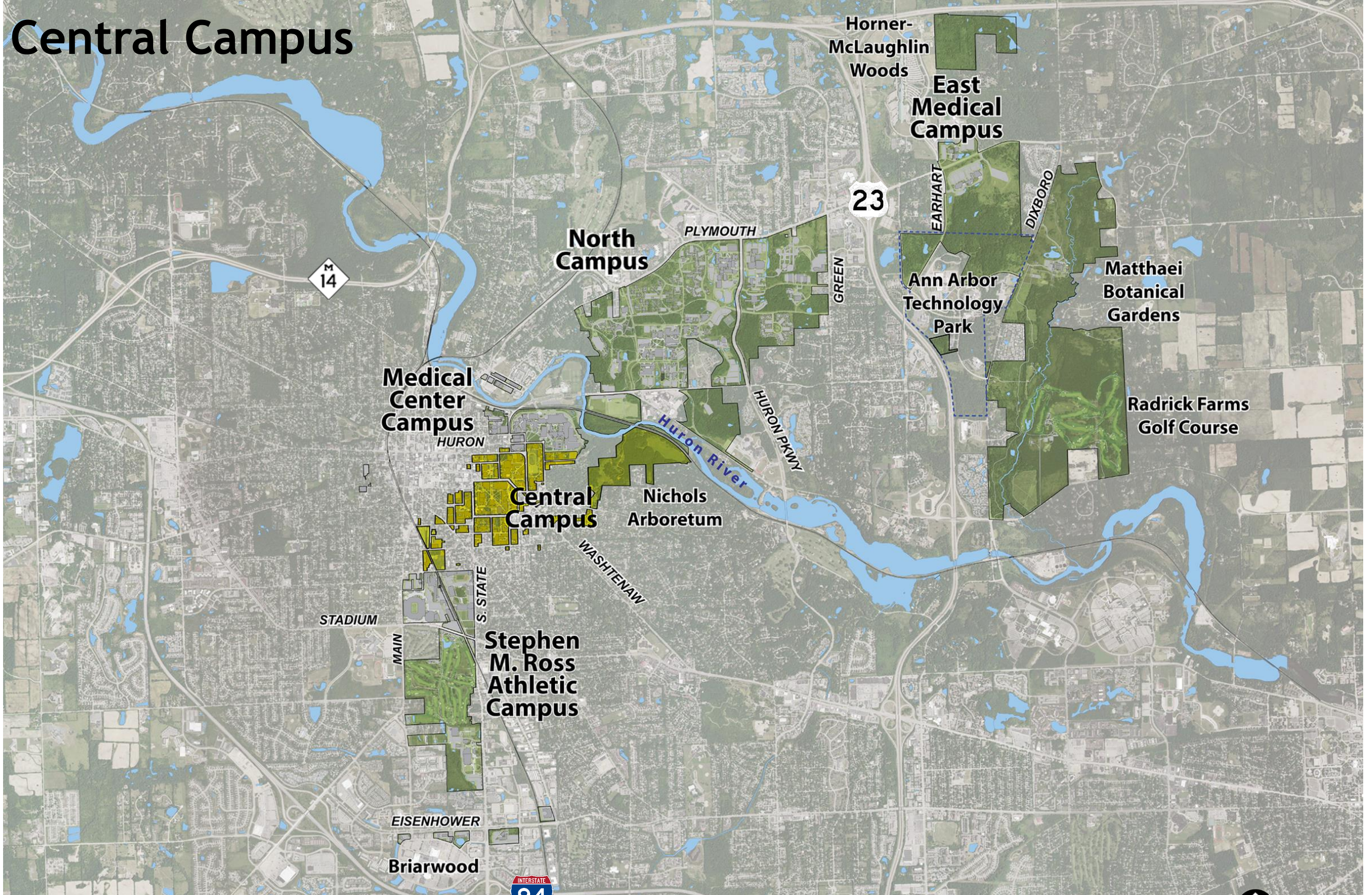
Land Use



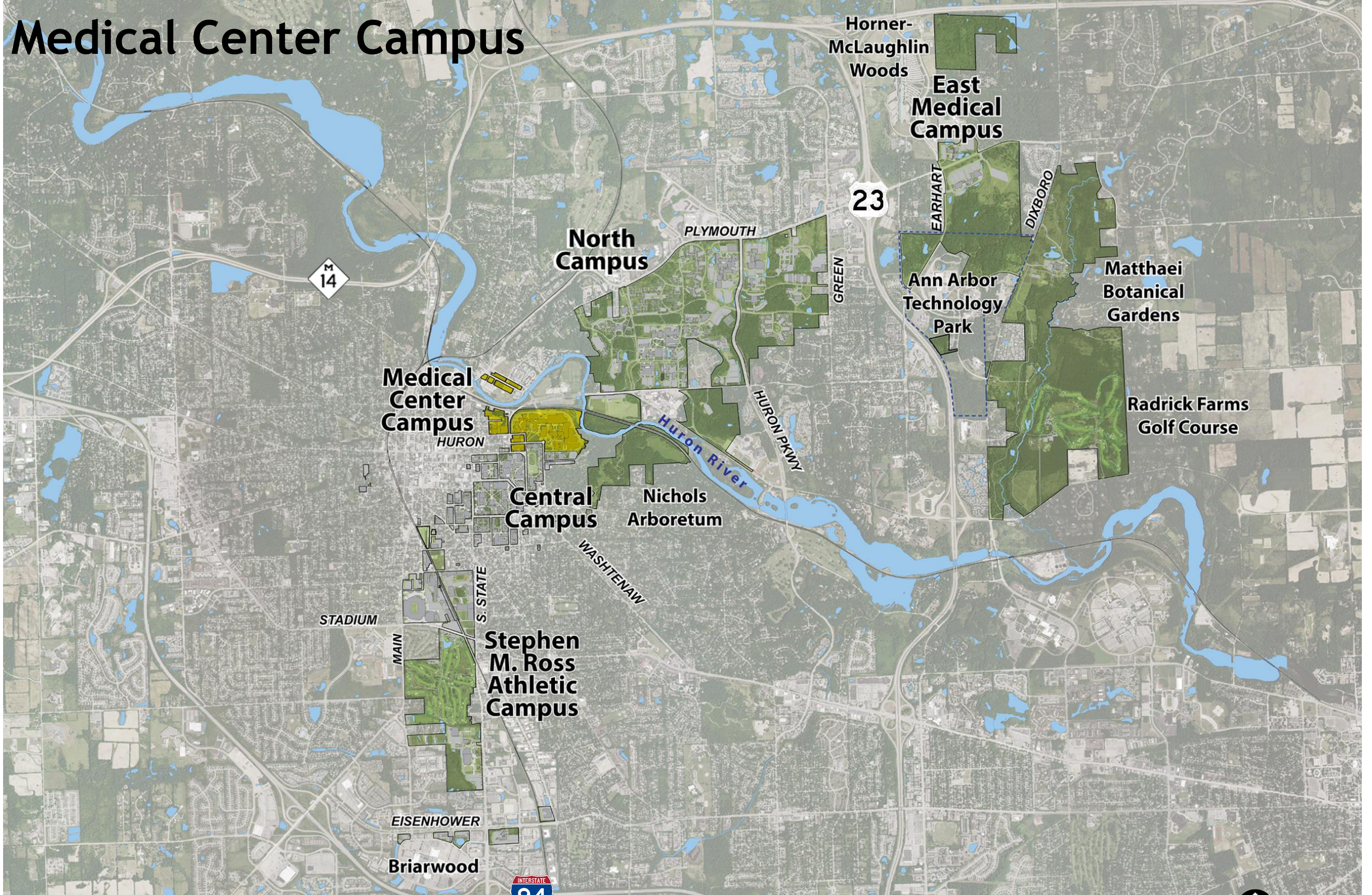
Stephen M. Ross Athletic Campus



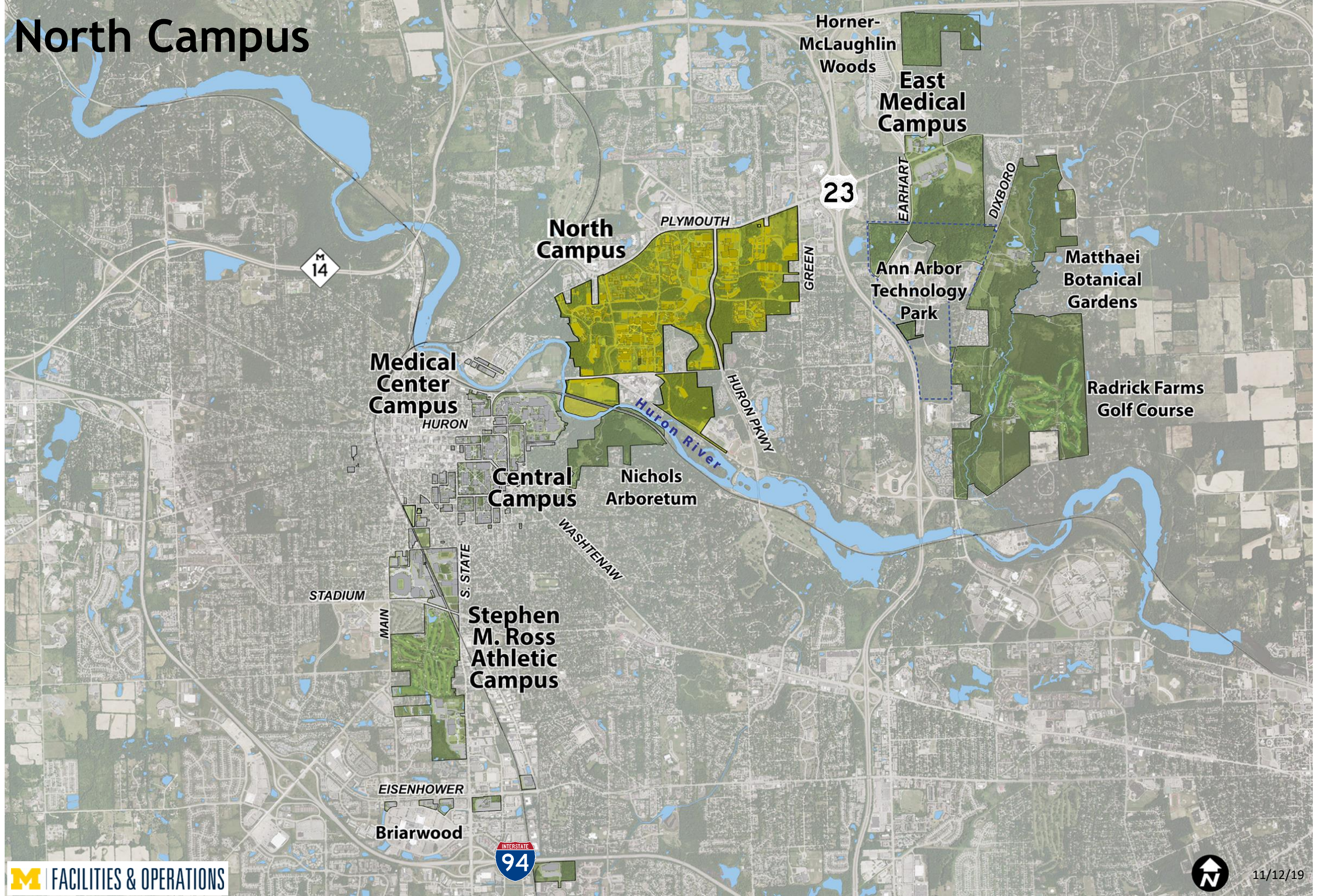
Central Campus



Medical Center Campus



North Campus

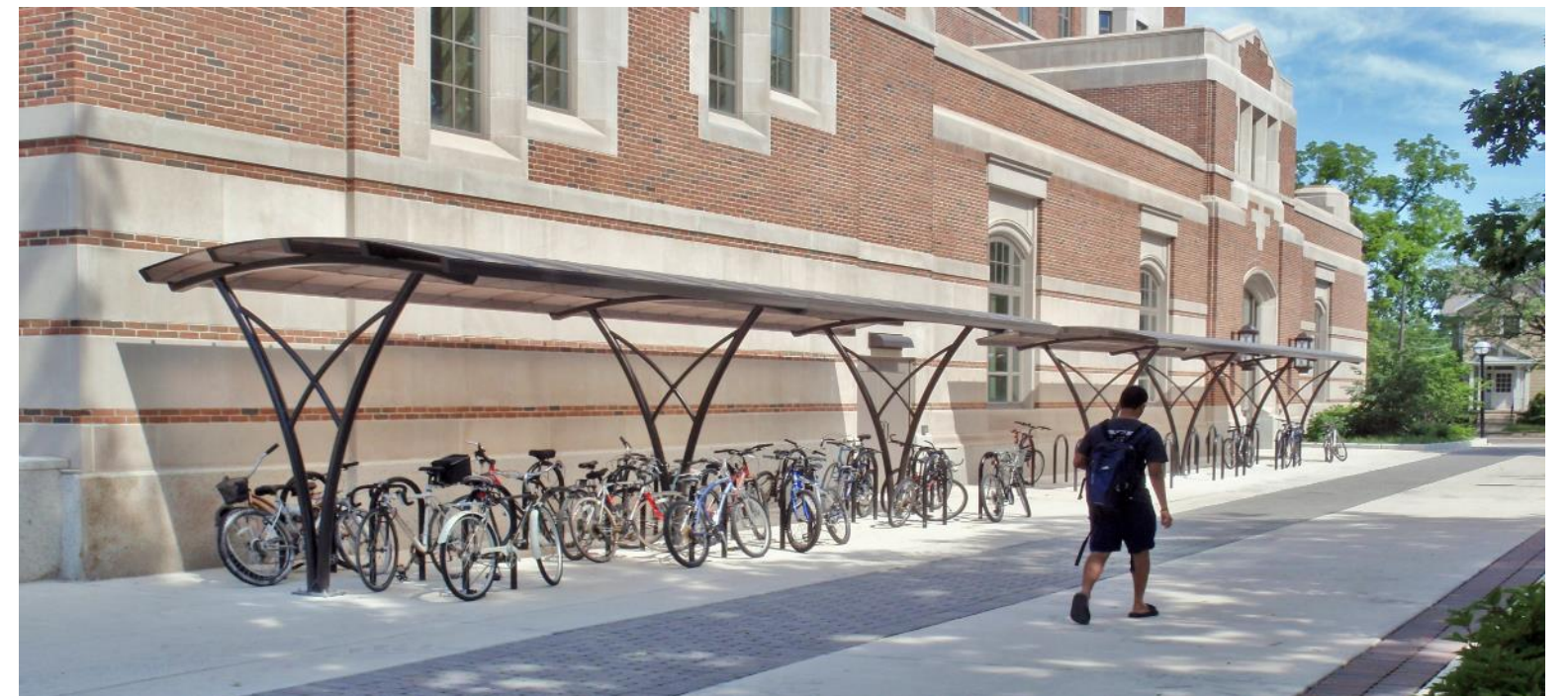


East Medical Campus



Parking

- Approximately 29,500 spaces
 - 16 structures
 - 100+ surface lots
 - 110 docks and service centers
- 8,000+ bike parking spaces



Parking Inventory

Parking Space Breakdown	
Permit	21,210
Patient	2,289
Visitor	1,548
Valet	462
Park & Ride	1,111
Business	467
Service	339
Reserved	574
Other	1,415
Total	29,415

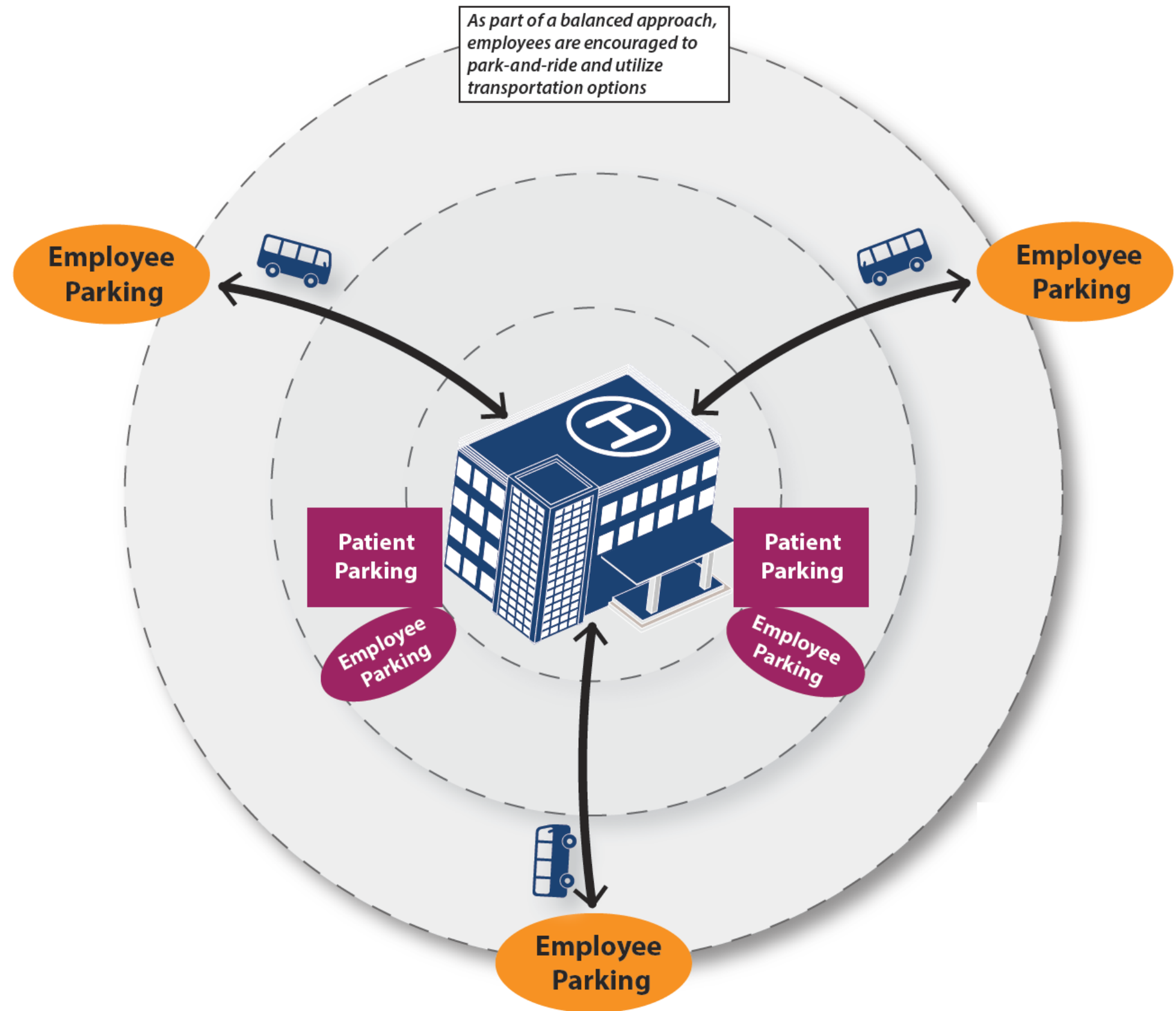
Spaces by Region	Gold	Blue	Yellow	Orange	Total
Central Campus	219	4,119		180	4,518
Medical Campus	893	4,796	218	465	6,372
NCRC	42	1,403	1,071		2,516
North Campus	39	1,291	735	2,534	4,601
Ross Athletic Campus	6	232	2,023	942	3,203
Grand Total	1,199	11,841	4,049	4,121	21,210

Active Permits (9/2019)	Gold	Blue	Yellow	Orange	Total
Faculty/Staff	1,878	16,934	7,900	3,138	29,850
Student			1,356	1,706	3,062

	Gold	Blue	Yellow	Orange
Ratio of Faculty/Staff to Permit Spaces (9/2019)	1.57	1.42	1.94	.72

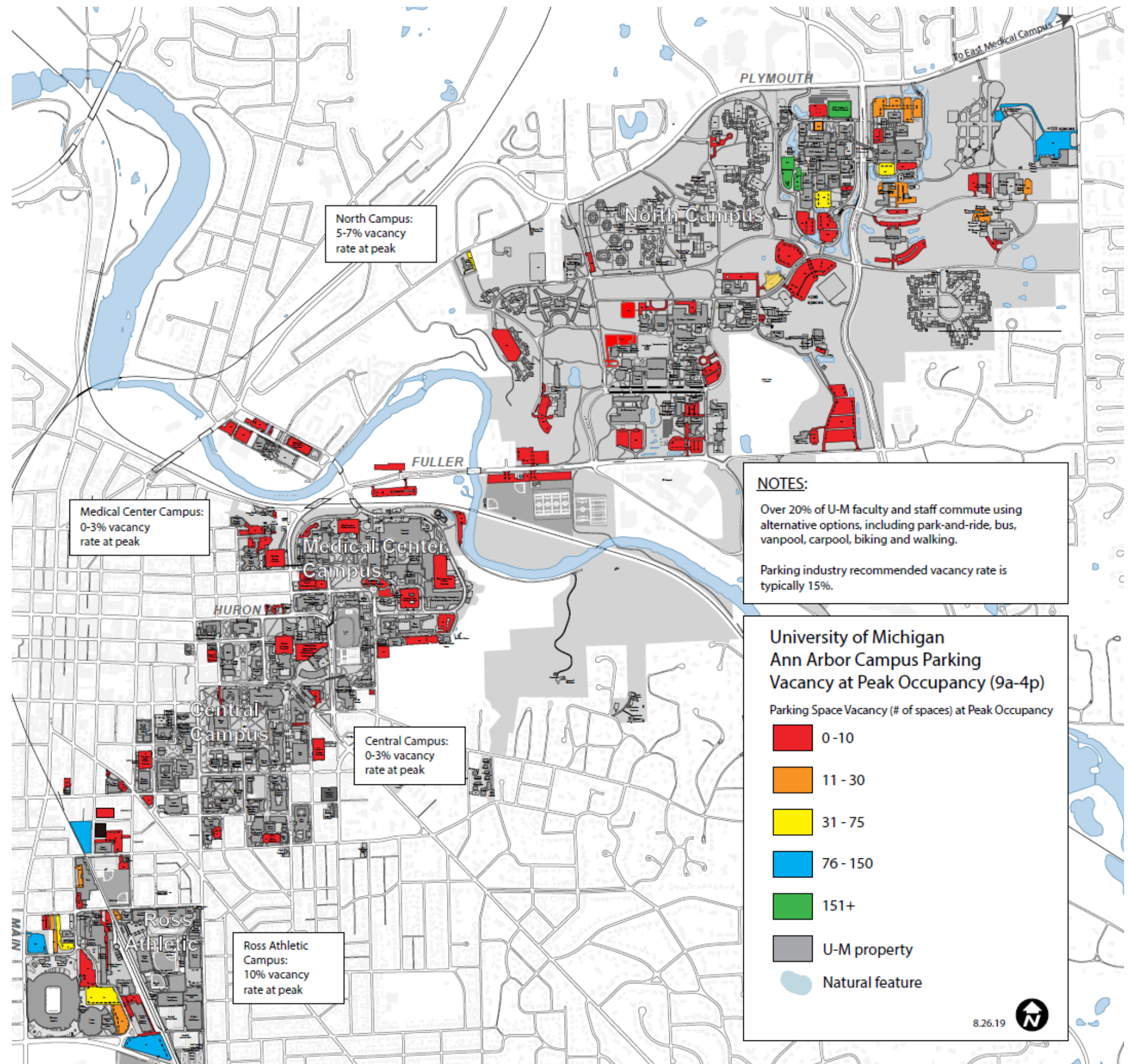
Balanced Approach

- Employees are encouraged to park-and-ride and utilize transportation options

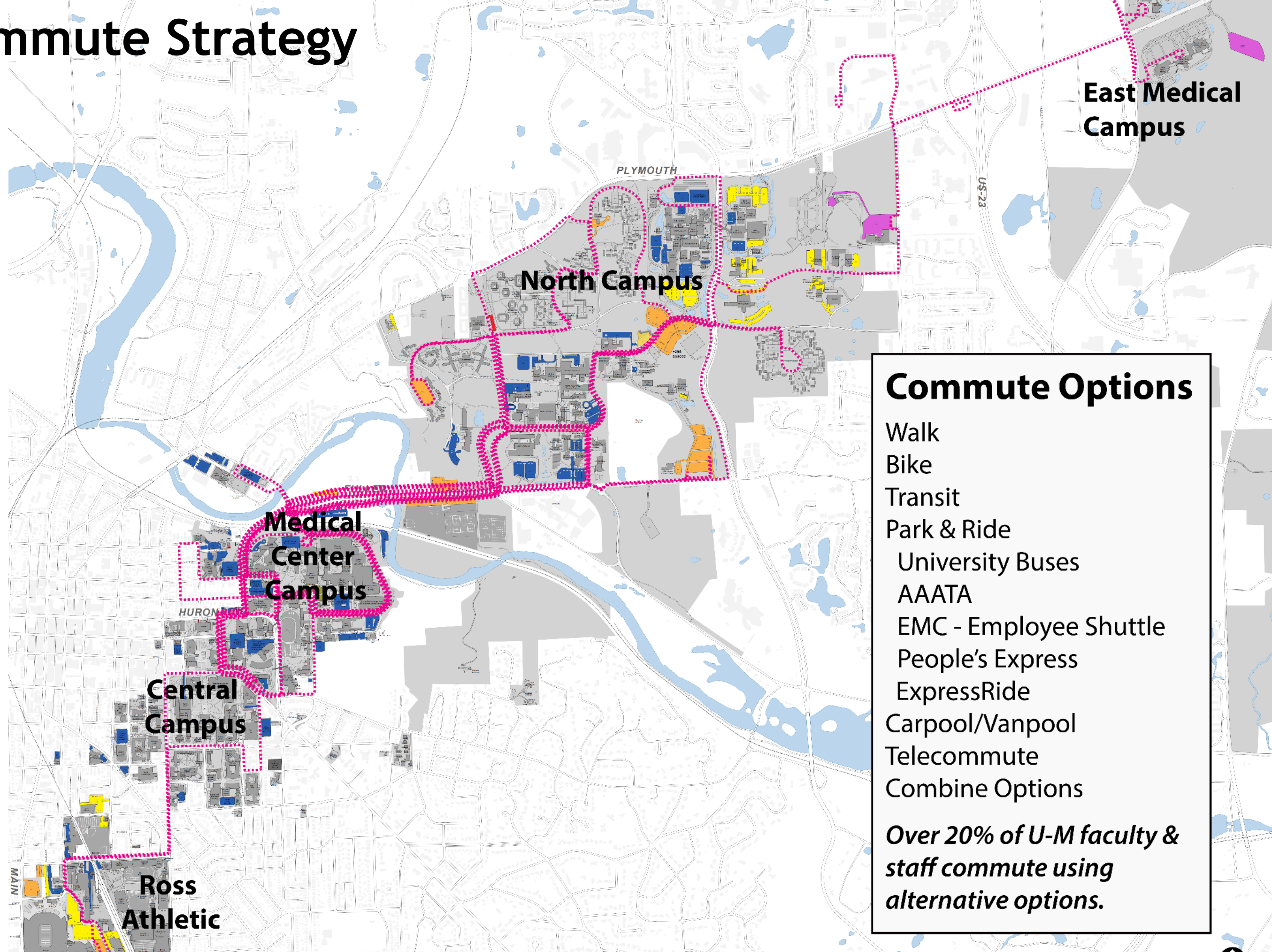


Parking Vacancy

- Over 20% of U-M faculty and staff commute using alternative options, including park-and-ride, bus, vanpool, carpool, biking and walking
- Parking industry recommended vacancy rate is typically 15%



Commute Strategy



Commute Options

- Walk
- Bike
- Transit
- Park & Ride
- University Buses
- AAATA
- EMC - Employee Shuttle
- People's Express
- ExpressRide
- Carpool/Vanpool
- Telecommute
- Combine Options

Over 20% of U-M faculty & staff commute using alternative options.



Transit Services

- 55 transit vehicles
- 150 operators and staff
- 12 fixed routes with approximately 8 million riders annually
- Paratransit with over 11,000 annual rides
- Charters (U-M departments and organizations)
- After-hours service – SafeRide
- Bio-Research shuttle

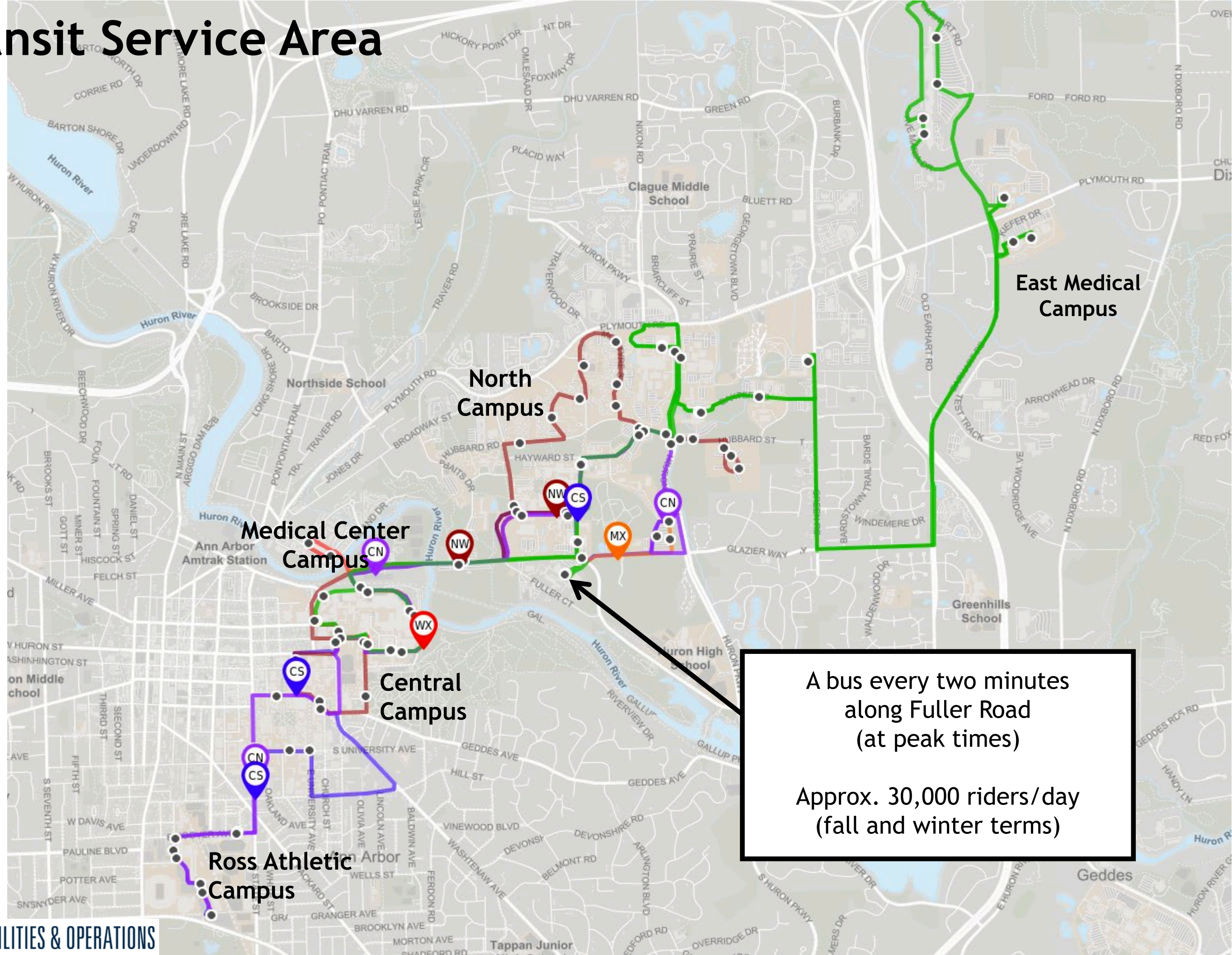


Transportation Options

- MRide (free rides on AAATA fixed routes)
 - Roughly 40% of AAATA ridership (>2.3M annual rides)
- ExpressRide (Chelsea and Canton)
- Park & Rides
- RideShare
 - Vanpools (95 vanpools, 560+ members)
 - Carpools
 - Car-sharing: GM Maven and Zipcar
- Bike Program
- Motorcycle/Mopeds
- E-Scooter Pilot
- Emergency Ride Home
- Electric Vehicle (EV) Charging



Transit Service Area



East Medical Campus

North Campus

Medical Center Campus

Central Campus

Ross Athletic Campus

A bus every two minutes along Fuller Road (at peak times)

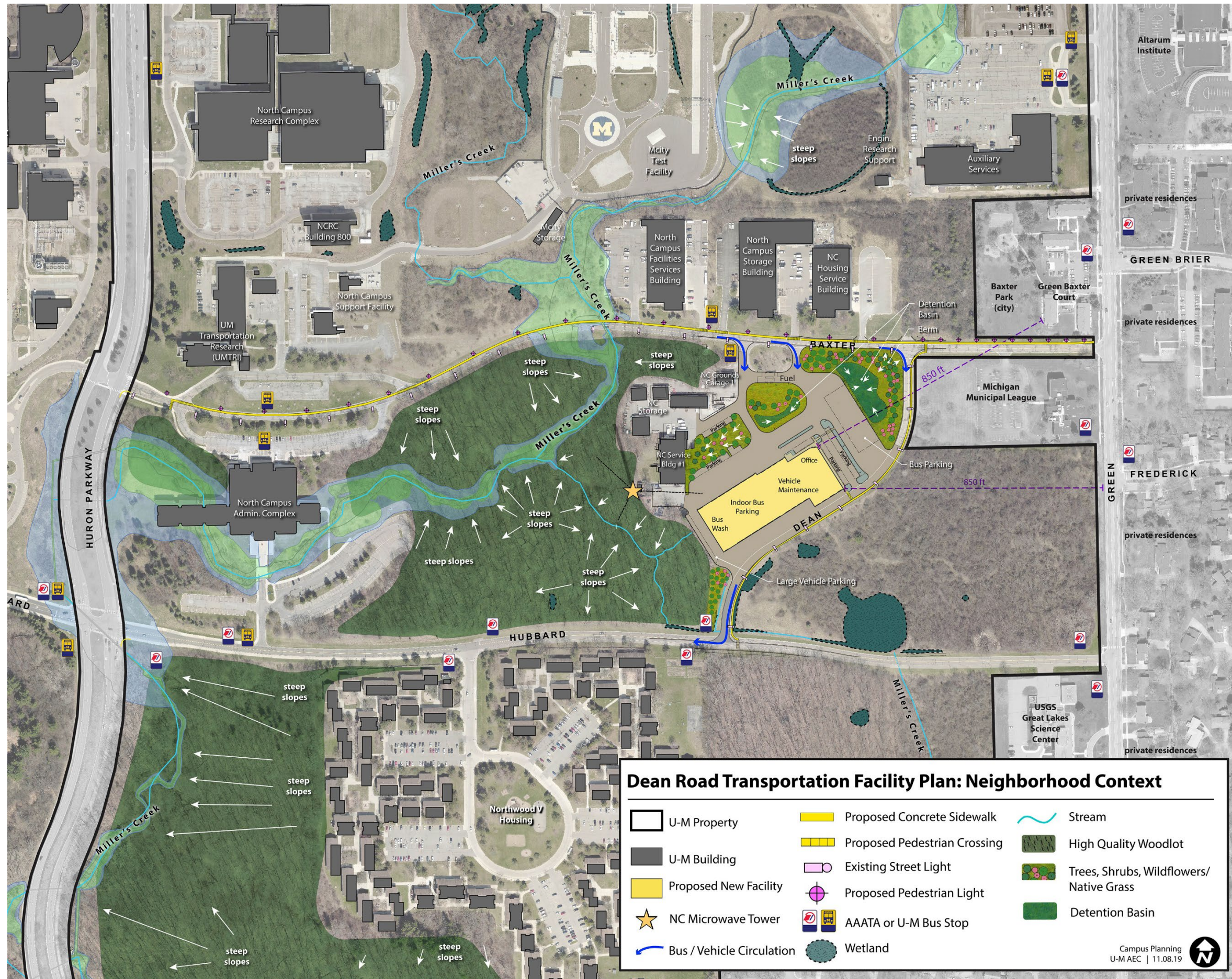
Approx. 30,000 riders/day (fall and winter terms)

Wall Street West Parking Structure



View looking west along Wall Street

Dean Road Transportation Facility



Campus Connectivity

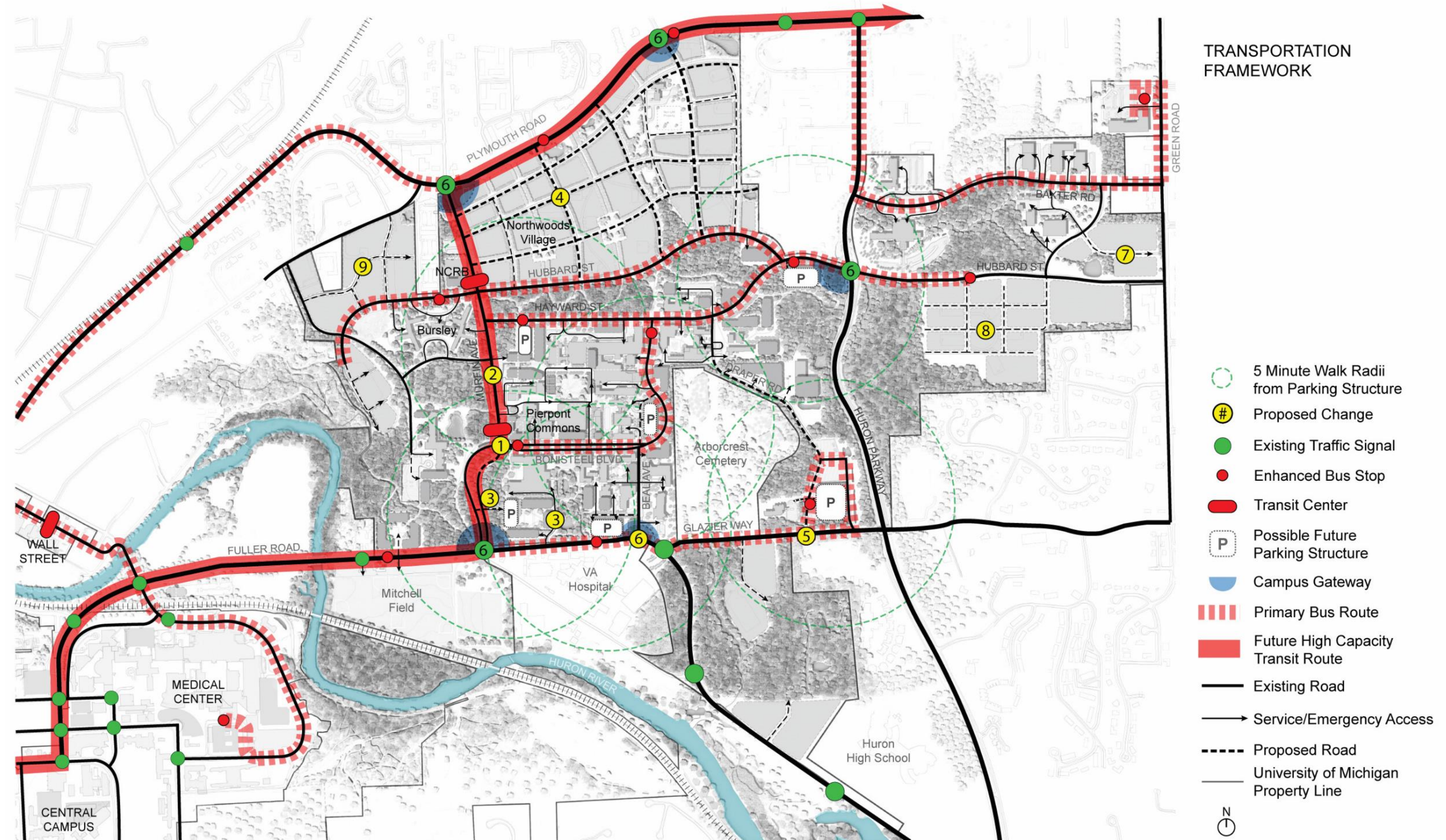
Bus passenger trips: 30,000/day
(up to 25 mins)



Questions?

APPENDIX

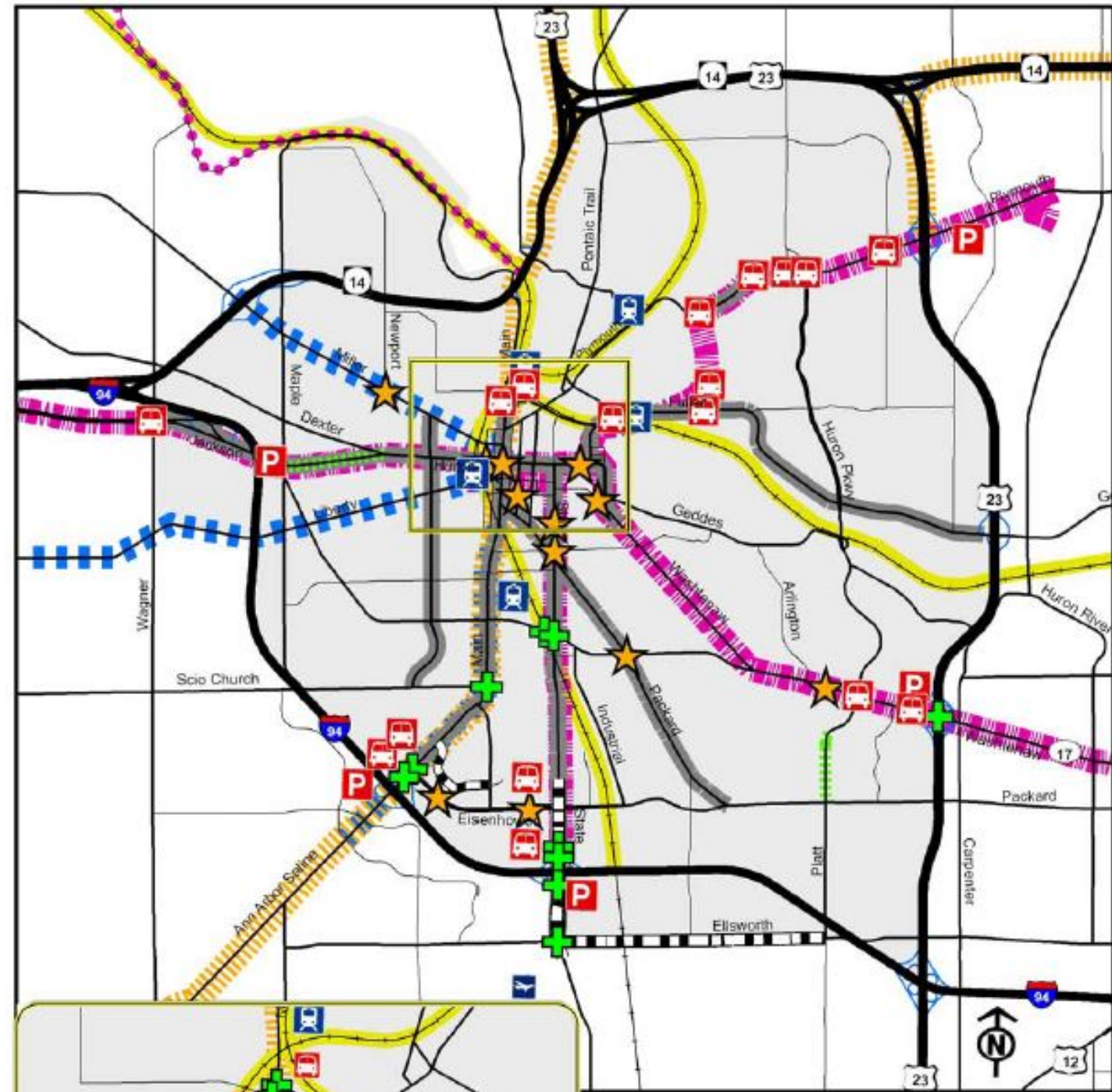
North Campus Transportation Framework - 2008



TRANSPORTATION FRAMEWORK

- 5 Minute Walk Radii from Parking Structure
- Proposed Change
- Existing Traffic Signal
- Enhanced Bus Stop
- Transit Center
- Possible Future Parking Structure
- Campus Gateway
- Primary Bus Route
- Future High Capacity Transit Route
- Existing Road
- Service/Emergency Access
- Proposed Road
- University of Michigan Property Line

City of Ann Arbor Transportation Master Plan Update - 2009



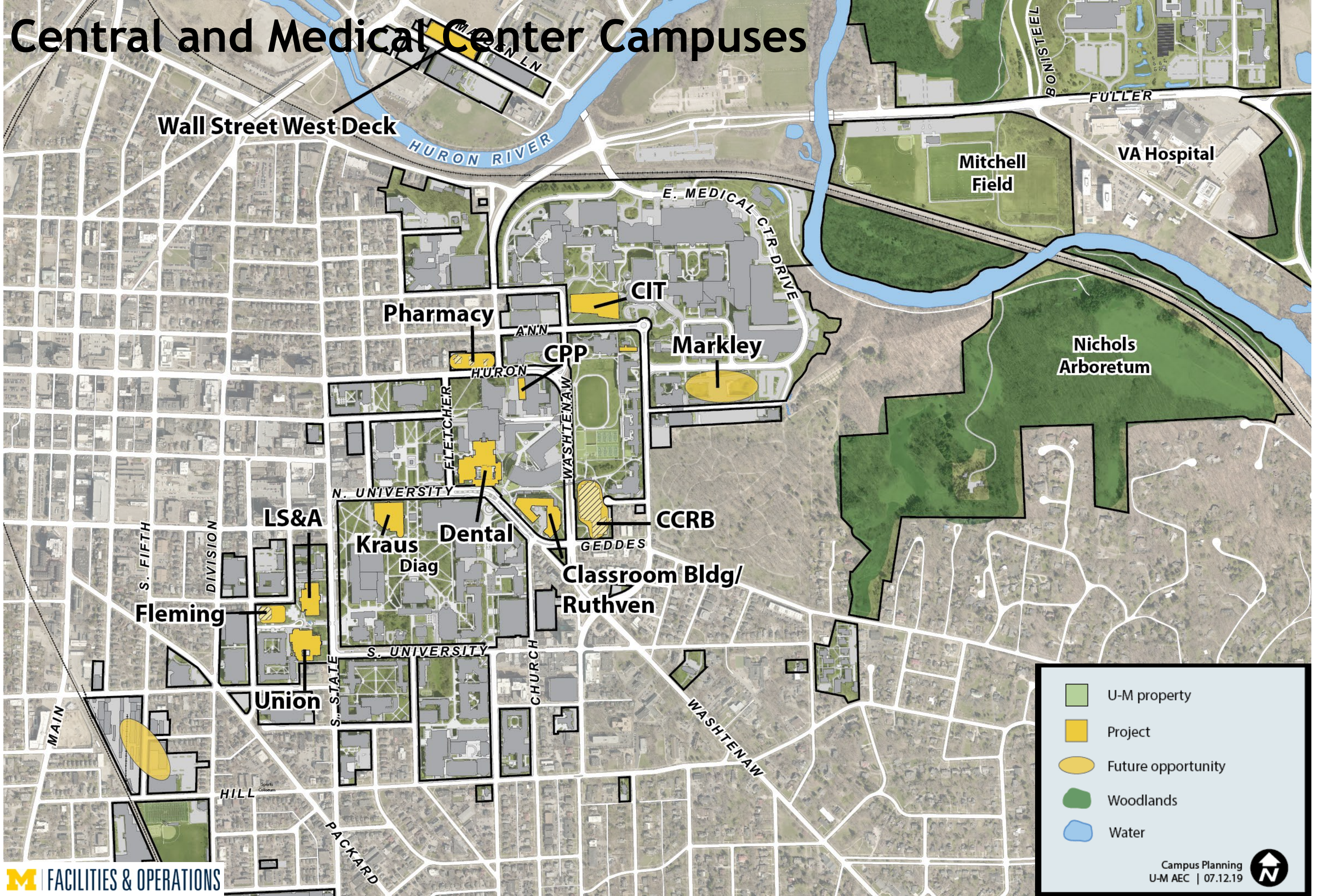
Final Recommendations

- Legend**
- Expand or New Park and Ride
 - New Train Station
 - Proposed Queue Jump Location
 - Safety Improvements
 - Intersection / Bridge Improvements
 - Corridor Improvements
 - Road Diet
 - Commuter Rail
 - Express Bus
 - Increase Transit Service
 - Signature Service
 - Expand Signal Technology
 - Border-to-Border Trail

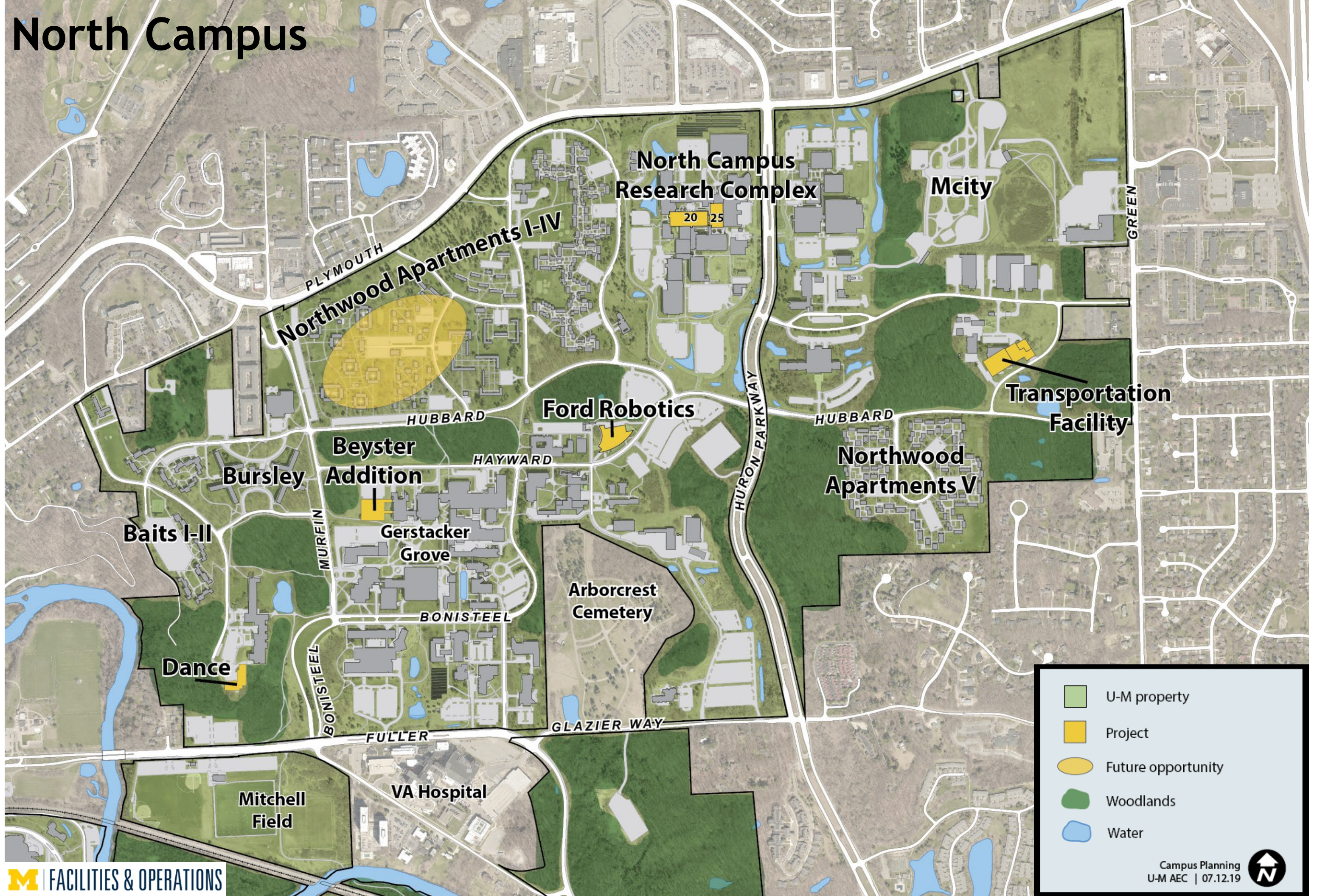
Connector History

- 2008 U-M North Campus Master Plan identified a potential high-capacity transit route connecting North Campus to EMC and downtown
- 2009 City of AA Trans MP Update identified a number of signature transit corridors, including Plymouth, Fuller and State Street
- 2010 U-M hosted a Transportation Technology Forum to support improved connectivity and explore the University's continued interest in a rapid transit system
- 2011 City, U-M, DDA and AAATA completed a feasibility study of advanced transit technology to serve the needs of the City and University
- 2012 AAATA Federal grant to study Connector concepts
 - Studied a rapid transit system that would connect downtown to world-class medical centers, Central Campus to North Campus, Plymouth Road to Main Street shops
- 2016 final report-Light rail was recommended
- Much higher than anticipated costs
- Efforts refocused to core segments of the corridor, which are the most congested and carry the highest volume of trips

Central and Medical Center Campuses



North Campus



-  U-M property
-  Project
-  Future opportunity
-  Woodlands
-  Water

