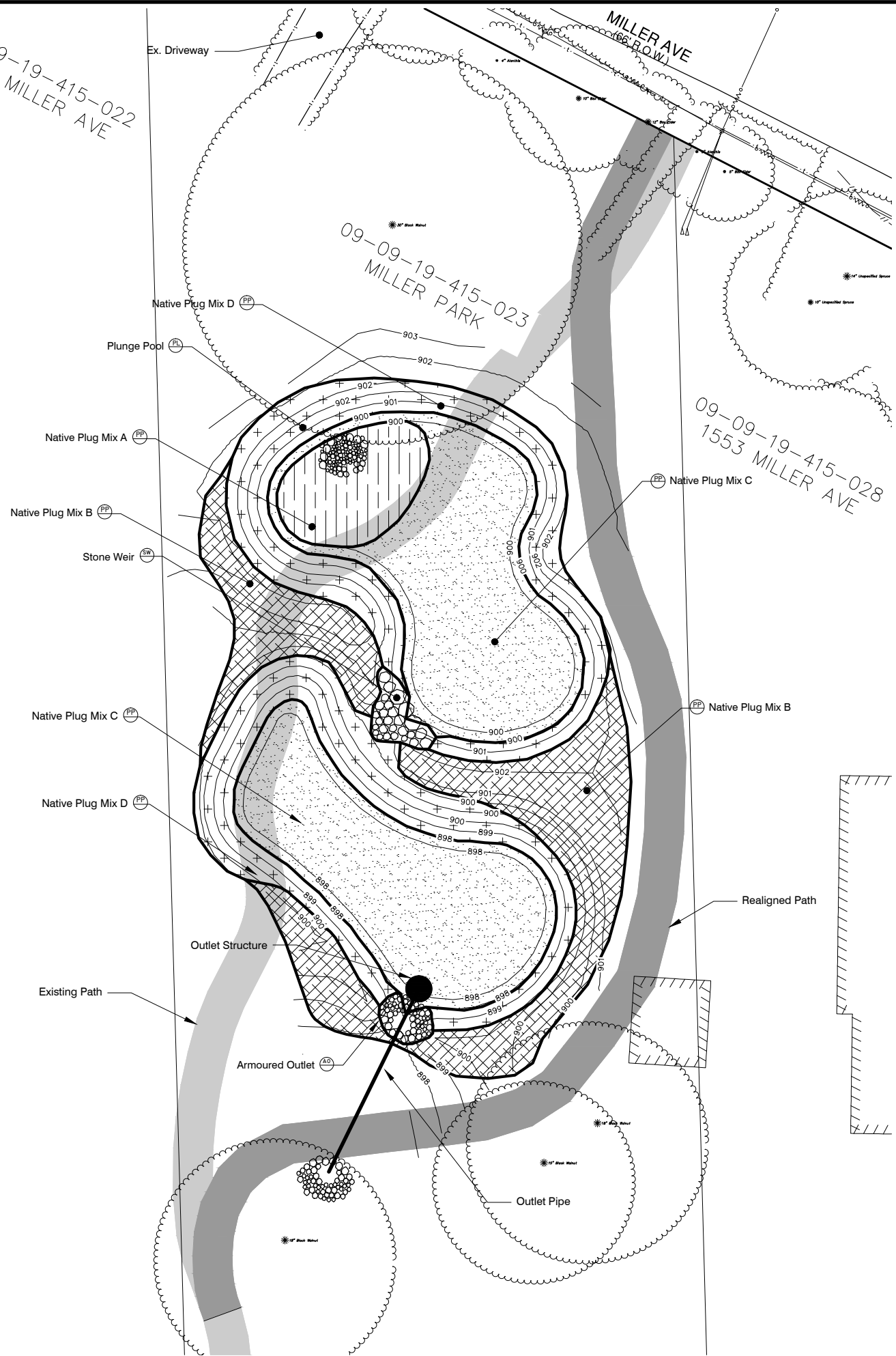


S:\Project Management\Design\2009-023 Miller Ave\Plan Production\Primary\2009023infiltration.dwg Dwg Created: 7-Aug-12 -- _a2 standard bw.stb -- Plot Date: 11-Sep-12

09-09-19-415-022
1575 MILLER AVE

09-09-19-415-023
MILLER PARK

09-09-19-415-028
1553 MILLER AVE



PLANTING SCHEDULE

Plug Mix	Planting Area in S.F.	Botanical Name	Common Name	Size	Spacing	Quantity	
A		<i>Iris virginica</i>	Blue Flag Iris	native plug	24" o.c.		
		<i>Anemone canadensis</i>	Canada Anemone	native plug	24" o.c.		
		<i>Carex vulpinoidea</i>	Fox Sedge	native plug	24" o.c.		
		<i>Eupatorium perfoliatum</i>	Boneset	native plug	24" o.c.		
		<i>Echinacea purpurea</i>	Purple Coneflower	native plug	24" o.c.		
		<i>Vernonia fasciculata</i>	Ironweed	native plug	24" o.c.		
B		<i>Panicum virgatum</i>	Switchgrass	native plug	24" o.c.		
		Upland Areas - Berms					
		<i>Sporobolus heterolepis</i>	Prairie Dropseed	native plug	24" o.c.		
		<i>Elymus canadensis</i>	Canada Wild Rye	native plug	24" o.c.		
		<i>Aquilegia canadensis</i>	Wild Columbine	native plug	24" o.c.		
		<i>Fragaria virginiana</i>	Wild Strawberry	native plug	24" o.c.		
		<i>Coreopsis lanceolata</i>	Sand Coreopsis	native plug	24" o.c.		
		<i>Asclepias tuberosa</i>	Butterfly Milkweed	native plug	24" o.c.		
		<i>Liatris aspera</i>	Rough Blazing Star	native plug	24" o.c.		
		<i>Potentilla simplex</i>	Common Cinquefoil	native plug	24" o.c.		
C		<i>Solidago rigida</i>	Stiff Goldenrod	native plug	24" o.c.		
		<i>Solidago speciosa</i>	Showy Goldenrod	native plug	24" o.c.		
		<i>Verbena stricta</i>	Hoary Vervain	native plug	24" o.c.		
		<i>Vernonia missurica</i>	Ironweed	native plug	24" o.c.		
		<i>Carya ovata</i>	Shagbark Hickory	native plug	24" o.c.		
		Bottom - Wet					
		<i>Deschampsia caespitosa</i>	Tufted Hair Grass	native plug	24" o.c.		
		<i>Iris virginica</i>	Blue Flag Iris	native plug	24" o.c.		
		<i>Carex vulpinoidea</i>	Fox Sedge	native plug	24" o.c.		
		<i>Fragaria virginiana</i>	Wild Strawberry	native plug	24" o.c.		
<i>Eupatorium perfoliatum</i>	Boneset	native plug	24" o.c.				
D		<i>Helenium autumnale</i>	Sneezeweed	native plug	24" o.c.		
		<i>Hibiscus moscheutos</i>	Rose Mallow	native plug	24" o.c.		
		<i>Physostegia virginiana</i>	Obedient Plant	native plug	24" o.c.		
		<i>Zizia aurea</i>	Golden Alexanders	native plug	24" o.c.		
		<i>Echinacea purpurea</i>	Purple Coneflower	native plug	24" o.c.		
		<i>Panicum virgatum</i>	Switchgrass	native plug	24" o.c.		
		<i>Aster novae angliae</i>	New England Aster	native plug	24" o.c.		
		<i>Andropogon gerardii</i>	Big Bluestem	native plug	24" o.c.		
		<i>Sorghastrum nutans</i>	Indian Grass	native plug	24" o.c.		
		Sides - Moist					
E		<i>Aster laevis</i>	Smooth Blue Aster	native plug	24" o.c.		
		<i>Allium cernuum</i>	Nodding Wild Onion	native plug	24" o.c.		
		<i>Baptisia australis</i>	Blue Wild Indigo	native plug	24" o.c.		
		<i>Coreopsis tripteris</i>	Tall Tickseed	native plug	24" o.c.		
		<i>Anemone canadensis</i>	Canada Anemone	native plug	24" o.c.		
		<i>Fragaria virginiana</i>	Wild Strawberry	native plug	24" o.c.		
		<i>Eupatorium perfoliatum</i>	Boneset	native plug	24" o.c.		
		<i>Helenium autumnale</i>	Sneezeweed	native plug	24" o.c.		
		<i>Rudbeckia hirta</i>	Black-Eyed Susan	native plug	24" o.c.		
		<i>Rudbeckia trilobum</i>	Brown-Eyed Susan	native plug	24" o.c.		
<i>Zizia aurea</i>	Golden Alexanders	native plug	24" o.c.				
F		<i>Symphoricarum novae angliae</i>	New England Aster	native plug	24" o.c.		
		<i>Andropogon gerardii</i>	Big Bluestem	native plug	24" o.c.		
		<i>Sorghastrum nutans</i>	Indian Grass	native plug	24" o.c.		

LEGEND

- STONE WEIR
- PLUNGE POOL
- ARMOURED OUTLET
- LIMIT OF GRADING & SILT FENCE
- EROSION CONTROL BLANKET
- NATIVE PLANT PLUG MIX A (PP)
- NATIVE PLANT PLUG MIX B (PP)
- NATIVE PLANT PLUG MIX C (PP)
- NATIVE PLANT PLUG MIX D (PP)
- TREE TO BE PLANTED (TP)

NOTES

1. SEED AND RESTORE ALL DISTURBED AREAS.

811 Know what's below. Call Before you dig.

CEC CHECKED

DPP DRAWN

DATE 08-10-12

GRADE INSPECTION PLAN REVIEW DESCRIPTION

REV. 1

CITY OF ANN ARBOR

PROJECT MANAGEMENT - PUBLIC SERVICES - CITY OF ANN ARBOR

MILLER AVENUE IMPROVEMENTS

MILLER PARK

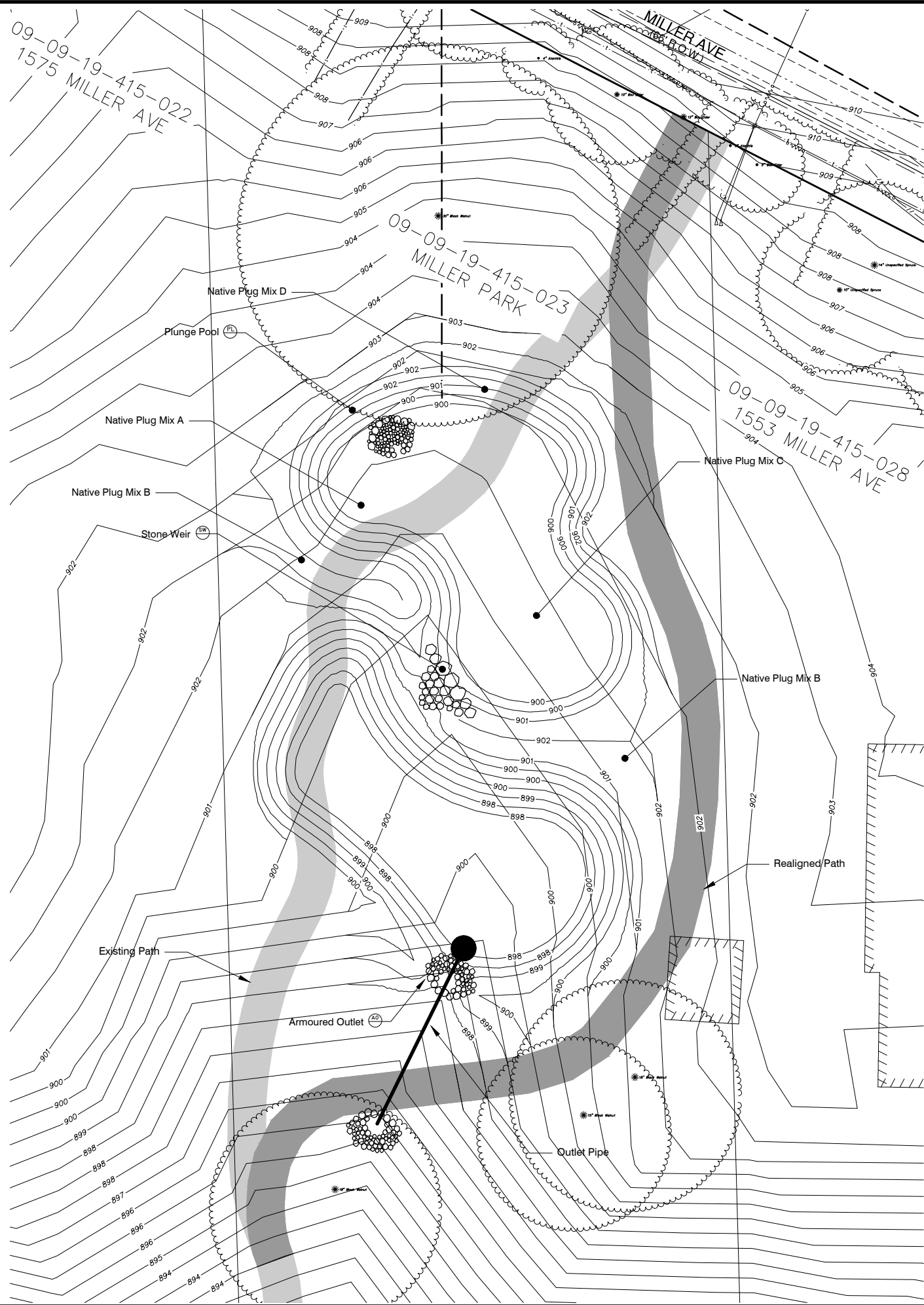
BIO RETENTION PLANTING PLAN

SCALE PLAN: 1" = 10'

DRAWING No. 2009023 - 91

SHEET No. 91 OF 95

S:\Project Management\Design\2009-023 Miller Ave\Plan Production\Primary\2009023infiltration.dwg Dwg Created: 7-Aug-12 - -_a2 standard bw.stb - Plot Date: 11-Sep-12



SOIL EROSION CONTROL NOTES

- GENERAL**
1. THE CONTRACTOR SHALL IMPLEMENT AND MAINTAIN THE SOIL EROSION CONTROL MEASURES AS SHOWN ON THE PLANS AT ALL TIMES DURING CONSTRUCTION ON THIS PROJECT. ANY MODIFICATIONS OR ADDITIONS TO THE SOIL EROSION CONTROL MEASURES DUE TO CONSTRUCTION OR CHANGED CONDITIONS SHALL BE COMPLIED WITH AS REQUIRED OR DIRECTED BY THE OWNER, PROJECT ENGINEER, OR THE CITY OF ANN ARBOR.
 2. ALL SOIL EROSION AND SEDIMENTATION CONTROL WORK SHALL CONFORM TO THE PERMIT REQUIREMENTS OF THE CITY OF ANN ARBOR, CHAPTER 63, AND THE LAWS OF THE STATE OF MICHIGAN.
 3. DAILY OR AFTER STORM EVENT INSPECTIONS SHALL BE MADE BY THE CONTRACTOR. PERIODIC INSPECTIONS MAY BE MADE BY THE OWNER/PROJECT ENGINEER TO DETERMINE THE EFFECTIVENESS OF EROSION AND SEDIMENTATION CONTROL MEASURES. ANY NECESSARY CORRECTIONS SHALL BE MADE WITHOUT DELAY, AND WITHOUT ADDITIONAL COST TO THE OWNER.
 4. EROSION AND SEDIMENTATION FROM WORK ON THE SITE SHALL BE CONTAINED ON THE SITE AND NOT BE ALLOWED TO COLLECT ON ANY OFF-SITE AREAS OR WATERWAYS.
 5. ALL MUD/DIRT TRACKED ONTO ROADS FROM THE SITE DUE TO CONSTRUCTION, SHALL BE PROMPTLY REMOVED BY THE CONTRACTOR. IF SO ORDERED, THE CONTRACTOR SHALL EMPLOY A MECHANICAL STREET SWEEPER AT NO ADDITIONAL COST TO THE OWNER.
 6. RESTORATION OF ALL DISTURBED AREAS, INCLUDING PLACEMENT OF TOPSOIL, SEED, FERTILIZER AND MULCH AND/OR SOD SHALL BE DONE WITHIN 5 DAYS OF THE COMPLETION OF FINAL GRADE
 7. CONSTRUCTION OPERATIONS SHALL BE SCHEDULED AND PERFORMED SO THAT PREVENTATIVE SOIL EROSION CONTROL MEASURES ARE IN PLACE PRIOR TO EXCAVATION IN CRITICAL AREAS AND TEMPORARY STABILIZATION MEASURES ARE IN PLACE IMMEDIATELY FOLLOWING BACKFILLING OPERATIONS.
 8. SPECIAL PRECAUTIONS WILL BE TAKEN IN THE USE OF CONSTRUCTION EQUIPMENT TO PREVENT SITUATIONS THAT PROMOTE EROSION.
 9. PROPER DUST CONTROL SHALL BE MAINTAINED DURING CONSTRUCTION BY USE OF WATER TRUCKS AND/OR CHLORIDE AS REQUIRED.
 10. THE CONTRACTOR SHALL BE RESPONSIBLE FOR MAINTAINING ALL TEMPORARY SOIL EROSION CONTROL MEASURES AND REMOVAL OF SOME UPON AUTHORIZED COMPLETION OF THE PROJECT. COMPLETION OF PROJECT WILL NOT BE AUTHORIZED UNTIL ALL SITE WORK AND UTILITY CONSTRUCTION IS COMPLETE AND ALL SOILS ARE STABILIZED.
 11. THE CONTRACTOR SHALL NOT GRADE INTO ADJACENT PROPERTIES. SILT FENCE SHALL BE INSTALLED AND MAINTAINED TO PREVENT GRADING, EROSION AND SEDIMENTATION INTO THEM.
 12. TREE PROTECTION FENCING MUST REMAIN INTACT UNTIL RESTORATION OF THE SITE IS COMPLETE.
- SEQUENCE OF EROSION CONTROL MEASURES:**
1. INSTALL SILT FENCE, TREE PROTECTION FENCING AND INLET FILTERS ON EXISTING STORM INLETS PRIOR TO ANY CLEARING OR EARTH MOVING OPERATION.
 2. INSTALL INLET FILTERS IMMEDIATELY FOLLOWING INSTALLATION OF PROPOSED STORM

- DRAINAGE SYSTEM.**
3. CONTINUALLY MAINTAIN EROSION AND SEDIMENTATION CONTROL MEASURES, AS REQUIRED TO ALLOW DRAINAGE AND SEDIMENT REMOVAL. REMOVE ANY ACCUMULATED SEDIMENT.
 4. STRIP AND CLEAR - MAINTAIN EROSION CONTROL MEASURES AROUND TEMPORARY STOCK PILES.
 5. ROUGH GRADE
 6. INSTALL STORMWATER MANAGEMENT SYSTEM.
 7. SEED AND INSTALL EROSION CONTROL BLANKET IN ALL BIORETENTION PONDING ZONES.
 8. REFER TO PLANTING PLAN FOR PERMANENT SITE STABILIZATION - PLUG THROUGH EROSION CONTROL BLANKET.
 9. CONNECT STORMWATER MANAGEMENT SYSTEM.
 9. ENSURE ALL SOIL IS STABILIZED. REMOVE ALL TEMPORARY SOIL EROSION CONTROL MEASURES.
- TEMPORARY SEEDING:**
1. SEED IN ACCORDANCE WITH PROJECT DRAWINGS AND SPECIFICATIONS.
 2. ANY DISTURBED AREA NOT PAVED, SEEDED, MULCHED, SODDED OR BUILT UPON BY NOVEMBER 15TH OR JUNE 30TH IS TO BE TEMPORARILY STABILIZED PER SPECIFICATIONS.
- ROADS:**
1. DURING CONSTRUCTION, ALL ROADS SHALL BE PROTECTED FROM UNVEGETATED AREAS WASHING ONTO ROAD SURFACE BY PLACEMENT OF SILT FENCE BEHIND CURB OR A 10 FOOT WIDE STRAW MULCH BANK BEHIND CURB OR OTHER APPROVED METHOD AND/OR AS SHOWN ON THE PLANS.

2. DURING CONSTRUCTION OF ANY PORTION OF THE PROJECT, ROADS SHALL BE MAINTAINED FREE OF DIRT, SILT AND CONSTRUCTION DEBRIS.
- CATCH BASIN/MANHOLE PROTECTION:**
1. PROTECT STORM SEWER CATCH BASINS WITH APPROVED INLET FILTERS.

LEGEND

- EXISTING TREE TO TRANSPLANT
- STONE WEIR
- PLUNGE POOL
- ARMoured OUTLET
- LIMIT OF GRADING & SILT FENCE
- EROSION CONTROL BLANKET

PROJECT MANAGEMENT - PUBLIC SERVICES - CITY OF ANN ARBOR

MILLER AVENUE IMPROVEMENTS

MILLER PARK

BIO RETENTION GRADING PLAN

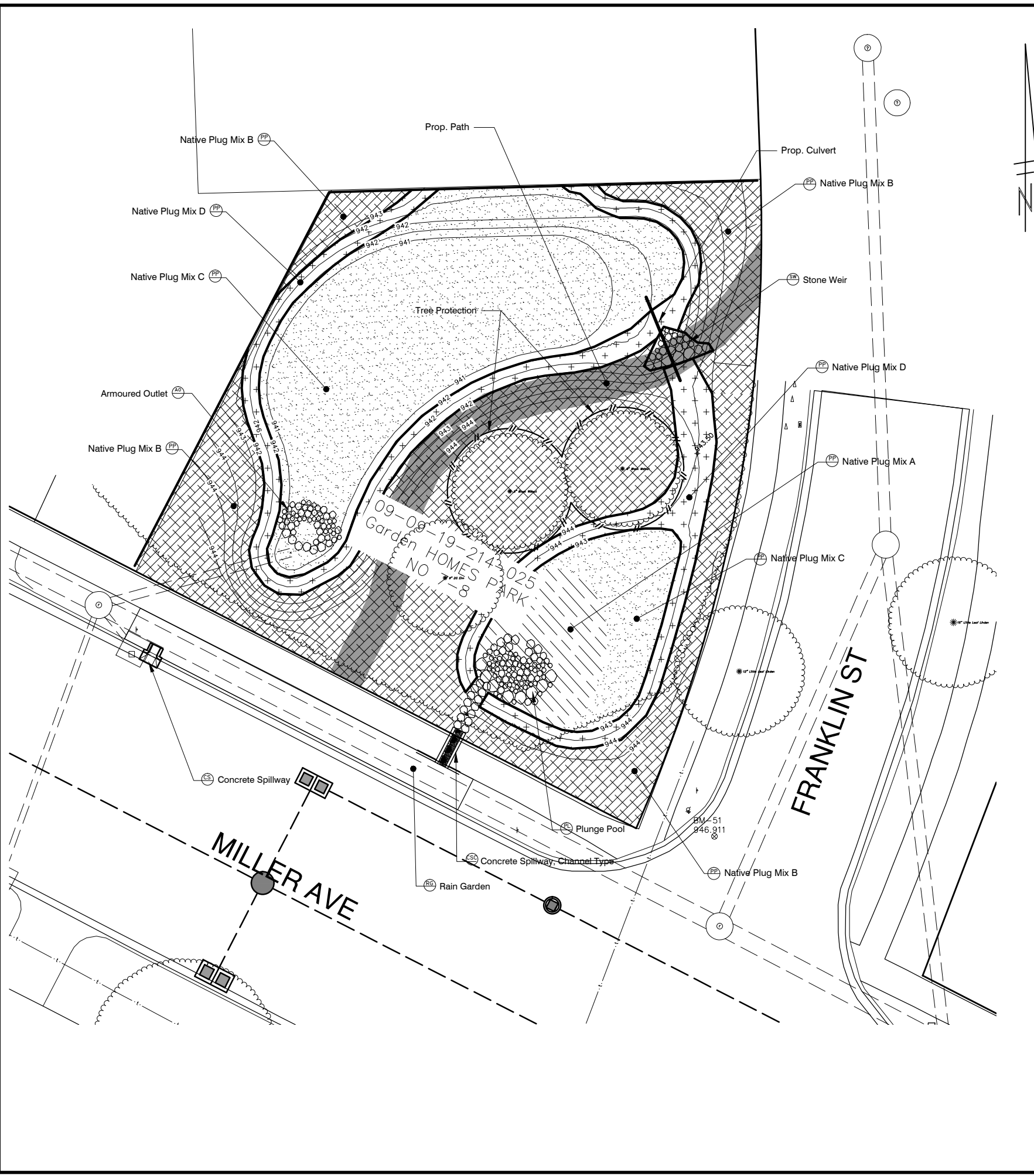
811
Know what's below.
Call before you dig.

1	GRADE INSPECTION PLAN REVIEW	DESCRIPTION	DATE	DRAWN	CEC	CHECKED
			08-10-12			

SCALE PLAN: 1" = 10'

DRAWING No. **2009023 - 92**

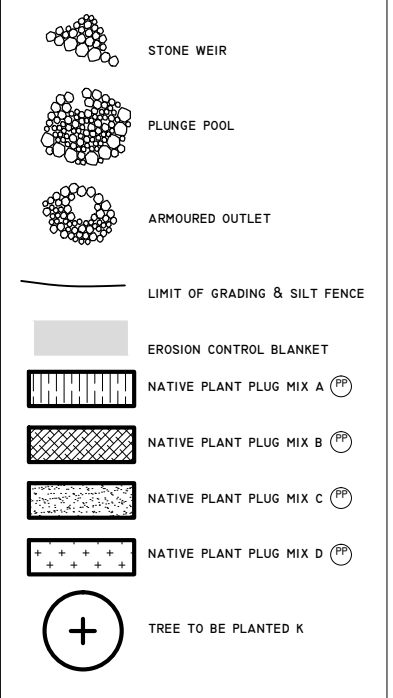
SHEET No. **92 OF 95**



PLANTING SCHEDULE


Plug Mix	Planting Area in S.F.	Inlet - Wet				
		Botanical Name	Common Name	Size	Spacing	Quantity
A		<i>Iris virginica</i>	Blue Flag Iris	native plug	24" o.c.	
		<i>Anemone canadensis</i>	Canada Anemone	native plug	24" o.c.	
		<i>Carex vulpinoidea</i>	Fox Sedge	native plug	24" o.c.	
		<i>Eupatorium perfoliatum</i>	Boneset	native plug	24" o.c.	
		<i>Echinacea purpurea</i>	Purple Coneflower	native plug	24" o.c.	
		<i>Vernonia fasciculata</i>	Ironweed	native plug	24" o.c.	
		<i>Panicum virgatum</i>	Switchgrass	native plug	24" o.c.	
		Upland Areas - Berms				
Plug Mix	Planting Area in S.F.	Bottom - Wet				
		Botanical Name	Common Name	Size	Spacing	Quantity
B		<i>Sporobolus heterolepis</i>	Prairie Dropseed	native plug	24" o.c.	
		<i>Elymus canadensis</i>	Canada Wild Rye	native plug	24" o.c.	
		<i>Aquilegia canadensis</i>	Wild Columbine	native plug	24" o.c.	
		<i>Fragaria virginiana</i>	Wild Strawberry	native plug	24" o.c.	
		<i>Coreopsis lanceolata</i>	Sand Coreopsis	native plug	24" o.c.	
		<i>Asclepias tuberosa</i>	Butterfly Milkweed	native plug	24" o.c.	
		<i>Liatris aspera</i>	Rough Blazing Star	native plug	24" o.c.	
		<i>Potentilla simplex</i>	Common Cinquefoil	native plug	24" o.c.	
		<i>Solidago rigida</i>	Stiff Goldenrod	native plug	24" o.c.	
		<i>Solidago speciosa</i>	Showy Goldenrod	native plug	24" o.c.	
		<i>Verbena stricta</i>	Hoary Vervain	native plug	24" o.c.	
		<i>Vernonia missurica</i>	Ironweed	native plug	24" o.c.	
		<i>Carya ovata</i>	Shagbark Hickory	native plug	24" o.c.	
Plug Mix	Planting Area in S.F.	Sides - Moist				
		Botanical Name	Common Name	Size	Spacing	Quantity
C		<i>Deschampsia caespitosa</i>	Tufted Hair Grass	native plug	24" o.c.	
		<i>Iris virginica</i>	Blue Flag Iris	native plug	24" o.c.	
		<i>Carex vulpinoidea</i>	Fox Sedge	native plug	24" o.c.	
		<i>Carex muskingumensis</i>	Muskingum Sedge	native plug	24" o.c.	
		<i>Fragaria virginiana</i>	Wild Strawberry	native plug	24" o.c.	
		<i>Eupatorium perfoliatum</i>	Boneset	native plug	24" o.c.	
		<i>Helenium autumnale</i>	Sneezeweed	native plug	24" o.c.	
		<i>Hibiscus moscheutos</i>	Rose Mallow	native plug	24" o.c.	
		<i>Physostegia virginiana</i>	Obedient Plant	native plug	24" o.c.	
		<i>Zizia aurea</i>	Golden Alexanders	native plug	24" o.c.	
		<i>Echinacea purpurea</i>	Purple Coneflower	native plug	24" o.c.	
		<i>Panicum virgatum</i>	Switchgrass	native plug	24" o.c.	
D		<i>Aster laevis</i>	Smooth Blue Aster	native plug	24" o.c.	
		<i>Allium cernuum</i>	Nodding Wild Onion	native plug	24" o.c.	
		<i>Baptisia australis</i>	Blue Wild Indigo	native plug	24" o.c.	
		<i>Coreopsis tripteris</i>	Tall Tickseed	native plug	24" o.c.	
		<i>Anemone canadensis</i>	Canada Anemone	native plug	24" o.c.	
		<i>Fragaria virginiana</i>	Wild Strawberry	native plug	24" o.c.	
		<i>Eupatorium perfoliatum</i>	Boneset	native plug	24" o.c.	
		<i>Helenium autumnale</i>	Sneezeweed	native plug	24" o.c.	
		<i>Rudbeckia hirta</i>	Black-Eyed Susan	native plug	24" o.c.	
		<i>Rudbeckia trilobum</i>	Brown-Eyed Susan	native plug	24" o.c.	
		<i>Zizia aurea</i>	Golden Alexanders	native plug	24" o.c.	
		<i>Symphoricarpos novae angliae</i>	New England Aster	native plug	24" o.c.	
<i>Andropogon gerardii</i>	Big Bluestem	native plug	24" o.c.			
<i>Sorghastrum nutans</i>	Indian Grass	native plug	24" o.c.			

LEGEND



NOTES

1. SEED AND RESTORE ALL DISTURBED AREAS.

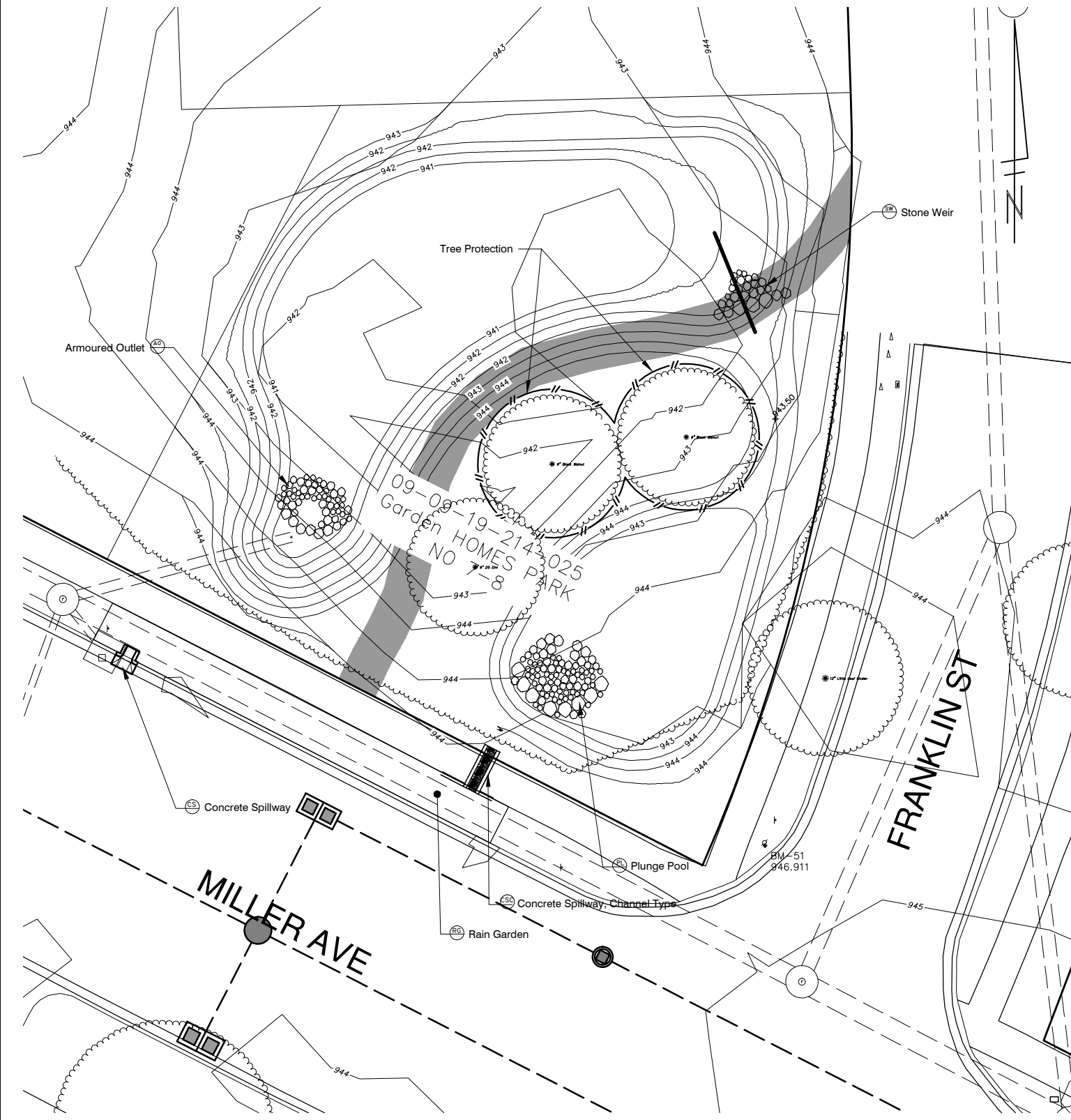

 Know what's below.
 Call Before you dig.

CEC	DPP	DATE	CHECKED	DRAWN
1	GRADE INSPECTION	PLAN REVIEW	DESCRIPTION	REV.

PROJECT MANAGEMENT - PUBLIC SERVICES - CITY OF ANN ARBOR
 MILLER AVENUE IMPROVEMENTS
 GARDEN HOMES PARK
 BIO RETENTION PLANTING PLAN

SCALE PLAN: 1" = 10'
 DRAWING No. 2009023 - 93
 SHEET No. 93 OF 95

S:\Project Management\Design\2009-023 Miller Ave\Plan Production\Primary\2009023infiltration.dwg Dwg Created: 7-Aug-12 - _a2 standard bw.stb - Plot Date: 11-Sep-12



SOIL EROSION CONTROL NOTES

- GENERAL**
1. THE CONTRACTOR SHALL IMPLEMENT AND MAINTAIN THE SOIL EROSION CONTROL MEASURES AS SHOWN ON THE PLANS AT ALL TIMES DURING CONSTRUCTION ON THIS PROJECT. ANY MODIFICATIONS OR ADDITIONS TO THE SOIL EROSION CONTROL MEASURES DUE TO CONSTRUCTION OR CHANGED CONDITIONS SHALL BE COMPLIED WITH AS REQUIRED OR DIRECTED BY THE OWNER, PROJECT ENGINEER, OR THE CITY OF ANN ARBOR.
 2. ALL SOIL EROSION AND SEDIMENTATION CONTROL WORK SHALL CONFORM TO THE PERMIT REQUIREMENTS OF THE CITY OF ANN ARBOR, CHAPTER 63, AND THE LAWS OF THE STATE OF MICHIGAN.
 3. DAILY OR AFTER STORM EVENT INSPECTIONS SHALL BE MADE BY THE CONTRACTOR. PERIODIC INSPECTIONS MAY BE MADE BY THE OWNER/PROJECT ENGINEER TO DETERMINE THE EFFECTIVENESS OF EROSION AND SEDIMENTATION CONTROL MEASURES. ANY NECESSARY CORRECTIONS SHALL BE MADE WITHOUT DELAY, AND WITHOUT ADDITIONAL COST TO THE OWNER.
 4. EROSION AND SEDIMENTATION FROM WORK ON THE SITE SHALL BE CONTAINED ON THE SITE AND NOT BE ALLOWED TO COLLECT ON ANY OFF-SITE AREAS OR WATERWAYS.
 5. ALL MUD/DIRT TRACKED ONTO ROADS FROM THE SITE DUE TO CONSTRUCTION, SHALL BE PROMPTLY REMOVED BY THE CONTRACTOR. IF SO ORDERED, THE CONTRACTOR SHALL EMPLOY A MECHANICAL STREET SWEEPER AT NO ADDITIONAL COST TO THE OWNER.
 6. RESTORATION OF ALL DISTURBED AREAS, INCLUDING PLACEMENT OF TOPSOIL, SEED, FERTILIZER AND MULCH AND/OR SOD SHALL BE DONE WITHIN 5 DAYS OF THE COMPLETION OF FINAL GRADE
 7. CONSTRUCTION OPERATIONS SHALL BE SCHEDULED AND PERFORMED SO THAT PREVENTATIVE SOIL EROSION CONTROL MEASURES ARE IN PLACE PRIOR TO EXCAVATION IN CRITICAL AREAS AND TEMPORARY STABILIZATION MEASURES ARE IN PLACE IMMEDIATELY FOLLOWING BACKFILLING OPERATIONS.
 8. SPECIAL PRECAUTIONS WILL BE TAKEN IN THE USE OF CONSTRUCTION EQUIPMENT TO PREVENT SITUATIONS THAT PROMOTE EROSION.
 9. PROPER DUST CONTROL SHALL BE MAINTAINED DURING CONSTRUCTION BY USE OF WATER TRUCKS AND/OR CHLORIDE AS REQUIRED.
 10. THE CONTRACTOR SHALL BE RESPONSIBLE FOR MAINTAINING ALL TEMPORARY SOIL EROSION CONTROL MEASURES AND REMOVAL OF SOME UPON AUTHORIZED COMPLETION OF THE PROJECT. COMPLETION OF PROJECT WILL NOT BE AUTHORIZED UNTIL ALL SITE WORK AND UTILITY CONSTRUCTION IS COMPLETE AND ALL SOILS ARE STABILIZED.
 11. THE CONTRACTOR SHALL NOT GRADE INTO ADJACENT PROPERTIES. SILT FENCE SHALL BE INSTALLED AND MAINTAINED TO PREVENT GRADING, EROSION AND SEDIMENTATION INTO THEM.
 12. TREE PROTECTION FENCING MUST REMAIN INTACT UNTIL RESTORATION OF THE SITE IS COMPLETE.
- SEQUENCE OF EROSION CONTROL MEASURES:**
1. INSTALL SILT FENCE, TREE PROTECTION FENCING AND INLET FILTERS ON EXISTING STORM INLETS PRIOR TO ANY CLEARING OR EARTH MOVING OPERATION.
 2. INSTALL INLET FILTERS IMMEDIATELY FOLLOWING INSTALLATION OF PROPOSED STORM

- DRAINAGE SYSTEM.**
3. CONTINUALLY MAINTAIN EROSION AND SEDIMENTATION CONTROL MEASURES, AS REQUIRED TO ALLOW DRAINAGE AND SEDIMENT REMOVAL. REMOVE ANY ACCUMULATED SEDIMENT.
 4. STRIP AND CLEAR - MAINTAIN EROSION CONTROL MEASURES AROUND TEMPORARY STOCK PILES.
 5. ROUGH GRADE
 6. INSTALL STORMWATER MANAGEMENT SYSTEM.
 7. SEED AND INSTALL EROSION CONTROL BLANKET IN ALL BIORETENTION PONDING ZONES.
 8. REFER TO PLANTING PLAN FOR PERMANENT SITE STABILIZATION - PLUG THROUGH EROSION CONTROL BLANKET.
 9. CONNECT STORMWATER MANAGEMENT SYSTEM.
 9. ENSURE ALL SOIL IS STABILIZED. REMOVE ALL TEMPORARY SOIL EROSION CONTROL MEASURES.
- TEMPORARY SEEDING:**
1. SEED IN ACCORDANCE WITH PROJECT DRAWINGS AND SPECIFICATIONS.
 2. ANY DISTURBED AREA NOT PAVED, SEEDED, MULCHED, SODDED OR BUILT UPON BY NOVEMBER 15TH OR JUNE 30TH IS TO BE TEMPORARILY STABILIZED PER SPECIFICATIONS.
- ROADS:**
1. DURING CONSTRUCTION, ALL ROADS SHALL BE PROTECTED FROM UNVEGETATED AREAS WASHING ONTO ROAD SURFACE BY PLACEMENT OF SILT FENCE BEHIND CURB OR A 10 FOOT WIDE STRAW MULCH BANK BEHIND CURB OR OTHER APPROVED METHOD AND/OR AS SHOWN ON THE PLANS.

2. DURING CONSTRUCTION OF ANY PORTION OF THE PROJECT, ROADS SHALL BE MAINTAINED FREE OF DIRT, SILT AND CONSTRUCTION DEBRIS.

CATCH BASIN/MANHOLE PROTECTION:

1. PROTECT STORM SEWER CATCH BASINS WITH APPROVED INLET FILTERS.

LEGEND

- EXISTING TREE TO TRANSPLANT
- STONE WEIR
- PLUNGE POOL
- ARMORED OUTLET
- LIMIT OF GRADING & SILT FENCE
- EROSION CONTROL BLANKET

PROJECT MANAGEMENT - PUBLIC SERVICES - CITY OF ANN ARBOR

MILLER AVENUE IMPROVEMENTS
GARDEN HOMES PARK
BIO RETENTION GRADING PLAN

SCALE PLAN: #/###/###

DRAWING No. 2009023 - 94

SHEET No. 94 OF 95

REV.	DATE	DESCRIPTION	DRAWN	CHECKED
1	08-10-12	GRADE INSPECTION PLAN REVIEW		