



Pittsfield Charter Township Clerk's Office

6201 West Michigan Avenue, Ann Arbor, MI 48108
Phone: (734) 822-3120 • Fax: (734) 944-8024
Website: www.pittsfield-mi.gov

Alan Israel
Township Clerk
israela@Pittsfield-mi.gov

Lyn Badalamenti
Deputy Clerk
BadalamentiL@Pittsfield-mi.gov

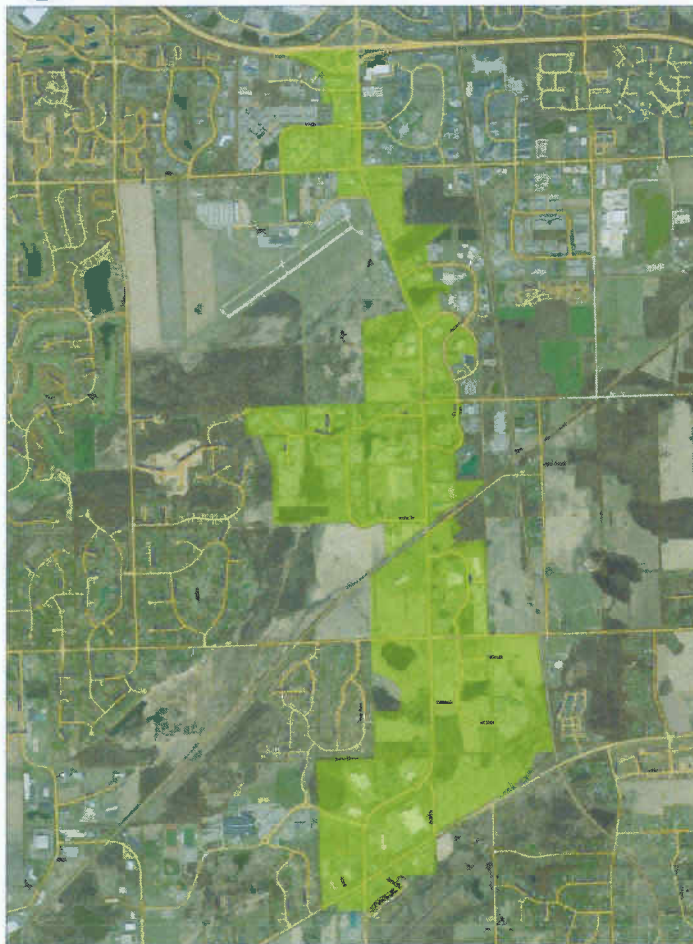
NOTICE OF PUBLIC HEARING

The Board of Trustees of the Charter Township of Pittsfield, Washtenaw County, Michigan, will hold a Public Hearing on:
Wednesday, May 22, 2013 at 6:30 p.m.

At the Pittsfield Township Administrative Building, 6201 W. Michigan Ave., Ann Arbor, MI 48108-9721, to consider the establishment of a Corridor Improvement Authority in accordance with Public Act 280 of 2005, as amended. The proposed boundaries of the Corridor Improvement Authority Development area are depicted below:



State Corridor Boundary 94 to MI Ave.



The Board of Trustees will hear comments from citizens, taxpayers and property owners, and officials from any affected taxing jurisdiction. No action will be taken. Any further information regarding the above Public Hearing may be obtained at the Township Clerk's Office during regular office hours 8:00 a.m. to 5:00 p.m. Monday through Friday, or by phone at (734) 822-3120.

Alan Israel, CLERK
Charter Township of Pittsfield
Washtenaw County, Michigan