

AMENDMENT NUMBER 1 BETWEEN THE CITY OF ANN ARBOR AND THE
DOWNTOWN DEVELOPMENT AUTHORITY OF THE CITY OF ANN ARBOR
REGARDING
RESPONSIBILITIES AND COST ALLOCATION FOR
THE SOUTH UNIVERSITY STREETScape IMPROVEMENTS PROJECT

The City of Ann Arbor, a Michigan municipal corporation with its principal offices at 301 E. Huron Street, Ann Arbor, Michigan 48104 (“City”), and the Downtown Development Authority of the City of Ann Arbor, a public corporation organized and existing pursuant to the authority of Act 197, Public Acts of Michigan, 1975, MCL 125.1651 *et seq.* with its principal offices at 150 South Fifth Avenue, Suite 301, Ann Arbor, Michigan 48104 (“DDA”), agree to amend the Responsibilities and Cost Allocation Agreement for the South University Streetscape Improvements Project executed by the parties dated May 16, 2017, as follows:

- 1) Section 1 is amended to read as follows:

The City and the DDA shall undertake and complete the construction phase of the Project in accordance with the terms of this Agreement. Exhibit A to this Agreement refers to and incorporates by reference the Project design, which details the complete scope of the construction work. Exhibit B to this Agreement lists the estimate for each cost sharing category and the allocation of costs between the DDA and the City for each category. As set forth in Exhibit B, the total dollar amount estimate of the City’s share of the Project is \$841,723.20.

- 2) Exhibit A, is amended to read as shown in the Revised Exhibit A, attached and incorporated into this Amendment.
- 3) Exhibit B, is amended to read as shown in the Revised Exhibit B, attached and incorporated into this Amendment.

All terms, conditions, and provisions of the original agreement between the parties executed May 16, 2017, unless specifically amended above, are to apply to this amendment and are made a part of this amendment as though expressly rewritten, incorporated, and included herein.

This amendment to the agreement between the parties shall be binding on the heirs, successors and assigns of the parties.

Dated this June 5, 2017.

CITY OF ANN ARBOR, a Michigan
municipal corporation

ANN ARBOR DOWNTOWN
DEVELOPMENT AUTHORITY, a public
corporation

By: _____
Christopher Taylor, Mayor

By: _____
Susan Pollay, DDA Executive Director

By: _____
Jacqueline Beaudry, City Clerk

By: _____
Rishi Narayan, DDA Board Chair

Approved as to substance:

Howard S. Lazarus, City Administrator

Craig Hupy, Public Services Area Administrator

Approved as to form:

Stephen K. Postema, City Attorney

REVISED EXHIBIT A

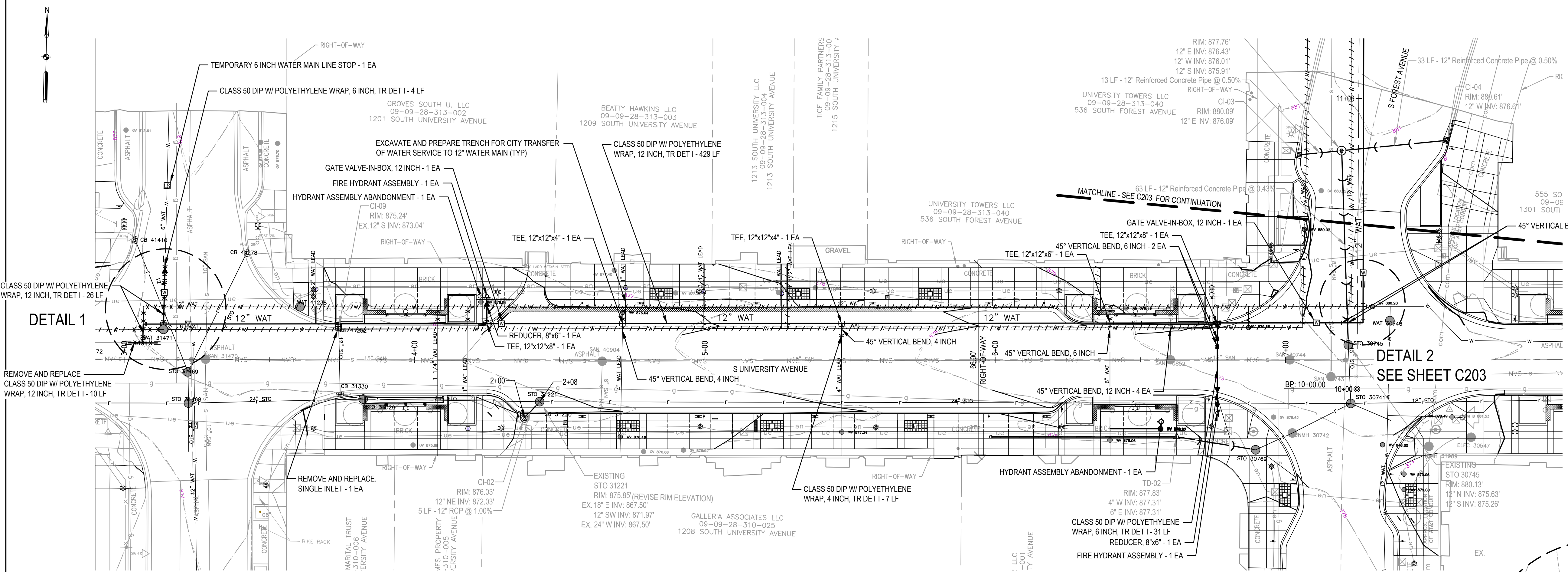
Attached as Revised Exhibit A is the Project design, detailing the scope of the construction work for the South University Streetscape Improvements Project.

NOTES

- STATION REFERENCES FOR WATER MAIN FITTINGS AND APPURTENANCES ARE ALONG LENGTH OF PROPOSED WATER MAIN.
- ALL MATERIALS, EQUIPMENT AND CONSTRUCTION SHALL BE IN ACCORDANCE WITH THE CURRENT CITY OF ANN ARBOR STANDARD SPECIFICATIONS AND DETAILS. THE OMISSION OF ANY CURRENT STANDARD DETAIL DOES NOT RELIEVE THE CONTRACTOR FROM THIS REQUIREMENT.
- DUCTILE IRON PIPE SHALL BE THICKNESS CLASS 52 WITH POLYETHYLENE WRAP AND PUSH-ON JOINTS, UNLESS OTHERWISE NOTED.
- MECHANICAL JOINTS MUST MEET AWWA SPECIFICATION C111 AND SHALL INCLUDE PLAIN RUBBER MECHANICAL JOINT GASKETS. PLEASE QUOTE ONLY: AMERICAN PIPE "FAST GRIP" GASKET SYSTEM, GRIFFIN PIPE "FIELD LOK 350" GASKET SYSTEM, OR U.S. PIPE "FIELD LOK 350" GASKET SYSTEM.
- ALL HORIZONTAL BENDS, TEES AND FITTINGS SHALL INCLUDE THRUST BLOCKS. RESTRAINED JOINTS ARE REQUIRED FOR VERTICAL BENDS. (TR-FLEX RESTRAINED JOINT PIPE BY U.S. PIPE, LOK-RING JOINT PIPE BY AMERICAN DUCTILE IRON PIPE, OR APPROVED EQUAL). RESTRAINED JOINT GASKET SYSTEMS MAY ALSO BE USED (FIELD-LOK 350 BY U.S. PIPE, FAST-GRIP BY AMERICAN DUCTILE IRON PIPE, OR APPROVED EQUAL).
- CONTRACTOR TO FOLLOW CITY REQUIREMENTS FOR WATER MAIN TESTING. WATER MAIN PRESSURE/BACTERIA TESTING MATERIAL AND FEES WILL BE PAID BY THE CONTRACTOR.
- ALL WATER MAIN TO HAVE A TYPICAL 5.5' COVER, MAINTAIN A MINIMUM OF 18" VERTICAL CLEARANCE FOR STORM AND SANITARY CROSSINGS AND A MINIMUM OF 12" VERTICAL CLEARANCE WITH ALL OTHER UTILITIES.
- UNLESS OTHERWISE NOTED, THE CONTRACTOR SHALL UTILIZE STANDARD PIPE DEFLECTIONS FOR FOLLOWING THE PROPOSED ALIGNMENT.
- NEW FIRE HYDRANTS SHALL BE EJM 5BR-250 WITH 4" STORZ QUICK CONNECT. VALVE SHALL BE EJM FLOWMASTER RESILIENT SEATED GATE VALVES.
- FIRE HYDRANT ASSEMBLIES SHALL INCLUDE ALL NECESSARY THRUST BLOCKS, BENDS AND MECHANICAL JOINTS. ADJUSTMENT OF THE STOP BOX. FIRE HYDRANT ASSEMBLY INCLUDES 6" STOP BOX LOCATED 3' FROM HYDRANT.
- LINE STOPS SHALL BE INSTALLED WHERE EXISTING WATER MAINS CANNOT BE SUFFICIENTLY ISOLATED TO COMPLETE THE WORK.
- CONNECTIONS TO THE EXISTING WATER MAIN SHALL NOT BE MADE UNTIL THE NEW WATER MAIN HAS BEEN SUCCESSFULLY PRESSURE TESTED AND HAS PASSED BACTERIOLOGICAL TESTING. FINAL CONNECTIONS SHALL BE COORDINATED WITH THE ENGINEER. THE CONTRACTOR SHALL PERFORM ALL WATER SYSTEM SHUT DOWNS AFTER APPROPRIATE NOTIFICATION TO THOSE AFFECTED.
- ALL HYDRANTS REMOVED BY THE CONTRACTOR SHALL BE DELIVERED TO THE CITY OF ANN ARBOR FIELD OPERATIONS FACILITY LOCATED AT 4251 STONE SCHOOL ROAD, ANN ARBOR, MI 48108 BY THE CONTRACTOR AND WILL BECOME THE PROPERTY OF THE CITY OF ANN ARBOR.
- ALL WATER MAIN TRENCH BACKFILL SHALL BE MDOT CLASS II MATERIAL.
- ABANDONMENT OF WATER STRUCTURES SHALL FOLLOW CITY OF ANN ARBOR STANDARDS.
- FITTINGS OTHER THAN THOSE SPECIFICALLY LISTED AS SEPARATE PAY ITEMS, BLOW-OFF ASSEMBLIES, CONCRETE THRUST BLOCKS, SOLID SLEEVES AND MECHANICAL JOINTS, WHICH ARE REQUIRED TO COMPLETE THE WORK, SHALL BE INCLUDED IN THE PRICE OF THE WATER MAIN.

SEQUENCING NOTES

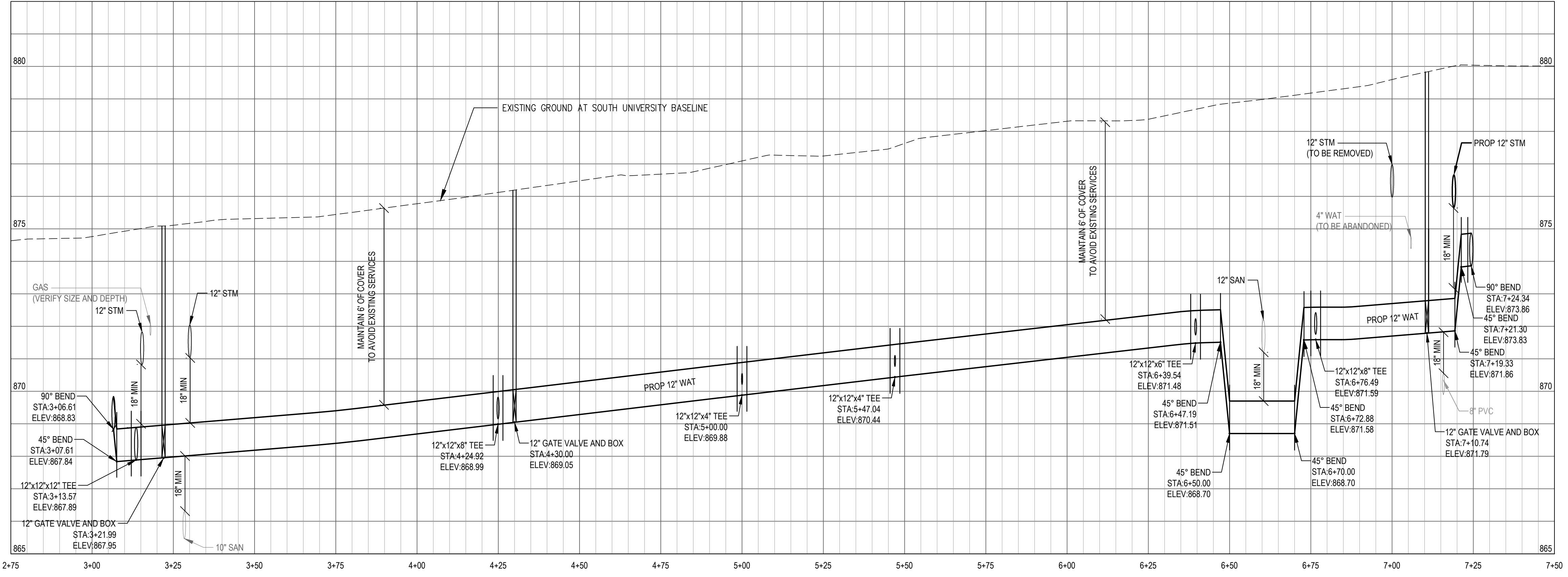
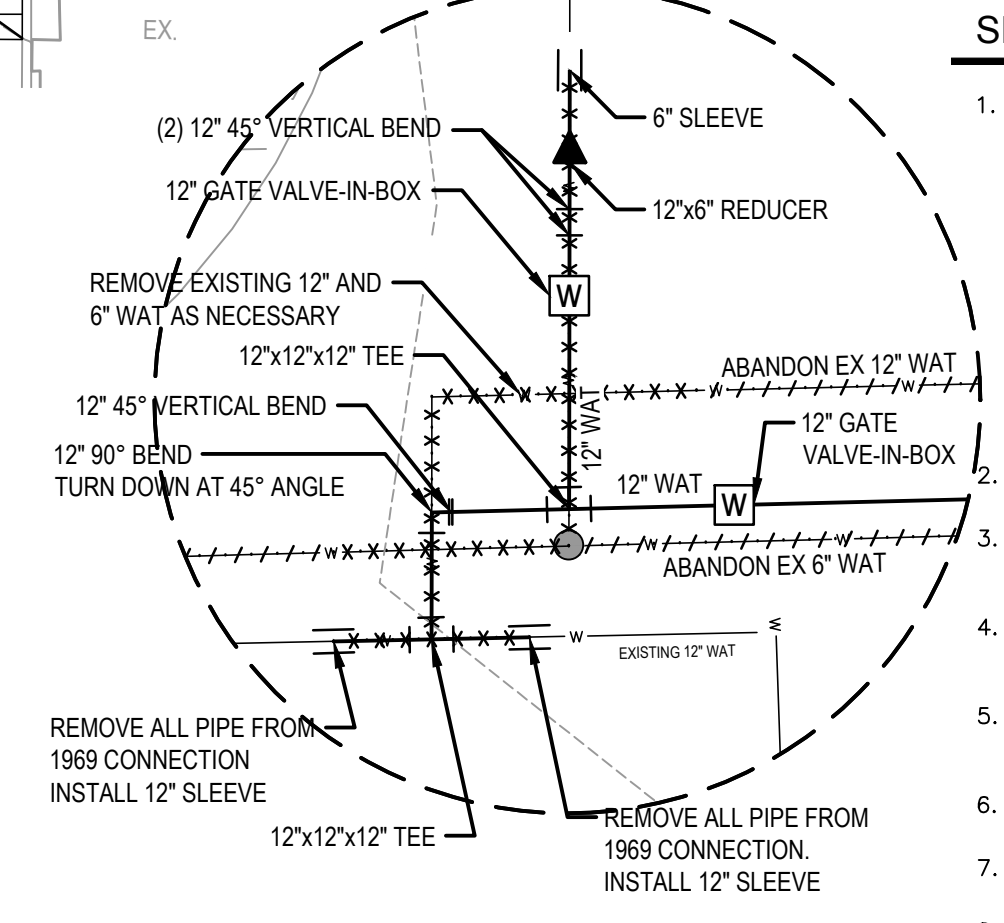
- CONTRACTOR SHALL COORDINATE THE RECONNECTION OF EXISTING WATER SERVICES CONNECTED TO THE EXISTING 6" AND 12" WATER MAINS OVER TO THE PROPOSED 12" WATER MAIN. THE CONTRACTOR SHALL EXCAVATE AND LOCATE EXISTING WATER SERVICES TO ALL PROPERTIES SERVED BY THE 6" AND 12" WATER MAIN IN THE APPROXIMATE LOCATIONS AS SHOWN. COORDINATE WITH THE CITY OF ANN ARBOR PUBLIC WORKS UNIT TO INSTALL THE NEW SERVICE CONNECTIONS. ALL COSTS ASSOCIATED WITH THIS WORK SHALL BE INCLUDED IN "EXCAVATE AND BACKFILL FOR WATER SERVICE TAP AND LEAD." CONTRACTOR SHALL STAGE THE WORK SUCH THAT WATER SERVICE IS RESTORED BY THE END OF THE WORKING DAY. NIGHT WORK MAY BE REQUIRED TO MINIMIZE IMPACT TO SERVED BUSINESSES.
- CONTRACTOR SHALL INSTALL 12" INSERTION VALVES AT CHURCH STREET AND SOUTH FOREST.
- CONTRACTOR SHALL COORDINATE WITH THE CITY OF ANN ARBOR TO PERFORM TEST SHUT DOWNS OF THE 6" AND 12" WATER MAINS TO VERIFY LINE STOP LOCATIONS.
- AS-NECESSARY THE CONTRACTOR SHALL INSTALL 6" LINE STOPS AT EAST UNIVERSITY AND CHURCH STREET, 12" LINE STOP ON FOREST AND A 4" LINE STOP AT SOUTH FOREST.
- CONTRACTOR SHALL CUT AND CAP THE 6" WATER MAIN AT THE SOUTH FOREST INTERCONNECT AND INSTALL THE 4" CONNECTION TO THE 12" WATER MAIN AT SOUTH FOREST.
- CONTRACTOR SHALL RECONNECT THE 6" WATER MAIN ON CHURCH STREET TO THE PROPOSED 12" WATER MAIN.
- CONTRACTOR SHALL CUT AND CAP 6" WATER MAIN ON EAST UNIVERSITY.
- CONTRACTOR SHALL PROPERLY ABANDON ALL REMAINING APPURTENANCES ON THE 6" AND 12" WATER MAINS.



DETAIL 1

DETAIL 2
SEE SHEET C203

DETAIL 1

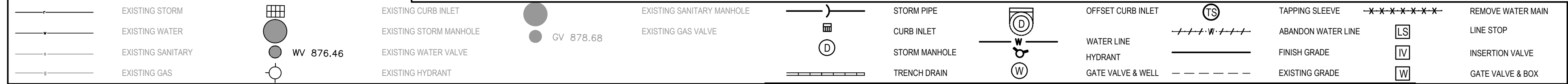


ESTIMATED WATER MAIN REMOVAL QUANTITIES		
QUANTITY	UNIT	DESCRIPTION
950	LF	WATER MAIN PIPE ABANDONMENT
3	EA	GATE VALVE-IN-BOX ABANDONMENT
2	EA	GATE VALVE-IN-WELL ABANDONMENT
2	EA	HYDRANT ASSEMBLY ABANDONMENT

ESTIMATED WATER MAIN CONSTRUCTION QUANTITIES		
QUANTITY	UNIT	DESCRIPTION
465	LF	CLASS 50 DIP W/POLYETHYLENE WRAP, 8 INCH, TR DET I
41	LF	CLASS 50 DIP W/POLYETHYLENE WRAP, 6 INCH, TR DET I
7	LF	CLASS 50 DIP W/POLYETHYLENE WRAP, 4 INCH, TR DET I
12	EA	BENDS & REDUCERS, 12 INCH
2	EA	BENDS & REDUCERS, 8 INCH
3	EA	BENDS & REDUCERS, 6 INCH
2	EA	BENDS & REDUCERS, 4 INCH
7	EA	TEES & CROSSES, 12 INCH
2	EA	FIRE HYDRANT ASSEMBLY
4	EA	GATE VALVE-IN-BOX, 12 INCH
2	EA	SEWER BULKHEAD, 12 INCH
2	EA	TEMPORARY 12 INCH WATER MAIN LINE STOP
2	EA	TEMPORARY 6 INCH WATER MAIN LINE STOP
1	EA	SINGLE INLET



LEGEND (SEE MASTER LEGEND ON G101 FOR ALL OTHER SYMBOLS)



DOWNTOWN DEVELOPMENT AUTHORITY - CITY OF ANN ARBOR

WATER MAIN PLAN - SOUTH UNIVERSITY AVENUE

SCALE: 1" = 20'

DRAWING NO. **C202**

SHEET NO. 38 OF 56

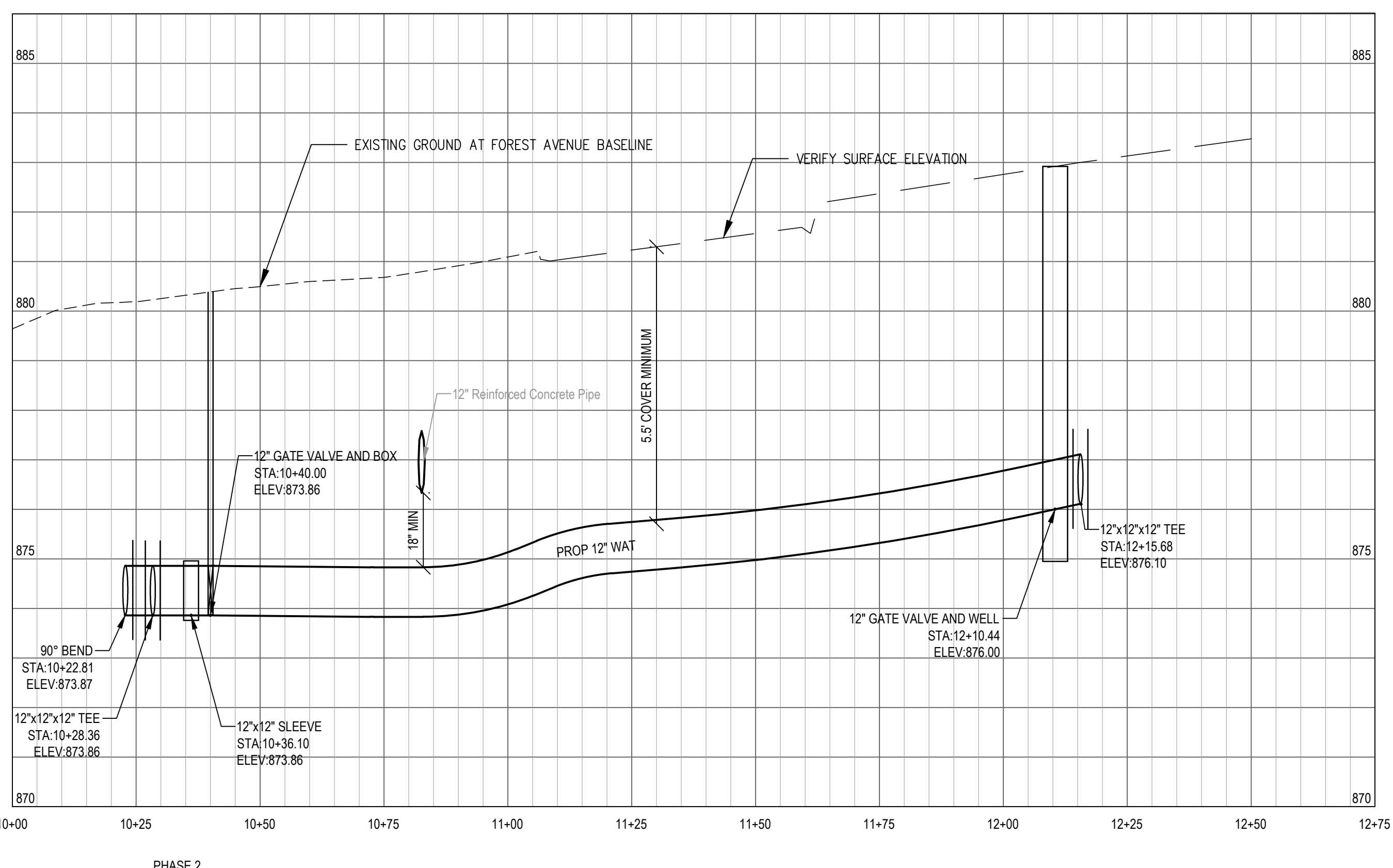
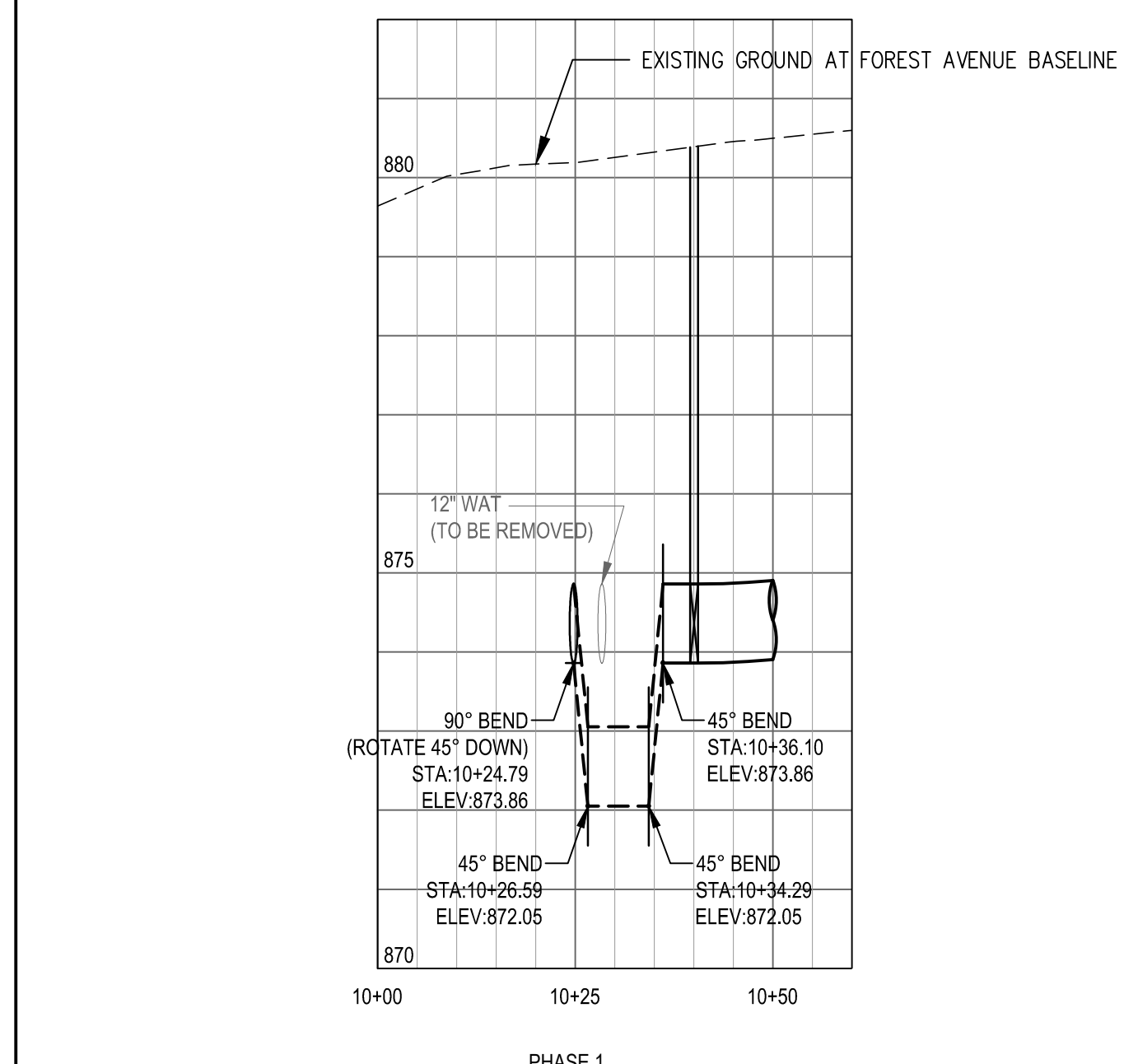
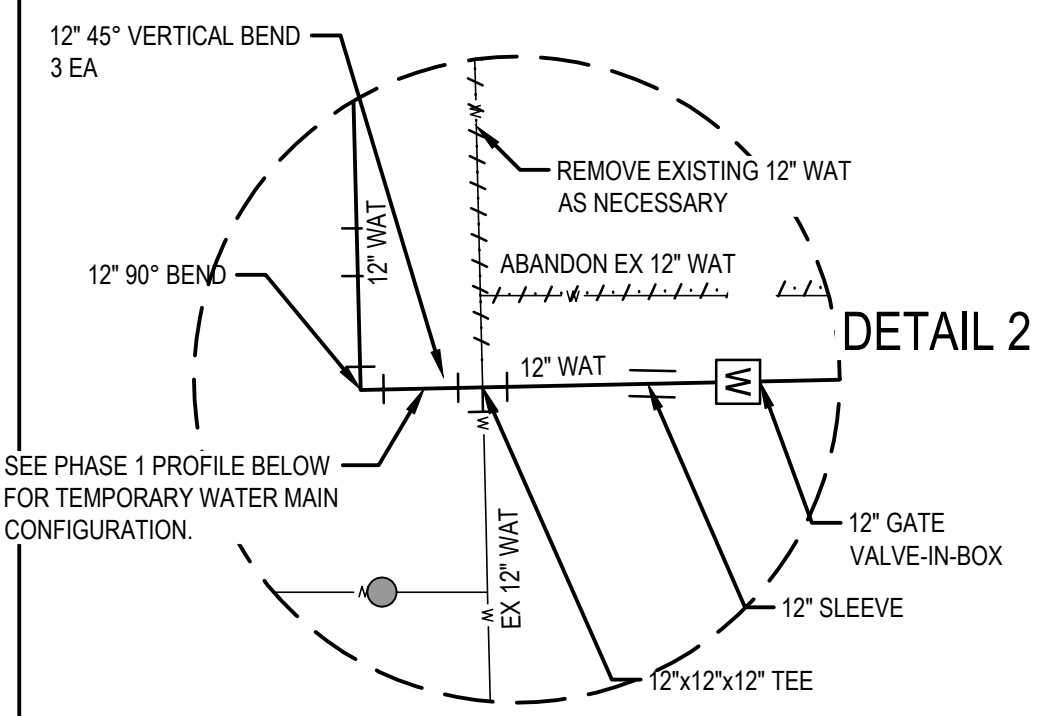
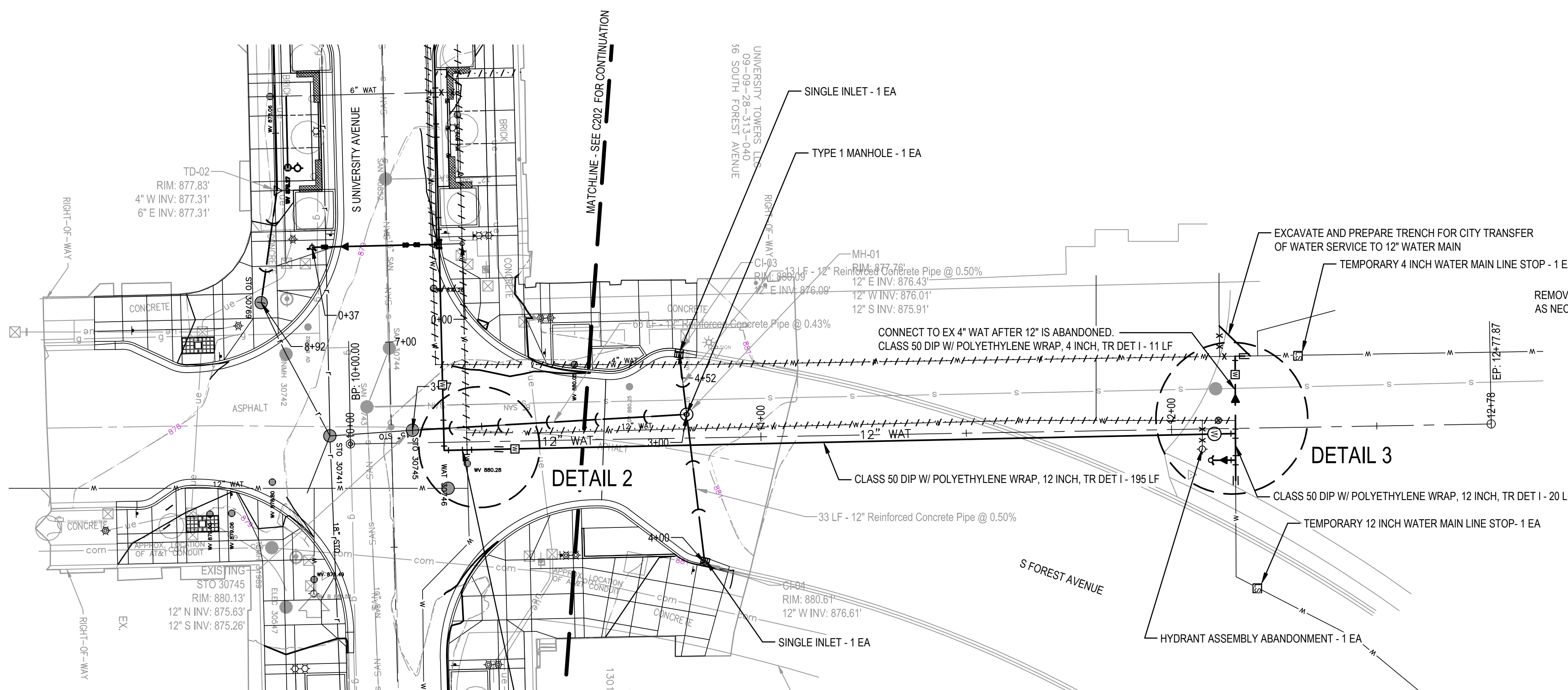
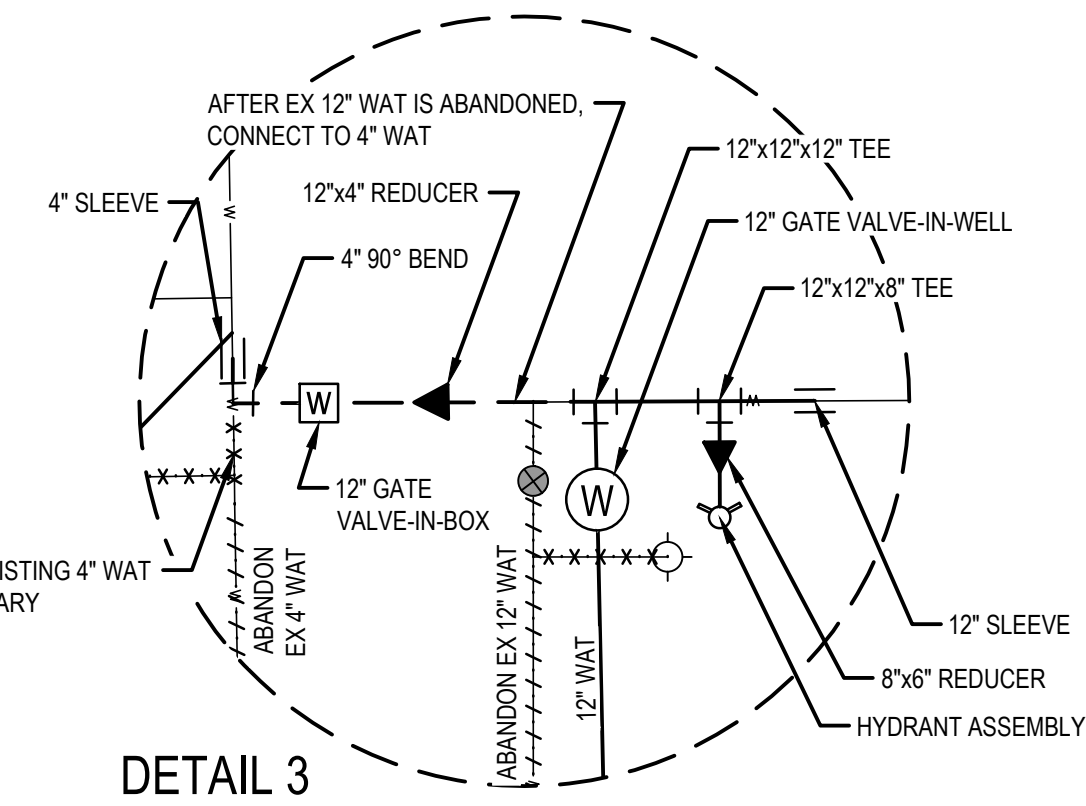
SEE ABOVE	XXX	SITE PLAN REVIEW	14SEP16	SJT/AMR	EM/BD
BENCH MARK	SURVEY BOOK	SITE PLAN REVIEW	08AUG16	SJT/AMR	EM/BD
REV. NO.	DESCRIPTION	DATE	DR. BY	CH. BY	APPROVED BY

NOTES

- STATION REFERENCES FOR WATER MAIN FITTINGS AND APPURTENANCES ARE ALONG LENGTH OF PROPOSED WATER MAIN.
- ALL MATERIALS, EQUIPMENT AND CONSTRUCTION SHALL BE IN ACCORDANCE WITH THE CURRENT CITY OF ANN ARBOR STANDARD SPECIFICATIONS AND DETAILS. THE OMISSION OF ANY CURRENT STANDARD DETAIL DOES NOT RELIEVE THE CONTRACTOR FROM THIS REQUIREMENT.
- DUCTILE IRON PIPE SHALL BE THICKNESS CLASS 52 WITH POLYETHYLENE WRAP AND PUSH-ON JOINTS, UNLESS OTHERWISE NOTED.
- MECHANICAL JOINTS MUST MEET AWWA SPECIFICATION C111 AND SHALL INCLUDE PLAIN RUBBER MECHANICAL JOINT GASKETS. PLEASE QUOTE ONLY AMERICAN PIPE "FAST GRIP" GASKET SYSTEM, GRIFFIN PIPE "FIELD LOK 350" GASKET SYSTEM, OR U.S. PIPE "FIELD LOK 350" GASKET SYSTEM.
- ALL HORIZONTAL BENDS, TEES AND FITTINGS SHALL INCLUDE THRUST BLOCKS. RESTRAINED JOINTS ARE REQUIRED FOR VERTICAL BENDS. (TR-FLEX RESTRAINED JOINT PIPE BY U.S. PIPE, LOK-RING JOINT PIPE BY AMERICAN DUCTILE IRON PIPE, OR APPROVED EQUAL). RESTRAINED JOINT GASKET SYSTEMS MAY ALSO BE USED (FIELD-LOK 350 BY U.S. PIPE, FAST-GRIP BY AMERICAN DUCTILE IRON PIPE, OR APPROVED EQUAL).
- CONTRACTOR TO FOLLOW CITY REQUIREMENTS FOR WATER MAIN TESTING. WATER MAIN PRESSURE/BACTERIA TESTING MATERIAL AND FEES WILL BE PAID BY THE CONTRACTOR.
- ALL WATER MAIN TO HAVE A TYPICAL 5.5' COVER, MAINTAIN A MINIMUM OF 18" VERTICAL CLEARANCE FOR STORM AND SANITARY CROSSINGS AND A MINIMUM OF 12" VERTICAL CLEARANCE WITH ALL OTHER UTILITIES.
- UNLESS OTHERWISE NOTED, THE CONTRACTOR SHALL UTILIZE STANDARD PIPE DEFLECTIONS FOR FOLLOWING THE PROPOSED ALIGNMENT.
- NEW FIRE HYDRANTS SHALL BE EJW 5BR-250 WITH 4" STORZ QUICK CONNECT VALVE SHALL BE EJW FLOWMASTER RESILIENT SEATED GATE VALVES.
- FIRE HYDRANT ASSEMBLIES SHALL INCLUDE ALL NECESSARY THRUST BLOCKS, BENDS, PIPE AND FITTINGS, INCLUDING ADJUSTMENT OF THE STOP BOX. FIRE HYDRANT ASSEMBLY INCLUDES 6" STOP BOX LOCATED 3' FROM HYDRANT.
- LINE STOPS SHALL BE INSTALLED WHERE EXISTING WATER MAINS CANNOT BE SUFFICIENTLY ISOLATED TO COMPLETE THE WORK.
- CONNECTIONS TO THE EXISTING WATER MAIN SHALL NOT BE MADE UNTIL THE NEW WATER MAIN HAS BEEN SUCCESSFULLY PRESSURE TESTED AND HAS PASSED BACTERIOLOGICAL TESTING. FINAL CONNECTIONS SHALL BE COORDINATED WITH THE ENGINEER. THE CONTRACTOR SHALL PERFORM ALL WATER SYSTEM SHUT DOWNS AFTER APPROPRIATE NOTIFICATION TO THOSE AFFECTED.
- ALL HYDRANTS REMOVED BY THE CONTRACTOR SHALL BE DELIVERED TO THE CITY OF ANN ARBOR FIELD OPERATIONS FACILITY LOCATED AT 4251 STONE SCHOOL ROAD, ANN ARBOR, MI 48108 BY THE CONTRACTOR AND WILL BECOME THE PROPERTY OF THE CITY OF ANN ARBOR.
- ALL WATER MAIN TRENCH BACKFILL SHALL BE MDOT CLASS II MATERIAL.
- ABANDONMENT OF WATER STRUCTURES SHALL FOLLOW CITY OF ANN ARBOR STANDARDS.
- FITTINGS OTHER THAN THOSE SPECIFICALLY LISTED AS SEPARATE PAY ITEMS, BLOW-OFF ASSEMBLIES, CONCRETE THRUST BLOCKS, SOLID SLEEVES AND MECHANICAL PLUGS, WHICH ARE REQUIRED TO COMPLETE THE WORK, SHALL BE INCLUDED IN THE PRICE OF THE WATER MAIN.

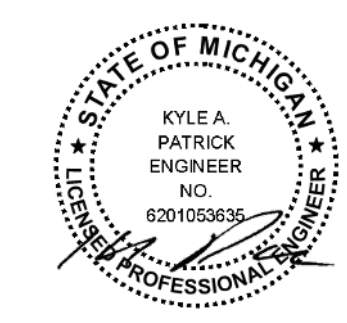
SEQUENCING NOTES

- CONTRACTOR SHALL COORDINATE THE RECONNECTION OF EXISTING WATER SERVICES CONNECTED TO THE EXISTING 6" AND 12" WATER MAINS OVER TO THE PROPOSED 12" WATER MAIN. THE CONTRACTOR SHALL EXCAVATE AND LOCATE EXISTING WATER SERVICES TO ALL PROPERTIES SERVED BY THE 6" AND 12" WATER MAIN IN THE APPROXIMATE LOCATIONS AS SHOWN. COORDINATE WITH THE CITY OF ANN ARBOR PUBLIC WORKS UNIT TO INSTALL THE NEW SERVICE CONNECTIONS. ALL COSTS ASSOCIATED WITH THIS WORK SHALL BE INCLUDED IN "EXCAVATE AND BACKFILL FOR WATER SERVICE TAP AND LEAD." CONTRACTOR SHALL STAGE THE WORK SUCH THAT WATER SERVICE IS RESTORED BY THE END OF THE WORKING DAY. NIGHT WORK MAY BE REQUIRED TO MINIMIZE IMPACT TO SERVED BUSINESSES.
- CONTRACTOR SHALL INSTALL 12" INSERTION VALVES AT CHURCH STREET AND SOUTH FOREST.
- CONTRACTOR SHALL COORDINATE WITH THE CITY OF ANN ARBOR TO PERFORM TEST SHUT DOWNS OF THE 6" AND 12" WATER MAINS TO VERIFY LINE STOP LOCATIONS.
- AS-NECESSARY THE CONTRACTOR SHALL INSTALL 6" LINE STOPS AT EAST UNIVERSITY AND CHURCH STREET, 12" LINE STOP ON FOREST AND A 4" LINE STOP AT SOUTH FOREST.
- CONTRACTOR SHALL CUT AND CAP THE 6" WATER MAIN AT THE SOUTH FOREST INTERCONNECT AND INSTALL THE 4" CONNECTION TO THE 12" WATER MAIN AT SOUTH FOREST.
- CONTRACTOR SHALL RECONNECT THE 6" WATER MAIN ON CHURCH STREET TO THE PROPOSED 12" WATER MAIN.
- CONTRACTOR SHALL CUT AND CAP 6" WATER MAIN ON EAST UNIVERSITY.
- CONTRACTOR SHALL PROPERLY ABANDON ALL REMAINING APPURTENANCES ON THE 6" AND 12" WATER MAINS.



LEGEND (SEE MASTER LEGEND ON G101 FOR ALL OTHER SYMBOLS)

EXISTING STORM	EXISTING CURB INLET	EXISTING SANITARY MANHOLE	STORM PIPE	OFFSET CURB INLET	TAPPING SLEEVE	REMOVE WATER MAIN
EXISTING WATER	EXISTING STORM MANHOLE	EXISTING GAS VALVE	CURB INLET	WATER LINE	ABANDON WATER LINE	LINE STOP
EXISTING SANITARY	EXISTING WATER VALVE	EXISTING HYDRANT	STORM MANHOLE	HYDRANT	FINISH GRADE	INSERTION VALVE
EXISTING GAS			TRENCH DRAIN	GATE VALVE & WELL	EXISTING GRADE	GATE VALVE & BOX



QUANTITY	UNIT	DESCRIPTION
400	LF	WATER MAIN PIPE ABANDONMENT
3	EA	GATE VALVE-IN-BOX ABANDONMENT
1	EA	HYDRANT ASSEMBLY ABANDONMENT

QUANTITY	UNIT	DESCRIPTION
215	LF	CLASS 50 DIP W/POLYETHYLENE WRAP, 12 INCH, TR DET I
13	LF	CLASS 50 DIP W/POLYETHYLENE WRAP, 4 INCH, TR DET I
4	EA	BENDS & REDUCERS, 12 INCH
1	EA	BENDS & REDUCERS, 8 INCH
2	EA	BENDS & REDUCERS, 4 INCH
3	EA	TEES & CROSSES, 12 INCH
1	EA	FIRE HYDRANT ASSEMBLY
1	EA	GATE VALVE-IN-BOX, 12 INCH
1	EA	GATE VALVE-IN-BOX, 4 INCH
1	EA	GATE VALVE-IN-WELL, 12 INCH
1	EA	TEMPORARY 12 INCH WATER MAIN LINE STOP
1	EA	TEMPORARY 4 INCH WATER MAIN LINE STOP
2	EA	SINGLE INLET
1	EA	TYPE I MANHOLE
112	FT	RCP, CL II, 12 INCH, TR DET I

**QUANTITIES ON SOUTH FOREST AVENUE NORTH OF SOUTH UNIVERSITY AVENUE QUANTIFIED HERE

DOWNTOWN DEVELOPMENT AUTHORITY - CITY OF ANN ARBOR

WATER MAIN PLAN - SOUTH FOREST AVENUE

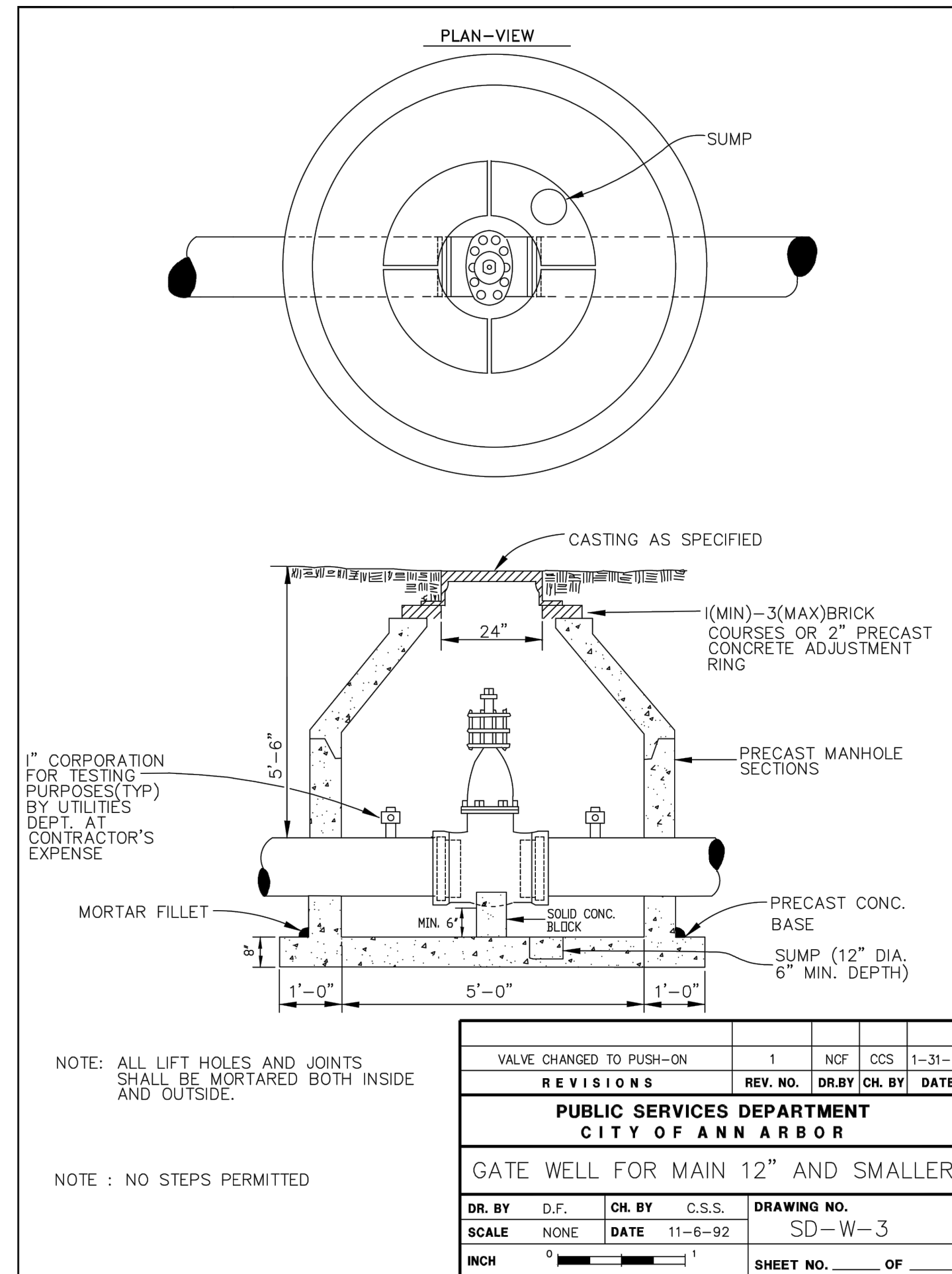
SCALE: 1" = 20' INCH

DRAWING NO. **C203**

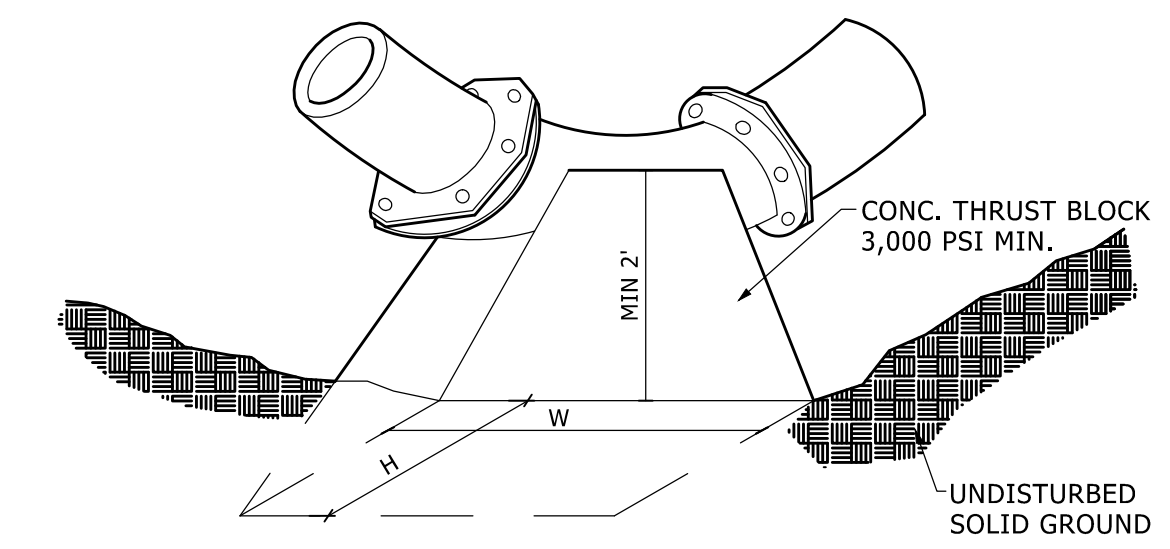
SHEET NO. 38 OF 56

SEE ABOVE	XXX				
BENCH MARK	SURVEY BOOK	REV. NO.	DESCRIPTION	DATE	DR. BY

APPROVED BY: _____

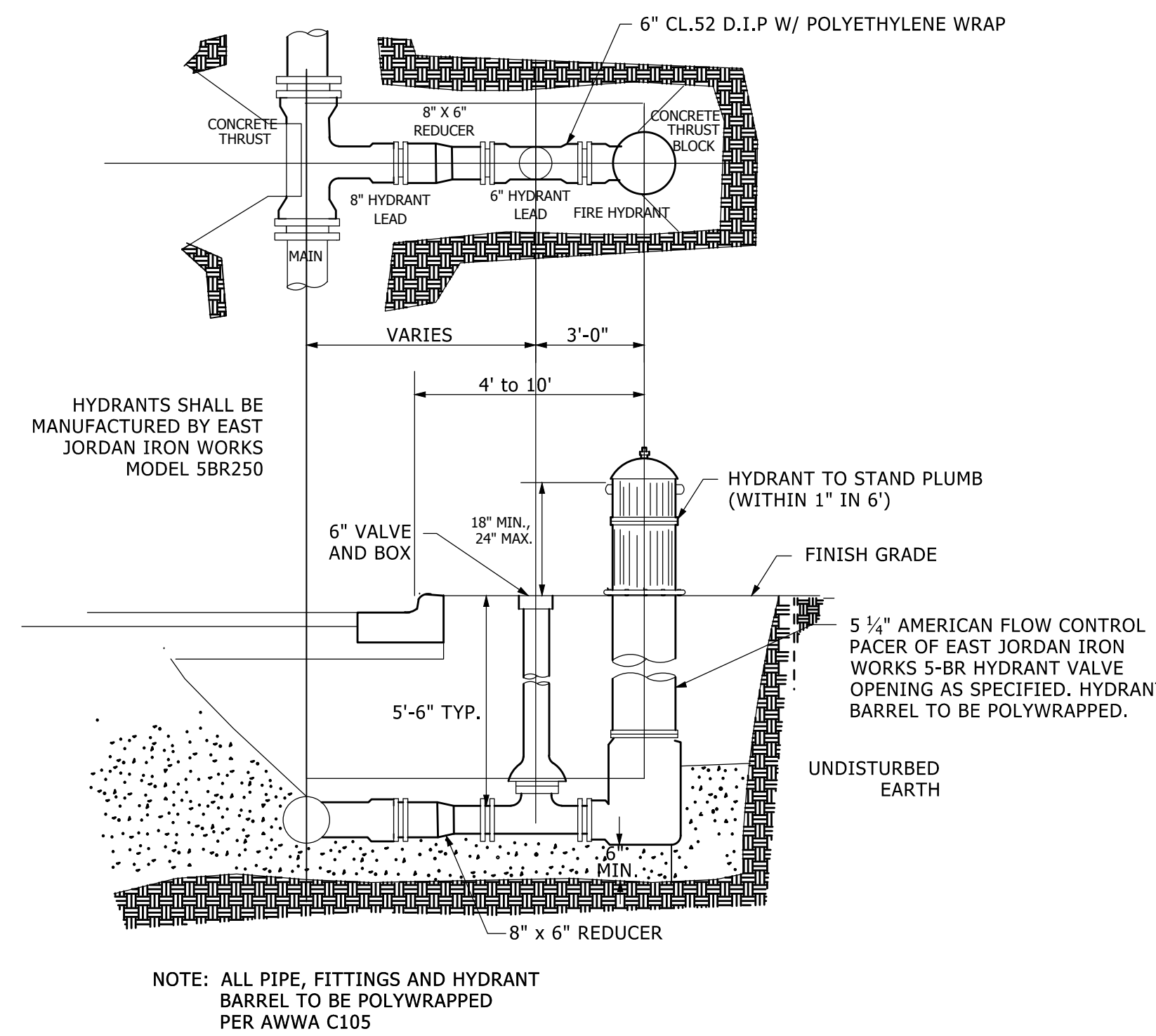
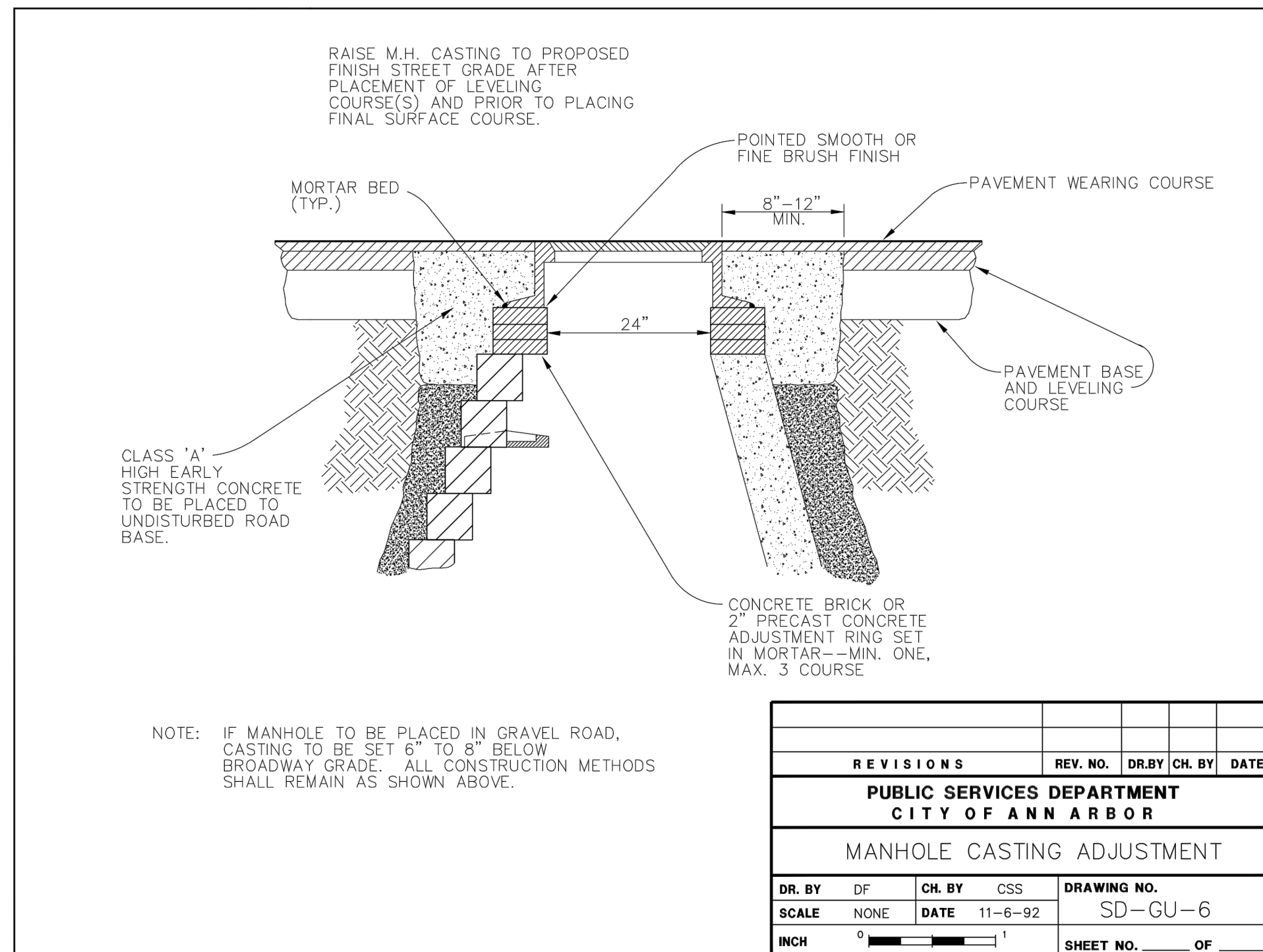


Fittings I.D. Inches	Plug Tee Cross		Bends								Hydrant		
			90°		45°		22 1/2°		11 1/4°				
	W	H	W	H	W	H	W	H	W	H	W	H	
2.5	1	1	1	1	1	1							
4	1	1	1	1	1	1							
6	2	1.5	2	2	2	1	1	1	1	1	1	2	1.5
8	2.5	2	3.5	2	2	2	2	1	1	1	1	2.5	2
12	3.5	3	5.5	3	3.5	2.5	2	2	2	2	1		
16	6	3.5	6	4	5	3	3.5	2.5	2	2			
20	8	4	12	4	6	4	4	3	3	2			
24	11	4	17	4	9	4	6	4	3.5	2			



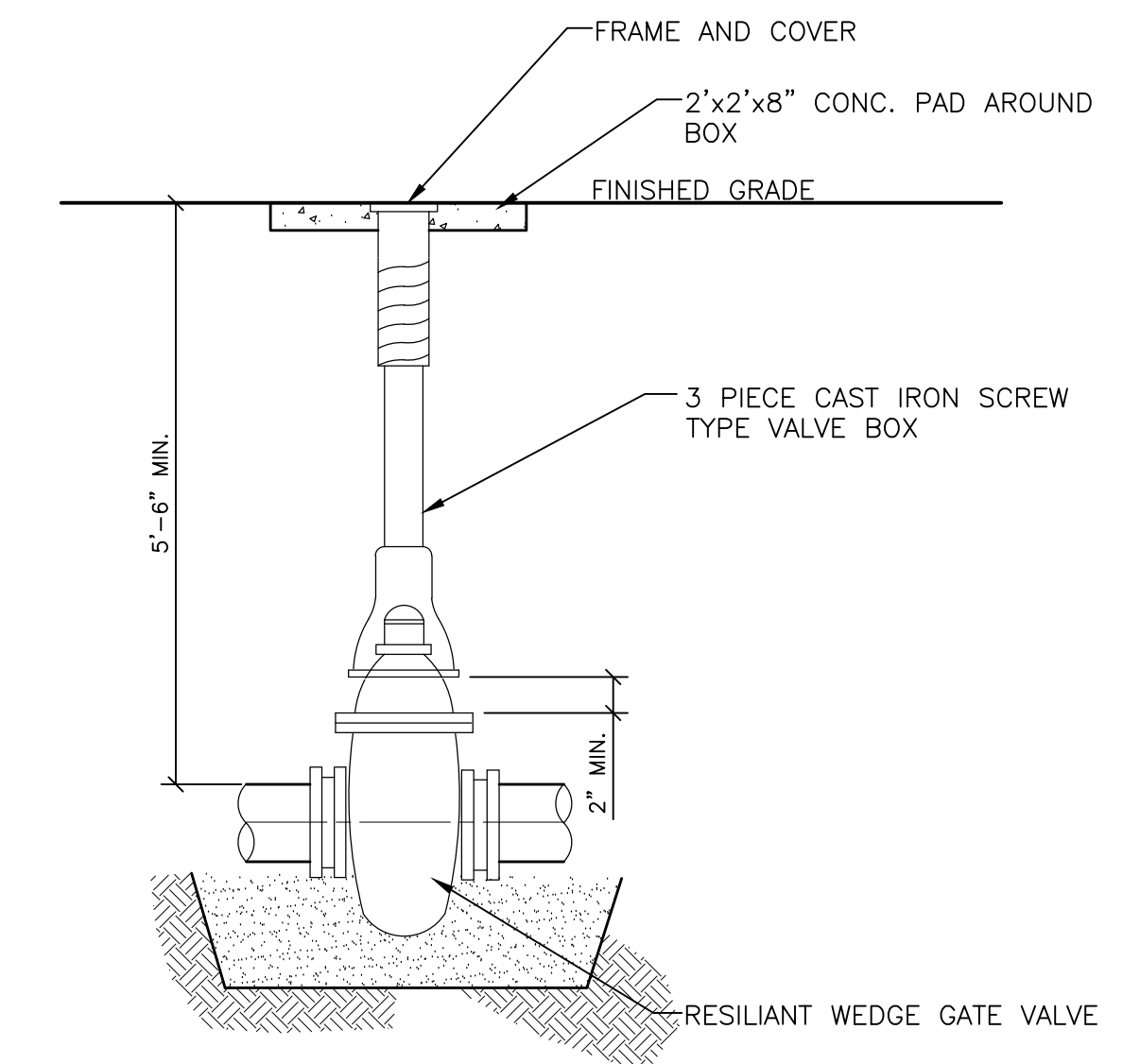
CITY OF ANN ARBOR THRUST BLOCK DETAIL

NO SCALE



CITY OF ANN ARBOR WATER MAIN HYDRANT

NO SCALE



VALVE AND BOX DETAIL

NO SCALE



LEGEND (SEE MASTER LEGEND ON G101 FOR ALL OTHER SYMBOLS)

SEE ABOVE	XXX				
BENCH MARK	SURVEY BOOK	REV. NO.	DESCRIPTION	DATE	DR. BY
			SITE PLAN REVIEW	14SEP16	SJT/AMR
			SITE PLAN REVIEW	08AUG16	SJT/AMR

DOWNTOWN DEVELOPMENT AUTHORITY - CITY OF ANN ARBOR	
SCALE	0 INCH 1
UTILITY DETAILS	
DRAWING NO.	C204
SHEET NO.	39 OF 56

REVISED EXHIBIT B

Attached as Revised Exhibit B are the cost summary and the funding responsibilities of the DDA and the City for each cost sharing category of the South University Streetscape Improvements Project.

Exhibit B - Revised City/DDA Cost Sharing Breakdown based on Fonson Quote 6/5/17
 ITB 4466 South University Streetscape Improvements

Items highlighted in blue are 100% City Funded.

Items highlighted in green are City Funded restoration items not included in Fonson's Water Main Quote

Items in red are shared at a rate of 12 percent based on the total contract portion attributable to the City's water main.

Item No.	Description	Qty.	Unit	Fonson Bid Prices		12%
				Unit Price	Total	WM Cost
101	General Conditions, Max \$40,000	1	LS	\$ 40,000.00	\$ 40,000.00	\$ 4,800.00
102	Audio Visual Tape Coverage	1	LS	\$ 850.00	\$ 850.00	\$ 102.00
120	Project Supervision, Max \$40,000	1	LS	\$ 40,000.00	\$ 40,000.00	\$ 4,800.00
203	Minor Traffic Devices, Max \$10,000	1	LS	\$ 10,000.00	\$ 10,000.00	\$ 1,200.00
205	Machine Grading, Modified	21	Sta	\$ 20,950.00	\$ 439,950.00	\$ 52,794.00
221	HMA Leveling WM	132	Ton	\$ 142.43	\$ 18,800.76	\$ 18,800.76
222	HMA Wearing WM	88	Ton	\$ 147.43	\$ 12,973.84	\$ 12,973.84
225	Recessing Pavement Markings, Longit	866	Ft	\$ 2.00	\$ 1,732.00	\$ 1,732.00
230	Remove Concrete Curb or Curb & Gutter - Any Type	270	Lf	\$ 8.00	\$ 2,160.00	\$ 2,160.00
232	Remove Concrete Sidewalk and Drive - Any Thickness	1,900	Sft	\$ 2.60	\$ 4,940.00	\$ 4,940.00
234	Concrete Curb or Curb & Gutter - Any Type WM	270	Lf	\$ 25.00	\$ 6,750.00	\$ 6,750.00
236	6-Inch Concrete Sidewalk, Ramp, or Drive	1,100	Sft	\$ 6.75	\$ 7,425.00	\$ 7,425.00
237	8-Inch Concrete Sidewalk, Ramp, or Drive	800	Sft	\$ 7.75	\$ 6,200.00	\$ 6,200.00
249	Hydrant Assembly Abandonment	2	Ea	\$ 2,800.00	\$ 5,600.00	\$ 5,600.00
254	Temporary 4 Inch Water Main Line Stop	1	Ea	\$ 8,200.00	\$ 8,200.00	\$ 8,200.00
255	Temporary 6 Inch Water Main Line Stop	2	Ea	\$ 8,400.00	\$ 16,800.00	\$ 16,800.00
256	12 Inch Insertion Valve in Box	1	Ea	\$ 7,500.00	\$ 7,500.00	\$ 7,500.00
257	Remove Light Std Shaft	2	Ea	\$ 467.00	\$ 934.00	\$ 934.00
259	Light Std Shaft, Install Salv	2	Ea	\$ 571.00	\$ 1,142.00	\$ 1,142.00
271	Sign, Portable Changeable Message, Furnish and Operate	2	Ea	\$ 2,775.00	\$ 5,550.00	\$ 666.00
272	Channelizing Device, 42 Inch - Furnish & Operate	120	Ea	\$ 17.76	\$ 2,131.20	\$ 255.74
273	Barricade Type III - Lighted - Furnish and Operate	20	Ea	\$ 99.90	\$ 1,998.00	\$ 239.76
274	Barricade Type II - Furnish and Operate	30	Ea	\$ 19.98	\$ 599.40	\$ 71.93
275	Temporary Sign - Type B	1,276	Sf	\$ 3.33	\$ 4,249.08	\$ 509.89
276	Temporary Sign - Type A	45	Sf	\$ 3.33	\$ 149.85	\$ 17.98
277	Portable Water Filled Barriers	100	Lf	\$ 28.20	\$ 2,820.00	\$ 338.40
278	Lighted Arrow, Type C, Furnish & Operate	1	Ea	\$ 555.00	\$ 555.00	\$ 66.60
287	Remove Structure	1	Cyd	\$ 170.00	\$ 170.00	\$ 170.00
368	Double Inlet	1	Ea	\$ 1,850.00	\$ 1,850.00	\$ 1,850.00
400	Class 50 DIP w/ Polyethylene Wrap, 4 inch, TD-1 Modified	20	Lf	\$ 1,048.00	\$ 20,960.00	\$ 20,960.00
401	Class 50 DIP w/ Polyethylene Wrap, 6 inch, TD-1 Modified	41	Lf	\$ 515.00	\$ 21,115.00	\$ 21,115.00
402	Class 50 DIP w/ Polyethylene Wrap, 8 inch, TD-1 Modified	0	Lf	\$ 430.00	\$ -	\$ -
403	Class 50 DIP w/ Polyethylene Wrap, 12 inch, TD-1 Modified	680	Lf	\$ 294.50	\$ 200,260.00	\$ 200,260.00
410	Bends & Reducers, 4 inch	4	Ea	\$ 675.00	\$ 2,700.00	\$ 2,700.00
411	Bends & Reducers, 6 inch	4	Ea	\$ 680.00	\$ 2,720.00	\$ 2,720.00
412	Bends & Reducers, 8 inch	3	Ea	\$ 760.00	\$ 2,280.00	\$ 2,280.00
430	Tees & Crosses, 12 inch	11	Ea	\$ 1,550.00	\$ 17,050.00	\$ 17,050.00
440	Fire Hydrant Assembly	2	Ea	\$ 12,300.00	\$ 24,600.00	\$ 24,600.00
441	Gate Valve-in-Box, 4 inch	1	Ea	\$ 1,320.00	\$ 1,320.00	\$ 1,320.00
442	Gate Valve-in-Box, 6 inch	1	Ea	\$ 1,440.00	\$ 1,440.00	\$ 1,440.00
446	Gate/Butterfly Valve-in-Well, 12 inch	1	Ea	\$ 6,000.00	\$ 6,000.00	\$ 6,000.00
453	Tapping Sleeve & Valve-in-Box, 12 inch		Ea	\$ 8,200.00	\$ -	\$ -
460	Excavate & Backfill for Water Service Tap and Lead	238	Lf	\$ 200.00	\$ 47,600.00	\$ 47,600.00
481	Water Main Pipe Abandonment	915	Lf	\$ 2.50	\$ 2,287.50	\$ 2,287.50
482	Gate Valve-in-Box Abandonment	6	Ea	\$ 690.00	\$ 4,140.00	\$ 4,140.00
483	Gate/Butterfly Valve-in-Well Abandonment	2	Ea	\$ 2,115.00	\$ 4,230.00	\$ 4,230.00
5010025	Hand Patching	60	Ton	\$ 195.00	\$ 11,700.00	\$ 11,700.00
500	Remove Bituminous Pavement WM	800	Syd	\$ 15.00	\$ 12,000.00	\$ 12,000.00
501	Remove Concrete Pavement - Any Thickness WM	800	Syd	\$ 12.00	\$ 9,600.00	\$ 9,600.00
527	Aggregate Base Course - 21AA - C.I.P.	180	Cyd	\$ 128.00	\$ 23,040.00	\$ 23,040.00
529	Sand Subbase Course, 2NS - C.I.P.	220	Cyd	\$ 77.00	\$ 16,940.00	\$ 16,940.00
540	Non-Reinforced Concrete, 8" Thickness	750	Syd	\$ 65.50	\$ 49,125.00	\$ 49,125.00
585	Reflectorized-Fast Dry Pavement Marking, 4" Yellow	94	Ft	\$ 1.00	\$ 94.00	\$ 11.28
586	Reflectorized-Fast Dry Pavement Marking, 6" White	306	Ft	\$ 2.00	\$ 612.00	\$ 73.44
587	Reflectorized-Fast Dry Pavement Marking, 24" White	460	Ft	\$ 6.00	\$ 2,760.00	\$ 331.20
588	Reflectorized-Fast Dry Pavement Marking, Symbol White	4	Ea	\$ 150.00	\$ 600.00	\$ 72.00

ITB 4466 South University Streetscape Improvements

Items highlighted in blue are 100% City Funded.

Items highlighted in green are City Funded restoration items not included in Fonson's Water Main Quote

Items in red are shared at a rate of 12 percent based on the total contract portion attributable to the City's water main.

Item No.	Description	Qty.	Unit	Fonson Bid Prices		12%																																																		
				Unit Price	Total	WM Cost																																																		
563	Structure Covers	400	Lbs	\$ 2.20	\$ 880.00	\$ 880.00																																																		
580	Remove Pavement Markings	100	Lf	\$ 2.00	\$ 200.00	\$ 24.00																																																		
581	Remove Pavement Markings-Symbol or Legend	2	Ea	\$ 200.00	\$ 400.00	\$ 48.00																																																		
582	Temporary Pavement Marking (Type R)-In Place	1,000	Lf	\$ 0.35	\$ 350.00	\$ 42.00																																																		
592	Cold Plastic Pvmt Mark, Symbol White	4	Ea	\$ 250.00	\$ 1,000.00	\$ 120.00																																																		
595	Thermo Pavmt Mark, 4" Yellow	94	Lf	\$ 1.50	\$ 141.00	\$ 16.92																																																		
596	Thermo Pavmt Mark, 6" White	306	Lf	\$ 3.00	\$ 918.00	\$ 110.16																																																		
597	Thermo Pavmt Mark, 24" White	460	Lf	\$ 13.00	\$ 5,980.00	\$ 717.60																																																		
702	Inlet Filter	15	Ea	\$ 188.00	\$ 2,820.00	\$ 338.40																																																		
703	Silt Fence	200	Lf	\$ 6.95	\$ 1,390.00	\$ 166.80																																																		
891	Clean-Up and Restoration	1	LS	\$ 9,200.00	\$ 9,200.00	\$ 1,104.00																																																		
10200	Bends & Reducers, 12 inch	18	Ea	\$ 1,100.00	\$ 19,800.00	\$ 19,800.00																																																		
10210	12 inch Gate Valve in Box	7	Ea	\$ 3,100.00	\$ 21,700.00	\$ 21,700.00																																																		
10220	Temporary 12 Inch Water Main Line Stop	3	Ea	\$ 13,000.00	\$ 39,000.00	\$ 39,000.00																																																		
10230	Exploratory Excavation - 4" & 6" Leads	3	Ea	\$ 1,900.00	\$ 5,700.00	\$ 5,700.00																																																		
10240	8 inch Water Main Connection - University Tower	1	Ea	\$ 10,500.00	\$ 10,500.00	\$ 10,500.00																																																		
10400	Mobilization - Additional Work	1	LS	\$ 44,500.00	\$ 44,500.00	\$ 44,500.00																																																		
	12" Water Main Abandonment w/ Grout	640	LS	\$ 13.00	\$ 8,320.00	\$ 8,320.00																																																		
TOTAL CONSTRUCTION						\$ 803,723.20																																																		
Direct Water Main Items						\$ 546,322.50																																																		
Direct Restoration Items Attributed to WM						\$ 188,362.60																																																		
Shared Items percentage attributed to WM						\$ 69,038.10																																																		
Total Water Main Construction Cost						\$ 803,723.20																																																		
<table border="0" style="width: 100%; border-collapse: collapse;"> <thead> <tr> <th></th> <th></th> <th>Estimated</th> <th>12% City</th> <th></th> </tr> <tr> <th></th> <th></th> <th>Total</th> <th>Share</th> <th>DDA Share</th> </tr> </thead> <tbody> <tr> <td>Construction Inspection</td> <td>1</td> <td>\$95,000</td> <td>\$11,400</td> <td>\$83,600</td> </tr> <tr> <td>Construction Survey</td> <td>1</td> <td>\$40,000</td> <td>\$4,800</td> <td>\$35,200</td> </tr> <tr> <td>Construction Testing</td> <td>1</td> <td>\$15,000</td> <td>\$1,800</td> <td>\$13,200</td> </tr> <tr> <td></td> <td></td> <td></td> <td>\$18,000</td> <td>\$132,000</td> </tr> <tr> <td>Added Construction Inspection and Survey for 12" Water Main</td> <td>1</td> <td>\$20,000</td> <td>\$20,000</td> <td>\$0</td> </tr> <tr> <td colspan="4">Total City Water Main Construction Costs with Inspection, Survey & Testing</td> <td>\$ 841,723.20</td> </tr> <tr> <td colspan="4">Previous Cost Sharing Estimate</td> <td>\$ 310,687.36</td> </tr> <tr> <td colspan="4">Additional Funding Request</td> <td>\$ 531,035.84</td> </tr> </tbody> </table>									Estimated	12% City				Total	Share	DDA Share	Construction Inspection	1	\$95,000	\$11,400	\$83,600	Construction Survey	1	\$40,000	\$4,800	\$35,200	Construction Testing	1	\$15,000	\$1,800	\$13,200				\$18,000	\$132,000	Added Construction Inspection and Survey for 12" Water Main	1	\$20,000	\$20,000	\$0	Total City Water Main Construction Costs with Inspection, Survey & Testing				\$ 841,723.20	Previous Cost Sharing Estimate				\$ 310,687.36	Additional Funding Request				\$ 531,035.84
		Estimated	12% City																																																					
		Total	Share	DDA Share																																																				
Construction Inspection	1	\$95,000	\$11,400	\$83,600																																																				
Construction Survey	1	\$40,000	\$4,800	\$35,200																																																				
Construction Testing	1	\$15,000	\$1,800	\$13,200																																																				
			\$18,000	\$132,000																																																				
Added Construction Inspection and Survey for 12" Water Main	1	\$20,000	\$20,000	\$0																																																				
Total City Water Main Construction Costs with Inspection, Survey & Testing				\$ 841,723.20																																																				
Previous Cost Sharing Estimate				\$ 310,687.36																																																				
Additional Funding Request				\$ 531,035.84																																																				