

TOTAL
 L=220.32
 R=530.00
 $\Delta=23^{\circ}49'05''$
 C LEN=218.74
 BRN=N111° 59' 55"E

N89° 54' 35"W
 258.54'

500' 05' 25"W

PRIVATE EASEMENT FOR PUBLIC UTILITIES

Lot 13
 PLYMOUTH PROFESSIONAL PARK

PRIVATE EASEMENT FOR PUBLIC UTILITIES

EXISTING 7.00' WD SIDEWALK EASEMENT
 L: 3120 P. 940

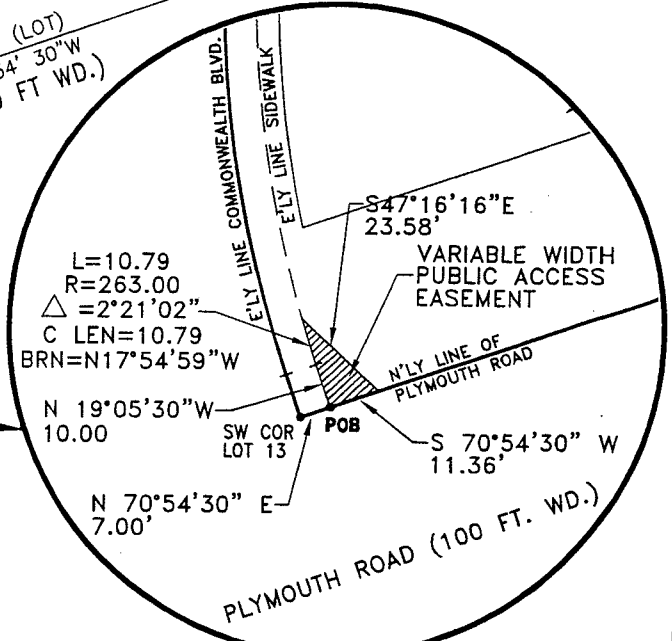
L=202.63
 R=270.90
 $\Delta=43^{\circ}00'00''$
 C LEN=197.91
 BRN=N2°24'30"E

COMMONWEALTH BLVD. (60 FT. WD.)

SEE DETAIL

PLYMOUTH ROAD (100 FT WD.)

1"=80'

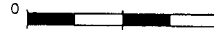


DETAIL

1"=40'

PROJECT MANAGEMENT - PUBLIC SERVICES AREA
 CITY OF ANN ARBOR

VARIABLE WIDTH PUBLIC ACCESS EASEMENT
 2000 COMMONWEALTH BLVD.
 09-09-14-305-005

DR. BY	DPF	CH. BY	GFD	DRAWING NO. 2009029
SCALE	SEE ABOVE	DATE	10-19-09	
INCH 				SHEET NO. <u>1</u> OF <u>2</u>